



**J.J.METCALFE & SON LTD**

T 01609 771124

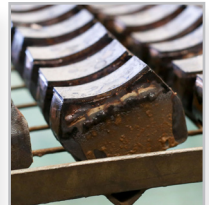
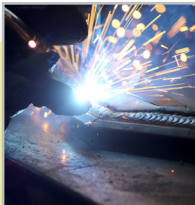
E [info@jjmetcalfeandson.com](mailto:info@jjmetcalfeandson.com)

[www.jjmetcalfeandson.com](http://www.jjmetcalfeandson.com)

## **DIRECT DRILL COULTERS**



**SPECIALISTS IN PERFORMANCE PARTS FOR AGRICULTURE**





## INDEX

> ABOUT DIRECT DRILL COULTERS	3 - 4
> ALL DIRECT DRILL OPTIONS	5 - 8
> TO FIT HORSCH	9 - 12
> TO FIT AMAZONE CAYENA	13 - 16
> TO FIT OTHER DRILL MAKES	17 - 18
> TO FIT SIMBA FREEFLOW	19
> DIRECT DRILL SELF BUILD	20 - 21
> PREPARING FOR DIRECT DRILLING With the NG System	22



KEEP UP WITH US ON TWITTER @JJMANDSON



## ABOUT J.J.METCALFE & SON LTD

With a wealth of 'in field' knowledge dating back to 1947, family run company J.J.Metcalfe & Son Ltd believe in achieving the best possible crop yield from the most economically viable solutions.

Specialising in the application of tungsten carbide, J.J.Metcalfe & Son Ltd focus on manufacturing wearing parts for agriculture that provide a consistently high performance throughout a long life using high grade steels, heat treatment methods and hard facing alongside tungsten carbide.

J.J.Metcalfe & Son's extensive knowledge on the manufacture of castings and the application of tungsten carbide, means that they now supply some of the industry's largest brand names.



### > PLEASE NOTE

*Throughout this brochure manufacturers names are used for reference only, all parts are designed and manufactured by J.J.Metcalfe & Son Ltd.*



## THE BENEFITS OF MOVING LESS SOIL

RUNS VERTICAL  
WHEN IN THE  
GROUND

THE FRONT TUNGSTEN  
CARBIDE TIP OPTIMISES  
THE ULTIMATE TINE ANGLE,  
WHICH IS CRUCIAL FOR THE  
BEST BALANCE BETWEEN  
THROW AND SMEARING

ORGANIC MATTER  
REMAINS ON THE  
SURFACE



WORM POPULATION  
LEFT UNDISTURBED  
TO AERATE SOIL

SEEDS PLACED UNDER  
ORGANIC MATTER



Image courtesy of Tom Greenhalgh, Mill Hill Farms, Retford

J.J.Metcalf & Son Ltd provide one of the lowest disturbance drill coulters on the market, moving only 12mm of soil in every row width, but what are the benefits of this?

- Using a narrow tine greatly improves seed placement and seed to soil contact. Moving less soil means there is less soil to replace, which makes filling the slot easier. Minimal disturbance also leaves a level seed bed which further promotes soil contact over the seeds, and in turn helps to prevent slug damage.
- Moving less soil means that very few weed seeds are disturbed, reducing the germination of bothersome varieties such as black grass and brome.
- The angle of the tip is crucial as it gives the least amount of throw and keeps smearing to a minimum, retaining moisture in the process.
- Low disturbance drilling goes hand in hand with conservation agriculture, which helps fix and increase carbon or organic matter in the soil and supports the worm population.
- Aside from the agronomic benefits, there are a wide range of advantages to the farmer. If you move less soil, you also use less labour, wearing parts and fuel.



## ALL DIRECT DRILL OPTIONS



JJMDDHSPCO



JJMDDHAMCAY



JJMDDHAMCON



JJMDDHULTI



JJMDDHSHF/SHS



JJMDDHJOCK



JJMDDHVIRK



JJMDDHVERS

PART ID	PRICE
JJMDDHSPCO	£32.00
JJMDDHAMCAY	£38.30
JJMDDHAMCON	£40.68
JJMDDHULTI	£38.34
JJMDDHSHF / JJMDDHSHS	£32.00
JJMDDHJOCK (requires SPCO coulter pages 9-12)	£99.34
JJMDDHVIRK	£32.00
JJMDDHVERS	£40.68



JJMDDP001



JJMDDP002



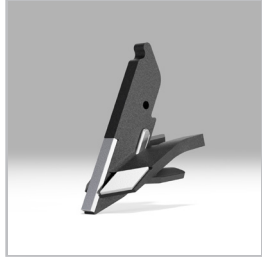
JJMDDP003



JJMDDP004



JJMDDP005



JJMDDP008

## EASILY SWITCH BETWEEN TIPS JUST BY CHANGING A SINGLE ROLL PIN!

Tips are available in three different lengths: 175mm, 200mm and 225mm.  
200mm and 225mm now come with two tungsten tiles on the leading edge.  
Winged points are available in 50mm and 100mm width, on any length point.

PART ID	PRICE
JJMDDP001 12mm tungsten carbide tip (175mm)	£44.02
JJMDDP002 12mm tungsten carbide tip (200mm)	£55.13
JJMDDP003 12mm tungsten carbide tip (225mm)	£56.10
JJMDDP004 100mm tungsten carbide tip (175mm)	£76.53
JJMDDP005 100mm tungsten carbide tip (200mm)	£80.57
JJMDDP006 100mm tungsten carbide tip (225mm)	£81.32
JJMDDP008 50mm tungsten carbide tip (175mm)	£63.01



## ALL DIRECT DRILL OPTIONS



JJMDDT001



JJMDDT002



JJMDDT003



JJMDDT004



JJMDDT009



JJMDDT0011



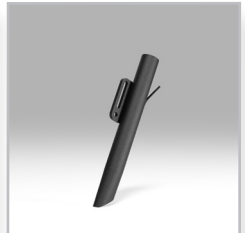
JJMDDT005



JJMDDT006



JJMDDT007



JJMDDT008



JJMDDT010



.....

## MULTIPLE TUBE OPTIONS!

We have a variety of tubes available including granular and liquid fertiliser.

The liquid fertiliser tube can be internal, external or both depending on which tip you are using.

.....

PART ID	PRICE
JJMDDT001 Standard tube, Bracket: 125mm	£9.54
JJMDDT002 Granular fert, Bracket: 125mm	£22.50
JJMDDT003 Int. Liquid fert, Bracket: 125mm	£18.08
JJMDDT004 Ext. Liquid fert, Bracket: 125mm	£18.08
JJMDDT005 Standard tube, Bracket: 154mm	£9.54
JJMDDT006 Granular fert, Bracket: 154mm	£22.50
JJMDDT007 Int. Liquid fert, Bracket: 154mm	£18.08
JJMDDT008 Ext. Liquid fert, Bracket: 154mm	£18.08
JJMDDT009 Int. & Ext. Liquid fert, Bracket: 125mm	£25.43
JJMDDT010 Int. & Ext. Liquid fert, Bracket: 154mm	£25.43
JJMDDT011 Curved Standard Tube, Bracket: 125mm	£10.00



## TO FIT HORSCH CO AND SPRINTER

CODE PREFIX: JJMDDCOMP-



SPCO-12S-T001



SPCO-12S-T002



SPCO-12S-T003



SPCO-12S-T009



SPCO-12M-T001



SPCO-12M-T002



SPCO-12M-T003



SPCO-12M-T009



SPCO-12L-T005



SPCO-12L-T006



SPCO-12L-T007



SPCO-12L-T010

*Drilled with 12mm horsch conversion coulters by Richard Raper, Thirsk.*



PART ID	PRICE
JJMDDCOMP-SPCO-12S-T001	£85.56
JJMDDCOMP-SPCO-12S-T002	£98.52
JJMDDCOMP-SPCO-12S-T003	£94.10
JJMDDCOMP-SPCO-12S-T009	£101.45
JJMDDCOMP-SPCO-12M-T001	£96.67
JJMDDCOMP-SPCO-12M-T002	£109.63
JJMDDCOMP-SPCO-12M-T003	£105.21
JJMDDCOMP-SPCO-12M-T009	£112.56
JJMDDCOMP-SPCO-12L-T005	£97.64
JJMDDCOMP-SPCO-12L-T006	£110.60
JJMDDCOMP-SPCO-12L-T007	£106.18
JJMDDCOMP-SPCO-12L-T010	£113.53



## TO FIT HORSCH CO AND SPRINTER

CODE PREFIX: JJMDDCOMP-



SPCO-100S-T001



SPCO-100S-T002



SPCO-100S-T004



SPCO-100S-T009



SPCO-100M-T001



SPCO-100M-T002



SPCO-100M-T004



SPCO-100M-T009



SPCO-100L-T005



SPCO-100L-T006



SPCO-100L-T008



SPCO-100L-T010

*Drilled with 100mm horsch conversion coulters, image courtesy of Aaron Hogsbjerg.*



PART ID	PRICE
JJMDDCOMP-SPCO-100S-T001	£118.07
JJMDDCOMP-SPCO-100S-T002	£131.03
JJMDDCOMP-SPCO-100S-T004	£126.61
JJMDDCOMP-SPCO-100S-T009	£130.65
JJMDDCOMP-SPCO-100M-T001	£122.11
JJMDDCOMP-SPCO-100M-T002	£135.07
JJMDDCOMP-SPCO-100M-T004	£130.65
JJMDDCOMP-SPCO-100M-T009	£138.00
JJMDDCOMP-SPCO-100L-T005	£122.86
JJMDDCOMP-SPCO-100L-T006	£135.82
JJMDDCOMP-SPCO-100L-T008	£131.40
JJMDDCOMP-SPCO-100L-T010	£138.75



## TO FIT AMAZONE CAYENA OR BRACKET

CODE PREFIX: JJMDDCOMP-



AMCAY-12S-T001



AMCAY-12S-T002



AMCAY-12S-T003



AMCAY-12S-T009



AMCAY-12M-T001



AMCAY-12M-T002



AMCAY-12M-T003



AMCAY-12M-T009



AMCAY-12L-T005



AMCAY-12L-T006



AMCAY-12L-T007



AMCAY-12L-T010

*Drilled into stubble with 12mm horsch conversion coulters by Richard Raper, Thirsk.*



PART ID	PRICE
JJMDDCOMP-AMCAY-12S-T001	£91.86
JJMDDCOMP-AMCAY-12S-T002	£104.82
JJMDDCOMP-AMCAY-12S-T003	£100.40
JJMDDCOMP-AMCAY-12S-T009	£107.75
JJMDDCOMP-AMCAY-12M-T001	£102.97
JJMDDCOMP-AMCAY-12M-T002	£115.93
JJMDDCOMP-AMCAY-12M-T003	£111.51
JJMDDCOMP-AMCAY-12M-T009	£118.86
JJMDDCOMP-AMCAY-12L-T005	£103.94
JJMDDCOMP-AMCAY-12L-T006	£116.90
JJMDDCOMP-AMCAY-12L-T007	£112.48
JJMDDCOMP-AMCAY-12L-T010	£119.83



## TO FIT AMAZONE CAYENA OR BRACKET

CODE PREFIX: JJMDDCOMP-



AMCAY-100S-T001



AMCAY-100S-T002



AMCAY-100S-T004



AMCAY-100S-T009



AMCAY-100M-T001



AMCAY-100M-T002



AMCAY-100M-T004



AMCAY-100M-T009



AMCAY-100L-T005



AMCAY-100L-T006



AMCAY-100L-T008



AMCAY-100L-T010



*Stubble after using 100mm coulters, image courtesy of Tom Reynolds, Salbstein Farms.*



PART ID	PRICE
JJMDDCOMP-AMCAY-100S-T001	£124.37
JJMDDCOMP-AMCAY-100S-T002	£137.33
JJMDDCOMP-AMCAY-100S-T004	£132.91
JJMDDCOMP-AMCAY-100S-T009	£136.95
JJMDDCOMP-AMCAY-100M-T001	£128.41
JJMDDCOMP-AMCAY-100M-T002	£141.37
JJMDDCOMP-AMCAY-100M-T004	£136.95
JJMDDCOMP-AMCAY-100M-T009	£144.30
JJMDDCOMP-AMCAY-100L-T005	£129.16
JJMDDCOMP-AMCAY-100L-T006	£142.12
JJMDDCOMP-AMCAY-100L-T008	£137.70
JJMDDCOMP-AMCAY-100L-T010	£145.05



## TO FIT OTHER DRILL MAKES

CODE PREFIX: JJMDDCOMP-



AMCON-12S-T001



AMCON-12S-T0012



AMCON-100S-T0011



AMCON-50S-T0011



JOCK-12S-T0011



JOCK-100S-T001



VERSA-12S-T001



VERSA-100S-T001



SHF-12S-T001



SHS-100S-T001



ULTI-12S-T001



VIRK-12S-T001

*Wheat sown after peas using 50mm winged coulter, picutre courtesy of Roman Magg, Latvia*



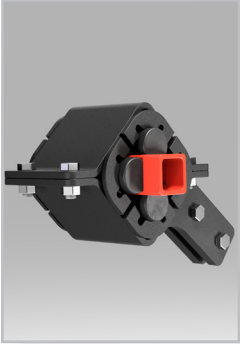
KEEP UP WITH US ON TWITTER @JJMANDSON

PART ID	PRICE
JJMDDCOMP-AMCON-12S-T001	£95.87
JJMDDCOMP-AMCON-12S-T0012	£108.83
JJMDDCOMP-AMCON-100S-T0011	£128.38
JJMDDCOMP-AMCON-50S-T001	£114.86
JJMDDCOMP-JOCK-12S-T0011	£185.36
JJMDDCOMP-JOCK-100S-T0011	£218.33
JJMDDCOMP-VERSA-12S-T001	£95.41
JJMDDCOMP-VERSA-100S-T001	£126.75
JJMDDCOMP-SHF-12S-T001	£129.16
JJMDDCOMP-SHS-12S-T004	£142.12
JJMDDCOMP-ULTI-12S-T001	£91.90
JJMDDCOMP-VIRK-12S-T001	£85.56

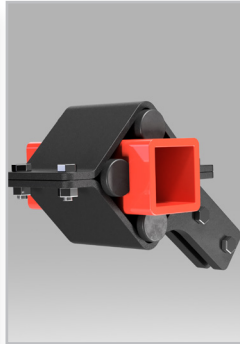


## DIRECT DRILL SELF BUILD

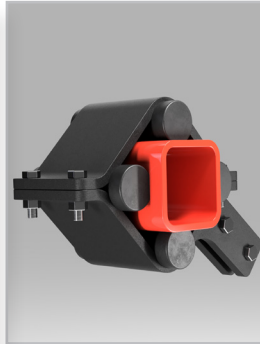
With many people self building drills or repurposing an old drill, we offer a range of different parts to help you achieve this goal. We can fit our coulters onto varying size of box section, in either a square or diamond configuration.



JJMDDTOPB050



JJMDDTOPB002



JJMDDTOPB100



JJMDDTOPB050D with  
AMCAY-100S-T004



JJMAD-100-360



JJMFD-100-360

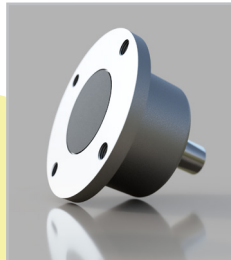


JJMAD-100-360/5



JJMFD-80-360

We also offer spare parts for the disc system



Horsch Drill Conversion, picture courtesy of Kiwi Agronomy



PART ID	PRICE
JJMDDTOPB050	£95.87
JJMDDTOPB002	£87.06
JJMDDTOPB100	£100.13
JJMDDTOPB050D	£99.55
JJMAD-100-360	£299.00
JJMFD-100-360	£274.76
JJMAD-100-360/5	£290.78
JJMFD-80-360	£205.11
JJMFD-BEARINGHUB	£54.00
JJMDDBSAU001 (price each - 40mm x 152mm)	£6.32
JJMDDBSAU002 (price each - 50mm x 152mm)	£9.88
JJMFD-360SCALDISC	£33.36



## TO CONVERT SIMBA



HF  
TC

### FULL FREEFLOW CONVERSION COULTER

*The 'Metflow' coulters allows Simba Freeflow and Mini-flow machines to direct drill by fitting to the bottom of the spring tine.*

*The cost for a complete unit is £82.64.*



KEEP UP WITH US ON TWITTER @JJMANDSON



*Spring beans drilled with horsch conversion coulters by Richard Raper, Thirsk.*

## PREPARING FOR DIRECT DRILLING

### THE NG CULTIVATION SYSTEM

It is easy to understand why many farmers and growers are choosing to switch to direct drilling. However, the transition can be daunting and not always easy, yield can suffer in the first few years if the land is not ready.

Eventually, crop rotation and a healthy worm population will take the place of tillage, but initially the NG System from J.J.Metcalf & Son Ltd can improve soil structure to prepare for direct drilling.

In order for direct drilling to be a success the soil must be free of compaction, have a healthy worm population and plenty of organic matter.

Direct drilling requires the seed to be placed directly beneath the residues of the previous crop with minimal soil disruption. Worms help aerate the soil and reduce compaction therefore must not be disturbed.

The low disturbance nature of the NG System is the perfect transitional subsoiler point. The NG System has the ability to relieve compaction without mixing soil zones, it creates fissures through the soil allowing air flow, water

and nutrients to penetrate. The narrow shin retains the summer tilth providing good seed to soil contact which is essential for germination, and keeps the disruption of worms as low as possible.

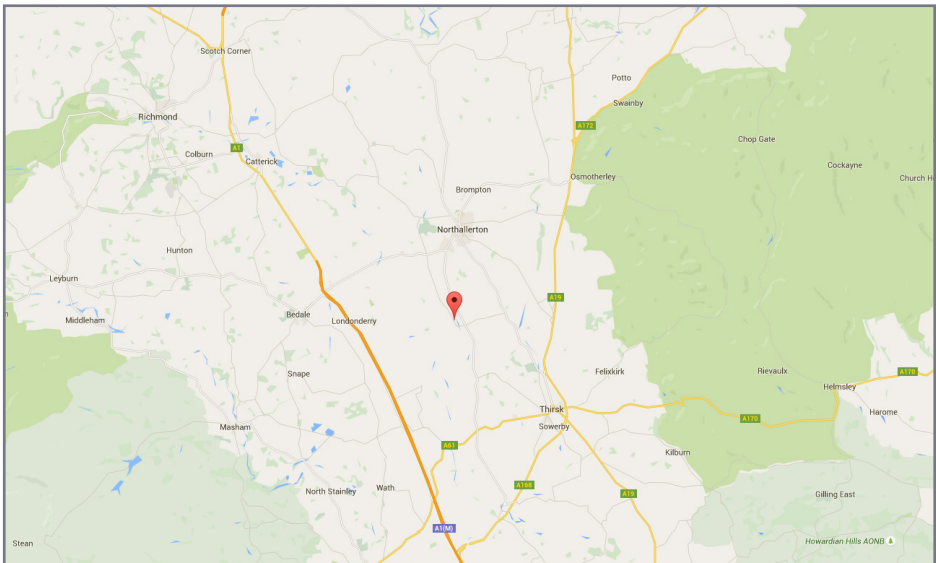




## J.J.METCALFE & SON LTD

T 01609 771124 | E [info@jjmetcalfeandson.com](mailto:info@jjmetcalfeandson.com)

### WHERE TO FIND US



**NEXT DAY SERVICE ON ALL IN STOCK PARTS**  
**[WWW.JJMETCALFEANDSON.COM](http://WWW.JJMETCALFEANDSON.COM)**

J.J. Metcalfe & Son Ltd  
Willow Garth Farm, Newby Wiske,  
Northallerton, North Yorkshire, DL7 9ET