



## Getting the Soil Right for the Crop Using JJMCS150

The CS150 range of parts has proved to be incredibly popular because of its sleek design, cutting through and lifting the soil from 120mm (4") to a maximum depth of 200mm (8"). The system is available with a 100mm, 150mm or 200mm wing and if soil is abrasive or stoney, a leg with a wider 'stonepoint' is available.

This legally protected low draught, low disturbance system takes out compaction caused by baling operations and manure spreading, while using the least amount of fuel.

100mm top bracket clamps onto existing frames or a weld on bracket is available. The leg can be fitted directly onto Cultivating Solutions, Grange Machinery, Ryetec or Weaving machines.



Image kindly provided by Matt Nichols

*These products are protected by Registered Community  
Design Application Number 003522788*

T| 01609 771124  
E| [info@jjmetcalfeandson.com](mailto:info@jjmetcalfeandson.com)  
[www.jjmetcalfeandson.com](http://www.jjmetcalfeandson.com)

J.J.Metcalf & Son Ltd  
Willow Garth Farm, Newby Wiske,  
Northallerton, North Yorkshire, DL7 9ET



# JJMCS150 - Parts List



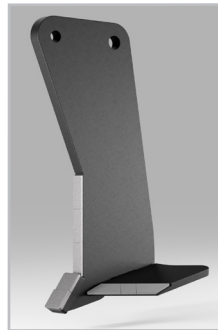
**100mm Box  
Section Bracket**  
Product ID:  
JJMCSBR/100  
£84.95



**100mm Weld On  
Bracket**  
Product ID:  
JJMLWO100  
£15.00



**Complete Leg,  
150mm wing  
with tungsten  
point**  
Product ID:  
JJMCS150  
£150.00



**Complete Leg,  
150mm wing  
with tungsten  
Stone point**  
Product ID:  
JJMCS150S  
£160.00



**Complete Leg,  
200mm wing  
with tungsten  
point**  
Product ID:  
JJMCS200  
£170.00



**Complete Leg,  
200mm wing  
with tungsten  
Stone point**  
Product ID:  
JMCS200S  
£180.00

*These products are protected by Registered Community  
Design Application Number 003522788*

T| 01609 771124  
E| [info@jjmetcalfeandson.com](mailto:info@jjmetcalfeandson.com)  
[www.jjmetcalfeandson.com](http://www.jjmetcalfeandson.com)

J.J.Metcalf & Son Ltd  
Willow Garth Farm, Newby Wiske,  
Northallerton, North Yorkshire, DL7 9ET