



CVH

**OMFB**®

*The home of Commercial Vehicle Hydraulics*

An OMFB Group Company

SOLUTIONS

3 BOLT  
PUMP



GEAR  
PUMP



PISTON  
PUMP



VARIABLE  
PUMP



MOTOR



TANDEM  
PUMP



QUILL  
SHAFTS



INDEPENDENT  
PTO



TWIN WHEEL  
PTO



GEARED  
PTO



DUAL OUTPUT  
PTO



ELECTRO  
PTO



TIPPER  
VALVES



DUAL  
VALVES



PDV  
VALVES



POWER  
PACKS



CABLE  
CONTROL



CAB  
CONTROLS



WET  
KITS



SIDE  
TANKS



REAR OF  
CAB TANK



Across the world, OMFB have an unrivalled reputation for quality, consistency, reliability and complete in-service dependability...

With a range that covers the entire spectrum of mobile hydraulics applications, OMFB manufacture and supply everything from components through to electro hydraulic power units, PTOs and pumps.



**Solutions. Hydraulic Power.**





3 BOLT PUMP



GEAR PUMP



PISTON PUMP



VARIABLE PUMP



MOTOR



TANDEM PUMP



QUILL SHAFTS



INDEPENDENT PTO



TWIN WHEEL PTO



GEARED PTO



DUAL OUTPUT PTO



ELECTRO PTO



TIPPER VALVES



DUAL VALVES



PDV VALVES



POWER PACKS



CABLE CONTROL



CAB CONTROLS



WET KITS



SIDE TANKS



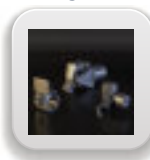
REAR OF CAB TANK



TIPPER KITS



3-WAY SET



TAIL LIFTS



## CVH-OMFB

The UK's number one hydraulic equipment supplier for road transport and the home of Commercial Vehicle Hydraulics.

Tippers • Tankers • Snow ploughs • Salt spreaders • Cranes • Gully emptier's • Bulklers - even for truck-mounted shredding machines.

These are your livelihood. To get the best out of them, you need truck, body and equipment to work together, in harmony, at the touch of a button.

And that's what we're all about.

Because CVH-OMFB are the UK's leading supplier of hydraulic solutions to the road transport industry.

We supply the best...

- Hydraulic equipment from Europe's leading manufacturer, OMFB
- Tail-lifts from Italy's most innovative manufacturer, Anteo

And with over 30 years UK experience, we've a track record that's second to none...

**Solutions. That's what CVH-OMFB deliver.**



1991 - 2021



## OMFB GROUP

OMFB started in 1950 by three Bianchi brothers Umberto, Nicola and Alessandro, now some 70 Years later OMFB Group strengthens its direct World presence with group companies within Italy, France, Spain, Australia, China, India, and now the United Kingdom.

OMFB Group company manufacture and distribute several categories of products such as Wetkits, Power Take Off's (Pto), Pumps, Hydraulic Motors, Variable Displacement Piston Pumps, Monobloc Valves, VBR Directional Control Valves, Proportional Delivery Pressure-limiting Valve (PDV), Controls, Hydraulic Tanks OMFB & Dalbarco, Fuel Tanks, Powerpacks.

With 100% ownership of CVH-OMFB we bring to the market OMFB's capability, expertise and confidence.

70 Years European manufacturing experience, proven time and again...

**Solutions. Built by OMFB Group.**



1950 - 2022

**OMFB**  
HYDRAULIC COMPONENTS



## Wet Kits - Tip, Walk or Swing

Power when you need it...

Versatility is the ultimate solution for the modern tractor unit - CVH specialise in all variants of hydraulic wet kits from standard tipper - tipper / walking floor - triple operation - all solutions under one roof...

With our tank manufacturing solutions, off the shelf standard tanks to bespoke tanks for restricted space.

**And that's why CVH is the fleet operator choice.**



WET KITS



STEEL TANKS 70 L - 250 L



Today we are able to offer you one of the most comprehensive ranges of tanks available to the market, including fuel, hydraulic and combined tanks; built in three different materials: coated steel, stainless steel and aluminium.

Used by our customers in many different industrial sectors: available as supply only or complete equipment builds - industrial vehicles, hydraulic cranes, hydraulic kits, heavy duty machines, forklift, agricultural machinery and more.

ROC TANKS



SCANIA SIDE MOUNT



We have the capacity to manufacture over 800 tanks per week within our OMFB Group factories, In addition to our UK bespoke tank manufacturing - we truly can deliver any solution.

**Solutions. Fuel or Hydraulic.**

DAF FTG DRAG LINK



COMBI TANK



ALLOY TANKS 70 L - 200 L



SLIMLINE ROC



ADDITIONAL ADBLUE



# Hydraulic Power Take Off PTO

Power take-offs (PTOs) are mechanical devices that are connected to the gear systems of industrial vehicles. They pick up the driving power and make it available to other mechanical devices, e.g. hydraulic gear pumps or piston pumps. We have a wide range of PTOs with different coupling systems, suitable for most existing vehicles: mechanical, pneumatic, vacuum-controlled and clutch coupling.

INDEPENDENT PTO



TWIN WHEEL PTO



GEARED PTO



HOT SHIFT PTO



DUAL OUTPUT PTO



MAG-TRONIC PTO



VACUUM PTO



PROP SHAFT DRIVE PTO





# Hydraulic Pumps & Motors

GEAR PUMP



Our gear pumps include versions for medium, high and very high pressure (up to 320 bar), in various configurations (DIN, UNI, ISO, SAE) and displacement sizes (from 6 to 150 cc). Tandem installations are also possible.



PISTON PUMP



Fixed-displacement axial piston pumps, load sensing pumps and slanted axis pumps, in various configurations (UNI, ISO, SAE), for displacement sizes from 21 to 130 cc and pressures up to 400 bars.



VARIABLE PISTON PUMP



Variable displacement pump is able to deliver from maximum to zero flow rate. The displacement depends on the stroke of the pistons, which is determined by the inclination of the swash plate. Maximum displacement position is reduced as two pistons hydraulically operate. Cylinders block rotates with the shaft forcing the pistons to rotate and activate the swash plate. All controlled by a pump mounted regulator.



MOTOR



The birotational bent axis piston motors series HPM are suitable for any kind of hydraulic applications, which require high performances. These motors ensure low level noise in combination with compact size and robust design and are produced using the latest technology.



3 BOLT PUMP



GEAR PUMP



PISTON PUMP



VARIABLE PUMP



MOTOR



TANDEM PUMP



QUILL SHAFTS



INDEPENDENT PTO



TWIN WHEEL PTO



GEARED PTO



DUAL OUTPUT PTO



ELECTRO PTO



TIPPER VALVES



DUAL VALVES



PDV VALVES



POWER PACKS



CABLE CONTROL



CAB CONTROLS



WET KITS



SIDE TANKS



REAR OF CAB TANK



Across the world, OMFB have an unrivalled reputation for quality, consistency, reliability and complete in-service dependability...

With a range that covers the entire spectrum of mobile hydraulics applications, OMFB manufacture and supply everything from components through to electro hydraulic power units, PTOs and pumps.



**Solutions. Hydraulic Power.**



HYDROTIP -  
MOTOR-PUMP



GROUP 2 & 3  
MOTORS



ELEVATING  
ROOF KIT



SDC  
EX-CHANGER



HEAT  
EX-CHANGER



FLOW  
DISTRIBUTOR



FLOW  
DISTRIBUTOR



END OF  
STROKE



FM40  
SERIES



FE40  
SERIES



MONOBLOC  
SERIES



MODULE  
GATE



SECTIONAL  
VALVES



DUAL  
PRESSURE



3-WAY  
DIVERTER



6-WAY  
DIVERTER



AIR  
DIVERTER



LIMIT  
VALVES



PO CHECK  
VALVE



CHECK  
VALVE



PRESSURE  
RELIEF



PDV74



PDV 114



PDV315



MODULAR

**OMFB**

HYDRAULIC POWER CONTROL

## PDV Valve Range

Proportional Directional Control Valves  
 Direct acting: 160l/min / 260l/min / 600l/min  
 Port Flow: 140l/min / 205l/min / 500l/min  
 Pressure: 400 bar / 5,800 psi

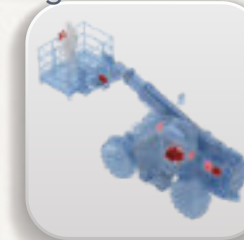
PDV range consisting of 74 / 114 / 315 is a hydraulic proportional directional valve, designed to offer a wide range controls options and flexibility.

The PDV range modular system enables bankable groups to perform many individual tasks, to meeting and exceeding the changing control needs of the off-highway machines of today, and well into the future to maximise the efficiency, controllability and reliability of vehicles.

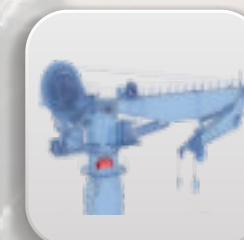
### PDV main features:

- Load sensing up-stream pressure compensation
- High flow/low pressure drop capability in a compact size
- Integrated pump unloading system
- Integrated cut-off pump system
- Open/closed centre shifting system
- Precise metering capabilities
- LSA-LSB electrical unloading
- LSA-LSB electrical working pressure remote control
- Constant flow regardless of pressure
- Working sections symmetrical flow
- Optional priority inlet for steering or different priority functions
- Optional dual hydraulic pilot and electro-hydraulic control
- ATEX and IECEx configuration
- CAN-Bus communication
- EMC immunity ensures high safety with regard to electro-magnetic compatibility

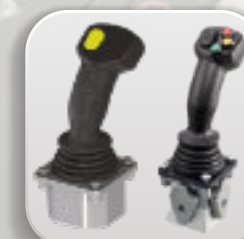
Eg. TELEHANDLER



Eg. DRILLING



Eg. DOCK CRANE



Eg. CONTROLS

DIRECTIONAL CONTROL

HYDRAULIC INTEGRATED



### MDV-3 / MDV-5 CETOP VALVE RANGE

Maximum operating voltage fluid port P, A, B 31.5 MPa  
Hydraulic fluid port 21 MPa (DC); 16 MPa (AC)  
Maximum flow rate 80l/min & 120 l/min



PRE-COMPENSATED

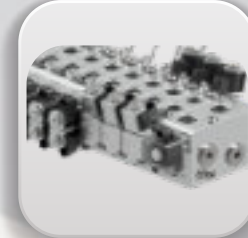


### VP20 - PRE-COMPENSATED PROPORTIONAL SECTIONAL VALVE

MAIN FEATURES:

Load sensing Pressure Pre- Compensated  
Open / Closed centre configuration user switchable  
Electro-hydraulic controls with or without manual lever  
Flow rating: up to 220/min - Supply pressure: max 400bar  
LsA / LsB relief valves - Auxiliary valves on A and B ports  
Spool position sensor - Special spool for pressure control  
Available with or without local pressure compensator's

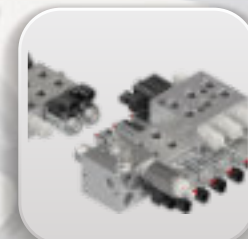
PRE-COMPENSATED



### VB12/VD12 - DIRECTIONAL CONTROL VALVE

MAIN FEATURES:

Direct acting with pull-type ON/OFF solenoid  
Compact design  
Product with wide customisation options  
Designed with parallel connection  
Push pin manual override  
Wide range of spool type  
Wide range of auxiliary function for each working section  
Special ports dimension available on request



DIRECTIONAL CONTROL

MODULAR



### VL14/VP14/VPc14 - ELECTRO-HYDRAULIC PROPORTIONAL CONTROL VALVE

MAIN FEATURES:

Load sensing with Pre- Compensation  
Electro-hydraulics control with or without manual lever  
Flow rating: up to 80/min - Supply pressure: max 350bar  
Spool position sensor - Special spool for pressure control  
Compact design, wide customisation options



BESPOKE BUILD

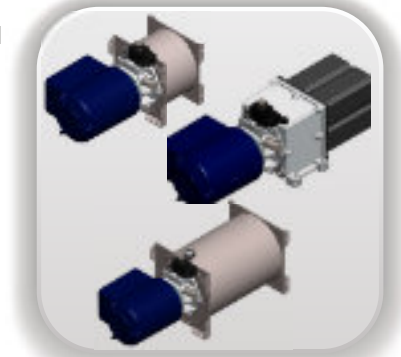
ELECTRO-HYDRAULIC  
PROPORTIONAL





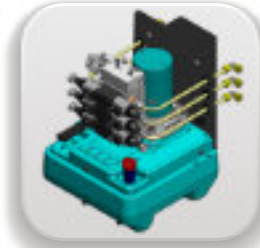
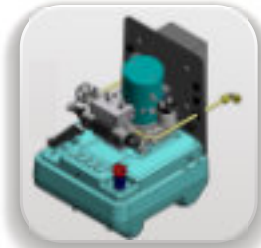
### POWER PACKS

DC (Hydraulic) power packs with inlet and outlet ports for general use. It can be used with configuration P-S or with panels or connected control valves



### KUBE POWER PACKS

KUBE power packs have been created to offer to industrial vehicles assembling companies a pre-assembled product which can satisfy the always increasing needs in practicality and quick assembly, without sacrificing quality, reliability and compactness.



### HAND PUMPS

Hand pumps with double effect activation (the pump delivers oil both pushing and pulling the lever), with check valve on pressure port and whether with drainage tap for simple effect installations or without tap for emergency installations. Available in three different capacities to allow several applications and to limit the effort on the lever in any situation. The body is in cast-iron with white galvanisation and the stem is in nickered steel.



## Mobile Hydraulic Power

We offer a complete range of hydraulics components, from mini power packs, electro-hydraulic power units to hand pumps piston type, to truck pto pumps and spare parts to hydraulic gear pumps.

**Solutions. From CVH-OMFB.**





## Electromagnetic Clutch PTO

This solution enables hydraulic system operation when the base chassis has NO PTO aperture. With continued development since it's creation in 1990 the engine driven Electromagnetic PTO clutch is the preferred method over electro-powerpacks.

**Solutions. From CVH-OMFB.**





## Whatever. Whenever

Getting it on the road is one thing.

Looking after it and ensuring it stays on the road - reliably and with complete on-going dependability - is another thing altogether...

Because our success is built on delivering the highest levels of support and customer service.

**And that's where CVH-OMFB excel.**



SERVICE







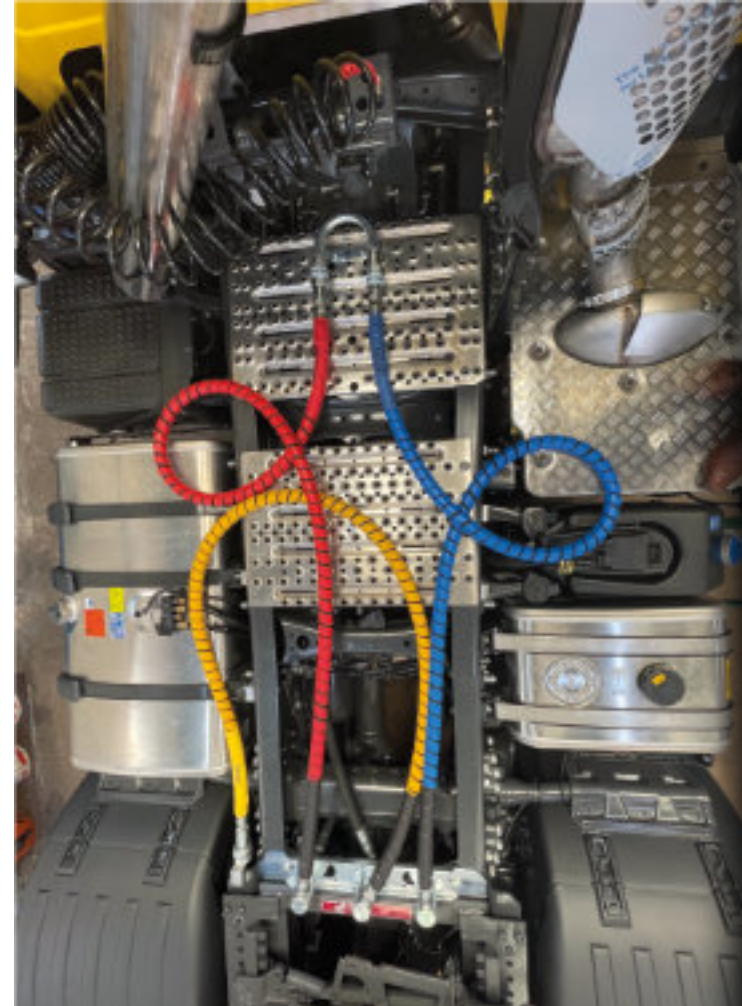
## Our VCA Approved Workshops

From South Normanton, we provide a full range of fitting, maintenance, repair and vehicle support service.

From Wet Kits and other ancillaries to tippers, salt spreaders, snow ploughs and a multitude of other applications, we have the skills, the resources, the experience and the know-how to exceed the highest standards of today's road transport sector.

Our skilled engineers truly have a passion for the art of hydraulics.

**Solutions. From CVH-OMFB.**





## It's an Ethos

Mechanical components go wrong, fact. What makes the difference is how you respond when they do.

And at CVH-OMFB, we have a total all-round commitment to ensuring a crisis never becomes a drama.

Solving the problem - making a decision and getting the vehicle back on the road, working again and earning its keep - is the priority. The details can be sorted out later...

We've invested in our staff, giving them the knowledge and skills to assist, all backed by £1 million worth of UK parts and stock available when you need them.

Investing in the processes required to deliver them to you - whenever and wherever the need arises.

**Solutions. That's what makes us different.**





Tail lifts: seen one, seen 'em all? Think again...

Anteo design and manufacture a wide range of application-specific tail lifts for vans, trucks and trailers.

From van to cantilever, retractable, column and even tuck-away truck/trailer designs, Anteo manufacture to the highest quality standards for long, dependable, trouble-free life.

Anteo UK supplies a huge range of tail lifts for the commercial vehicle industry. Using the latest technology and innovative design our tail lifts can solve the most demanding jobs. To find out more go to [About Anteo UK Ltd.](#)

With a nationwide network you are never far from an Anteo specialist to service and repair your Anteo tail lift. Carrying the largest parts stock within Europe, we've got you covered.

**Solutions. The anteo way.**



# SOLUTIONS



**CVH-OMFB Limited**  
Carter Lane East  
South Normanton  
Alfreton, Derbyshire  
DE55 2DY

† **01773 581983**

e [enquiries@cvhomfb.co.uk](mailto:enquiries@cvhomfb.co.uk)

w [cvhomfb.co.uk](http://cvhomfb.co.uk)

