

AgBot 2.055W4

Technical Specifications



Drive train

Deutz Diesel Engine

2.9l 4-stroke Deutz Diesel Engine, stage 5 with 55kW / 75hp, max. torque of 300Nm

Electric drive train

Electric drive train with a speed range from 0-13.5 km/h

Electric driven PTO

Optional electric driven PTO (up to 55kW and 700V) completely variable in adjustment

Diesel tank

220l diesel tank

HighVoltage connectors

Optional HighVoltage connectors (up to 55kW and 700V)



Hydraulics

Hydraulic pump

85l/min at 210bar hydraulic pump

Spool valves

Up to 3 double-acting proportional spool valves

Rear linkage

Three point rear linkage cat 2 (hooks cat 3)
4t maximum lift capacity at hooks

Front linkage

Three point front linkage cat 2
1.5t maximum lift capacity at hooks

Load sensing

Optional Load Sensing

Safety measures

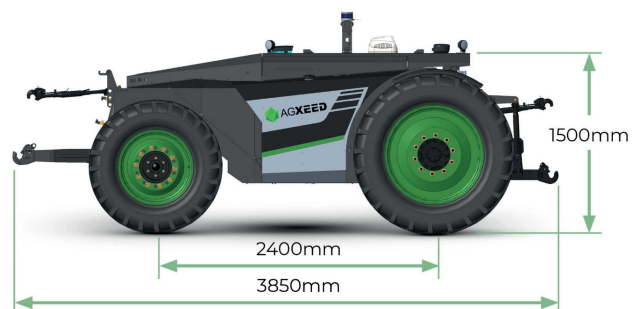
- ✓ **Geofence** system
- ✓ **Visual indicator** lights
- ✓ **Audible warning** alarm
- ✓ **Emergency stop buttons** around the machine

Obstacle detection system

- ✓ **LIDAR sensor** on the top of the machine
- ✓ **Ultrasonic sensors** integrated into the safety bumper
- ✓ **Radar sensors** integrated into the safety bumper
- ✓ **Contact sensitive bumper** integrated into the safety bumper

Machine dimensions






Length: 3850mm
Height: 1500mm
Width: min. 1800mm
Wheelbase: 2400mm
Empty weight: 3.2t



Wheel configuration



Wheel configurations from 270, 320, 540 and 710mm

 <p>TIRE TYPE 280/270mm (front/rear)</p> <p>TRACK CENTER 1500mm</p> <p>TRANSPORT WIDTH 1800mm</p>	 <p>TIRE TYPE 320/320mm (front/rear)</p> <p>TRACK CENTER 1500mm</p> <p>TRANSPORT WIDTH 1850mm</p>	 <p>TIRE TYPE 320/320mm (front/rear)</p> <p>TRACK CENTER 1800mm</p> <p>TRANSPORT WIDTH 2120mm</p>	 <p>TIRE TYPE 440/540mm (front/rear)</p> <p>TRACK CENTER 1800mm</p> <p>TRANSPORT WIDTH 2350mm</p>	 <p>TIRE TYPE 710/710mm (front/rear)</p> <p>TRACK CENTER 1900mm</p> <p>TRANSPORT WIDTH 2450mm</p>
---	---	---	---	---

Communication and positioning

Communications module for **bidirectional data transfer and RTK correction**

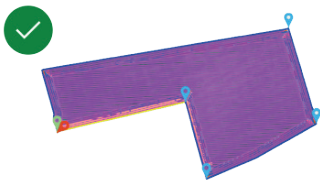
RTK GNSS for precise guidance and safe positioning: **+/- 2.5cm**



AGXCLOUD

Manage your farm through our application

Plan



- ✓ End-to-end, multi brand full season planning
- ✓ Planning provides the relevant level of detail
- ✓ Predictable and reliable planning, full transparency of the resources' usage milestones

Execute



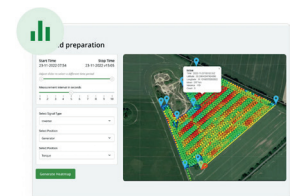
- ✓ Highest safety standards while unsupervised autonomous driving
- ✓ Adjust relevant settings in the field if necessary
- ✓ Flexibility, brand-agnostic in terms of implements

Control



- ✓ Full visibility of the running processes
- ✓ Choice of how much you get involved
- ✓ Access to all kinds of data in real time, interface for multiple roles

Optimise



- ✓ Data → actionable insights & Intuitive to use
- ✓ Truly open system
- ✓ Remote and predictable service possibilities

All specifications and dimensions undergo continuous development processes. Values and configurations may change over time.