



Southeastern Chapter

# 2025 IAEE SE CHAPTER SPONSOR BENEFITS BROCHURE

Contact  
Alicia Gilbert  
[info@iaeese.org](mailto:info@iaeese.org)  
(404) 474-0944  
[www.iaeese.org](http://www.iaeese.org)

# About the IAAE Southeastern Chapter

**“Our Association has been involved with the IAAE Southeastern Chapter for many years. We have sponsored various events and activities and have been pleased with the return on investment.”**

Gwen Venable,  
Executive Vice President  
of Communications for  
USPOULTRY and IAAE  
Southeastern Past Chair

With 1,400+ active members, the Southeastern Chapter of the International Association of Exhibitions and Events (IAEE) serves Alabama, Georgia, Florida, Mississippi, North Carolina and South Carolina, with Georgia, Florida and North Carolina being the top three states with the most membership.

Our mission at the Southeastern Chapter is to deliver relevant and highly focused services and activities designed to broaden the knowledge base, professional development and bottom lines of our members.

Recognizing that face-to-face networking is the backbone of our industry, the chapter hosts meetings or other events almost every month of the year including chapter luncheons, local meet-ups and the Annual Summer Classic.

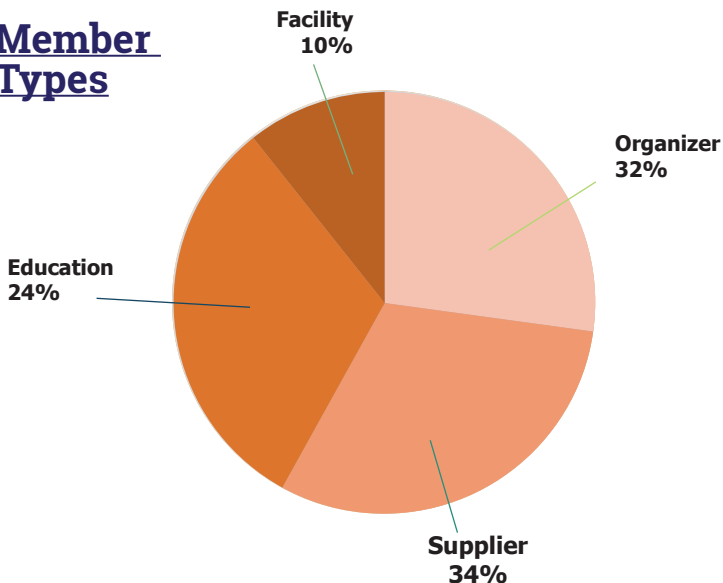
The IAAE Southeastern Chapter is the second largest chapter within IAAE, and we would not be able to provide valuable education, new solutions and networking opportunities without our sponsors. Being a sponsor of the Southeastern Chapter allows you to get in front of more than 1,400+ industry professionals!

**Top three states:**  
**Florida – 35%**  
**Georgia – 32%**  
**North Carolina – 21%**

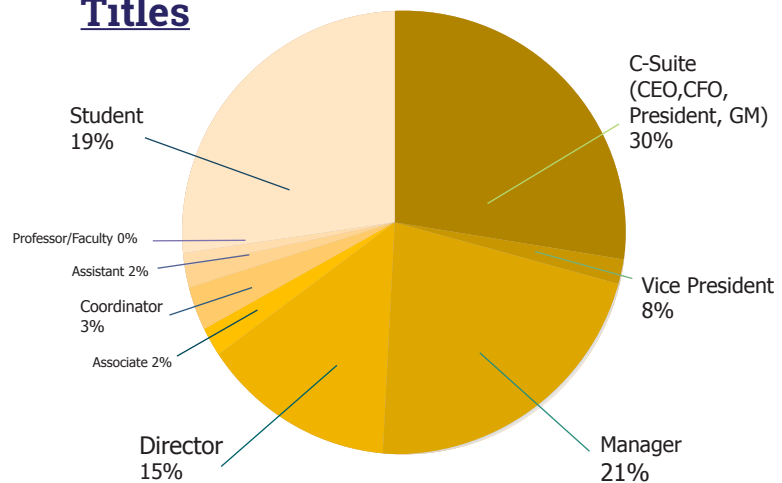


## Southeastern Chapter Breakdown (as of 1/1/2023)

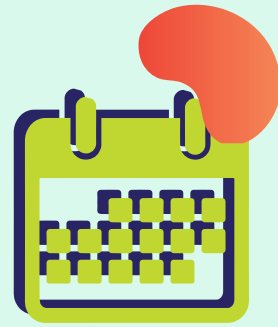
### Member Types



### Job Titles



# The Southeastern Chapter Has Many Events Planned for 2025



## Take Advantage of the Following Great Opportunities to Connect with Our Members!

### February 20, 2025

Chapter Educational Luncheon  
Freeman Office, Atlanta, GA

### April 24, 2025

Chapter Educational Luncheon  
Orlando, FL

### April 2025

TBA: Chapter Community Service  
Atlanta, GA and Orlando, FL

### May 2025

TBA: Chapter Meetups  
Location: Orlando & Atlanta

### July 2025

34th Annual Southeastern Classic  
Atlanta, GA

### October 23, 2025

Chapter Educational Luncheon  
Atlanta, GA

### November 2025

TBA: Chapter Meetups  
Location: Orlando & Atlanta

### December 4, 2025

Holiday Networking Luncheon (w/ GA MPI & PCMA SE)  
The Georgia Aquarium

### December 2025

TBA: GRITZ Reception @ Expo! Expo!  
Houston, TX



There Are Many Reasons to Engage with the IAEE Southeastern Chapter and Become a Sponsor!

- Build Brand Equity
- Drive New Sales Leads
- Enhance Existing Customer Relations
- Support the Southeastern Chapter
- Introduce and Test New Products and Services

## Many Thanks to Our Current & Previous Sponsors



# IAEE Southeastern Chapter Sponsorship Opportunities



## Educational Luncheon Sponsor

\$2,500

(3 available; does not include the Holiday Luncheon)

As one of the Chapters' education luncheon sponsors, your company receives unique opportunities to get in front of our membership, share your message, build brand awareness, publicize products and services, and network with industry leaders.

### Benefits Include:

- Two-minute presentation about you and your company; how the two minutes is used is up to you - speak, show a video or PPT, or combination
- Company recognition as the luncheon sponsor onsite and in advance promotion through luncheon registration e-communications
- Two luncheon registrations
- Follow-up email to attendees via chapter e-blast (approximate registration ranges from 50-75 people)
- Option to provide a giveaway or promo item at each seat, and/or table decorations, at your cost

NOTE: If interested in theming the event, please contact IAEE for further details

## GRITZ Reception Sponsor

\$3,500

(3 available)

Help support the SE Chapter as we host the annual Chapter happy hour at IAEE's Expo! Expo! It is a wonderful opportunity to network with Chapter members and build brand awareness! The event typically lasts two hours with around 125 people attending.

### Benefits include:

- Recognition as a GRITZ sponsor
- Welcome to all attendees (there will be no audio visual, so please plan accordingly)
- Logo recognition on table cards
- Recognition on all event advertising



## SE Classic Sponsorship Options

(limited availability – pricing below per event option) (in-person, with a virtual component)

Support the SE Chapter and receive opportunities to build your company's exposure by selecting one of the Chapter's most well-attended events! Held annually, this is the SE Chapter's signature event.

### Event options include:

- Breakfast - \$2,500 (2 available)
- Speaker - \$1,500 (8 available)
- In-Kind - Goody Bags, Transportation and Door Prizes (unlimited availability)

### Benefits include:

- Recognition on event signage during the corresponding event
- Recognition on the SE Classic registration form (hard copy & e-version)
- Recognition on e-communications related to the event(s)

**Community Service**

**(2 events available)**

\$1,500

Includes one Community Service event.

**Benefits Include:**

- Posting on SE Chapter website sponsor page
- In-advance promotion through community service registration e-communications
- Your logo on community service attendee wear (i.e. apron, hat, t-shirt, etc.)

**Meet-up**

**(2 events available)**

\$2,500

Includes one Chapter Meetup to welcome and network with attendees.

**Benefits Include:**

- Posting on SE Chapter website sponsor page
- In-advance promotion through meetup registration e-communications
- Two complimentary admissions to attend the sponsored event(s).

NOTE: If interested in theming the event, please contact IAEE for further details.

**Build Your Own Customized Sponsorship**

**(unlimited)**

\$ amount  
TBD

Don't see the perfect opportunity listed here? Need to bundle features from different options? Put your organization/brand in front of the entire Southeast Chapter with a Customized Sponsorship opportunity! We will work with you to design an opportunity, experience or event (virtual or in-person) specifically to fit your organization's needs. Budgets can be discussed. Let us work with you to determine how we can focus on the benefits the chapter offers which are most important to your organization. Creativity welcome!

**Chapter e-Communications**

**(unlimited)**

\$500

The SE Chapter will post your company logo with a link to your company URL on all email communications to members for 3 months.

**Friends of the Chapter**

**(unlimited)**

\$250

Purchase a \$250 Friends of the Chapter Sponsorship and your company's logo and URL will be posted and linked on the SE Chapter website for 12 months.

**In-Kind**

**(unlimited)**

No budget, but want to support the chapter through sponsored services, items or other means? IAEE SE Chapter welcomes in-kind sponsorships.

Held at the Georgia Aquarium, this special luncheon brings together three industry groups with an average attendance of around 350 people. The Southeastern Chapter is joined by the MPI Georgia Chapter and the PCMA Southeastern Chapter.

**Event options:**

**Benefits include:**

**Coat Check**  
\$500

- Signage with logo at coat check
- Logo included in event marketing materials and e-communications

**Student Registration**  
\$500

- 10 student registrations to be awarded by the chapters
- Signage with logo at student tables
- Logo included in event marketing materials and e-communications

**Event Table**  
\$700

- One holiday luncheon registration
- (1) Hi-boy in the pre-function area
- Logo included in event marketing materials and e-communications
- Option to provide a giveaway or promo item, at your cost

**Event Sponsor**  
\$3,500

- 3 minutes of podium time
- Two holiday luncheon registrations
- (1) 6-foot table exhibit in the registration area
- Logo included in event marketing materials and e-communications
- Logo listed on all of the onsite information – program, presentation slides, etc.
- Option to provide a giveaway or promo item at each seat, and/or table decorations, at your cost



# 2025 IAEE Southeastern Chapter Sponsor Agreement

Contact Name \_\_\_\_\_ Title \_\_\_\_\_

Partner Organization \_\_\_\_\_

Address \_\_\_\_\_

City \_\_\_\_\_ ST \_\_\_\_\_ Zip \_\_\_\_\_

Phone \_\_\_\_\_ Email \_\_\_\_\_

**Community Service**  
\$1,500  
**2 Available**

**Education Luncheon Sponsor**  
\$2,500

**Meet & Greet**  
\$2,500  
**2 Available**

**GRITZ Reception Sponsor**  
\$3,500  
**3 Available**

### SE Classic Sponsorship

\$2,500 (Breakfast) **2 Available**

\$1,500 (Speaker) **8 Available**

(In-Kind) **Unlimited Availability**

### Holiday Networking Luncheon

\$500 Coat Check **1 Available**

\$500 Student Registration **1 Available**

\$700 Event Table **5 Available**

\$3,500 Event Sponsor **2 Available**

**Chapter e-Communications**  
\$500  
**Unlimited Available**

**Friends of the Chapter**  
\$250  
**Unlimited Availability**

**Build Your Own Customized Sponsorship**  
TBD  
**Unlimited**

**In-Kind**  
Please contact us to discuss  
**Unlimited**



#### Deadlines:

Full payment is due within 30 days of agreement being received. Design, copy and logos provided by partner according to specifications.

#### Terms:

This agreement confirms the above Company will partner with IAEE Southeastern Chapter at the level(s) marked above with the benefits listed above. Benefits begin as soon as 7 days after receipt of agreement, company logo, etc. and continue for one year.

By signing this agreement, you are making a commitment in accordance with the corresponding rates. An emailed, signed copy of this Agreement is acceptable. Partner/Association are responsible for ensuring each other's compliance with the terms and deadlines contained herein. Payments should be made within 30 days of agreements being received. Payments are nonrefundable.

**An emailed, signed copy of this Agreement is acceptable.** Partner/Association are responsible for ensuring each other's compliance with the terms and deadlines contained herein. Payments should be made within 30 days of agreements being received. Payments are nonrefundable.

Partner/Association agrees that the IAEE SE Chapter's liability (if any), due to omissions or errors in such sponsor/marketing items, shall in no event exceed the amount of charges paid by Partner/Association for the listing or sponsorship/marketing item which was omitted or in which the error occurred.

#### Payment in full is due within 30 days of commitment.

Please indicate if you would prefer to pay via check or credit card. If paying by credit card, a link will be sent to you to complete your payment.

**Payment preference (circle one):**                      Check                      Credit Card

I have read and agree to the terms as set forth on this document, this day of \_\_\_\_\_

By: \_\_\_\_\_

Title: \_\_\_\_\_

**Email this completed form to Alicia Gilbert, at [info@iaeese.org](mailto:info@iaeese.org). You will be invoiced for payment following receipt of your selections.**

