



RAI AMSTERDAM
12-15 SEPTEMBER 2025

Balcony Suites



IBC2025

BALCONY SUITES



All upgrade items can be booked via the [RAI Exhibitor Services Webshop](#).
For questions, please contact the RAI Exhibitor Services department.

☎ 0031 20 549 1928
exhibitorservices@rai.nl

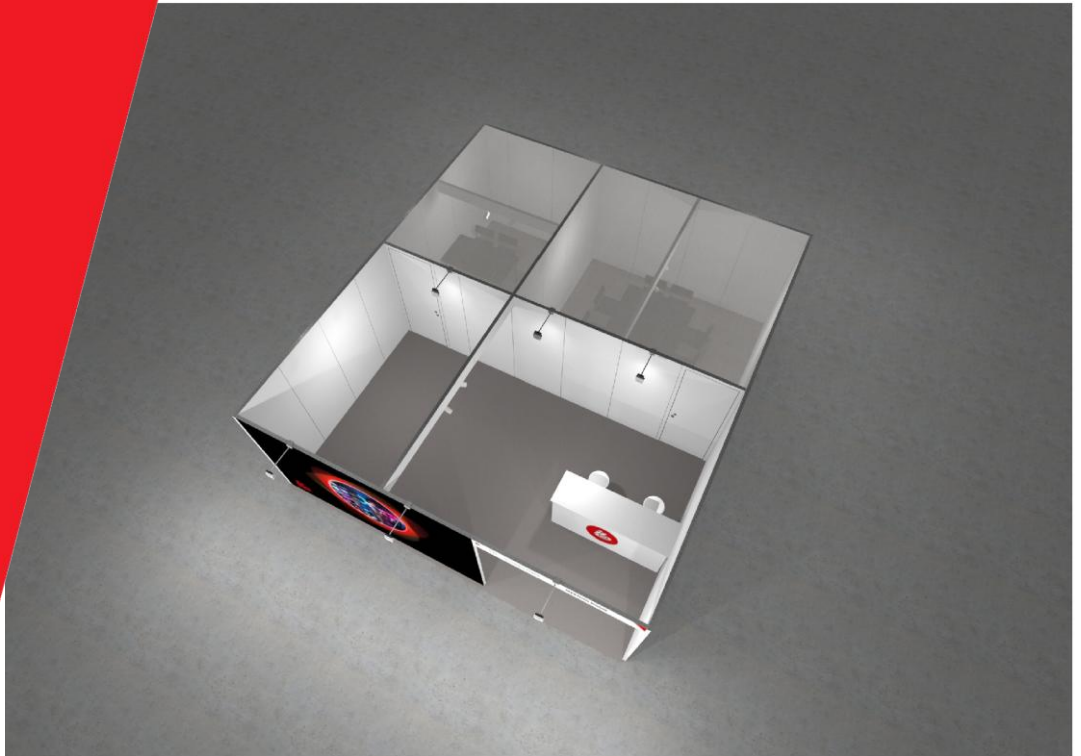
rai
AMSTERDAM



RAI AMSTERDAM

12-15 SEPTEMBER 2025

Balcony Suites



Balcony Suite (based on 48.75m²)

- Premium quality stand walls (2.5m high)
 - Company name and balcony suite number
 - Ceiling plinth for stability and lights
 - Two interior meeting rooms with muslin cloth ceiling
 - Smaller meeting room to seat up to 4 people
 - Larger meeting room to seat up to 8 people
 - Exterior wall graphic (across the front of the balcony suite)
 - Option to upgrade and add graphics to other wall panels
 - Reception desk 2mx1m (WxH) with full colour graphic on the front panel
 - Furniture package: 3x tables; 12x chairs; 2x barstools for the reception desk
 - Dark grey carpet
 - 2 x 3kW (13A) daytime power supply including one double wall socket
 - LED spotlights
 - Basic stand cleaning
- 1x technical drawing and visual included. Design updates will be subject to an additional fee of €90 per hour.



All upgrade items can be booked via the [RAI Exhibitor Services Webshop](#).
For questions, please contact the RAI Exhibitor Services department.

☎ 0031 20 549 1928
exhibitorservices@rai.nl

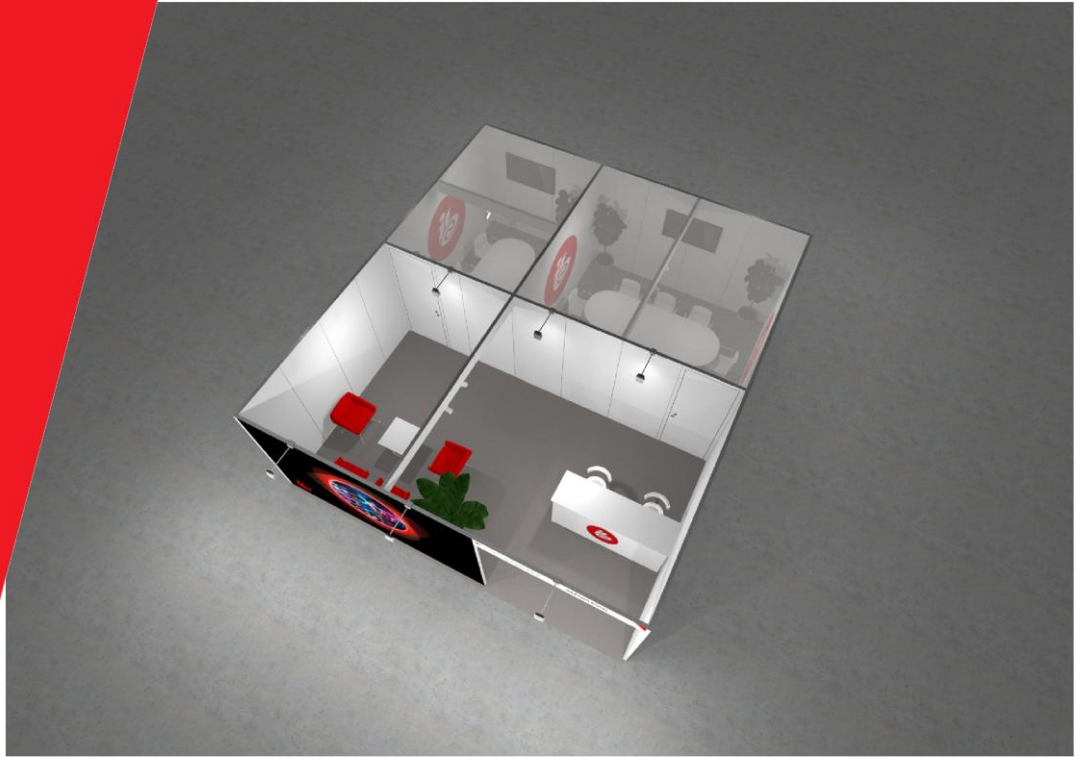
rai
AMSTERDAM



RAI AMSTERDAM

12-15 SEPTEMBER 2025

Balcony Suite upgrade options



Balcony Suite upgrade options

- Power
- Internet
- Water connection
- Graphics
- Mini market
- Catering service
- Furniture
- Plants & flowers
- Electrical appliances
- Audio/Visual equipment
- Temporary staff



All upgrade items can be booked via the [RAI Exhibitor Services Webshop](#).
For questions, please contact the RAI Exhibitor Services department.

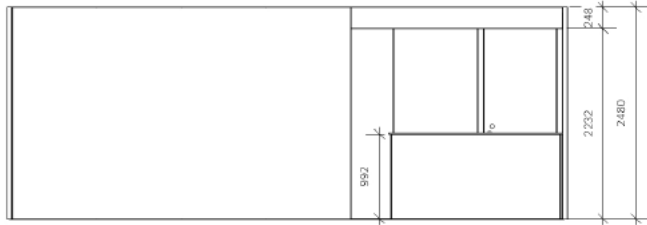
☎ 0031 20 549 1928
exhibitorservices@rai.nl



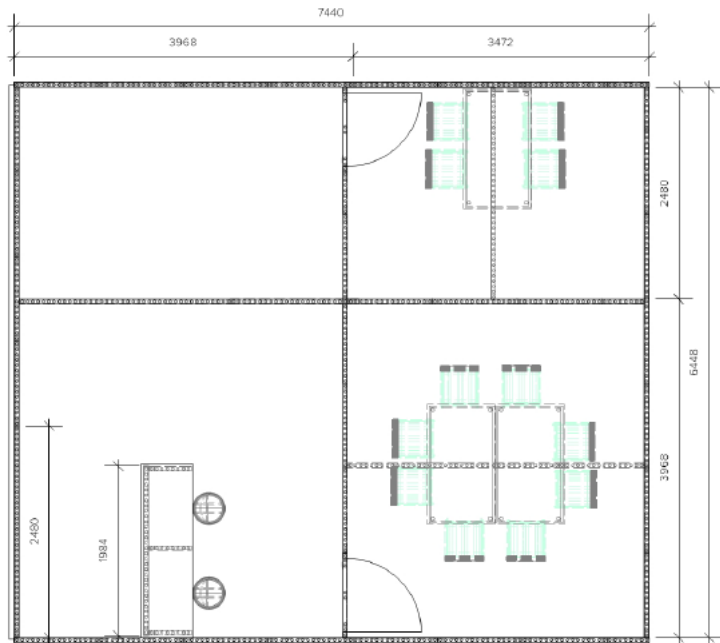
RAI AMSTERDAM

12-15 SEPTEMBER 2025

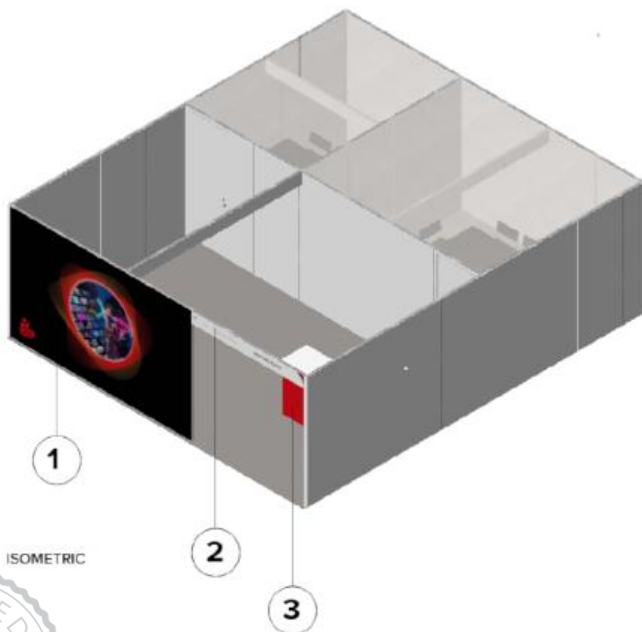
Balcony Suite specifications



FRONT



TOP



ISOMETRIC

Print size (width x height)

1. 3968 x 2480 mm
2. 2480 x 248 mm
3. 1984 x 992 mm



All upgrade items can be booked via the [RAI Exhibitor Services Webshop](#).
For questions, please contact the RAI Exhibitor Services department.

☎ 0031 20 549 1928
exhibitorservices@rai.nl





RAI AMSTERDAM

12-15 SEPTEMBER 2025

Electricity

Power consumption list (for reference only)

Halogen lights 12v	50W
Fluorescent lights (max p. unit)	100W
Refrigerator (small)	500W
Refrigerator (large)	1000W
Freezer	2000W
Coffee machine (small)	1000W
Coffee machine (large)	3000W
Microwave	1200W
Kitchen rental unit	2x 3000W
Computer	400W
Laptop	500W
Plasma screen	650W
LCD television	200W
Video projector (large)	2500W
Copier machine	3000W
Dishwasher	3000W
Boiler	3000W
Kettle	1000W

*1000W = 1 kW



All upgrade items can be booked via the [RAI Exhibitor Services Webshop](#).
For questions, please contact the RAI Exhibitor Services department.

☎ 0031 20 549 1928
exhibitorservices@rai.nl