



RAI AMSTERDAM
11-14 SEPTEMBER 2026

Balcony Suites



IBC2026

BALCONY SUITES



All upgrade items can be booked via the [RAI Exhibitor Services Webshop](#).
For questions, please contact the RAI Exhibitor Services department.

☎ 0031 20 549 1928
exhibitorservices@rai.nl

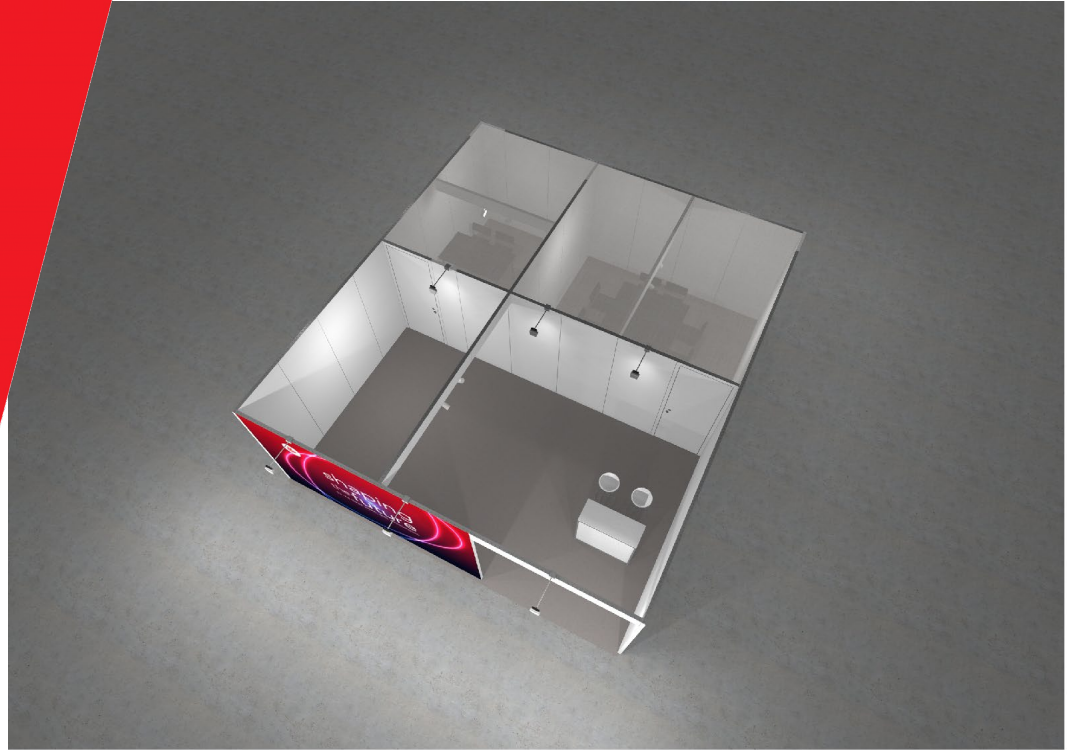
rai
AMSTERDAM



RAI AMSTERDAM

11-14 SEPTEMBER 2026

Balcony Suites



Balcony Suite (based on 48.75sqm)

- Premium quality shell scheme walls (2.5m high)
 - Exterior wall graphic included (across the front of the balcony suite)
 - Option to upgrade and add graphics to remaining wall panels
 - Two interior meeting rooms with muslin cloth ceiling
 - Smaller meeting room for up to 4 people
 - Larger meeting room for up to 8 people
 - Ceiling plinth for stability and lights
 - Lockable reception counter
 - Option to upgrade and add graphics to the reception counter
 - 3 x tables; 12 x chairs; 2 x high stools (for reception area)
 - 2 x 3kW (13A) daytime power supply including one double wall socket
 - LED spotlights
 - Company name and balcony suite number
 - Dark grey carpet
 - Basic stand cleaning
- 1x technical drawing and visual included. Design updates will be subject to an additional fee of €90 per hour.



All upgrade items can be booked via the [RAI Exhibitor Services Webshop](#).
For questions, please contact the RAI Exhibitor Services department.

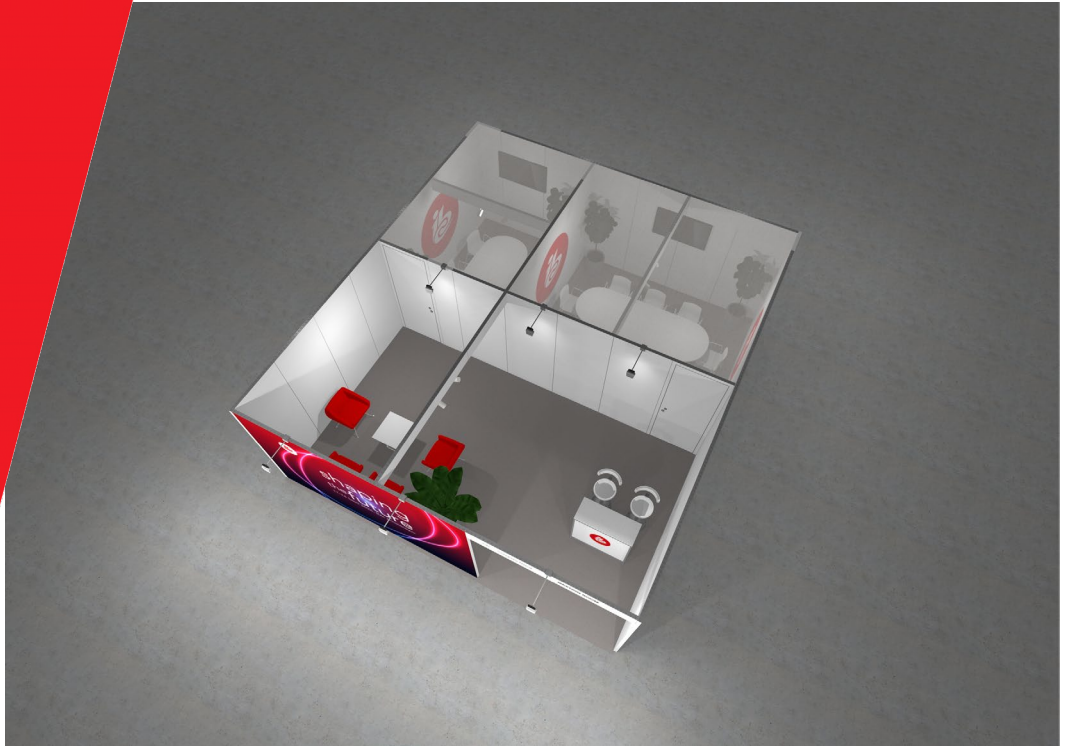
☎ 0031 20 549 1928
exhibitorservices@rai.nl

rai
AMSTERDAM



RAI AMSTERDAM
11-14 SEPTEMBER 2026

Balcony Suite Upgrade Options



Balcony Suite upgrade options

- Power
- Internet
- Water connection
- Graphics
- Lighting
- Mini market
- Catering service
- Furniture
- Plants & flowers
- Electrical appliances
- Temporary staff
- Audio/Visual equipment
- Wall reinforcement (required for affixed TV screens) - cost from €192.80 excl. VAT



All upgrade items can be booked via the [RAI Exhibitor Services Webshop](#).
For questions, please contact the RAI Exhibitor Services department.

☎ 0031 20 549 1928
exhibitorservices@rai.nl

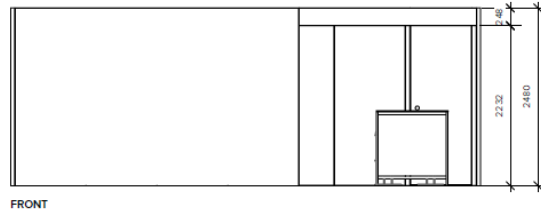
rai
AMSTERDAM



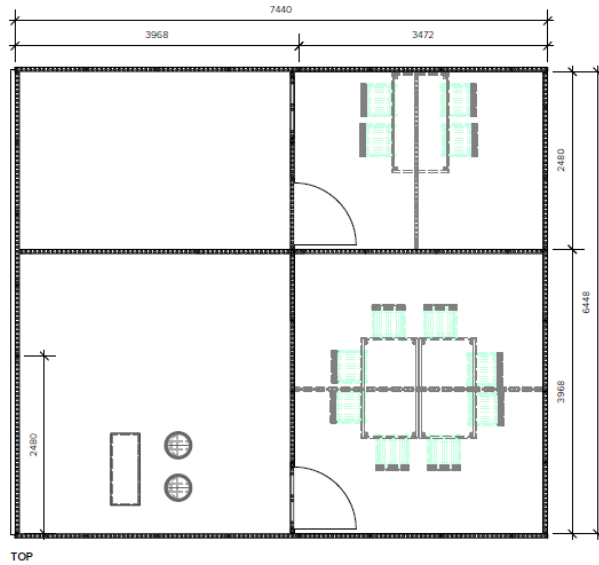
RAI AMSTERDAM

11-14 SEPTEMBER 2026

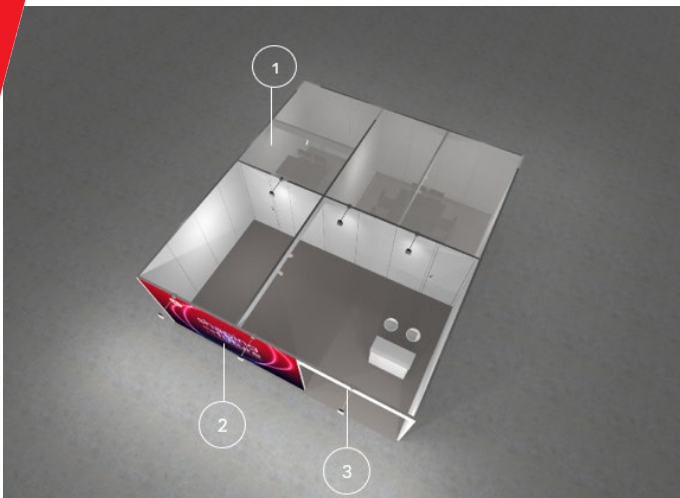
Balcony Suite Technical Drawing



FRONT



TOP



Print size (WxH)

1. 3968 x 2480 mm
2. 2480 x 248 mm
3. 1984 x 992 mm



All upgrade items can be booked via the [RAI Exhibitor Services Webshop](#).
For questions, please contact the RAI Exhibitor Services department.

☎ 0031 20 549 1928
exhibitorservices@rai.nl





RAI AMSTERDAM

11-14 SEPTEMBER 2026

Electricity

Power consumption list (for reference only)

Halogen lights 12v	50W
Fluorescent lights (max p. unit)	100W
Refrigerator (small)	500W
Refrigerator (large)	1000W
Freezer	2000W
Coffee machine (small)	1000W
Coffee machine (large)	3000W
Microwave	1200W
Kitchen rental unit	2x 3000W
Computer	400W
Laptop	500W
Plasma screen	650W
LCD television	200W
Video projector (large)	2500W
Copier machine	3000W
Dishwasher	3000W
Boiler	3000W
Kettle	1000W

*1000W = 1 kW



All upgrade items can be booked via the [RAI Exhibitor Services Webshop](#).
For questions, please contact the RAI Exhibitor Services department.

☎ 0031 20 549 1928
exhibitorservices@rai.nl



RAI AMSTERDAM
11-14 SEPTEMBER 2026



IBC2026

Rate Card

Power

[Daytime power 3 kW \(incl. double wall socket\)](#)

[Daytime power 10 kW \(incl. CEE 16A\)](#)

[Continuous power 3 kW \(incl. double wall socket\)](#)

[Continuous power 10 kW \(incl. CEE 16A\)](#)

[Additional wall socket \(excl. daytime power\)](#)

[Power during build-up and breakdown](#)

Internet

[2 Mbps internet connection](#)

[10 Mbps internet connection](#)

AV

[55" Touchscreen](#)

[55" LED 4K screen](#)

Cleaning

[Upgrade to all-inclusive stand cleaning](#)

[Residual waste container \(1 m³\)](#)

Graphics

[Seamless graphic 250cm high 315euro per linear meter](#)



All upgrade items can be booked via the [RAI Exhibitor Services Webshop](#).
For questions, please contact the RAI Exhibitor Services department.

☎ 0031 20 549 1928
exhibitorservices@rai.nl

rai
AMSTERDAM