



**RAI AMSTERDAM**  
**11-14 SEPTEMBER 2026**

**Future Tech IGNITE Stand**



**IBC2026**

**FUTURE TECH IGNITE STAND**



All upgrade items can be booked via the [RAI Exhibitor Services Webshop](#).  
For questions, please contact the RAI Exhibitor Services department.

☎ 0031 20 549 1928  
[exhibitorservices@rai.nl](mailto:exhibitorservices@rai.nl)

**rai**  
AMSTERDAM



# RAI AMSTERDAM

## 11-14 SEPTEMBER 2026

### Future Tech IGNITE Stand



#### Future Tech IGNITE Stand

- Basic shell scheme stand (4 sqm)
- 1 x high table; 2 x high stools
- Lockable counter with full colour logo on the front panel included
- 1 x 3kW (13A) daytime power supply including one double wall socket
- 1 x LED spotlight
- Company name and stand number
- Black carpet tiles
- Basic stand cleaning
- Exhibitor Wi-Fi (for personal devices)
- *Future Tech IGNITE branded back wall - branding is non-customisable by exhibitors*



All upgrade items can be booked via the [RAI Exhibitor Services Webshop](#).  
For questions, please contact the RAI Exhibitor Services department.

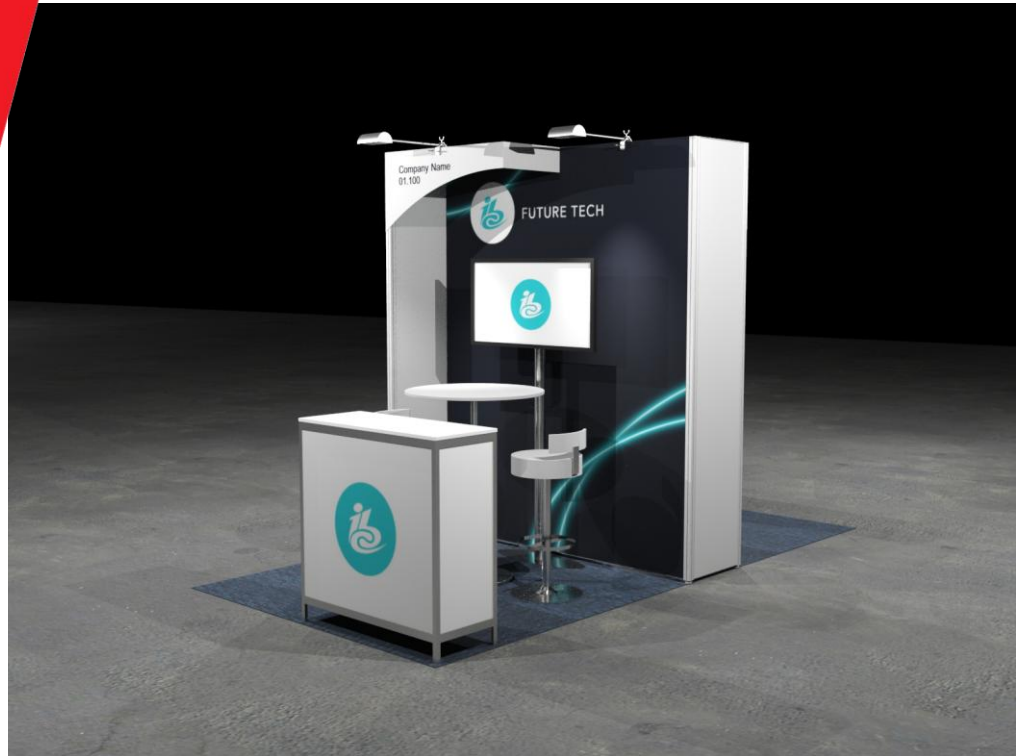
☎ 0031 20 549 1928  
[exhibitorservices@rai.nl](mailto:exhibitorservices@rai.nl)

**rai**  
AMSTERDAM



**RAI AMSTERDAM**  
**11-14 SEPTEMBER 2026**

**Future Tech IGNITE Stand  
Upgrade Options**



**Future Tech IGNITE Stand - Upgrade Options**

- Power
- Internet
- Lighting
- Mini market
- Catering service
- Furniture
- Plants & flowers
- Electrical appliances
- Temporary staff
- Audio/Visual equipment
- Wall reinforcement (required for affixed TV screens) - cost from €192.80 excl. VAT



All upgrade items can be booked via the [RAI Exhibitor Services Webshop](#).  
For questions, please contact the RAI Exhibitor Services department.

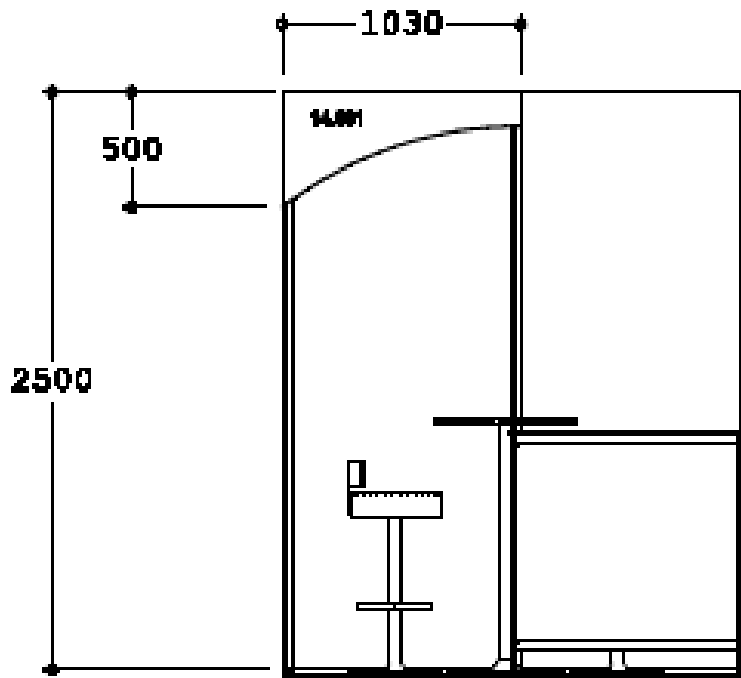
☎ 0031 20 549 1928  
[exhibitorservices@rai.nl](mailto:exhibitorservices@rai.nl)

**rai**  
AMSTERDAM



**RAI AMSTERDAM**  
**11-14 SEPTEMBER 2026**

**Future Tech IGNITE Stand  
Technical Drawing**



All upgrade items can be booked via the [RAI Exhibitor Services Webshop](#).  
For questions, please contact the RAI Exhibitor Services department.

☎ 0031 20 549 1928  
[exhibitorservices@rai.nl](mailto:exhibitorservices@rai.nl)

**rai**  
AMSTERDAM



# RAI AMSTERDAM

## 11-14 SEPTEMBER 2026

### Electricity

#### Power consumption list (for reference only)

Halogen lights 12v	50W
Fluorescent lights (max p. unit)	100W
Refrigerator (small)	500W
Refrigerator (large)	1000W
Freezer	2000W
Coffee machine (small)	1000W
Coffee machine (large)	3000W
Microwave	1200W
Kitchen rental unit	2x 3000W
Computer	400W
Laptop	500W
Plasma screen	650W
LCD television	200W
Video projector (large)	2500W
Copier machine	3000W
Dishwasher	3000W
Boiler	3000W
Kettle	1000W

\*1000W = 1 kW



All upgrade items can be booked via the [RAI Exhibitor Services Webshop](#).  
For questions, please contact the RAI Exhibitor Services department.

☎ 0031 20 549 1928  
[exhibitorservices@rai.nl](mailto:exhibitorservices@rai.nl)



# RAI AMSTERDAM

## 11-14 SEPTEMBER 2026



# IBC2026

## Rate Card

### Power

[Daytime power 3 kW \(incl. double wall socket\)](#)

[Daytime power 10 kW \(incl. CEE 16A\)](#)

[Continuous power 3 kW \(incl. double wall socket\)](#)

[Continuous power 10 kW \(incl. CEE 16A\)](#)

[Additional wall socket \(excl. daytime power\)](#)

[Power during build-up and breakdown](#)

### Internet

[2 Mbps internet connection](#)

[10 Mbps internet connection](#)

### AV

[55" Touchscreen](#)

[55" LED 4K screen](#)

### Cleaning

[Upgrade to all-inclusive stand cleaning](#)

[Residual waste container \(1 m<sup>3</sup>\)](#)

### Graphics

[Seamless graphic 250cm high 315euro per linear meter](#)



All upgrade items can be booked via the [RAI Exhibitor Services Webshop](#).  
For questions, please contact the RAI Exhibitor Services department.

☎ 0031 20 549 1928  
[exhibitorservices@rai.nl](mailto:exhibitorservices@rai.nl)