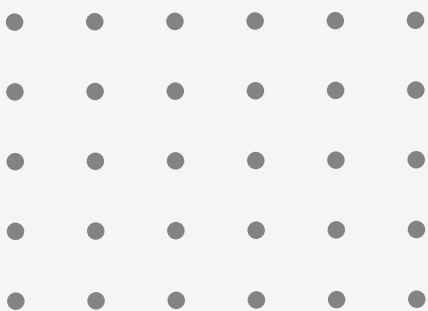


# Transform Your Construction Projects with Real-Time Cost & Carbon Insights



Sterling's SaaS platform empowers you to estimate, forecast, and manage cost and carbon with precision, from start to finish



**Sterling is revolutionising the way construction companies estimate, plan, and execute their projects. With a focus on both cost and carbon**

**Sterling integrates the entire construction lifecycle, from accurate estimating and forecasting to seamless bid package management and lifecycle assessment. We empower project managers, quantity surveyors, and estimators to make more informed decisions, reduce environmental impact, and deliver projects on time and within budget.**

Sterling's platform is designed to provide real-time, data-driven insights that integrate seamlessly with your existing workflows, enabling better collaboration, more transparency, and faster decision-making across your team and with your partners.

## Key Features of Sterling

Sterling offers four core modules that address the most crucial aspects of project estimation and budget setting in construction:

- **Cost & Carbon Estimating:** Make precise estimates for labour, plant, material, and subcontract resources, while also tracking the associated carbon footprint.
- **Integrated 2D and 3D Take-off:** Gain accurate measurements directly from digital plans and models, reducing errors and improving efficiency. Sterling's integrated 2D and 3D take-off capabilities allow users to extract precise data from both 2D drawings and 3D models, enabling faster, more accurate estimating. This feature streamlines the take-off process, supporting both design and estimation teams with easy access to key project details for cost and carbon estimating.
- **Bid Packages:** Streamline the creation, management, and submission of bid packages, allowing you to collaborate more effectively with subcontractors and suppliers.
- **Forecasting:** Stay on top of project performance with real-time forecasting that predicts both costs and carbon impacts based on your project's unique data.
- **Lifecycle Assessment:** Track cost and carbon across the entire project lifecycle, from inception through to handover, operational and end of life ensuring sustainability and budget goals are met.

# Who Can Benefit from Sterling?

Sterling is designed for construction professionals who need more than just a tool to estimate costs. Our platform supports anyone involved in construction planning, estimating, and management, including:

- **Project Managers:** Gain real-time insights into cost and carbon projections to make informed decisions at every stage of the project.
- **Quantity Surveyors (QSs):** Produce accurate cost plans and carbon estimates that align with sustainability goals and client requirements.
- **Estimators:** Access detailed resource-based estimating tools that ensure your cost and carbon estimates are accurate and reliable.
- **Contractors and Subcontractors:** Streamline bidding, package management, and communication for a more efficient project workflow.

Sterling is adaptable and scalable, making it the ideal solution for projects of all sizes – from small developments to large-scale infrastructure projects.

## Trusted By



and more....

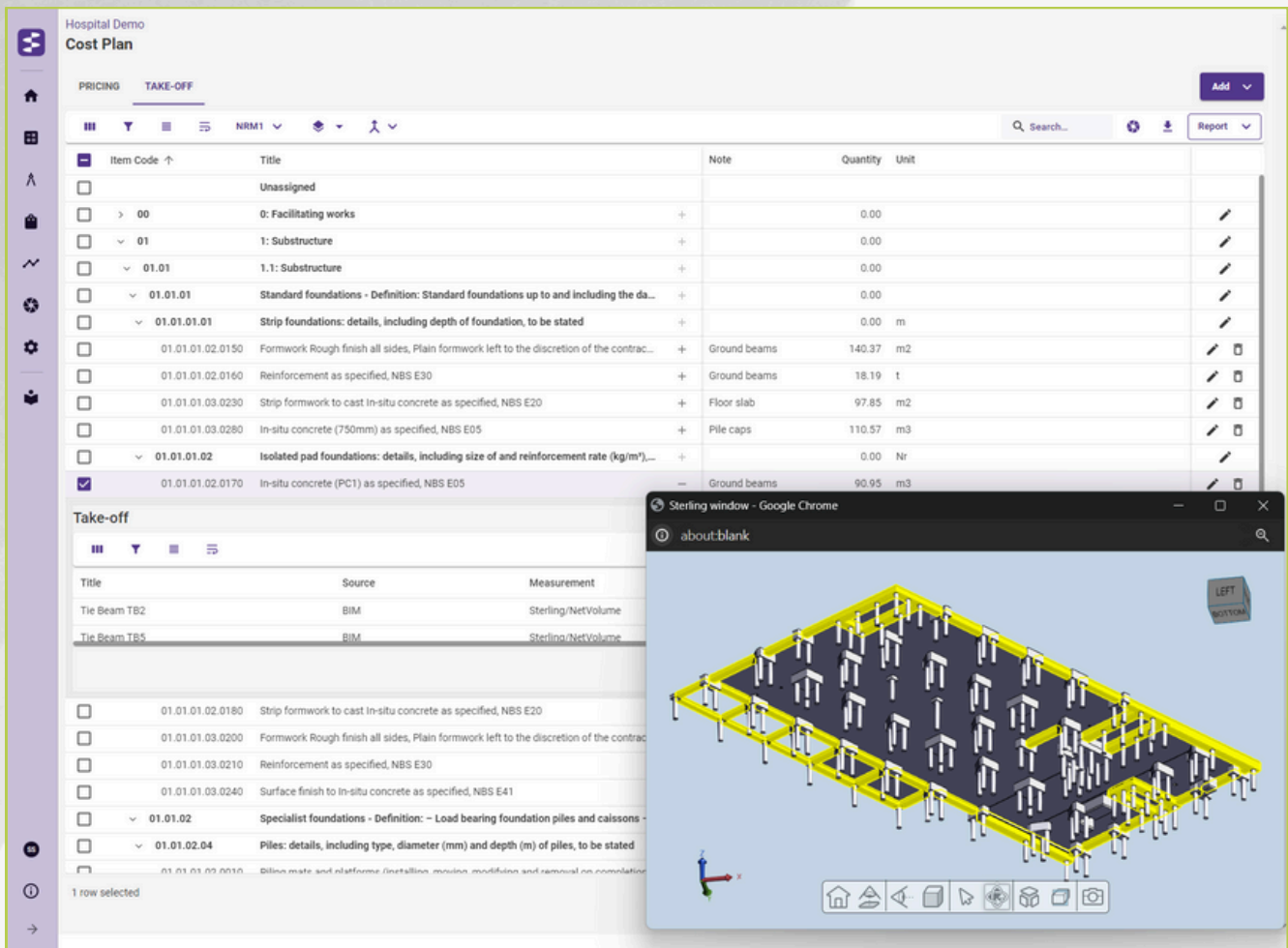
## Value Proposition

Sterling is the only solution that combines cost, carbon, and lifecycle management into a single, user-friendly platform. Unlike traditional tools that are siloed and outdated, Sterling offers a comprehensive, integrated solution that makes it easier for teams to collaborate, forecast, and track progress. We enable businesses to stay ahead of the curve with real-time data that drives sustainability, efficiency, and profitability.

Our platform's intuitive interface and seamless integrations ensure that your teams can focus on what matters most – delivering high-quality, on-budget, and sustainable construction projects.

# Cost & Carbon Estimating

Sterling's Cost & Carbon Estimating module empowers you to create highly accurate, resource-based cost and carbon estimates. This module integrates seamlessly with 2D and 3D Take-off, allowing you to extract precise measurements from your project's plans and models.

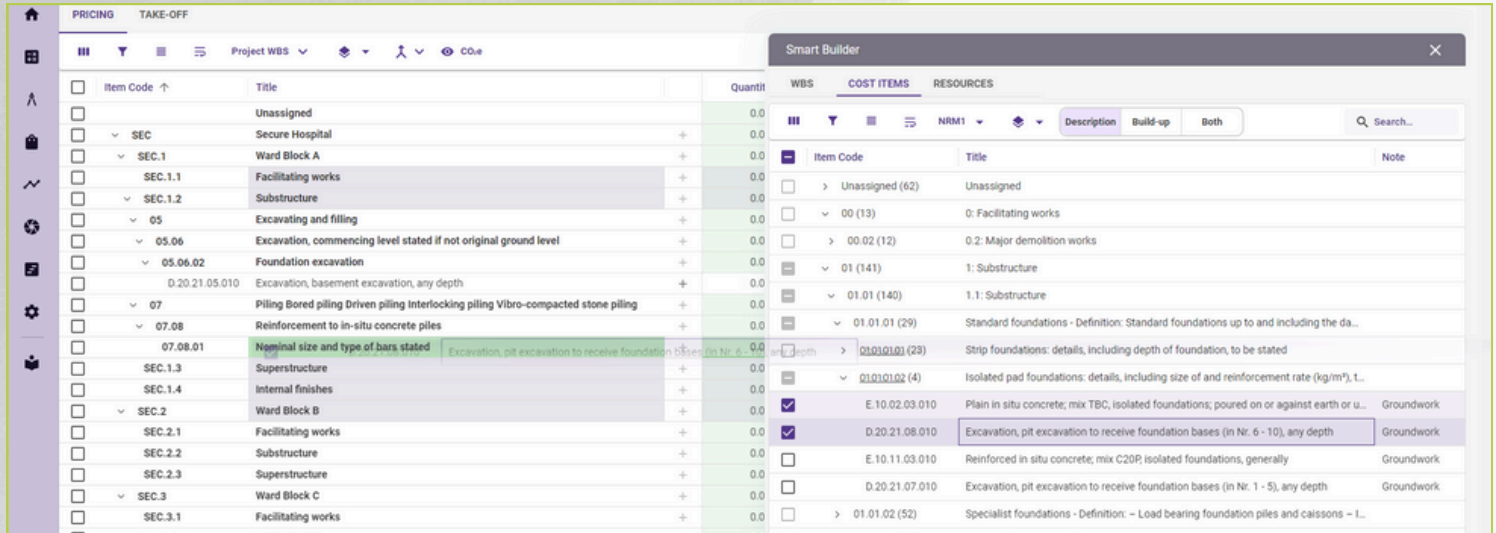


- **Resource-Based Estimating:** Estimate costs for labour, plant, materials, and subcontractors while tracking the associated carbon impact. Sterling ensures that every aspect of your project's resources is accounted for, allowing you to make more informed and sustainable decisions.
- **2D and 3D Take-off:** Use integrated 2D drawings and 3D models to extract quantities and dimensions with ease. Whether you're working with traditional plans or modern 3D BIM models, Sterling ensures that your take-off is fast, accurate, and based on the most up-to-date design information.
- **Report Writer:** Create custom reports that provide a detailed breakdown of both cost and carbon estimates. With Sterling's Report Writer, you can generate tailored reports that highlight key data for stakeholders, helping ensure transparency and accountability throughout the project.



# Smart Builder: Easy Drag-and-Drop Cost Planning

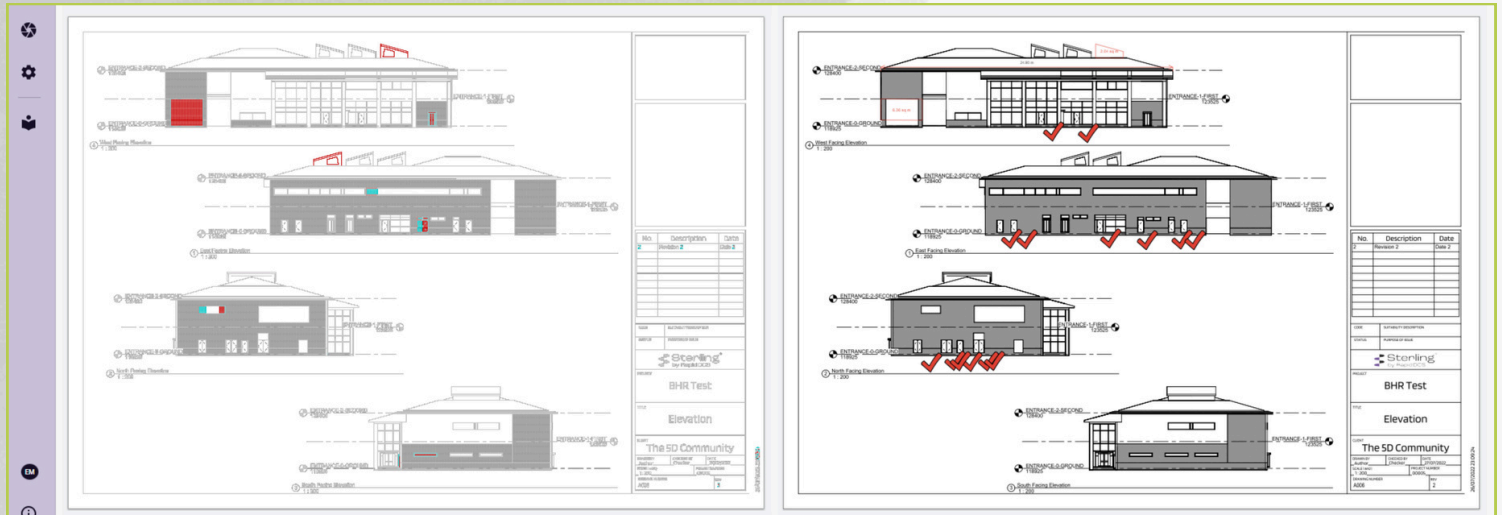
Sterling's Smart Builder revolutionises the way you build and manage cost plans & estimates, making it easier and faster than ever to create detailed and accurate estimates. With its intuitive drag-and-drop interface, Smart Builder allows you to seamlessly move from high-level breakdown structures (such as ICMS, NRM, SMM7, or custom structures) to detailed cost items and activities, and then allocate resources (labour, plant, material, etc.), all within one unified platform.



- **Flexible Breakdown Structures:** Sterling Smart Builder enables you to work with a variety of breakdown structures, including ICMS, NRM, SMM7 & more (or custom breakdowns tailored to your project). This flexibility ensures that you can align your cost and carbon estimating process with the required standards, while adapting to your project's specific needs.
- **Drag-and-Drop Interface:** The user-friendly drag-and-drop functionality makes it easy to map cost items and activities from your breakdown structure to the resources needed to complete them. With just a few clicks, you can assign Labour, Plant, Material, and other resources directly to cost items, allowing you to build a comprehensive cost plan effortlessly.
- **Seamless Integration with Estimating:** Once your cost items and activities are mapped, Smart Builder integrates with your cost and carbon estimating modules, enabling you to generate accurate estimates based on real-time data. This integration ensures that your cost plans reflect up-to-date resource costs, carbon emissions, and project-specific requirements.

# Take-off: Seamlessly Integrating Quantities

Sterling's Take-off feature is designed to streamline the process of quantity extraction, helping you create accurate cost estimates with ease. Whether working with 2D drawings, 3D models, or manual take-off (DIM sheets), Sterling provides a fully integrated solution that links quantities directly to your cost plans and estimates. With our built-in formula engine and drag-and-drop functionality, managing quantities and costs has never been easier.



- **2D Take-off:** Sterling allows you to easily extract quantities from 2D drawings. Simply upload your plans in formats such as PDF, DWG, DGN, DXF, DWF, and others, and Sterling's intelligent Smart Take-off tool automatically detects key features, measuring counts and areas. This reduces the manual effort and potential for error, making it quicker to generate accurate take-off data.
- **3D Take-off:** For projects using 3D models, Sterling enables precise measurements directly from BIM models. The platform supports various file formats, including **IFC**, **Revit**, and **Navisworks**, allowing you to extract 3D quantities directly into your estimate. This ensures that you're always working with the most up-to-date model, providing a higher level of accuracy and reducing the risk of discrepancies.
- **Manual Take-off (DIM Sheets):** In addition to automated 2D and 3D take-off, Sterling allows for manual take-off using DIM sheets, where you can input data from hand measurements or other sources. This flexibility ensures that you can capture all required quantities, even in situations where automated tools may not be applicable.
- **Formula Engine:** Sterling's Formula Engine enables you to apply complex calculations, similar to those in Excel, directly within the take-off process. Whether you're calculating quantities based on specific formulas, adjusting for variables like material waste, or applying unit rates, Sterling's formula engine ensures that your calculations are consistent, accurate, and aligned with your estimating needs.

# Bid Packages

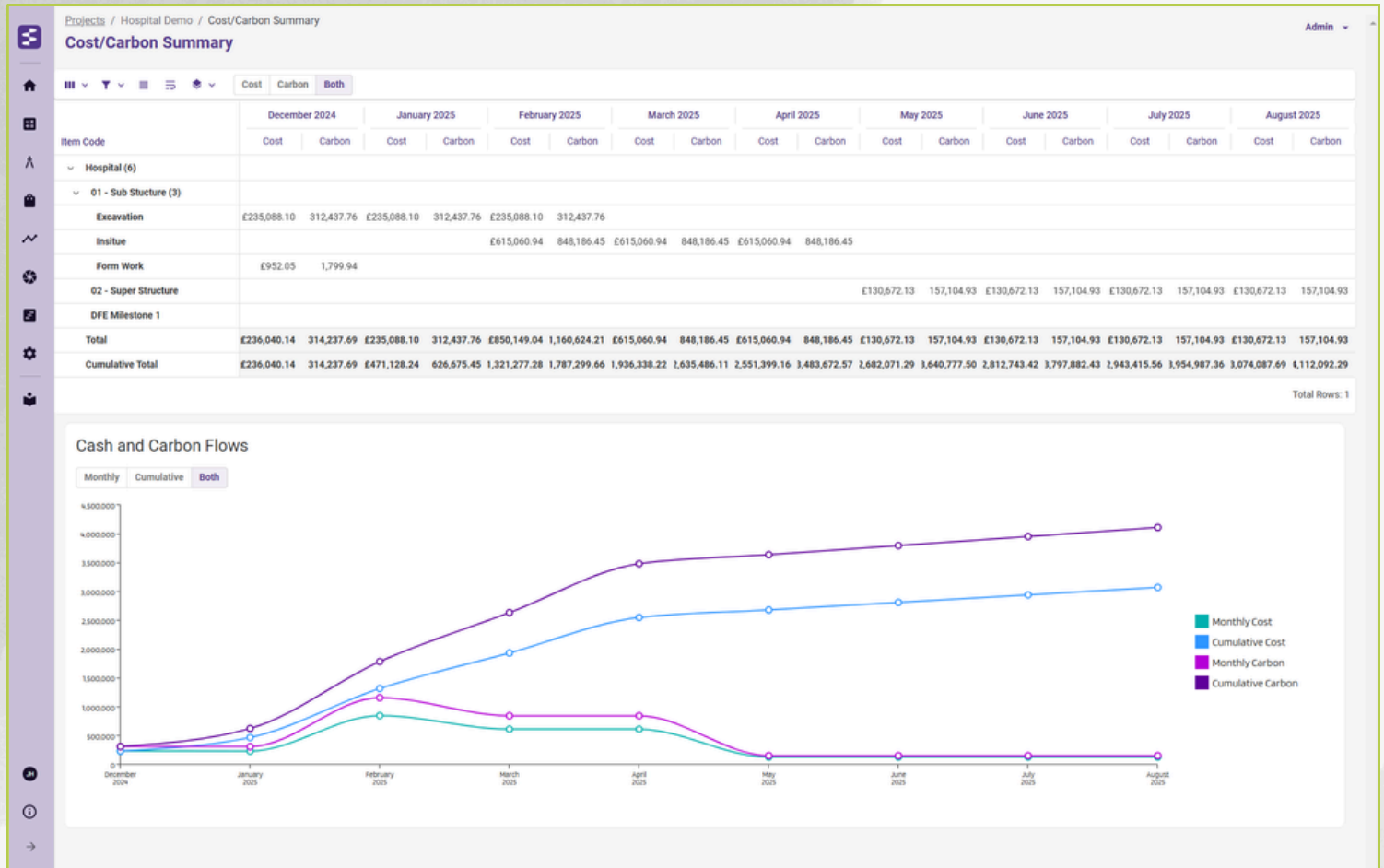
Sterling's Bid Packages module simplifies the bidding process, allowing you to manage spreading rates for below-the-line items and adjust plug rates to compare bids on a like-for-like basis. Set preferred bidders based on project criteria, and create artificial bidders using strategies like lowest, average, or highest rates. This helps ensure consistent, transparent evaluations, giving you full control over bid comparisons and budget management.

Hospital Demo																	
Work Packages (Earthworks - Package)																	
Cost Plan				Artificial Bidder (average)			Paddick construction			gworks							
Title	Quantity	Unit	Rate	Net Total	Total CO2e	Rate	Total	Total CO2e	Rate	Total	Total CO2e	Rate	Total	Total CO2e			
Disposal of excavated material arising from piling	1,229.6	m3	£37.57	£46,197.79	0.00	£47.50	£58,408.18	0.00	£0.00	£0.00	0.00	£50.00	£61,482.29	0.00			
Excavation, commencing level stated on the drawing	164.257	m3	£6,820.95	£1,120,390.78	288,107.94	£1,099.33	£232,004.99	20,543.14	£1,074.00	£235,216.74	20,543.14	£1,054.00	£230,836.94	20,543.14			
Support to faces of excavation is at the discretion of	513.975	m2	£702.69	£361,165.44	889,917.73	£101.67	£52,254.18	11,019.63	£40.00	£20,599.02	11,019.63	£125.00	£64,246.94	11,019.63			
Excavation, commencing level stated on the drawing	144.834	m3	£36.92	£5,306.93	0.00	£43.67	£6,324.35	33,456.61	£41.00	£5,938.19	0.00	£45.00	£6,517.35	0.00			
Support to faces of excavation is at the discretion of	375.33	m2	£124.70	£46,803.70	8,047.08	£129.00	£48,417.60	8,047.08	£0.00	£0.00	8,047.08	£120.00	£45,039.60	8,047.08			
Excavation, commencing level stated on the drawing	70.292	m3	£36.92	£2,735.77	0.00	£39.00	£2,741.40	0.00	£0.00	£0.00	0.00	£38.00	£2,671.10	0.00			
Support to faces of excavation is at the discretion of	250.236	m2	£124.70	£31,204.40	5,365.06	£133.00	£24,930.48	4,018.87	£124.00	£23,243.28	4,018.84	£134.00	£25,118.30	4,018.93			
Package Total				£: £1,614,134.82	CO2e 1,191,437.81		£: £425,080.77	kgCO2e 77,085.33		£: £284,957.22	kgCO2e 43,628.69		£: £435,912.12	kgCO2e 43,628.78		£: £444,805.79	kgCO2e 77,085.30
Below the Line Items / Adjustments																	
contract item									£1,000.00	£1,000.00	0.00						
individual priced item															£1,800.00	£0.00	0.00
Adjustments Subtotal						£: £0.00	kgCO2e 0.00		£: £1,000.00	kgCO2e 0.00		£: £0.00	kgCO2e 0.00		£: £0.00	kgCO2e 0.00	
Revised Package Total				£: £1,614,134.82	CO2e 1,191,437.81		£: £425,080.77	kgCO2e 77,085.33		£: £285,957.22	kgCO2e 43,628.69		£: £435,912.12	kgCO2e 43,628.78		£: £444,805.79	kgCO2e 77,085.30

- Efficient Bid Management:** Create and manage bid packages directly within the platform, eliminating the need for spreadsheets or third-party tools. Sterling ensures that every bid is tracked, and every document is in the right place, allowing you to focus on selecting the best bids for your project.
- Collaboration:** Share bid packages with subcontractors, collect their submissions, and compare bids quickly and easily. Sterling streamlines communication, helping you make decisions faster and ensuring that no details are overlooked.
- Cost & Carbon Alignment:** Include both cost and carbon information in your bid packages, enabling you to assess bids not only by price but also by their environmental impact. This ensures that your project's sustainability goals are met right from the start.

# Forecasting

Sterling's Forecasting module gives you the tools to predict the future performance of your project. By analysing real-time data from cost estimates, work progress, and resource usage, Sterling provides you with accurate predictions for both costs and carbon impact, helping you stay on track and avoid costly surprises.

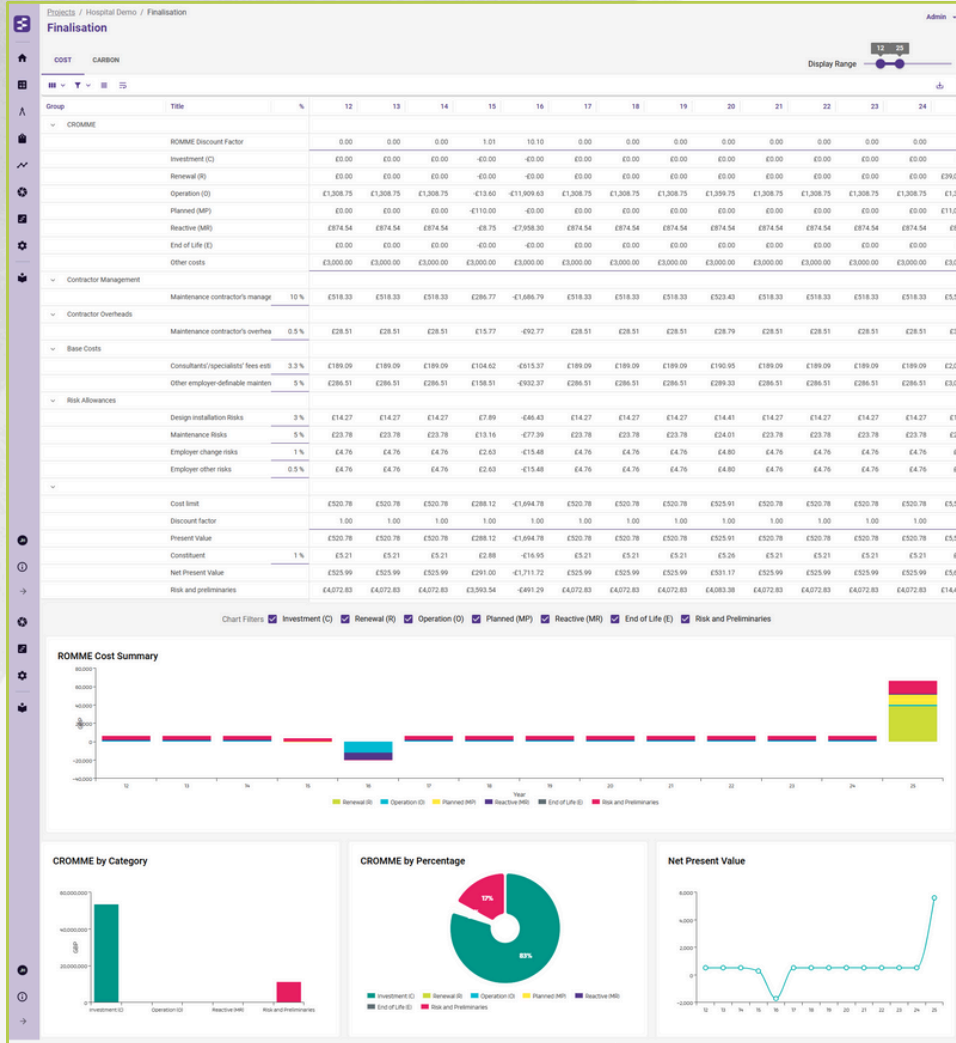


- **Real-Time Forecasting:** Sterling's dynamic forecasting capabilities allow you to predict changes in both cost and carbon over time, helping you manage your budget and sustainability goals effectively.
- **Proactive Risk Management:** With predictive forecasting, you can identify potential issues before they arise. Whether it's a cost overrun or a deviation in carbon performance, Sterling provides early warnings, allowing you to take corrective actions and minimise risks.
- **Comprehensive Reports:** Generate forecasting reports that give you a detailed view of both financial and environmental predictions, helping you make more informed decisions and ensuring that your project stays on target.



# Lifecycle Management

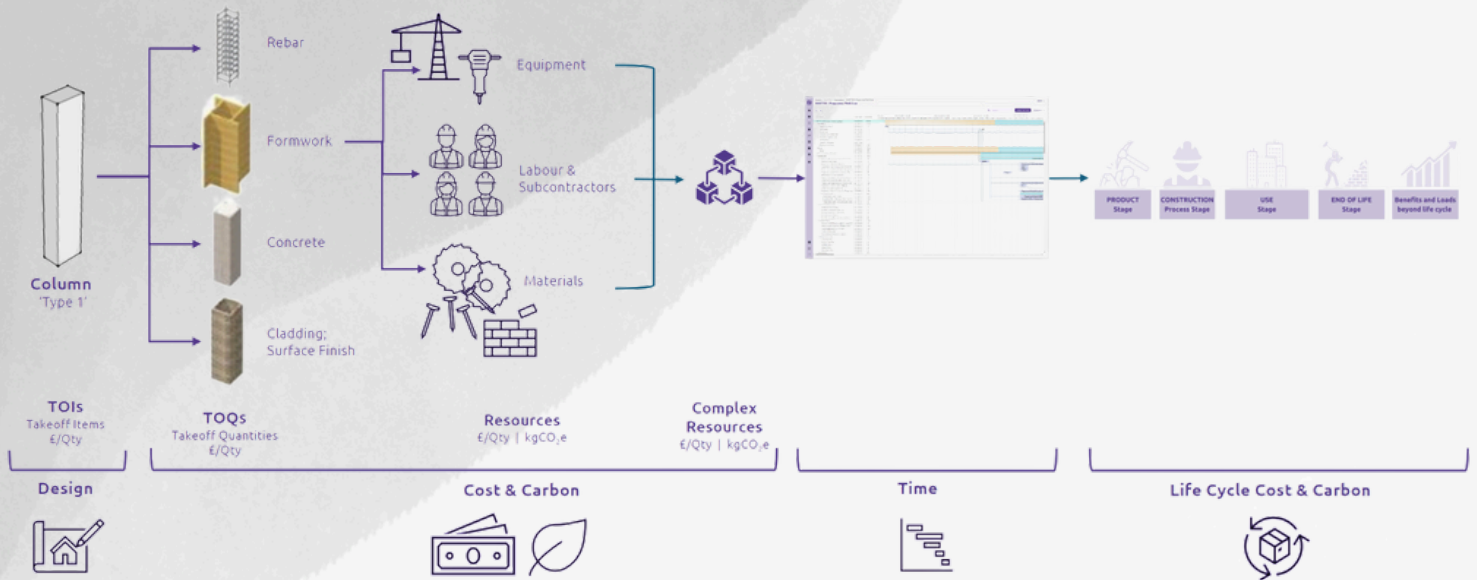
Sterling's Lifecycle Management module provides full visibility over the cost and carbon impact of your project throughout its entire lifecycle—not just during construction, but across Capital, Renewals, Operational, Maintenance, and End of Life phases. This ensures that sustainability is embedded into every stage of the project, supporting your goals to reduce both financial and environmental impacts over the long term.



- **Comprehensive Lifecycle Tracking:** Track and manage both cost and carbon emissions across every phase of your project, **Capital, Renewals, Operational, Maintenance, and End of Life**, ensuring financial and sustainability goals are met at every stage.
- **Aligned with Industry Standards:** Fully compliant with **CROME** (Capital, Renewals, Operational, Maintenance & End of Life) and **RICS NRM3/ICMS** standards, providing you with structured, accurate data that meets recognised frameworks for asset lifecycle management.
- **Seamless Integration & Real-Time Data:** Integrate effortlessly with existing tools, allowing you to monitor, adjust, and report on lifecycle data in real-time, enabling proactive management of costs and carbon emissions throughout the entire asset lifespan.

# How Sterling's Core Modules Work Together

Sterling's platform ensures that your project is fully integrated and aligned across all stages, with each module working in harmony. Whether you're estimating costs and carbon, managing bids, forecasting project performance, or tracking sustainability through the lifecycle, Sterling gives you the tools to manage your project more effectively.



- **Efficiency & Accuracy:** Sterling's integration of estimating, forecasting, and bid management ensures that every aspect of your project is accurately planned and executed, reducing the risk of errors and improving overall efficiency.
- **Sustainability at the Core:** With real-time cost and carbon tracking, Sterling makes it easier to meet your sustainability goals. From estimating through to lifecycle management, every decision you make is informed by accurate, up-to-date environmental data.
- **Optimised Workflow:** Sterling streamlines your entire workflow, from estimating to project delivery, by integrating cost, carbon, forecasting, and bid package management. This optimised approach eliminates silos, reduces manual data entry, and ensures smooth transitions between project phases, enhancing team productivity and reducing project delays.
- **Seamless Collaboration:** With Sterling, your team, contractors, and subcontractors can collaborate seamlessly, ensuring that everyone is aligned and working towards the same goals, with full transparency on costs and carbon.

# A Preconstruction Integrated Ecosystem

Sterling goes beyond being just a standalone platform; it integrates seamlessly with the tools and software that construction professionals already use. Our Preconstruction Integrated Ecosystem brings together a suite of functional integrations designed to streamline workflows, enhance collaboration, and ensure that every aspect of your project is connected.

With Sterling, you no longer have to work across disparate systems. By integrating Sterling's Cost & Carbon Estimating, Bid Packages, Forecasting, and Lifecycle Management with leading industry tools, we ensure that your preconstruction process is smooth, accurate, and efficient from start to finish.

## Connected with...

 **AUTODESK**  
Construction Cloud

 **PROCORE**

 **SharePoint**

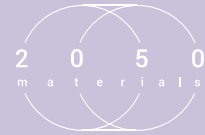
 **Power BI**

 **MS Project**

 **Dropbox**

 **EC3**

 **ORACLE**  
PRIMAVERA P6



and more....

## How It Works

Sterling's Preconstruction Integrated Ecosystem is designed to create a connected, streamlined experience for your team. From initial project estimates through to final lifecycle management, our ecosystem allows for data and processes to flow seamlessly between systems, reducing duplication, errors, and delays.

- **Centralised Data:** All project data – from cost estimates to carbon figures, project plans, and bid packages – is centralised in Sterling, ensuring that your team has access to the latest and most accurate information.
- **Improved Collaboration:** Integration with tools like Autodesk, Procore, and SharePoint ensures that everyone involved in the project is working from the same set of data. This collaboration ensures consistency and improves communication between teams, stakeholders, and external partners.
- **Faster Decision Making:** With access to real-time data and reports through integrations with Power BI and other platforms, decision-makers can act quickly and confidently. Whether adjusting cost estimates or tracking carbon forecasts, all necessary data is immediately accessible, reducing bottlenecks in decision-making.
- **End-to-End Visibility:** Sterling's integrated approach provides full visibility across the entire preconstruction process. By tracking project costs, carbon impact, and progress from a single platform, you can ensure that your project remains on track to meet both financial and sustainability goals.



# Key Benefits of Sterling's Integrated Solution

Sterling's platform offers a wide array of benefits that enhance every phase of your construction project. By bringing together cost management, carbon tracking, forecasting, bid package management, and lifecycle tracking in one cohesive platform, Sterling empowers your team to make more informed decisions, reduce environmental impact, and ensure project success.

## Enhanced Accuracy and Efficiency

Sterling's integrated platform ensures your project is accurately planned and executed. With 2D/3D Take-off, real-time data, and resource-based estimating, Sterling cuts errors, boosts accuracy, and speeds up workflows.

- **Precise Estimating:** Real-time data and detailed resource breakdowns (labour, materials, plant) with carbon impact calculations.
- **Faster Delivery:** Integrated modules streamline bid creation and data entry, accelerating decisions and timelines.

## Sustainability at the Core

Sterling helps you manage cost and carbon from start to finish, ensuring you stay on target to meet your sustainability goals.

- **Real-Time Carbon Tracking:** Track carbon impact at every stage, from estimating to handover.
- **Regulatory Compliance:** Built-in carbon data helps you meet sustainability regulations and net-zero targets.

## Full Lifecycle Management

Sterling's Lifecycle Management module gives you control over cost and carbon from construction through to operating and end-of-life phases, fully aligned with CROME and RICS NRM3/ICMS standards.

- **Comprehensive Lifecycle:** Track costs and carbon through Capital, Renewals, Operational, Maintenance, and End of Life stages.
- **Sustainability Long-Term:** Manage the entire lifecycle, minimising environmental and financial impacts for the long term.



# Ready to Transform Your Construction Projects?

Discover how Sterling's integrated solution can optimise your cost and carbon estimating, forecasting, bid management, and lifecycle tracking. Take the first step towards smarter, more sustainable construction projects today.



See Sterling in action and explore how our platform can streamline your projects.

**Schedule a Demo.**

**Want to learn more?**

**Book a demo today**

[sterling-dcs.com](https://sterling-dcs.com)  
[info@sterling-dcs.com](mailto:info@sterling-dcs.com)

 [sterling-dcs](https://www.linkedin.com/company/sterling-dcs)

 **Sterling**