

# Connecting the dots to turn Net Zero ambitions into a reality

How we're delivering sustainable infrastructure solutions for a better world

Amey

Life's better connected





# | Contents

01	Who we are
02	Amey's approach
04	The energy transition
06	Our journey to Net Zero
07	Where we work
08	Success stories
10	Protecting our world
12	Contact us

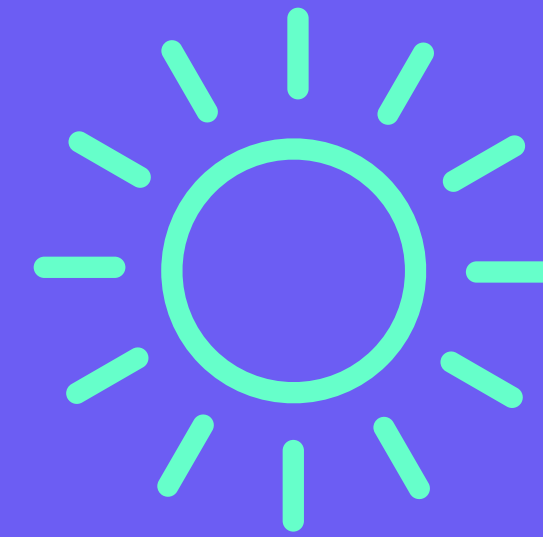


# | Who we are

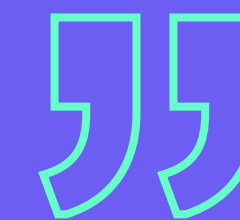
We are a leading provider of engineering, operations and decarbonisation solutions for UK transport infrastructure and complex facilities.

We work in critical sectors to keep people moving and thriving. At Amey, we know that infrastructure is the lifeblood of our country, connecting people and communities and driving economic growth. But rising costs, a changing climate and the energy transition are making this more complex than ever.

Through a combination of innovation, analytical expertise and operational excellence, we are rising to these challenges. Delivering full lifecycle, sustainable infrastructure solutions that work for both people and planet. Working with partners to protect the environment and create a society that benefits all.



In the face of climate change and the energy transition, we're driving decarbonisation and energy efficiency, being nature-positive, and improving the resilience of the nation's infrastructure.





# I Our approach

Achieving Net Zero is the great mission of our age. But with tight budgets, limited resources and differing approaches, getting there will be a challenge.

At Amey, we connect the dots to make your Net Zero ambitions a reality. From planning and design to operation and maintenance, we link together every part of your Net Zero journey. We call it the 'One Amey approach' to sustainability, delivering practical, long-term, end-to-end solutions that are built around your needs. These include nature-based solutions and smarter infrastructure projects, making use of real-time data to deliver practical, on-the-ground solutions.

We create Net Zero strategies that work in the real world, such as unlocking the funding that local authorities need to turn ambition into action. Helping schools and hospitals breathe easier by lowering energy bills with cleaner, smarter power. Driving green travel with EV chargers and carbon-neutral roads that cut both emissions and costs. We're also advancing smart electrification across the UK rail network, increasing sustainability and ensuring cost efficiencies stay on track.

When everything flows seamlessly, Net Zero isn't just a target. It's a reality that benefits people, places and the planet. Because **Life's Better Connected.**





## What drives us

At the heart of everything we do are four common enablers, ensuring that we meet your needs with unmatched value.

### | Strategy & Advisory

Backed by a world-class data analytics capability, we can help you discover unrealised opportunities and key insights to drive a more sustainable future for your business. Our advisory team works as an extension of yours, collaborating and solving challenges at every stage from concept to delivery and beyond.

### | Funding & Finance

Amey has decades of experience in finding and implementing the right, sustainable financial models, from Government funding applications and Public-Private Partnerships to innovative funding structures. Our comprehensive financial planning and advisory services ensure that your project always delivers maximum value and return on investment.

### | Innovative technologies

At Amey, our technical know-how means that we can solve complex challenges faster and drive informed decision-making. Our new TechnologyHub, for example, is an innovative platform that integrates building management systems, enhancing control over energy consumption, maintenance tasks and building operations.

### | Project management

We have 100 years' experience of implementing large-scale transformation projects, delivering schemes that are safe, sustainable and accessible to all. Our vast expertise ensures that projects are delivered on time, within budget and to the highest quality standards – and always optimised for efficiency and value.





# Designing with the planet in mind

As the damaging effects of climate change grow with each day, the need to transition to a sustainable, low-carbon world is more urgent than ever.

Across three mission-led capabilities, we're equipping businesses with the tools, knowledge and strategies required for the energy transition. Creating outcomes that focus on people, communities and a more sustainable future for all.

1

## Sustainable transport solutions

At Amey, we're committed to developing transport systems that are environmentally sustainable and accessible to all members of the community.

On the roads, our teams work closely with operational experts to reduce emissions, cut unnecessary waste, and drive down the environmental impact. In Staffordshire, for example, we've pioneered an innovative approach that recovers and recycles aggregate materials from highway maintenance, saving both money and carbon.

While in Scotland, we're working with North Lanarkshire Council to establish a Centre of Excellence for Decarbonising Roads. This £4.5 million project aims to identify and implement low-carbon solutions for the local highway network, reducing emissions and promoting sustainable transport infrastructure.

On the rail network, our experts are designing and implementing smarter, greener ways to improve for all. These include planting over 170,000 native woodland trees for HS2 and pioneering electrification across the country.

In fact, we've recently upgraded both the TransPennine Route and Core Valleys Lines in South Wales with sustainable electrical power. Together with delivering clean, reliable transport, these projects have saved hundreds of millions of pounds and thousands of tonnes of carbon emissions.





# Designing with the planet in mind

2

## Buildings designed for Net Zero

Through innovative design, optimal energy management, and eco-friendly construction methods, Amey is dedicated to enhancing the sustainability of the nation's buildings.

Working with MRI Software, we've launched Technology Hub, an integrated platform that brings estate management into the digital age. This pioneering platform enables clients to monitor and control various building parameters, from desk occupancy to air quality to room temperature. This not only fosters a healthier environment, it leads to improved energy management and a reduced environmental impact.

We're also actively engaged in enhancing sustainability through fabric improvements and retrofit initiatives. In a housing pilot project in Catterick, military homes are undergoing energy-efficient upgrades, from heat pumps to external wall renderings. The initiative aims to achieve over 92% Net Zero Carbon In Use Energy Performance.

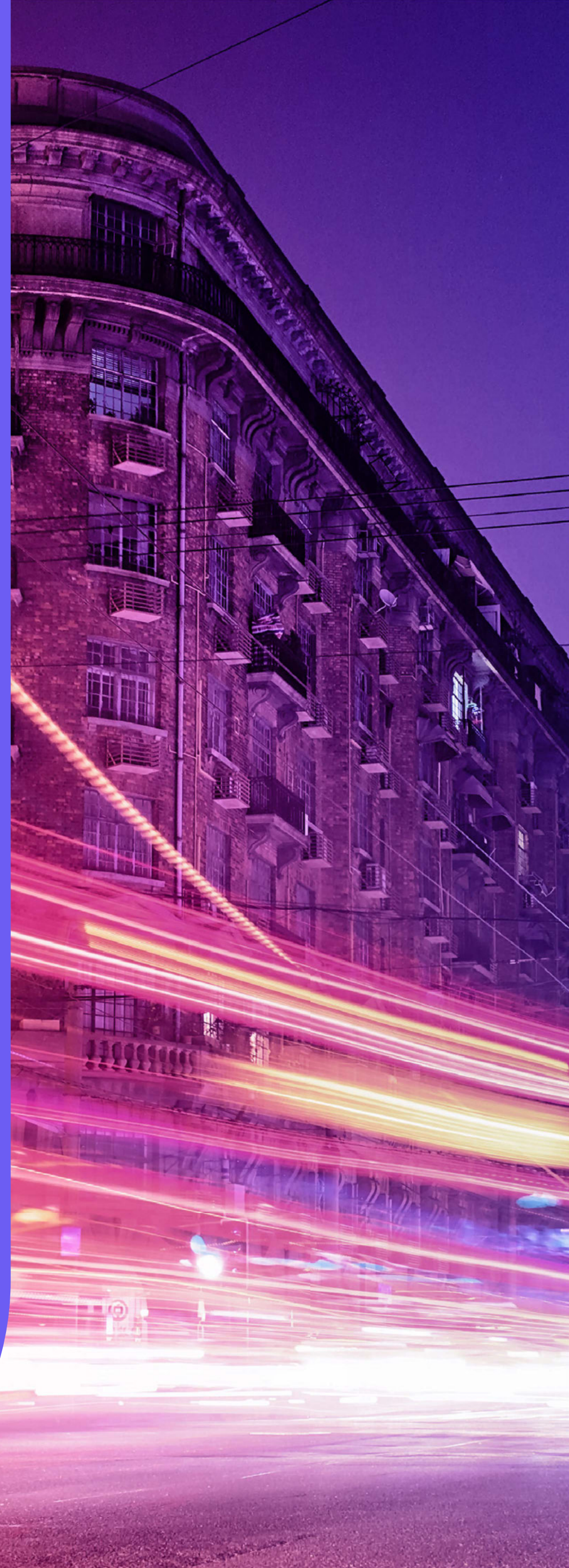
3

## Fostering resilient communities

Our goal is to help people and communities live resiliently in the face of a changing climate. We do this by adopting strategies that encompass climate risk assessment, infrastructure adaption, biodiversity net gain, and nature-positive solutions.

This means being proactive, using data-driven asset management systems to assess maintenance needs, optimise resources, and enhance buildings' resilience against climate change. For example, our in-house Bridge Management System uses machine-learning to predict the effects of adverse weather on bridge structures. This results in preventive maintenance that aims to ensure structural integrity.

We're also committed to leaving biodiversity in a better state than it was before. By prioritising Biodiversity Net Gain in all of our projects, our aim is to create resilient, sustainable environments that balance development with ecological preservation.





# Empowering the journey to Net Zero

At Amey, we work with clients, communities and industry partners to tackle the climate emergency, ensuring effective and sustainable decarbonisation strategies.

Our teams of experts focus closely on areas such as energy assessment, carbon footprint analysis, and the exploration of renewable energy opportunities. In this way, we can tailor solutions to the unique challenges that each client faces.

## Energy assessments

At Amey, we conduct rigorous energy assessments for each of our clients. This evaluates current energy usage and identifies areas for improvement across the entire estate. From this analysis, we can gain a clear understanding of an organisation's carbon footprint, forming the foundation for targeted reduction strategies.

## Modelling decarbonisation plans

Our approach means that clients can visualise the impact of potential interventions so they can make informed choices. Through advanced data strategies, we generate actionable insights to drive decision-making and integrate decarbonisation plans. By employing whole-life carbon assessments aligned with PAS 2080 standards, we can model various scenarios to forecast outcomes and inform strategic planning.

## Identifying energy efficiencies

At Amey, we specialise in pinpointing opportunities to enhance energy efficiency within existing operations. Our key strategies include retrofitting and upgrading buildings to improve energy performance, and implementing renewable energy systems. In developing carbon-neutral facilities for the Ministry of Defence, for example, we've demonstrated how they can deliver sustainable, energy-efficient solutions.

## Exploring renewable energy sources

Our goal is to enable our clients to reduce their reliance on fossil fuels, and adopt the use of clean energy alternatives. To this end, we assist clients in integrating renewable energy sources into their operations. This includes assessing the feasibility of on-site renewable installations, and advising on the procurement of green energy systems.

## Making buildings greener

At the heart of many clients' decarbonisation plans is the need to change the fabric of their buildings. At Amey, our expert teams implement measures such as enhanced insulation, advanced glazing solutions, and the adoption of low-carbon heating systems like heat pumps. These key interventions are designed to reduce energy consumption, as well as transition buildings into sustainable, low-carbon assets.

## Carbon offsetting and insetting

As part of a client's sustainability strategy, our experts advise on whether an operation may require carbon offsetting or insetting. We provide key guidance in identifying credible offsetting projects, such as reforestation or renewable energy initiatives, to make up for any residual emissions. By taking this holistic approach, we ensure that all avenues are explored on the journey to Net Zero.

## Case study

# How AI can save you energy



We've partnered with Grid Edge to help our clients accelerate their Net Zero journey. Together, we've developed E60+, a pioneering energy solution that makes real-time changes to properties in response to how they're being used.

This innovative management system gathers data from across a building's footprint. These details are integrated with AI to create a detailed, real-time picture of how the building is operating, from its airflow to its temperature to its occupancy levels. The system then identifies trends, anomalies and inefficiencies that can be turned into actionable recommendations.

The results so far are extremely promising. Many clients have reported a 20–40% optimisation of carbon and costs from their energy use over a 12-month period.

75%

Amey has converted thousands of streetlights to LED, saving up to 75% of energy use and costs compared to high-intensity discharge lamps.

11,000

We've used 11,000 metric tonnes of recycled materials in Liverpool's £14 million Lime Street high improvement scheme.



# Where we work

From partnering with NHS trusts, to overseeing key public buildings, to managing over 30,000km of highways, Amey is delivering sustainable infrastructure solutions across every aspect of life in the UK today.

Combining our cross-sector experience, practical engineering expertise and advanced data skills, we help our customers find long-term, cost-effective solutions to the decarbonisation challenges they face.

We bring together in-house consultants and expert contractors to deliver game-changing results across a wide range of sectors.



## Roads

Roads are critical to the health of our economy, communities and environment. We consult, design and maintain assets on thousands of kilometres of highways in the UK, helping to decarbonise infrastructure and plan for the future of our road network.

Our approach has saved National Highways £68m on a strategic roads project using our data-led, optimised working windows solution. Plus, we've played a key role in creating the UK's first carbon-neutral road improvement project, cutting emissions by 43%.



## Rail

Amey offers true, multi-disciplinary rail expertise that covers track systems, signalling, power, electrification and associated civil engineering works. Our design and expertise are at the heart of delivering a modern, £6bn rail network for the UK.

In Wales, we've saved tens of millions of pounds in civil works by developing a unique electrification solution for the 170km Core Valley Lines. While our data tool, Quartz, has reduced delays by 40% and saved £3.5m a year across Network Rail's South East line.



## Public sector

We're building on long, trusted relationships across government to deliver critical infrastructure projects in every part of the UK. Working as one team to develop smarter, more sustainable solutions that deliver value for money for the tax-payer.

Our collaborative approach has helped improve energy performance across 4 million square miles of public buildings. What's more, our innovative green street lighting systems have reduced energy use by 75% compared to high-intensity discharge lamps.



## Defence

From housing to vehicles to equipment, we're proud to help keep the UK's military assets running smoothly and safely. Through our digital technology and innovative, sustainable solutions, our goal is to promote longevity while reducing emissions.

To date, we've managed and refurbished around 15,000 properties and key strategic defence buildings. Our expert team is also maintaining the Ministry of Defence's fleet of over 3,500 construction and materials handling equipment.



## Health

Every day, we partner with NHS trusts across the UK to deliver a more efficient and sustainable health service. Managing, maintaining and modernising facilities so that services run smoothly, with minimal disruption to patients and staff.

Our expert team manages 21 sites for Birmingham and Solihull's Mental Health NHS Foundation Trust, supporting 1.2 million people. We're also decarbonising the NHS's transport infrastructure through initiatives such as micro-mobility and electric vehicles.



## Education

By working with local authorities to maintain and improve their education services, we're helping to transform schools and colleges into smarter, greener, safer places. Making budgets go further and helping to achieve ambitious carbon targets.

In Glasgow, we've designed and delivered classrooms for an extra 300 pupils on existing sites, using a modular turnkey construction method. Our innovative thinking has also led to a 60% reduction in energy costs, through new, adaptive, Smart LED lighting systems.



## Justice

Across the UK, we look after high-profile sites such as courthouses, prisons and secure premises, providing key services that support our justice system. We also design and deliver programmes that provide offenders with valuable skills and training.

During the first COVID lockdown, we delivered 400 temporary cells within a three-week timescale. More recently, our experts teams have helped reduce energy use in 60 sites across England and Wales on behalf of the prison service.



## Success stories



### Working towards Scotland's first Net Zero depot

Transport Scotland is aiming to achieve Net Zero by 2045. Central to this goal is the decarbonisation of the Polmadie depot, one of its main sites in Glasgow.

Working in close partnership with Transport Scotland, Amey has developed a strategy which outlines a wide range of energy efficiency measures across the site. Solar photovoltaic panels on the roof. Renewable energy generation. Heat decarbonisation. Improvements to the building fabric, such as green walls.

Once implemented, carbon emissions at the Polmadie depot are projected to fall 100 tonnes a year. With an aim of completing all project works by 2032, carbon emissions are expected to be reduced by 90%, with a clear strategy to achieve the goal of Net Zero.



### Winning in the energy transition

Working alongside Government agencies in 64 prisons across the UK, Amey is a key partner in helping the prison estate reach its Net Zero target by 2035.

At HMP Prescoed, an ageing category D prison in South Wales, our goal was to reduce gas and electricity demand while improving sustainability. Our expert team replaced the existing heating system with two different thermal array systems, to see which would prove to be the most energy-efficient and cost-effective.

The selected solution reduced energy use by 100,000kWh annually. It also removed 20 tonnes of carbon per year, reducing the prison's reliance on fossil fuels.



### The UK's first carbon-neutral road

We're proud to be part of the UK's first carbon-neutral road improvement project: an £8 million National Highways carriage reconstruction in Cumbria.

Working closely with specialist contractors, Amey Consulting designed the carriageway and resurfacing. Carbon savings were made by reducing energy and materials, together with the use of recycled materials in the asphalt. The use of solar-powered generators and electric vehicles further contributed to the project's sustainability.

Overall, the project achieve a staggering 43% reduction in carbon emissions compared to traditional reconstruction methods, saving 230 tonnes of CO<sub>2</sub> emissions.



## Success stories



### Sustainable lighting in Scottish schools

Working with the local council, Amey implemented a lighting system across 11 Public-Private Partnership schools in Dumfries and Galloway and the Scottish Borders.

Our experts designed and installed a smart LED system that uses advanced technology to optimise lighting based on natural light levels and how many people are occupying the building at any given time. This innovative, sustainable approach achieved energy savings of up to 60% across all of the schools.

Not only has the initiative reduced CO<sub>2</sub> emissions by approximately 700 tonnes annually, it has enhanced the learning environment by improving the quality of lighting.



### Securing funding for decarbonisation

Amey has helped Barnsley Council secure a vital £1.3 million from the Government's Public Sector Decarbonisation Scheme.

Working in partnership with Barnsley Council, we reviewed energy metering systems and building controls across 11 schools. Our experts then provided options to reduce consumption, improve management of the heating, ventilation and air conditioning, and drive efficiencies and cost savings across the existing systems.

As a result, new hardware and an improved metering system have been installed, enhancing the council's ability to identify energy efficiencies.



### Improving biodiversity in Cumbria

At Amey, we're committed to finding innovative, sustainable ways to protect and nourish the environment we all share.

Working in partnership with Highways England, our environmental experts fed into Cumbria Wildlife Trust's 'Get Cumbria Buzzing' project. This aims to create 115 hectares of wildflower-rich habitats across Cumbria to help boost pollinators such as bees which are in serious decline across the UK.

Through analysis and site surveys, our team identified areas with the most potential for improvement, developing individual habitat management plans for each plot.



# Protecting our world

At Amey, we believe we can protect the environment, deliver sustainable change, and help create a society where everyone has the opportunity to thrive. To achieve this, we're making sustainability a fundamental part of every level of our operations, with three clear goals established for the future.

First, we want to accelerate the change to a resilient, low-carbon future. Second, our aim is to enhance the wellbeing of the people and communities we impact every day. Third, our mission is to achieve growth that's both sustainable and responsible.



## Caring for our environment

In the face of the changing emergency, we're taking action on many fronts. Upgrading infrastructure so that it optimises energy use. Protecting biodiversity and encouraging nature to thrive where we work. Using innovative, digital solutions to predict the impact of climate change so we can take action to prevent it.



## Caring for our communities

At Amey, we're committed to improving the wellbeing of our staff and the communities who are impacted by our work. Not only do we provide a safe, inclusive and progressive workplace where people can thrive, we work closely with local communities to design and implement infrastructure that creates a positive, long-lasting impact.



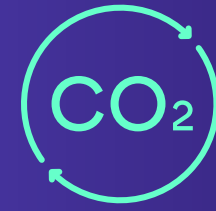
## Caring about our values

At Amey, we uphold the highest standards of governance at all times, and we're proud to be a leading example of an ethical business. At every level of our organisation, we run our business responsibly, fairly and transparently, always considering our impact on the environment around us and the community we serve.





# Our environmental credentials



## Carbon management

Amey is proud to have achieved the PAS 2080:2023 certification from the British Standards Institution (BSI) for its comprehensive Carbon Management Process. This important certification highlights Amey's commitment to reducing carbon emissions, and promoting sustainable practices across all of our infrastructure projects.



## Community employment and skills

Amey is dedicated to boosting employment and promoting skills development in local communities. We offer apprenticeship opportunities in areas such as Rail Design and Civil Engineering, aiming to build a vibrant community of skilled professionals. Plus, our Journey to Work events provide career guidance and open up pathways to employment.



## Net Zero commitment

Amey is actively working towards achieving Net Zero by 2040. Together with measures such as tracking total emissions and adopting electric vehicles, we're collaborating with suppliers to reduce carbon across the value chain.





Contact our team  
for more information

David.aird@amey.co.uk

Anna.stoll@amey.co.uk

Amey

Life's better connected