



# CAR MONITOR

Monitoring & Emission Management

On the market starting **from 2020**  
Operating in Baltics  
**Tested & proven** to work around the globe

CarMonitor is developed **from the ground up**  
by VOZOROM LTD in cooperation with  
Vidzeme University of Applied Science  
and has been **supported by several EU**  
**innovation grants** during the development period

24/7 on the watch  
to help businesses  
and governments monitor  
their transport units,  
reduce transport-related costs,  
keep drivers safe,  
and keep vehicles maintained



Co-funded by  
the European Union



Investment and  
Development  
Agency of Latvia

## Industries like

**Public transportation**

**Delivery**

**Insurance**

**Construction**

**Agriculture**

**Forestry**

**Logistics**

**Courier & Post services**

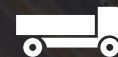
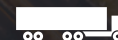
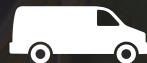
**Taxi**

trust CarMonitor their  
transport assets  
and are happy about it



# CarMonitor works\* with nearly **everything** that has wheels

\* if it doesn't yet,  
but You need it to,  
please contact us,  
we will find a way





**1**

**CarMonitor device  
is installed  
in transport unit**

No special knowledge  
required, no special  
trained staff needed

**>5 minute  
installation**

**2**

**Transport-related  
data is being  
transmitted to  
the server**

Automatically over cellular network

**Servers are  
located in EU**

# How it **works?**

**3**

**Data is being  
processed and  
analyzed in the  
background**

Without any actions From Your side

**All the magic  
happens here**

**4**

**All the data is  
available to You via  
online access 24/7**

Online, history, reports, analytics  
and everything else

**Data driven  
decisions starts  
here**



# CarMonitor device types

In CarMonitor we use only new generation, 4G\* enabled devices

## Advanced\* devices

**MAX data available**  
**Seamless installation**  
**No attention required**  
**CAN BUS data reading**  
**Internal battery**

**\*works with most  
transport units**

Available data - everything in Simple devices +  
RPM; Fuel level & consumption; engine load;  
DTC; EGR; coolant liquid temp; hydraulics;  
ECO driving

## Simple\* devices

**Main data available**  
**Seamless installation**  
**No attention required**  
**Internal battery**

**\*works with all  
transport units**

Available data - ignition status; routes; speed;  
location; power source voltage; engine hours;  
driver behavior; aggressive driving; impact  
detection; vehicle status; altitude

\*2G and 3G fallback compatible, ensuring maximum possible network coverage worldwide



# Why network type matters?

Transport units should be **monitored 24/7** regardless of their location

Network type differs depending on the location of vehicle

**CarMonitor works** with any kind of network - **2G, 3G, 4G and soon 5G**

This allows users to be sure, that they will **receive transport related data anytime, anywhere**, if there is available at least some network coverage

In places where there is no network coverage CarMonitor devices **store data in internal memory and transfer data to the servers** as soon as the network is available



# Global coverage

# fixed price

CarMonitor uses SIM  
cards, that **work worldwide\***  
we've got You covered where  
ever Your transport is

\*currently is not supported in Russia and Belarus, limited coverage in Ukraine

# Servers located in EU certified data center

ISO 27001:2013 (ISO 27001)

ISO 9001:2015 (ISO 9001)

ISO 14001:2015 (ISO 14001)

On request servers  
can be located in  
**any other country**  
providing  
fast access  
and **data compliance**



# CarMonitor can be used for

Online transport monitoring

Transport usage history analysis

Data driven analytics

Reports & Insights of transport usage

Notifications on transport-related issues & events

CO2 emission calculation, management & reporting

Insurance telematics

Driver behavior analysis & correction

Compliance policy monitoring

Proof of action taken place

Transport related issues investigation

Tax & cost reduction

# Online view

Precise location

Current speed

Distance travelled

Status

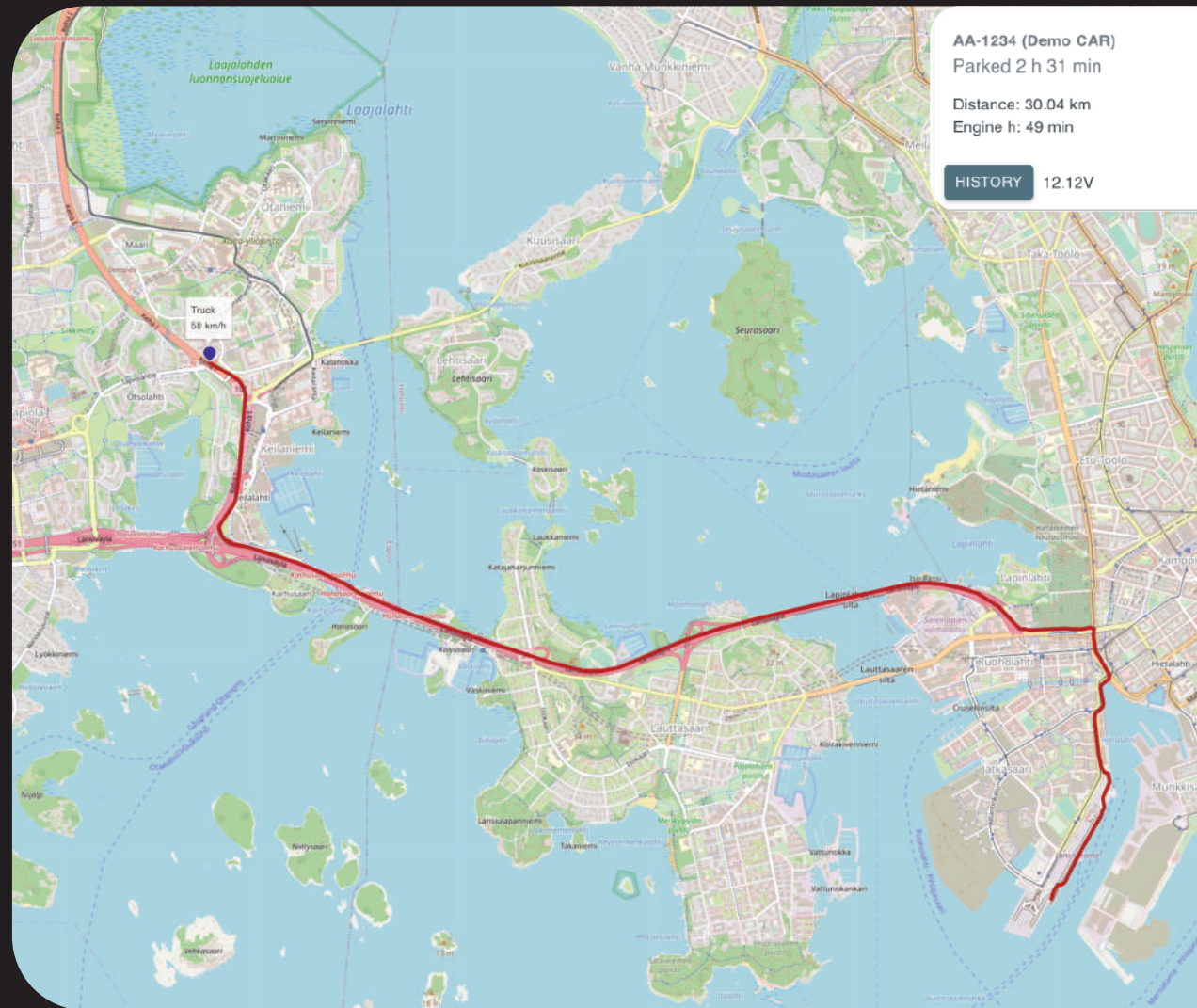
Engine hours

Current voltage

Option to view all  
transport units

Simple & clean  
interface

All the features  
available in just  
a few clicks



All over the world map



# History view

Any period of time

Precise routes

Speed data at any point

All the stops

Distance between stops

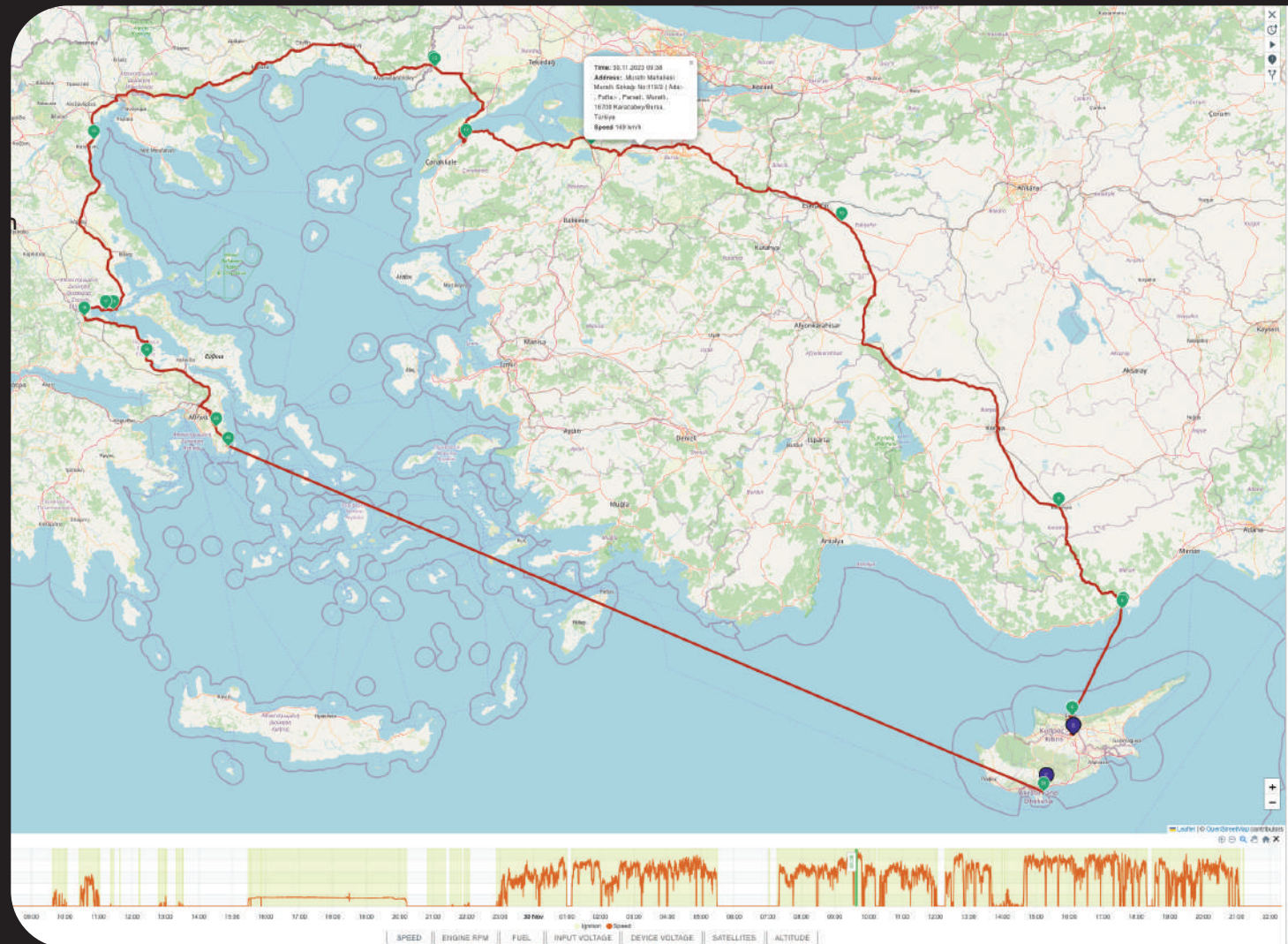
Driving statistics

Data charts:

Speed/ignition  
Engine RPM  
Fuel  
Input voltage  
Device voltage  
Satellites  
Altitude

Route playback

Driving events



# Speed data & charts

Will help You to  
identify all the  
speed violations  
and analyze  
them accordingly  
to Your company  
policies

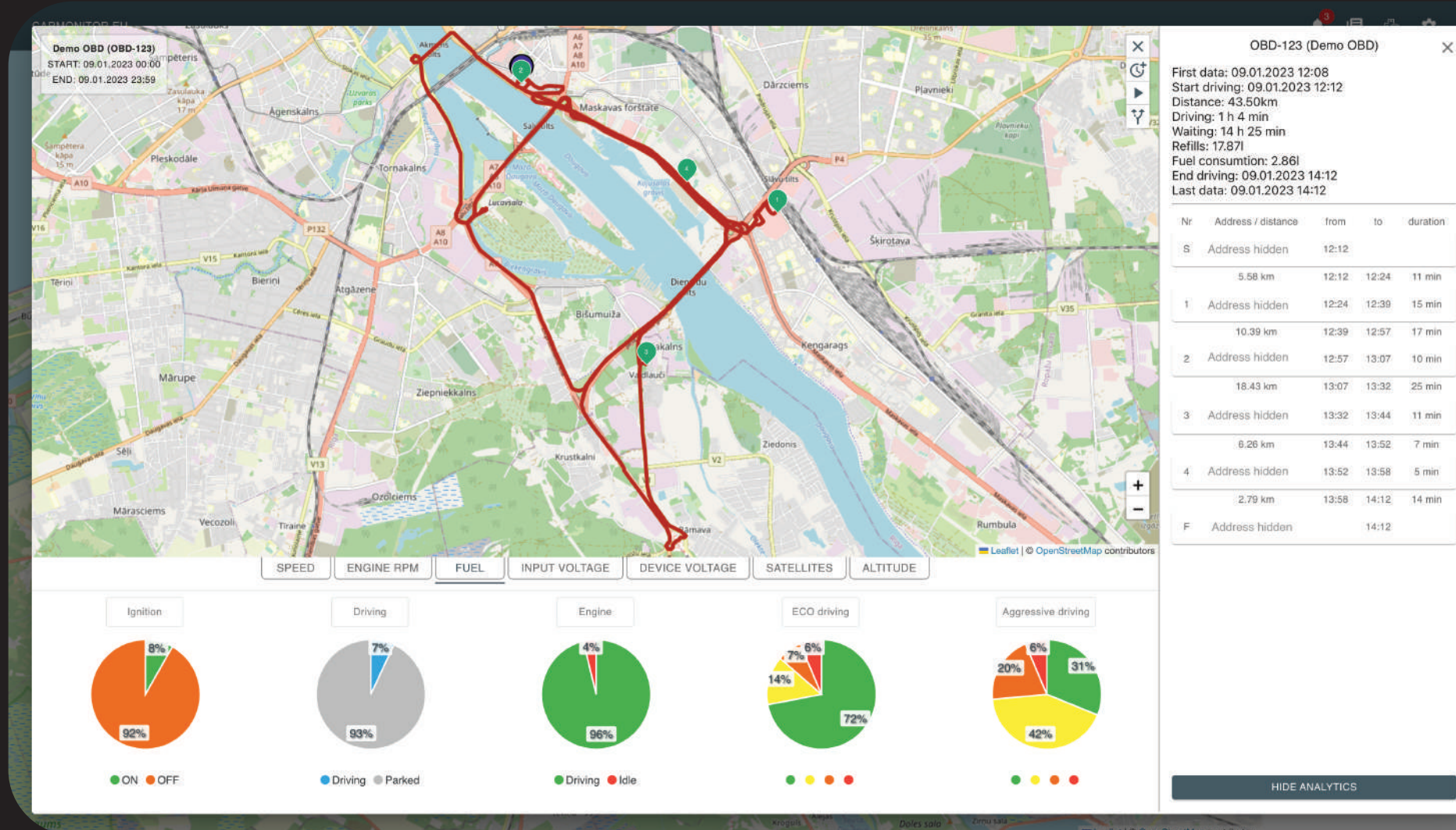
# Driving events

Will help You to  
identify all the  
driving events  
and analyze  
them accordingly  
to Your company  
policies





# Analytics view

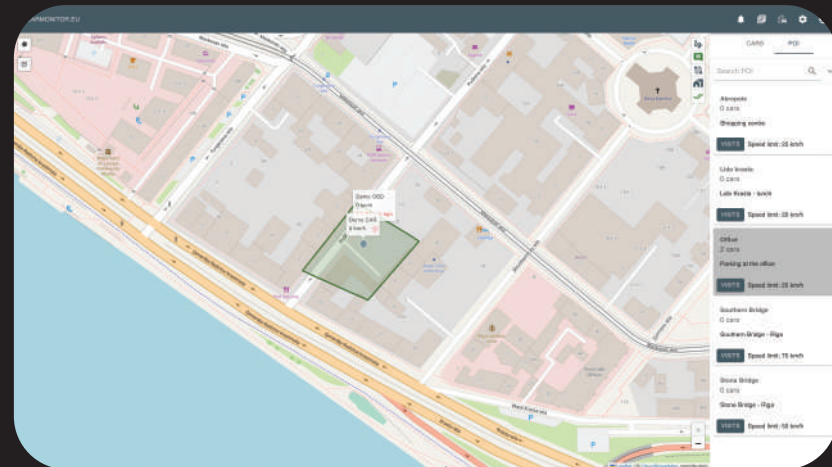
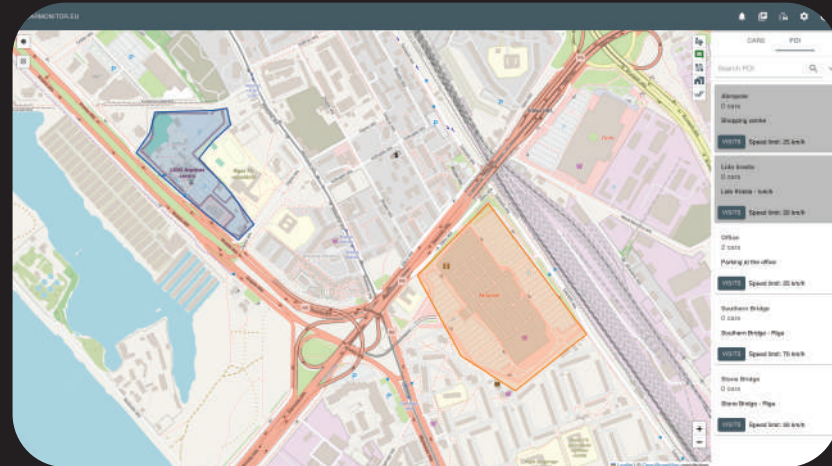


All the key data at Your fingertips just in few clicks

# Point Of Interest view

You can define any place on a map as POI and be aware of every movement of the transport unit in the defined area:

driving in  
driving out  
staying in for too long  
staying with no transport units  
too many transports inside  
restricted access  
leaving without permission  
overspeeding  
etc.





# Driver behaviour

You will be able to automatically identify all the driver behavior deviations, such as:

- harsh acceleration
- harsh braking
- harsh cornering

And act accordingly to correct the behavior of the drivers

Driver behavior correction also helps to reduce transport-related costs in the long run



**Improvement in driver behavior reduces the risks of accidents!**

1

## Route report

Automatically creates a report, that shows all the routes during the chosen period of time - stops, distances, travel time, location, addresses, and everything else.

**Available for  
any period of  
time**

2

## Driver score & ECO driving

Indicates all driving events - aggressive acceleration, aggressive braking, aggressive cornering. Also calculates driver score & ECO driving score.

**Improve driver  
behavior**

# Reports

3

## POI

Automatically shows transport entered or left the POI, calculates time in the POI and out of the POI, plus calculates the number of transport units in the POI

**Take control  
over locations**

4

## CO2 emissions

Automatically calculates CO2 emissions produced via transport unit during any period of time, and allows You to submit data to ESG or any other report with few clicks

**Precise data for  
ESG reports**



# Notifications

Automatic real time online notifications are available\* For the following events:

- speed violations
- crash/impact detection
- ignition status
- aggressive driving events
- schedule interruptions
- route deviation
- Fuel changes
- tracking device disconnected
- lost connection with the transport
- internal battery status
- insurance renewal
- roadworthiness test period
- maintenance schedule
- POI status
- unauthorized usage of transport

12

\*If You need some special transport-related notifications CarMonitor can deliver them

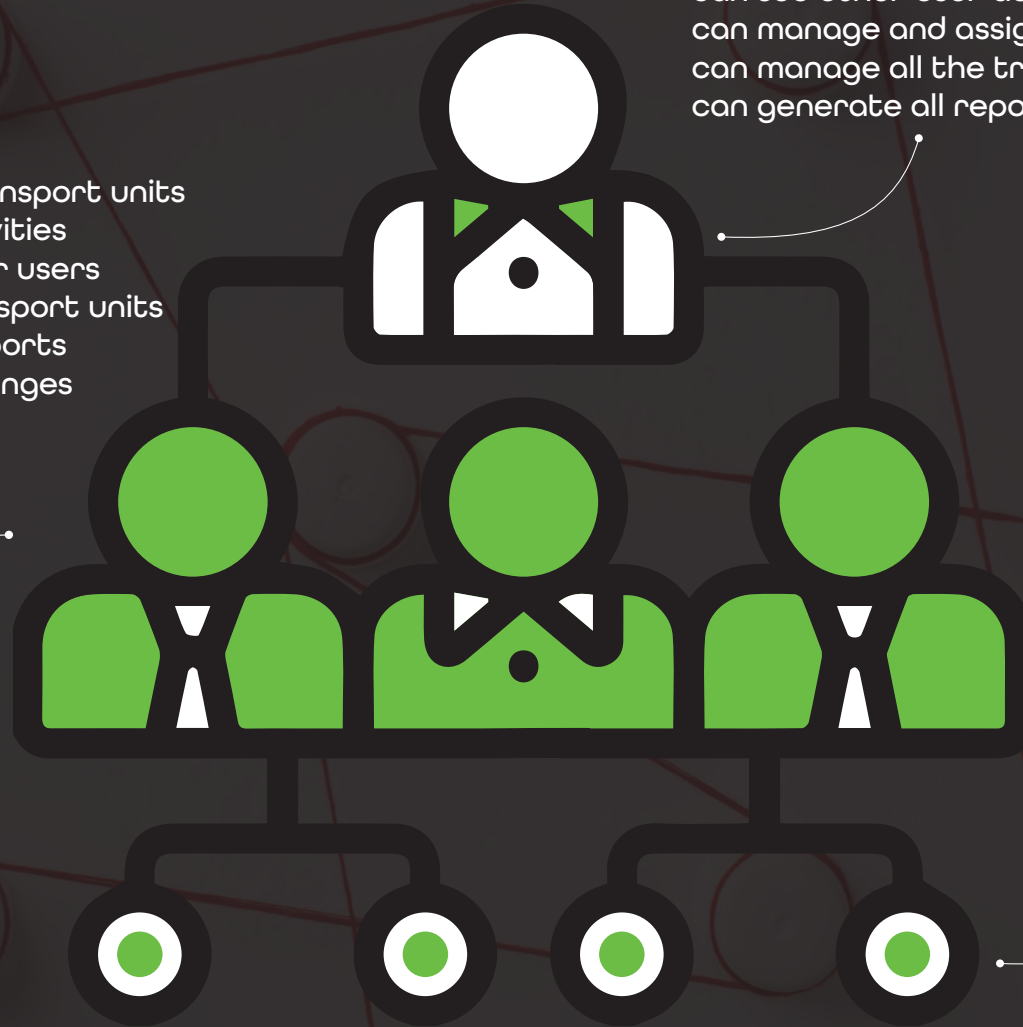
# CarMonitor user hierarchy

## Company admin

has access to all transport units  
can see other user activities  
can manage and assign roles to other users  
can manage all the transport units  
can generate all reports

## Company users

has access to allowed transport units  
can't see other user activities  
can't assign roles to other users  
can manage allowed transport units  
can generate allowed reports  
can't make any major changes



## Company limited users

have view only rights  
can't make any changes  
can't make any reports

In case special user types are needed that can be implemented in CarMonitor



# Data security & privacy is a core of CarMonitor

## confirmed by independent university safety tests

2FA enabled  
security protocols implemented  
data backup and encryption



**CO2 emission  
management  
with  
CarMonitor**



# CarMonitor can offer a **full cycle** of transport related **emission** calculation and **management**

**Automatic transport  
emission calculation**

**Identification of  
possible emission  
reduction areas**

**Transport related emission  
report generation**

Emissions can be calculated in 3 ways:

1. CarMonitor sensors & CarMonitor emissions calculation software
2. Third party data & CarMonitor emissions calculation software
3. User entered data for emission calculation with CarMonitor emissions calculation software

# Transport related emissions calculation with CarMonitor sensors & CarMonitor emissions calculation software

## Implementing the sensors

every transport unit has to be equipped with CarMonitor tracking devices to collect data, which is necessary for emissions calculation

## Data collection and analysis

tracking device transmits data to the CarMonitor server, where it is being stored and analyzed to identify areas for possible CO2 emission reduction and prepared for transport related emission reports

## Transport related CO2 emission reduction

after data analysis CarMonitor automatically identifies areas for possible emission reduction and suggests necessary action plan to achieve the results

## Transport related CO2 emission reports

after data analysis CarMonitor automatically prepares all the necessary transport related CO2 emission reports that can be included in ESG reports



# Transport related emission calculation with third party data & CarMonitor emission calculation software

## Setting up the data exchange

Third party has to provide necessary data\* exchange with CarMonitor servers, this will allow CarMonitor to make all the emission calculations

\*data is stored at CarMonitor servers only during processing and is deleted immediately after

## Data processing and analysis

after receiving data from third party to CarMonitor server, it is being processed and analyzed\* to identify areas for possible CO2 emission reduction and prepared for transport related emission reports

\*quality of analysis depends on incoming data from the third party, CarMonitor is not responsible for any inaccuracy

## Transport related CO2 emission reduction

after data analysis CarMonitor automatically identifies areas for possible emission reduction and suggests necessary action plan to achieve the results

## Transport related CO2 emission reports

after data analysis CarMonitor automatically prepares all the necessary transport related CO2 emission reports that can be included in ESG reports

# Transport related emission calculation with user entered data & CarMonitor emission calculation software

## User enters or imports data

Necessary data\* has been entered or imported accordingly to instruction

\*data is stored at CarMonitor servers only during processing and is deleted immediately after

## Data processing and analysis

after receiving data at the CarMonitor server it is being processed and prepared for transport related emission reports

## Transport related CO2 emission reports

after data processing transport related CO2 emission report is being prepared based on user entered or imported data



# Cooperation models



## Distribution

All the CarMonitor Features  
& Functions under

Exclusive rights Territory

MOQ 200 pcs

Support and training

Special prices for the devices

## White label / Private label

All the CarMonitor Features & Functions under  
Your company brand

Exclusive rights in Region, Territory or Country

MOQ & minimum active tracker count conditions

VIP support and training

Special prices for the devices

## Partnership

All the CarMonitor Features  
& Functions For Your company

You can use CarMonitor  
only For Your company

No MOQ

Support and training



**Feel free to contact us  
and let's do business  
together**

**www.carmonitor.eu  
info@carmonitor.eu  
+371 277 83 996  
Vadims Morozovs  
CEO**