

DEFENCE AND SPACE
Intelligence

Radar Constellation

Radar Satellite Services
Provide Unique Precision,
Quality and Reliability



AIRBUS

Precision – Reliability – Revisit

All the advantages of Synthetic Aperture Radar remote sensing provided by one unique constellation:

Highly accurate and reliable Earth observation in near-real-time – independent of weather and daylight conditions.

Our Radar "Toolbox" – Made for Results

Airbus Defence and Space and Hisdesat's unique Synthetic Aperture Radar (SAR) satellite constellation is geared to serve user's needs. Its accurate measurement, extraordinary acquisition success and high reactivity makes the Radar Constellation the first choice for users seeking the "go-to" solution for innovative business solutions and crisis management.

The Radar Constellation consists of the commercially available radar sensors TerraSAR-X/TanDEM-X and PAZ which operate in the same orbital tube and feature identical ground swaths & imaging modes in order to max out the versatile advantages of this precise technology.

Using spaceborne SAR we can provide accurate measurements, unmatched


geometric accuracy and provide highly precise information of any point on Earth. Our imagery is ranging from very high resolution to wide-area coverage.


The satellites' proven data quality and resolution of up to 25cm continues to be among the very best in the spaceborne commercial radar market. The constellation's capacity empowers both data-hungry services and time-critical missions, enabling a broad array of applications, e.g.

- Interferometric (InSAR) analysis (e.g. oil & gas fields, civil engineering structures)
- Detection and identification of objects and their changes (e.g. for image intelligence applications – IMINT, GEOINT)
- Monitoring of objects and their movement (maritime and on-shore)

Benefits


- 6 Imaging Modes
- Resolution from 25cm to 40m
- Wide Area Monitoring
- 4 / 7 Day Interferometric Revisit Cycle
- Up to 12hrs Revisit Time (depending on location)
- Highest Geolocation Accuracy (<1m)
- High Reactivity
- Capacity suits data-hungry missions
- Capability to detect changes, measure surface motion and heights
- Source for Ground Control Points
- Weather- and Daylight-independent

 Weather and Daylight independent

 Global coverage

 Constellation Capacity

 Reliable and fast Delivery

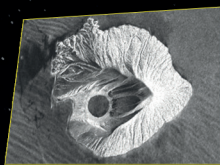
 Short Revisit Rate & Repeat-Cycle



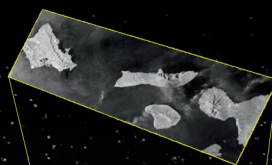
Radar and optical satellite data can be combined to add value to both existing services as well as new applications. The easy access to Airbus Defence and Space's full-fledged constellation portfolio allows users to select the optimal satellite solution, based on the respective application's thematic, temporal and spatial requirements.

The Power of Radar Satellite Images

Fully Operational at Night or in Clouded Conditions

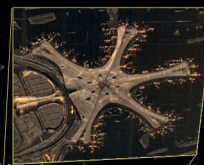


Wide Area Monitoring
Suited for e.g. maritime surveillance



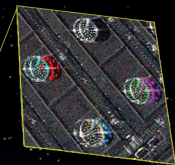
Pinpoint Detail

- Down to 0.25m resolution
- Image interpretation close to optical



Millimetre-accurate Monitoring

Enabling Surface motion analysis & change detection high spatial & temporal resolution



Airbus
Australia, Brazil, China, Finland, France,
Germany, Hungary, Singapore, Spain,
United Kingdom, United States

This document is not contractual.
Subject to change without notice.
© 2023 Airbus DS
All rights reserved.

X@AirbusSpace
www.intelligence-airbusds.com

AIRBUS