



Green Future Project

A turn-key SaaS solution for positive climate action & ESG.

Measure, Reduce, Monitor
and share your Impact.





Together, supporting businesses play their part in meeting the challenges of the *climate* and *ecological crisis*.

Science-based
decarbonisation
knowledge & expertise



High impact & tech
enabled sustainability
projects and solutions



The **360°** ESG Solution for your Net Zero Journey

Green Future Project and Pilio are excited to announce a partnership that supports businesses play their part in meeting the challenges of the climate and ecological crisis.

Together we offer a **360° end-to-end solution** for businesses to successfully design, implement and achieve their **ESG strategies**.



Green Future Project



Green Future Project is a **B-Corp**, providing a end to end solution for the development and implementation of corporate **ESG strategy**.

Green Future Project is the strategic partner for companies, providing a comprehensive and integrated platform for their sustainability journey. Our services are designed to redefine the relationship between business and climate action, demonstrating that profit and sustainability are and will be increasingly interconnected.



Pilio

Pilio spun out from the **University of Oxford's** Environmental Change Institute in 2011 to support businesses transform their to be climate positive in this decade of action by providing our clients with a net zero roadmap.

With more than 20-years translating environmental science into action, Pilio have worked with 100s of businesses across arts, commercial, education, energy, fashion, heritage, hospitality, manufacturing, and retails.

A 360° Solution for your ESG Strategy

Your end-to-end software to simplify sustainability practices & ESG reporting



Measure & Reduce

Carbon Accounting & Reporting Advisory

Calculating the carbon footprint makes it possible to identify the areas, factors or production steps that contribute most to the greenhouse gases emissions. This allows to take action by reducing impacts along the value chain or offsetting emissions.

What we offer

Corporate Carbon Footprint

- Set the organisation GHG emissions boundaries for Scope 1, 2 & 3 using the GHG Protocol; Organising and processing the data
- Full Carbon Audit Analysis
- SBTi's registration & evidence pack submission

- Carbon Footprint Report across impact areas & Recommendations section that will include: Recommendations for reduction of impact across all the areas reported. Recommendations for improving data quality, highlighting where there were data gaps in the footprint and how this can be improved for future footprints.

Product / Event Carbon Footprint

- LCA (Life Cycle Assessment) based on ISO 14067
- Product / Event Carbon Neutrality
- Full Carbon Audit across all areas of impact with an overall Carbon Footprint of the Product/Event

- Carbon Footprint Report across impact areas & Recommendations section that will include: Recommendations for reduction of impact across all the areas reported. Recommendations for improving data quality, highlighting where there were data gaps in the footprint and how this can be improved for future footprints.

What is it useful for?

The calculation of the **Carbon Footprint** will possibly be preparatory to obtaining the relevant certifications.

(In accordance with the ISO 14067 standard or LCA Life Cycle Assessment (UNI EN ISO 14040 and UNI EN ISO 14044), or according to UNI EN ISO 14064-1, or the GHG Reporting Protocol, or PAS 2050)





Measure & Reduce

Energy Management & Carbon Footprint Software

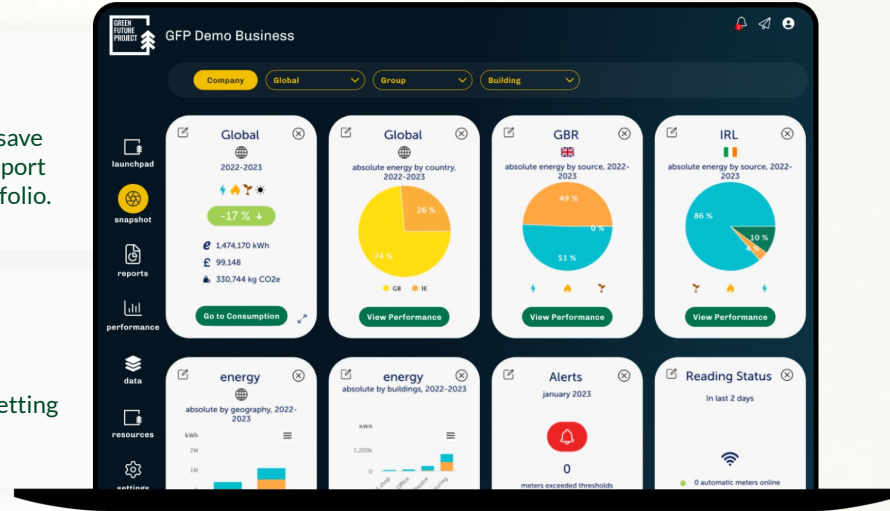
Measure emissions and initiate targeted actions to save energy, reduce costs and environmental impact.

Energy Management

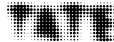
Monitor and manage your energy consumption to save money, reduce your environmental impacts, and report achievements across your company's building portfolio.

Carbon Footprint

Calculate your company's carbon footprint and demonstrate transparency and accountability by setting targets and working towards your net zero goals.



Clients



WHITBREAD



LUSH FRESH HANDMADE COSMETICS





Offset & Climate Action

Climate Positive Subscription

Designed for businesses aspiring to improve their sustainability actions / strategy.

Decarbonise your staff's carbon footprint by setting up a monthly carbon reduction plan.

Climate Positive Subscription is an easy way for companies to demonstrate to their employees the commitment to the environment by offsetting part of their professional and personal carbon footprint.

Clients





Offset & Climate Action

E-commerce & App API

Climate action per transaction.

The future of the business is sustainable.

Do you sell a product, good or service?

With GFP you can give your customers the opportunity to support high-impact environmental projects for every product they buy. A concrete contribution to the preservation of our planet with a click.

Clients

E-GAP

< BARBERINO'S >

CANNAVACCIUOLO

rite.

invicta

VIBIVENEZIA

MY STYLE
BAGS
MILANO

BLAZÉ MILANO

The service can be activated through two models:



Revenue percentage

Donate a percentage of your monthly proceeds to plant trees and protect forests.

Impact per Item

Plant a set amount of trees for each product sold.





Track & Report

GFP Dashboard: Your Climate Impact at a Glance

Monitor your impact, explore projects, download reports and share data with clients and stakeholders.

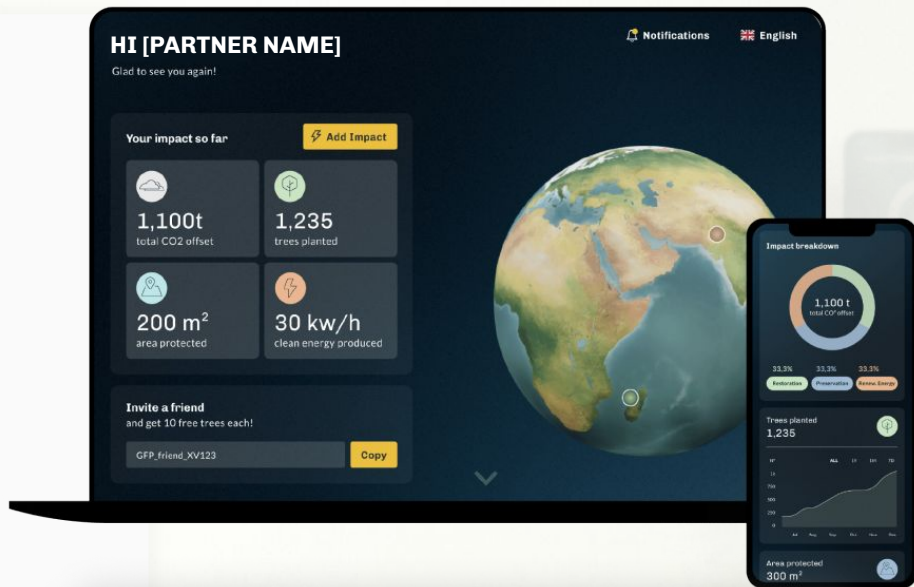
1. Track real-time climate impact

Share your impact card and download your Impact Report to show your stakeholders.

-  CO2 offset
-  Trees planted
-  Forest protected
-  Clean energy produced

2. Make your climate action visible

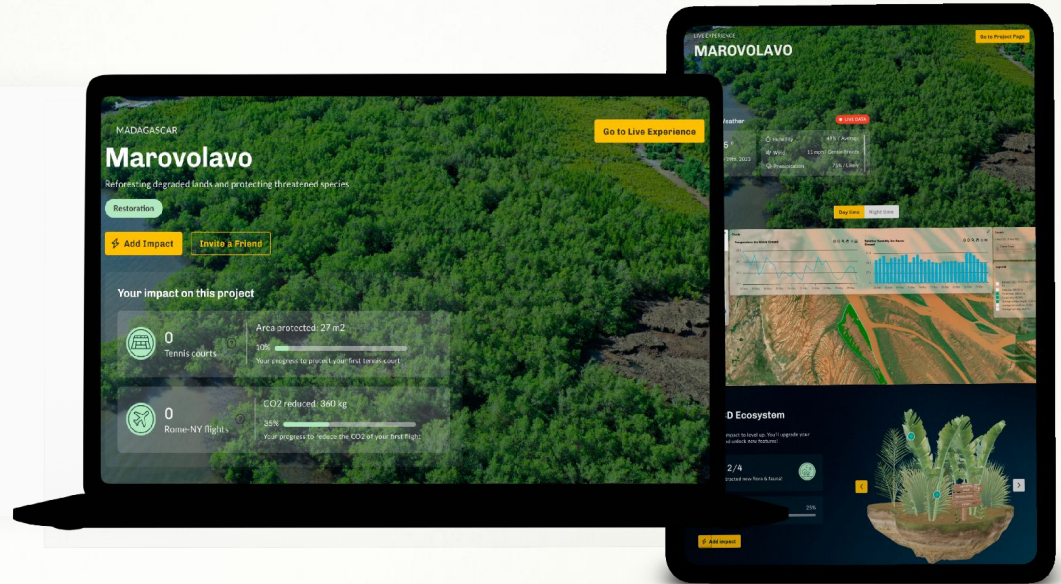
Showcase your dashboard & climate impact through a personalized widget on your website & product.



Transparency as an added value

Scientific information and projects progress in real time

Explore project progress in real time, through Orbify, an innovative technology that works at the satellite level. You will be able to observe crucial indices of forest health on your personal dashboard: a range of vegetation ratings, stand canopy height, temperature, humidity, perceived wind within the reserve, and more.





Communicate & Engage

GFP Climate Impact Widget

Show your impact on all your digital assets and platforms.

1. Showcase all aspects of your climate action

From CO2 offset to tree planting, have all your positive climate action in one place.

2. Apply to your website and apps

Add a customized widget to any digital platform you own.

3. Automatic real-time updates

Your GFP Dashboard and widgets update real-time.

The screenshot displays the Raiffeisen Bank International website with a dark green Climate Impact Widget overlay. The widget shows the following data:

Metric	Value
Trees Planted	274,354
Area Protected	205 hectares
Renewable Energy Produced	1,850 MWh
Corals Planted	84
CO2 Offset	6,604 t

The widget also includes a 'Discover' button and the text 'Powered by Green Future Project'.



Communicate & Engage

Employees & Stakeholder Engagement

Communicate, share and create engagement with your audience.

1. Sharable impact cards

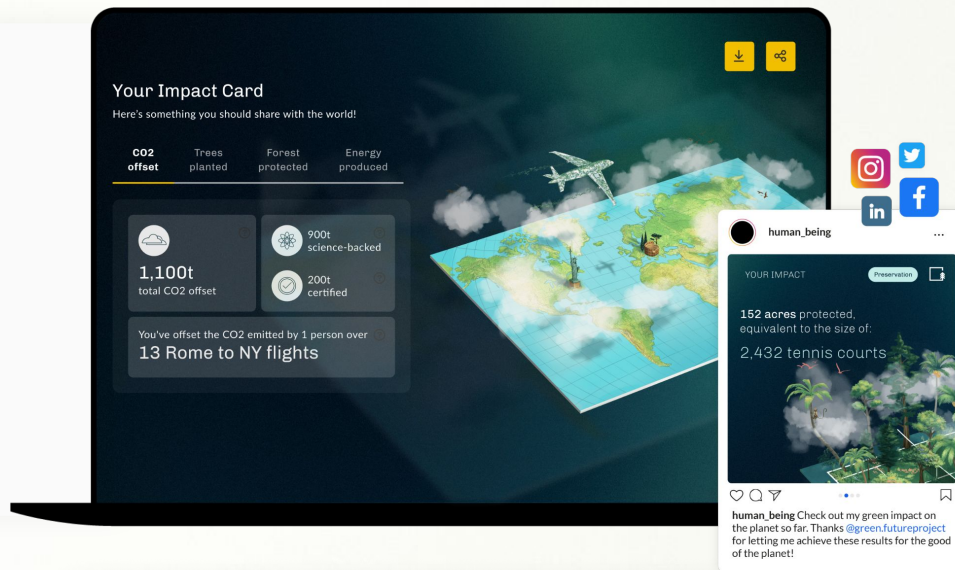
Download illustrated impact cards to share via email and social media.

2. Quarterly impact report

Get an impact report every 3 months to track your ESG performance.

3. ESG strategy updates

Collaborate with GFP to measure, evaluate, and update your ESG goals.



Online & Offline Engagement

GFP QR Code

Show the impact you have generated directly on your products



Impact Widget for your events

Show the impact you generated to offset emissions from your events



Partners and Advisors



Catherine Botttrill
Scientific Partner



Russell LayBerry
Scientific Partner



Martin Schaefer
Project Advisor



John Rogers
Carbon Advisor



David Markowitz
Forest Ecologist



Some of our clients

WHITBREAD

LUSH FRESH
HANDMADE
COSMETICS



VANITY FAIR

green  arrow
CAPITAL

INVESTCORP



rite.

 - GAP



POLITECNICO
MILANO 1863

WBSC
WORLD
BASEBALL SOFTBALL
CONFEDERATION

TEDx



BLAZÉ  MILANO

