



Net Zero Insights

The Net0 Platform is the premier destination for exploring the most relevant investment opportunities in climate tech.

Trusted by industry leaders

Balderton.
capital

 **CEMEX**
ventures

 Speedinvest

 InnoEnergy

Net Zero Insights' mission is to enable the transition to a **sustainable future** by giving decision-makers access to the leading market intelligence platform on **climate innovation**.

Through the Net0 Platform, Net Zero Insights provides high-quality data and insights on the climate tech venture market by being the best at tracking **organisations** and **funding rounds**.



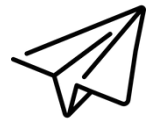
In 2022, **\$82B** were raised by climate tech companies across Europe and North America, +19% over 2021.

[Read the State of Climate Tech 2022 report](#)

The **Net0 Platform** helps you:



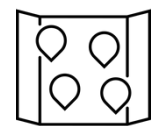
Research the **competitive** landscape



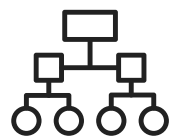
Stay up-to-date on the latest **innovations** and **funding rounds**



Explore the hottest **topics** in climate tech



Map out **markets** around the world



Deep dive into specific areas of **interest**

The features:

1. Access the largest database
in climate tech

+65K

Company
profiles

+185K

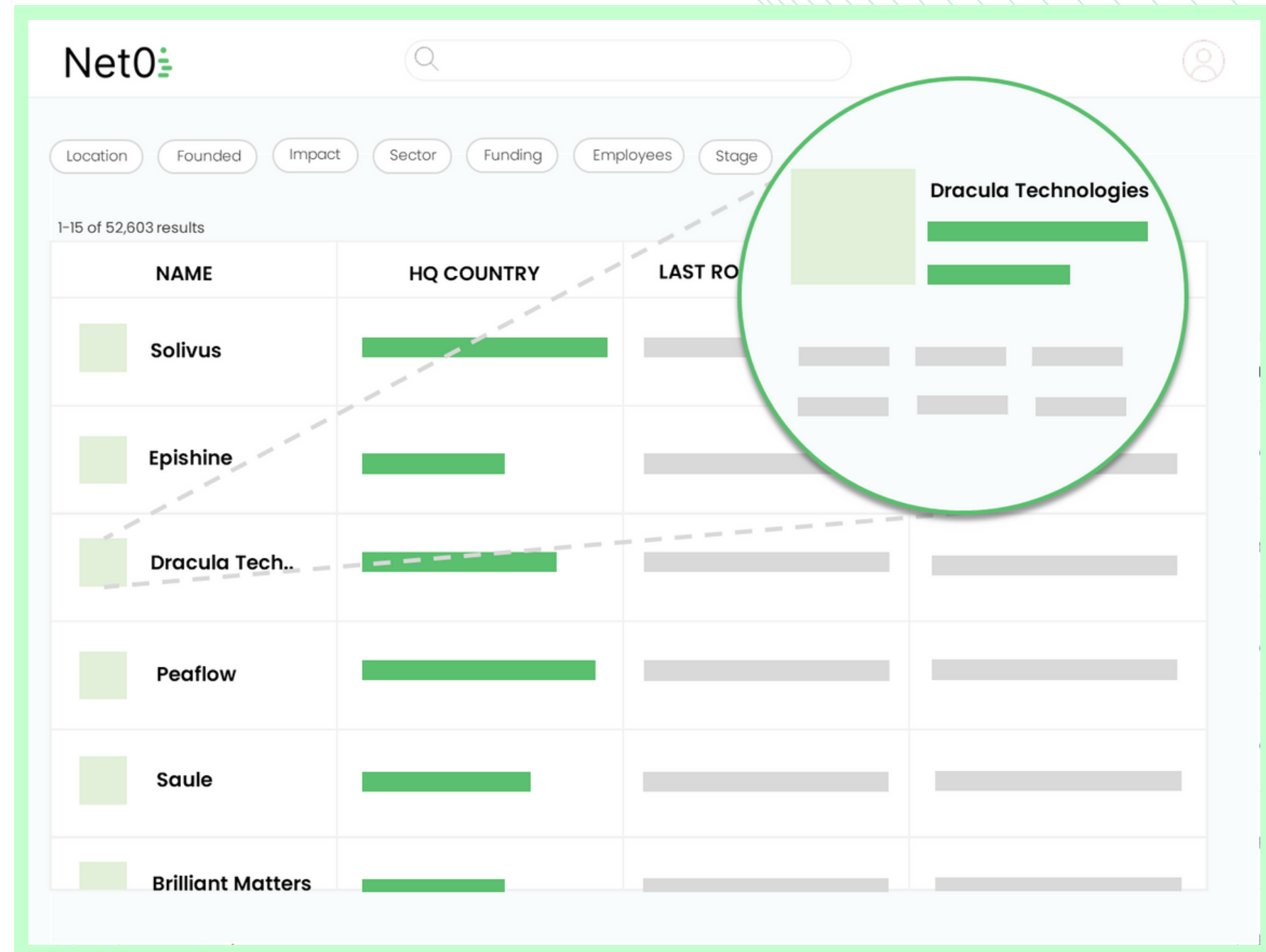
Business
contacts

+20K

Investors

+50K

Funding
rounds



2. Use advanced search features

Filter by location, impact levels, maturity, funding, size and activity sector, to spot opportunities based on your search criteria.

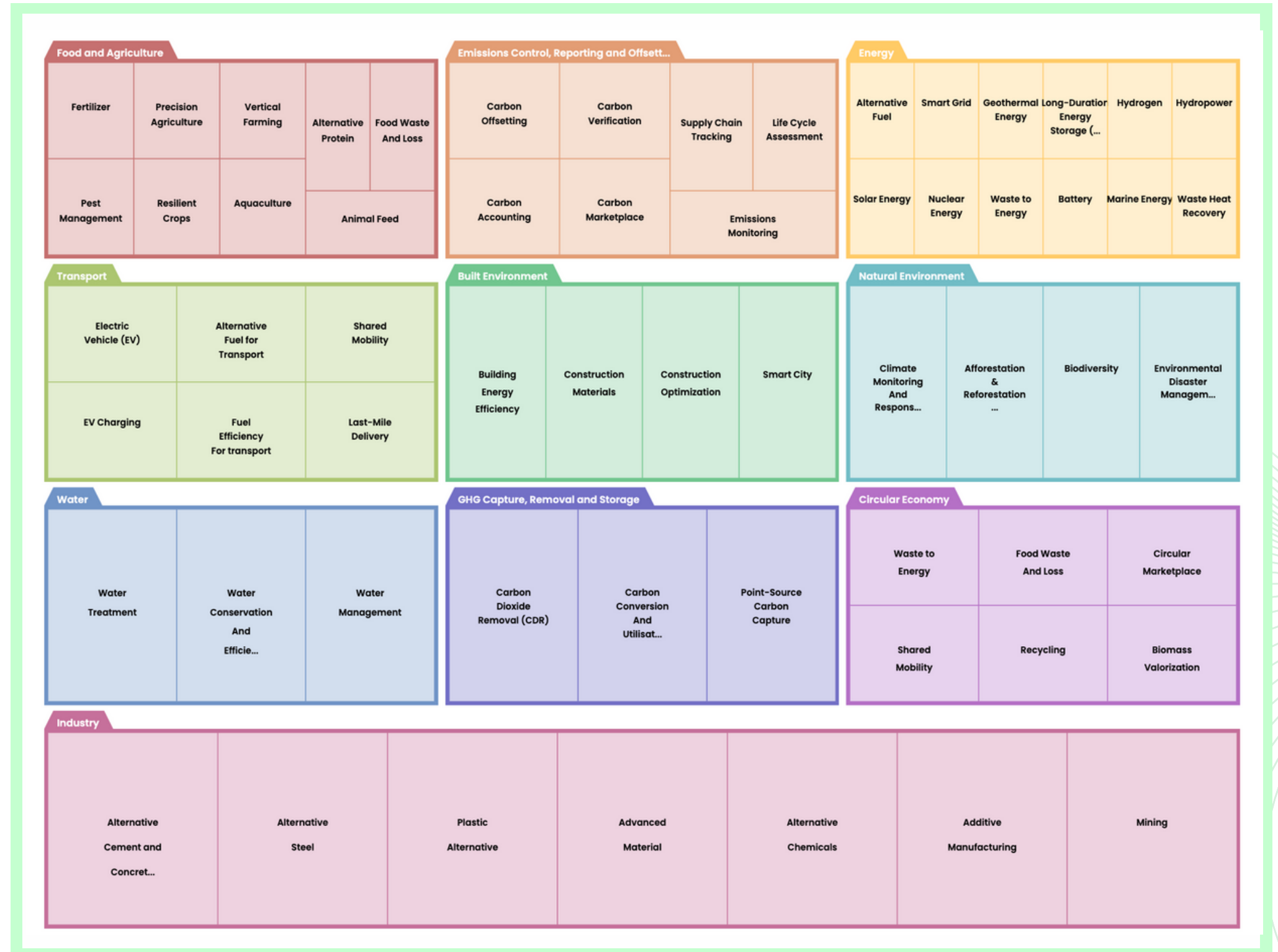
Want to dive deeper? The Net0 Platform returns all the organisations matching any free-text keywords or custom filters can be developed.

The screenshot displays the 'ACTIVITY SECTOR' filter section of the Net0 Platform. On the left, a sidebar lists navigation options: OVERVIEW, ACTIVITY SECTOR (highlighted), IMPACT METRICS, FUNDING ROUNDS, PATENTS, WILDCARD MATCH, and CUSTOM FILTERS. The main content area is titled 'ACTIVITY SECTORS & TAGS' and features a search input field containing 'energy'. A dropdown menu is open, showing suggestions: 'Solar energy', 'Wind energy' (highlighted), 'Geothermal energy', 'Tidal energy', and 'Offshore energy'. Below this, there are sections for 'QUICK PICKS' and 'CLIMATE CHANGE CHALLENGE AREAS'. The challenge areas section contains a grid of checkboxes for: Built environment, Food and agriculture, Natural environment, Circular economy, GHG removal, Transport, Emissions control, Industry, and Water. The 'SECTORS' section below has checkboxes for Bioeconomy, Constructions, and Cooling. At the bottom right, there are 'APPLY' and 'CANCEL' buttons.

3. Take advantage of the most in-depth climate taxonomy

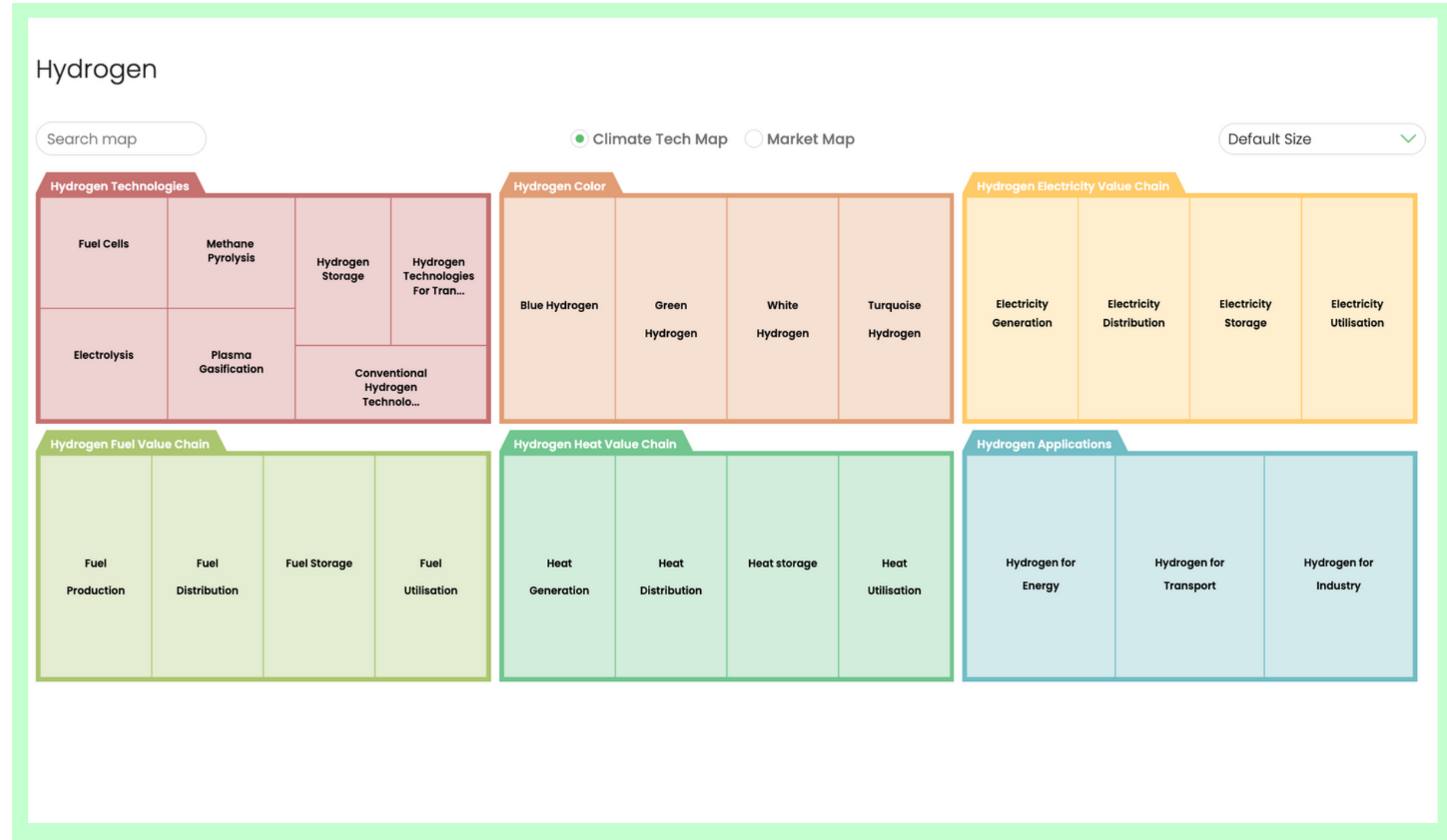
The Net0 platform taxonomy is designed to have greater granularity than you need!

Expert climate tech analysts manually review and classify each organisation diving into 200+ unique climate solutions. Giving you the full picture of the climate innovation landscape.



4. Custom frameworks for emerging hot topics

Expert climate tech analysts manually review and classify each organisation diving into the EU Taxonomy Sector, technology, value chain, business model, etc.



5. Bespoke market research for actionable intelligence.

Our data is translated into market reports for best-in-class intelligence on any topic of your choice.

Study curated market data, understand the innovation landscape, and explore the market maps to support your decision making.

Hydrogen ✍

Hydrogen serves as a clean energy carrier that can store and deliver energy without emitting CO2 when the energy required for its production is from renewable sources. As a result, hydrogen can play a pivotal role in decarbonizing the economy due to its versatility and has potential to replace fossil fuels in carbon-intensive industries.

The global demand for hydrogen is on the rise as renewable energy costs decrease, providing a cost-effective means for storing and transporting clean energy. The growing urgency to reduce CO2 emissions is also driving investment in hydrogen technology. One key sector where hydrogen holds a significant promise is transportation. This includes the use of hydrogen fuel cells in vehicles, especially in applications requiring long-range capabilities, like buses, trucks, and potentially even aviation and maritime transport. Other potential applications involve power generation and building heating while also contributing to emissions reduction in sectors like steel manufacturing and chemical industries. The transition to hydrogen necessitates expeditious policy actions to stimulate demand and facilitate investment for the expansion of production and infrastructure deployment.

1,254 <small>Organisations</small>	€5.74B <small>Funding last 12 months</small>	338 <small>Deals last 12 months</small>
1,415 <small>Investors</small>	€21.79B <small>Historical funding</small>	2,019 <small>Historical deals</small>

MARKET DATA
INNOVATION LANDSCAPE
MARKET MAP
METHODOLOGY

Expand all

Solutions Landscape
▼

Key players and projects
▼

Hurdles and Bottlenecks
▼

Tech Overview
▼

Sources
▼

6. Access analyst-vetted funding data, updated daily

Our team of data quality analysts manually updates funding rounds on a daily bases, providing details on the round type, amount, investors, and total funding raised to date.

Net0

Climeworks

Total funding [Progress Bar] Last round amount [Progress Bar]

Last round date [Progress Bar] Last round type [Progress Bar]

DATE	ROUND	AMOUNT	RAISED TO DATE	INVESTORS	SOURCES
[Progress Bar]	[Progress Bar]	[Progress Bar]	[Progress Bar]	[Progress Bar]	[Progress Bar]
[Progress Bar]	[Progress Bar]	[Progress Bar]	[Progress Bar]	[Progress Bar]	[Progress Bar]
[Progress Bar]	[Progress Bar]	[Progress Bar]	[Progress Bar]	[Progress Bar]	[Progress Bar]
[Progress Bar]	[Progress Bar]	[Progress Bar]	[Progress Bar]	[Progress Bar]	[Progress Bar]
[Progress Bar]	[Progress Bar]	[Progress Bar]	[Progress Bar]	[Progress Bar]	[Progress Bar]

NEWS SOURCES

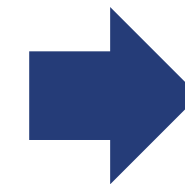
7. Native Affinity Integration

Streamline your workflow by automatically transferring data from the Net0 Platform to the Affinity CRM at flexible frequencies, saving you time and unnecessary headaches.

Create searches on the Net0 Platform (e.g. battery recycling) and automatically push the identified organizations to Affinity

Create custom lists of organisations on the Net0 Platform and push them automatically to Affinity

Push single organisations to Affinity



Centralize data sources in one place

Save time by making the Net0 Platform work for you

Optimize workflow

8. Get direct and fast access to key contacts

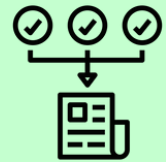
Easily navigate through the main company departments and select the decision-makers you want to connect with.

With access to 185K contacts- our database provides verified email addresses and LinkedIn profiles of all the key people of an organization and it is regularly refreshed.

The screenshot displays the Net0: interface. At the top left is the Net0: logo, and at the top right is a search bar and a user profile icon. Below the logo is the section title "TEAM AND CONTACTS". Underneath this title are several filter options: "All" (selected), "Founder", "C-Suite", "HR", "Marketing / PR", "Sales", "Tech", and "Decision maker". Below the filters is a table with the following columns: "NAME", "ROLE", "DEPARTMENT", "EMAIL", and "LINKEDIN". The table contains seven rows of data, each with a greyed-out name and role, a specific department, a greyed-out email address, and a LinkedIn icon. At the bottom of the table is a pagination control showing "1 2 3 4 ... 8".

NAME	ROLE	DEPARTMENT	EMAIL	LINKEDIN
[Redacted]	[Redacted]	C-Suite	[Redacted]	
[Redacted]	[Redacted]	Founder	[Redacted]	
[Redacted]	[Redacted]	HR	[Redacted]	
[Redacted]	[Redacted]	Marketing / PR	[Redacted]	
[Redacted]	[Redacted]	Tech	[Redacted]	
[Redacted]	[Redacted]	Sales	[Redacted]	
[Redacted]	[Redacted]	Founder	[Redacted]	

Data you can trust



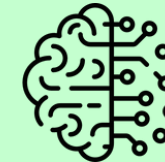
Ecosystem mapping

Our climate tech analysts meticulously map out investors, startup programs, newspapers and events to identify new companies and extract the latest data points.



Partnerships

We partner with startup programs, accelerators, and investors to scout companies at the earliest stages.



AI and machine learning

Our proprietary NLP algorithm that 'understands' the web content of a company and automatically excludes anything that falls out of our scope.



Validation

Our team of climate tech analysts cross-validates the data before it becomes live on the platform.

Clients benefiting from the Net0 Platform.

“As a prolific early-stage investor in climate tech, it makes perfect sense to us to have access to a startup database that has exclusive focus on climate – and Net Zero Insights is undoubtedly becoming a leader in the space. As an early user of the platform, we were impressed by the extensive market coverage and the depth of the sectors covered by them!”

Andreas Schwarzenbrunner
Partner at Speedinvest

THIRD
DERIVATIVE³

eit InnoEnergy

Balderton.

DB

MaRS

H₂UB
#HYDROVERSE

Ara Partners

MC
MASSCHALLENGE
SWITZERLAND

E44
VENTURES

EDB:
SINGAPORE

PJT

dena
Deutsche Energie-Agentur

Julius Bär

EPRI

Si Speedinvest

gfi / Good Food
Institute.

VALO

GEF | CAPITAL
PARTNERS

GREYCROFT



Net Zero Insights



[Schedule a call!](#)