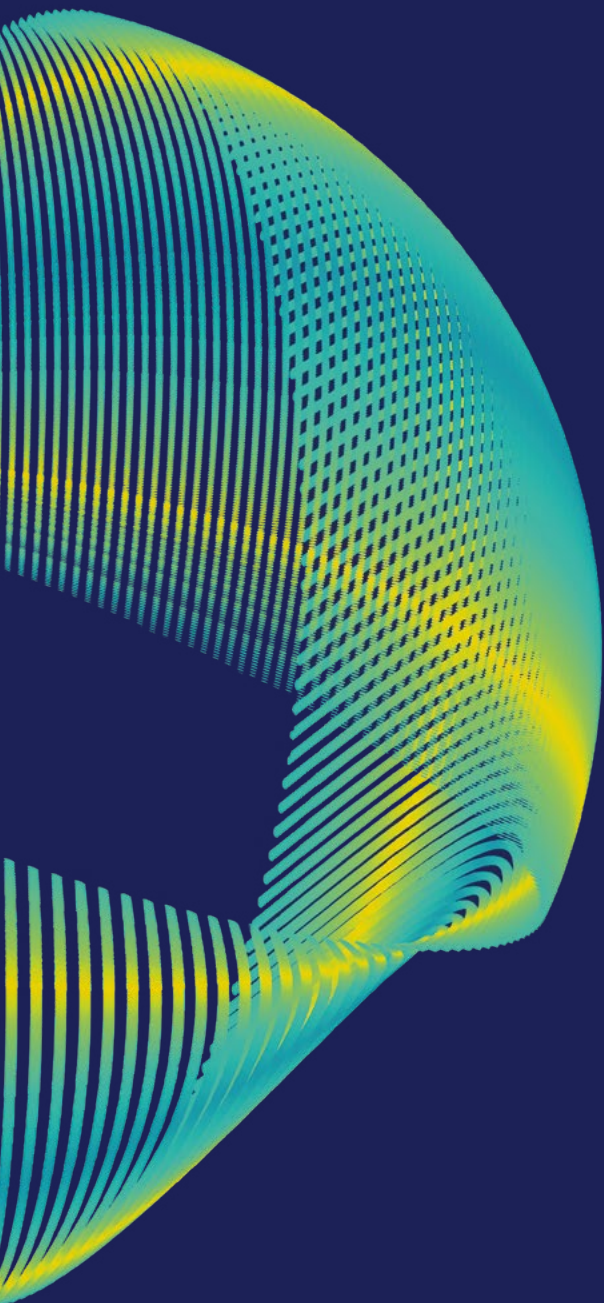


The future of business, today

An introduction to
Executive Education





The Imperial advantage

1st

University Rankings

Daily Mail University League
Table 2023 UK

6th

University Rankings

QS World University Rankings
2024

3rd

Most International Universities

Times Higher Education
2023 Europe

5th

Good University Guide

The Times and The Sunday Times
2023 UK

Executive Education at Imperial College Business School drives global business and social transformation through the fusion of business, technology and an entrepreneurial mindset. We are part of Imperial College London, a global leader in science and technology.

We combine innovative thinking and insight with new technology to develop solutions to real-world issues, benefiting business and improving society.

Our world-leading researchers pioneer practical solutions and their research excellence and long-established capabilities inform our Executive Education programmes.

We create and deliver remarkable learning experiences with a lasting positive impact.

Our thought leadership is sought by governments, policymakers and global business leaders, who partner with us on education, business transformation and research projects.

We consistently rank among the top business schools in Europe and worldwide.

We attract brilliant minds and provide the environment to foster innovative and entrepreneurial thinking, resulting in ground-breaking ideas that unlock business opportunities and transform careers.

We aim to be the best place any of us has ever worked: colleagues, faculty and contributors, learners, and business partners.

The future of business, today

Prince Albert was an early and hugely significant pioneer of experiential learning.

His legacy of the V&A, Natural History and the Science Museums were to a large extent funded by the profits from The Great Exhibition of 1851. His vision was to educate and stimulate collaboration through bringing together the most modern thinking in commerce, science, nature and culture.

The many globally-renowned institutions and colleges clustered around Exhibition Road were created from that time including what is now Imperial College London, a top-10 global university focused exclusively on science, technology, engineering, medicine and business. Prince Albert's remarkable vision has inspired a different approach to Executive Education.

Here, at Imperial College Executive Education, we continue to draw inspiration from Albert's legacy, to understand what discoveries in science, technology, engineering and medicine will mean for business and society – and how we should respond. This unique positioning as part of one of the world's great universities enables us to bring you the future of business, today.

David Brown

Director of Executive Education



The Imperial approach to Executive Education is different

Imperial is uniquely organised around the principle of collaboration across Academic Departments and Centres of Excellence. We convene the brightest minds across science, technology, engineering, medicine and business to create remarkable learning experiences that deliver sustainable value.

We create short programmes that are designed for individuals and small groups to deepen their capability and explore the most pressing challenges and opportunities in business and society. You can choose to learn online or join us in person.

Our customised programmes are created in partnership with organisations looking to address their most complex business challenges and build the capability of key leaders, teams and functions. We increase the value of learning, reduce the time to value and increase that value over time.

Imperial College Business School also partner with Corndel, the UK's leading apprenticeship provider, to deliver Data and Leadership apprenticeship programmes designed specifically for businesses seeking to upskill and develop their workforce. Our programmes combine academic rigour with real-world relevance, providing learners with the skills and knowledge they need to drive business success.

Together, we help individuals and businesses thrive in today's competitive marketplace with access to top-quality teaching, world-class coaching, and ongoing support.



Sustained Capability

=

Knowledge + Alignment + Mindset × Practice

By understanding the organisational context, we directly link learning to measurable and sustainable increases in individual and team capabilities.

Building knowledge and skills is important, but not enough. We combine deep subject matter expertise with world-class facilitation to ensure that building knowledge is at the heart of our approach.

Without alignment, learning doesn't get applied. We help you work with managers, sponsors, peers and wider stakeholders to ensure that capability grows and is sustained.

We address mindset (attitudes, beliefs and behaviours) to ensure learning is applied.

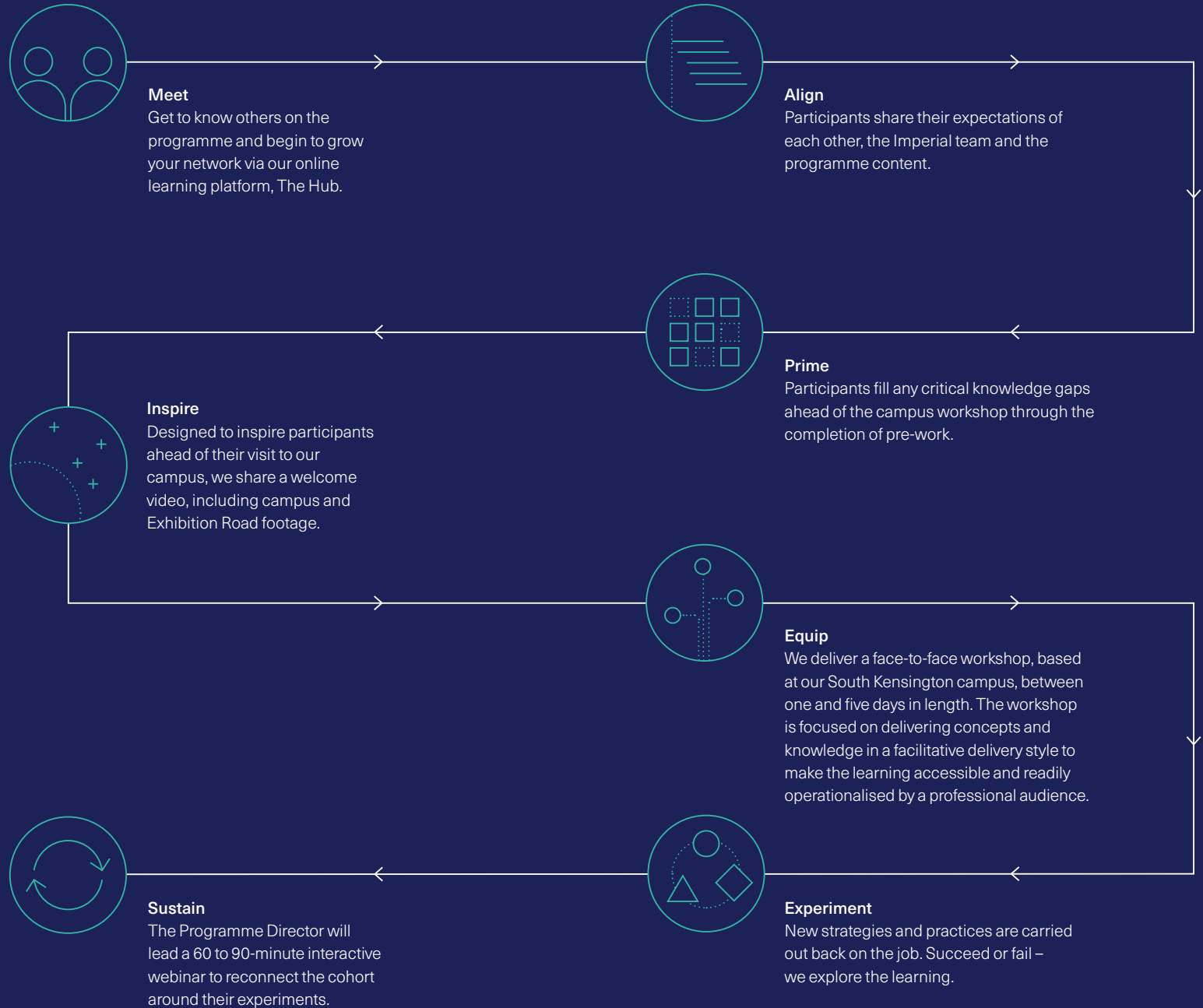
Practice counts. We create a safe environment for trying out new knowledge and ideas. Experimentation is in our DNA.

Our approach to learning

Our learning journey methodology ensures that all our programmes align around your needs to deliver measurable learning and business results.

Imperial's global reputation in educational technology influences all we do in Executive Education. Our online and integrated design and delivery capabilities are at the very forefront of what is possible.

In all formats we provide expert academic and practical commercially focussed facilitation. Using our programme design capabilities we create remarkable experiences, sustainable impact as well as new relationships and increased potential.



Short programmes for individuals and groups

Imperial's short programmes are designed for individuals and small groups looking to deepen their personal and professional capability, build enduring networks of like-minded professionals, and explore the most pressing challenges and opportunities in business and society, including developing new skills or switching career. They leverage our core strengths in science, technology, engineering, medicine and business and focus on the high-value space where these disciplines overlap.

Our programmes deliver high-touch, personalised learning regardless of how you choose to learn.

On-campus

On-campus programmes are our 'traditional' shorter programmes held at Imperial's South Kensington campus and between two and five full days in length. Some programmes might have online components pre and post. Our on-campus facilities provide dedicated learning, break out, catering and workspaces that, unlike a traditional lecture theatre environment, fully maximise your opportunities to collaborate, network and learn effectively.

Virtual

Our virtual programmes deliver the same content and meet the same learning objectives as our on-campus programmes. Content is primarily delivered through live online videos which also foster opportunities for networking with your peers and contributors. So the learning is spread out over one to four weeks.

Online

Our online programmes offer a unique and flexible learning experience, combining self-paced modules with a strong sense of community through cohort-based interactions and personalised support from success coaches. Participants can work through pre-recorded materials at their own pace, typically over six to eight weeks. What sets our online programmes apart is the emphasis on maintaining a high-touch, personalised approach to learning, with success coaches readily available to provide continuous support and guidance. Whether you prefer a structured coaching experience or an extended learning journey, we offer a diverse range of options tailored to suit your individual preferences and goals.

Apprenticeship Programmes

Part of Imperial's offering includes offering a range of apprenticeship programmes designed specifically for businesses seeking to upskill and develop their workforce. Our programmes combine academic rigour with real-world relevance, providing learners with the skills and knowledge they need to drive business success.

We help individuals and businesses thrive in today's competitive marketplace with access to top-quality teaching, world-class coaching, and ongoing support.

Programmes sit within the following six core topic areas:

Technology & Analytics

Our programmes combine Imperial's pioneering capability in AI, Technology & Analytics and to focus on innovative business thinking. We are a globally-recognised leader in cyber security, artificial intelligence, machine learning and big data, which we apply to solving the latest business challenges. We pride ourselves as being ahead of the technological curve and using our knowledge and networks to make organisations more competitive and sustainable.

Marketing & Strategy

Disruptive technologies are driving entrepreneurial opportunities. AI and Data are transforming marketing approaches. Our Strategy and Marketing training courses inspire Executives to generate compelling business ideas and equip them with skills and tools for effective go-to-market strategies. The demand for Digital Marketing expertise is at an all-time high. Our Executive Education programs enable organisational transformation and foster growth in Digital Marketing careers.

Sustainability & Climate

At Imperial, we believe Executive Education should empower leaders to tackle the greatest challenges in business and society. Among these challenges, none are more significant or complex than sustainability and addressing climate change. Our Climate and Sustainability courses, developed in collaboration with esteemed institutions like the Grantham Institute and the Leonardo Centre for Business on Society, equip leaders with the knowledge, skills, and mindset needed to drive innovative approaches toward achieving net-zero and adapting business models to meet evolving consumer and investor expectations of sustainable enterprise in society.

Finance & Economics

Global macroeconomic and geopolitical trends are profoundly influencing organizations. In-demand executives comprehend the mechanics of finance and economics, utilising them to make informed business decisions. Our finance courses provide executives with the essential knowledge, skills, and behaviours to navigate today's complex operating environment. Whether it's mastering Finance Fundamentals, delving into Venture Capital, M&A, and Private Equity, or enhancing expertise in Sustainable Finance, our world-class training, delivered by renowned experts, sets the standard.

Healthcare

Forces are reshaping healthcare into a data-driven, patient-centric paradigm. This entails technological, organizational, and policy convergence. With rising demands on health services due to factors like an aging population and unpredictable challenges such as climate change, stagnation is not an option. Healthcare leaders worldwide must reimagine service design and delivery. Our health management courses equip healthcare professionals across the value chain, whether clinical or non-clinical, with the knowledge, skills, and behaviours to excel in achieving optimal outcomes for patients, organizations, and society.

Leadership

In today's crucial times, exceptional leadership is more vital than ever. Geopolitical uncertainty, climate change, digital transformation, and AI necessitate responsible, sustainable, and authentic decision-makers. Our Leadership courses empower current and future leaders with the necessary knowledge, skills, and behaviours to navigate complexity and create value. Delivered by renowned academics and practitioners from diverse sectors and geographies.

On-campus programmes



Innovation: A Design Thinking Approach

Imperial Innovation: A Design Thinking Approach programme is a four-day course that guides participants towards becoming champions of innovation within their organisations. The programme delivers hands-on learning experiences that will give participants the mindset and practical tools to develop business ideas into commercial propositions.

Executing Sustainability Strategies

The programme gives you the depth, time, and space you need to refine and implement your sustainability strategy—with continuous, follow-through support and guidance from the Imperial College ecosystem of world experts in sustainability and leadership. Through a blended approach of on-campus, self-paced learning, mentoring and next-generation meditation techniques, you will develop a sustainable mindset, build the insights, tools and leadership capabilities

Leading Systemic Innovation in Healthcare

This programme goes beyond addressing symptoms and existing challenges. It's about identifying the root causes of healthcare challenges and reshaping the very foundations of the industry, with a strong focus on personalised medicine, systemic innovation, and systems thinking.

Leadership in a Technology Driven World

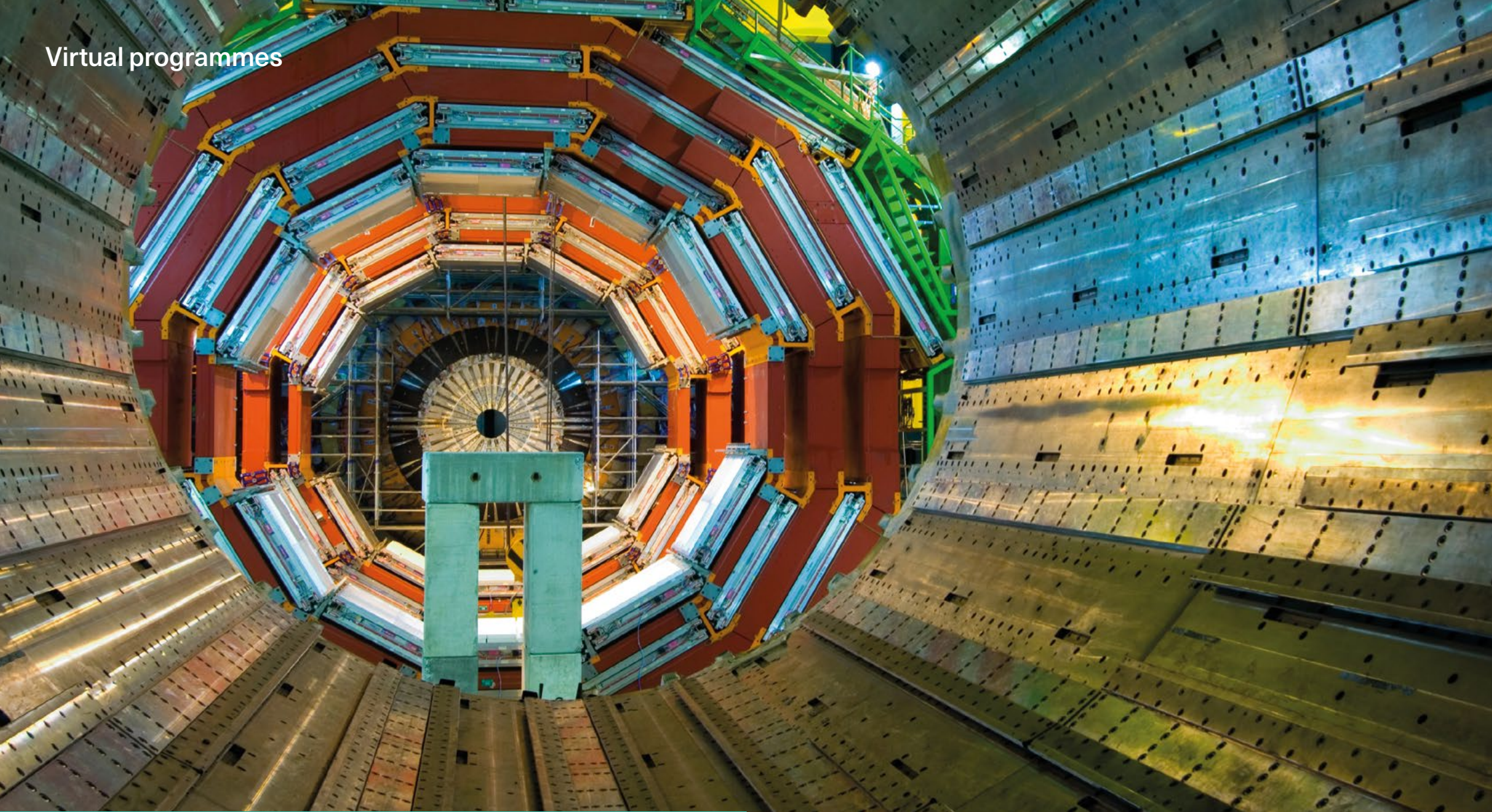
Are you looking to lead, build and sustain a successful team? Join the UK's most innovative university where leaders gain skills for a tech-driven world. This five-day course will equip you with the skills to lead your team through the digital age. The programme offers a practical and personalised learning approach, backed by theory and delivered through interactive coaching elements.

Digital Transformation Strategy

On this five-day course you will gain the skills to develop and implement a digital strategy within your organisation. Drawing on insights from Imperial College Business School faculty, industry leaders, case studies, and your peers, you will develop a robust understanding of digital cultures, foundations, and frameworks to craft your own transformational strategy. Explore how Artificial Intelligence, ChatGPT, Web 3.0 et al. are a catalyst for digital transformation.

Risk Management

The five-day programme is expertly designed to help you spot potential financial, corporate, societal, and environmental risks facing your organisation. And to build the practical tools and frameworks to measure and hedge those risks, to bolster your future performance in these unpredictable times.



Leadership in a Technology Driven World

This 9 week live online programme will equip you with the skills, the clarity of vision and the confidence to lead your teams in the age of digital. Drawing fully on the expertise of Imperial College Business School, this eight-week online learning journey offers you a practical and personalised learning approach, backed by theory and delivered through interactive coaching elements. You will experience live online teaching sessions, video lectures, interactive activities and assignments whilst receiving personal support from a dedicated Learning Team.

Online programmes

Finance & Economics

Private Equity

This 11-week online programme draws on expertise from Imperial College Business School faculty, industry experts and case studies. You will explore the types and economics of private equity and topics such as raising equity and debt, growth capital, leveraged buyouts, and distress. You'll also learn how to set up private equity firms and funds, and discover career opportunities available in the industry.

Venture Capital Finance

This 7-week online programme gives the perspectives of both investor and investee, yielding a comprehensive view of the entire VC landscape. Venture capital has become an attractive asset class, offering diversification and opportunity to many investors and entrepreneurs. This course draws on expertise from Imperial College Business School faculty, industry experts and case studies. You will also draw on the expertise of your peers.

Mergers & Acquisitions

This 11-week online programme leads you through both the financial and the strategic aspects of corporate restructuring. You will identify the functions, benefits, and challenges of various forms of

mergers and acquisitions, and by the programme's close you will be equipped to participate in a successful M&A deal, from identifying the benefits for both buyer and seller, to establishing valuation, to leveraging bidding techniques.

Healthcare

Digital Transformation in Healthcare: Innovation, Strategies, and Processes

The 9-week online programme offers a practical look at the challenges health systems and healthcare providers face, and how digital innovations can improve factors like efficiency, quality, and safety. It draws on expertise from Imperial College Business School faculty, industry experts, simulations, and case studies.

Marketing, Innovation & Strategy

Professional Certificate in Digital Marketing

This 21-week online programme will provide you with in-depth knowledge of the latest digital marketing tools and techniques. It will also help you understand ways to leverage digital marketing channels and consumer analytics, develop a deep insight into consumer behaviour, and effectively market to your customers.

Sustainability & Climate

Sustainability Leadership

This award-winning 13-week online programme will provide you with the methods and the mindset to help you create a sustainability plan with real impact for your business. In this programme, you will learn how to run a sustainable business and promote a corporate culture that prioritises social responsibility.

Sustainable Finance and Investing

This 6-week online programme draws on expertise from Imperial College Business School and Centre for Climate Finance & Investment faculty, industry experts and case studies. You will also draw on the expertise of your peers.

Leadership

Digital Transformation Leadership

The Digital Transformation Leadership programme is a 20-week online programme which will equip you with the strategic foresight and leadership capabilities required to consistently create and sustain a competitive advantage, and cultivate a people-centric organisation. Whether you are directly responsible for digital transformation strategies at your organisation, or are interested in

developing your leadership skills in this domain, this programme will equip you with the tools, frameworks and mindset to drive digital and people transformation for a sustained competitive advantage.

Technology, Analytics & Data Science

Business Analytics: From Data to Decisions

This 4-month online programme will expand your understanding of business analytics and teach you how to use descriptive, predictive and prescriptive analytics to identify, analyse and solve critical business problems. You will learn to effectively evaluate recommendations and communicate credibly with those who have deep technical knowledge in the field, having a greater impact within your organisation.

Digital Transformation: 5 Game-Changing Technologies for Business

The 9-week online programme draws on expertise from Imperial College Business School faculty, industry experts and case studies. You will also draw on the expertise of your peers and explore how to use technologies to implement digital transformations across your organisation.

Professional Certificate in Data Analytics

This 25-week online programme will provide you with the skills necessary to clean, manipulate, analyse, and visualise data, and identify critical business insights. You will also establish a strong technical foundation with relevant business applications, and gain an analytical toolkit to help you succeed in a data-driven role. Throughout this programme, you will benefit from the deep knowledge of our expert faculty, learn from video lectures and hands-on activities.

Professional Certificate in Machine Learning and Artificial Intelligence

This 25-week online programme, developed jointly with the

Department of Computing, will provide you with in-depth knowledge of fundamental and advanced concepts and trends in AI, the ability to determine when machine learning is feasible and can add value to business challenges, and the capacity to leverage the power of data and evaluate common machine learning methods to improve performance.



Apprenticeship Programmes



The Imperial College and Corndel Executive Development Programme

The Executive Development programme provides a transformative and personalised learning journey that brings together the academic excellence of a world-leading University and the coaching expertise of the UK's largest management training provider.

The Imperial College and Corndel Healthcare Leadership Development Programme

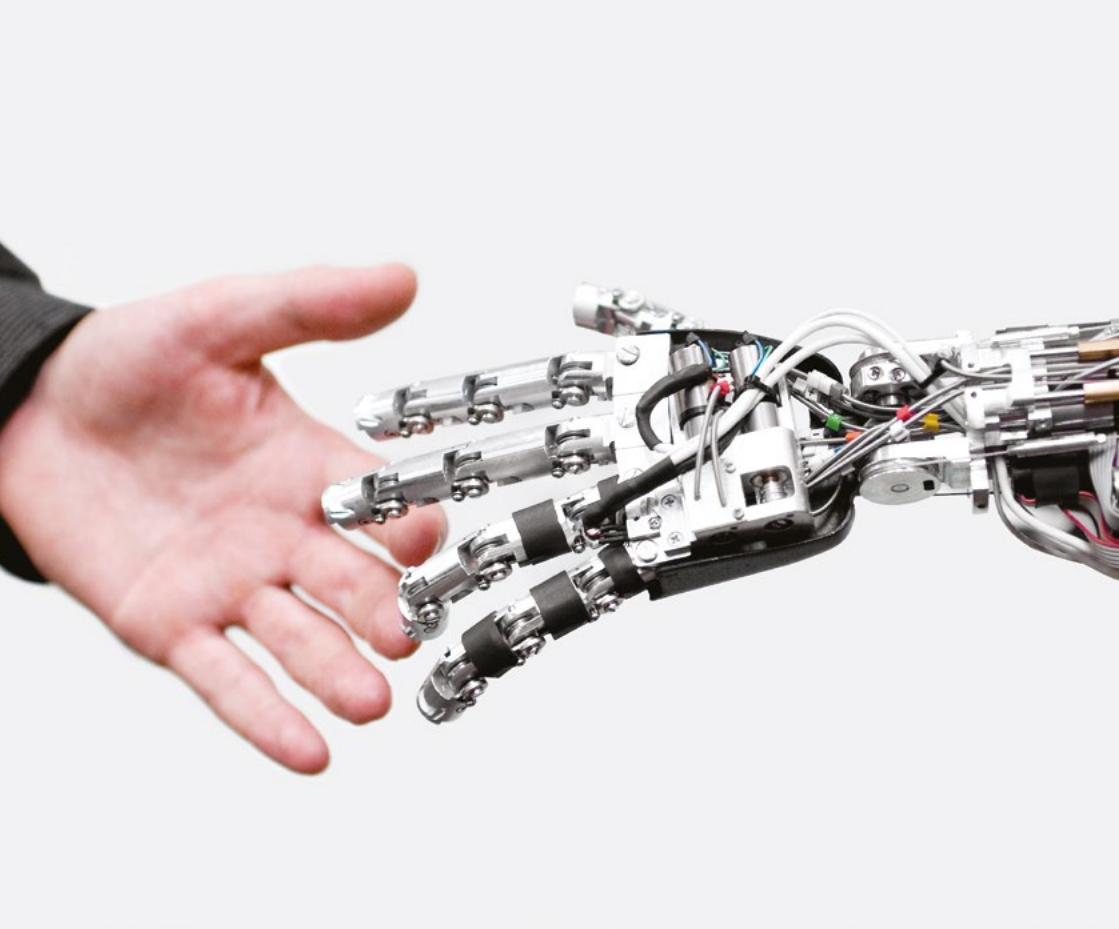
The Imperial College and Corndel prestigious healthcare leadership programme provides a transformative and personalised development journey from an internationally renowned University, integrated with one-to-one mentoring and support through Corndel.

The Imperial College and Corndel Data-Driven Professional Programme

The 14-month programme is designed to enable professionals from a variety of corporate functions to gain the critical knowledge, skills and behaviours needed to understand business intelligence and use that information to inform decision making.

The Imperial College and Corndel Data Analyst Programme

The 14-The Imperial College and Corndel Data Analyst the 18-month programme is designed to enable professionals across a variety of corporate functions to gain the critical knowledge, skills and behaviours needed to successfully gain business insights.



Custom programmes for organisations

Our approach to designing, developing and delivering custom programmes for organisations is centred around you. By putting your organisational challenges, opportunities, culture, ambition and history at the heart of our approach, we build strong partnerships that enable people to do their best work.

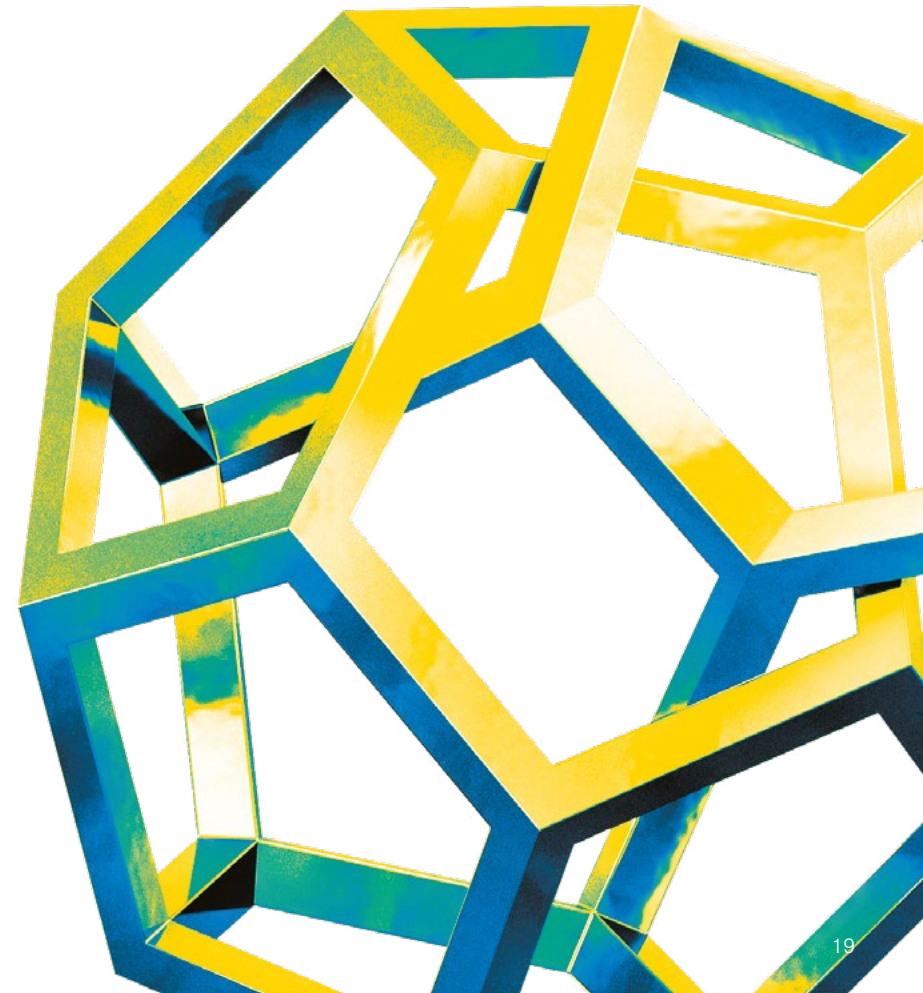
Our robust design and development process and carefully crafted teams mean that we can accelerate the time it takes for your initiative to grow and sustain capability across your organisation. There are two key elements to our approach:

Impact mapping

Our design process begins with understanding the business or organisational objectives you want to achieve. These are our anchor points and ensure that all the content, tools and methodologies we build into our co-created solution are aligned and measurable.

Organised to customise

The uniqueness of your organisational context means that a truly bespoke approach to your learning solution is critical. With deep knowledge of your context and ability to convene the finest minds, learning methodologies and resources from across Imperial's ecosystem, your dedicated client team is organised around creating remarkable learning experiences that deliver sustained increases in capability.



Your engagement with Imperial is so much more than Executive Education

Imperial Business Partners

Opportunities to network and exchange insights with our researchers through consulting services, workshops and dinners.

Industry Partnerships and Commercialisation

One of the most effective ways for businesses to benefit from our world-leading academic expertise is to partner with us in collaborative research and to license our technologies.

Degree Programmes

Imperial College Business School's MBA, MSc & Undergraduate programmes fuse vital business thinking with technology insights to develop entrepreneurial mindsets.

Career Service

Opportunities to reach and recruit students, advertise vacancies and take part in events.

Our partner institute's and research centres:

Grantham Institute - Climate Change and Environment

Producing world-class research, training and innovation towards effective action on climate change and the environment.

Data Science Institute

Dedicated to advancing research and building community in the field of data science, the integrative fusion of mathematics, statistics, and computer science.

Leonardo Centre on Business for Society

The centre's aims to accelerate the transition to sustainable and inclusive logics of business using experimentation and innovative initiatives. They have

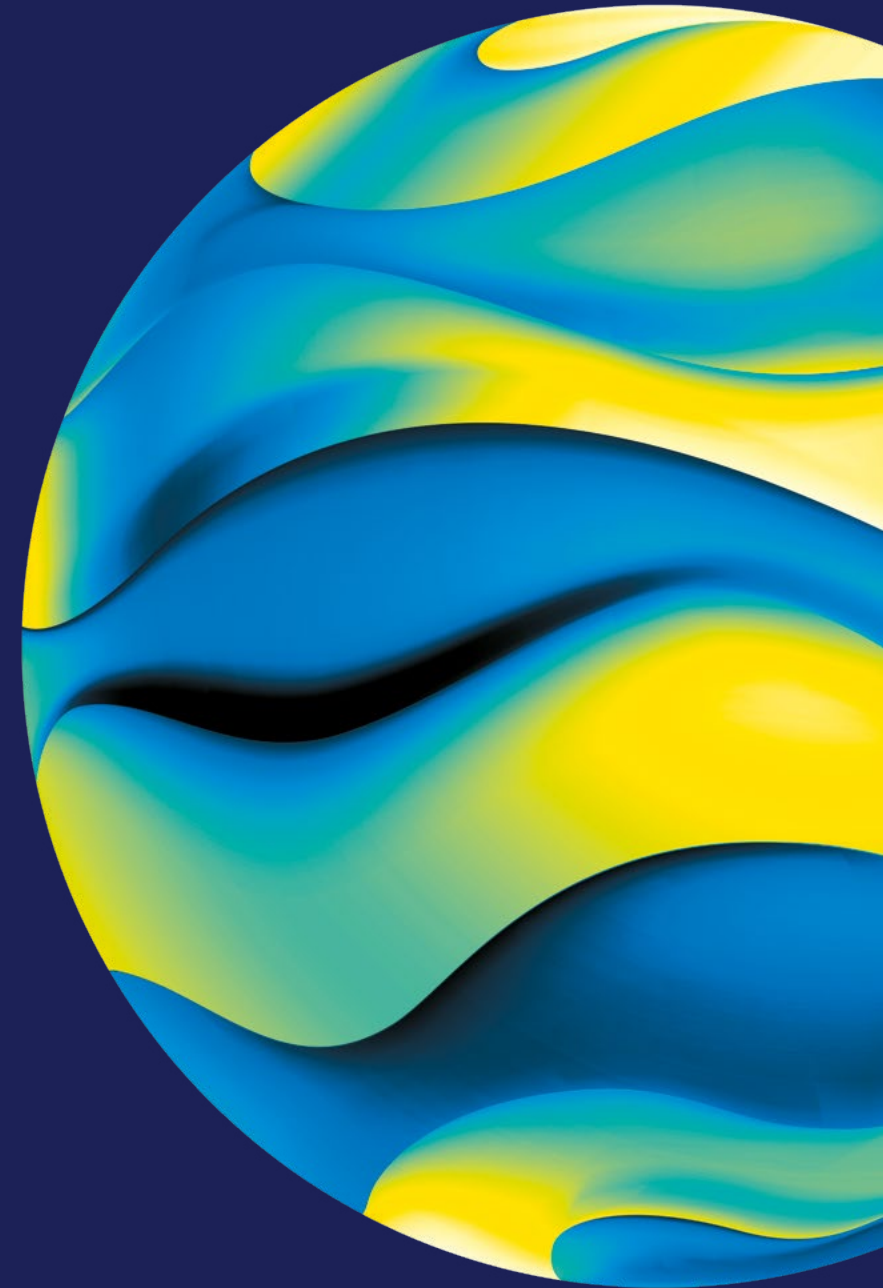
developed a number of research programmes, articulated along the regeneration of the natural, social, and socio-economic environment.

The Centre for Climate Finance & Investment

The centre unlocks solutions within capital markets to address the challenges posed by global climate change through interdisciplinary research.

The Centre for Responsible Leadership

Drawing on academic theory and business practice, the centre focuses on generating meaningful change in businesses and organisations through evidence-based research.



Programme Calendar 2024

Date / Duration	Programme Name	Delivery	Fee
18 Jan – 4 Apr 11 weeks	Mergers and Acquisitions	Online	£1,450
23 Jan – 16 Jul 25 weeks	Professional Certificate in Machine Learning & Artificial Intelligence	Online	£3,995
23 Jan – 26 Mar 9 weeks	Digital Transformation: 5 Game-Changing Technologies for Business	Online	£1,280
23 Jan – 30 Apr 13 weeks	Imperial Sustainability Leadership Programme	Online	£3,000
30 Jan – 9 Apr 9 weeks	Digital Transformation in Healthcare: Innovation, Strategies & Processes	Online	£1,280
6 Feb – 23 Jul 21 weeks	Professional Certificate in Digital Marketing	Online	£3,995
8 Feb – 28 Mar 7 weeks	Venture Capital: Master Startup Funding and Investment Strategies	Online	£1,450
8 Feb – 24 Jul 25 weeks	Professional Certificate in Data Analytics	Online	£3,995
22 Feb – 9 May 11 weeks	Private Equity	Online	£1,450
26 Feb – 1 March 5 days	Leadership in a Technology Driven World Programme	On-campus	£6,950
4–8 March 5 days	Digital Transformation Strategy	On Campus	£5,950
19 Mar – 30 Apr 6 weeks	Sustainable Finance and Investing: Unlock Global Investment Strategies	Online	£1,450
19 Mar – 8 Sep 25 weeks	Professional Certificate in Machine Learning & Artificial Intelligence	Online	£3,995
26 Mar – 28 May 9 weeks	Digital Transformation: 5 Game-Changing Technologies for Business	Online	£1,280
26 Mar – 2 Jul 13 weeks	Imperial Sustainability Leadership Programme	Online	£3,000
28 Mar – 13 Jun 11 weeks	Mergers and Acquisitions	Online	£1,450
4 Apr – 23 May 7 weeks	Venture Capital: Master Startup Funding and Investment Strategies	Online	£1,450
9 Apr – 18 Jun 9 weeks	Digital Transformation in Healthcare: Innovation, Strategies & Processes	Online	£1,280
23 Apr – 8 Oct 21 weeks	Professional Certificate in Digital Marketing	Online	£3,995
25 Apr – 11 Jul 11 weeks	Private Equity	Online	£1,450
29 Apr – 3 May 5 days	Risk Management	On Campus	£5,950

Date / Duration	Programme Name	Delivery	Fee
9 May – 22 Oct 25 weeks	Professional Certificate in Data Analytics	Online	£3,995
14–17 May 4 days	Innovation: A Design Thinking Approach	On-campus	£4,350
14 May – 30 Jul 11 weeks	Mergers and Acquisitions	Online	£1,450
21 May – 12 Nov 25 weeks	Professional Certificate in Machine Learning & Artificial Intelligence	Online	£3,995
28 May – 30 Jul 9 weeks	Digital Transformation: 5 Game-Changing Technologies for Business	Online	£1,280
3–7 June 5 days	Leading Systemic Innovation in Healthcare	On-campus	£6,950
4 Jun – 10 Sep 13 weeks	Imperial Sustainability Leadership Programme	Online	£3,000
6 Jun – 25 Jul 7 weeks	Venture Capital: Master Startup Funding and Investment Strategies	Online	£1,450
10–14 June 5 days	Leadership in a Technology Driven World	On Campus	£6,950
17–21 June 5 days	Digital Transformation Strategy	On-campus	£5,950
18 Jun – 29 Aug 9 weeks	Digital Transformation in Healthcare: Innovation, Strategies & Processes	Online	£1,280
24–28 June 5 days	Executing Sustainability Strategies	On-campus	£6,950
27 Jun – 12 Sep 11 weeks	Private Equity	Online	£1,450

Contact us:

Our founding stories are about research, technology applied, interdisciplinary thinking, innovation, business and both organisational and individual growth, all in the service of making a better world. But most of all about partnership, collaboration and community. If you would like to explore these elements more, please contact us.


W: imperial.ac.uk/executive-education

E: exec.ed@imperial.ac.uk

T: 020 7594 2400

Executive Education
Imperial College Business School
South Kensington Campus
London SW7 2AZ
United Kingdom

Follow us on social media:

 [linkedin.com/showcase/
imperial-college-
executive-education](https://www.linkedin.com/showcase/imperial-college-executive-education)

 [@ImperialExecEd](https://twitter.com/ImperialExecEd)

 [@imperialbiz](https://www.instagram.com/imperialbiz)

 [facebook.com/imperialbusiness](https://www.facebook.com/imperialbusiness)