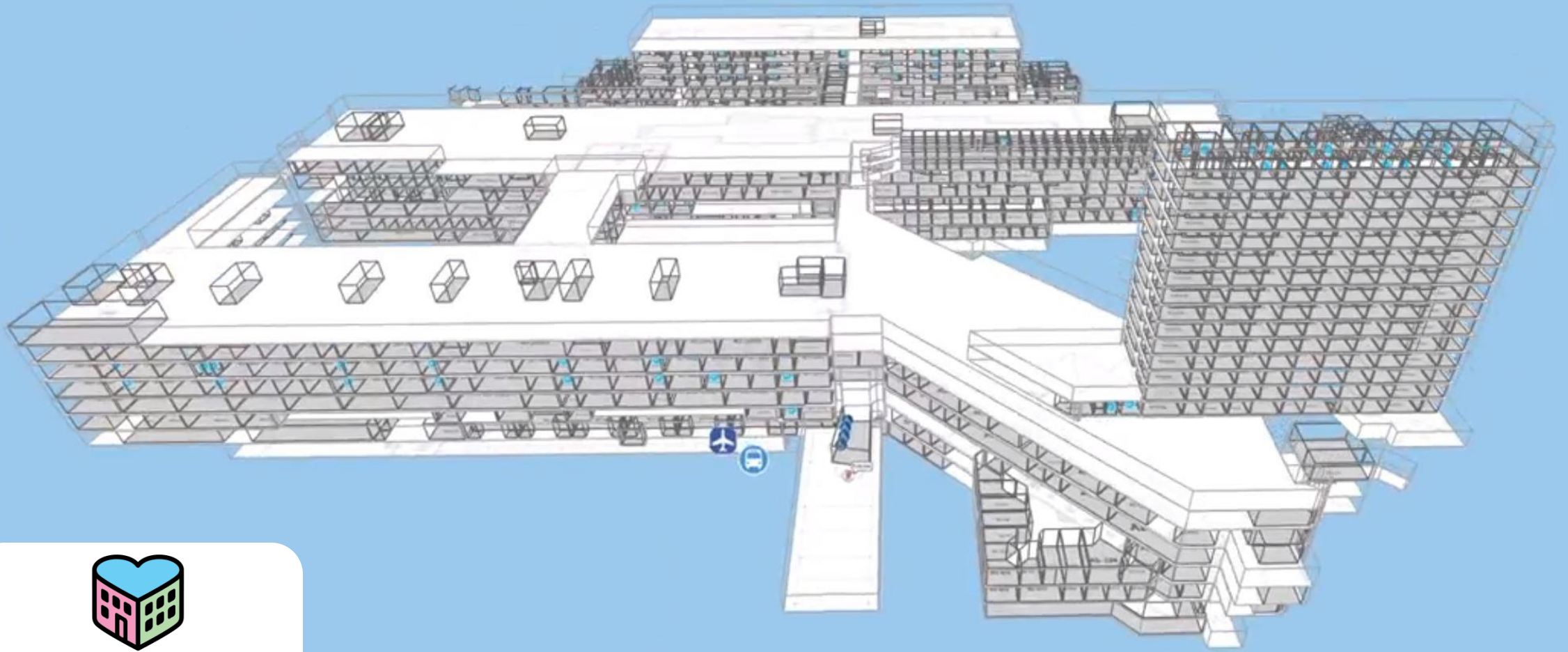


The Impact of Smart Building Technology on the Future of Work

Ken Dooley
January 2023



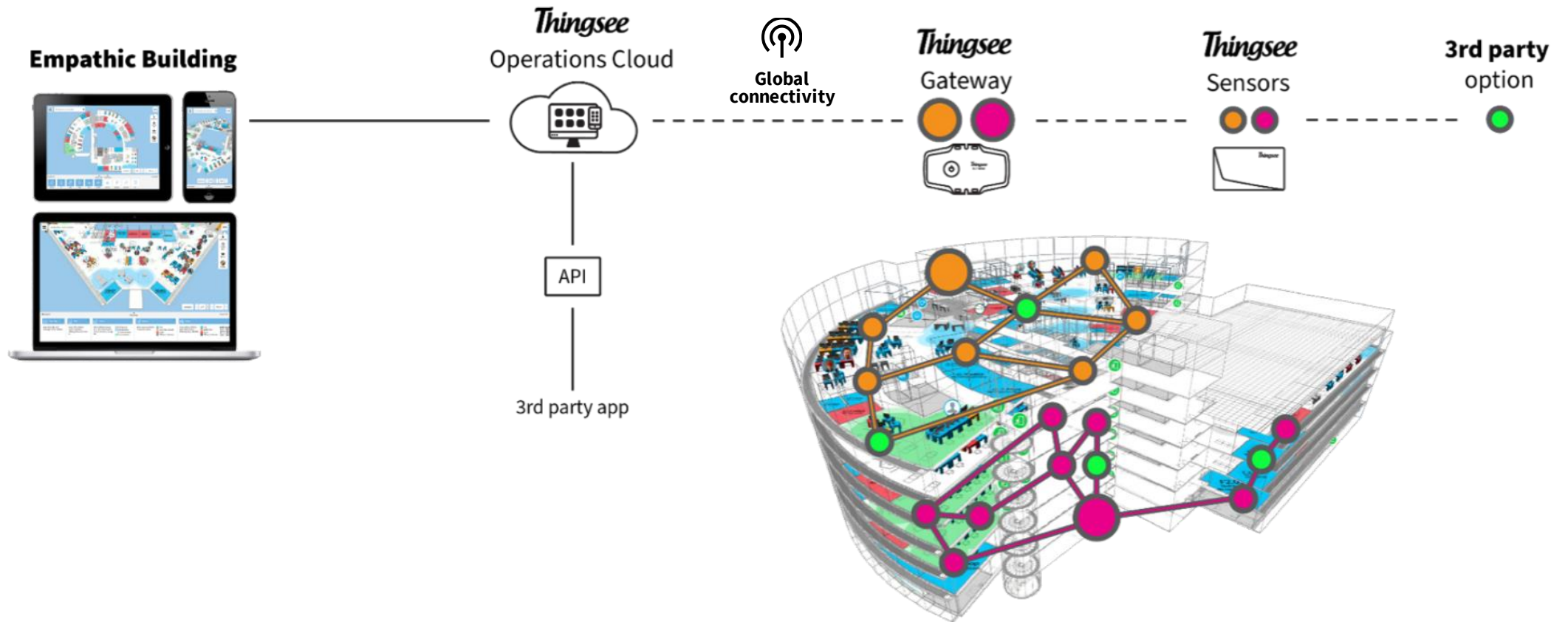
empathic building®

Reserve desks & rooms
and find colleagues

Deliver the key data for
operational excellence



Empathic Building with Full Stack IoT



More relevant than ever

The current issue and full text archive of this journal is available on Emerald Insight at:
<https://www.emerald.com/insight/0263-2772.htm>

Smart workplace solutions – can they deliver the offices that employees have been waiting for?

Smart
workplace
solutions

Laura Remes

*Department of Electrical Engineering and Automation, Aalto University,
Espoo, Finland*

Kenneth Dooley

*Department of Electrical Engineering and Automation, Aalto University, Espoo,
Finland and Empathic Building, Haltian, Helsinki, Finland*

Jaakko Ketomäki

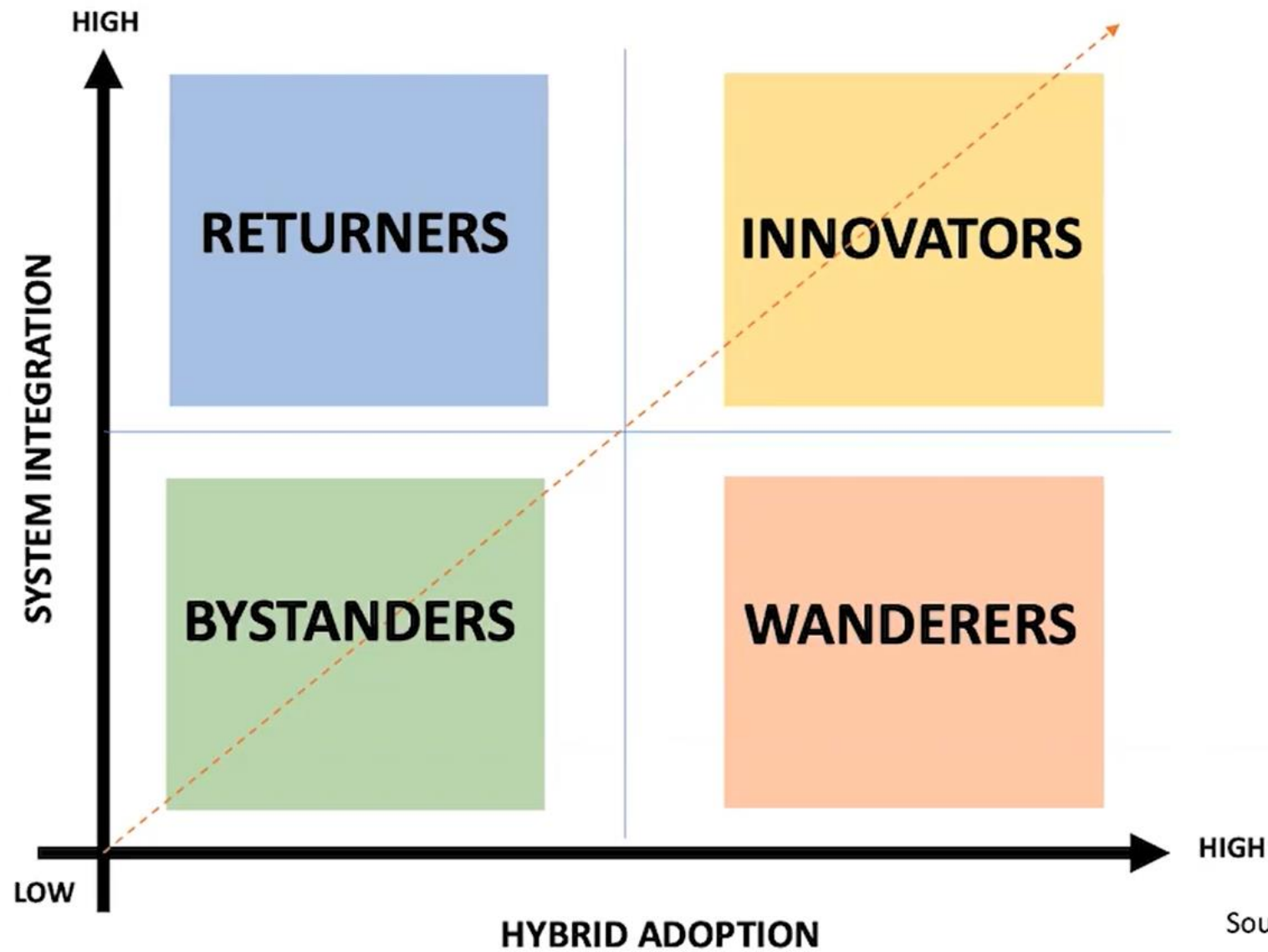
*Department of Electrical Engineering and Automation, Aalto University, Espoo,
Finland and Sustainable Construction and Real Estate, Motiva Ltd.,
Helsinki, Finland, and*

Heikki Ihasalo

*Department of Electrical Engineering and Automation, Aalto University, Espoo,
Finland and Innovations, Granlund Oy, Helsinki, Finland*

Received 6 April 2021
Revised 21 June 2021
Accepted 1 August 2021

Degrees of hybrid integration

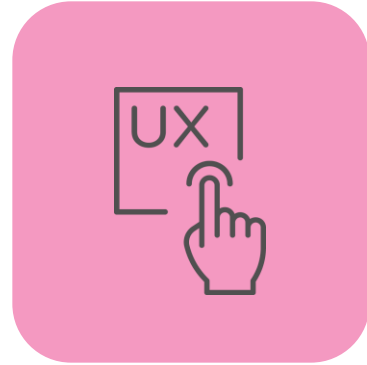


Source: WORKTECH Academy/Brivo

Targets



People Back



Enable New



Team Working



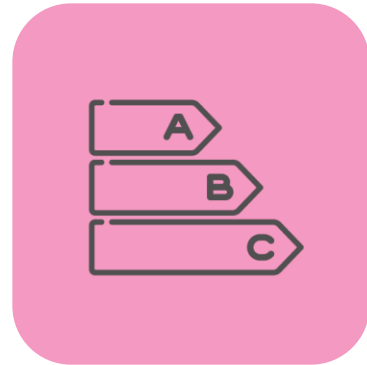
Build Community



Values



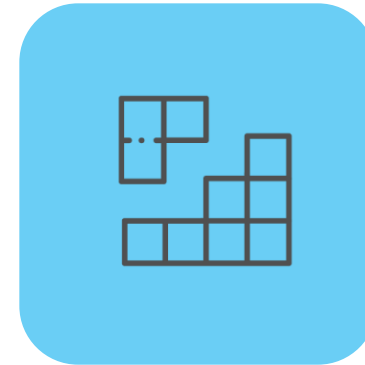
Space Costs



Energy Costs



Quick Deployment



Modular



Back Safely

No clear end in sight

- Perpetual Beta
- Uncertainty
- Reduce then Rearrange



What We Learned About Hybrid Work in 2022

Analysis by Sarah Green Carmichael | Bloomberg

December 29, 2022 at 8:35 a.m. EST

The Washington Post
Democracy Dies in Darkness



What We Learned About Hybrid Work in 2022

Analysis by Sarah Green Carmichael | Bloomberg

December 29, 2022 at 8:35 a.m. EST

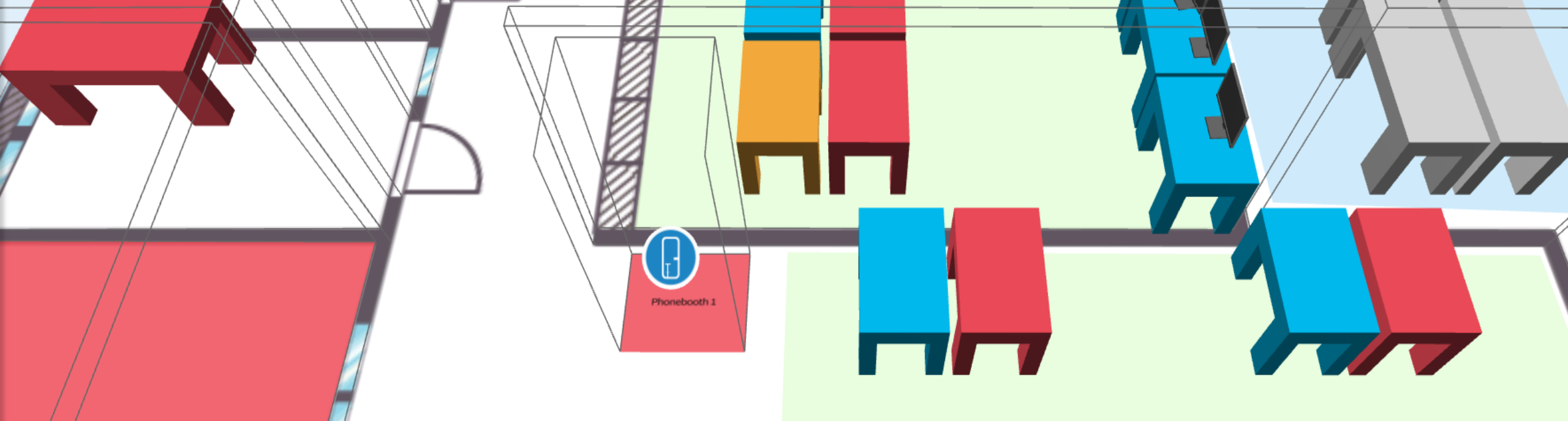


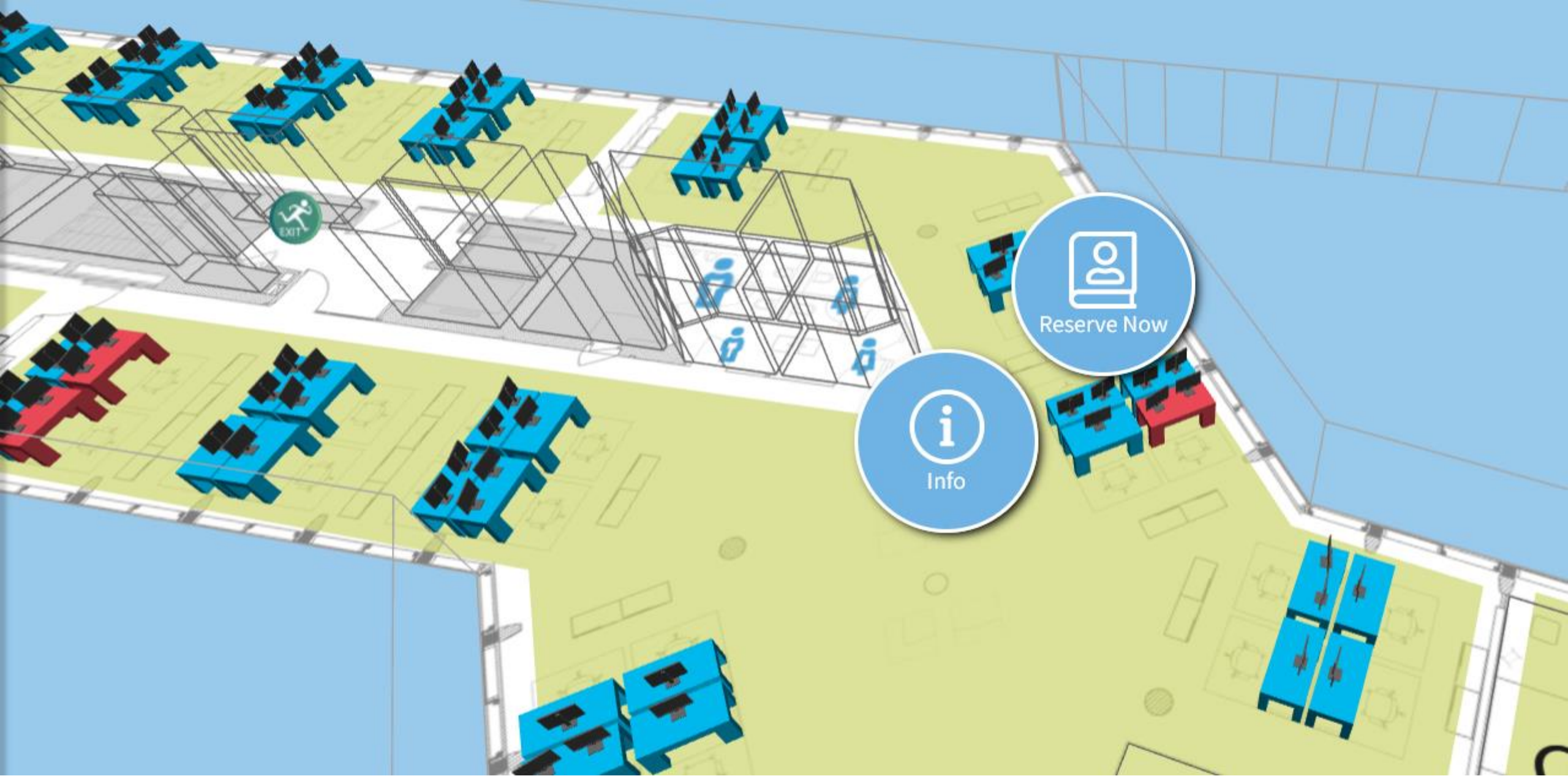
“One-size-fits-all arrangements don’t work”

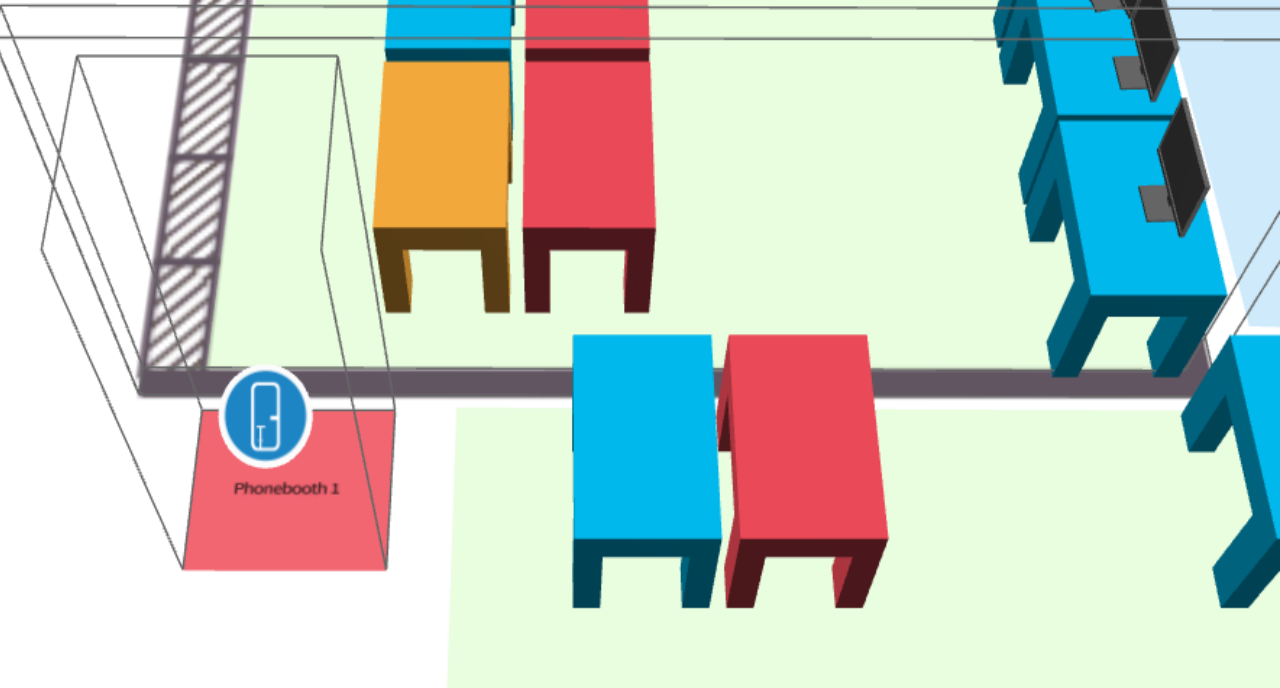
“We have learned a lot from our **experiments** this year, but companies are still in the early days of determining what works best for them”

Desk Booking

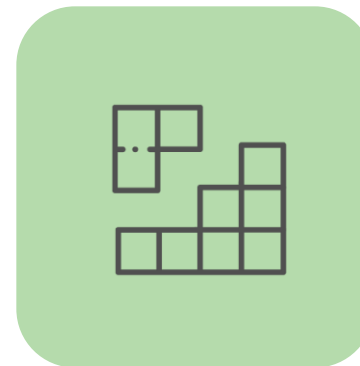


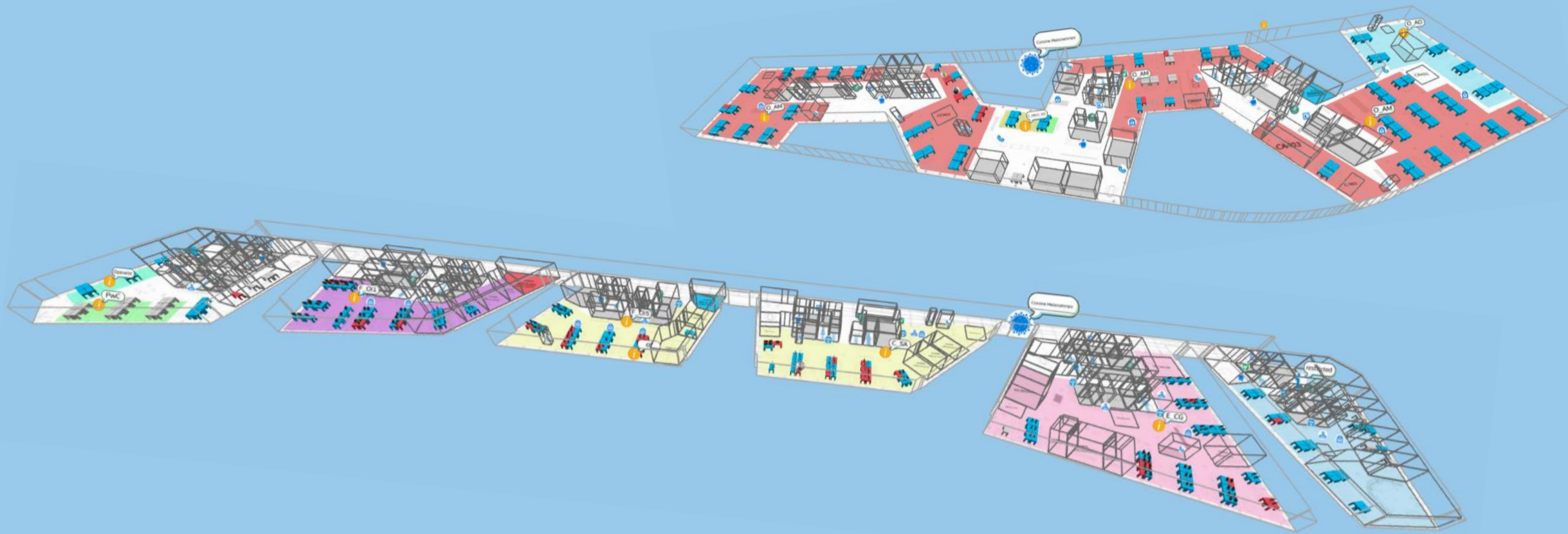






Departmental Zones









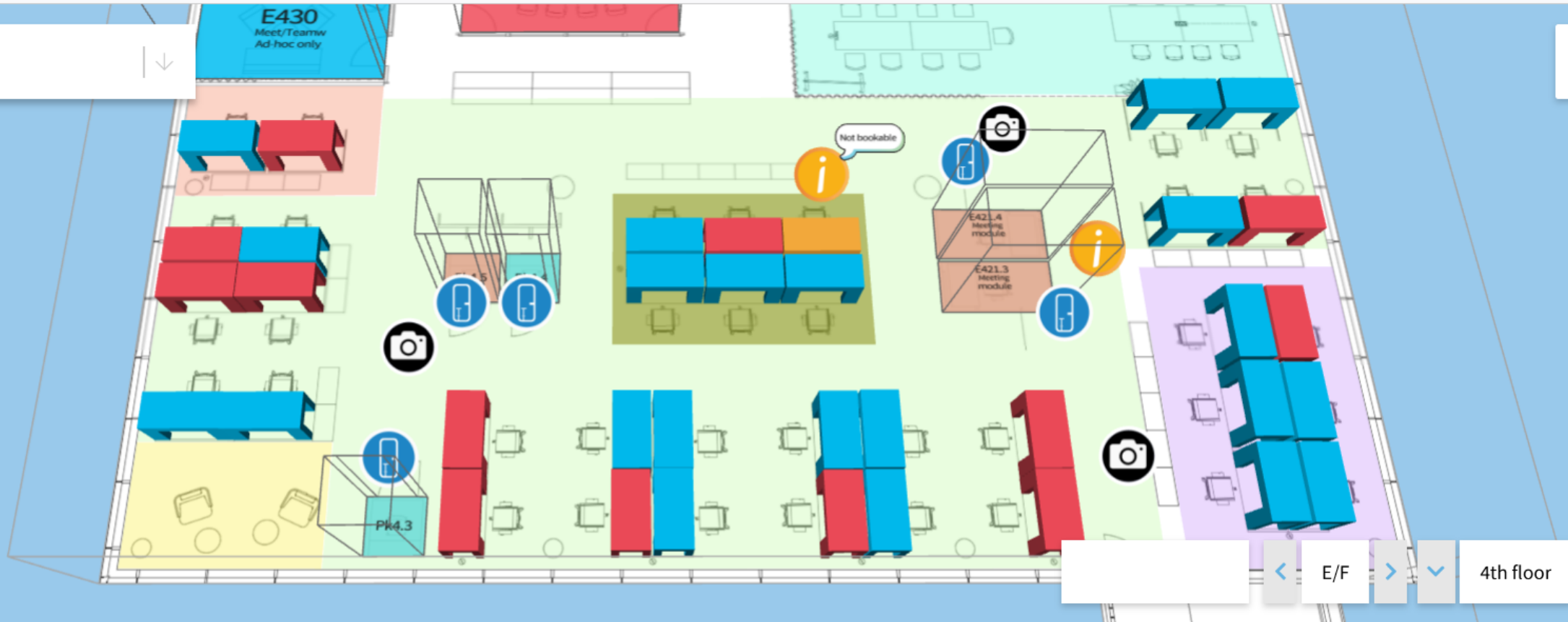
Office Floor 1

Show less

6 selected

| | | | | |
|------------------------------------|--|---|--|---|
| <p>or plan ✓</p> | <p>Info ✓</p> | <p>Zones ✓</p> | <p>Rooms ✓</p> | <p>Desks</p> |
| <p>plan and y exit markers</p> | <p>Show info markers such as printers, toilets, coffee machines etc...</p> | <p>Show different zones such as concentration, communication, lounge etc...</p> | <p>Show rooms and their reservation status. Local time: 17:58 (EET)</p> | <p>Show desk statuses. Once used, desks remain reserved for 2h until becoming free again</p> |
| | | <p>Collaboration Concentration</p> | <p>Free Reserved, unused In use Offline / Unknown</p> | <p>Free Reserve In use Offline /</p> |





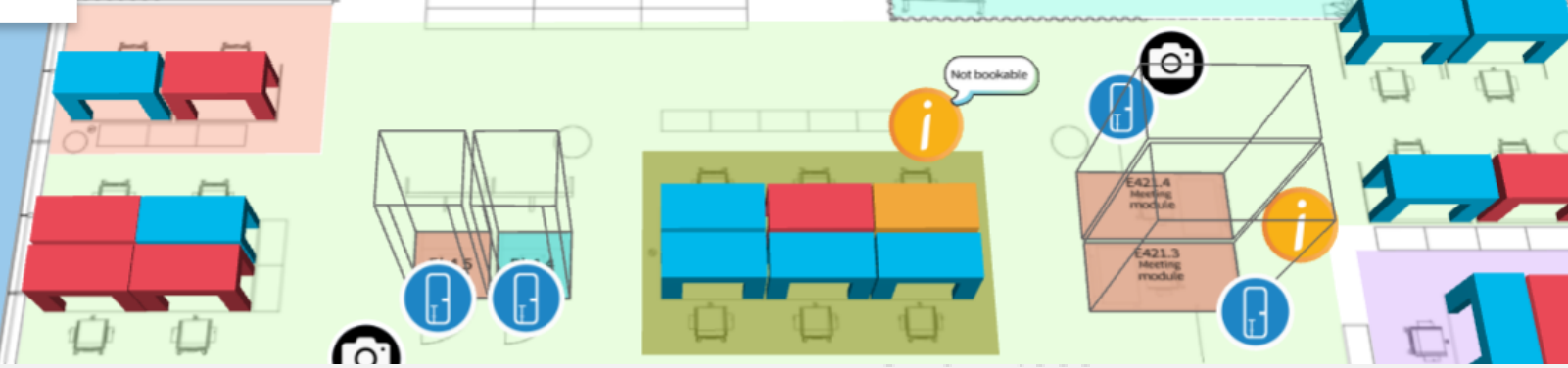
Show less

6 selected

- Floor plan** ✓
Floorplan and emergency exit markers
- Info** ✓
Show info markers such as printers, toilets, coffee machines etc...
- Zones** ✓
Show different zones such as concentration, communication, lounge etc...
 - Break area
 - Call area
 - Confidential corners
 - Drop in
 - Focus area
 - Not bookable
 - Teamwork clusters
- Rooms** ✓
Show rooms and their reservation status. Local time: **14:05 (EET)**
 - Free
 - Reserved, unused
 - In use
 - Offline / Unknown
- Desks**
Show desk statuses. Once used, desks remain reserved for **2h** until becoming free again



E430
Meet/Teamw
Ad-hoc only



Zones



Show different zones such as concentration, communication, lounge etc...

- Break area
- Call area
- Confidential corners
- Teamwork clusters
- Drop in
- Not bookable

E/F > 4th floor

floor plan

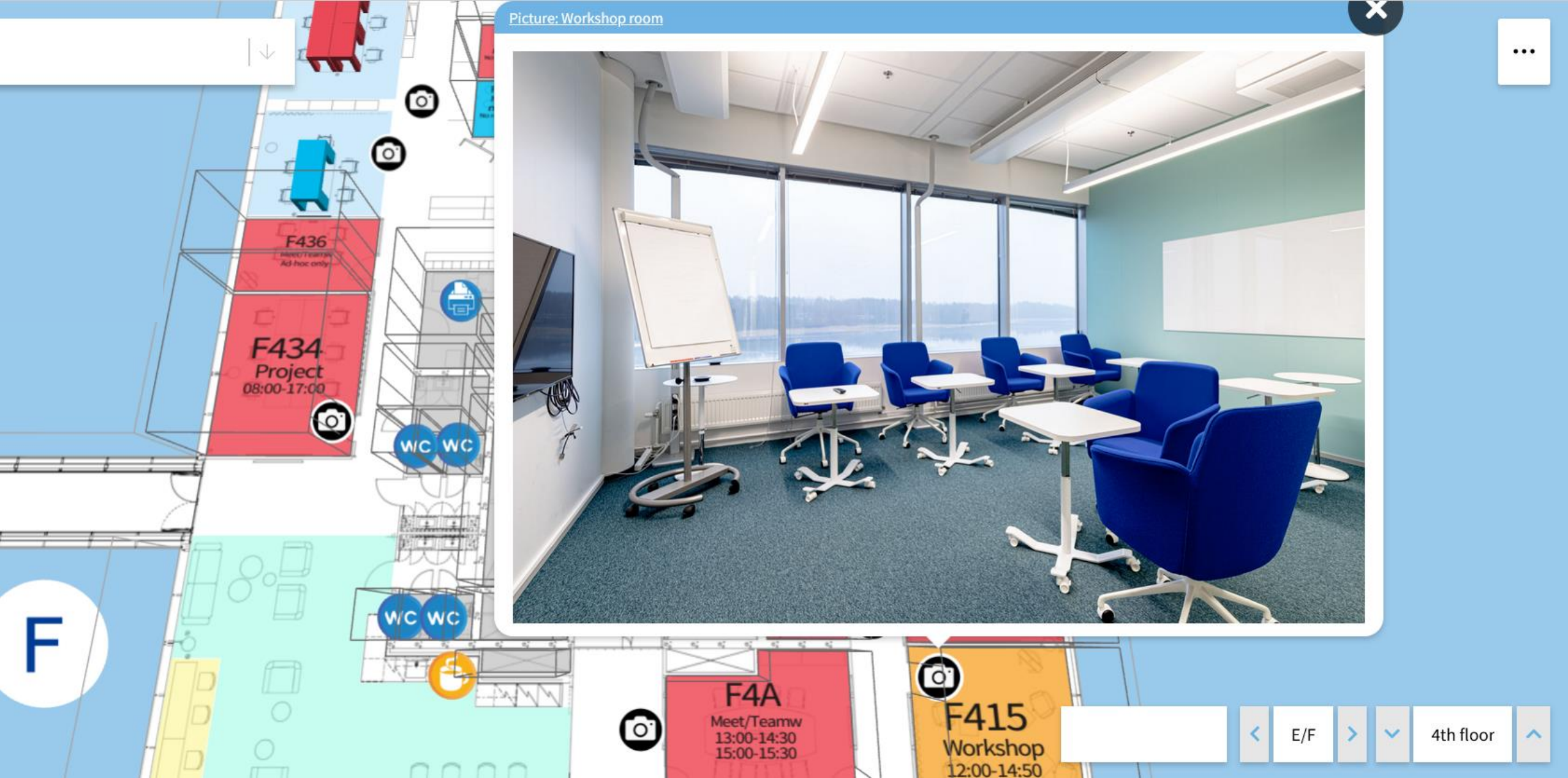
orplan and
ncy exit markers

Sh
su
to
et

Desks

Show desk statuses. Once used, desks remain reserved for **2h** until becoming free again

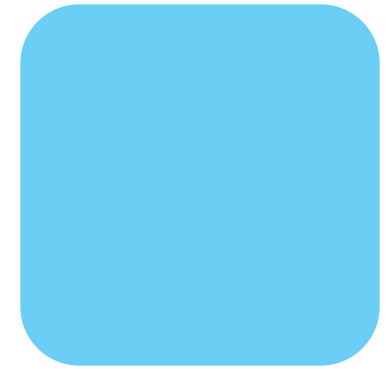




Picture: Workshop room



Open Area Sensors









Dr. Ken Dooley

CPO Empathic Building for Offices

Haltian

ken.dooley@haltian.com

Professor of Practice: Smart Buildings

Aalto University

kenneth.dooley@aalto.fi



empathic building[®]