

CommunityCare live25

BDC, London | 7-8 October

Exhibition and Sponsorship
Opportunities

Event Partner



Essex County Council

communitycarelive.co.uk

The Community Care Group

Established in 1974, Community Care has been providing the latest news, research, career opportunities and essential learning to the sector for 50 years. Although our products and service offerings may have evolved over time, our quest to inform, support learning and facilitate ongoing professional development remains at the forefront of everything we do.

“It was great to connect with different social care organisations, and learn new things. You can never learn too much.”

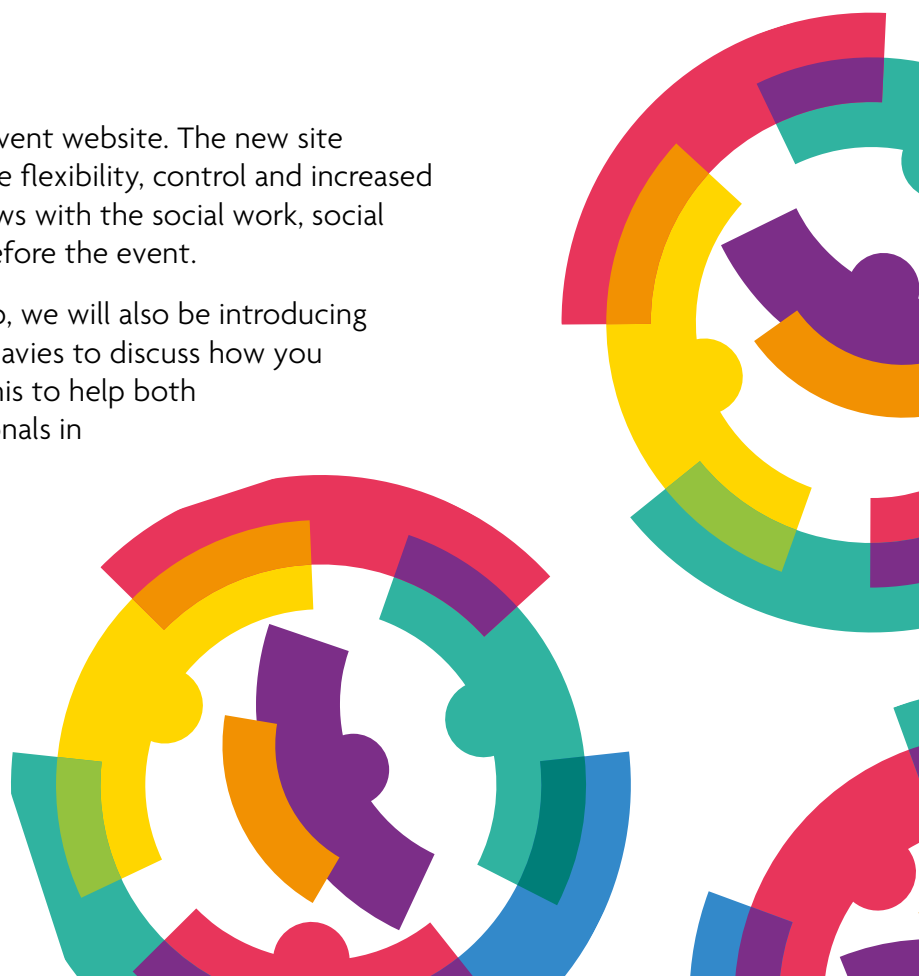
Community Care Live 2025

Launched in London 27 years ago, our annual flagship event, Community Care Live, is the UK's largest free to attend social work and social care event. On offer is a free expert seminar programme providing essential learning and training for social work and social care professionals, as well as occupational therapists and all students on both social work and occupational therapy degree courses. The programme is supported by an exhibition where delegates, exhibitors and speakers can network and share learning with other organisations within the sector including local authorities, residential care providers, suppliers, recruiters, the voluntary sector, NHS trusts and universities. In addition to the free seminar programme and exhibition we also offer a legal learning stream. These sessions offer the latest legal updates from some of the country's leading experts. A fee applies to reserve a place at these 8 sessions. We look forward to building on the success of Community Care Live in 2025 and beyond – and we very much hope you and your organisation will be there too.

New for 2025

This year we are excited to launch a new event website. The new site provides exhibitors and sponsors with more flexibility, control and increased opportunities to share information and news with the social work, social care and occupational therapy audience before the event.


As well as our very popular Well-being Hub, we will also be introducing a new Careers Hub. Please contact Nicky Davies to discuss how you and your organisation can be involved in this to help both students and qualified social care professionals in their career progression.



For more information contact:

 Nicola Davies

 nicola.davies@markallengroup.com

 07787 151949

Why Exhibit?

Community Care Live provides the opportunity for your organisation to engage with social work and social care professionals including team managers, heads of service, directors, principal social workers, senior practitioners, social workers, occupational therapists, workforce leads and students on social work and occupational therapy degree courses. While video calls and remote learning are very much part of our working lives now, there is no way to fully replicate the benefits of face to face interaction, learning and networking that this event provides.

Make sure your organisation is part of Community Care Live 2025 so you can:

- Be part of a key event in the social work calendar
- Network with key decision makers including directors and team managers
- Meet with an audience of highly engaged social work, social care and occupational therapy professionals
- Take advantage of face to face interaction within the social work and wider care sector at this essential learning event
- Position your organisation as a supporter of social work training, learning and career development
- Discuss any career opportunities directly with active and potential jobseekers whilst positioning your organisation as an employer of choice

Who's at the event?

- At Community Care Live 2024, 53% of delegates were from local authorities, with over 100 different local authorities represented
- Almost 20% of delegates hold senior titles including commissioners, heads of department, workforce leads, principal social workers and team managers
- Over 35 organisations supported Community Care Live 2024 including local authorities, charities, independent sector providers, social care suppliers, NHS trusts, book publishers and consultancies




“Great day, lots of amazing stalls with valuable information and resources.”

“Informative and interesting - a diverse range of exhibitors and presentations.”

For more information contact:

 Nicola Davies

 nicola.davies@markallengroup.com

 07787 151949

What does Community Care Live offer delegates?

Every year social work and social care professionals choose to take the time out of their busy schedules and join us at Community Care Live to:

- Attend the exhibition – make sure your organisation is there to meet and speak to delegates about your exciting plans and developments
- Seek new career and professional opportunities – if you're looking for the best employees or have further training and courses to offer, don't miss out on the chance to discuss these directly with potential candidates
- Learn from the informative sessions, masterclasses and debates, and listen to engaging speakers
- Join colleagues from the social work and care community as they come together from across the country all under one roof
- Contribute towards professional development – demonstrate how your organisation is committed to helping those in the sector reach their potential




“Excellent opportunity to meet colleagues and services from all across the UK.”

For more information contact:

 Nicola Davies

 nicola.davies@markallengroup.com

 07787 151949

How do I exhibit?

Community Care Live offers a wide range of options for your organisation, to suit both your budget and objectives. Packages range from full event sponsorship to single exhibition stands and everything in between. Our team will work with you, and give you the platform, to ensure your organisation's objectives are met. Exhibition spaces are limited so contact the team as soon as possible to discuss how the event can work best for you.

Example shell scheme stands and prices

2m x 2m shell scheme stand from **£2795 + VAT**

3m x 2m shell scheme stand from **£3815 + VAT**

4m x 2m shell scheme stand from **£4405 + VAT**

3m x 3m shell scheme stand from **£4620 + VAT**

6m x 3m shell scheme stand from **£8050 + VAT**

Prices correct as of January 2025

Included:

All shell scheme stands will include fascia and name board with exhibitor name and stand number, 1 x 5' fluorescent light tube per stand, carpeted floor, and 50-word profile on the event website.

N.B. Special discounted rates apply for registered charities, universities and book publishers – please get in touch for further details.

Recruitment consultancies please call for ratecard.

“**Energising environment filled with passion!**”

“**Engaging, informative and fun to be around so many likeminded professionals looking to expand their knowledge and network.**”



For more information contact:



Nicola Davies



nicola.davies@markallengroup.com



07787 151949

Enhance your presence at the event

There are a number of sponsorship and promotional opportunities available at Community Care Live 2025, including event guide advertising, seat drops, speaker opportunities, event host and sponsor packages. These provide an unrivalled opportunity to maximise your presence at the event ensuring your organisation is front of mind for all delegates. Find out more below, and contact Nicola Davies, Head of Partnerships and Events, who would be delighted to discuss these opportunities with you.

PRE-EVENT



Branding on communitycare.co.uk

Let our audience know you'll be at the event by taking advantage of discounted rates for online adverts on communitycare.co.uk when you sign up for an exhibition stand.

Price on application.



New event website

More opportunities to share information and news about your organisation with the social work, social care and occupational therapy communities before the event, including specific advertising spaces on the event website. Exhibitors and sponsors will be given more control over the content they share through individual exhibitor zones.

Price on application.

DURING THE EVENT



Event guide - new lighter version

The new lighter version of the event guide (printed version) will be given to all attendees for them to read and refer to both during and after the event. Placing an advert in the event guide is a simple but effective way of delivering and reinforcing a message to this engaged audience and encouraging visits to your stand. The guide will also be available online during the event.

Full page, full colour advert £1500 + VAT.



Sponsored speaker opportunity

A perfect opportunity for your organisation to position itself as a thought leader through hosting your very own one hour workshop, which will be integrated into the main seminar programme. Our producer will discuss the subject and content with you to ensure that it meets our educational learning criteria and maximises attendance.

Please note: limited opportunities remaining. Price on application.

“The exhibition was really good and the seminars were amazing I will definitely be coming back again next year.”

“Great to catch up with so many LA's and talk about how they are developing services.”

For more information contact:



Nicola Davies

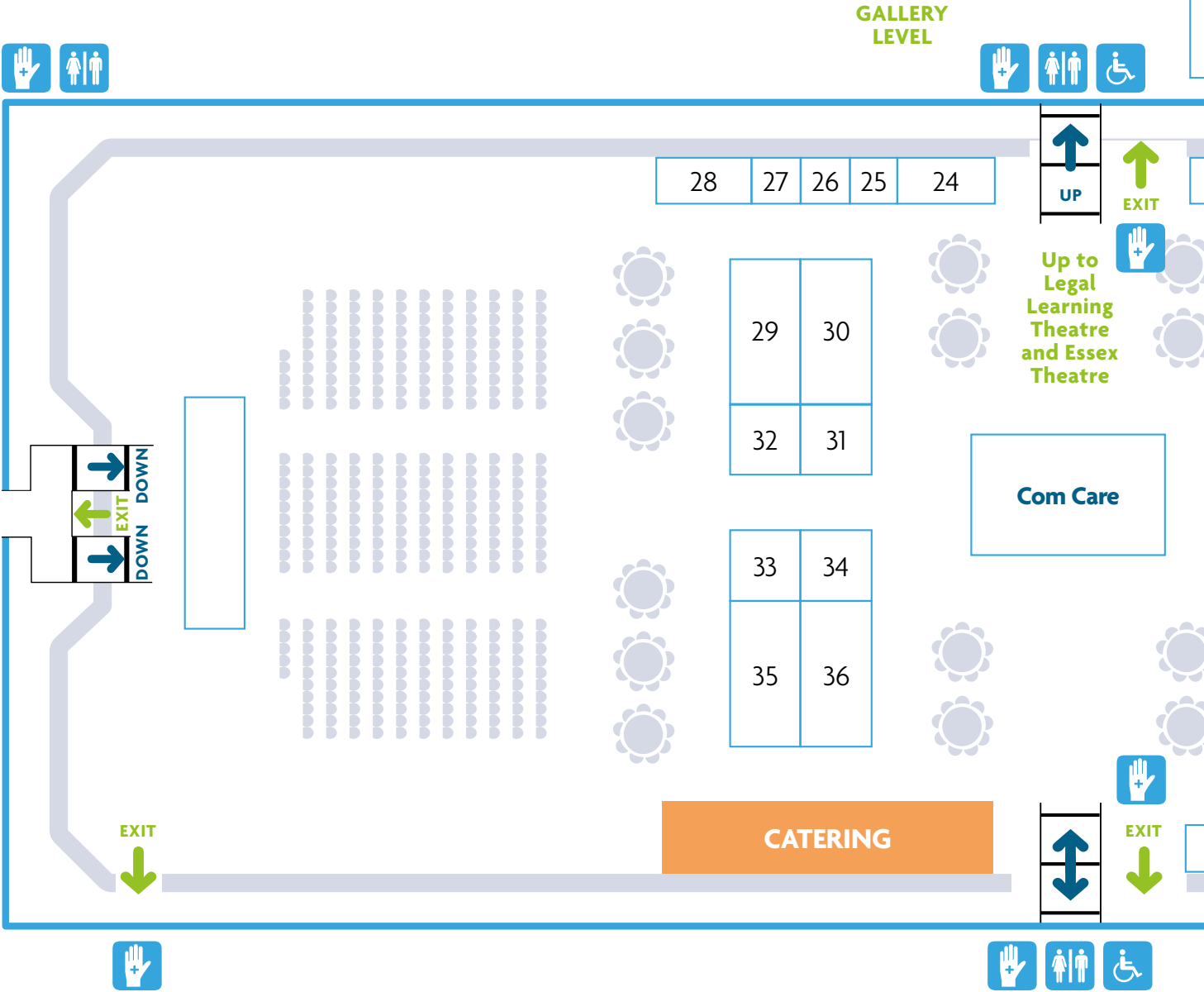


nicola.davies@markallengroup.com



07787 151949


Community Care Live 2025 Floor Plan



For more information contact:

 Nicola Davies

 nicola.davies@markallengroup.com

 07787 151949

Wellbeing Area

23 22 21 20 19 18

EXIT ↑

Essex County Council
13 14

17
16

11 12
10 8
9

SPEAKER LOUNGE

Careers Area

7 6 5 4 3 2 1

EXIT ↓

EXIT →



← MAIN ENTRANCE AT GROUND LEVEL



EXIT ↓



More from Community Care



Network

The networking platform for social workers



Jobs

The latest job opportunities within the social work sector



News

Providing practitioners and leaders with critical information



Learn

The online learning and practice resource for social workers

CommunityCare live25

BDC, London | 7-8 October

Event Partner



Essex County Council

communitycarelive.co.uk