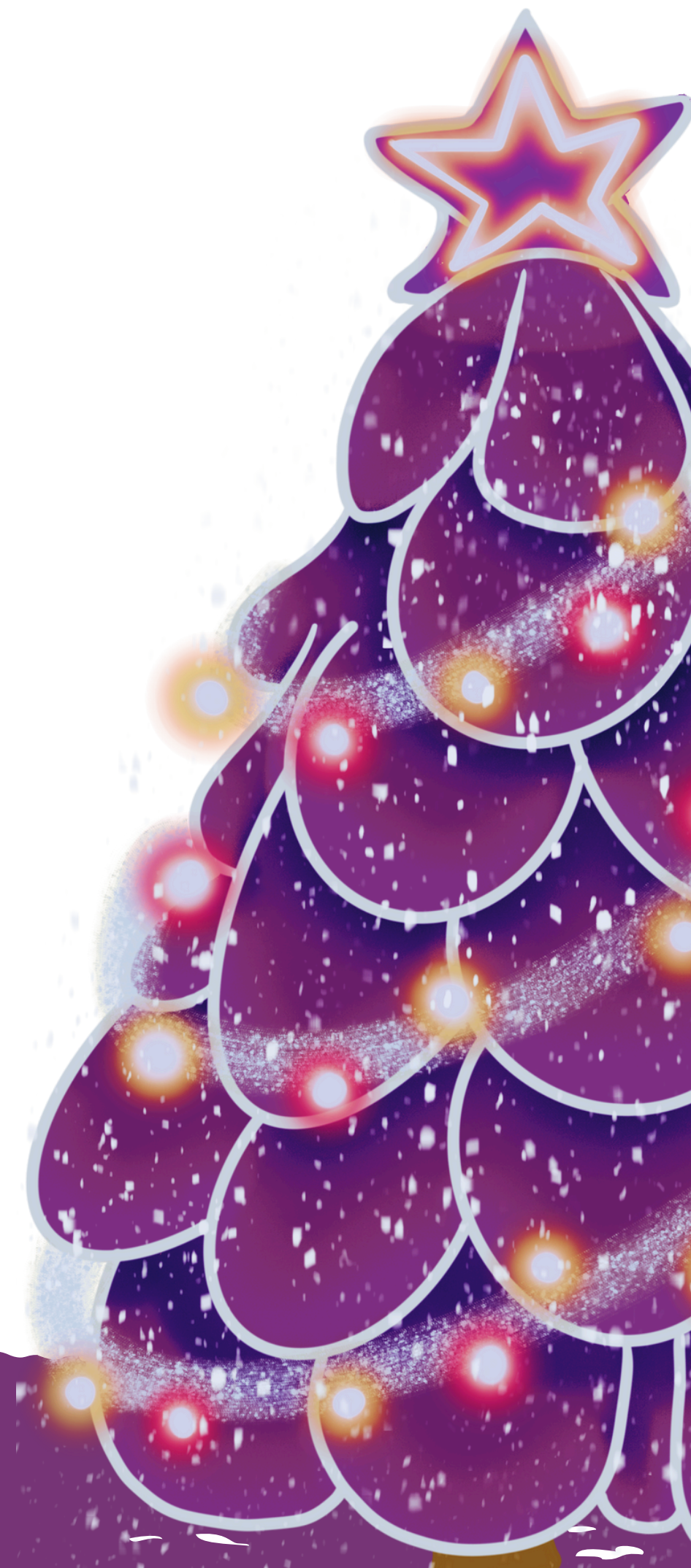




DONATE and help bring joy to elderly and vulnerable people at Christmas

Friday 6th December 2024

www.onedayatchristmas.com



What is it?

One Day at Christmas, organised by specialist events industry publisher Mash Media (and friends), serves as a Christmas party for elderly and vulnerable people across the UK. It is a chance for the events industry to give something back to a local community.

For one day each December, we re-create a Christmas party for the local community who might not be able to enjoy a proper Christmas day. We lay on the traditional Christmas food and drink as well as entertainment in the form of carol singing, bingo and numerous other Christmas themed games.



Check out the highlight video [here!](#)

Learn more: www.onedayatchristmas.com

Where is it?

There will be 7 events held on the same day on 6th December at the following venues:

- NEC Birmingham
- ExCeL London
- SEC Glasgow
- Farnborough International
- Business Design Centre London
- Manchester Central
- Coventry Building Society Arena

How can I Support?

Partner Package: £5,500 + VAT

- Tier one www.onedayatchristmas.com (50% bigger than benefactor)
- Tier one branding on pre-event adverts (50% bigger than benefactor)
- Tier one branding on on-site signage (50% bigger than benefactor)
- Opportunity for company representative to comment in One Day at Christmas Video
- Logo in One day at Christmas Video
- Priority mention and comment in Exhibition News press release
- Partner logo for internal and external communications
- Interview in Exhibition News about supporting the event
- Partners and Benefactors of ODAC get priority for team volunteering slots

Benefactor Package: £1,500 + VAT

- Tier two www.onedayatchristmas.com (50% bigger than supporter)
- Tier two branding on pre-event adverts (50% bigger than supporter)
- Tier two branding on on-site signage (50% bigger than supporter)
- Logo in One day at Christmas Video
- Mention in Exhibition News press release
- Benefactor logo for internal and external communications

Supporter/Individual Donation

- Mention in Exhibition News press release
- Supporter logo for internal and external communications
- Supporters and Individual Donors are allocated volunteer spaces based on availability.

Visit www.onedayatchristmas.com
or email sam@inflection-point.co.uk to learn more

