

SE

modulyss®

PRESS RELEASE

INTRODUCING “WORSHIP THE GROUND YOU WALK ON”: MODULYSS LEADS THE CHARGE IN SUSTAINABLE FLOORING SOLUTIONS.

Belgium, 4 April 2023 - In a world where sustainability is no longer optional but essential, architects and interior designers face the fascinating challenge of incorporating eco-friendly practices into their creations. modulyss, the premium brand under Belysse, has revolutionized the flooring industry by bridging Flemish tradition with sustainable innovation, showcasing their commitment to a circular economy with their Heritage and Artcore collections.

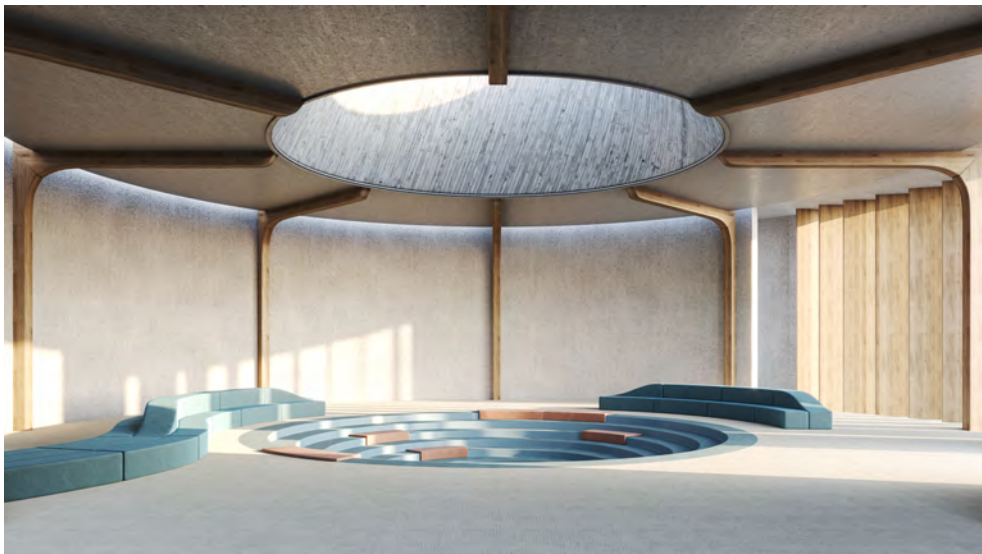
A CIRCULAR APPROACH TO FLOORING INNOVATION

The circular economy focuses on designing products that last, minimizing waste, and maximizing resource efficiency. As a result, businesses in the design sector are more aware of their responsibility to reuse, repair, and recycle materials throughout the production process. This mindset is at the heart of modulyss' approach to sustainable flooring solutions.

Marie De Laet, Sustainability Manager for Belysse and modulyss, says, "In committing to sustainability as a cornerstone of our brand, we are proud to offer a substantial range of Cradle to Cradle Certified® (C2C) offerings in carpet tiles." The C2C certification is an internationally recognized standard issued by the Cradle to Cradle Products Innovation Institute, with products assessed on five key areas: water and soil stewardship, clean air and climate protection, material health, product circularity, and social fairness.

MODULYSS: CHAMPIONING SUSTAINABILITY IN FLOORING

To meet the growing demand for sustainable flooring and acoustically efficient options, modulyss has developed a wide range of C2C Certified® products, including their comfortBack^{eco} backing solution, which is PVC and bitumen-free and can be disassembled and recycled into a first-grade new backing. ComfortBack^{eco} has been awarded a C2C Gold certificate, demonstrating modulyss' commitment to both sustainability and enhanced acoustic performance.



FLEMISH TRADITION MEETS SUSTAINABLE DESIGN: THE HERITAGE COLLECTION

Modulyss' Heritage collection draws inspiration from the rich history and culture of Belgium, with designs influenced by five typical Flemish landscapes. The Dune, Meadow, and Polder collections in the Heritage range feature Econyl yarn made from 100% regenerated nylon and hold either Gold or Silver C2C certification, depending on the selected colour.



ARTCORE: REWILDING INTERIORS AND ELEVATING SUSTAINABILITY

The Artcore collection takes modulyss' commitment to sustainability to new heights. With Cradle to Cradle Certified® Gold in all four patterned collections, Artcore rewilds the interior world by creating unique patterned transitions that reconnect people with nature, fostering balance and well-being.

Ruben De Reu, Product Director at Belysse and modulyss, emphasises, “As we most recently did with our Heritage and Artcore collections, we will continue to approach product development and new product design with C2C certification in mind, applying innovative strategies to the reuse and recycling of old materials.”

For more information, contact Lynn Van Acker at lynn.vanacker@modulyss.com.

Imagery Heritage: [click here](#)

Imagery Artcore: [click here](#)

ABOUT

About modulyss

Modulyss designs, manufactures, and supplies unique carpet tiles for the international commercial market, challenging perceptions and surpassing expectations while following ethical and environmental practices. Since its formation in 2010, the brand has been pushing towards a combination of creativity, functionality, and sustainability to make modular flooring that matches the distinctive character of a space. Modulyss is part of Belysse Group NV, a manufacturer of sustainable textile floor coverings for commercial and residential applications.

modulyss®

ABOUT

[modulyss.com](https://www.modulyss.com)