

5th February 2024
FOR IMMEDIATE RELEASE

Liang & Emil Unveils Eco-Conscious Furniture with Recycled Fabric Collection



Featuring the [Diva Dining Chair with Arms in Megan Oxide Velvet](#) and [Diva Dining Chair in Megan Mustard Velvet](#) upholstery

Liang & Emil, a leading name in luxury furniture design, proudly announces the launch of their new collection crafted using recycled fabric. This initiative underscores the brand's unwavering commitment to environmental responsibility and sustainability in every aspect of their business. Furthermore, Liang & Emil commits to expanding its recycled fabric collection, introducing new pieces consistently in the months ahead.

As part of their dedication to reducing environmental impact, Liang & Emil has integrated recycled PET (Polyethylene Terephthalate) fabric, commonly known as RPET, into their upholstered furniture line. RPET fabric is derived from recycled PET plastic, primarily sourced from discarded beverage bottles, and undergoes a meticulous process of collection, cleaning, and transformation into fibers. This eco-friendly approach not only repurposes waste but also significantly reduces the demand for new plastic production, minimises waste in landfills, and lowers the overall carbon footprint associated with manufacturing.

The adoption of RPET fabrics by Liang & Emil not only enhances sustainability efforts but also significantly contributes to environmental conservation. This innovative approach reduces CO² emissions by approximately 80% and conserves around 80% of energy compared to conventional polyester production methods. Building upon their prior commitment to sustainability, which includes the sourcing of FSC certified wood for their furniture, Liang & Emil remains steadfast in their dedication to eco-friendly practices. Moreover, the brand prioritises suppliers who share their values and commitment to sustainability, ensuring a cohesive approach to environmental responsibility throughout their supply chain.

"With the launch of our recycled fabric collection, we are proud to offer our customers furniture that seamlessly blends style with environmental consciousness," said Frank Emil, Creative Director and Co-founder of Liang & Emil.

The launch of Liang & Emil's recycled fabric collection represents a significant milestone in the furniture industry's journey toward sustainability. By embracing innovative materials and manufacturing processes, Liang & Emil is paving the way for a more environmentally conscious future, one piece of furniture at a time.

Explore all of Liang & Eimil's Recycled Fabric Collection

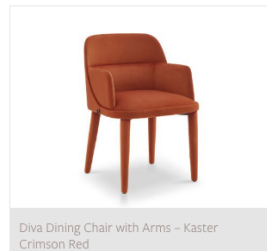
<https://www.liangandemil.com/product-category/sustainable-collection/>



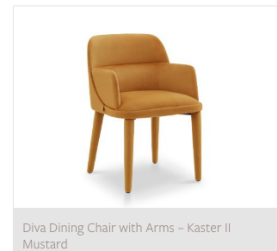
Diva Dining Chair – Kaster Crimson Red



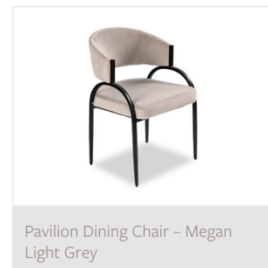
Diva Dining Chair – Kaster II Mustard



Diva Dining Chair with Arms – Kaster Crimson Red



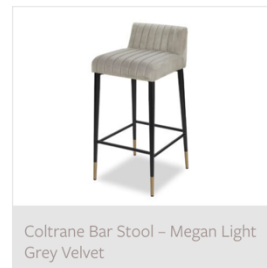
Diva Dining Chair with Arms – Kaster II Mustard



Pavilion Dining Chair – Megan Light Grey



Cyrus Stool – Megan Light Grey



Coltrane Bar Stool – Megan Light Grey Velvet



Jagger Dining Chair – Megan Light Grey Velvet (set of 2)

Pricing:

[Diva Dining Chair – Megan Oxide Velvet](#)

RRP £560 excl. VAT

[Diva Dining Chair – Megan Mustard Velvet](#)

RRP £572 excl. VAT

[Diva Dining Chair with Arms – Megan Oxide Velvet](#)

RRP £660 excl. VAT

[Diva Dining Chair with Arms – Megan Mustard Velvet](#)

RRP £676 excl. VAT

[Pavilion Dining Chair – Megan Light Grey](#)

RRP £562 excl. VAT

[Jagger Dining Chair – Megan Light Grey Velvet \(set of 2\)](#)

RRP £735 excl. VAT

[Coltrane Bar Stool – Megan Light Grey Velvet](#)

RRP £443 excl. VAT

[Cyrus Stool – Megan Light Grey Velvet](#)

RRP £437 excl. VAT

Hi-Res Images:

<https://www.dropbox.com/scl/fo/bwsigzp70ipnqcppk8l9f/h?rlkey=p55uq1p94b844un008r2hku43&dl=0>

To gain access to Liang & Eimil's extensive collection of design pieces, become one of their exclusive trade account partner by contacting trade@liangandemil.com

About Liang & Eimil

Liang & Eimil is a leading name in the world of interior furnishings, known for its exquisite designs, quality craftsmanship, and dedication to innovation. With a focus on modern elegance and timeless sophistication, Liang & Eimil offers a wide range of furniture, lighting and home accessories that reflect a sense of individuality and style. Established in 2011, Liang & Eimil has quickly become a preferred choice for discerning customers seeking high-end furniture solutions for residential and hospitality projects.

www.liangandemil.com

[@liang and eimil](#)

For press enquiries, please email Ai Pheng YEAP at aipheng.yeap@liangandemil.com