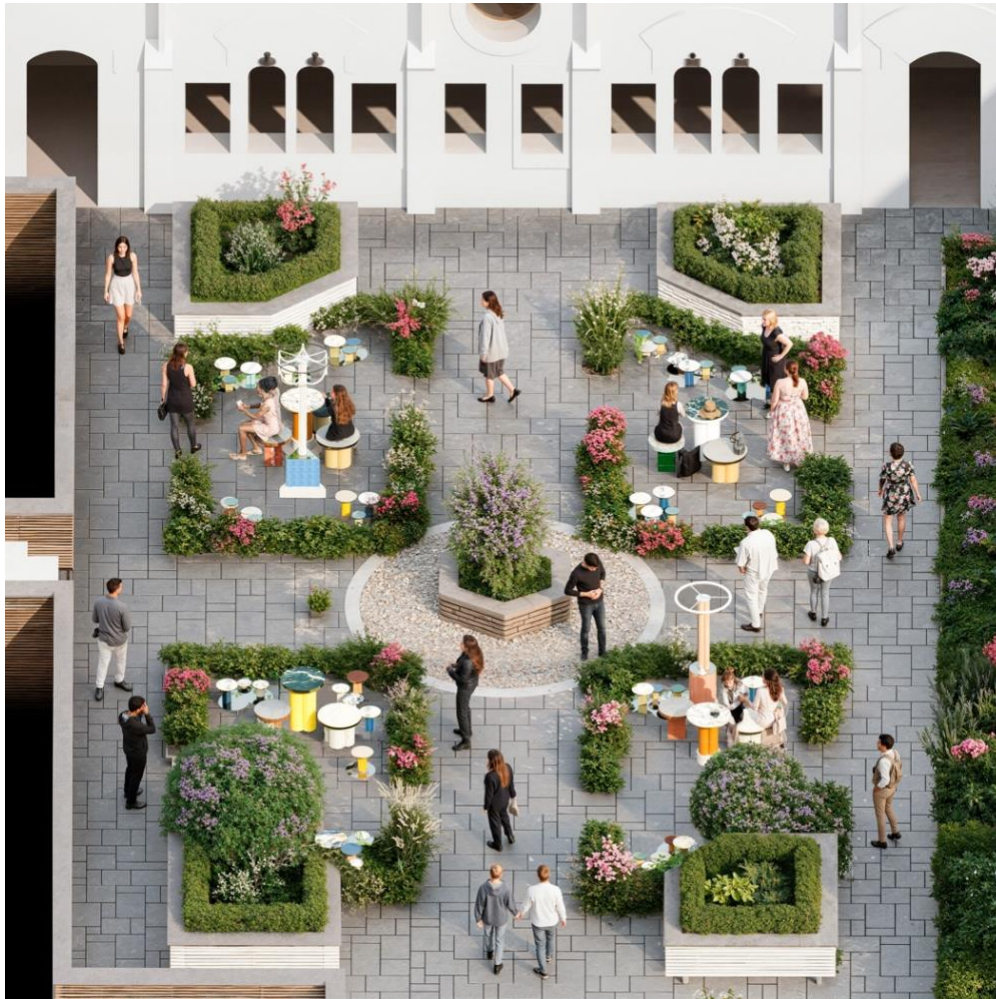




**Europe's Design Heavyweights Descend on EC1 for  
CDW's Landmark 15<sup>th</sup> Edition**  
19 - 21 May 2026



The Secret Garden made by Tile of Spain

As [Clerkenwell Design Week](#) (CDW) marks its 15<sup>th</sup> anniversary this May, the festival welcomes design collections from across Europe. Spanning six countries – from Spain, Italy and Norway to Germany, Austria and the UK – this year's line-up brings dozens of international brands and studios to EC1, making CDW 2026 the most wide-ranging showcase of overseas design the festival has ever staged.

## Spain celebrates contemporary design

CDW 2026 will be the most expansive showcase of Spanish design yet seen in EC1 with 27 brands taking part.

INTERIORS FROM SPAIN has appointed designer Tomás Alonso to transform new CDW venue, the 16th-century Museum of the Order of St John, into **El Salón**, an immersive installation set within the museum's atmospheric Chapter Hall. Produced in partnership with design journal *Disegno*, it brings together a curated selection of pieces including the Baleira lighting collection, also designed by Alonso for **a·emotional light**; the You and Me Monochrome ping pong table by **RS Barcelona**; modular acoustic polyester panels by **Ideatec**; the Oasis bathtub by **Sanycces**; latticed exterior stoneware screens by **APE Grupo**; and rammed earth tiles by **Huguet**. El Salón will also unveil three new exclusive product launches – Mediterranean Collection, a series of handcrafted lights by Yonoh Studio for **BPM Lighting**; the lightweight, durable and stackable KLOK Chair by Stephen Philips for **Sellex**, and a new version of the Senso flexible seating system by Mario Ruiz for **Joquer**.



New venue, The Museum of the Order of St John (left) will host El Salón; the KLOK Chair (centre) from Sellex; Senso seating from Joquer (right)

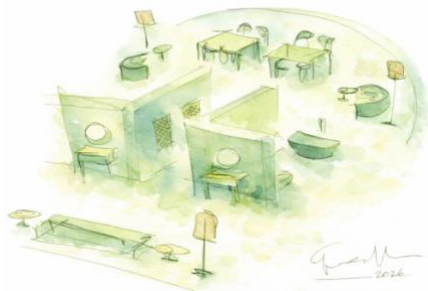
**Tile of Spain** has commissioned architecture studio LA ERRERÍA to transform the garden of the Order of St. John into The Secret Garden, an open and welcoming space that encourages visitors to wander, pause and linger in a space designed for contemplation and conversation. Inspired by Oscar Wilde's celebrated play *The Importance of Being Earnest*, it consists of four parterres, each inspired by one of the seasons. Spanish ceramics from brands **Adex**, **Cevica**, **Cifre Cerámica**, **Cristacer**, **Decocer**, **El Barco**, **Harmony**, **Inthetile**, **La Platera**, **Porcelanosa**, **STN Cerámica**, **Undefasa** and **WOW Design** are incorporated into the installation, shaping furniture and sculptural elements that experiment with a range of finishes, colours and textures.

For the second year running, ANIEME, the Spanish Association of Furniture Manufacturers, and ICEX Trade and Investment present **The Spanish Collection** at CDW, transforming the evocative historic spaces of The Charterhouse with collections of furniture, rugs and home textiles defined by refined aesthetics, material richness and fluid forms. In the Great Hall, pieces by **Ezpeleta**, **Expormim** and

**Gandía Blasco** will be on display, and **Naturtex** launches its new natural herringbone sisal product Ciudadela which is available as a rug, wall-to-wall carpet, runners or stair applications. The collection continues in the Old Library with pieces by **Crevin**, **Omelette Editions**, **Rols Carpets** and **SKLD Studio**.

Spanish brands will be exhibiting across more CDW venues this year. The Church of Design will showcase **Kave Home**; **IB Connect** will appear at Interior Hardware; and the showrooms of **Actiu International**, **Andreu World**, **Forma 5 & esPattio**, **Ondarreta** and will welcome visitors throughout the three days of the show. **Cosentino** will unveil two launches set to redefine its world of surfaces: Nomak, a new collection of carbon-neutral ultra-compact surfaces and **Éclos®**, an innovative mineral surface for kitchen and bathroom worktops.

### Italy showcases luxury, hospitality, ceramics and stone



Left to right: Giulio Cappellini's design for The Italian Hospitality; Kubic glass washbasins by ARTELINIA; MILANO radiator by TUBES; steel panels engraved with Gingko leaves by Caino Design

The Italian Trade Agency (ITA) returns to CDW for the fourth consecutive year, introducing around 40 furniture, interior design and surface materials companies to the dynamic UK design market with three distinct activations.

This year, ITA has partnered with prestigious international design magazine *Interni* and appointed architect Giulio Cappellini – Design Ambassador of the 2026 Italian Design Day – to curate **The Italian Hospitality** at The Luxury Edit at Haberdashers' Hall. This sophisticated installation will be furnished with two eye-catching products from **ARTELINIA** - the Plissé shelving system and Kubic geometric glass washbasins designed by Cappellini himself. It will also feature free-standing, sculptural MILANO radiators by **TUBES**; Nuvola floorlamps by **Siru** which merge Murano glass with metallic cage-like structures; a customised bathroom by **RELAX DESIGN**; and decorative stainless-steel panels engraved with Gingko leaves by **Caino Design**.

As Cappellini himself describes it, the work "represents a lounge furnished with Italian-made pieces, where industrial products coexist with handcrafted items, showcasing the expertise and quality of Italian production. The space is designed in shades of green combined with neutral tones and refined materials - an environment to admire and experience."



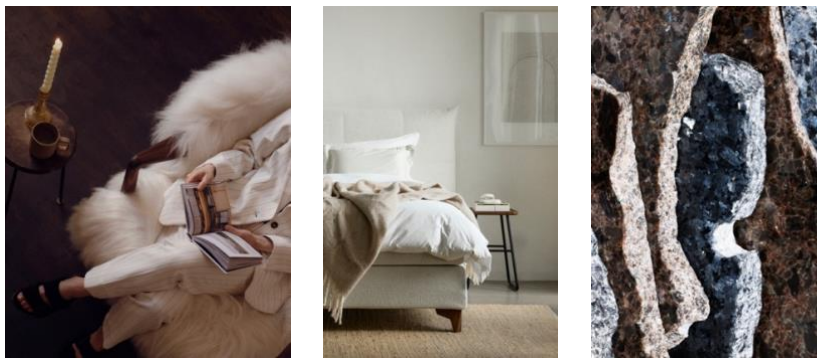
Three Italian launches: Saxum tiles from CASALGRANDE PADANA (left); Mutaforma modular light by OliveLab (centre); Marble Surfaces by DOMOS DESIGN (right)

**The Italian Collection** brings eight additional brands to The Luxury Edit including high-end commercial seating brand **SITIA**; customised bathroom furniture suppliers **TAILORMADE STOCCO**; clay cladding experts **FORNACE BRIONI**; and **BAUCE BRUNO** which produces skirting in marble and granite. **DOMOS DESIGN**, which specialises in processing natural stone, launches three new high-end collections - Marble Surfaces, The Wood Stone Collection, and Breccia Veneziana. Mutaforma, a modular, adjustable ceiling lamp designed by Giulia Liverani for **OliveLab**, also makes its debut.

At St John's Square South, the **Ceramics of Italy** pavilion celebrates new surface collections from twelve brands including **SIMAS**, **LA FAENZA**, **Veniston**, **TONALITE**, **DECORATORI BASSANESI** and innovative ceramics brand **CASALGRANDE PADANA** which will launch its Saxum collection of porcelain stoneware tiles exclusively at CDW.

Across Clerkenwell, Italian brands including **ETHIMO**, **Moroso**, **Marazzi**, **MIRAGE**, **True** and **Iris Ceramic Group** will open their showrooms to visitors.

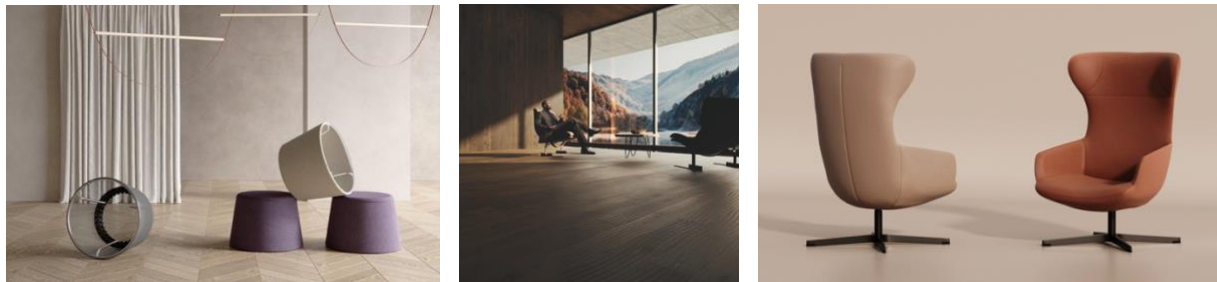
### Norway debuts at CDW



Eikund Fluffy chair (left); Jensen Beds (centre); Lavikite and Anorthosite from Lundhs (right)

Norwegian Collection brings together four pioneering brands to present **The Norwegian Boutique Bedroom** within the atmospheric cloister of the Church of Design, exploring material truth, heritage and the art of restorative interiors. Revived mid-century classics from **Eikund**, including Fredrik A. Kayser's Fluffy chair sit alongside world-leading sleep solutions from **Jensen Beds**. Larvikite and Anorthosite, Norwegian stones from **Lundhs**, offer tactile coolness contrasting with the enveloping warmth of ethical, circular premium goose down from **Norsk Dun**. Together, the collection presents a deeply considered vision of Scandinavian comfort and longevity, where craftsmanship, sustainability and natural materiality combine to define a new standard for the restorative interior.

### German precision and practicality



Three German launches: Krall + Roth's SINUX foamless seating (left); Parador's Harmonia flooring (centre); KUSCH+CO's Lupino Lounge (right)

**The German Collection** at Catapult on Sekforde Street focuses on practicality and high-spec engineering, presenting PURLINE polyurethane flooring from **wineo**; shading solutions from **SUNDRAPE**; flame-retardant textiles from **Indorama Ventures**; smart home systems from **JUNG**; high-quality kitchens from **EXPRESS KÜCHEN**; and accessibility systems from **HEWI**. Furniture brands range from commercial suppliers **BRUNNER** and **THONET** to high-end, heavy-duty table manufacturer **TREWA**. Textile engineers **KRALL + ROTH** launch their SINUX range of foamless soft seating (pictured above) at CDW this year. **Dresden Zimmer**, a collective of seven small and medium-sized businesses, represents the more artisanal aspect of German design.

German flooring brand **Parador** will unveil its new engineered wood collection Harmonia (pictured above) at its showroom on Great Sutton Street in EC1; **KUSCH+CO**, which specialises in solutions for healthcare facilities and passenger terminals, introduces its new Lupino Lounge (pictured above); and office furniture provider **Sedus** launches its se:cove lounge chair and its S<sup>3</sup> Hub Pro secure storage solution.

### Austrian craft and creativity

ADVANTAGE AUSTRIA showcases the creative power of craftsmanship at The Crypt in The Order of St John with **The Austrian Collection**. Tailormade timber flooring from **AUSTRIAWOOD** and **mafi**, and elegant furniture from **HUSSL** and **BRAUN LOCKENHAUS** offer timeless elegance, while sculptural lights from **STUDIO PALATIN** and handcrafted pieces by **WOKA LAMPS** demonstrate artisanal ingenuity. **Kohlmaier's** MEZZAFERAS range of spherical seating and tables is a nod to the distinctive designs of the 1960s.

### A decade of British design

St James's Church has hosted the **British Collection** at CDW for ten years, displaying contemporary classics from home-grown brands including **Another Country; Benchmark; Christopher Wall Design; DARE; Dovetailors; Goldfish Furniture; Goldfinger; Heals; Hitch Mylius; Leandesk; Matthew Burt; Origin; Souplesse Designs; Torc Pots; VERY GOOD & PROPER;** and **Hill Cross Furniture & Tamarisk Designs**. Building on the success of his video conferencing table, **James Burleigh** is unveiling new designs with more organic forms that enhance user comfort around a screen, while **Barnby Design** presents the new Clayden Console Table (pictured below), crafted from sustainably sourced oak. **Fox & Furb Design Studio** introduces its typographically inspired Sit Chair (pictured below), and the new Woody soft seating chair and sofa from **ob&b** will also launch exclusively at CDW. Design studio **Spared**, has created an installation at the British Collection that reimagines site-specific, post-consumer waste into new prototype tables that explore emerging material possibilities.



Three British launches: Fox & Furb's Sit Chair (left); Clayden Console by Barnby Design (centre); Deadgood's Lollipop Chair (right)

Many British brands have spruced up their showrooms across EC1 to showcase new and established products and collections. Premium design-led furniture brand **Nth Degree** opens its brand-new showroom, launching the Microskin Edition of its Pietra Collection which is engineered specifically for outdoor living. **Viaduct** unveils its new 454 Chair, and **Deadgood** introduces two new products – its HB Table inspired by the sharp lines of a classic pencil, and its graphic, bold and unapologetically fun Lollipop Chair (pictured above).



Clerkenwell Design Week 2026 takes place across EC1, London, from 19 - 21 May. More details about the festival will be announced in due course. For more information, please visit [clerkenwelldesignweek.com](https://clerkenwelldesignweek.com) – registration is now [open](#).

-ENDS-

#### PRESS CONTACT

For press enquiries, please contact Belinda Fisher, Berna Sermet and Jeroen Bergmans at Friends & Co: [cdw@friendsandco.co.uk](mailto:cdw@friendsandco.co.uk).

Press registration: please click [here](#)

#### NOTES TO EDITORS

##### Clerkenwell Design Week, 19 – 21 May 2026

Website: [clerkenwelldesignweek.com](https://clerkenwelldesignweek.com) | Instagram: [@clerkenwelldesignweek](https://www.instagram.com/clerkenwelldesignweek)

X: [@cdwfestival](https://twitter.com/cdwfestival) | Facebook: [@clerkenwell.design.week](https://www.facebook.com/clerkenwell.design.week) | Hashtag: #CDW2026

#### VISITING INFORMATION

- Visitors can register for their [FREE festival passes](#) now.
- All visitors require a visitor badge to access the exhibition venues and showroom events.
- Exhibition venues are open **10:00 – 18:00** on **Tuesday**, **10:00 - 21:00** on **Wednesday**, and **10:00 - 17:00** on Thursday. Showroom opening hours vary.
- Closest underground stations: Farringdon and Barbican
- Bus routes: 19, 341, 38, N19, N38, N41, 55, 48