



EasySeam[®] Roof and Wall systems

Contemporary, robust and durable solution
that's quick and easy to install



Vertix[®] Systems. Engineered for life

About Vertix[®] Systems

Based in Monmouth, South Wales, Vertix Systems manufactures a range of metal standing seam systems for roof and wall applications. Vertix EasySeam Roof and Wall Cladding Systems come with quality, durability and sustainability built in and are backed up with expert technical support and responsive customer service. They are the ideal choice for new and refurbishment projects and are suited to a wide range of building applications which include residential, commercial, education, healthcare and leisure.

Why choose us?

Expert technical support

Vertix Systems has a professional team with over 15 years experience in the metal standing seam market and extensive steel roof and wall cladding experience. We can offer outstanding technical support and are on hand to provide advice and guidance to help ensure you get the very best roof and wall cladding solution for your needs and aesthetic requirements.

Our expert team can help with:-

- Material selection.
- Detailing for specific areas such as windows, flues, eaves, verges, soffits and fascias.
- Insulation build-ups to achieve specific U value ratings.
- Condensation risk analysis.
- Installation advice.

We can also assist with specific technical questions and provide practical support.



Quick and responsive service

We know that building projects can be challenging and our aim is to make specifying and buying Vertix EasySeam Roof and Wall Cladding Systems as easy as possible. Our lead time for manufacture can be as little as 2-3 weeks from order placement on stocked colours. If your project requires additional items or replacements, the team will prioritise your request once the order has been received to avoid/minimise any delays in your project.

Delivery & Logistics

We can provide delivery to any location in the United Kingdom. Depending on your project size, we provide flexibility in our delivery service to accommodate phased deliveries, aligned with your installation schedule. If you are local or have access issues at your site you can arrange to collect your order directly from our production facility in Monmouth.

Choice of material supplier

Depending on building application, we can offer pre-finished steel material from Tata Steel; Colorcoat Prisma and Colorcoat HPS200 Ultra and SSAB; GreenCoat Pural BT, giving you the option to select the finish of your choice. We stock the most popular colours and can order additional colours from their standard colour cards on request.

For individual residential dwellings or homes, we exclusively supply Tata Steel Colorcoat® branded products; Colorcoat Prisma® and Colorcoat HPS200 Ultra®. When used as part of a standing seam roof or wall cladding system for residential dwellings or homes in the UK and Ireland, both products benefit from the free 25 year Confidex® Home Guarantee issued directly to the homeowner by Tata Steel. In the unlikely event of a coating failure, Tata Steel can be contacted directly, meaning a prompt response in the event of a claim.

Range of profiles and widths

We offer a choice of 4 different standing seam profiles for roofs and 3 for walls, all of which are available in 300mm and 500mm widths.

Full kit of parts

We know that every part of a roof and wall system from the smallest fixing to the breather membrane and ancillaries such as eaves, verge flashings and sealants play a key role in delivering a safe and robust solution that achieves the desired aesthetics. Vertex EasySeam Roof and Wall Cladding Systems are manufactured to order at our Monmouth site and include a kit of parts for ease of purchase and peace of mind. You also have the option to order soffits, fascias, gutters, and downpipes from Vertex Systems to complete your project and ensure every element works in harmony.

WWW.VERTIX.SYSTEMS

Sustainable design & manufacture

Vertex EasySeam Roof and Wall Systems are manufactured in Monmouth, South Wales, reducing transport miles and the carbon emissions associated with this.

Bill of Materials (BOM)

When you place an order, Vertex Systems will provide a full complimentary bill of materials (BOM) that identifies every part required for a given roof size, pitch and wall dimension, simplifying the order process.

Manufactured to BS EN 14783:2013

Vertex EasySeam Roof and Wall Cladding Systems are fully supported standing seam offerings, meaning they do not span between purlins. EN 14783 is the CE mark for this category of roof or wall cladding system, which needs to be installed on top of a hard surface.



Part of Resource group

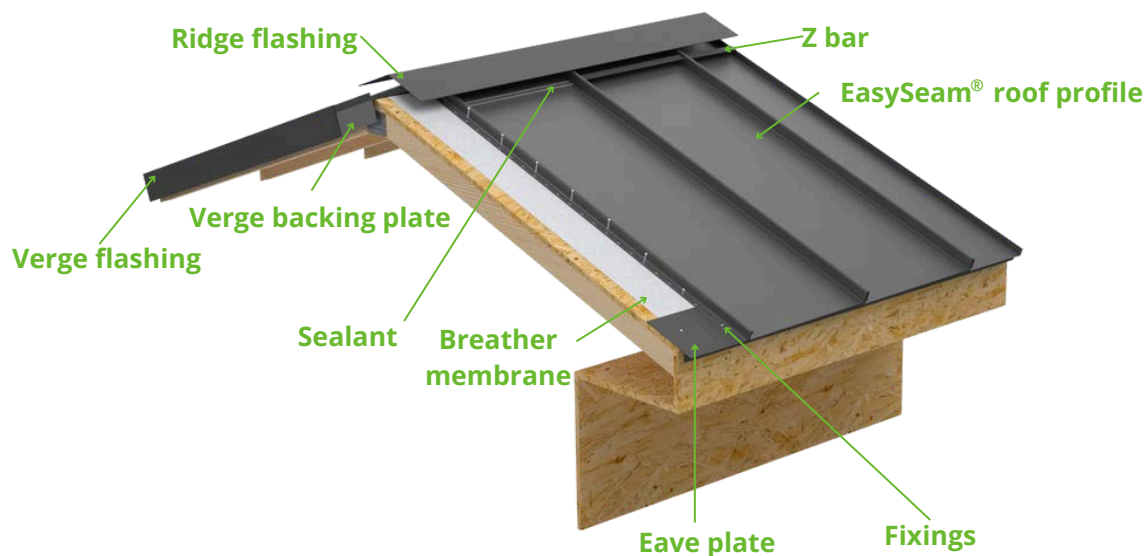
We are proud to be part of the Resource group of businesses serving the construction sector.

- Isoclad (insulated composite panels)
- Securiclاد (high security modular panels)
- SIP Building Systems and SIPCO (structural insulated panels)
- EBD Doors (Commercial steel doors)

2. EasySeam[®] Roof System

EasySeam Standing Seam Roof System offers a contemporary, robust, high-quality solution. It uses a metal standing seam profile to offer a durable solution that's quick and easy to install.

Offered as a complete kit of parts, EasySeam Roof System includes breather membrane, ridge, eaves and verge flashings, fixings and sealant, ensuring you get the very best aesthetics and quality for your whole roof.



Key features

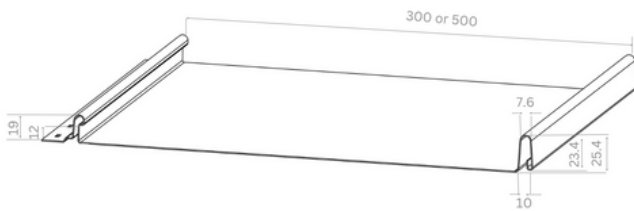
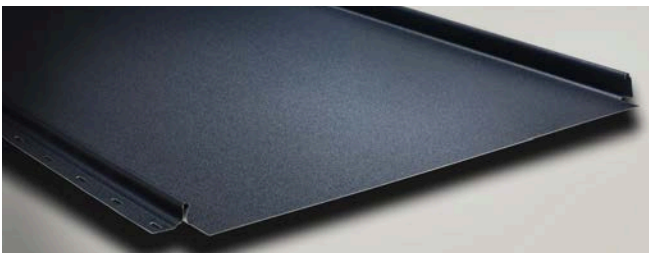
- Engineered system that is manufactured to order, reducing onsite waste.
- 4 different EasySeam profiles, each with a 25mm high seam.
- Available in a choice of pre-finished steel options and colours, depending on building application; Tata Steel Colorcoat HPS200 Ultra[®] and Colorcoat Prisma[®]; SSAB Greencoat[®] Pural BT.
- Suitable for roof pitches between 5 and 45 degrees.
- Available in 300mm and 500mm widths.
- Up to 8 metre lengths available.
- Snap and lock system enables quick and easy installation.
- Notches and tabs at both ends of the profile allow the seam to be sealed from the elements.
- Profiles can be laid firmly onto 18mm Oriented Strand Board (OSB) 3 on top of a breathable membrane, with no requirement for additional brackets.
- Fixings are hidden by the adjacent profile, delivering a stylish and sleek appearance that is typical of a standing seam roof.
- Up to 7x lighter than roof tiles, improving site handleability and reducing final roof weight.
- Suitable for integration with renewable technologies including Photovoltaics.
- Compatible with rainwater harvesting systems.
- Can achieve A1 fire rating when supported by a galvanised steel deck.
- CE marked to EN14783.
- Matching soffits and fascias available.

EasySeam[®] profiles

EasySeam Roof System is available in 4 different profiles, each with a 25mm high seam to suit different aesthetic requirements and wind exposure levels.

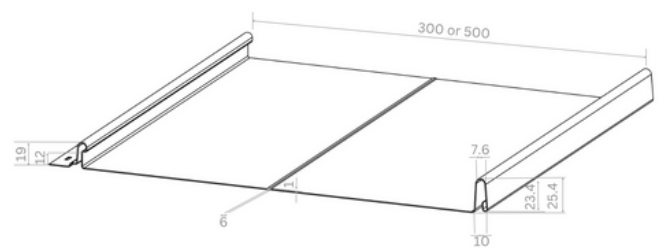
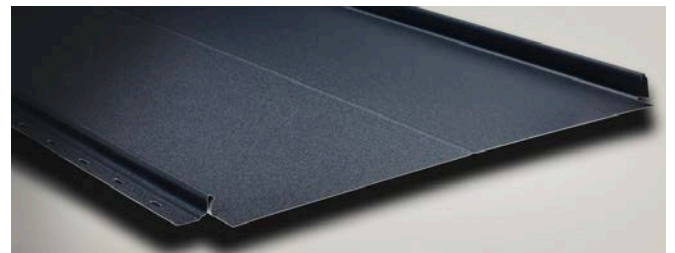
EasySeam[®] Flat Profile

Available in 2 widths 300mm and 500mm. Narrower width uses 50% more fixings and is particularly suited to exposed areas and to help minimise drumming.



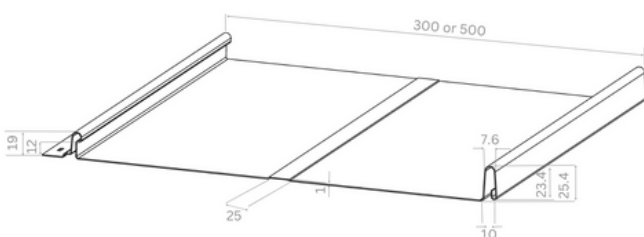
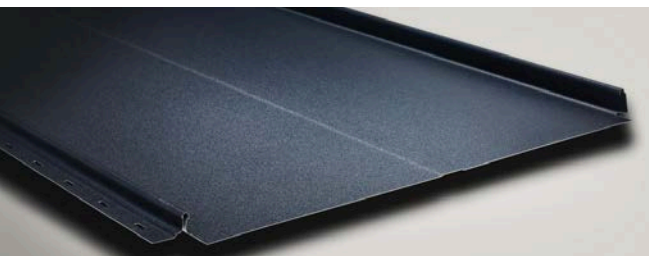
EasySeam[®] Single Pencil Profile

Available in 300mm and 500mm width profiles with a central 2mm upstand.



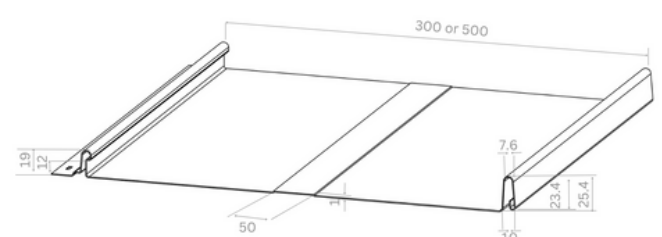
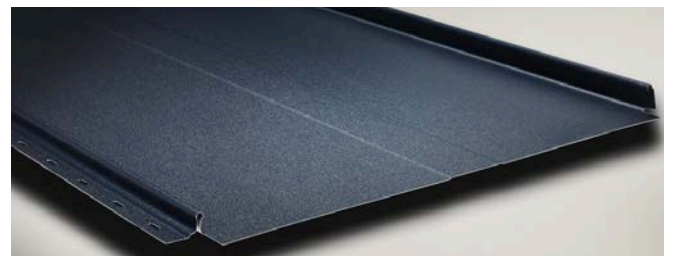
EasySeam[®] Narrow Rib Profile

Available in 300mm and 500mm width profiles with a 25mm central rib.



EasySeam[®] Wide Rib Profile

Available in 300mm and 500mm width profiles with a 50mm central rib which is particularly suited to more exposed areas and to help minimise drumming.

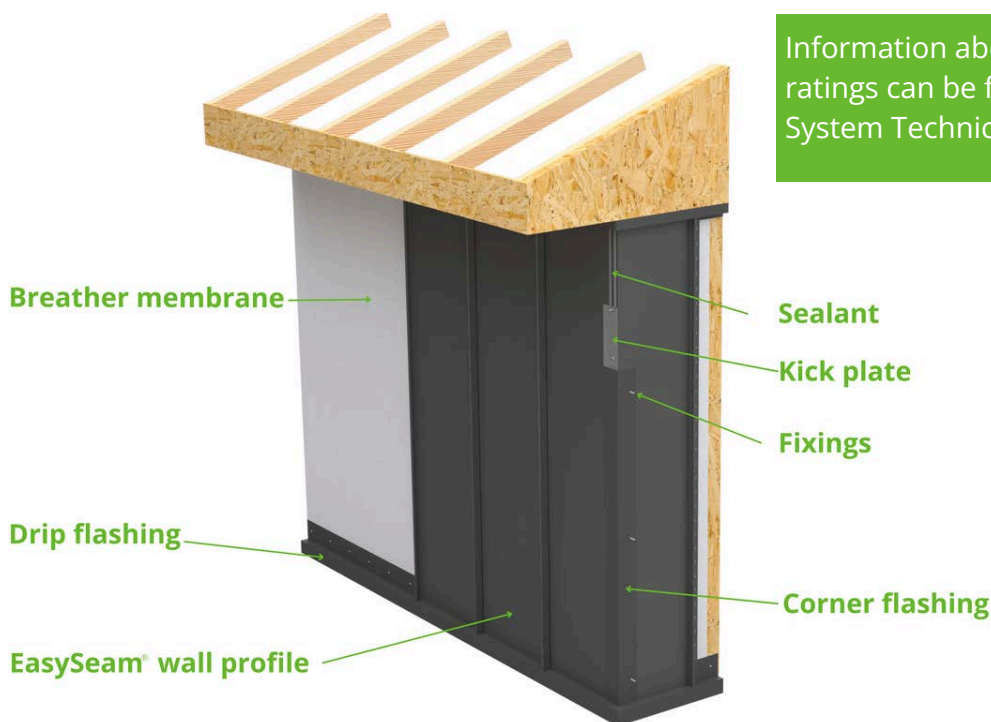


EasySeam® Wall Cladding System

EasySeam Wall Cladding System uses a metal standing seam profile to offer a robust and durable solution that's quick and easy to install. Offered as a complete kit of parts EasySeam Wall Cladding System includes breather membrane, corner and window flashings, fixings and sealant, ensuring you get the very best aesthetics and quality for your walling project.

Available as a standard build up, the EasySeam Wall Profile is supported by and fixed to an 18mm Oriented Strand Board (OSB) 3 and a breathable membrane. This construction build up will achieve a Class C in the European Fire test ISO 9705-1:2016 and is suitable for use on some low-rise buildings (less than 11 metres high in England) and further than 1 metre from the boundary.

Information about different fire performance ratings can be found in Vertex EasySeam Roof System Technical Guide.



Key features

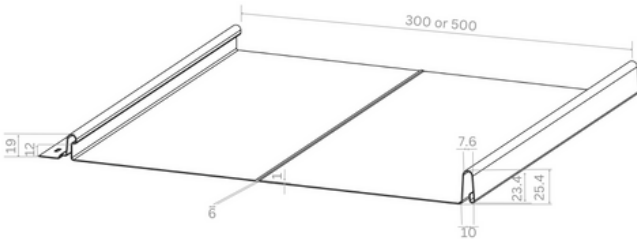
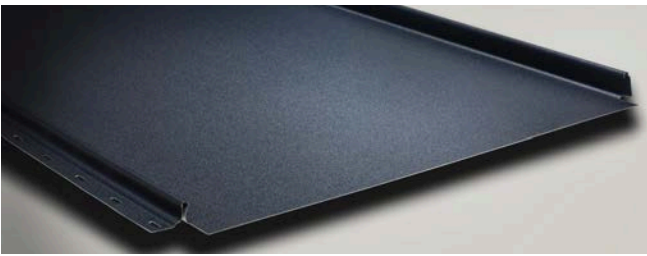
- Engineered system that is manufactured to order, reducing on site waste.
- 3 different EasySeam profiles, each with a 25mm high seam.
- Available in a choice of pre-finished steel options and colours, depending on building application; Tata Steel Colorcoat HPS200 Ultra® and Colorcoat Prisma®; SSAB Greencoat® Pural BT.
- Available in 300mm and 500mm widths.
- Up to 8 metre lengths available.
- Profiles can be laid horizontally or vertically to achieve a range of aesthetic effects.
- Snap and lock system enables quick and easy installation.
- Profiles can be laid firmly onto 18mm Oriented Strand Board (OSB) 3 or galvanised steel deck on top of a breathable membrane, with no requirement for additional brackets.
- Fixings are hidden by the adjacent profile, delivering a stylish and sleek appearance
- CE marked to EN14783.

EasySeam[®] profiles

EasySeam Wall Cladding System is available in 3 different profiles, each with a 25mm high seam to suit different aesthetic requirements. A soffit board option is also available.

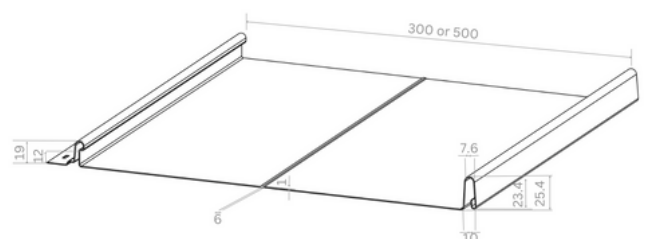
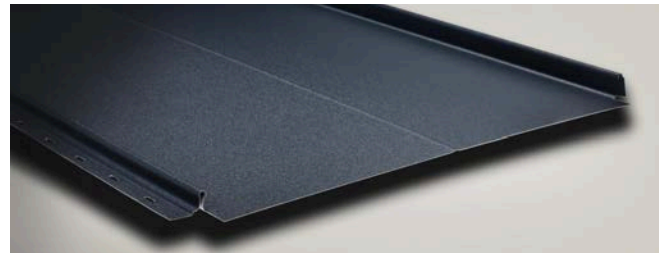
EasySeam[®] Flat Profile

Available in 2 widths 300mm and 500mm.



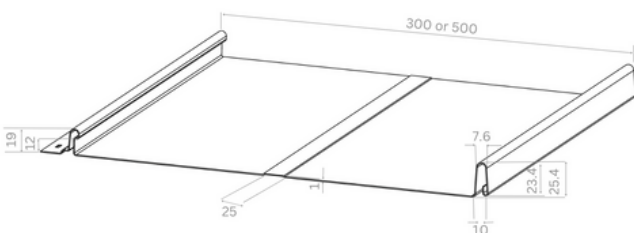
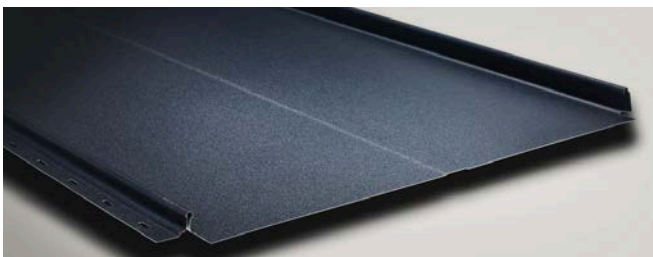
EasySeam[®] Single Pencil Profile

Available in 300mm and 500mm width profiles with a central 2mm upstand.



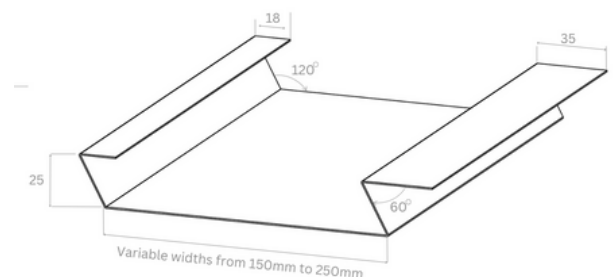
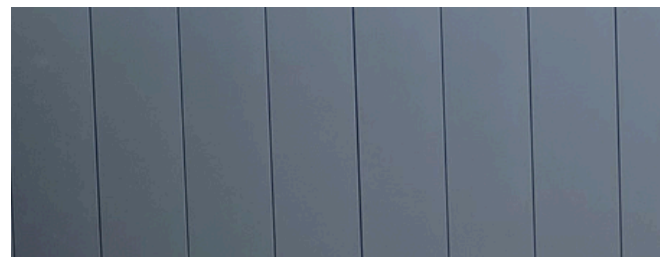
EasySeam[®] Narrow Rib Profile

Available in 300mm and 500mm width profiles with a 25mm central rib.



EasySeam[®] Soffit board

Can be used as wall cladding, laid horizontally or vertically. Available in widths between 100mm and 250mm.



Roofline System

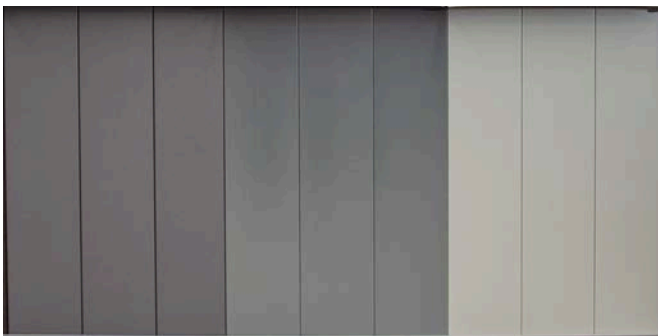
Vertix Systems manufactures made to measure soffits and fascias to match the EasySeam Roof System and can also supply metal gutters and downpipes to complement the roof.

Soffits and fascias

Metal fascias and soffit boards are an important part of the EasySeam Roof System. They are both durable and low maintenance and their resistance to moisture and weathering makes them ideally suited to protecting the roof and maintaining the integrity of the overall structure.

Soffit boards

Soffit Boards are manufactured to order by Vertix[®] Systems to match the material and colour chosen for the EasySeam[®] Roof System and are available in widths between 100mm and 250mm. Butted together these can cover larger soffit areas.



Facias

Facias are manufactured to order by Vertix Systems to match the material and colour chosen for the EasySeam Roof System and at a maximum width of 250mm.

Gutters and downpipes

Gutters and downpipes perform an important function collecting and directing rainwater run-off from the roof. As well as protecting the building from water damage, gutters and downpipes help maintain the structural integrity of the foundations and exterior and preserve the building's overall aesthetics and functionality. Vertix Systems can offer 3 different gutter options.

External gutters

Standard metal gutters supplied with all the components including downpipes. Available as a half round or rectangular shape.



Internal gutters

Made from pre-finished steel backed with a thick membrane and are supplied with the joint brackets and outlets. Internal gutters are within the wall plate of the building.

Hidden gutters

Made from pre-finished steel backed with a thick membrane. Supplied with the joint brackets and outlets. Hidden gutters are at the end of a roof, generally outside of the building wall plate and over the soffit.

Information about safety factors for different gutter types can be found in Vertix EasySeam Roof System Technical Guide.

Material options

Depending on the building application, Vertix Systems can offer pre-finished steel material from Tata Steel; Colorcoat Prisma® and Colorcoat HPS200 Ultra® and SSAB; GreenCoat® Pural BT, giving you the option to select the finish of your choice. We stock the most popular colours and can order additional colours from their standard colour cards on request.

Colorcoat® by Tata Steel

Colorcoat® has been manufacturing pre-finished steel products for 60 years and they are comprehensively tested and manufactured to the highest European standards. Extensively used for roofs and walls, applications include industrial warehouses, commercial buildings, schools, retail and leisure and residential applications. Vertix Systems can offer both Colorcoat HPS200 Ultra® and Colorcoat Prisma® options which are made in the UK. Depending on application, Colorcoat branded products, Colorcoat Prisma® and Colorcoat HPS200 Ultra® are available with either the Confidex® Guarantee or Confidex® Home Guarantee.

Colorcoat Prisma®

Utilises cutting edge three layer manufacturing technology to create a chrome free pre-finished steel product with enhanced aesthetics and long term performance and durability. All colours surpass requirements of Ruv5 as per EN 10169:2022, providing outstanding colour retention.

Available from Vertix Systems in Anthracite Non Matt version, with other colours from the standard range available on request.



Colorcoat HPS200 Ultra®

Designed to withstand even the most demanding and aggressive environments, Colorcoat HPS200 Ultra® pre-finished steel provides super durability and corrosion resistance. This offers a sustainable solution for the building envelope where longevity and durability are imperative over the life of the building.

Available from Vertix Systems in Anthracite Matt, with other colours from the standard range available on request.

SSAB GreenCoat®

GreenCoat® pre-finished steels are the sustainable solution for durable roofs, facades and rainwater systems. Colours and appearance are inspired by Nordic nature and products are optimised for weathering.

GreenCoat® Pural BT

Uses a patented bio-based coating with Swedish rapeseed oil to help substantially lower the environmental footprint of a building and is chromate free. GreenCoat® Pural BT has been developed specifically for standing seam systems and offers excellent durability, UV resistance (Ruv5 for matts) and a slightly structured surface. SSAB GreenCoat® Pural BT is available with a performance guarantee.

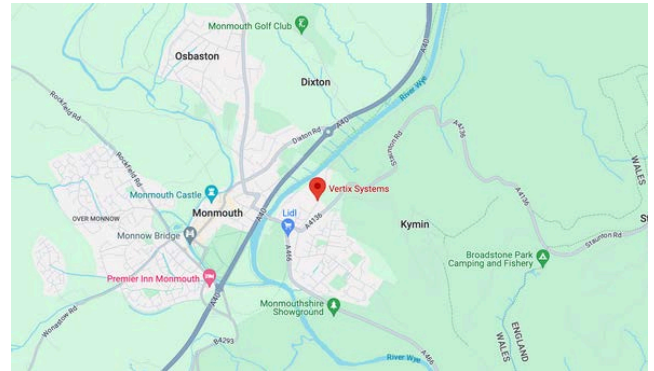
Available from Vertix Systems in Matts: Slate Grey, Stone Grey and Nordic Black. Other colours from the standard colour card are available on request.

Sustainability

Vertex EasySeam Roof and Wall Cladding Systems incorporate a number of features to deliver sustainability from start to finish.

Manufactured in the UK

Vertex EasySeam Roof and wall Systems are manufactured in Monmouth, South Wales, reducing transport miles and the carbon emissions associated with this. Should customers require additional or replacement panels, short lead times allow for speed and ease of supply.



Reduction in on site waste

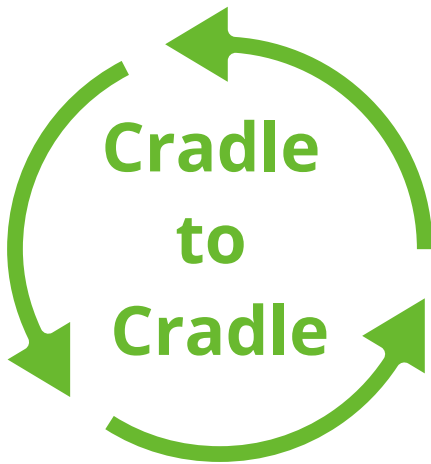
Vertex EasySeam Roof and Wall Cladding Systems are engineered to deliver the highest quality standards and manufactured to the specific width and length dimensions ordered by the customer. This significantly reduces on site waste and helps to maintain tidy site conditions.

Fit and forget

Vertex EasySeam Roof and Wall Cladding Systems can be termed as fit and forget systems, as once installed require little to no maintenance over their lifetime, other than clearing of gutters and removal of any debris that gathers on the roof. As well as making them cost effective over the long-term, this contributes towards their overall sustainability.

Closed loop sustainability

Vertex EasySeam Roof and Wall Systems are easy to disassemble at the end of their life and are 100% recyclable, making them cradle to cradle construction products.



Integration with renewables

Vertex EasySeam Roof System has been designed to accommodate a number of different Photovoltaic solutions.

Information about the different Photo Voltaic technologies it can accommodate can be found in Vertex EasySeam Roof System Technical Guide

Compatible with rainwater harvesting systems

Vertex EasySeam Roof System can be used for rainwater collection for non-potable uses such as irrigation, toilet flushing and cleaning. This can help to promote sustainable water management practices and contribute towards conserving of fresh water sources.



Care has been taken to ensure that the contents of this publication are accurate but Vertix® Systems Ltd does not accept responsibility for errors or information that is found to be misleading. Suggestions for, or descriptions of the end use or application of products or methods of working are for information only and Vertix® Systems Ltd accept no liability in respect thereof. Before using Vertix® Systems products the customer should satisfy themselves of their suitability.

Trademarks

Vertix and EasySeam and trademarks of Vertix® Systems Ltd

Colorcoat, Colorcoat HPS200 Ultra and Colorcoat Prisma are trademarks of Tata Steel UK Ltd

GreenCoat and Pural are trademarks of SSAB group of companies

The Maltings,
East Tyndall Street,
Cardiff,
CF24 5EA.

Telephone: (+44) 01600 734 000

Email: info@vertix.systems

www.vertix.systems