

ARCHITECTURAL MOULDINGS

Emafyl

UK Manufacturing Company



COVING

CORNICE

DADO

SCOTIA

SKIRTING BOARD

QUADRANT

ARCHITRAVE

www.emafyl.com

GLUE IT • NAIL IT • SCREW IT

Not affected by water, temperature changes or humidity. Ideal for any room in the home or office.

SKIRTING & ARCHITRAVE

All the benefits of wood but none of the disadvantages such as splitting, rotting or cracking!

Easy to glue with a 'no nails' adhesive and then simply push into position to fix.

These products can be screwed or nailed if you wish.

Accepts standard filler.

Available in white or wood finishes.

Matching colours in the skirting, architrave, scotia and quadrant.



592-1001



593-1001



594-1001



595-1001



598-1001



509-1076



509-1034



509-1036

SKIRTING & ARCHITRAVE



592-1001



594-1001



598-1001



509-1034



593-1001



595-1001



509-1076



509-1036

SKIRTING & DADO

All the benefits of wood but none of the disadvantages such as splitting, rotting or cracking!

Easy to glue with a 'no nails' adhesive and then simply push into position to fix.

These products can be screwed or nailed if you wish.

Accepts standard filler.

Available in white or wood finishes.

Matching colours in the skirting, architrave, scotia and quadrant.



509-1078



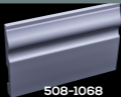
508-1009



508-1010



508-1071



508-1068



150-1001



150-1023

SKIRTING & DADO



509-1078



508-1010



508-1009



508-1071



508-1068



150-1001



150-1023

ARCHITRAVES

All the benefits of wood but none of the disadvantages such as splitting, rotting or cracking!

Easy to glue with a 'no nails' adhesive and then simply push into position to fix.

These products can be screwed or nailed if you wish.

Accepts standard filler.

Available in white or wood finishes.

Matching colours in the skirting, architrave, scotia and quadrant.



521-1040



521-1042



521-1041



521-1017



522-1016



522-1010



522-1006



522-1009

ARCHITRAVES



521-1040



521-1042



521-1041



521-1017



522-1016



522-1010



522-1006



522-1009

CORNICE & COVING

All the benefits of wood but none of the disadvantages such as splitting, rotting or cracking!

Easy to glue with a 'no nails' adhesive and then simply push into position to fix.

These products can be screwed or nailed if you wish.

Accepts standard filler.



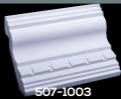
502-1002



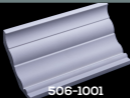
502-1014



504-1002



507-1003



506-1001



506-1003



506-1004

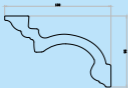
CORNICE & COVING



502-1002



502-1014



504-1002



507-1003



506-1001



506-1003



506-1004

CORNICE & COVING

All the benefits of wood but none of the disadvantages such as splitting, rotting or cracking!

Easy to glue with a 'no nails' adhesive and then simply push into position to fix.

These products can be screwed or nailed if you wish.

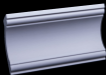
Accepts standard filler.



507-1001



507-1002



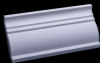
519-1001



523-1001



524-1001



525-1008



525-1006



599-1001

CORNICE & COVING



507-1001



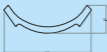
507-1002



519-1001



523-1001



524-1001



525-1008



525-1006



599-1001

QUADRANT & SCOTIA

All the benefits of wood but none of the disadvantages such as splitting, rotting or cracking!

Easy to glue with a 'no nails' adhesive and then simply push into position to fix.

These products can be screwed or nailed if you wish.

Accepts standard filler.

Available in white or wood finishes.

Matching colours in the skirting, architrave, scotia and quadrant.



161-1131



161-1009



161-1011



161-1126



565-1025



565-1003



565-1008



565-1024

QUADRANT & SCOTIA



161-1131



161-1009



161-1011



161-1126



565-1025



565-1003



565-1008



565-1024

THE BENEFITS OF



The **REVOLUTIONARY** alternative to traditional plaster & wood.

WILL NOT crack, rot or split easily.

Tough **STRONG** material.

LIGHT WEIGHT and easy to **FIX**.

WATER RESISTANT.

AVAILABLE in 2m & 2.9m lengths.

CO-ORDINATED skirtings, architraves, dados & cornices.

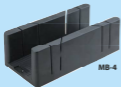
FIXING INSTRUCTIONS

- 1 All surfaces should be clean and dry. We recommend sanding any previously painted area in order to improve adhesion.
- 2 Cut the moulding using a conventional handsaw with a suitable mitre block (4" and 7" blocks are available from us as a stock item). Alternatively, use a circular mitre saw fitted with the correct blade for cutting plastics.
- 3 We recommend using a liquid nails solvent-free adhesive, also available from Emafyl or any major DIY store. Then, clean off any surplus adhesive with a damp sponge.
- 4 Apply normal wood or plaster filler where necessary.
- 5 Architectural Mouldings can be mechanically fixed using conventional screws or nails. For uneven surfaces, it may be necessary to use screws or nails to hold the moulding in position, and these can then be filled.
- 6 Architectural Mouldings are moisture resistant and can be used in areas of high humidity.
- 7 Architectural Mouldings are ready to paint and does not require any preparation.
- 8 For further information or technical assistance, please don't hesitate to contact us on 0208 301 8888 or at despatch@emafyl.com

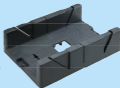
All sizes are nominal and intended as a guide only. In accordance with our policy of continuous improvement, whilst we endeavour to satisfy your requirements, we reserve the right to add or delete products published without notice.

ACCESSORIES

MITRE BLOCKS



MB-4



MB-7

Cut the moulding with a conventional handsaw with a suitable mitre block.

We have 2 available:-

MB-4 which can cut upto 4" (100mm) wide moulding

MB-7 which can cut upto 7" (165mm) wide moulding

ADHESIVE

- To complement our mouldings we offer a adhesive to seal any mitre
- A multi-purpose adhesive which adheres to virtually all common building surfaces
- Emabond Adhesive may be used on rough, uneven or smooth surfaces and is also suitable for filling in small gaps
- Emabond Adhesive fixes all products in the Architectural 2000 range of decorative mouldings
- Solvent free
- Easy to use
- For internal and external use
- Cartridge contains sufficient adhesive to cover 10.5m of a 6mm wide moulding
- 310ml of white adhesive



EMA-BOND

STOCK PRODUCTS

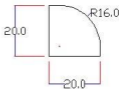
Product Code	Catalogue Codes	Pieces per Box	Length (M)	Total Metres in a Box
150-1001	150.001.001	38	2.9	104.4
150-1018	150.A01.001	27	2	54
150-1019	150.A02.001	38	2	72
150-1023	150.002.001	38	2.9	104.4
161-1009	161.A01.003	60	2	120
161-1011	161.A01.005	60	2	120
161-1126	161.A01.030	60	2	120
161-1131	161.A01.001	60	2	120
502-1002	502.001.001	15	2.9	43.5
502-1005	502.A01.001	15	2	30
502-1014	502.008.001	15	2.9	43.5
504-1002	504.001.001	9	2.9	26.1
506-1001	506.001.001	16	2.9	46.4
506-1003	506.008.001	16	2.9	46.4
506-1004	506.007.001	16	2.9	46.4
506-1005	506.A01.001	22	2	44
506-1006	506.A08.001	22	2	44
506-1007	506.A07.001	22	2	44
507-1001	507.001.001	14	2.9	40.6
507-1002	507.007.001	14	2.9	40.6
507-1003	507.008.001	10	2.9	29
507-1006	507.A06.001	14	2	28
507-1007	507.A07.001	14	2	28
507-1008	507.A01.001	14	2	28
508-1009	508.001.003	22	2.9	63.8
508-1010	508.001.005	22	2.9	63.8
508-1060	508.F01.001	22	5	110
508-1068	508.001.001	22	2.9	63.8
508-1071	508.001.030	22	2.9	63.8
509-1034	509.001.003	11	2.9	31.9
509-1036	509.001.005	11	2.9	31.9
509-1051	509.F01.001	10	5	50
509-1076	509.001.001	11	2.9	31.9
509-1078	509.001.030	11	2.9	31.9
519-1001	519.001.001	20	2.9	58
519-1002	519.A01.001	20	2	40
521-1017	521.B01.003	32	2.2	70.4
521-1040	521.B01.001	32	2.2	70.4
521-1041	521.B01.005	32	2.2	70.4
521-1042	521.B01.030	32	2.2	70.4
522-1006	522.B01.001	44	2.2	96.8
522-1009	522.B01.005	44	2.2	96.8
522-1010	522.B01.003	44	2.2	96.8
522-1018	522.B01.030	44	2.2	96.8
523-1001	523.001.001	26	2.9	75.4
524-1001	524.001.001	17	2.9	49.3
525-1003	525.A02.001	22	2	44
525-1006	525.002.001	22	2.9	63.8
525-1008	525.001.001	22	2.9	63.8
565-1003	565.A01.003	60	2	120
565-1008	565.A01.005	60	2	120
565-1024	565.A01.030	60	2	120
565-1025	565.A01.001	60	2	120
592-1001	592.001.001	18	2.9	52.2
593-1001	593.B01.001	32	2.2	70.4
594-1001	594.001.001	16	2.9	46.4
595-1001	595.B01.001	32	2.2	70.4
598-1001	598.001.001	15	2.9	43.5
599-1001	599.001.001	9	2.9	26.1
600-1001	600.001.001	60	2.9	174
601-1001	601.001.001	28	2.9	81.2
602-1001	602.001.001	51	2.9	147.9
999-1006	MB/7	10		10 Blocks
999-1007	MB/4	10		10 Blocks
999-1013	Emabond	12		12 Tubes

NEW PRODUCTS

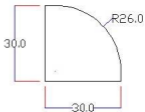
New quadrants in two sizes and a new scotia, all white coated, ready to use.



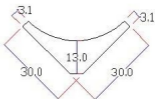
600-1001



601-1001



602-1001



NOTES

A large rectangular area with horizontal lines for writing notes. The lines are evenly spaced and cover most of the page's width and height, leaving a margin at the top and bottom.

NOTES

A large rectangular area with a black border, containing 25 horizontal lines for writing notes. Each line consists of a solid top line and a dashed bottom line.

Revolutionary alternative to traditional wood & plaster

Tel: +44 208 301 8888

Email: despatch@emafyl.com

ARCHITECTURAL MOULDINGS

- Much tougher
- Will not rot
- Will not crack or split easily
- Pre-painted
- Flexible

Robobond Ltd t/a Emafyl
130-150 Hackney Road
London
E2 7QS
UK

www.emafyl.com

GLUE IT • NAIL IT • SCREW IT

Not affected by water, temperature changes or humidity. Ideal for any room in the home or office.