



LixelKity K1  
Compact Yet Powerful



# LixelKity K1

Lixel K1 is XGRIDS' compact handheld scanner. Integrating 48MP x 2 panoramic cameras and 360 ° LiDARs within its body, it generates cm-level colored models for professionals and 3D hobbyists, offering convenient scanning and reconstruction experience.



1kg



color point cloud  
in real-time



360°  
scanning

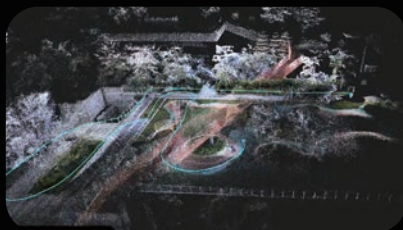


convenient  
operation



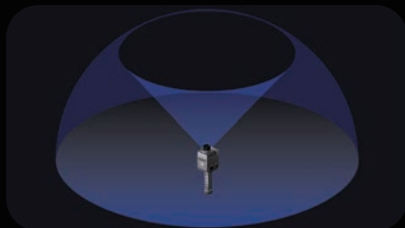
## Compact and Lightweight

With a 1kg (with battery) aluminum alloy body, K1 highly Integrated vision modules and LiDAR.



## Real-Time Color Point Cloud, Delicate Presentation

48 MP x 2 imaging provides exquisite real-time true-color point clouds.



## Panoramic Capture, No Omissions

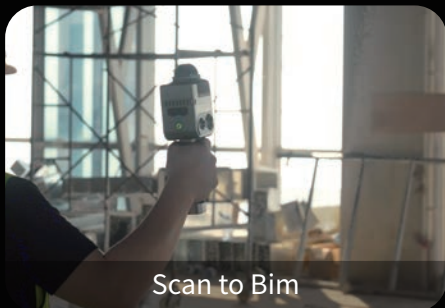
360° x 360° true panoramic vision, 360° laser horizontal scanning field.



## Convenient Operation, Collect as You Wish

Its low learning cost makes professional 3D data collection and modeling extremely simple.

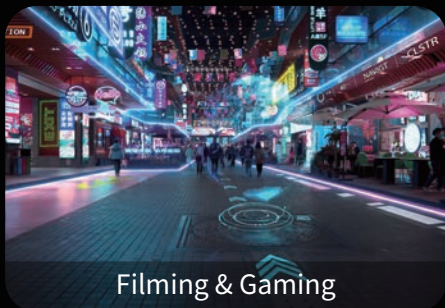
# Application Scenarios



Scan to Bim



Digital Twins



Filming & Gaming



Culture & Tourism

## Software

PC



LixelStudio

An all-in-one 3D post-processing software that offers a range of features, including point cloud viewing, editing, model generation, and post-processing.

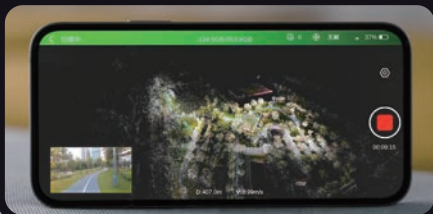


APP



LixelGO

Mobile-controlled operational workflow, real-time preview of scan results, and one-screen monitoring of device status.



# Specification

## Device Performance

Power Input	14.4V
Power Cosumption	<20W
Weight	1kg
Data Interface	USB3.1 Gen2
Storage Capacity	TF card 256G ( Replaceable)
Connection Mode	Wifi/Bluetooth
Operating Temperature	-20°C~50°C
Protection Level	IP54
Product Shell	Navigational Aluminum
Power Ssupply	Fast-lock Battery/External Power
Operating Time	1.5h
Battery Capacity	28.8wh
Number of Cameras	4
Visual-Aided Positioning	Supported
APP WiFi Distance	20m
RTK Module	Supported

## Scan Performance

Laser Class	Class1 / 905nm
Relative Accuracy	1.2cm
Absolute Accuracy	3cm
Repeat Accuracy	2cm
Horizontal Accuracy	0.015°
Working Range	0.1m~40m@10%, 70m@80%
LiDAR FOV	360°* -7~+52°
Scan Mode	Mobile
Scan Speed	200,000 Points/s
	Supported
Resume Scanning from Breakpoint	

## Visual Module

Camera FOV	Color Panorama HDV 360°*360°
Camera resolution	48MP x 2

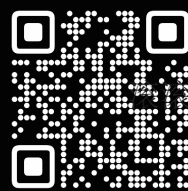
## Data & Storage

Calculating mode	Real-time calculating/ Mixed calculating
Calculating software	Lixel Studio post-processing software for Windows
Point Cloud Format	.Las
Color point cloud	Supported

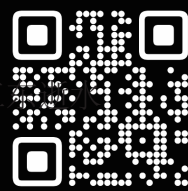
# Contact Us

Sales and Partners: [sales@xgrids.com](mailto:sales@xgrids.com)  
Brand and Business Consulting: [enterprise@xgrids.com](mailto:enterprise@xgrids.com)


# Follow Us



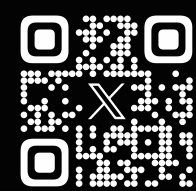
LinkedIn



Youtube



Facebook



X

Company Address: 29th Floor, Colorful Information Innovation Center,  
3176 Keyuan South Road, High-tech South District, Nanshan District, Shenzhen  
Company Website: [WWW.XGRIDS.COM](http://WWW.XGRIDS.COM)

\*Copyright belongs to Shenzhen XGRIDS Innovation Technology Co., Ltd. Reproduction is authorized only with permission.