



JULY
2024



Harvey[®]

Roofing Products

A Division of **MACSTEEL**

PRODUCT BROCHURE

ROOFING INNOVATION



Harvey EcoTile[®]



Harvey Elite[®] Midnight Black



Harvey Thatch Greystone[®]



Harvey Thatch Dark[®]



Look for the Harveytile Quality Stamp ▶▶



Harvey Roofing Products

Selecting any building product is a complex process.

You need to be confident that the product is valid for the application, and that it is reputable, reliable and well established. Harvey Roofing Products ticks all the boxes for a proven, durable roofing solution with a track record of almost 60 years.



Strong Foundations

The same strict code of professionalism, quality and service has placed Harvey Roofing Products at the top of the steel roofing business, and our reputation has been steadily extended through the obvious satisfaction of Specifiers, Builders and Homeowners alike.



Strong On Looks

Harvey Roofing Products manufactures several roofing systems. Our range of roof tiles offer superb structural integrity and immaculate appearance. Our world-class factory based in Brakpan, South Africa, is one of the largest of its kind in the world and maintains high quality standards.



Strong In Design

Each tile is designed and manufactured for strength. The unique overlapping system and fixing technique provide not only a leakproof roof but is also burglar resistant. Steel tiles are also available in Alu-Zinc coated steel for added long term corrosion resistance. Harvey EcoTile is a mineral polymer that will not corrode.



Durable

Through decades of on-going research and development, the stone coating on our steel based tiles will withstand high ultra-violet levels and most adverse weather conditions. The small stone granules bonded to the tile surface result in a durable finish which protects against extensive weathering such as gale force winds, pelting rain and hailstorms.



Low on Maintenance

A Harveytile roof is low on maintenance, which means you don't have the inconvenience of fixing leaks or replacing broken tiles. Stone coated tiles will not require any overpainting.



Versatile

Harveytiles are also ideal for re-roofing, easily transforming your house into a prize home in a short space of time.



Strong On Savings

The excellent weight-to-strength ratio means that, with our tiles, you invest your money in the tiles and not in costly roof structures.



Weatherproof

Both the steel-based tiles and mineral polymer EcoTile can withstand the harshest elements.



20 Year Warranty

Harvey Roof Tiles has excellent functional benefits, offering a 20 year Product Warranty (Terms & Conditions apply).

Harvey Roofing Product Range



Harvey Elite



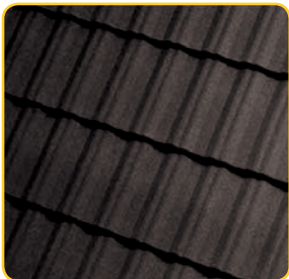
Harvey Thatch



Harvey EcoTile

Profiles

Harvey Elite Profile



Tile Specification (Approx.)

Overall Length:	1675 mm
Cover:	1600 mm
Overall Width:	397 mm
Cover:	369 mm
Mass per tile:	3.9 kg
Mass per sq. metre:	6.6 kg
No. of tiles per sq. metre:	1.69

Harvey Thatch Profile



Tile Specification

Overall Length:	1675 mm
Cover:	1 625 mm
Overall Width:	395 mm
Cover:	350 mm
Mass per tile:	4.2 kg
Mass per sq. metre:	6.9 kg
No. of tiles per sq. metre:	1.76

Double Roman EcoTile



Tile Specification

Overall Length:	420 mm
Cover:	335 mm
Overall Width:	324 mm
Cover:	310 mm
Mass per tile (ave):	1.6 kg
Mass per sq. metre:	15.36 kg
No. of tiles per sq. metre:	9.6

Harvey Solar Bracket



Bracket Specification

The Harvey Solar bracket is suitable for the application of solar panels and geysers. Manufactured from high tensile steel, there is no need to pierce the Harvey Roof Tile and risk a leaking roof. The Harvey Solar Bracket is easily fitted onto the timber or steel batten. Uniform Wind Uplift: 2Kn/m²

Colour Range

	<p>Natural Stone Coat</p> <p>Midnight Black</p>	<p>Natural Stone Coat</p> <p>Greystone</p>		<p>Marbled Black</p>
	<p>Natural Stone Coat</p> <p>Dark</p>	<p>Natural Stone Coat</p> <p>Light</p>		<p>Natural Stone Coat</p> <p>Greystone</p>



The original Harveytile with its legendary strength and good looks.

Your home is one of the biggest investments you will make. A Harvey Roof protects your your loved ones, treasured belongings and the value of your investment.

Harvey Elite Roof Tiles have been protecting and beautifying homes since 1967. Proven style and strength to protect your home in classic, fashionable appearance.

Lightweight, leakproof and weatherproof, Harvey Elite Roof Tiles not only look good, it reduces long-term maintenance and cost on your roof structure. Available in a two natural stone coated colours, Harvey Elite Roof Tiles won't break, fade or leak no matter what the weather throws at it.



Lightweight

- Lightweight steel-based roof tiles
- Save on roof-structure timber costs
- Ideal for new roof or re-roofing old roofs



Weatherproof

- Gaps are eliminated
- Wind proof
- Hail proof
- Water and leakproof
- Minimised dust ingress
- No water absorption



Low Maintenance

- Avoid the inconvenience of fixing leaks
- Tiles do not need replacement



Attractive

- A range of stunning standard colours
- Double roman design for a unique roof appearance
- Ridge, cap and trim accessories for a professional finish



Unbreakable

- Unbreakable steel substrate
- Bonded stone granules protects against the elements
- No more broken roof tiles even in hailstorms



Easy to Install

- Easily installed on new roofs or over existing roof
- Engineered for effortless overlapping and fixing
- Lightweight for handling and on-site speed



Solar Compatible

- Fixing brackets available
- A steel drill bit can easily be used for drilling holes for wiring / piping requirements



Harvey Thatch®

The charm of thatch without the maintenance.

Harvey Thatch solves all the maintenance problems of natural thatch roofs but retains the African look you love. It is installed over a layer of natural thatch so you still enjoy the charm and insulation properties within your home.



Lightning Safe

- Non-combustible and fire resistant
- No need for lightning conductor
- Standard earthing required



Vermin, Bird & Pest Proof

- Water and airtight solution
- No access to the roof for vermin
- No need for unsightly chicken wire



Fade Proof

- Natural, uncoated stone
- Unaffected by the sun's UV rays



Lightweight

- Lightweight steel-based roof tiles
- Save on roof-structure timber costs
- Ideal for new roof or re-roofing old roofs



Naturally Attractive

- A choice of 4 natural stone colours
- Thatch Tile design for a thatch roof appearance
- Ridge, cap and trim accessories for a professional finish
- Use of natural stone as grit
- Beware of imitations that use coloured sand prone to fading.



Never Paint

- Natural stone coat
- Never needs painting



Low Maintenance

- Avoid the inconvenience of leaks
- Eliminates the need for thatch combing
- Never re-thatch



Unbreakable

- Unbreakable steel substrate
- Bonded stone granules protects against the elements
- No broken roof tiles



Solar Compatible

- Fixing brackets available



Weatherproof

- Gaps are eliminated
- Wind proof
- Hail resistant
- Water and leakproof
- No dust ingress
- No water absorption



Easy to Install

- Easily installed on new roofs or over an existing roof
- Engineered for effortless overlapping and fixing
- Lightweight for handling and on-site speed



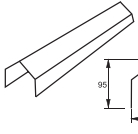
20 Year Warranty

- Excellent functional benefits including a 20 year Product Warranty (Terms & Conditions apply).

Harvey Steel-based Tile Accessories

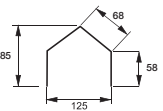


1 Angle Ridge



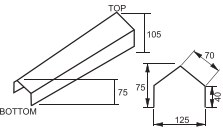
Fixed to double batten at apex
Length: 1720mm (cover 1600mm)
Width: 125mm tapered lengthwise
Height: 95mm
Mass: 2.5kg

2 Angle Ridge End Cap



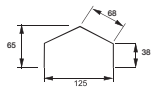
Fixed to end of Angle Ridge
Width: 125mm
Height: 90mm

3 Angle Hip Cap



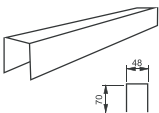
Fixed to double batten at hip battens
Length: 580mm (cover 1 per tile course)
Width: 125mm tapered down to 123mm
Height: 75mm tapered up to 105mm
Mass: 0.8kg

4 Angle Hip End Cap



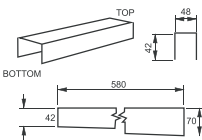
Fixed to end of Angle Hip
Width: 125mm
Height: 70mm

5 Square Ridge (Elite only)



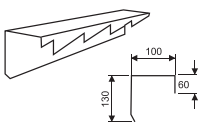
Fixed to double batten at apex
Length: 1720mm (cover 1600mm)
Width: 48mm tapered lengthwise
Height: 70mm
Mass: 1.8kg

6 Square Hip Cap (Elite only)



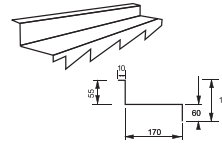
Fixed to single hip batten
Length: 580mm (cover 1 per tile course)
Width: 48mm tapered down to 45mm
Height: 42mm tapered up
Mass: 0.5kg

7 Bargeboard Cover



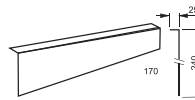
Left and right hand serrated. Fixed to barge boards at gable ends. Sketch shows right handed barge board cover.
Length: 1550mm Height: 130mm
Cover 4 tile courses
Mass: 2.3kg

8 Sidewall Flashing



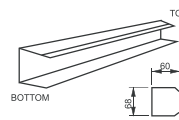
Left and right hand serrated. Sketch shows right handed sidewall.
Length: 1550mm Height: 115mm
Cover 4 tile courses
Width: 170mm Upper Lip: 10mm

9 Cover Flashing



For use at headwall and sidewall flashing as well as for short courses at ridge.
Length: 1720mm Width: 240mm
Upper Lip: 25mm Cover: 1600mm
Mass: 2.5 kg

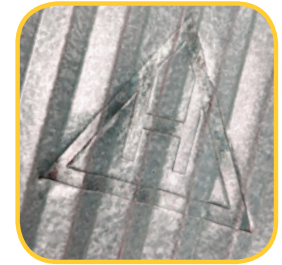
10 Gable Trim (Elite only)



Fixed to gable ends
Length: 1720mm (cover 1600mm)
Width: 60mm
Height: 68mm tapered up
Mass: 1.8kg



Harvey Elite



Harvey Thatch

The Harvey Quality Stamp

Beware of inferior imitations.

We take great care to ensure that every Harveytile is manufactured to the most stringent quality standards. As a division of Africa's leading steel supplier, Macsteel, we have access to the best steel. We prepare and press the Zinc or Alu-Zinc coated steel to the finest tolerances, cover the tile with natural stone coatings and finally achieve the tile with the best appearance.

Once complete, we take care to quality check each tile so as to ensure that it meets our quality standards. Only then do we place our Harvey Quality Stamp on each tile.

This means you can rest assured that if the tile carries the Harveytile Quality Stamp, that it's a Harveytile manufactured to the most exacting standards. Look for the Harveytile Quality Stamp.

"If it doesn't say Harveytile, its not a Harveytile"



100% Recyclable



The sustainable choice made from waste material.

Lightweight, strong and beautiful roof tiles manufactured from sustainable sources. Harvey EcoTile® is a Mineral Polymer Composite Roof Tile manufactured from recycled Polymer and waste mineral. EcoTile® is shatterproof and 4x stronger than brittle concrete tiles, yet it is 70% lighter than comparable concrete tiles.



Lightweight

- 70% lighter than comparable concrete tiles
- Save on roof-structure timber costs
- Transport 3 times more roof tiles with one load
- Easy offload and handling on-site



Low Maintenance

- UV stability
- Ridge Tile assembly does not require unsightly cement and debris
- No need to repaint your roof
- Will not shift due to fixing methodology



Strong & Durable

- 4x stronger than standard concrete tiles
- Virtually unbreakable in normal use
- Shatterproof
- Walkable once installed
- Enhanced security
- Non-brittle
- Save up to 10% on breakages vs. concrete tiles



Weatherproof

- Gaps are eliminated
- Wind proof beyond gale force
- Hail proof
- Water and leakproof
- Minimised dust ingress
- Low water absorption



Attractive design

- Classic Double Roman design
- Creates a precise and uniform complete structure
- Consistent matte black textured surface
- Through-colour (not coated)



Easy installation

- 5 Location points for ease of placement
- Fixing screw ensures quick fastening and suitable for high wind areas
- On-site speed due to light weight
- "Cuts like butter" with no dust unlike concrete tiles



Paintable

- Standard matte marbled black coloured tile
- No need to paint
- Paintable with Harvey Products approved paint in any colour desired post construction



SANS 10400-T Tested

- Harvey Eco Tile is tested in Accordance to SANS -10177 - 123 and conforms to SANS 10400-T with regards to safety distance
- Agrément certification ref: 2021/624



Solar Compatible

- Fixing brackets available
- A masonry drill bit can easily be used for drilling holes for wiring / piping requirements



Re-roofing

- Suitable for re-roofing over an existing roof
- No disruption to occupants.

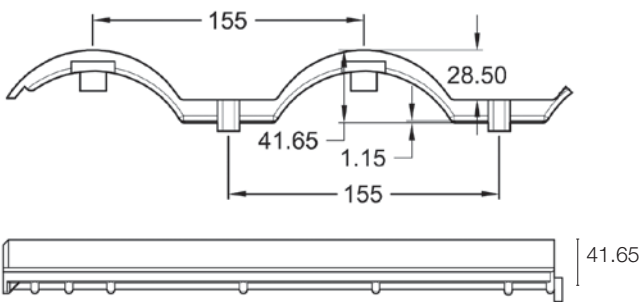
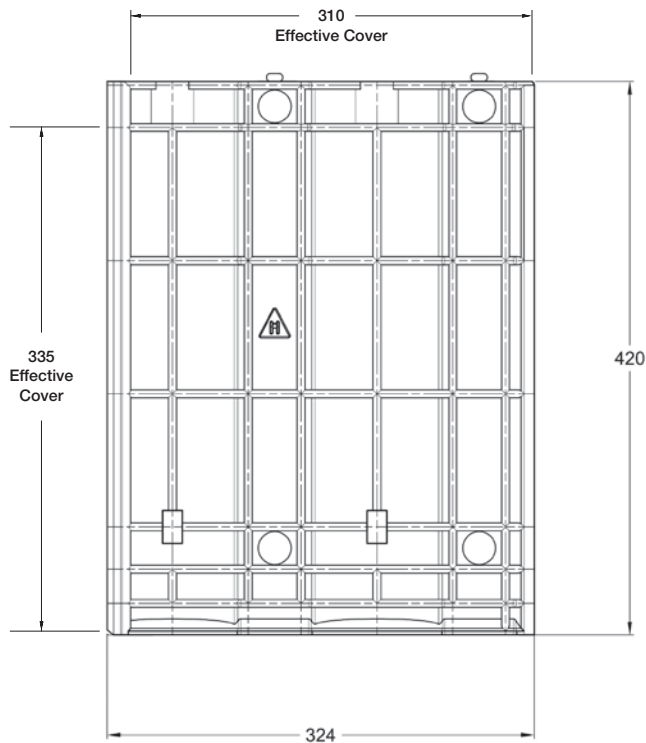
Harvey EcoTile® Accessories



Technical Specifications

(Dimensions in mm)

Tile weight (ave): 1.6kg each
Tiles per m²: 9.6
Weight per m²: 15.36kg

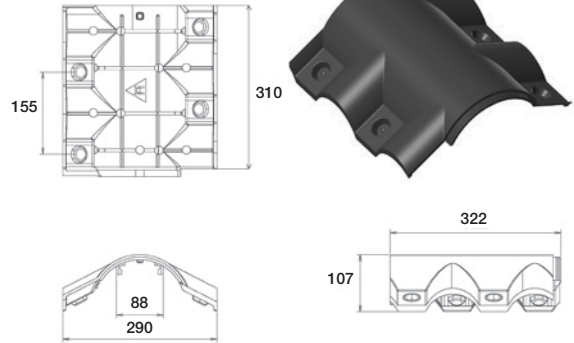


Wall thickness:
4.5mm

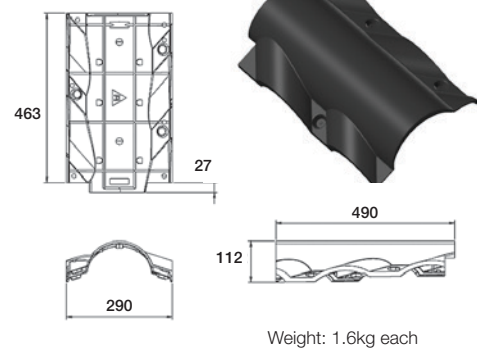
Overall thickness:
12mm

Accessories

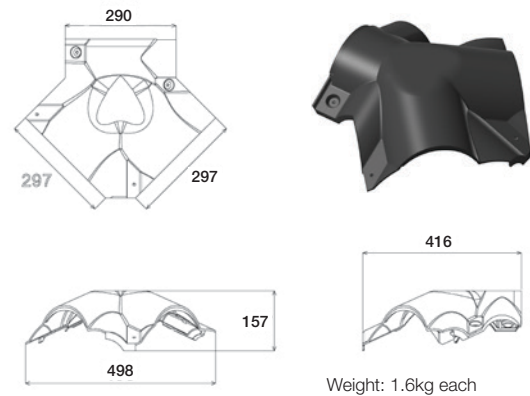
Ridge Cap



Hip Cap



Hip Starter



Fastening Accessories

Self Drilling screw #10
 (4.8mm) x 45mm Hex
 Washer Head T17 CL3
 + #10 x 16mm Bonded
 Washer with Seal



Solar Bracket



Harvey Roofing Products

A Division of Macsteel Service Centres SA (Pty) Ltd.

Tel: +27 11 741 5600

info@harveyroofingproducts.co.za

www.harveyroofingproducts.co.za

