

GROUND GRANULATED BLAST FURNACE SLAG

TS EN 15167-1

► Chemical Requirements

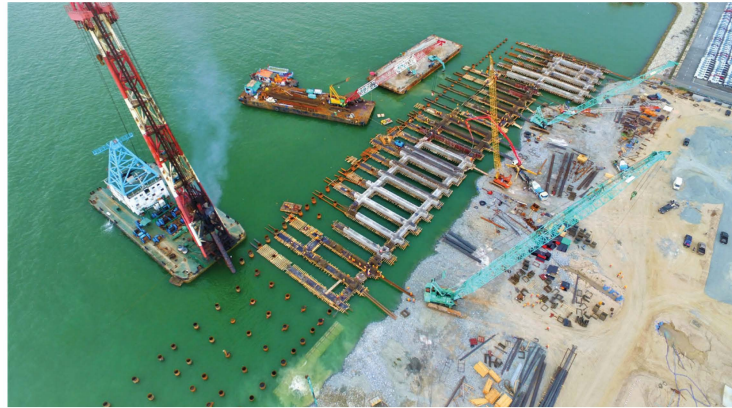
Magnesium Oxide (MgO) ≤ 18%
 Sulphide (S²⁻) ≤ 2%
 Sulfate (SO₃) ≤ 2,5%
 Cl ≤ 0,10%

► Physical Requirements

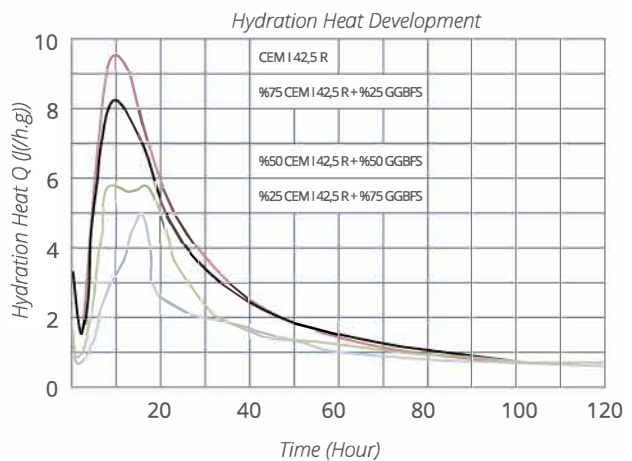
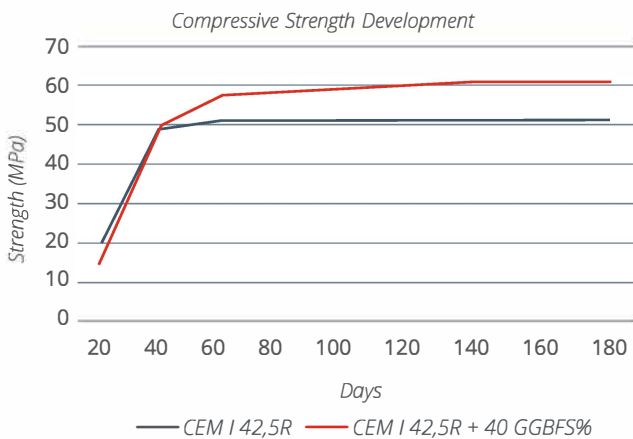
Blaine ≥ 2750 cm²/g
 Activity Index 7 Days ≥ 45%
 Activity Index 28 Days ≥ 70%

► Advantages

- High resistance to chemical impacts
- High resistance to sulphate
- High durability
- High ultimate strength
- High workability
- Low hydration heat
- Low shrinkage
- Low permeability
- Low carbon emission



Cement Type	CEM I	CEM III/A (50% GGBFS)	CEM III/B (70% GGBFS)
Clinker Rate	90%	40%	20%
Amount of CO ₂ Emission from Production of 1 Ton of Cement (kg)	900	400	200
CO ₂ Emission Gain		%56	%78

Eco-Friendly Ground Granulated Blast Furnace Slag


► Recommended Applications

► Ready-Mix Concrete

Suitable for use with cement in the production of concrete for coastal and port constructions, offshore structures, waste water plants, foundation piles, water canals and dam.

► Mass Concrete

Suitable for use in mass concretes requiring low hydration heat. It prevents formation of thermal cracks.

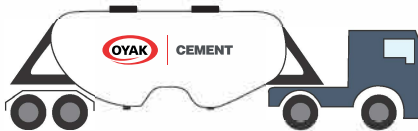
► Industrial Ground Concrete

Suitable for use in the production of industrial ground concrete which is exposed to sulfate attack.

► Availability and Delivery



- Bigbag (1,5 Tons)
- Bulk



► Precautions in Application

► Should be used in concrete production in compliance with the minimum equivalent binder ratios and "k" binding coefficient set out in the standards.

► Provide adequate protection and cure according to correspondent standards.

► For concrete containing blast furnace slag in its mixture, keep framework and scaffolding in place until adequate mechanical strength is obtained.

► Should be used in limited amounts during winter. (It can also be used at a high rate with the precautions to be taken in concrete design and casting)

► Not Recommended for

► Not suitable for production requiring early demolding.

► Not suitable for concrete production to be poured without any measures under cold weather conditions.

► Environment, Safety and Storage

► Wear suitable protective clothing, gloves, eye and face protection equipment.

► For detailed safety information, request the "Safety Data Sheet" of the product.

► Stock the GGBFS in suitable silos so that they are not exposed to moisture and wind.



www.oyakcemento.com • www.oyakwhitecement.com

technicalsupport@oyakcemento.com



Whatsapp
Customer Care
0 538 394 22 91