

INTRODUCING BULLFIX

THE HEAVY DUTY PLASTERBOARD FIXING

Bullfix Plasterboard Fixings are the revolutionary way of hanging heavy objects on plasterboard, providing confidence that they will hold strong.

REASONS WHY THE TRADE ARE GIVING BULLFIX UNIVERSAL 5 STAR REVIEWS:

- HOLDS STRONG UP TO 116KG*
- UNIVERSALLY USEABLE FOR ALL PLASTERBOARD APPLICATIONS
- PATENTED SMART WING DESIGN WHICH REMAINS TIGHT AND FIRM WITHOUT WORKING LOOSE
- INSERTING A SCREW IS IMPOSSIBLE UNLESS WINGS HAVE FULLY DEPLOYED
- EASY TO USE IN 5 SIMPLE STEPS

UNIVERSAL
IN USE



DOT AND DAB

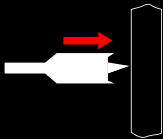


INSULATED PLASTERBOARD

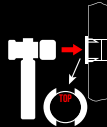


STUD WALLS

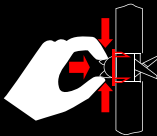
EASY TO USE IN
5 SIMPLE STEPS



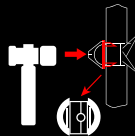
1. DRILL



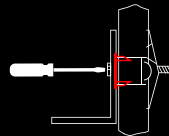
2. INSERT COLLAR



3. PUSH IN FIXING



4. TAP UNTIL FLAT



5. ATTACH OBJECT
TO WALL

*SEE WEBSITE FOR FURTHER INFORMATION

WWW.BULLFIX-FIXINGS.COM



VIEW VIDEO TO
FIND OUT MORE:



PRODUCTS COMING SOON
FROM **BULLFIX**:



FOR USE WITH
CONCEALED WALL
HANGERS



BULLFIX CONCEALED WALL BRACKET

Bullfix has developed an innovative cupboard bracket, specifically designed for use with concealed wall hangers when mounting cupboards on plasterboard.

By installing this bracket with Bullfix Plasterboard Fixings, you can ensure a strong and reliable hold.

This is the only wall bracket that has been rigorously tested and approved by FIRA, guaranteeing its quality and safety.

BULLFIX RADIATOR BRACKETS

- COMING SOON

Heavy radiators, like decorative and column radiators, often come with brackets that are not suitable for securing to plasterboard.

Bullfix Radiator Brackets, used alongside the supplied brackets, distribute the load more effectively across the plasterboard. This provides enhanced strength, especially when paired with Bullfix Plasterboard Fixings.

Soon to be available in both white and anthracite.

