

# Two Counties Foods Ltd

International Meat & Poultry Suppliers

# Product Brochure



Successfully trading Meat and Poultry for over 40 years

# Two Counties Foods Ltd

International Meat & Poultry Suppliers

## About us

Two Counties Foods has been established for over 40 years successfully importing and exporting meat and poultry on a European and Worldwide basis. During this period, we have handled many thousands of tonnes of product with an increasing year on year turnover now exceeding £50 million.

We have a dedicated and enthusiastic Sales and Marketing team with a wealth of experience in the various sectors of the food industry. This is supported by a technical department providing the latest up to date information on food legislation and supplier's due diligence; ensuring products meet with the highest international levels of quality throughout our supply chain.

Over the years we have formed long lasting partnerships with suppliers who we have represented in the UK and European markets whether promoting the suppliers 'own label' or under our own 'Gold Farm' brand.

The range of products supplied is extensive and is available in fresh or frozen format to include poultry & poultry cuts as well as all the main primal cuts of lamb, mutton, pork & beef with daily distribution around the UK. We are active in all markets in the food industry, including manufacturing, wholesale and food service sectors.

# Two Counties Foods Ltd

International Meat & Poultry Suppliers

## POULTRY – CHICKEN



**WHOLE CHICKEN**



**BREAST FILLET**



**3 JOINT WING**



**MIDWING**



**THIGH MEAT S/LESS B/LESS**



**LEG MEAT S/LESS B/LESS**



**LEG QUARTER**



**DRUMSTICKS**



**LIVER**



**HEARTS**



**GIZZARDS**



**NECKS**



**CARCASS**



**FEET**



**PAWS**



**SKIN**



# Two Counties Foods Ltd

International Meat & Poultry Suppliers

## DUCK



**HEAD ON**



**OVEN READY**



**BREAST FILLET**



**LEGS**



**MID & TIP WINGS**



**HEARTS**



**LIVER**



**GIZZARDS**



**CARCASS**



**TONGUES**



**FEET**



**NECKS**

## GOOSE



**OVEN READY**



**BREAST**



**LEGS**



# Two Counties Foods Ltd

International Meat & Poultry Suppliers

## TURKEY



**WHOLE TURKEY**



**BUTTERFLY**



**CROWN**



**LOBE**



**DRUMSTICKS**



**NECKS**



**WINGS**



**THIGH MEAT**

## HENS



**WHOLE HENS**



**BUTTERFLY**



**CROWN**



**LOBE**



**DRUMSTICKS**



**NECKS**



**WINGS**



[www.twocountiesfoods.co.uk](http://www.twocountiesfoods.co.uk)

# Two Counties Foods Ltd

International Meat & Poultry Suppliers

## BEEF



**FILLET**



**RIBEYE**



**STRIPLOIN**



**BONELESS PLATE**



**SHIN**



**OXTAIL**



**LMC**



**HEART**



**FAT**



**FEET**



**LIPS**



**MIXED OFFAL**



**TRIPLE**



**HONEYCOMB**



**OMASUM**



**GREEN TRIPE**



# Two Counties Foods Ltd

## International Meat & Poultry Suppliers

### LAMB



**LEG CKT**



**ABO CHUMP OFF**



**BONELESS**



**BREAST**



**HIND SHANK**



**BONE IN CHUMP**



**BONELESS CHUMP**



**HEARTS**



**KIDNEY**



**WHITE FEET**

### MUTTON



**LEGS**



**BACKSTRAP**



**TRIM**



**FAT**



# Two Counties Foods Ltd

International Meat & Poultry Suppliers

## Pork



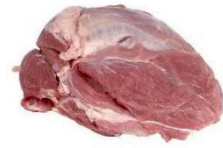
**BELLIES**



**LOIN RIBS**



**SPARERIBS**



**SHOULDER**



**COLLARS**



**JOWL**



**NECK BONES**



**LOIN**



**TENDERLOIN**



**LOIN BONE IN**



**4D SHOULDER**



**TRIM**



**FAT ENDS**



**FEET**



**STOMACH**



**SKIN**



[www.twocountiesfoods.co.uk](http://www.twocountiesfoods.co.uk)