

Product ²⁰²⁵ Catalogue

Seoul Searching 🔍



Digital Catalog



EastEco
K-FOODS



Contents

About Us	04
Industry Overview	07
Product Overview	08
Product Categories	09
Logistics & Distribution	16
Introducing RENGI	17
Contact Info	19



Welcome Message

Dear Valued Partners and Customers,

As the CEO of EastEcofoods, I am excited to share our journey and vision for the future with you. Over the past 15 years of living in the Netherlands and pursuing my passion for food technology, I have dedicated myself to introducing the vibrant flavours of Korea to Europe. With EastEcofoods, we are not just about importing and manufacturing premium Korean food – we are creating a bridge between cultures and delivering an authentic Korean culinary experience to consumers across Europe. And one thing is certain: we only do delicious food.

We like to call it “Seoul searching” – the growing demand for Korean products and flavours. As we approach 2025, Korean cuisine is set to take centre stage in the European market, and we are thrilled to be at the forefront of this exciting movement. We are committed to making EastEcofoods the go-to name for all things Korean in Europe. Our operations span the Netherlands, the UK, France, Germany, and Belgium, and we are constantly expanding to meet the increasing demand for Korean flavours. At EastEcofoods, we value every interaction with our customers and consumers. We are driven by a mission to build lasting relationships and provide exceptional support. Our fast and flexible approach ensures that we can quickly respond to the needs of our partners while developing tailored marketing plans that resonate with local markets. We also take pride in the world-class customer service and continuous support we offer, ensuring that every step of the journey is seamless and efficient.

As we look to the future, we are confident that EastEcofoods will continue to play a leading role in shaping the success of Korean products in Europe. We are committed to providing top-quality products, sustainable solutions, and the innovative support needed to thrive in this exciting market.

Thank you for your trust and partnership. Together, we will continue to grow and share the flavours of Korea with the world.

Best regards,
SJ Kim
CEO, EastEcofoods
info@eastecofoods.com



Who Are We?

Local Manufacturer of EU and operations in the BENELUX, UK, France and Germany.

Importer of premium Korean food, EU manufacturer, and sustainability-driven company.

Industry Overview & Trends

K-Food Popularity:

Brief on the global rise of Korean cuisine, driven by K-culture.

European Food Market:

Key trends like ready-to-eat meals, Halal compliance, and sustainability



EastEco
K-FOODS

Industry Overview & Trends

Korean Cuisine in Europe: A Rising Trend

Korean food is becoming a favorite across Europe, especially among younger generations who love its bold flavors and convenience. The global rise of Korean culture through K-pop and K-dramas has fueled this trend, making Korean cuisine more popular than ever.

Growing Demand for Ready-Made Meals

Ready-made meals are booming, expected to reach **USD 67 billion by 2027**. Younger consumers are looking for quick, delicious, and healthy options, and Korean food—with its rich flavors and ease of preparation—is perfectly positioned to meet this demand.

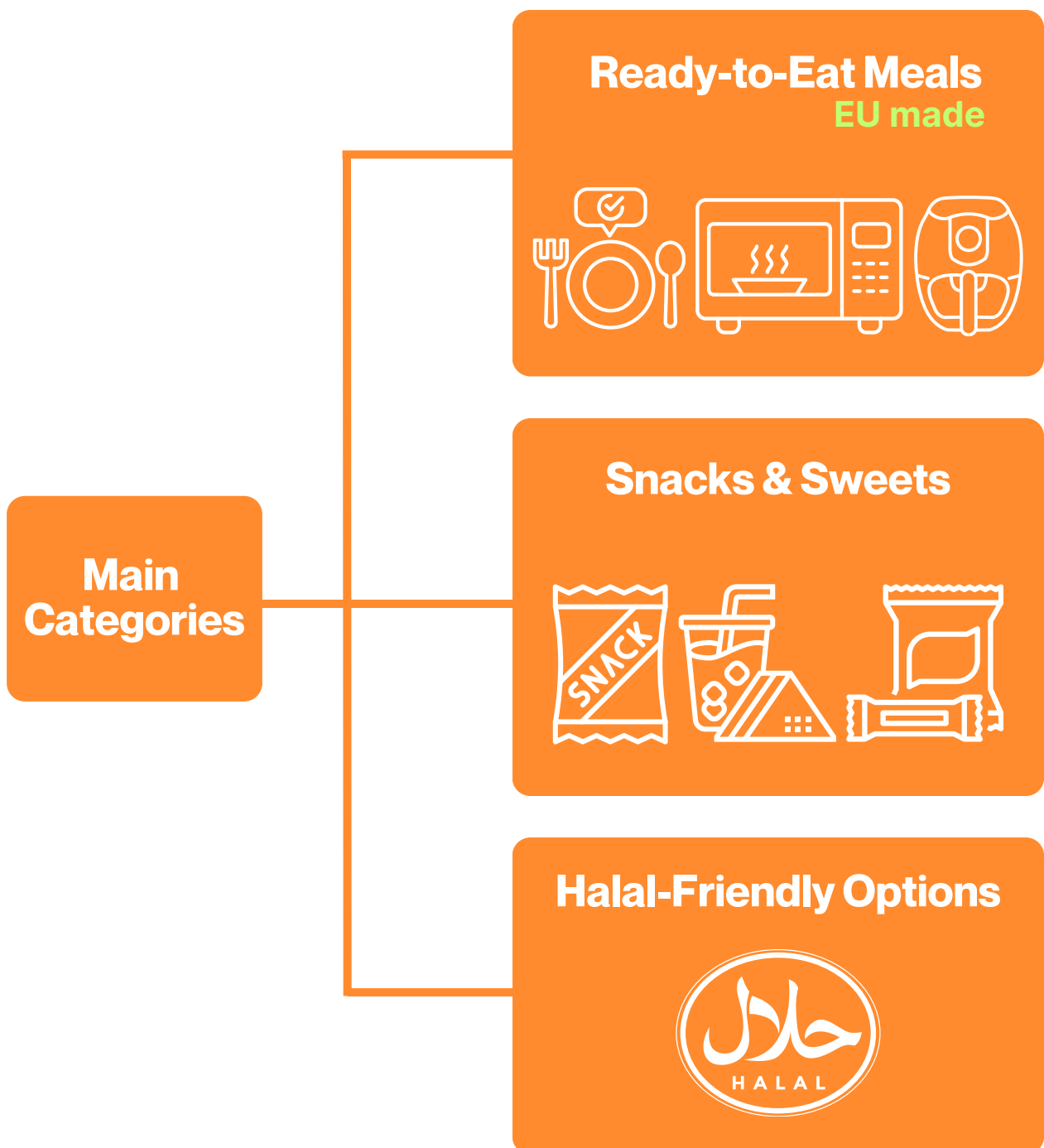
Easteco: Extensive Range of Meats in Korean Cuisine

Easteco stands out with its diverse range of meat-based Korean dishes like **bulgogi** and **Korean fried chicken**. Whether marinated for grilling or ready-to-eat, our products offer authentic flavors and high-quality protein-packed options for every taste.

Why Choose Easteco?

Easteco delivers authentic, ready-to-eat Korean meals tailored to Europe's evolving tastes. With a focus on quality, innovation, and variety, we provide a true Korean food experience that combines convenience and authenticity. Explore our range today and savor the best of Korean cuisine.

Product Categories Overview





**Product
Categories**
-Rengi Street Foods-

Kimbap (Fried Tofu)

WEIGHT 230g |
USE BY DATE 24 months |
10 or 36 EA per box



Kimbap (Mushroom Japchae)

WEIGHT 230g |
USE BY DATE 24 months |
10 or 36 EA per box



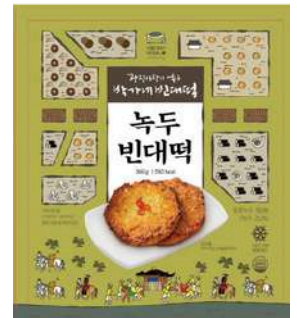
Chicken Dakgalbi

WEIGHT 400g |
USE BY DATE 18 months |
30 EA per box



Mung Bean Pancake

WEIGHT 360g |
USE BY DATE 18 months |
16 EA per box



Hotteok (Red Bean)

WEIGHT 400g |
USE BY DATE 12 months |
24 EA per box



Hotteok (Seeds)

WEIGHT 400g |
USE BY DATE 12 months |
24 EA per box



Korean Boneless Chicken (Sweet garlic)

WEIGHT 250g |
USE BY DATE 24 months |
12 EA per box



Korean Boneless Chicken (Sweet & Spicy)

WEIGHT 250g |
USE BY DATE 24 months |
12 EA per box



Japchae Mix

WEIGHT 285g |
USE BY DATE 12 months |
30 EA per box



Korean Chicken Corndogs

WEIGHT 240g |
USE BY DATE 24 months |
12 EA per box



Korean Chicken Corndogs with Potato

WEIGHT 200g |
USE BY DATE 24 months |
12 EA per box





Product Categories

-Rengi Cuisine-
(Food Service)

Rengi Cuisine (Food Service)

Bulgogi (Beef/Pork)

USE BY DATE 12 months



Chicken Dakgalbi

USE BY DATE 12 months



Corndogs

USE BY DATE 12 months



Chicken Corndogs

WEIGHT 5 X 800g |
USE BY DATE 12 months



Korean Boneless Chicken (Sweet garlic)

WEIGHT 12 kg |
USE BY DATE 24 months



Korean Boneless Chicken (Sweet & Spicy)

WEIGHT 1,2 kg |
USE BY DATE 24 months





Product Categories

-Coming Soon-
(2025)

Coming Soon (2025)

Product list

Kimbap (Buldak)

WEIGHT 230g |
USE BY DATE 18 months



Kimbap (Bibim)

WEIGHT 230g |
USE BY DATE 18 months



Korean Pancake (Kimchi)

WEIGHT 260g |
USE BY DATE 18 months



Bungeoppang (Chocolate Cream)

WEIGHT 300g |
USE BY DATE 24 months



Bungeoppang (Red bean)

WEIGHT 300g |
USE BY DATE 24 months



Bungeoppang (Cream Puff)

WEIGHT 300g |
USE BY DATE 24 months



Logistics & Distribution

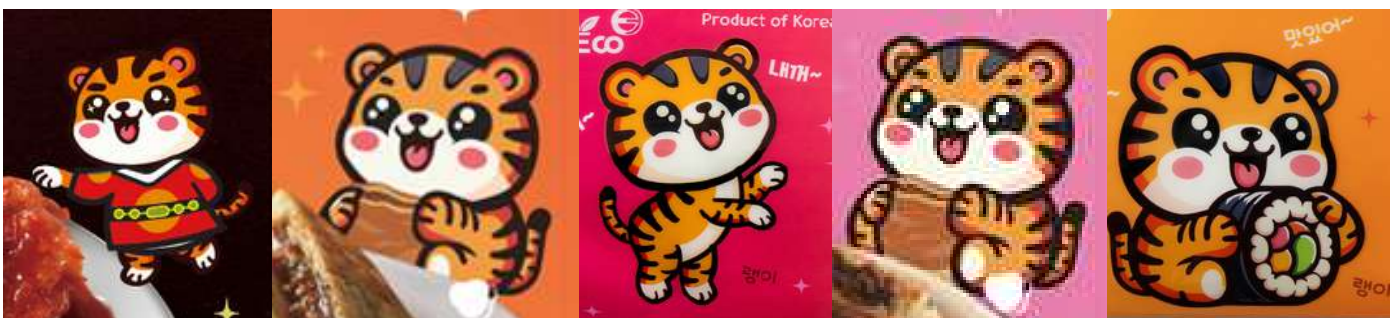
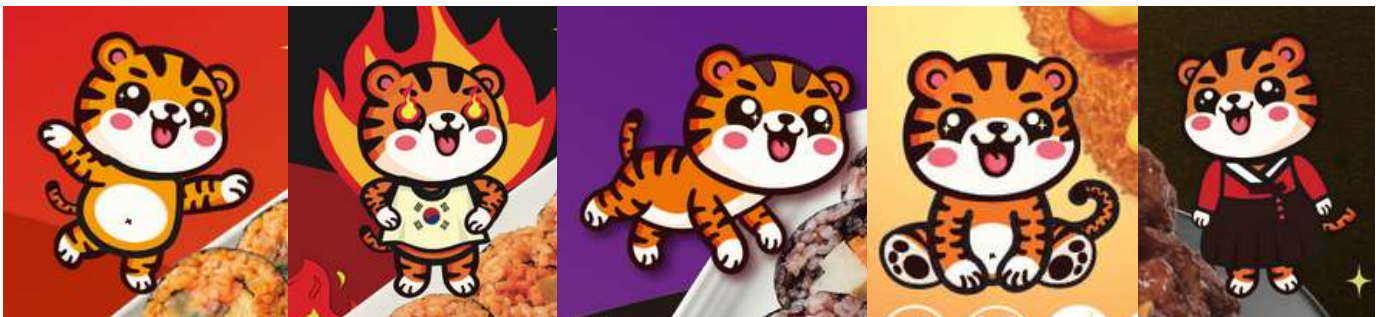


INTRODUCING

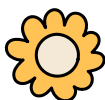


Rengi

is a character that represents the best of Korean food, made to suit European tastes. Every product with the Rengi character is created with great care, using carefully tested recipes to guarantee top quality and delicious flavour. Rengi is your guide to authentic Korean cuisine, helping consumers instantly recognise and trust the brand.



RENGI





Contact Us

Phone

+31 6 30271555
+31 6 24782538

Website

www.eastecofoods.com

Email

info@eastecofoods.com

Address

Agrobusinesspark 10,
Wageningen,
The Netherlands



Scan this QR Code to get to know about our Instagram page!

@easteco_foods



**Your Trusted Partner
for Korean Cuisine in Europe,**

EastEco
K-FOODS