



ELBAK

FOOD PROCESSING COMPANY

- EST 1972 -

*Natural side
of taste*

1
WHO WE ARE

4
PACKING SEASON

5
PRODUCTS

2
SUSTAINABILITY

6
MAIN PACKAGING

3
CERTIFICATES & AWARDS

7
NEW PRODUCTS

8
COLLABORATIONS

ELBAK'S HISTORY

- **Elbak** is a food processing company, established in 1972 in Larissa having as business partner the **German group I. Schroeder KG** based in Hamburg.
- Among the company's activities are the **production and distribution of fruits, olives, marmalades, sauces in cans, jars and plastic cups.**
- Another activity is the production and distribution of fruit purees in aseptic packaging.

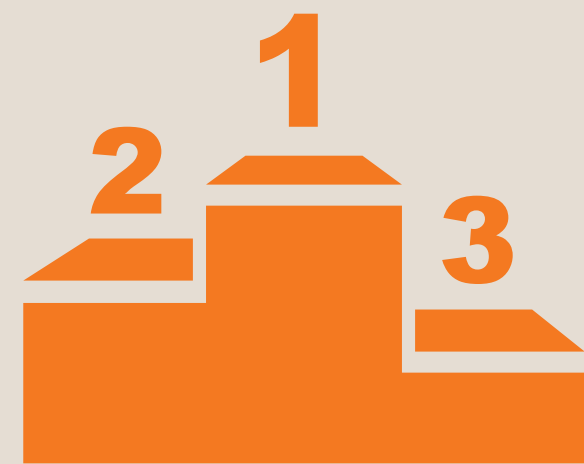
established
in **1972**



WHO WE ARE

- The factory is **located in Central Greece.**
- Fruits' growing areas are in the immediate vicinity.
- Production of pasteurized products.
Fruits are processed maximum **24h** after harvesting.





CANNING INDUSTRY RANKS

**3rd in exports
in Greece,
after Tourism &
Shipping**



PRODUCE & SUPPLY

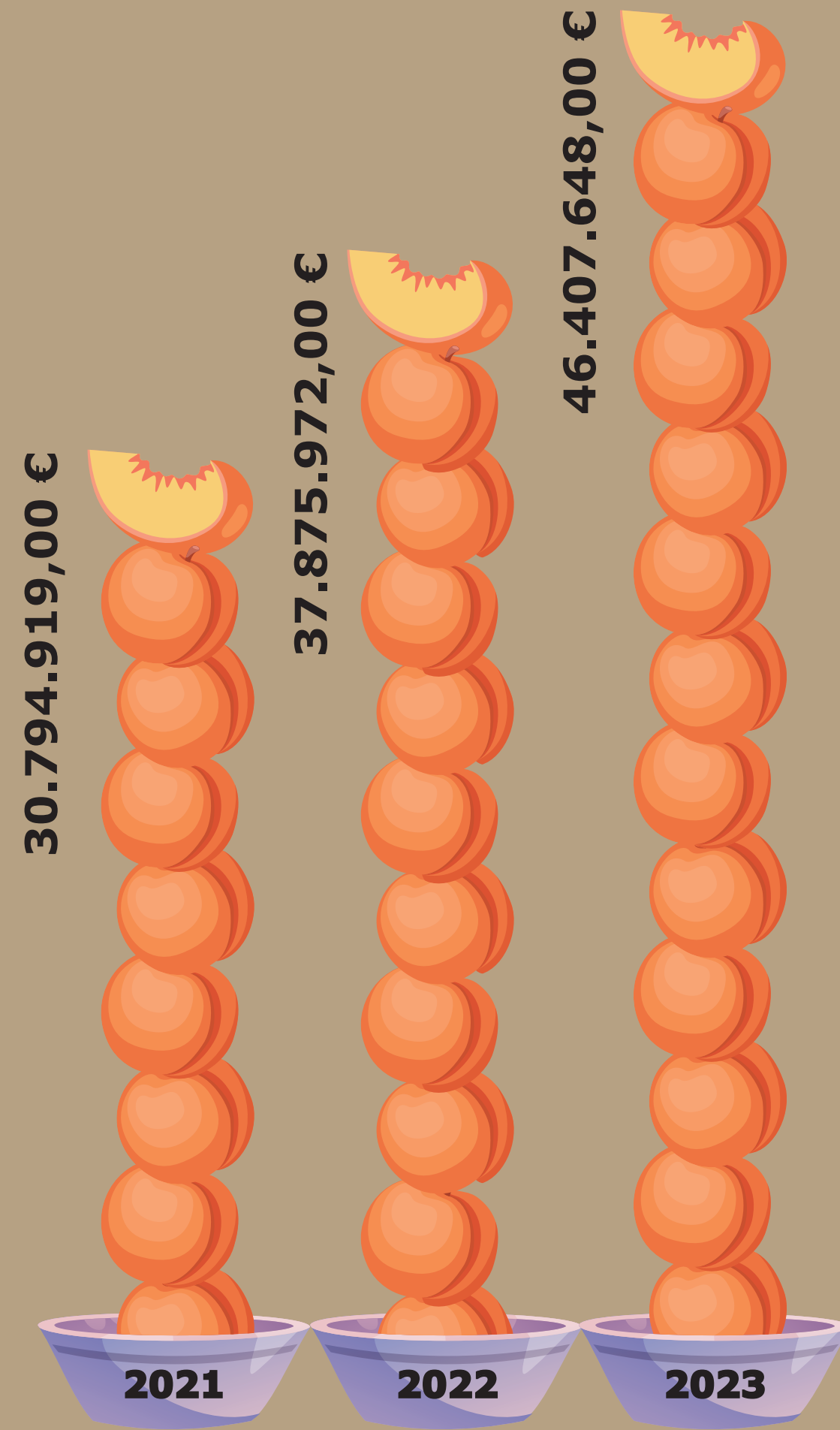
**60.000+ tons/year ≈
36 million cans/year
5 million jars/year**



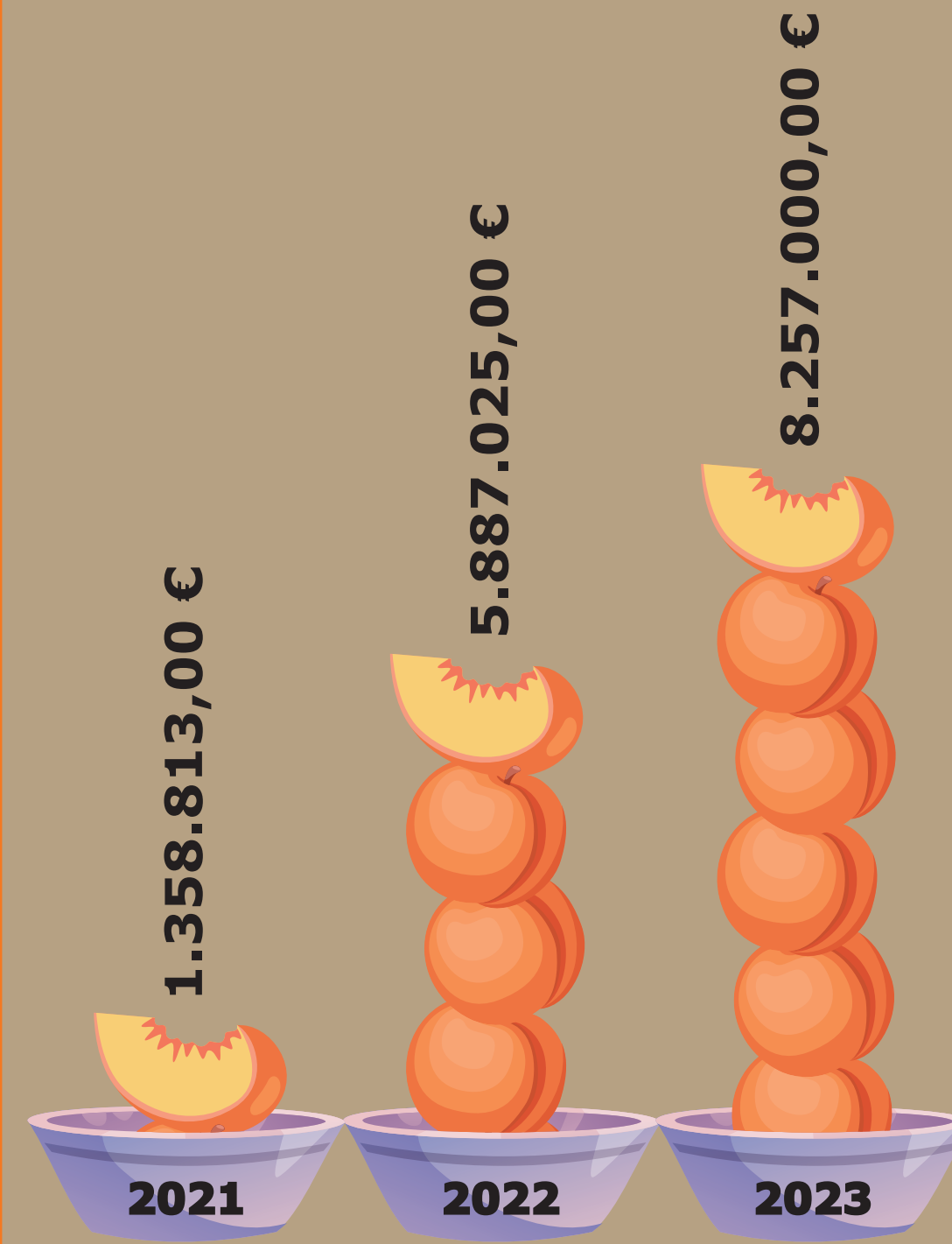
STAFF & WORKERS

**90 people
permanent staff, up to
680 during production
(average 220 people)**

FINANCIAL DATA – 3 YEARS



TURNOVER



EBITDA



INVESTMENTS

STRENGTHS

- **Access** to major ports for **exports**
- **Freshness** due to the short path from **harvesting to packing**
- High experience in **exporting worldwide**
- **Flexibility**
- Strong business partner International Group
I. Schroeder KG



WORLDWIDE EXPORTS



FALANI



OUR CERTIFICATES & AWARDS

CERTIFICATES



AWARDS



SUSTAINABILITY

Food processing

Peaches, Apricots, Pears, Kiwis, Fruit cocktail, marmalades, fruit puree, compotes, gruetze, cherries, olives, fruit cups, pickled vegetables.

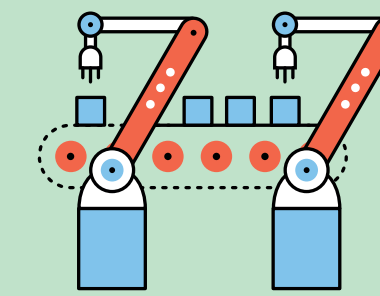
2 new production lines
(tomato paste in tubes & green peppers in pouches).

Our approach for sustainability



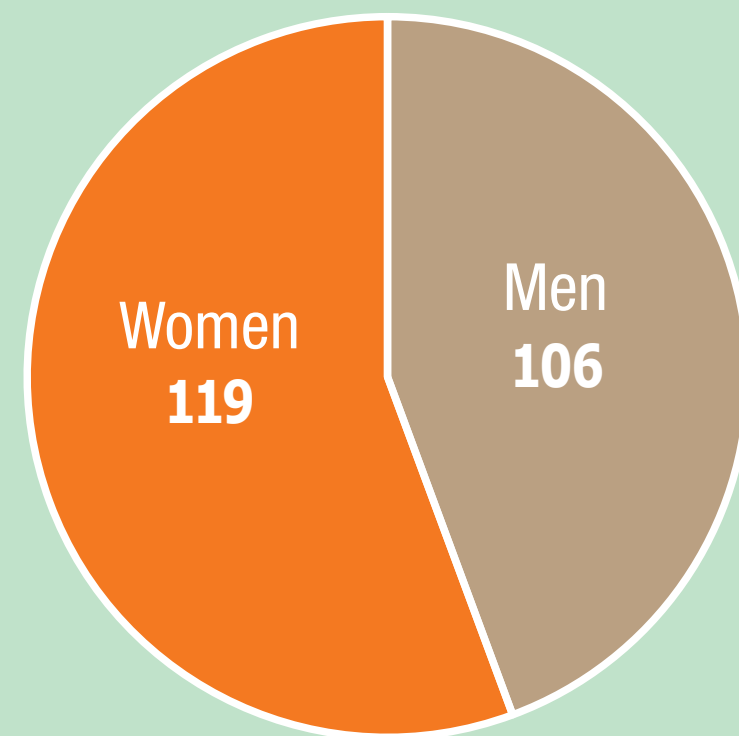
Fostering social responsibility
Caring for the environment
Supporting consumers health
Reducing CO₂ footprint

Total production volume (€)

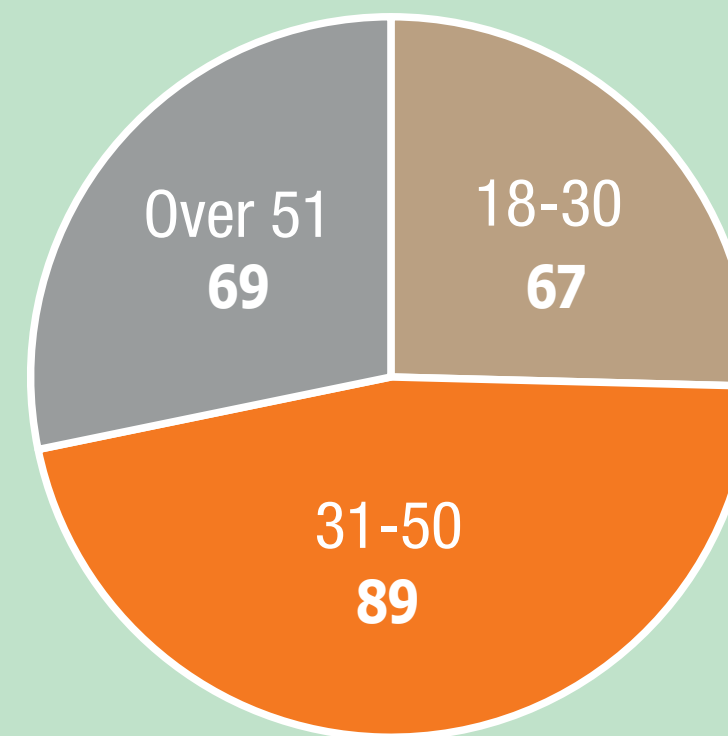


2021: 30.794.919
2022: 37.875.972
2023: 46.407.648

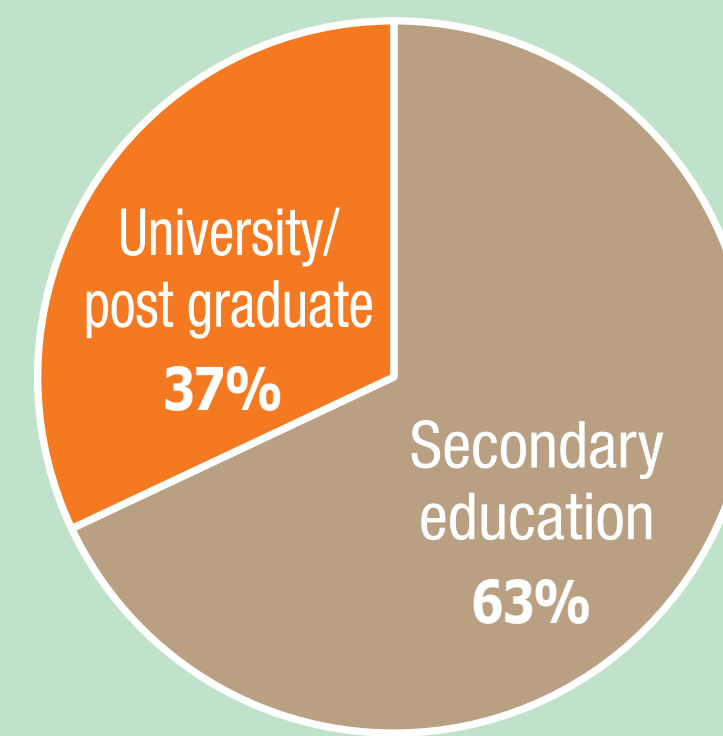
Employees



Gender



Age



Education

SUSTAINABILITY



Zero Waste to Landfill
99,12% (platinum level).
Reuse, recycle, energy production.

100%

of our liquid waste is biologically treated

Renewable energy

60% of electricity comes from renewable energy sources
photovoltaic park 1MW installed

Schneider Electric Power Monitoring Expert

100%

of our organic waste is generated for biogas production

100%

replacement of old light bulbs with new low-energy light bulb technology (LED)

Minimizing our climate impact

transport trucks Euro 5, Euro 6, resulting in 50% reduction in CO₂ emissions



29% CO₂ ↓ by using natural gas

Collective alternative management system



ESG Certificate

(Score B)

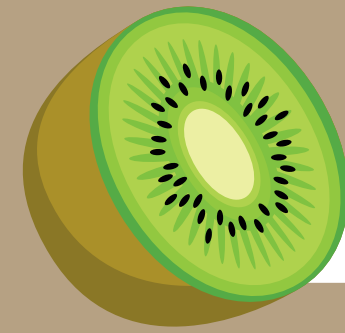
ISO 14001
SMETA 4 PILAR

EPD

Environmental Product Declaration
0,79 kg CO₂ / kg canned peaches



PACKING SEASON



KIWI

NOV



OLIVES

JAN | FEB | MAR | APR



PEACHES

JUL | AUG | SEP



PRESERVES

JAN | FEB | MAR | APR
MAY | JUN | SEPT | OCT
NOV | DEC



FRUIT COCKTAIL

SEP



APRICOTS

JUN | JUL



PEARS

OCT | NOV

FRUIT IN PLASTIC CAPS

JAN | FEB | MAR | APR
MAY | JUN | SEPT | OCT
NOV | DEC

OLIVES IN PLASTIC CAPS

JAN | FEB | MAR | APR
MAY | JUN | SEPT | OCT
NOV | DEC

PRODUCTS

**PEACH &
APRICOT PUREE**
(single strength &
concentrated)



KIWIS
(slices)



**MARMALADES
CONFITURES**



APRICOTS
(halves)



**RED &
YELLOW
FRUITS**



OLIVES
(pitted, unpitted,
stuffed)



PEACHES
(halves, slices,
dices)



**FRUIT
COCKTAIL**



MAIN PACKAGING

CANS:

425ml, 580ml, 850ml, 2650ml (A9),
3100ml (A10), 4250ml (A12)

- PEACH HALVES & SLICES
- PEACH DICES & IRREGULAR DICES
- APRICOT
- FRUIT COCKTAIL
- KIWIS



MAIN PACKAGING

GLASS JARS:

370ml, 425ml, 580ml, 720ml, 1062ml, 1700ml

PEACH HALVES

in light syrup, in syrup, in water or in juice

- with vanilla
- with amaretto flavor and almond
- with cinnamon
- with passion fruit juice
- with coconut flavor and pineapple juice
- with lemon juice / lemon slice
- with orange juice / orange slice
- with coffee beans and vanilla flavor
- with ginger flavor

PEACH HALVES

with artificial sweeteners



MAIN PACKAGING

GLASS JARS:

370ml, 425ml, 580ml, 720ml, 1062ml, 1700ml

APRICOT HALVES

in light syrup, in syrup, in water or in juice

BLUEBERRIES *in light syrup or in syrup*

FRUIT COCKTAIL

in light syrup, in syrup, in water or in juice

RED FRUITS MIXED

in light syrup or in syrup

OLIVES *in brine*

CHERRIES

in light syrup or in syrup

PLUMS WHOLE & HALVES



MAIN PACKAGING

PLASTIC CUPS IN SLEEVES

4x120g & 2x120g

RED & YELLOW FRUITS

FRUIT COCKTAILS

OLIVES

- Pitted
- Unpitted
- Stuffed



FRUITS WITH ALCOHOL

GLASS JAR:

RED FRUITS IN RED WINE

in glass jars of 580ml orcio

FRUIT COCKTAIL WITH WHITE WINE

in glass jars of 580ml orcio

RUMTOPF

in glass jars of 580ml & 1700ml orcio

CHERRIES WITH TSIPOURO

in glass jars of 580ml orcio



ALTERNATIVE SUGGESTIONS

GLASS JAR:

GOURMET PEACHES WITH TEA

in glass jars of 580ml orcio

GOURMET PEACHES WITH COFFEE BEANS

in glass jars of 580ml orcio



SAUCES

GLASS JAR:

MUSTARD SAUCES:

- With fig
- With apricot
- With orange



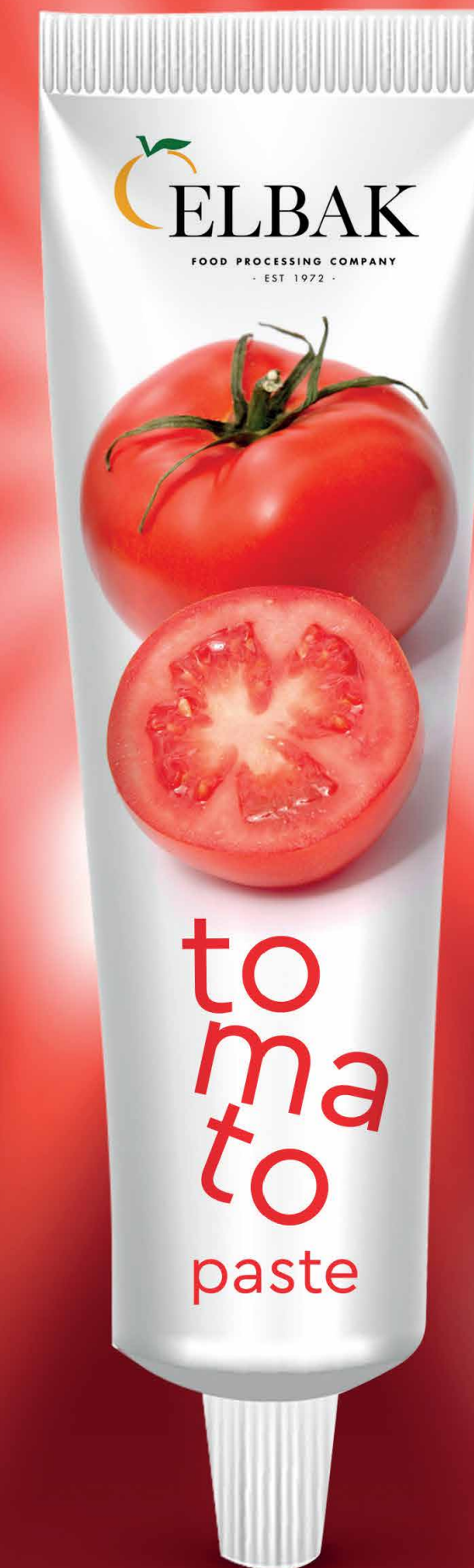
NEW PRODUCTS

TOMATO PASTE
IN TUBE 200g

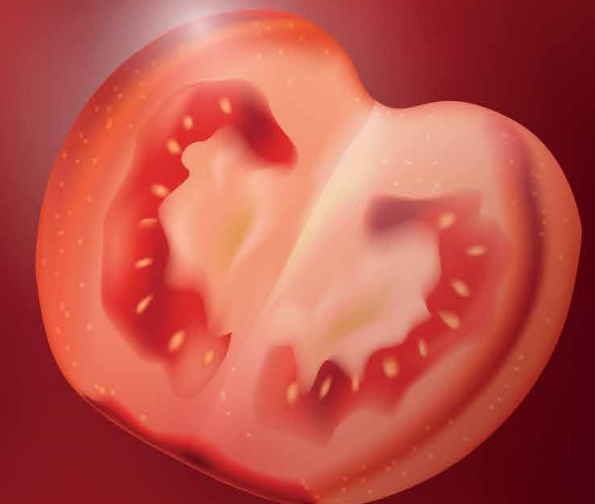


Tomato paste

triple concentrated | 200 g | In tube



Available
also organic



NEW PRODUCTS

GREEN PEPPERS
IN POUCH 200g



green peppers in brine



STRONG COLLABORATIONS WORLDWIDE





FOOD PROCESSING COMPANY
- EST 1972 -

ELBAK S.A.
GREEK CANNING
INDUSTRY

Factory Address:

5.5 km Larissas Falanis Road,
41500 Larissa, Greece

Tel.: +30 2410 549 550

E-mail: peach@elbak.gr

 ELBAK  ELBAK SA  elbak.sa