



The easy to use software for windows, doors and curtain walls

Index

ProF2 Suite	01
ProF2	04
Design Environment	
Uw Calculation and CE Marking	
Order Management	
Grid price lists	
Profiles archives	
Warehouse Management and Orders to Suppliers	
Cutting Optimisation	
Machines Integration	
Features of ProF2 versions	
▼ Internal - External Sales	
ProF2 PLM	08
Internal sales management	
Features of ProF2 PLM versions	
ProF2 Showroom	10
Features of ProF2 Showroom	
▼ Technical Area	
ProSky	11
Features of ProSky versions	
Pro2D	12
Features of Pro2D	
▼ Production	
ProF2 CAM	13
Features of ProF2 CAM	
FST Track	14
Features of FST Track	
ProPlan	15
Features of ProPlan	
Labelling Systems	16
Shipping Label Kit	
Piece Label Kit	
CE and identification label kit	
Portal www.serramentice.it	
▼ Assembly	
FST Job	17
Features of FST Job	
▼ Administration	
ProGè	18
Features of ProGè	

ProF2 Suite



ProF2 Suite was launched as a solution to meet all the requirements of the door and window frame industry. It consists of several integrated products that manage design, quotation, assembly, production control, CE marking, cutting list calculation and machining.

- Pro F2** Door and window frame management, quotations, production lists, data transfer to machines, barcode production, Uw calculation and regulatory management.
- Pro F2^{PLM}** Creation of grid price lists and definition of the rules of commercial configurator.
- Pro F2^{SR}** ProF2 version dedicated to showrooms and agents; it uses the commercial configurator.
- Pro Sky** Management of curtain walls, quotations and production lists.
- Pro 2D** Optimization of panel and glazing cutting.
- Pro F2^{cam}** Centralized management of the machining archive.
- FST Track** Detection of production times and monitoring of production progress.
- Pro Plan** Planning of order production.
- FST Job** Support to the operator during the assembly phases.
- Pro Gè** Management of order confirmations, transport documents, invoices and assets and liabilities schedule.



INTERNAL SALES

EXTERNAL SALES

ADMINISTRATION



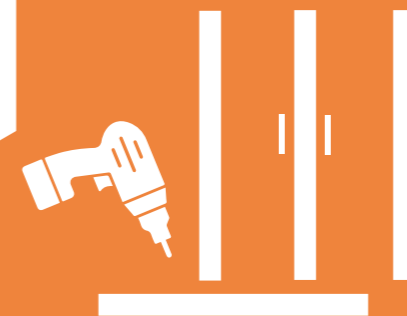
TECHNICAL AREA



PRODUCTION



ASSEMBLY





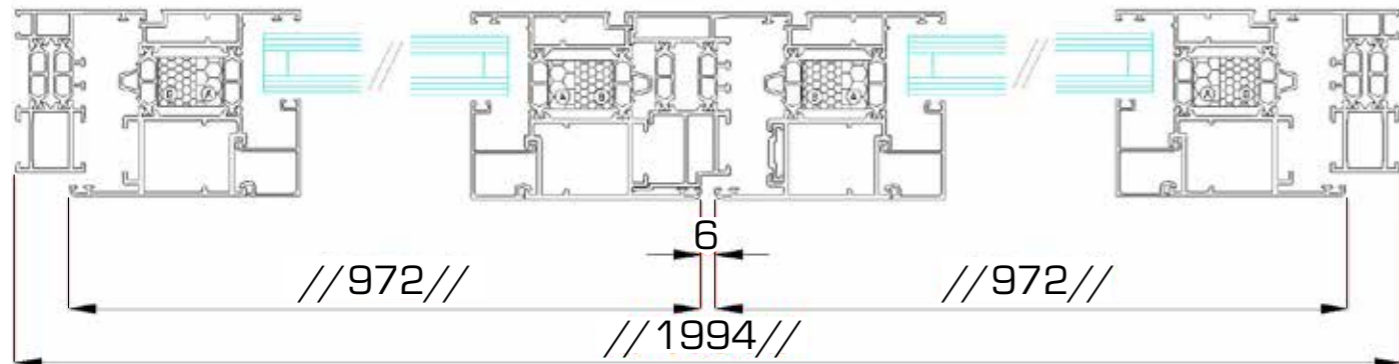
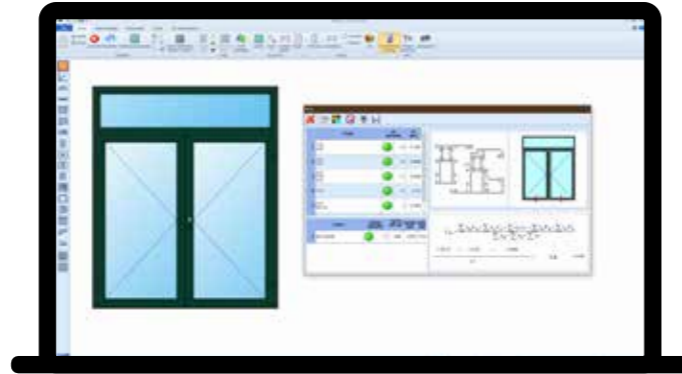
ProF2

Pro F2

Available in four versions, ProF2 is the ideal solution for the management of door and window frames manufacturers. The fully scalable versions allow easy product upgrades that follow the growth of your business.

Design Environment

ProF2 can make any type of frame: rectangular, polygonal or arched, made of aluminium, PVC, steel or aluminium-wood systems. The CAD-based design environment allows the operator to design the door and window frames in internal or external view, generate sections and nodes or images of frames that can be exported to DXF or DWG. The 3D view shows the operator all the details of the frame, including machining. ProF2 displays the Uw value, the profile and glazing cutting list, and the list of accessories directly in the design environment; these can then be inserted in parameter or optional mode, depending on the size and weight of the frame.



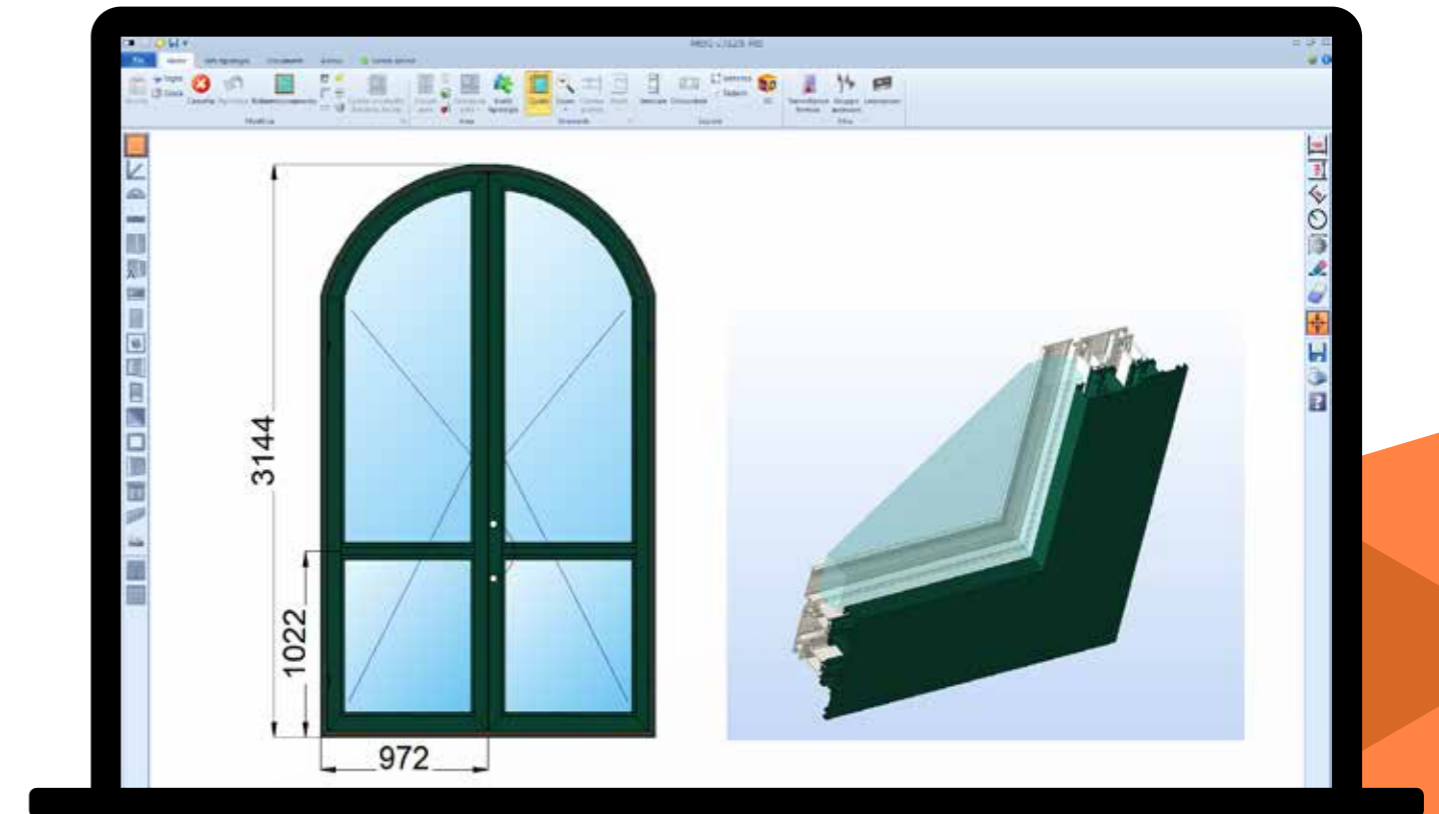
Uw Calculation and CE Marking

A modern business must also comply with current regulations, which is why ProF2 features an area dedicated to:

- Uw Calculation and verification of the limits according to the climate zone
- Management of Initial Type Tests (ITT) including verification of extensibility
- Printing of the EC declaration of performance
- Management and printing of the FPC production control plan
- Printing of declarations of conformity for tax bonuses

Order Management

ProF2 easily and accurately analyses the production costs of a frame or of an order for door and window frames, calculating the material and the time it takes to complete it. ProF2 can also calculate the analytical selling price of each frame based on the cost of production. Several options allow the operator to customise the layout of the technical labels for production and quotations, which can be viewed, printed or exported to Word®, Excel® and PDF.





Grid Price Lists

ProF2 calculates grid price lists by setting the dimension and steps for each type of frame. The price lists can be printed or exported to Excel®.

Profile Archive

An FST archive, with more than a thousand ready-to-use series of profiles, makes starting up ProF2 in your company fast. The archives are open and new systems can easily be added independently. On request, FST can develop new ones.

Warehouse Management and Orders to Suppliers

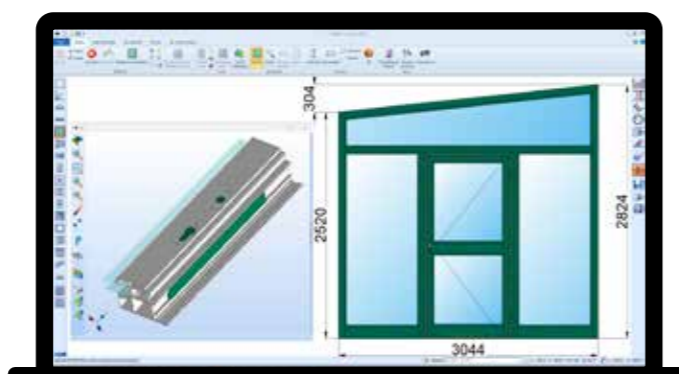
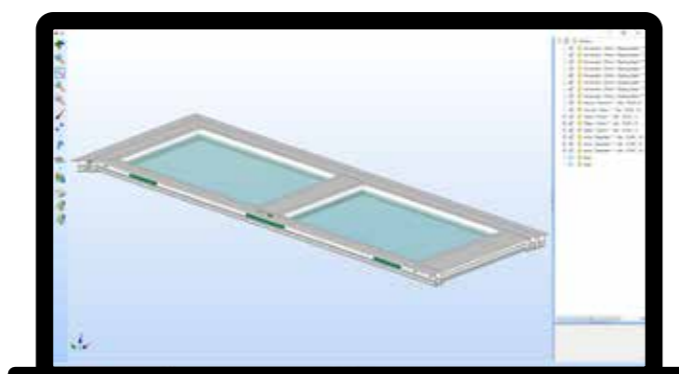
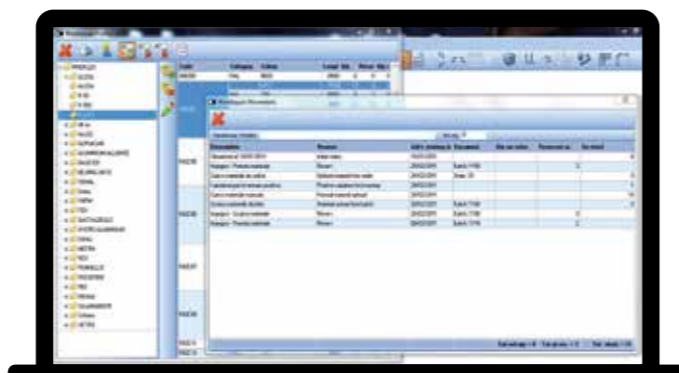
Starting from a production batch, you are just a click away from managing the work and the unloading of the material from your warehouse. ProF2 automatically stores production-generated profile offcuts and reuses them in new orders.

Cutting Optimisation

In order to minimize the waste of the bar, ProF2 considers multiple factors, such as: different bar lengths, offcuts, reversibility, aggregation in sets, or optimum bar length search, and always offers the best possible cutting sequence.

Machines Integration

ProF2 transfers all production information to the machines in the workshop, such as trimmers, machining centres, welding machines, polishing machines or automatic assembly benches. The barcode generated by ProF2 identifies the part at all stages of the process.



Features of ProF2 versions:

	OPEN	LT	STD	PRO
Guided design of rectangular frames	▼	▼	▼	▼
Frame scale design in CAD 2D	▼	▼	▼	▼
Insertion of transoms and mullions	▼	▼	▼	▼
Cutting list optimization	▼	▼	▼	▼
Printing and calculation of quotations and cutting lists	▼	▼	▼	▼
Analysis of production costs	▼	▼	▼	▼
Insertion of automatic / manual dimensions	▼	▼	▼	▼
Management of compound profiles (e.g. wood / aluminium, PVC)	▼	▼	▼	▼
Management of accessories, groups of parametric and optional accessories	▼	▼	▼	▼
Export of prints to Word®, Excel®, or PDF	▼	▼	▼	▼
Export of images, glazing and panels to DXF or DWG	▼	▼	▼	▼
Export of cutting lists to trimmers via FOM protocol	▼	▼	▼	▼
View of the sections in CAD environment	▼	▼	▼	▼
Export of sections to DXF or DWG	▼	▼	▼	▼
Calculation of the thermal transmittance of the Uw frame	▼	▼	▼	▼
Handling of CE documentation and FPC control plan	▼	▼	▼	▼
Guided creation of frames with 3/4/5 polygonal sides		▼	▼	▼
Inserting oblique transoms		▼	▼	▼
Manual management of the profile offcuts		▼	▼	▼
Connection driver with non-FOM trimmers		▼	▼	▼
Grid price list calculation module (PLM Base)		▼	▼	▼
Use of categories and lists created with PLM		▼	▼	▼
Guided composition of frames with arches			▼	▼
Definition of frames of any shape, even with curved sides			▼	▼
Management of the stock of profiles, accessories and orders to suppliers			▼	▼
Automatic management of the offcut warehouse			▼	▼
Advanced features for the design of banded frames			▼	▼
Advanced optimization and optimum bar length search			▼	▼
3D rendering of the frame and export to STL			▼	▼
Automatic import of the machining list from FOM software				▼
Graphic interface for connecting of the processing to the typology				▼
Machining assignment based on the profile or accessory used				▼
Export of list to work centres or lines via FOM protocol				▼



ProF2 PLM Pro F2

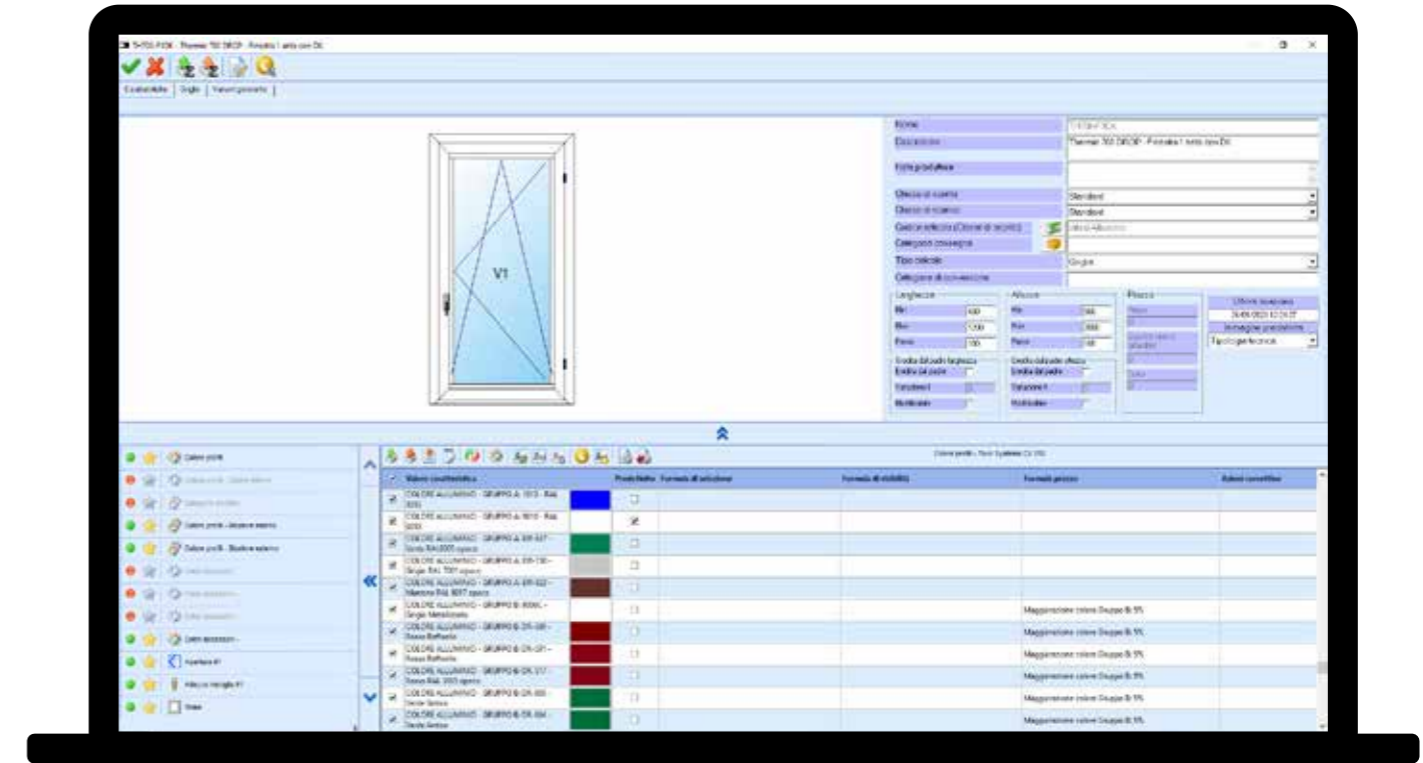
PLM is the solution by FST for managing grid price lists, and is available in two versions. The basic version of PLM, included in ProF2 from the LT version, analytically calculates the price grid and exports it to PDF or EXCEL®.

In the full version, PLM is a powerful commercial configurator capable of analysing the categories and offering the user all the possible technical variants, such as colours, alternative glazing, optional accessories, additional strips and plinths, and possible openings. Each variant identified by the system or entered by the user can be assigned a calculated

price variation according to different rules. With PLM, it is possible to create a price list for any type of frame produced by the company (aluminium, PVC, iron, wood-aluminium, etc.) and also for marketed products such as gates, internal doors, mosquito nets, rolling shutter boxes or frames not produced in-house.

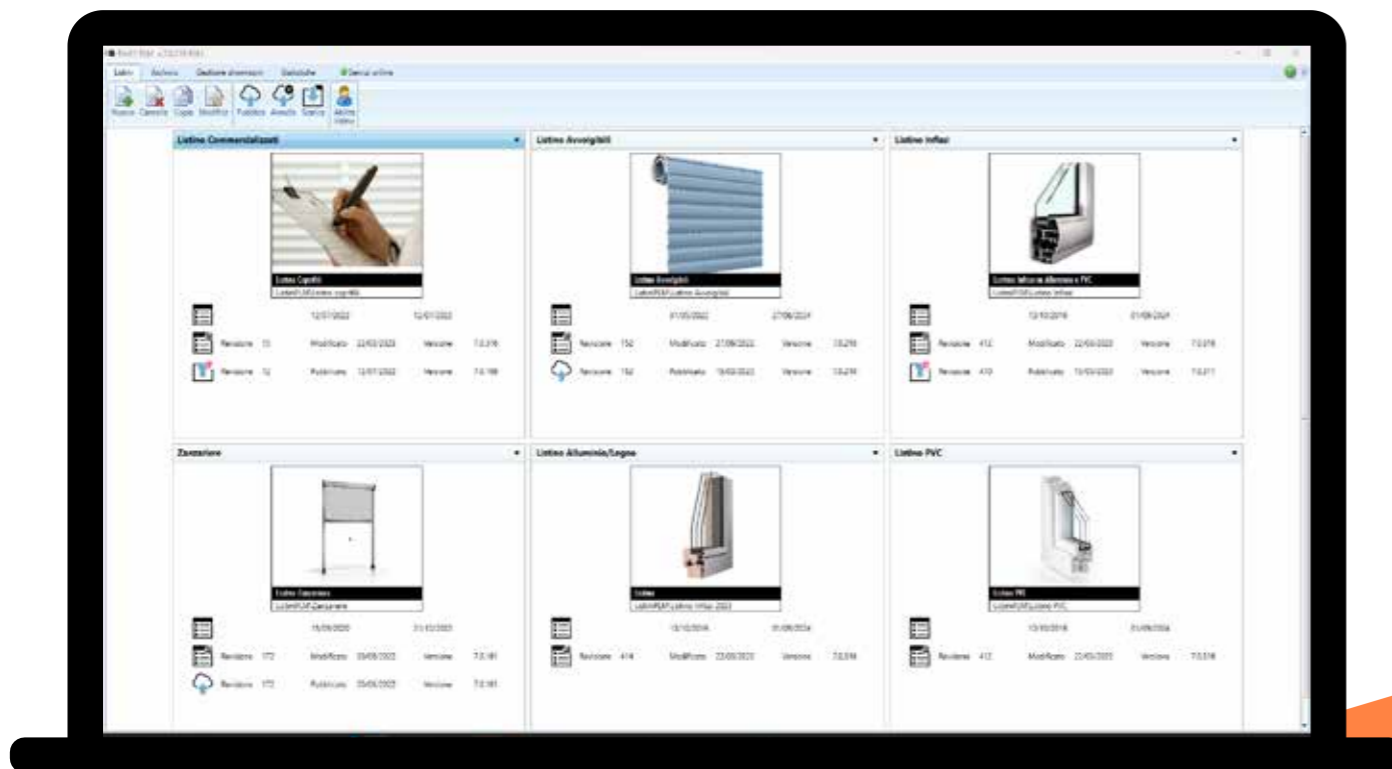
Internal Sales Management

Price lists created with PLM can be used internally by the company to prepare sales quotations using ProF2. The price list categories are automatically converted into technical categories for production and cost analysis to be compared with the analytical price. For maximum flexibility, it is possible to include in the same offer both frames whose price is calculated according to the rules of the commercial price list, and frames created in the technical design environment, whose selling price is calculated in analytical mode.



Features of ProF2 PLM versions:

	Base	Full
Calculation of the price grid with analytical method	✓	✓
Printing of the price list and export to PDF or Excel®	✓	✓
Management of grid price lists, linear or by square metre		✓
Creation of price lists for marketed items		✓
Definition of the item configuration variants		✓
Definition of the rules for calculating the sales price according to the variants		✓
Export of price lists to file		✓
Automatic upload of price list updates with FST Cloud service		✓

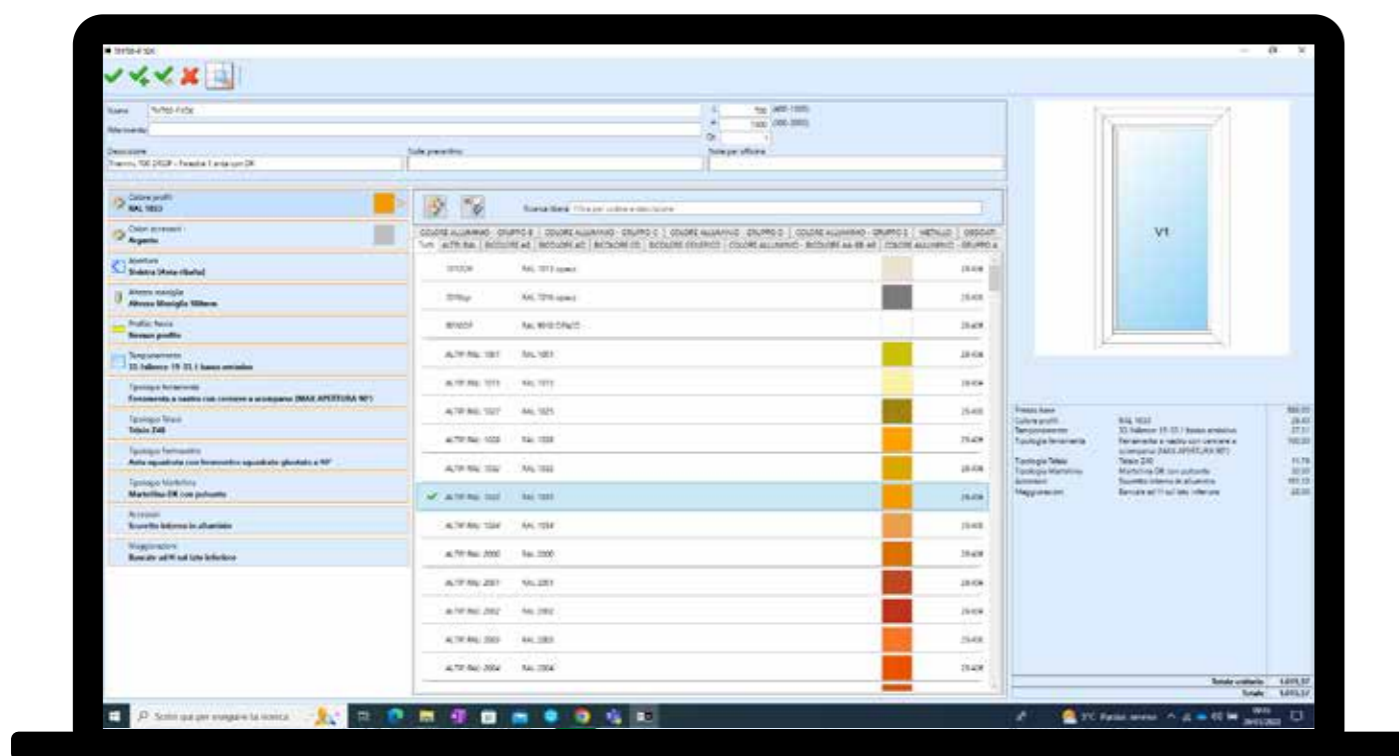




ProF2 Showroom Pro F2 SR

The Showroom version of ProF2, designed specifically for managing external sales networks, generates quotations using the price lists generated by the PLM module.

Orders collected by the sales network are transferred to the company to be automatically converted into production orders. The FST Cloud service keeps the price lists for all Showroom programmes up to date and automatically transmits orders to the manufacturer.



Features of ProF2 Showroom:

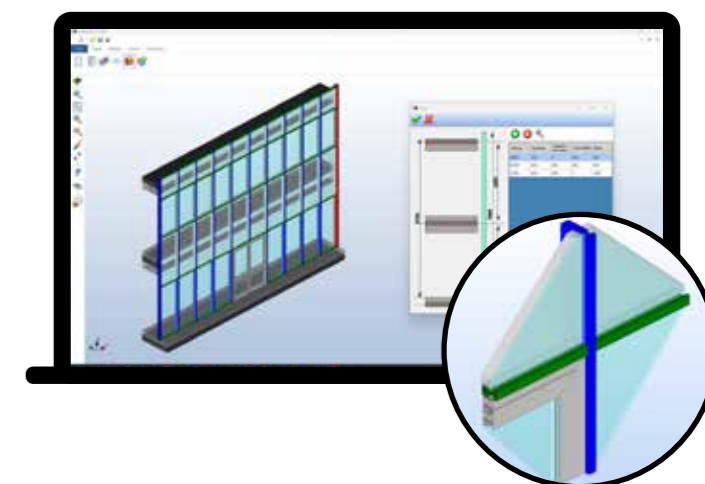
- Drafting of offers and orders in a single application
- Fewer configuration and pricing errors
- Updated price lists via Cloud FST
- Automatic transmission of orders to the manufacturer
- Synchronisation of order status and delivery date with the manufacturer



ProSky Pro Sky

Available in two versions, ProSky is a module of the ProF2 dedicated to the management of flat curtain walls.

Through the guided interface, the operator can quickly define the structure of the curtain wall. Subsequently, with a few clicks, doors, openings and fixed parts can be inserted. The design in the CAD environment allows a realistic view of the curtain walls and the export of the drawings in DXF or DWG format.



Features of ProSky versions:

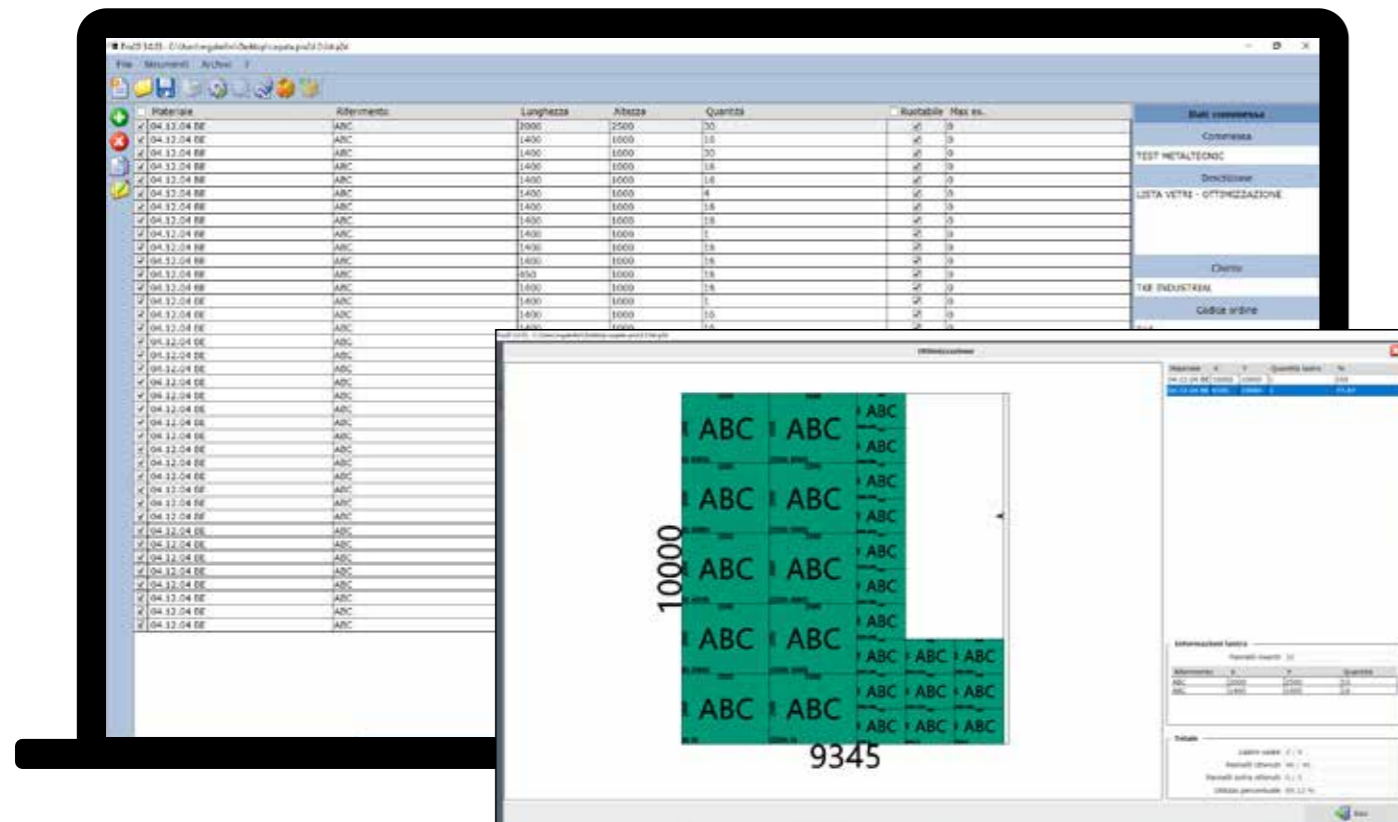
	STD	PRO
Design in CAD 3D environment	✓	✓
Management of rectangular structures	✓	✓
Graphic management of the position of floors	✓	✓
Graphic management of the position of crosspieces and uprights	✓	✓
Guided composition of the mullion/transom node	✓	✓
Accessory management, including brackets for attachment to floors	✓	✓
Calculation of the quotation	✓	✓
Calculation of materials (profiles, accessories, glazing/panels, etc.)	✓	✓
Automatic import of machining list (macros) from FST and FOM programmes		✓
Graphic interface for connecting of the processing to the typology		✓
Automatic assignment of processing based on the profile or accessory to be used		✓
Export of work-lists to machining centres or workstations via FST/FOM Industrie protocol		✓



Pro2D Pro 2D

Pro2D optimises panel and glazing cutting and can be used individually or integrated with ProF2.

The program calculates the cutting to be carried out according to the size of the available panes. Any reusable excess material is automatically stored for later use. The printed documentation shows the operator the cutting sequence for each panel.



Features of Pro2D:

- Flat optimisation of rectangular shapes
- Guillotine or nested optimisation criterion
- Materials management with or without venation
- Panels warehouse
- Automatic loading/unloading of panels from the warehouse
- Print layout optimisation
- Automatic import of orders from ProF2

ProF2 CAM Pro F2

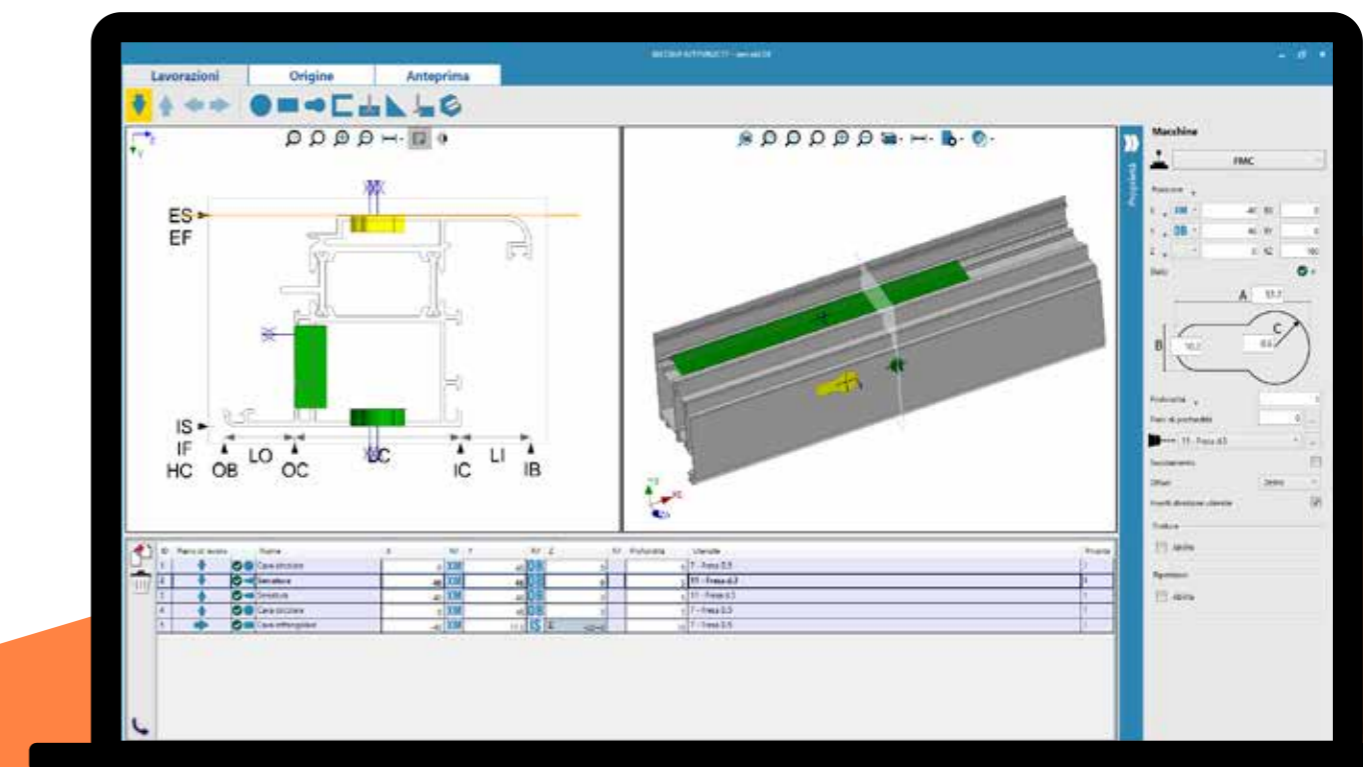
ProF2 CAM, specifically designed for the door and window frame sector, manages a single machining archive common to all machines from the office.

Unlike conventional CAMs, ProF2 CAM allows the user to restrict the position or depth of machining to all known points of ProF2 such as slots or profile chambers, making it easy to assign the same machining to multiple profiles even if their shapes are different. Essential for companies that use multiple machining centres, the machining

management system also reduces the programming and maintenance time of the archives for companies that use a single machining centre. ProF2 Cam is compatible with all the machining centres or lines produced by Fom Industrie. Additional modules are available on request, allowing data to be exported to the main machining centres on the market.

Features of ProF2 CAM:

- Machining shared by multiple profiles
- Use of ProF2 profile specifications for anchor points
- 3D machining design
- 3D machining simulation
- Multi-machine machining archive
- Compatible with the leading machining centres

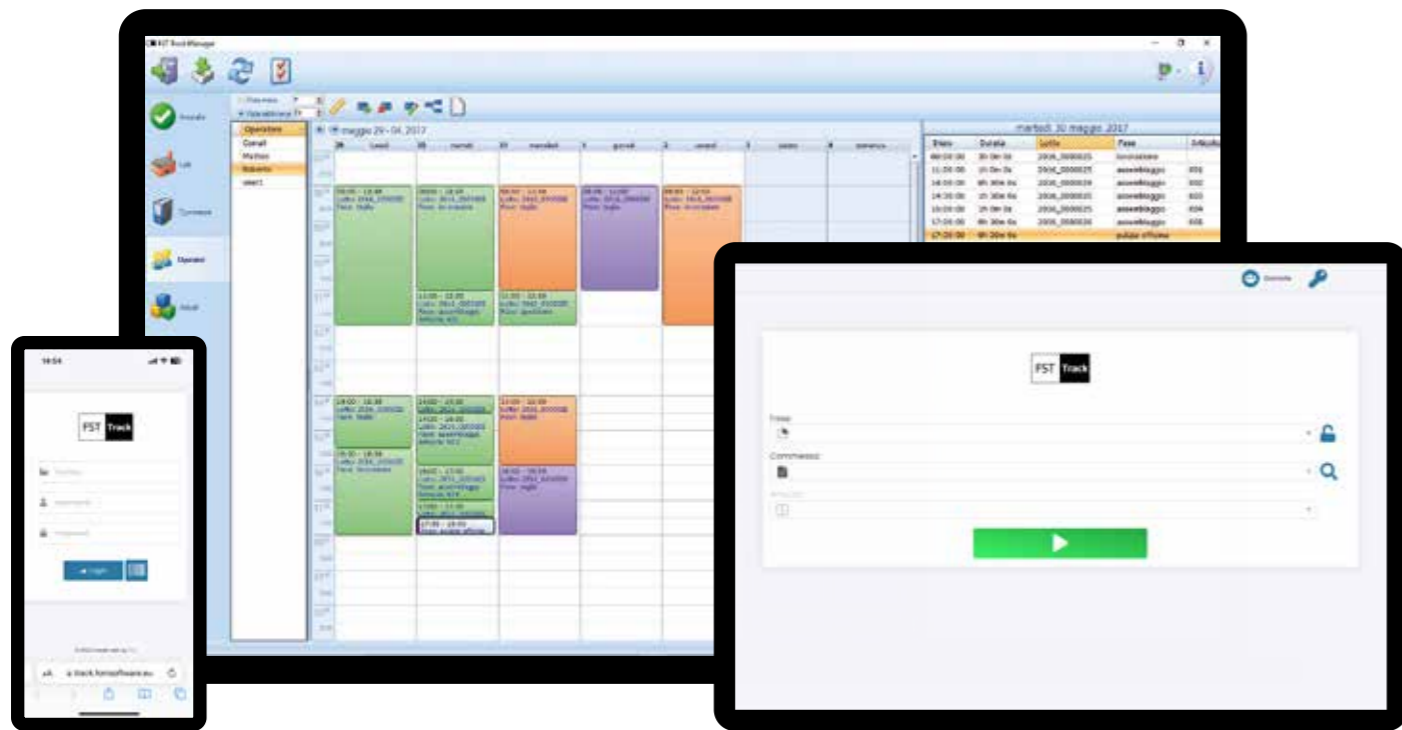


FST Track



Perfectly integrated with ProF2, FST Track allows to check the progress of each work phase for each order from the office.

The user may decide to record the working time of each step or to report only those steps that have been completed. The operator view shows which phases each operator has worked on and for how long. At the end of the job order, FST Track shows the production times divided by product type.



Features of FST Track:

- Graphic representation of orders and their status
- Weekly/daily view of the operator's activities
- Custom definition of production stages
- Monitoring of progress by item or global activity
- Summary of machining times or progress
- Automatic import of production progress data from prepared machines
- Web-based data entry interface that can be used from smart-phones, tablets or PCs

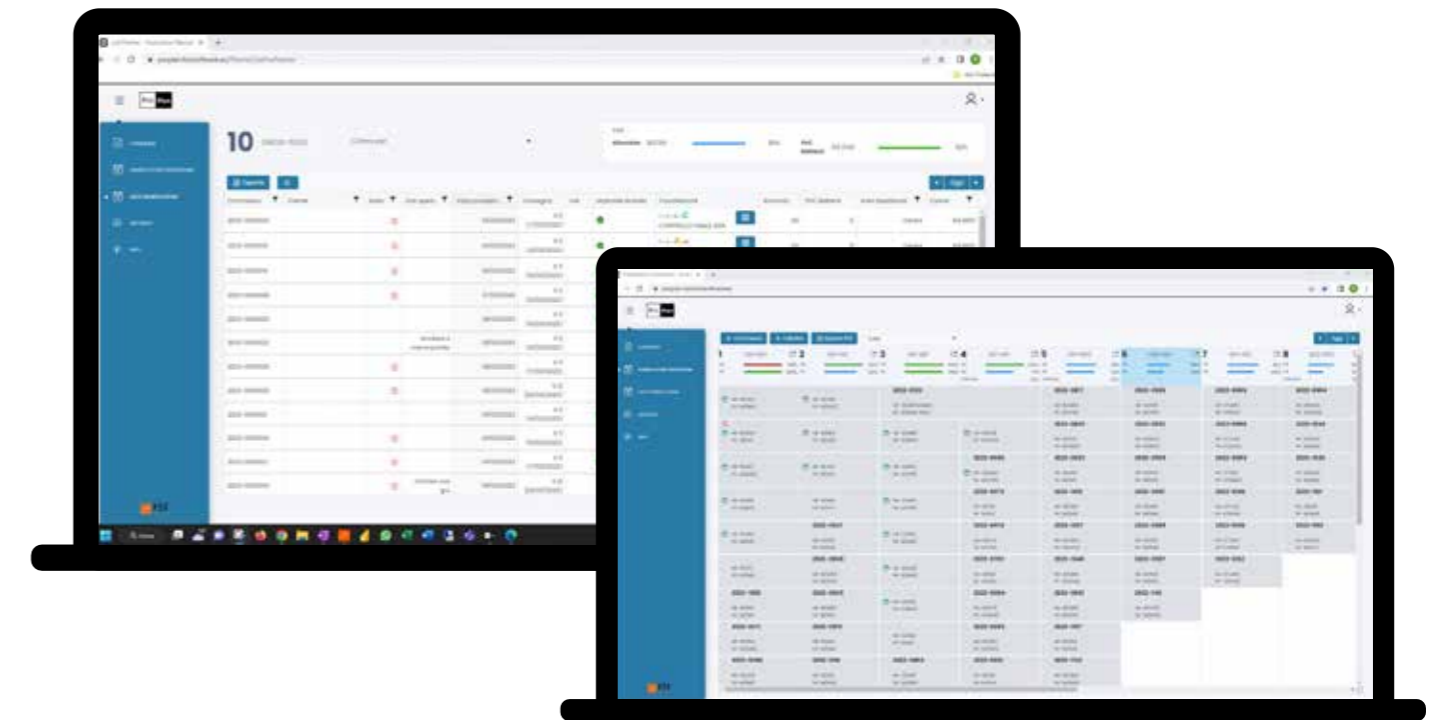
ProPlan



ProPlan plans production on a weekly basis, assessing the workload for each production line.

The tabs representing the work orders are customisable by the user and can be moved between weeks using the drag&drop function. Whenever new orders are changed or added, ProPlan graphically displays the weekly workload allocated to the production lines. Using the weekly schedule, production orders can

be planned, analysed and grouped on a daily basis according to their characteristics such as: profile series, colour, place of delivery, means of delivery, etc. When integrated with FST Track, ProPlan shows the production progress of each order, thus becoming an integrated tool for production management and control.



Features of ProPlan:

- Web-based interface
- Integrated with ProF2
- Management of several production lines
- Weekly view of orders, editable by means of the drag and drop function
- Display of production load per week and per production line
- Display of the production value
- Detailed production planning for the week
- Grouping of weekly orders by: colour, delivery area, carrier, etc.

Labelling Systems

Shipping Label Kit

The kit produces an A6 format label containing information for the delivery and installation of door and window frames. The kit includes a labeller and software.

Piece Label Kit

The kit produces a label for each piece on a roll, sorting them by "profile code" and following the order of the optimised cutting list. The kit includes a labeller and software.

CE and identification label kit

The kit produces a weather-proof plastic label with the CE marking data and the identification code of the frame. The kit includes a labeller and software.

Portal www.serramentice.it

Access the portal www.serramentice.it and enter the identification code of the frame to download the relevant CE documentation. By scanning the QR code with a smart-phone or tablet you can go directly to the aforementioned documentation.

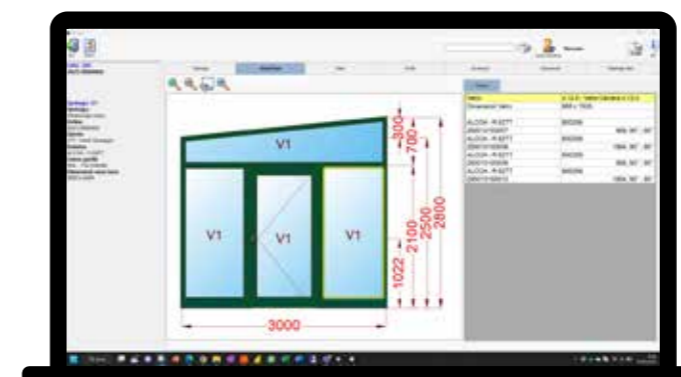


FST Job

FST Job

FST Job assists the operator in assembling the frame and replaces the paper documentation provided to workshop technicians.

The program recognizes the frame being assembled by reading the bar-code and displays the data of the sash, glazing and accessories. Any update or modification to the frame design is immediately available in the workshop.



Features of FST Job:

Typology identification starting from the barcode of any element

Zoom and CAD drawing to display also large frames

Displaying of the vertical and horizontal section of the typology

Displaying of the accessories envisaged for the typology

Displaying of glass measurements and their position on the typology

Graphical interface that can also be used on touchscreens

Display of the list of pieces for assembling the frame

Recording of FPC controls for assembly

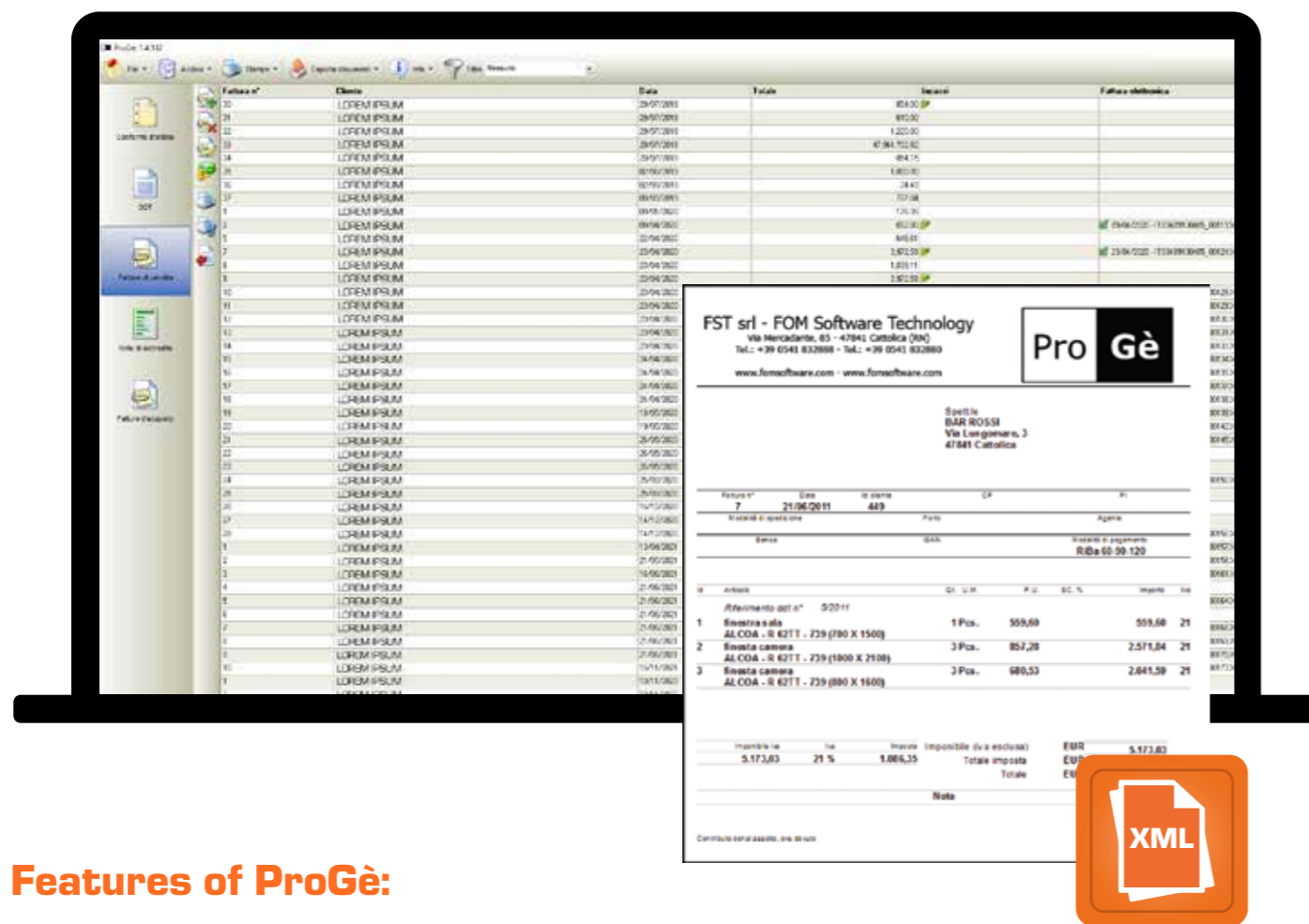
Printing of label for CE marking

Printing of shipping label

ProGè Pro Gè

ProGè imports data directly from a ProF2 quotation as well as data manually entered and generates the transport document and sales invoice.

Monthly cash outflows can also be monitored using the purchase invoice entry module. Instant and clear reports are a valuable tool for monitoring a company's economic performance.



Features of ProGè:

- Creation of Transport Documents and sales invoices
- Import of data from ProF2 quotations
- Management of payments, carriers, different destinations etc.
- Entry of purchase invoices
- Monthly assets and liabilities schedule
- Export of invoices in XML electronic format
- Printing of reports by period, customer and/or typology



03.2023_versione 1.0



FST S.r.l. Via Mercadante 85, I - 47841 Cattolica (RN), Tel. 0541.832.888

info@fomsoftware.com

www.fomsoftware.com