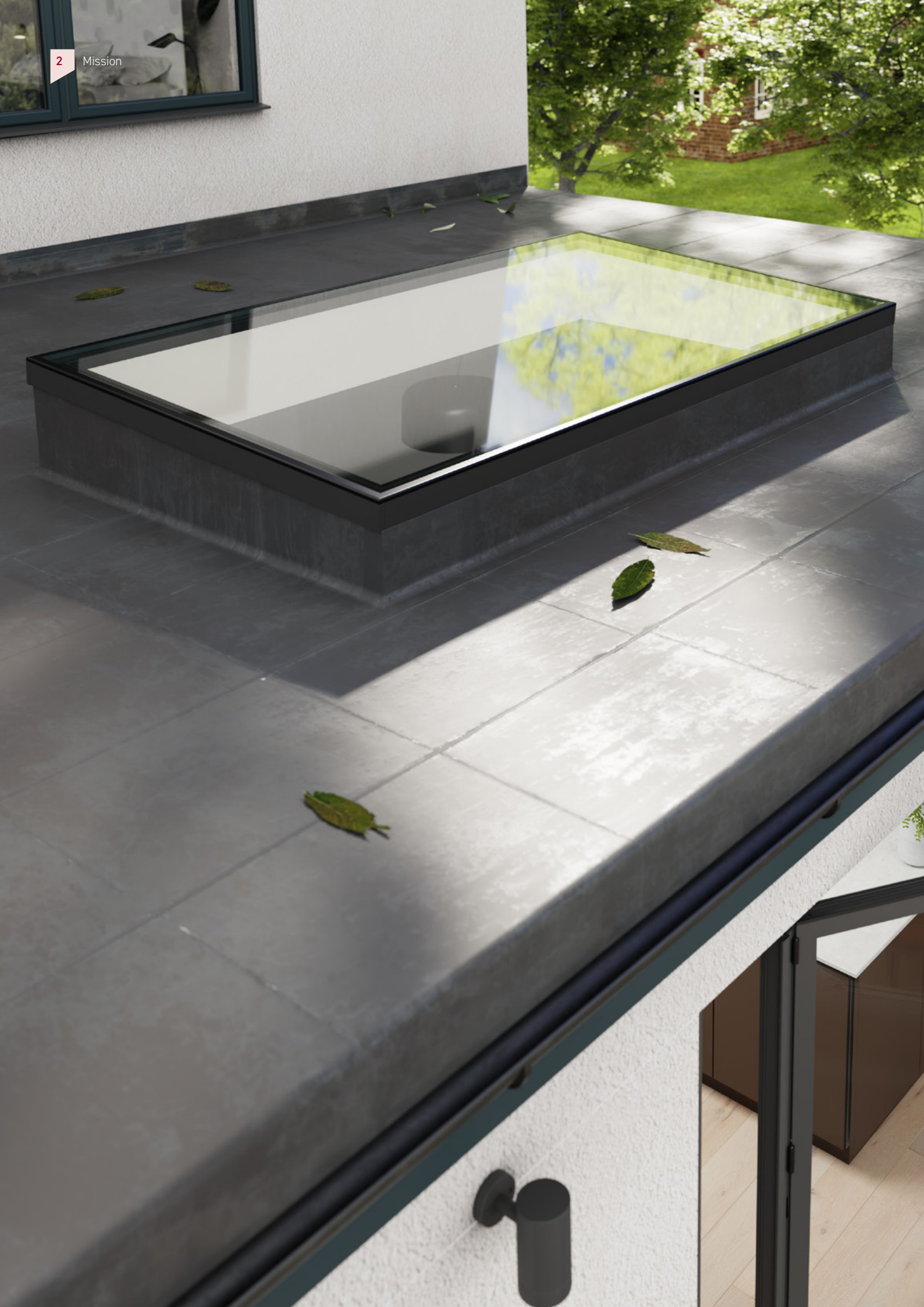




Korniche Flat Glass

making light
work for you







it's our mission to achieve your vision

Korniche was founded with the mission to bring inspirational products to light through innovative design and engineering. The Korniche Lantern was the first of its kind, a dedicated product designed from a clean sheet, using ground-breaking new technologies rather than just being another version of a conservatory roof system. The same methodology has been followed with the equally innovative Korniche bi-folding door and again with the Korniche flat glass.

Since launch these multi-award winning products have been embraced by homeowners and builders alike, and our vision is to become the first brand you go to for smarter, better engineered and inspirational glazed products.

All Korniche products are made from thermally broken and powder coated aluminium. This great looking premium material means stronger products with tighter tolerances,

superb weather resistance, high thermal performance, and minimal maintenance.

All Korniche products are manufactured exclusively by us. This means you benefit from investment in the latest fabrication methods, a clear focus on engineering excellence and industry leading quality controls, Korniche products are consistently delivered to an extremely high standard.

Built different with true innovation inside

The Korniche Flat Glass design aesthetics exude quality and class whilst under the skin, cutting edge engineering innovation offers something extra. Dive into a world where aesthetics and purpose combine.

Korniche Flat Glass stands out from the crowd with exceptional thermal efficiency, credited to the advanced polymer inner frame section entirely isolating your home from the sleek hard-wearing Aluminium outer.


Colours to reflect your style

Make Flat Glass your own with a range of available aluminium fascia colours and glass tints. Readily available stock finishes include Grey, Black, and White. Or, for a more unique touch, Korniche also offer bespoke powder coated RAL colours to order.

Complementing each colour is a black gloss bezel, meticulously framing the glass unit.

 White RAL 9910



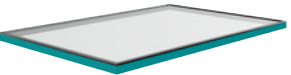
 Black RAL 9005



 Grey RAL 7016



 Bespoke RAL options



Security with proven standards

Your home's safety is non-negotiable and with Korniche Flat Glass, you're buying a product that automatically meets the stringent PAS 24:2020 standard. Our Flat Glass offers enhanced protection against intrusion.

For our design team safety is foundational. The commitment to meeting and exceeding these established benchmarks allows you to confidently choose Korniche, knowing that you're placing the safety of your home in trusted hands.

A flawless finish, that lasts

You demand a job that's completed to a showroom standard, to achieve this every Korniche Flat Glass comes with a custom finishing trim that is clipped in place once the decorating is done. It's these little details that make sure you get the best product, and the perfect look you desire.

As with all Korniche products it's fit and forget, but you never know what the future holds, so we cover you with a 10 year warranty and if the worst does happen and the glass gets damaged there is no need to redecorate thanks to our unique, easy to replace glass unit.



specification

- ✓ PAS24: 2020 security as standard
- ✓ Industry leading thermal performance
- ✓ Sizes up to 3m long and 1.7m wide*
- ✓ 28mm double or 44mm triple glazing options
- ✓ A range of self-cleaning glass options in either toughened or laminated glass
- ✓ Fascia colours:
 - Grey matt RAL 7016
 - Black matt RAL 9005
 - White gloss RAL 9910
 - Bespoke RAL or BS colours
(additional cost and lead time)
- ✓ Internal cover trim for a perfect decorated finish edge
- ✓ Designed to work with a 3-to-5 degree pitch upstand

*Maximum area is limited to 3m²

thermal performance

Insulating construction and high-performance glazing helps you save money on your energy bills and enjoy a space that you can use all year round.

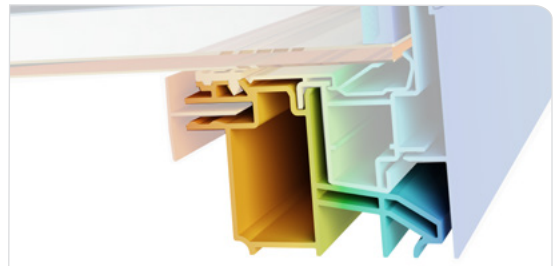
Performance glazing

Choose from double or triple glazing options and then decide if you want standard toughened glass, or perhaps add a laminated inner pane for added security. With Korniche you've got options, and whichever you choose we add an easy clean coating and high security as standard.

Glass types with a higher percentage of solar heat reflection and lower light transmission will reduce solar gain. Glazed unit options are all argon gas filled and sealed with a black warmedge spacer bar. Self-clean coatings as standard reduce dirt adhesion and decrease the need for maintenance.

U Values explained

U-Values describe how heat is transferred through a structure. Lower numbers indicate better insulation.



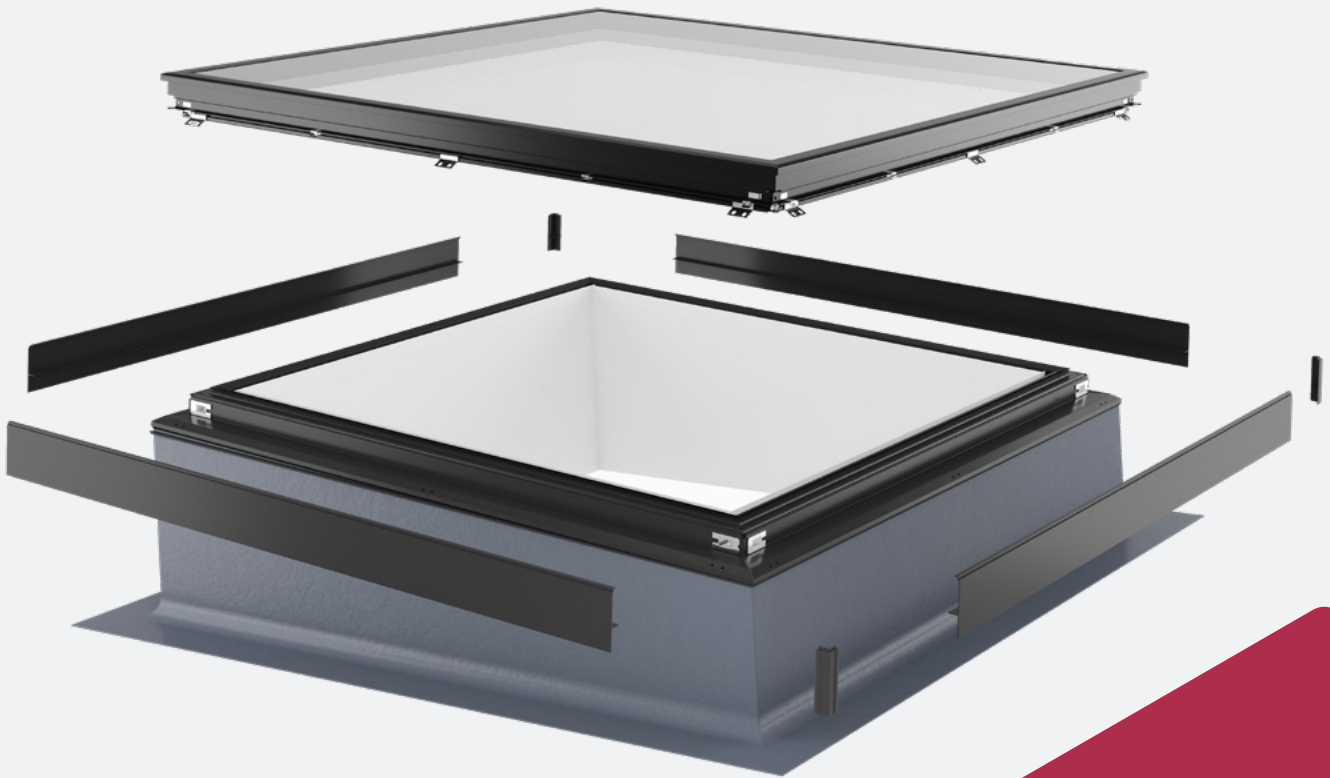
Thermal performance of the polyamide inner section, keeping the heat in and the cold out.

Double glazing Ug: 1.2
Product Ud: between 1.4 - 1.6

Premium double glazing Ug: 1.0
Product Ud: between 1.4 - 1.5

Triple glazing Ug: 0.6
Product Ud between 1.0-1.1

	CLEAR	NEUTRAL	BLUE	PREMIUM BLUE
DOUBLE GLAZING				
U Value (w/m²K)	1.2	1.2	1.2	1.0
Solar heat reflection %	39%	59%	54%	81%
Light transmission %	75%	45%	52%	20%
TRIPLE GLAZING				
U Value (w/m²K)	0.6	0.6	0.6	0.6
Solar heat reflection %	44%	65%	60%	83%
Light transmission %	70%	41%	47%	18%



Easy installation with unique replaceable glass unit

The Korniche Flat Glass is designed for ease of installation so you can enjoy the benefit of your build project being watertight in minutes. The frame arrives fully assembled and is simply positioned, screwed down and sealed before internal and external fascias are clipped on, elegantly concealing joints and fastenings.

The unique design means that the glass unit in the Korniche Flat Glass can be replaced easily, quickly and affordably without disturbing any décor or the original sealing of the product to your roof. No cutting, no bonding, no expensive ceramic edged glass units - Just peace of mind.

▀ Laminated and Privacy glass options available.



more Korniche products

Specify with confidence, secure in the knowledge that the Korniche products you choose will be the perfect finish for your project.

For more information about the full multi-award-winning Korniche product range, and details of 'Where to Buy' please scan the QR Code below:

