







## BEAUTIFUL TIMBER WINDOWS & DOORS FOR PERIOD & MODERN HOMES

### THE COMPLETE RANGE

- Sash windows
- Casement windows
- Casement doors
- French doors
- Bifolding doors

### MADE TO MEASURE

- Bespoke sizes
- Shaped and curved windows
- Combination windows
- Architectural windows
- Elegant slim profiles and mouldings

### HIGH SPECIFICATION

- The finest stable, durable timbers
- Specialist glazing options including acoustic glass, laminated security glass & slim triple glazing
- High security hardware
- High performance microporous paint

### HIGH PERFORMANCE

- Optimum thermal efficiency - centre pane U value from 1.0 W/m<sup>2</sup>K (double glazed)
- Acoustic insulation - as high as 36 RwdB
- BS tested for air permeability, water tightness and wind resistance

### FULLY TESTED & CERTIFIED

- Compliant to Part L for thermal insulation
- Option for Part Q compliance for new build properties - tested to meet PAS24:2016
- UK based independent test laboratory

### FULL SERVICE & SUPPORT

- Survey and design - CAD drawings by our in-house design team
- Full range of installation options
- Aftercare support
- 10 year insurance backed warranty on installations





## BOX SASH WINDOWS

The Traditional Range box sash window is an elegant solution for period properties, new builds and extensions. Our sash windows are custom made from the finest materials, with slim section sizes, profiles and mouldings, and can be Part Q compliant for new build homes.

The Traditional Range features premium sustainable timber, a choice of specialist glazing and high security hardware as standard, to provide exceptional security, thermal and acoustic performance.

### Standard Specification

- Engineered & laminated Redwood, Hardwood or Larch
- 164mm frame, with weights & pulleys or spring balances
- 24mm Low E soft coat high performance glazing units
- Locking / non-locking hardware in choice of finishes
- Security sash stop locks as standard
- Long lasting 3 stage microporous paint system
- Full perimeter draught proofing with compression seals
- 1.2/1.3 W/m<sup>2</sup>K (Part L Compliant) / CE Marked
- BS tested for air permeability, water tightness & wind resistance

### Additional Options

- Slender glazing bars / astragals
- Laminated security glass for ground floor / accessible windows
- Patterned, privacy or acoustic glass, 28mm triple glazing
- Any RAL colour / colour match / dual colour
- Double / triple / quad box frames, splayed or square bays
- Cill extensions / head drips
- Groove for window board
- Trickle vents / vent locks







## SLIM BOX SASH WINDOWS

Our Traditional Range box sash windows are also available with a slim 150mm frame, making them ideal for replacement windows in period or conservation properties.

Featuring a thinner frame and thinner high performance double glazing, the Traditional Range slim box sash window is ideal for the authentic heritage look, without compromising on security, insulation or weather performance.

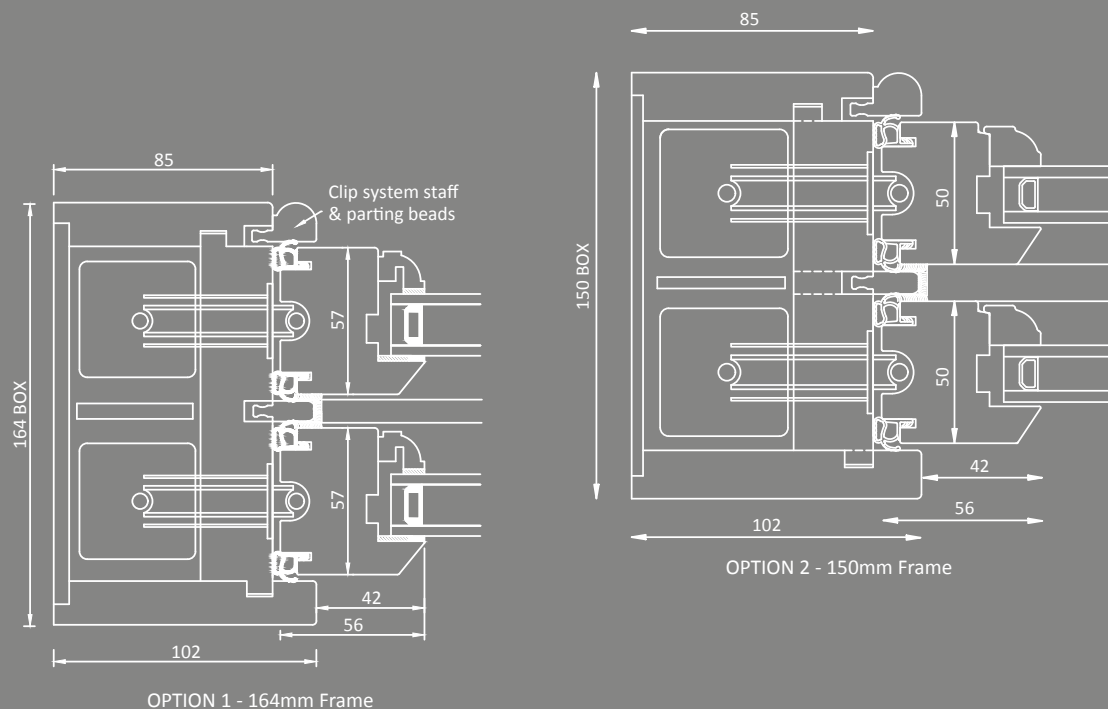
### Standard Specification

- Engineered & laminated Redwood, Hardwood or Larch
- 150mm frame, with weights & pulleys or spring balances
- 20mm Low E soft coat high performance glazing units
- Locking / non-locking hardware in choice of finishes
- Security sash stop locks as standard
- Long lasting 3 stage microporous paint system
- Full perimeter draught proofing with compression seals
- 1.4 W/m<sup>2</sup>K (Part L Compliant) / CE Marked
- BS tested for air permeability, water tightness & wind resistance

### Additional Options

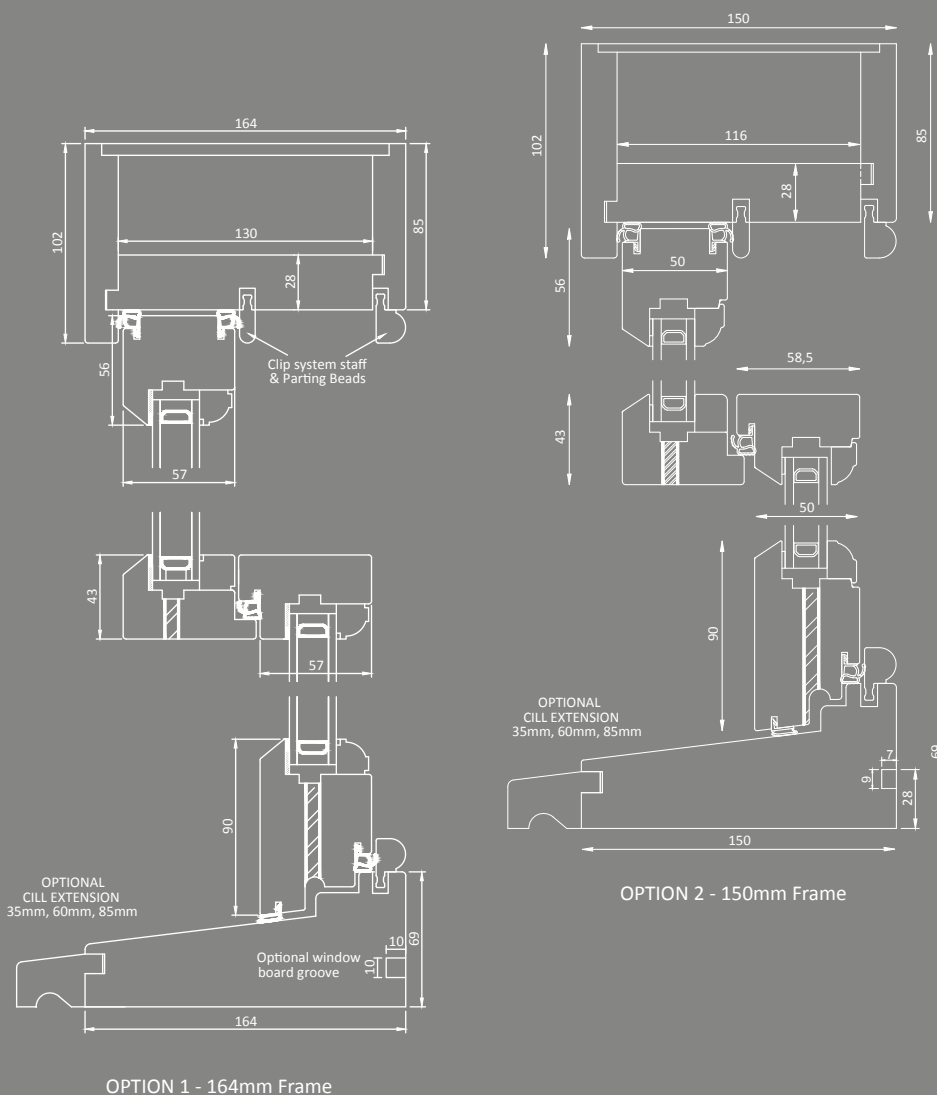
- Slender glazing bars / astragals
- Laminated security glass for ground floor / accessible windows
- Patterned, privacy or acoustic glass
- Any RAL colour / colour match / dual colour
- Double / triple / quad box frames, splayed or square bays
- Cill extensions / head drips
- Groove for window board
- Trickle vents / vent locks





## BOX SASH WINDOW PERFORMANCE

Cross section drawings show our standard box sash window (Option 1) and slim box sash window (Option 2).



Essential Characteristics	Performance	Harmonised Technical Specification
Watertightness	Class 8A 450pa	EN 14351-1:2006+A1:2010
Resistance to wind load	Class 5 2000pa	
Load-bearing capacity of safety devices	350 N	
Acoustic performance	36Rw(db) - Glass 4/14/6.8	
Thermal transmittance	1.2-1.4 U-value (W/m²K) calculation or better	
Radiation properties	npd	
Air permeability	Class 3 600pa	
Security performance	Option for PAS24:2016 (Part Q)	





## CASEMENT WINDOWS

Our Traditional Range timber casement windows combine robust security and insulation with the elegant period design Timbawood are known for. With a range of bespoke options, we offer the highest quality timber, hardware, paint and glazing, with each window custom made to last.

Featuring high performance low E glazing units and full perimeter draught proofing with compression seals, our casement windows provide optimum thermal efficiency and can be Part Q compliant for security.

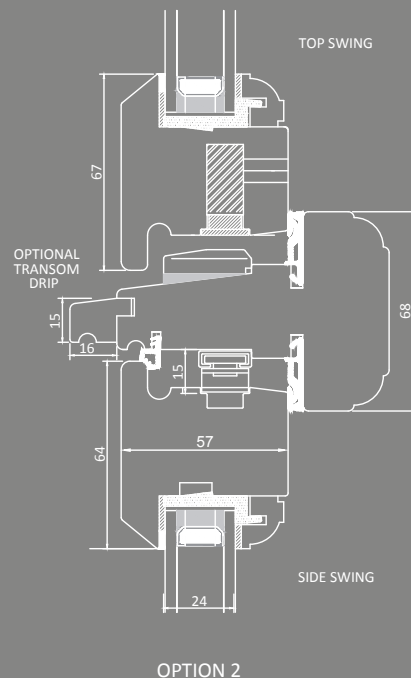
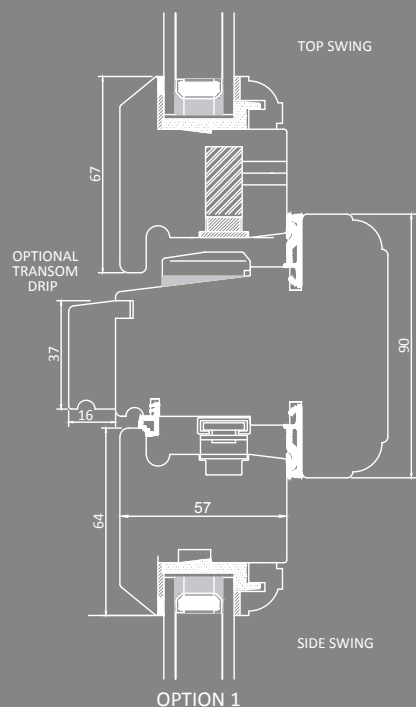
### Standard Specification

- Engineered & laminated Redwood, Hardwood or Larch
- 24mm Low E soft coat high performance glazing units
- Multipoint locking with locking handles in choice of finishes
- Friction hinges / easy clean egress hinges
- Long lasting 3 stage microporous paint system
- Full perimeter draught proofing with compression seals
- 1.4 W/m<sup>2</sup>K (Part L Compliant) / CE Marked
- BS tested for air permeability, water tightness & wind resistance

### Additional Options

- Glazing bars / astragals
- Laminated security glass for accessible windows
- Patterned, privacy or acoustic glass, 28mm triple glazing
- Any RAL colour / colour match / dual colour
- Transom drip / head drip
- Cill extensions / head drips
- Groove for window board
- Trickle vents

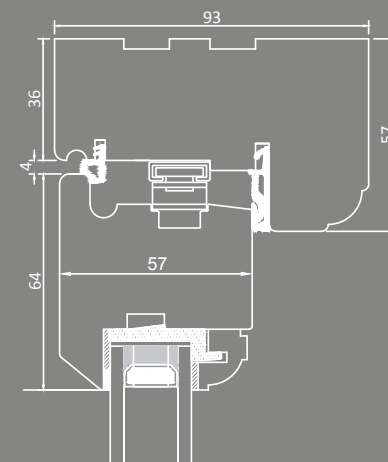




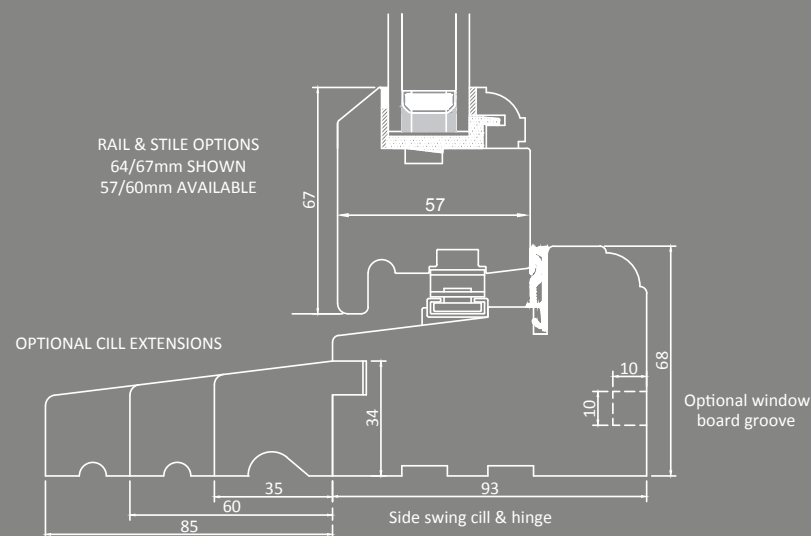
## CASEMENT WINDOW PERFORMANCE

All dimensions shown are as tested for Part Q compliance, with a maximum overall Sash leaf size 950mm wide x 1400mm high.

HEAD & JAMB OPTIONS  
57mm SHOWN  
68mm & 90mm  
AVAILABLE



RAIL & STILE OPTIONS  
64/67mm SHOWN  
57/60mm AVAILABLE



Essential Characteristics	Performance	Harmonised Technical Specification
Watertightness	Class 6A	EN 14351-1:2006+A1:2010
Resistance to wind load	Class 5 2000pa	
Load-bearing capacity of safety devices	350 N	
Acoustic performance	36Rw(db) - Glass 4/14/6.8	
Thermal transmittance	1.4 U-value (W/m²K) calculation or better	
Radiation properties	npd	
Air permeability	Class 4 600pa	
Security performance	Option for PAS24:2016 (Part Q)	





## FRENCH DOORS

Timbawood's range of single and double doors are ideal for period properties, new builds and extensions, and can include features such as side wings, side panels, top lights, panelling and glazing bars.

Each door is manufactured to the highest specification using durable, stable timber, with features including specialist glazing, multipoint locking and high security cylinders, to provide robust thermal and acoustic insulation as well as being able to meet Part Q regulations for security.

### Standard Specification

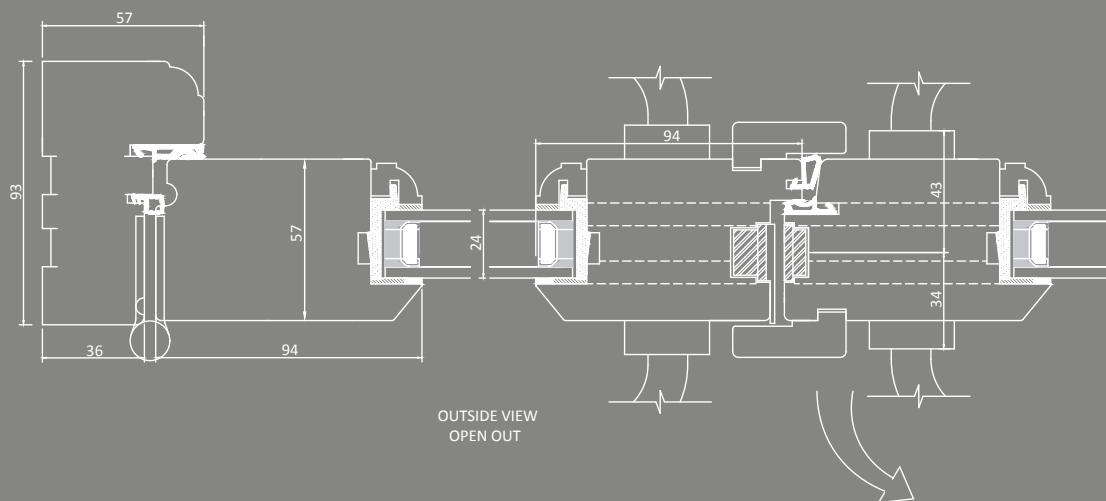
- Engineered & laminated Redwood, Hardwood or Larch
- 93mm frame depth with 57mm thick door section
- 24mm Low E soft coat high performance glazing units
- High security multipoint locking system in choice of finishes
- Long lasting 3 stage microporous paint system
- Full perimeter draught proofing with compression seals
- 1.4 W/m<sup>2</sup>K (Part L Compliant) / CE Marked
- BS tested for air permeability, water tightness & wind resistance

### Additional Options

- Slender glazing bars / astragals
- Laminated security glass for accessible doors
- Patterned, solar control or acoustic glass, 28mm triple glazing
- Anti bump / anti drill / high security cylinders (Part Q)
- Flat or raised and fielded panelling
- Any RAL colour / colour match / dual colour
- Cill extensions / head drips
- Trickle vents
- Keyed alike handles



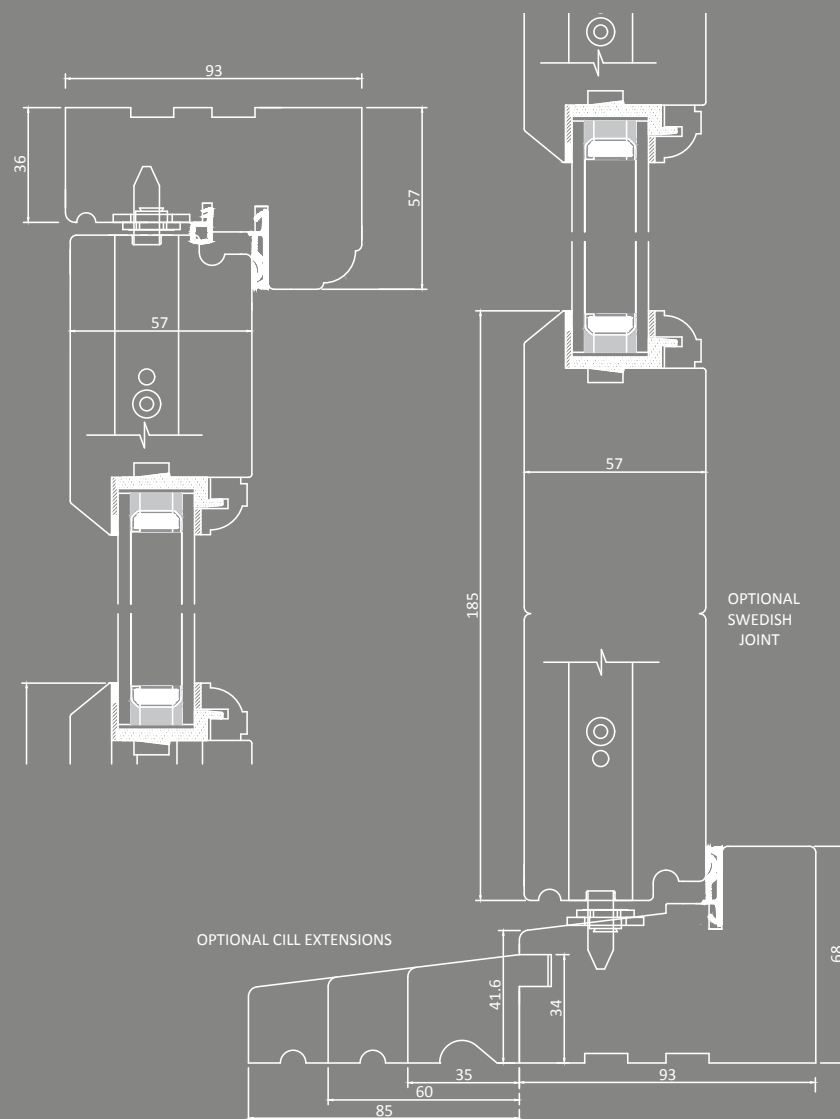




## FRENCH DOOR PERFORMANCE

All dimensions shown are as tested for Part Q compliance, with a maximum overall double door frame size of 2200mm wide x 2360mm high.

Essential Characteristics	Performance - Double Doors	Performance - Single Doors	Harmonised Technical Specification
Watertightness	Class 3A	9A 600pa	EN 14351-1:2006+A1:2010
Resistance to wind load	800pa A2	2000pa C5	
Load-bearing capacity of safety devices	npd	npd	
Acoustic performance	36Rw(db) - Glass 4/14/6.8	36Rw(db) - Glass 4/14/6.8	
Thermal transmittance	1.4 U-value (W/m²K) calculation or better	1.4 U-value (W/m²K) calculation or better	
Radiation properties	npd	npd	
Air permeability	300pa C2	600pa C4	
Security performance	Option for PAS24:2016 (Part Q)	Option for PAS24:2016 (Part Q)	





## SLIDING & FOLDING DOORS

All of our Traditional Range sliding doors are manufactured using the highest specification materials and running systems available.

Tailored designs can fit irregular spaces or large scale formats, up to 16 metres wide and 3 metres high. Features include 5 point multipoint locking, stainless steel easy slide tracking with fingertip control, and specialist glazing to meet all security and insulation requirements.

### Standard Specification

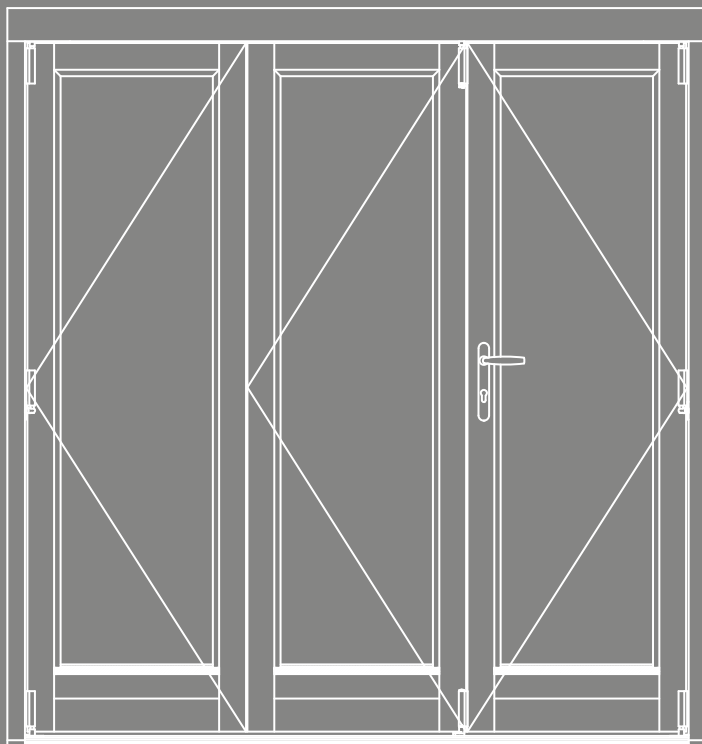
- Engineered & laminated Redwood, Hardwood or Larch
- Up to 16 metres wide and 3 metres high
- 105 - 150mm frame depth with 55mm thick door section
- 24mm Low E soft coat high performance glazing units
- 5 point high security multipoint locking system
- Long lasting 3 stage microporous paint system
- Full perimeter draught proofing with compression seals
- 1.4 W/m<sup>2</sup>K (Part L Compliant) / CE Marked

### Additional Options

- Slender glazing bars / astragals
- Laminated security glass for accessible doors
- Patterned, solar control or acoustic glass, 28mm triple glazing
- Anti bump / anti drill / high security cylinders (Part Q)
- Flat or raised and fielded panelling
- Any RAL colour / colour match
- Top lights
- Cill extensions / head drips
- Trickle vents
- Keyed alike handles

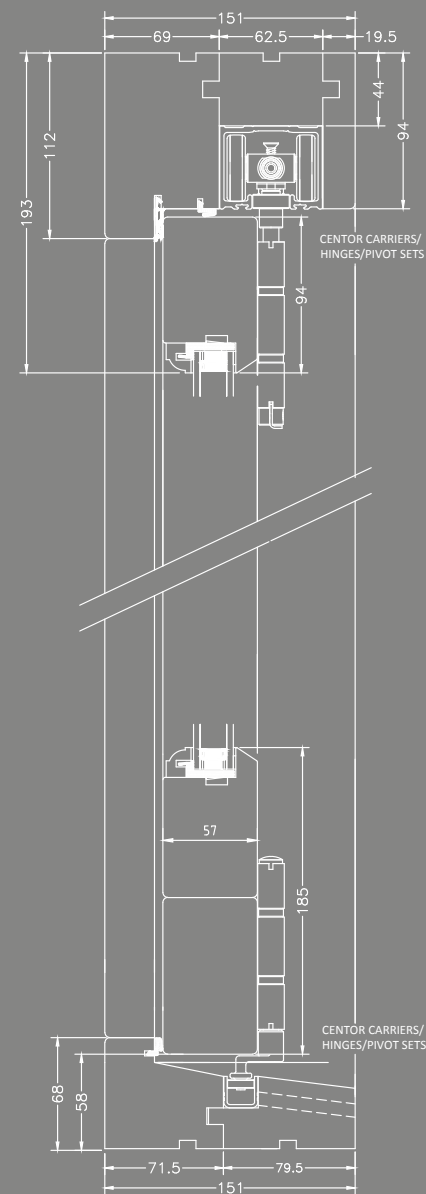






## SLIDING DOOR PERFORMANCE

All dimensions shown are as tested for Part Q compliance.



Essential Characteristics	Performance	Harmonised Technical Specification
Watertightness	N/A	EN 14351-1:2006+A1:2010
Resistance to wind load	N/A	
Load-bearing capacity of safety devices	350 N	
Acoustic performance	36Rw(db) - Glass 4/14/6.8	
Thermal transmittance	1.4 U-value (W/m²K) calculation or better	
Radiation properties	npd	
Air permeability	N/A	
Security performance	Option for PAS24:2016 (Part Q)	

## THE TIMBAWOOD GUARANTEE

Our technical support team ensure your project runs smoothly, from concept, design, production and delivery right through to installation and maintenance. We offer a full CAD design service for all projects and have robust health and safety, environmental policies and accreditations in place, including:

- FENSA and TrustMark registered manufacturer
- CHAS and SMAS accredited
- All our timber meets EU TR criteria
- All our glass and glazing are manufactured to BS EN 1279
- All paint and stains are finished in accordance with BS EN 927/6 and BS EN 927/3

## WARRANTIES

At Timbawood we work with the highest quality materials and suppliers to ensure our products stand the test of time. All installations are provided with a 10 year insurance backed warranty by Installsure, with the following additional warranties:

- **Materials and construction**

10 year warranty against distortion, decay or malfunction of all timber windows and doors

- **Glass and glazing**

10 year warranty against premature unit failure

- **Paint finish**

10 year warranty is provided on all windows and doors completed with a full spray paint finish, depending on location





## DOUBLE & TRIPLE GLAZING

Our Traditional Range timber windows and doors are available with 24mm double glazed units, with the option for laminated security glass on accessible windows.



### Standard Specification

- 24mm Low E soft coat high performance glazing units
- Internally glazed for additional security
- U values as efficient as 1.0 W/m<sup>2</sup>K
- Warm edge spacer bars in choice of colours for optimum thermal and acoustic performance
- All manufactured to BS EN 1279
- 10 year warranty against discoloration or unit failure

### Additional Options

- Laminated, solar control or acoustic (sound control) glass
- Wide range of patterned and opaque glass types
- Slender glazing bars / astragals
- Triple glazing - 24mm Low E Argon filled triple glazed units with U values from 0.6 W/m<sup>2</sup>K, option for laminated security glass on accessible windows.

## INSULATION PERFORMANCE

	Standard Double glazing 4-16-4mm	Double glazing with laminated security glass 4-14-6.8mm	Double glazing with acoustic glass 4-14-6.8mm	Triple glazing 4-8-8-4mm	Triple glazing with laminated security glass 4-8-6-6.8mm
Thermal Insulation (Centre pane U-value)	1.0	1.1	1.1	0.6	0.7
Acoustic Insulation (RwdB)	30	36	38	35	39

## CASEMENT WINDOW HARDWARE

### Bulb End Fastener



- Bulb End fastener in choice of finishes: Polished Brass, Polished Chrome, Satin Chrome, Oil Rubbed Bronze, Antique Brass, Antique Pewter
- Multipoint espaglonette locking by Kenrick
- Friction hinges / easy clean egress hinges



### Spoon End Fastener



- Spoon End fastener in choice of finishes: Polished Brass, Polished Chrome, Satin Chrome, Oil Rubbed Bronze, Antique Brass, Antique Pewter
- Multipoint espaglonette locking by Kenrick
- Friction hinges / easy clean egress hinges



### Mila ProLinea Handle



- Mila ProLinea handle in choice of finishes: Polished Brass, Polished Chrome, Satin Chrome and Black
- Multipoint espaglonette locking by Kenrick
- Friction hinges / easy clean egress hinges



Restricted friction hinges - with child resistant button release to restrict window opening to maximum of 100mm.



## SASH WINDOW HARDWARE



### Forged Hook Fastener

- High security lockable hardware
- Forged hook fasteners in choice of finishes: Polished Brass, Polished Chrome, Satin Chrome, Oil Rubbed Bronze, Antique Brass
- Security sash stop locks as standard



- Curved sash lifts in choice of finishes: Polished Brass, Polished Chrome, Satin Chrome, Oil Rubbed Bronze, Antique Brass



Security sash stop locks as standard, in choice of finishes, with option to upgrade to self locking Angel Ventlocks

## DOOR HARDWARE



### Mila ProLinea Handle

- Mila ProLinea lockable lever handle in choice of finishes: Polished Brass, Polished Chrome, Satin Chrome and Black
- Multipoint espaglonette locking by Winkhaus



### Windsor Handle

- Windsor lockable lever handle in choice of finishes: Polished Brass, Polished Chrome, Satin Chrome and Black
- Multipoint espaglonette locking by Winkhaus



The Timbawood range includes:

### HERITAGE RANGE

Bespoke replica windows and doors, ideal for listed buildings and conservation areas

### CONSERVATION RANGE

Suitable for conservation areas and homes of distinction

### TRADITIONAL RANGE

Suitable for all period and modern properties



Timbawood Ltd  
Unit 8-9 Mount Road Ind Estate, Mount Road, London, TW13 6AR  
Tel: 0208 893 4889 Email: [sales@timbawood.co.uk](mailto:sales@timbawood.co.uk) Web: [www.timbawood.co.uk](http://www.timbawood.co.uk)