



everflow[®] 

A guide to waste management

An introduction to effective waste management for your business

everflow[®]

A guide to waste management

An introduction to effective waste management for your business.

Waste management isn't just a rubbish job. In fact, it's becoming a key consideration for organisations looking to manage overheads, meet compliance requirements and do their bit for the planet. Here's a helpful guide to help you understand what effective waste management looks like and how to implement it into your business.



Organisations of all sizes and sectors have a duty of care when it comes to dealing with waste. It's essential to make sure that commercial waste is handled appropriately, separated out where necessary and not simply sent to landfill. In recent years, there has been much greater focus on the long-term damage to the environment that can be caused by poor handling of waste. So, this guide is here to help your business ensure it is doing everything possible to handle waste safely, responsibly and cost effectively.

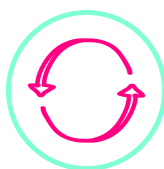
What is waste management?

Commercial waste management involves taking control of the entire waste process – from production to handling to collection and disposal. Effective management comes in many different forms and can be achieved by not only reducing the amount of waste produced but also ensuring that processes and procedures are put in place to handle waste safely and conscientiously.



General waste

Everyday rubbish that can't be recycled, such as non-recyclable plastic containers and non-hazardous cleaning products such as wipes, sponges, and cloths.



Recycling

Everyday rubbish that can be recycled, such as cardboard, paper and certain plastics. Where possible, businesses should use recyclables over general waste materials. Organisations should also reuse products and materials as much as possible to reduce waste.



Glass

Glass waste, such as empty bottles and jars, as well as broken glass. Usually recycled separately.



Food waste

Food waste and kitchen scraps, such as scrapings, leftovers, and expired foods.



Clinical waste

Medical swabs, bandages, and sharps waste like needles. These aren't specific to hospitals; needles can be found in other establishments like tattoo parlours and in toilets accommodating diabetics.

Waste management: who needs it?

Every business creates waste in one form or another. And every business has an obligation to manage that waste responsibly. Whether your organisation is office-based and runs paperless or is factory-based and handles large quantities of raw materials on a daily basis, every company has a role to play.

For many organisations effective waste management is important for compliance with relevant legislation. This can vary depending on your business type, the kinds of waste produced and the region of the UK in which you are based. Working with an experienced waste management provider will make it much easier to achieve compliance and help to embed the necessary processes within your organisation with minimal disruption or hassle.

Why is waste management important?

At the most basic level, the efficient management and disposal of waste helps to prevent rubbish for building up in and around your commercial premises. But there is certainly more to it than that – whether your organisation has compliance obligations or not. Here are some of the key benefits of waste management:

✓ Cost Savings

Using fewer resources can save you significant operational costs in the form of disposal charges and landfill taxes, while reusing materials means less money spent on raw materials.

✓ Environmental Health

There is no getting around the fact that landfill sites are bad for the local environment. Reducing pollution should be a core goal of any responsible organisation and so reducing waste can help to mitigate issues such as water pollution and methane emissions.

✓ Economic Gains

Waste management opportunities can support local businesses, increase tax revenue for local governments, and create more jobs in the community.

✓ Community Engagement

Many waste management initiatives encourage communities to get involved, providing better access and knowledge for recycling, composting and more.

✓ Resource Efficiency

Repurposing and reusing materials is a sustainable practice that can reduce the need to invest in new resources.

✓ Health and Safety

From potentially toxic substances to pests and disease-carrying organisms, responsible waste management can reduce the likelihood of numerous key health risks.

✓ Social Impact

Civic pride, improved quality of life, and a more equal distribution of resources are just some of the positive social impacts that can come about through effective waste management.

✓ Incentives

As sustainability is such a key factor for modern businesses, putting green methods into practice – including waste management – could grant your business access to key incentives and premiums.

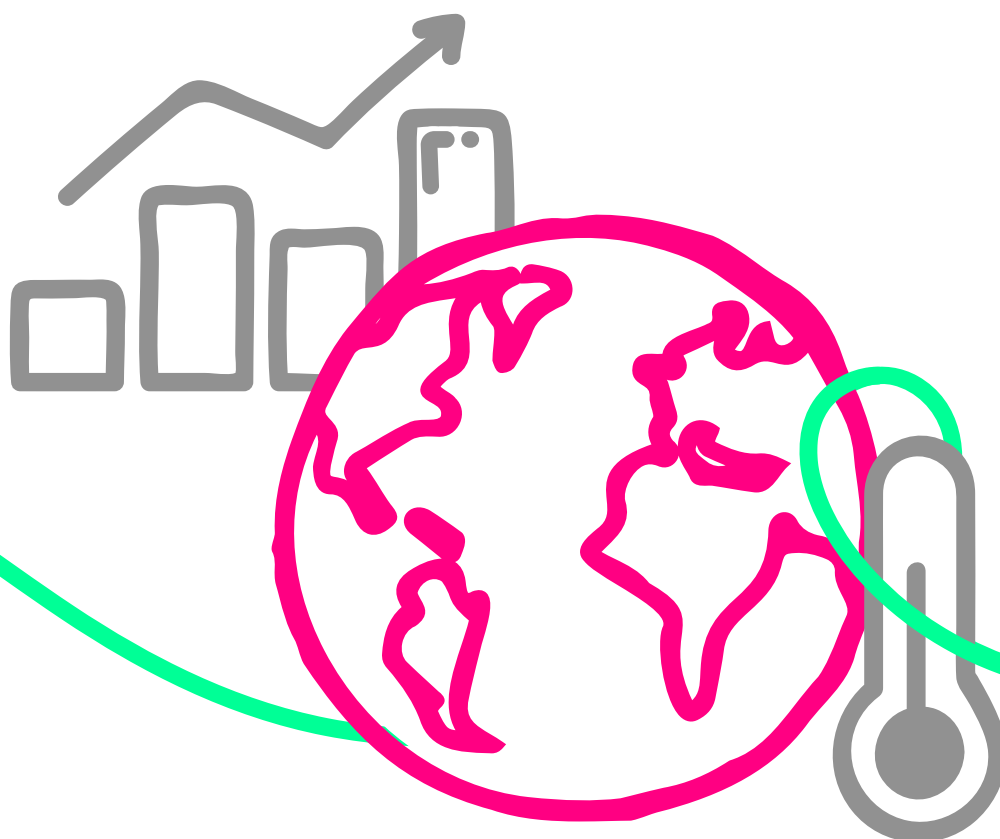
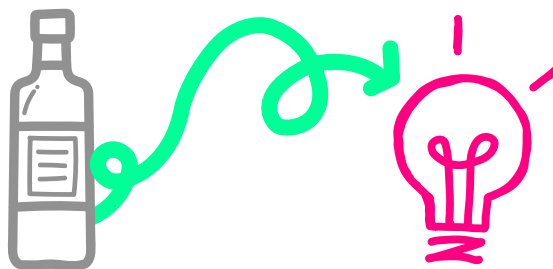
Environmental responsibility: a priority for us all

The current global temperature is 1.1 °C higher than pre-industrial levels. The dangers associated with this rise in temperatures is well documented and the impact of global warming are expected to affect us all – both in the business world and our private lives.

As the UK sets a course for Net Zero by 2050, all organisations can help to contribute to the lowering of emissions by minimising both the consumption of materials and contributions to landfill. Recycling, reusing, and reducing the amount of waste your business creates can reduce your commercial carbon footprint.

Even small changes to daily operations can make a big difference.

According to a study by the San Diego County Office of Education, recycling one glass bottle saves enough energy to light a 100-watt light bulb for four hours.



What to look for in a waste management partner

Choosing a waste management provider isn't always easy. What should you look for in a partner? What questions should you ask? And how should you judge their effectiveness? Here's some food for thought.

✓ Experience and Reputation

Take the time to look into a potential provider's reputation and track record for delivering an exceptional service. This can be done by checking out reviews and testimonials.

✓ Transparency

One of the most important things to look for in a partner is transparency. A responsible waste management business will be clear about where your waste goes, how much is recycled and what the environmental impact of waste disposal is.

✓ Affordability

At a time when all organisations are paying close attention to their business overheads, choosing a cost-effective and competitive partner is essential. Unlike many providers, Everflow commits to ensuring that our fees contain no hidden costs.

✓ Sustainability

If you are dedicated to protecting the environment, you want your waste management provider to do the same. Ask about a provider's credentials and ensure that they follow all of their responsibilities in relation to Waste Transfer Notes. At Everflow we are also committed to 100% offsetting of the carbon produced through the collection and disposal of your waste.

✓ Customer service

Working with a partner that is dedicated to making your waste management smooth and seamless is critical. At Everflow our 5* service is shaped around your needs to give you the freedom to get on with your day job.

What does a waste audit involve?

An audit is the first step to effective waste management, identifying potential weak spots to reduce your carbon footprint and your costs.

Efficiency

On-site labour and the movement of waste.

Scale

Size of site, workforce, resources, and structure.

Data

Types, volumes, and frequency of waste

Workflow

Opportunities for rebate.

Capacity

Opportunities for on-site processing.

Value

Ideal waste technology and supply chain.

Quality

Value of waste outputs

Simple ways to reduce your business waste

Comprehensive waste management should involve looking at every aspect of your business in order to reduce your output and improve your disposal methods. But even small steps can make a big difference, so here are some simple ways you can start reducing your business waste today.

✓ Reduce packaging waste

Introduce simple ways to reduce your packaging waste, like bulk buying. Not only does this lower the amount of packaging, but it also cuts down the energy and transport costs needed for delivery.

✓ Compost food waste

The majority of organic waste is compostable, meaning it breaks down naturally. By introducing compost bins for food scraps, you can put a sizeable chunk of your waste to better use.

✓ Buy what you need

Reduce the amount of waste you create by buying less in the first place. Regular stock inventories can keep you in the know about what you need and what you don't.

✓ Use refillable items

Many common workplace items, like washing up liquid, hand soap, and sanitizers, have refillable packaging options. This can greatly reduce the number of empty containers you throw away.

✓ Buy second-hand

When you do need to buy something, make second-hand your first choice. From electronics to furniture, second-hand items are cheaper and help the planet. Similarly, any items you don't need anymore should be donated rather than thrown away.

✓ Repair and reuse

See whether broken items can be repaired before abandoning them. Many common items can be repurposed, which saves you having to buy a replacement.

✓ Opt out

Junk mail piles up, so put some time aside to opt out of mailing lists and subscriptions you don't use.

✓ Create a recycling scheme

Recycling greatly reduces the amount of general waste your business produces, and introducing a recycling scheme helps to make it an intrinsic part of your business' daily operations.



Ready to take control of your business waste?

Everflow is on a mission to make utilities simple, so our business waste management services is built to save you time and money with a 5-star service and no hidden costs. Whether you have multiple sites or just one, we have a tailored solution for you.

www.everflowutilities.com

waste.customerservices@everflowutilities.com

0330 165 9890