



your one stop partner

Our Services

- Commercial Kitchen Design & Fit Outs
- Restaurants, Café & Shop Fit-Outs
- Project Management

Our Products

- Commercial Kitchen Equipment
- Custom Fabrications
- Kitchen Ventilation Systems
- Hygienic Wall Cladding
- Stainless Steel Wall Cladding
- Anti-Slip Flooring
- Commercial Electrical Engineers
- Commercial Gas Engineers
- Heating & Plumbing Engineers

Kachori

Indian Restaurant – Elephant & Castle
Commercial Kitchen & Restaurant Fit Out.



KACHORI



KACHORI

KACHORI













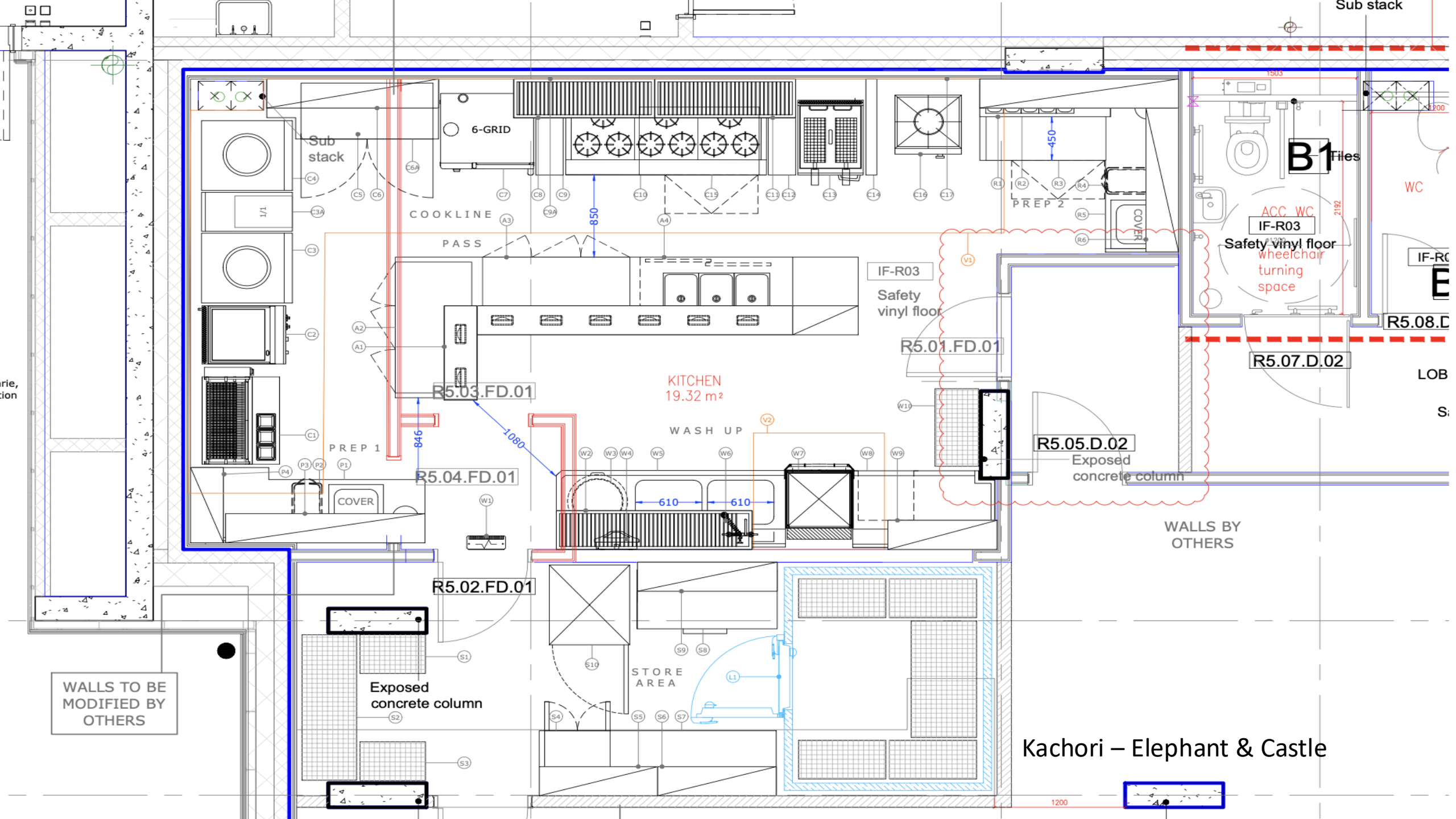






K





WALLS TO BE MODIFIED BY OTHERS

Exposed concrete column

Kachori – Elephant & Castle

1200

Storyline

Modern Café/Restaurant – Duke Street London
Commercial Kitchen & Restaurant Fit Out.

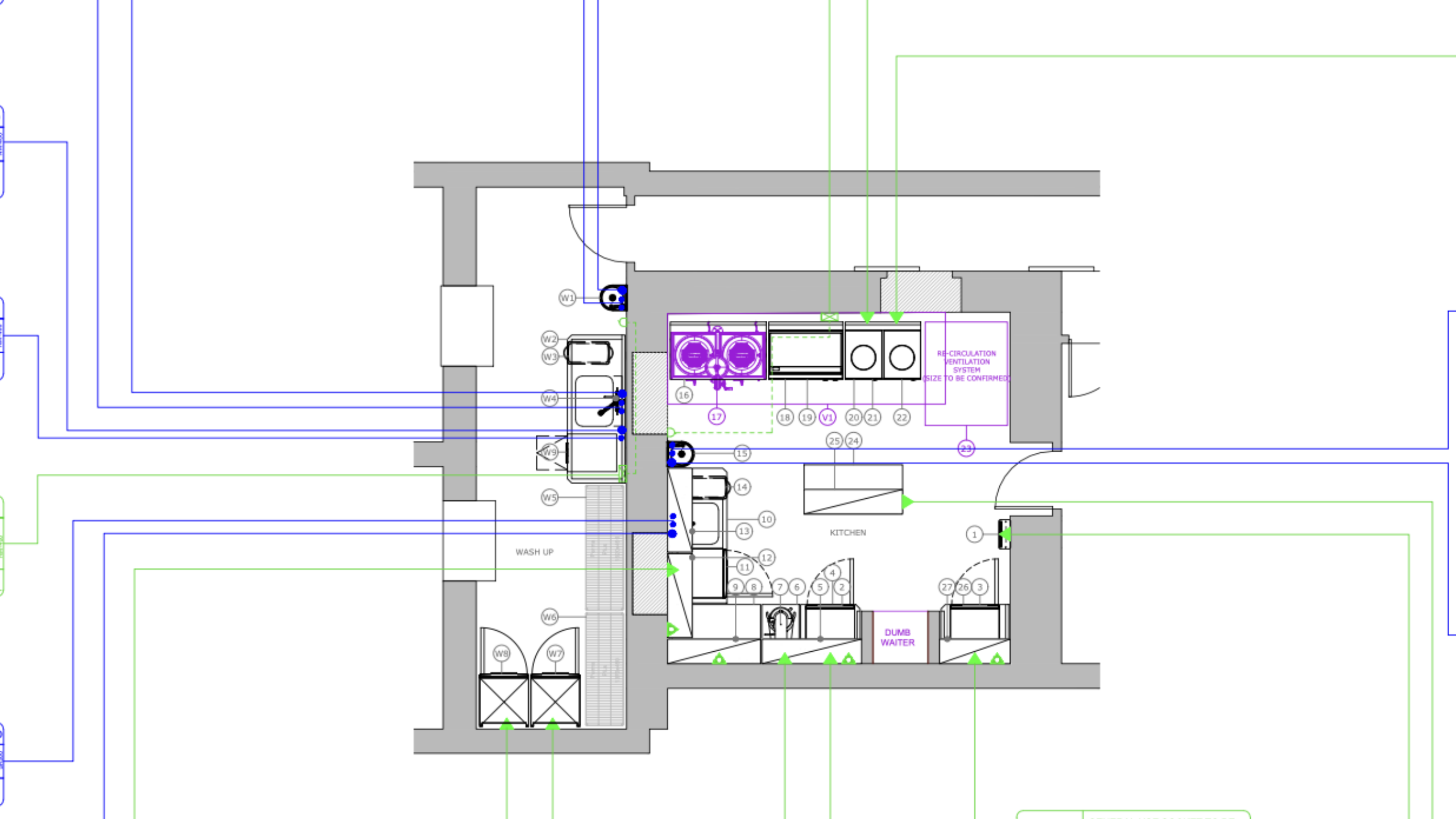
STORYLINE





STORYLINE





Ursuline High School

School – Wimbledon

Commercial Kitchen & Dinning Area.













Two stacked stainless steel Rational steam ovens. The top oven has a digital display and a control knob. The bottom oven also has a digital display and a control knob. Both ovens feature a yellow warning triangle symbol on their front panels. The brand name "RATIONAL" is visible on the top right of each oven's control panel.

A yellow electrical control box with a red emergency stop button. The text "Rat fona T 10" is printed on the box. It is mounted on a light blue wall panel.

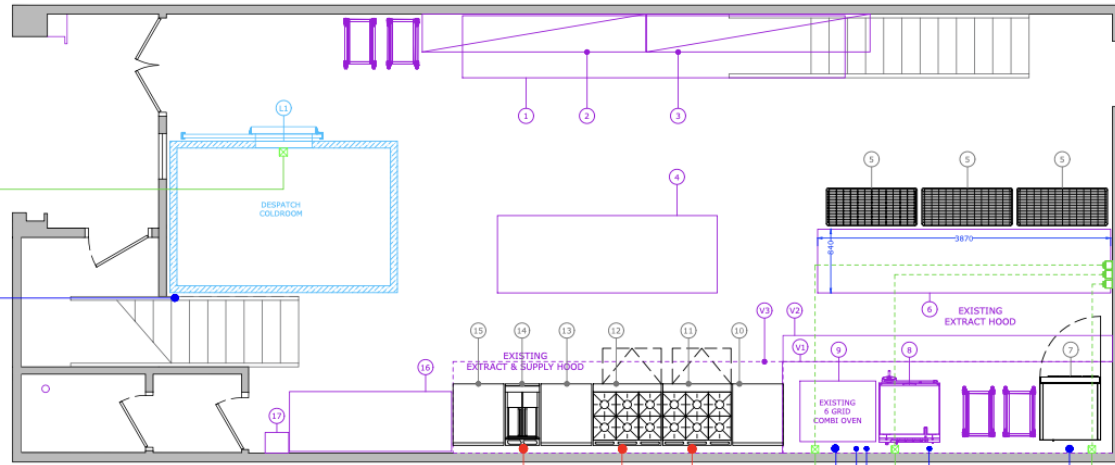
A smaller yellow electrical control box, similar to the one above, also with a red emergency stop button and the text "Rat fona T 10".

A metal shelving unit with a wire mesh structure. It has several shelves and is positioned on the right side of the kitchen. A white box is visible on one of the lower shelves.

Social Pantry

Contract Caterer – Batterssea
Commercial Kitchen & Board Room Fit-Out.

UNIT 3 -
GROUND FLOOR



ITEMS: L1 ELECTRICAL SUPPLY REQUIRED

SUPPLY 1 TOTAL LOADING: 20 AMP PHASES: 1
SITE ELECTRICAL CONTRACTOR TO LEAVE 300mm TAILS WITH ISOLATOR AT HIGH LEVEL (LOCATION TBC)

ITEMS: L1 WASTE CONNECTION REQUIRED

PLASTIC WASTE CONNECTION (TRAPPED)
SIZE OF CONNECTION: 1.5" (PLASTIC)
CONNECTION (●) POINTING UPWARDS TERMINATED WITH 200mm PIPE (WITH TRAP) AT: 400mm AFFL

ITEMS: 14 NAT. GAS SUPPLY REQUIRED

TOTAL BTU PHR REQUIRED: 86,000 BTU phr
SIZE OF CONNECTION: 3/4" BSP
CONNECTION (●) POINTING DOWNWARDS TERMINATED WITH LEVER-TYPE ISOLATOR AT HEIGHT 500mm A.F.F.L. (REFER TO DIAGRAM 3)

ITEMS: 12 NAT. GAS SUPPLY REQUIRED

TOTAL BTU PHR REQUIRED: 175,000 BTU phr
SIZE OF CONNECTION: 3/4" BSP
CONNECTION (●) POINTING DOWNWARDS TERMINATED WITH LEVER-TYPE ISOLATOR AT HEIGHT 500mm A.F.F.L. (REFER TO DIAGRAM 3)

ITEMS: 11 NAT. GAS SUPPLY REQUIRED

TOTAL BTU PHR REQUIRED: 175,000 BTU phr
SIZE OF CONNECTION: 3/4" BSP
CONNECTION (●) POINTING DOWNWARDS TERMINATED WITH LEVER-TYPE ISOLATOR AT HEIGHT 500mm A.F.F.L. (REFER TO DIAGRAM 3)

PLEASE NOTE:
EXISTING SINK UNIT (ITEM 16) AND
EXISTING HAND WASH BASIN (ITEM 17)
TO REMAIN IN CURRENT POSITION.
EXISTING SERVICES TO BE RETAINED.

ITEMS: 7 ELECTRICAL SUPPLY REQUIRED

TOTAL LOADING: 4KW PHASES: 1
PHASE 1 LOADING: 20 AMPS
PHASE 2 LOADING: N/A
PHASE 3 LOADING: N/A
OUTLET BOX (□) AT HEIGHT: 500mm AFFL WITH WATERPROOF ROTARY SWITCHED ISOLATOR (●) AT HEIGHT: 1500mm AFFL

PLEASE NOTE:
Blast chiller (item 7) has a
low level evaporator trays
which must be monitored
and emptied manually.

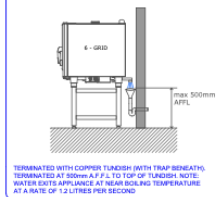
SERVICES FOR EXISTING UNIT TO BE CHECKED ON SITE

ITEMS: 9 ELECTRICAL SUPPLY REQUIRED

TOTAL LOADING: 12kW PHASES: 3
PHASE 1 LOADING: 16 AMPS
PHASE 2 LOADING: 16 AMPS
PHASE 3 LOADING: 16 AMPS
OUTLET BOX (□) AT HEIGHT: 400mm AFFL WITH WATERPROOF ROTARY SWITCHED ISOLATOR (●) AT HEIGHT: 1500mm AFFL

ITEMS: 9 WASTE CONNECTION REQUIRED

PIPE SIZE: 2" COPPER (WITH TUNDRIS)
NOTE: FIRST 2000mm OF PIPING MUST BE RUN IN 2" COPPER PIPE TO COMPLY WITH MANUFACTURERS WARRANTY TERMS



ITEMS: 9 COLD WATER REQUIRED

MAINS COLD WATER (MIN PRESSURE: 1.5 BAR)
SIZE OF CONNECTION: 15mm (COPPER)
CONNECTION (●) POINTING UPWARDS TERMINATED WITH BALLCOX VALVE AT HEIGHT: 400MM AFFL

ITEMS: 9 COLD WATER REQUIRED

MAINS COLD WATER (MIN PRESSURE: 1.5 BAR)
SIZE OF CONNECTION: 15mm (COPPER)
CONNECTION (●) POINTING UPWARDS TERMINATED WITH BALLCOX VALVE AT HEIGHT: 400MM AFFL

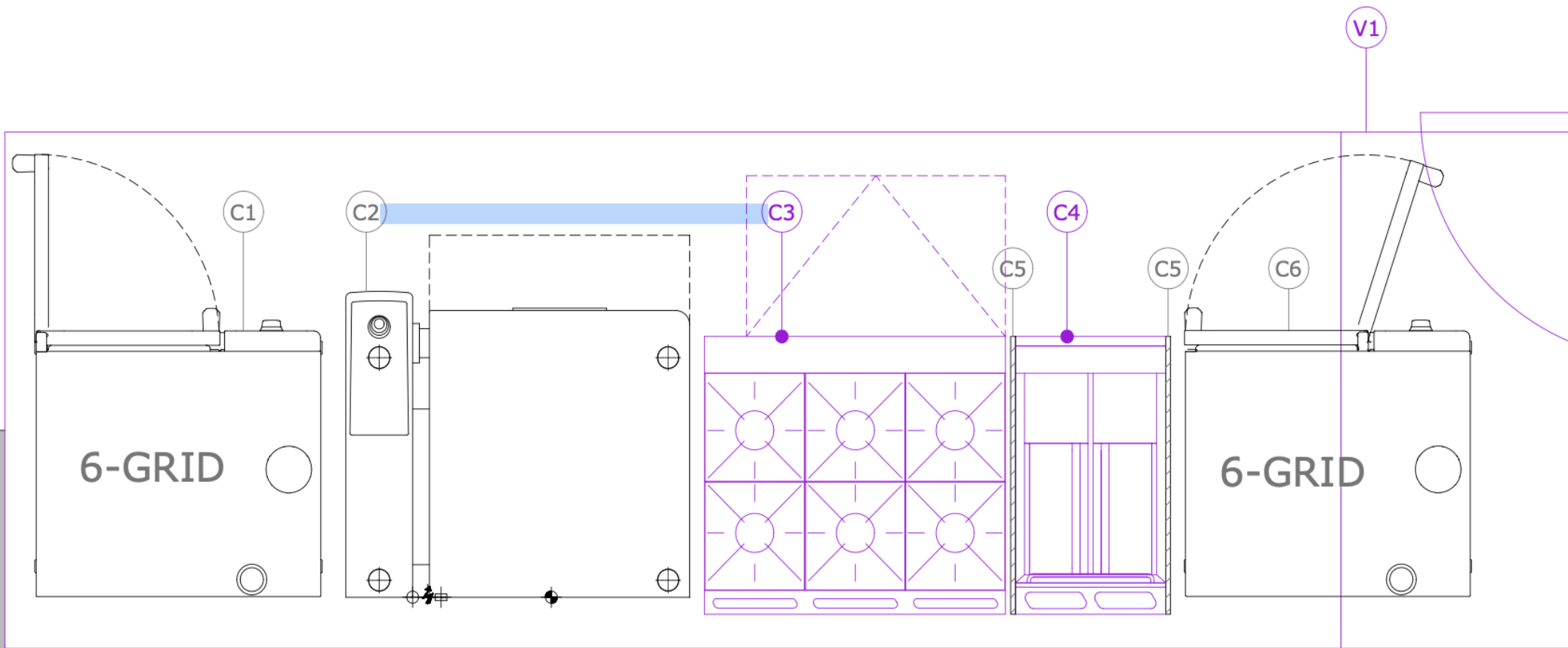
SERVICES FOR EXISTING UNIT TO BE CHECKED ON SITE

ITEMS: 8 ELECTRICAL SUPPLY REQUIRED

TOTAL LOADING: 9 kW PHASES: 3
PHASE 1 LOADING: 3 kW
PHASE 2 LOADING: 3 kW
PHASE 3 LOADING: 3 kW
OUTLET BOX (□) AT HEIGHT: 400mm AFFL WITH WATERPROOF ROTARY SWITCHED ISOLATOR (●) AT HEIGHT: 1500mm AFFL

ITEMS: 8 COLD WATER REQUIRED

MAINS COLD WATER ONLY (PRESSURE: 1.5 Bar)
SIZE OF CONNECTION: 15mm (COPPER)
CONNECTION (●) POINTING UPWARDS TERMINATED WITH BALLCOX VALVE AT HEIGHT: 400MM AFFL



EXI
COL

Cookline