



# Product Guide

Monitor energy, temperature, legionella,  
environment and more with Invisible Systems.





# Contents

<b><u>Live by Invisible Systems</u></b> _____	3
<b><u>T-Series</u></b> _____	4
<b><u>ENV-Series</u></b> _____	5
<b><u>U-Series</u></b> _____	6
<b><u>Eco Lync</u></b> _____	7
<b><u>M-HAS</u></b> _____	8
<b>Case Study</b> _____	9
<b><u>Contact Us</u></b> _____	10



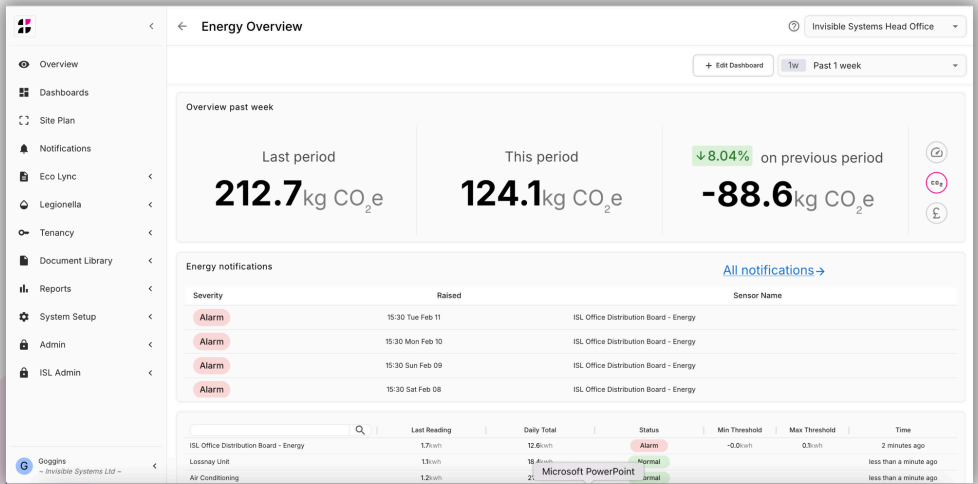


# Live by Invisible Systems

## Live by Invisible Systems

Live by Invisible Systems is designed to provide businesses with a seamless and intuitive monitoring experience, ensuring operational efficiency and compliance across multiple industries. With its user-friendly interface and powerful analytics, businesses can gain valuable insights into energy usage, environmental conditions, and compliance data at a glance.

Whether you need to track temperature for food storage, monitor water safety for legionella compliance, or optimise energy consumption in manufacturing, Live delivers real-time, actionable data that supports informed decision-making. Its scalable and flexible design makes it the perfect solution for organisations looking to enhance sustainability, reduce costs, and streamline compliance processes.





# T-Series

**Invisible Systems' Smart Temperature Sensors offer precise and accurate temperature monitoring to enable informed decision making, compliance and cost reduction.**

## Legionella Monitor

The T-Series Legionella Monitor measures water pipe temperatures to detect fluctuations, indicating legionella bacteria presence in stagnant water.

It alerts users to temperature changes and comes in single, dual and triple probe options for different uses.

## Legionella - Submersible Probe

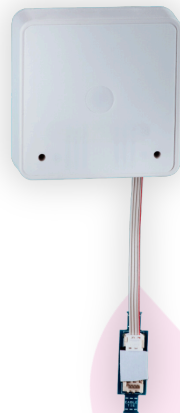
The T-Series Legionella Submersible Probe offers live monitoring of water temperature and legionella levels in water systems.

It is waterproof and provides accurate measurements without needing battery replacement or calibration.

## Precision Temperature Sensors

The T-Series Precision Temperature Sensors by Invisible Systems offer live, accurate temperature readings down to 0.3 degrees.

They help to detect fluctuations, provide alerts and gather data for proactive issue detection and regulatory compliance, ultimately helping businesses to reduce costs.





# ENV-Series

**Invisible Systems' Smart Environmental Sensors help businesses comply with environmental health and safety standards by monitoring indoor air quality.**

## Environmental Sensor

The ENV-Series Environmental Sensor measures ambient temperature, relative humidity and CO2 concentration, allowing users to stay ahead of potential air quality issues and meet regulatory requirements.

With real-time alerts and data captured every 7.5 minutes, these battery-powered sensors provide timely and precise environmental monitoring to ensure safety and compliance.





# U-Series

**Invisible Systems' utility solutions measure energy usage and efficiency, allowing you to identify areas of opportunity to reduce waste, save money and reach environmental goals.**

## Three Channel Electricity Meter

The Three Channel Electricity Meter measures demand, consumption and peak demand to provide a comprehensive understanding of energy usage.

This empowers businesses to optimise their energy management and make proactive changes in areas of inefficiency, leading to a smaller carbon footprint, reduced costs and consistent compliance with regulations.



## Pulse Counter and Digital Status Sensor

The U-Series Pulse Counter and Digital Status Sensor helps to detect wasted energy, which may be a result of underlying damage within a piece of electrical equipment. This can go unnoticed for months, leading to great inefficiencies in energy usage as the machinery tries to overcompensate.

With a 7-year service life, these battery-powered sensors immediately detect an increase in energy consumption and alert users, preventing additional expenses from equipment repairs or replacement and avoiding energy waste.



# Eco Lync

**Eco Lync monitors and controls power usage on construction sites, helping companies to reduce energy consumption and drive down unnecessary costs.**

## Energy Consumption Monitoring System

Eco Lync is an energy management system built to monitor and control power usage, primarily on construction sites.

Once installed, Eco Lync uses sensors to track fuel consumption in real-time, letting users proactively minimise their energy waste. The system also automatically switches off non-essential appliances and equipment when not in use or when energy demand increases. This helps companies to significantly reduce their carbon emissions and save on costs.





# M-HAS

**Invisible Systems' M-HAS solution comprises cutting-edge hardware, sensing equipment and data analytics to optimise renewable asset performance.**

## **Wind Turbine & Hydro Smart Monitoring Solutions**

M-HAS is a monitoring system developed specifically for renewable energy assets, including wind and hydro power. It captures various environmental and operational data in real-time, enabling users to spot potential issues, stay ahead of maintenance and repairs, and ensure compliance with regulatory requirements.

Users can also enjoy regular check-ups, maintenance and support to keep things running smoothly all year round, as well as annual inspections and reports from the Invisible Systems team.







# Contact Invisible Systems

**Reduce costs, lower energy and become compliant** with our smart monitoring solutions.

Talk to the Invisible Systems team today for a free consultation for your business needs.



**Ready to Take  
Control of your Data?**

For a consultation on your business needs, talk to the Invisible Systems team today.

[hello@invisible-systems.com](mailto:hello@invisible-systems.com)

0161 521 8444

[www.invisible-systems.com](http://www.invisible-systems.com)