

An advertisement for the Sambonet Jet Set Collection. The background is a photograph of a balcony with two tables set for dining. The tables are covered with white lace tablecloths and are surrounded by black metal chairs with white cushions. The balcony is part of a brick building with a white door and a balcony railing. In the distance, there are mountains under a clear blue sky. The text 'sambonet' is written in white at the top, 'JET SET COLLECTION' is written in white below it, and 'DESIGN FROM ITALY WITH LOVE' is written in large yellow letters in the center.

sambonet[®]

JET SET COLLECTION

**DESIGN
FROM ITALY
WITH LOVE**

**TRENDY TEXTURES INSPIRED BY
DREAM HOLIDAY LOCATIONS
AND INTERNATIONAL
JET-SET DESTINATIONS.
A FASHIONABLE RELIEF
ON THE ENTIRE BODY OF THE CUTLERY,
BOTH FRONT AND BACK,
FOR EXTREMELY REFINED
MISE-EN-PLACE.
EXCLUSIVE SEASIDE LOCATIONS
ELITE SKI RESORTS,
ENCHANTING LANDSCAPES
AND CITIES OF ART:
SUGGESTIONS FOR CLASSY SETTINGS
AND UNIQUE ATMOSPHERES.**

sambonet®

**TEXTURE DI TENDENZA ISPIRATE A LUOGHI DI VACANZA DA SOGNO
E ALLE METE DEL JET-SET INTERNAZIONALE.**

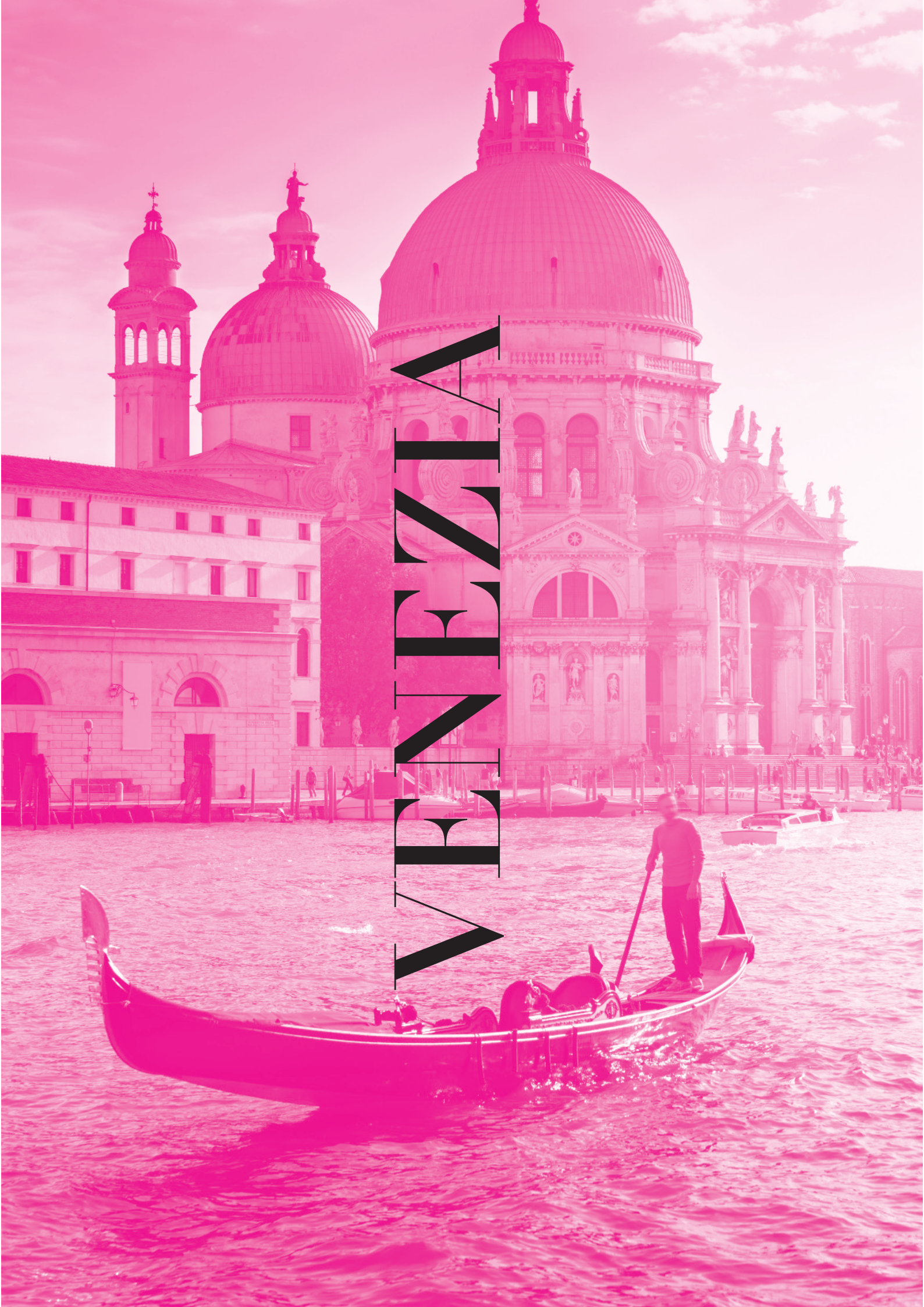
**Un rilievo fashion impresso sull'intero corpo della posata, sia fronte che retro,
per mise-en-place estremamente ricercate. Esclusive destinazioni marittime,
stazioni sciistiche d'élite, paesaggi d'incanto e città d'arte: suggestioni per
allestimenti d'alta classe e atmosfere uniche.**

**DAS DESIGN MIT SEINER MODERNEN TEXTUR GREIFT
DAS ITALIENISCHE LEBENSGEFÜHL UND DEN GLAMOUR
DES INTERNATIONALEN JETSETS AUF.**

**Ob exklusive Küstenorte, angesagte Skigebiete, bezaubernde Natur oder
Kunststädte: Mit der neuen Kollektion Jet Set vermitteln Sie Ihren Gästen Klasse
und Weltgewandtheit. Das Design ist eine Hommage an die faszinierendsten
Ferienorte Italiens von gestern und heute.**

*DES TEXTURES TENDANCE INSPIRÉES DE LIEUX DE VACANCES DE RÊVE
ET DE DESTINATIONS DE LA JET SET INTERNATIONALE.*

*Stations de ski huppées, paysages enchanteurs et villes d'art : Jet Set est source
d'inspiration pour des mises en place de grande classe et des ambiances
uniques. Un voyage émotionnel itinérant qui, à travers des paysages uniques et
des ambiances dynamiques, nous conduit vers quelques-unes des destinations
de vacances italiennes les plus fascinantes d'hier et d'aujourd'hui.*



VENETIA

sambonet





UNUSUAL AND MYSTERIOUS, ORIGINAL AND ROMANTIC
BECAUSE OF ITS REVERBERATIONS, ARCHES AND BRIDGES.



sambonet®

THE RELIEF IS INSPIRED BY THE REFLECTIONS AND RIPPLES OF THE WATER, THE STRIP OF LAND AND THE ARCHITECTURE OF THE CITY.

VENEZIA




sambonet®

Insolita e misteriosa, originale e romantica per via dei suoi riverberi, archi e ponti. Il rilievo si ispira ai riflessi e all'increspatura dell'acqua, ai lembi di terra e all'architettura tipica della città.



Ungewöhnlich und geheimnisvoll, originell und romantisch durch seine Lichtreflexe auf dem Wasser, durch die kunstvollen Bögen und Brücken. Das Relief des Bestecks ist inspiriert vom Kräuseln der Wellen an den Uferbefestigungen und der kunstvollen Architektur.

Insolite, mystérieuse, originale et romantique grâce à ses miroitements, à ses arcades et à ses ponts. Son relief s'inspire des reflets et des ondulations de l'eau, des pans de terre et de l'architecture typique de la ville.



SIENNA

sambonet





SUGGESTIONS AND ROMANTIC DETAILS THAT COME FROM THE TUSCAN MANUFACTURING ART OF WORKING LEATHER. AS CONCRETE AND STRONG AS THE EARTH OF THE HILLS,



sambonet®

THANKS TO THE THICKNESS OF ITS BODY, BUT BEAUTIFUL AND HAUGHTY LIKE THE MEDIEVAL CITY OF SIENA. GREAT FOR NATURALIST MOODS, JUNGLE OR EXTREMELY REFINED OUTDOOR TABLES.

sambonet®

Suggerzioni e romantici dettagli che nascono dall'arte manifatturiera toscana nella lavorazione della pelle. Concreta e forte come la terra delle colline grazie allo spessore del corpo delle posate, ma bella e altera come la città medioevale di Siena. Ideale per mood naturalisti, jungle o tavole outdoor estremamente raffinate.



Romantische Details aus dem Kunsthandwerk der Toskana – der Lederverarbeitung. Durch die Stärke des Materials und die Griffigkeit der Besteckteile hat es etwas von der Kraft der Hügel sowie der Schönheit und dem Stolz der mittelalterlichen Stadt Siena. Ideal für den gehobenen Landhausstil oder ein elegantes Essen im Freien.

Atmosphère et détails romantiques s'inspirent de l'artisanat toscan du cuir. Concrète et forte comme les collines toscanes grâce à l'épaisseur du manche des couverts, mais belle et altière comme la ville médiévale de Sienne. Idéale pour des ambiances naturelles, jungle ou des tables en extérieur extrêmement raffinées.

SIENA



An aerial photograph of a snowy mountain landscape. In the foreground, a road or path winds through the snow. To the right, a small wooden cabin or structure is visible. In the background, a large, rugged mountain peak rises against a clear sky. The entire image has a light blue tint.

CORFINA

sambonet





TRADITION AND NATURE.
THE MOTIF EVOKES THE WEAVE OF WOOL AND LARGE WINTER
PULLOVERS AND BRINGS THE CHARM AND WARMTH

sambonet®



TYPICAL OF HANDMADE PRODUCTS TO THE TABLE. THE COMBINATION WITH HANDCRAFTED WOODS, TEXTILES AND GLASSWARE CAN ADD A DECORATIVE TOUCH TO WINTER OR NORDIC STYLE TABLE SETTINGS.

CORTINA



sambonet®

Intriso di tradizione e spirito naturalistico. Il motivo decorativo riprende la trama della lana e dei grandi pullover invernali e porta in tavola il fascino e il calore tipico dei manufatti handmade. L'abbinamento a legni, tessuti e vetri artigianali può aggiungere un tocco decorativo a mise en place invernali o nordic style.



Tradition und Natur. Das Besteck nimmt die Struktur von warmem, gemütlichen Winterstrick auf und bringt eben dieses Gefühl der handgemachten Dinge auf den Tisch. In Kombination mit Holz, Stoffen und handwerklich gefertigten Gläsern erweckt Cortina das Flair von winterlicher Gemütlichkeit oder nordischem Stil.

Empreint de tradition et d'un esprit nature. Le motif décoratif reprend la texture de la laine et des gros pulls d'hiver et apporte à la table le charme et la chaleur typique des objets faits main. L'association avec des objets artisanaux en bois, en tissu et en verre permet d'ajouter une touche décorative à des mises en place au style hivernal ou scandinave.



PORTOFINO

sambonet





SMALL DROPS IN SUSPENSION, A VIBRANT REVERBERATION.
THE SIMPLE ELEGANCE OF WATER OPENS THE TABLE
TO NEW DECORATIVE SUGGESTIONS.

sambonet



PORTOFINO EVOKES THE UNIQUE SUNSET LIGHT
REFLECTED ON THE WATER OF ONE OF THE MOST
RENOWNED ITALIAN BAYS.

PORTOFINO



sambonet®

Piccole gocce in sospensione, un vibrante reverbero. La semplice eleganza dell'acqua apre la tavola a nuove suggestioni decorative. Portofino evoca l'inedita luce dei tramonti riflessi sull'acqua di una fra le più lussuose baie d'Italia.



Kleine Tropfen in der Schwebe, ein lebendiger Nachhall. Die schlichte Eleganz des Wassers öffnet den Tisch für neue dekorative Vorschläge. Portofino lässt die Reflexe der untergehenden Sonne auf dem Wasser in einer der edelsten Buchten Italiens aufleben.

De petites gouttes en suspension, une réverbération vibrante. L'élégance simple de l'eau ouvre la table à de nouvelles suggestions décoratives. Portofino renvoie à la lumière sans pareille des couchers de soleil qui se reflètent dans l'eau de l'une des baies les plus luxueuses d'Italie.

JET SET

Range

CORTINA / SIENA / VENEZIA

	-01	Table spoon
	-08	Table fork
	-11	Table knife
	-25	Dessert spoon
	-26	Dessert fork
	-27	Dessert knife
	-36	Tea spoon
	-37	Espresso spoon
	-55	Cake fork

PORTOFINO

	-01	Table spoon
	-08	Table fork
	-11	Table knife
	-25	Dessert spoon
	-26	Dessert fork
	-27	Dessert knife
	-36	Tea spoon
	-37	Espresso spoon
	-49	Fish fork
	-50	Fish knife
	-55	Cake fork
	-18	Butter/Kids knife

sambonet®

Finishes

Mirror S/Steel



CORTINA
52522



SIENA
52517

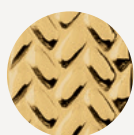


VENEZIA
52565

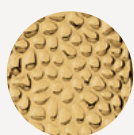


PORTOFINO
52504

Mirror S/Steel PVD Gold



CORTINA
52722G



SIENA
52717G

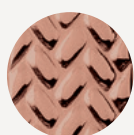


VENEZIA
52765G

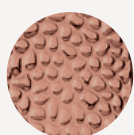


PORTOFINO
52704G

Mirror S/Steel PVD Copper



CORTINA
52722C



SIENA
52717C



VENEZIA
52765C



PORTOFINO
52704C

Credits

Photo

Claudio Tajoli

Special thanks to

Dolce Stil Novo alla Reggia Venaria, Turin

Venezia

Rosenthal – Jade collection porcelain

Siena

Rosenthal – Jade Sphera porcelain

Sambonet – Madame stand collection

Cortina

Rosenthal – Junto Soft Shell, Alabaster & Slate Grey stoneware

Rosenthal – “Vesi” vases by Mikko Laakkonen

Portofino

Rosenthal – Junto Alabaster & Bronze stoneware

Sambonet – Gio Ponti miniatures

Glassware

Rosenthal – DiVino

sambonet®

Via G. Coppo, 1C - 28060 Orfengo (NO) - Italy

Ph. +39 0321 1916 601 - Fax +39 0321 1916 890

horeca@sambonet.it

www.sambonet.com

© COPYRIGHT

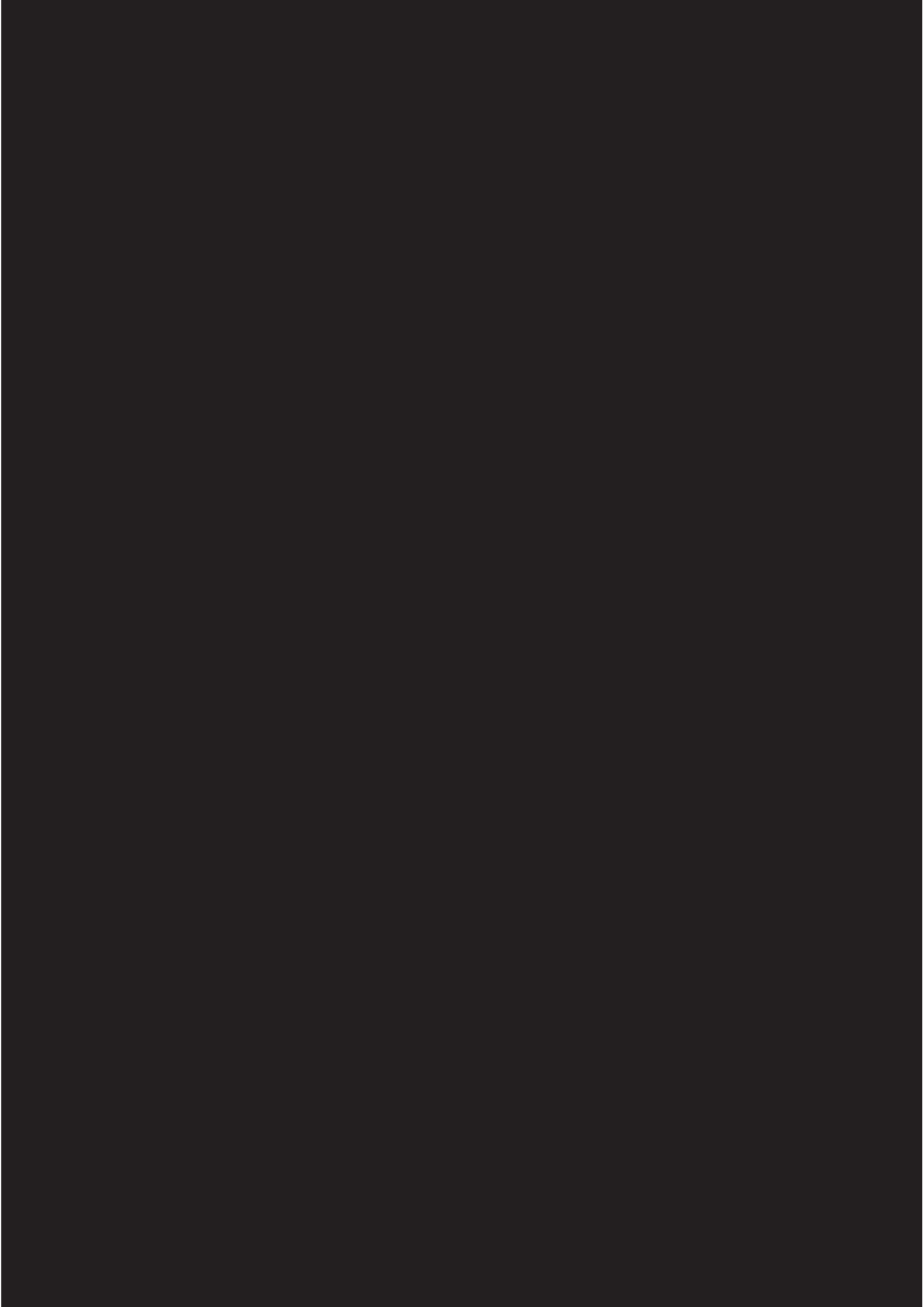
This catalogue may not be reproduced in whole or in part without specific prior written authorization by Sambonet Paderno Industrie S.p.A.

Ogni riproduzione anche parziale del presente catalogo è vietata se non espressamente autorizzata per iscritto da Sambonet Paderno Industrie S.p.A.

NOTES

Dimensions, features and pictures of the products are representative. We reserve the right to alter at any time the specifications stated without notice, whenever technical requirements shall so require.

Misure, caratteristiche e illustrazioni dei prodotti sono indicative e soggette a variazioni senza preavviso qualora esigenze tecnico-produttive lo richiedessero.



sambonet®

www.sambonet.com



XA9105 © 08/2021

