

# GUY-RAYMOND



# COMPONENTS

Komponenten ■ Composants ■ Componentes



- Started 1948
- Family owned
- Manufacturer
- In-House CAD
- In-House R&D
- Multilingual Export Dept
- Exports to 40 countries
- ISO 9001
- ISO 14001



- Gegründet 1948
- Familienbetrieb
- Hersteller
- In-Haus CAD
- In-Haus Entwicklung
- Mehrsprachiges Export Team
- Export in 40 verschiedene Länder
- ISO 9001
- ISO 14001



- Société fondée en 1948
- Entreprise familiale
- Fabricant
- CAD sur place
- R&D sur place
- Equipe export multilingue
- Nous exportons vers 40 pays
- ISO 9001
- ISO 14001



- Empresa fundada en 1948
- Negocio familiar
- Fabricante
- CAD en casa
- I+D en casa
- Equipo de exportación plurilingüe
- Exportamos a 40 países
- ISO 9001
- ISO 14001



**GUY-RAYMOND ENGINEERING COMPANY LIMITED**  
 ROLLESBY ROAD • KING'S LYNN • NORFOLK. PE30 4LX ENGLAND

TEL: 01553 761401  
 FAX: 01553 767459  
 WEB: [www.guy-raymond.com](http://www.guy-raymond.com)

TEL INT: +44 1553 761401  
 FAX INT: +44 1553 767459  
 E-Mail: [info@guy-raymond.co.uk](mailto:info@guy-raymond.co.uk)



# CONTENTS

 P5	 P7	 P8	 P8	 P9
 P11	 P18	 P18	 P21	 P22
 P23	 P24	 P27	 P28	 P30
 P35	 P35	 P36	 P37	 P39
 P40	 P41	 P43	 P47	 P48
 P48	 P49	 P49	 P50	 P52
 P54	 P57	 P57	 P58	 P62

# OFFICE FURNITURE AND DISPLAY COMPONENTS

## INTRODUCTION

### The range includes:-

- Five star bases
- Telescopic gas-spring covers
- 50mm Twin wheel castors
- Brake Unloaded castors
- Brake loaded castors
- Chrome finished castors
- Soft Tyres
- Glides from Ø25 to Ø60mm

## EINFÜHRUNG

### Unser Sortiment beinhaltet:

- Fußkreuze
- Gasfederabdeckungen
- 50mm Doppellenkrollen
- Stuhlrollen unbelastet gebremst
- Rollen belastet gebremst
- Rollen Chrom
- Harte und weiche Laufflächen
- Gleiter mit Ø25mm – Ø60mm

## INTRODUCTION

### La gamme:-

- Piétements cinq branches
- Caches-colonne
- Roulettes 50mm à double galet
- Roulettes autofreinées
- Roulettes freinées sous charge
- Roulettes chromées
- Bandes souples
- Patins de Ø25 jusqu'à Ø60mm

## PRESENTACION

### La gamme incluye:

- Bases de cinco brazos
- Telescópicos
- Ruedas dobles de 50mm
- Ruedas autofrenadas
- Ruedas frenadas al sentarse
- Ruedas cromadas
- Rodadura blanda
- Patas deslizantes de Ø25 a Ø60mm

## ADVANTAGES

- Bases tested to BIFMA and LGA torsion test
- Polyamide castors for long life
- Castors to EN 12529
- Patented dust shield
- Hard or soft wheels to suit carpet or hard floors
- Twin retaining groove axle
- Telescopic covers 75mm to 378mm

## VORTEILE

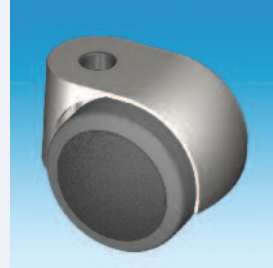
- Fußkreuze zu BIFMA und LGA Standard geprüft
- Rollen aus Polyamid für langes Leben
- Konformität zu EN 12529
- Patentierter Achsenschutz
- Verschiedene Radtypen für unterschiedliche Böden
- Rad an Achse doppelt fixiert durch zwei Rillen an der Achse
- Teleskopische Gasfederabdeckungen von 75mm- 378mm

## AVANTAGES

- Piétements testés aux standards BIFMA et au test de torsion du LGA
- Roulettes en PA pour longévité
- Roulettes conformant à la norme EN 12529
- Capot de protection de l'axe contre la poussière (breveté)
- Roues dures pour sols souples et bandes souples pour sols durs
- Double rainure pour une fixation solide des roues
- Caches-colonne de longueur 75mm jusqu'à 378mm

## VENTAJAS

- Bases probadas según las pruebas de BIFMA y la prueba de torsión del LGA
- Ruedas de nilón para larga duración
- Ruedas conformen a la norma EN12529
- Protector del eje contra el polvo (patentado)
- Rodadura dura para suelos blandos y rodadura blanda para suelos duros
- Ranura doble en el eje para una fijación sólida de las ruedas
- Telescópicos de 75mm a 378mm



## APPLICATIONS

- Office swivel chairs
- Industrial seating
- Checkout chairs
- Contract Chairs
- Office furniture
- Medical equipment
- Shop and display

## ANWENDUNGEN

- Bürostühle
- Industriestühle
- Kassenhocker
- Objektsitze
- Büromöbel
- Medizintechnik
- Ladenbau

## APPLICATIONS

- Sièges de bureau
- Sièges de travail
- Sièges de caisse
- Sièges de collectivité
- Meuble de bureau
- Equipement médical
- Aménagement de magasin

## USOS

- Sillas de oficina
- Sillas de trabajo
- Sillas de caja
- Sillas de colectividad
- Mueble de oficina
- Equipo médico
- Equipo de tiendas

## SPECIAL OPTIONS

### Please enquire

- RAL Colours
- Conductive
- Special fixings
- Customers specification

## SONDEROPTIONEN

### Bitte fragen Sie an!

- RAL Farben
- Leitfähigkeit
- Sonderbefestigungen
- Individuelle Lösungen

## OPTIONS SPECIALES

### Merci de nous contacter

- Autres couleurs RAL
- Antistatique
- Fixations spéciales
- Produit dessiné selon la spécification du client

## OPCIONES ESPECIALES

### Por favor, pide información

- Otros colores RAL
- Antiestático
- Fijaciones especiales
- Producto diseñado según el plan detallado del cliente

# FIVE STAR BASES PLASTIC

## SPECIFICATION

### BASE TYPE

Plastic

### MATERIALS

Glass Reinforced PA

### STANDARD COLOURS

Black

### STANDARDS

BIFMA x 5.1-1993-8.1-8.4

## TECHNISCHE DATEN

### FUSSKREUZ TYP

Kunststoff

### MATERIAL

PA Mit Glasfasern Verstärkt

### STANDARDFARBEN

Schwarz

### NORMEN

BIFMA x 5.1-1993-8.1-8.4

## SPECIFICATION

### TYPE DE PIETEMENT

Plastique

### MATIERES

Polyamide renforcé de verre

### COLORIS STANDARD

Noir

### NORMES

BIFMA x 5.1-1993-8.1-8.4

## ESPECIFICACION

### TIPO DE BASE

Plástico

### MATERIALES

Nílón de vidrio reforzado

### COLORES ESTANDAR

Negro

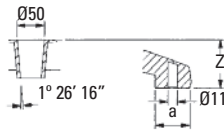
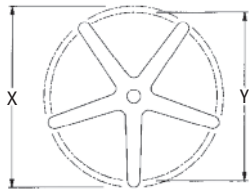
### NORMAS

BIFMA x 5.1-1993-8.1-8.4

NO.		X (ins)	X (mm)	Y (mm)	Z (mm)	a
C-1905-1B0	5 Star Base 1905	22.05	560	520	57	40
C-1906-1B0	5 Star Base 1906	23.60	600	560	64	42
C-2089-1B0	5 Star Base 2089	25.20	640	600	66	44



C-1074-1B0	5 Star Base 1704	23.70	602	561	85	46
C-0841-1B0	5 Star Base 0841	25.20	640	594	88	46



# MEDICAL BASE

## SPECIFICATION

### BASE TYPE

Plastic

### MATERIALS

PP

### STANDARD COLOURS

Black and RAL 7001

### LOAD CAPACITY

25kg Not for Chairs

### REGISTERED DESIGN

Europe

## TECHNISCHE DATEN

### FUSSKREUZ TYP

Kunststoff

### MATERIAL

PP

### STANDARDFARBEN

Schwarz und RAL 7001

### LASTFÄHIGKEIT

25kg Nicht für Stühle geeignet

### MUSTERREGISTER

Europa

## SPECIFICATION

### TYPE DE PIETEMENT

Plastique

### MATIERES

PP

### COLORIS STANDARD

Noir et RAL 7001

### CAPACITE DE CHARGE

25kg Ne convient pas aux sièges

### MODEL DEPOSE

Europe

## ESPECIFICACION

### TIPO DE BASE

Plástico

### MATERIALES

PP

### COLORES ESTANDAR

Negro y RAL 7001

### CAPACIDAD DE CARGA

25kg No apto para sillas

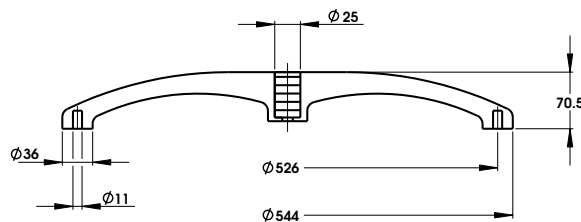
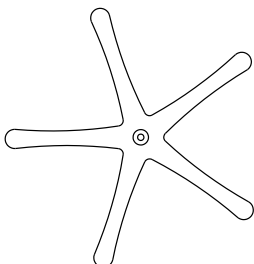
### MODELO REGISTRADO

Europa

C-1725-1B0  
Medi Base 1725 Black



C-1725-92B0  
Medi Base 1725 Grey RAL 7001



# FIVE STAR BASES ALUMINIUM

## SPECIFICATION

### BASE TYPE

Aluminium

### MATERIALS / FINISH

Polished Aluminium

### STANDARDS

BIFMA x 5.1-1993-8.1-8.4

## TECHNISCHE DATEN

### FUSSKREUZ TYP

Aluminium

### MATERIAL / OBERFLÄCHE

Poliertes Aluminium

### NORMEN

BIFMA x 5.1-1993-8.1-8.4

## SPECIFICATION

### TYPE DE PIÈTEMENT

Aluminium

### MATIERES / FINITION

Aluminium Brilliant

### NORMES

BIFMA x 5.1-1993-8.1-8.4

## ESPECIFICACION

### TIPO DE BASE

Aluminio

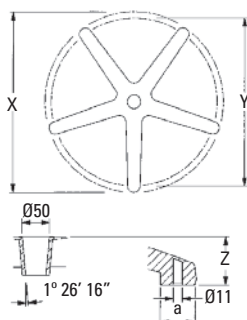
### MATERIALES / ACABADO

Aluminio Pulido

### NORMAS

BIFMA x 5.1-1993-8.1-8.4

NO.		X (mm)	X (ins)	Y (mm)	Z (mm)	a
C-AF05P-BO	Base AF05P Polished	500	19.70	462	61	38
C-AF06P-BO	Base AF06P Polished	610	24.00	568	75	42
C-AF07P-BO	Base AF07P Polished	600	23.60	560	85	40
C-AF08P-BO	Base AF08P Polished	528	20.80	490	55	38
C-AF10P-BO	Base AF10P Polished	610	24.00	572	55	38
C-AF15P-BO	Base AF15P Polished	655	25.80	617	55	38
C-AF17P-BO	Base AF17P Polished	700	27.60	662	58	38
C40X742	Base F90 Polished	656	25.80	620	102	36



# FIVE STAR BASE ADAPTOR BUSHES

## SPECIFICATION MATERIALS

PP  
STANDARD COLOURS  
Black

## TECHNISCHE DATEN MATERIAL

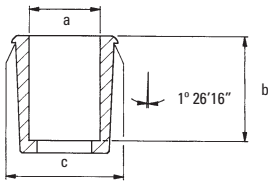
PP  
STANDARDFARBEN  
Schwarz

## SPECIFICATION MATIERES

PP  
COLORIS STANDARD  
Noir

## ESPECIFICACION MATERIALES

PP  
COLORES ESTANDAR  
Negro



NO.		a	b
90051016-36	Chair Base Adaptor 35.8mm	35.8	57
90051016-38	Chair Base Adaptor 38mm	38	57
90051016-40	Chair Base Adaptor 40mm	40	57



# TELESCOPIC GAS SPRING COVERS

## SPECIFICATION MATERIALS

PP  
STANDARD COLOURS  
Black

## TECHNISCHE DATEN MATERIAL

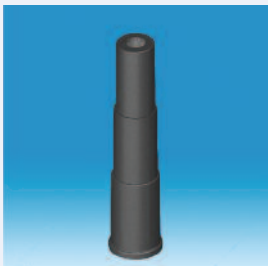
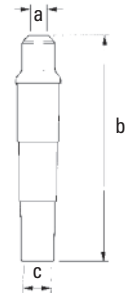
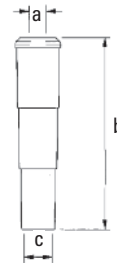
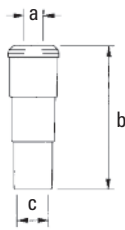
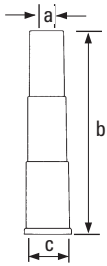
PP  
STANDARDFARBEN  
Schwarz

## SPECIFICATION MATIERES

PP  
COLORIS STANDARD  
Noir

## ESPECIFICACION MATERIALES

PP  
COLORES ESTANDAR  
Negro



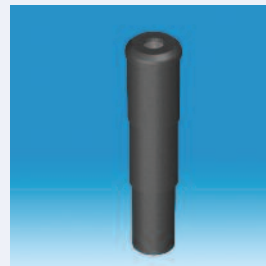
Type 1



Type 2



Type 3



Type 4



Type 5

NO.		a	b	c	Type
90241011-28	4 Part Cover 50/28mm 120-336mm Black	28	120-336	50	1
90211011-28SUD	Short 4 Part UD Cover 50/28mm 75-200mm Black	28	75-200	50	2
90281011-28CUD	Cone 4 Part UD Cover 50/28mm 115-250mm Black	28	115-250	50	3
90111011-28UD	4 Part UD Cover 50/28mm 116-315mm Black	28	116-315	50	4
90121011-28UDL	4 Part UD Long Cover 50/28mm 179-378mm Black	28	179-378	50	5

# GR50FT CASTOR **FREEWHEELING FREILAUFEND NON FREINÉ SIN FRENO**

## SPECIFICATION

### CASTOR TYPE

Swivel

### MATERIALS

Castor PA  
Hard Wheel PA  
Soft Tyre TPE

### STANDARD COLOURS

Black

### STANDARDS

EN 12529

## TECHNISCHE DATEN

### ROLLEN TYP

Lenkrolle

### MATERIAL

Rollen PA  
Harte Räder PA  
Weiche Lauffläche TPE

### STANDARDFARBEN

Schwarz

### NORMEN

EN 12529

## SPECIFICATION

### TYPE DE ROULETTE

Pivotant

### MATIERES

Roulette PA  
Roue dure PA  
Bandes souples TPE

### COLORIS STANDARD

Noir

### NORMES

EN 12529

## ESPECIFICACION

### TIPO DE RUEDA

Giratorio

### MATERIALES

Rueda Nilón  
Rodadura dura nilón  
Rodadura blanda TPE

### COLORES ESTANDAR

Negro

### NORMAS

EN 12529



50



54



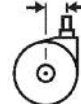
35



7-8



53



19



52



50kg

### NO.

7700-1  
7703-1  
7708-1  
7701-1



-----  
Ø 11 X 22mm  
Ø 10 X 22mm  
Ø 10 X 30mm



54  
57  
57  
54



-  
22  
22  
30

**BLACK - HARD WHEEL**



### NO.

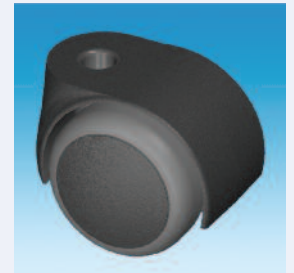
7700-1-1  
7703-1-1  
7708-1-1  
7701-1-1

-----  
Ø 11 x 22mm  
Ø 10 x 22mm  
Ø 10 x 30mm

54  
57  
57  
54

-  
22  
22  
30

**BLACK - SOFT TYRE**



# GR5016 CASTOR **FREEWHEELING FREILAUFEND NON FREINÉ SIN FRENO**



50



54



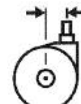
16



7-8



53



19



50



50kg

### NO.

8200-1  
8203-1  
8208-1  
8201-1



-----  
Ø 11 x 22mm  
Ø 10 x 22mm  
Ø 10 x 30mm



54  
57  
57  
54



-  
22  
22  
30

**BLACK - HARD WHEEL**



### NO.

8200-1-1  
8203-1-1  
8208-1-1  
8201-1-1

-----  
Ø 11 x 22mm  
Ø 10 x 22mm  
Ø 10 x 30mm

54  
57  
57  
54

-  
22  
22  
30

**BLACK - SOFT TYRE**



Ø 11 x 22mm

Ø 10 x 22mm

Ø 10 x 30mm





# GR5028 CASTOR FREEWHEELING FREILAUFEND NON FREINÉ SIN FRENO

## SPECIFICATION

### CASTOR TYPE

Swivel

### MATERIALS

Castor PA  
Hard Wheel PA  
Soft Tyre TPE

### STANDARD COLOURS

Black

### STANDARDS

EN 12529

## TECHNISCHE DATEN

### ROLLEN TYP

Lenkrolle

### MATERIAL

Rollen PA  
Harte Räder PA  
Weiche Lauffläche TPE

### STANDARDFARBEN

Schwarz

### NORMEN

EN 12529

## SPECIFICATION

### TYPE DE ROULETTE

Pivotant

### MATIERES

Roulette PA  
Roue dure PA  
Bandes souples TPE

### COLORIS STANDARD

Noir

### NORMES

EN 12529

## ESPECIFICACION

### TIPO DE RUEDA

Giratorio

### MATERIALES

Rueda Nilón  
Rodadura dura Nilón  
Rodadura blanda TPE

### COLORES ESTANDAR

Negro

### NORMAS

EN 12529



50



58



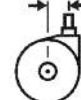
27.5



7-8



53



18



50



50kg



### NO.

9100-1  
9103-1  
9108-1  
9101-1

-----  
Ø 11 x 22mm  
Ø 10 x 22mm  
Ø 10 x 30mm

58  
60  
60  
58

-  
22  
22  
30

**BLACK - HARD WHEEL**



### NO.

9100-1-1  
9103-1-1  
9108-1-1  
9101-1-1

-----  
Ø 11 x 22mm  
Ø 10 x 22mm  
Ø 10 x 30mm

58  
60  
60  
58

-  
22  
22  
30

**BLACK - SOFT TYRE**



# GR5036 CASTOR FREEWHEELING FREILAUFEND NON FREINÉ SIN FRENO



50



58



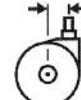
36



7-8



53



18



50



50kg



### NO.

8300-1  
8303-1  
8308-1  
8301-1

-----  
Ø 11 x 22mm  
Ø 10 x 22mm  
Ø 10 x 30mm

58  
60  
60  
58

-  
22  
22  
30

**BLACK - HARD WHEEL**



### NO.

8300-1-1  
8303-1-1  
8308-1-1  
8301-1-1

-----  
Ø 11 x 22mm  
Ø 10 x 22mm  
Ø 10 x 30mm

58  
60  
60  
58

-  
22  
22  
30

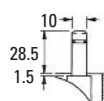
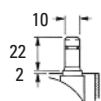
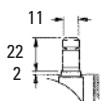
**BLACK - SOFT TYRE**



Ø 11 x 22mm

Ø 10 x 22mm

Ø 10 x 30mm



# GR5038 CASTOR **FREEWHEELING FREILAUFEND NON FREINÉ SIN FRENO**

## SPECIFICATION

### CASTOR TYPE

Swivel

### MATERIALS

Castor PA  
Hard Wheel PA  
Soft Tyre TPE

### STANDARD COLOURS

Black

### STANDARDS

EN 12529

## TECHNISCHE DATEN

### ROLLEN TYP

Lenkrolle

### MATERIAL

Rollen PA  
Harte Räder PA  
Weiche Lauffläche TPE

### STANDARDFARBEN

Schwarz

### NORMEN

EN 12529

## SPECIFICATION

### TYPE DE ROULETTE

Pivotant

### MATIERES

Roulette PA  
Roue dure PA  
Bandes souples TPE

### COLORIS STANDARD

Noir

### NORMES

EN 12529

## ESPECIFICACION

### TIPO DE RUEDA

Giratorio

### MATERIALES

Rueda Nilón  
Rodadura dura nilón  
Rodadura blanda TPE

### COLORES ESTANDAR

Negro

### NORMAS

EN 12529



50



58



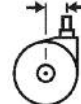
38



7-8



53



18



50



50kg

### NO.

7800-1  
7803-1  
7808-1  
7801-1



-----  
Ø 11 X 22mm  
Ø 10 X 22mm  
Ø 10 X 30mm



58  
60  
60  
58



-  
22  
22  
30

**BLACK - HARD WHEEL**



### NO.

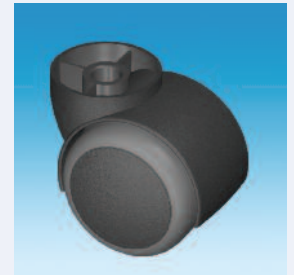
7800-1-1  
7803-1-1  
7808-1-1  
7801-1-1

-----  
Ø 11 x 22mm  
Ø 10 x 22mm  
Ø 10 x 30mm

58  
60  
60  
58

-  
22  
22  
30

**BLACK - SOFT TYRE**



# GR50415 CASTOR **FREEWHEELING FREILAUFEND NON FREINÉ SIN FRENO**



50



58



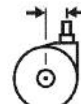
41.5



7-8



53



18



50



50kg

### NO.

8400-1  
8403-1  
8408-1  
8401-1



-----  
Ø 11 x 22mm  
Ø 10 x 22mm  
Ø 10 x 30mm

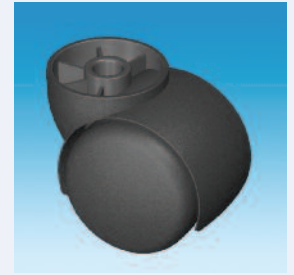


58  
60  
60  
58



-  
22  
22  
30

**BLACK - HARD WHEEL**



### NO.

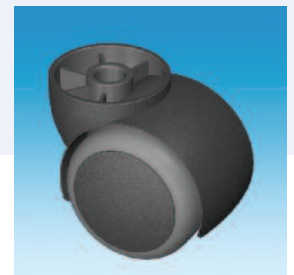
8400-1-1  
8403-1-1  
8408-1-1  
8401-1-1

-----  
Ø 11 x 22mm  
Ø 10 x 22mm  
Ø 10 x 30mm

58  
60  
60  
58

-  
22  
22  
30

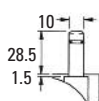
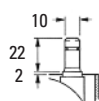
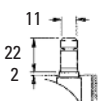
**BLACK - SOFT TYRE**



Ø 11 x 22mm

Ø 10 x 22mm

Ø 10 x 30mm



# GR5045 CASTOR FREEWHEELING FREILAUFEND NON FREINÉ SIN FRENO

## SPECIFICATION

### CASTOR TYPE

Swivel

### MATERIALS

Castor PA  
Hard Wheel PA  
Soft Tyre TPE

### STANDARD COLOURS

Black

### STANDARDS

EN 12529

## TECHNISCHE DATEN

### ROLLEN TYP

Lenkrolle

### MATERIAL

Rollen PA  
Harte Räder PA  
Weiche Lauffläche TPE

### STANDARDFARBEN

Schwarz

### NORMEN

EN 12529

## SPECIFICATION

### TYPE DE ROULETTE

Pivotant

### MATIERES

Roulette PA  
Roue dure PA  
Bandes souples TPE

### COLORIS STANDARD

Noir

### NORMES

EN 12529

## ESPECIFICACION

### TIPO DE RUEDA

Giratorio

### MATERIALES

Rueda Nilón  
Rodadura dura nilón  
Rodadura blanda TPE

### COLORES ESTANDAR

Negro

### NORMAS

EN 12529



50



58



44.5



7-8



53



18



50



50kg

### NO.

8500-1

8503-1

8508-1

8501-1



-----  
Ø 11 x 22mm  
Ø 10 x 22mm  
Ø 10 x 30mm



58  
60  
60  
58



-  
22  
22  
30

**BLACK - HARD WHEEL**



### NO.

8500-1-1

8503-1-1

8508-1-1

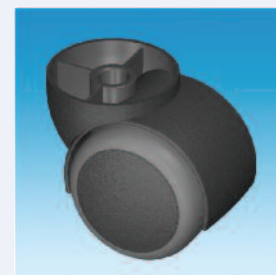
8501-1-1

-----  
Ø 11 x 22mm  
Ø 10 x 22mm  
Ø 10 x 30mm

58  
60  
60  
58

-  
22  
22  
30

**BLACK - SOFT TYRE**



# GR5050 CASTOR FREEWHEELING FREILAUFEND NON FREINÉ SIN FRENO



50



58



50



7-8



53



18



50



50kg

### NO.

8600-1

8603-1

8608-1

8601-1



-----  
Ø 11 x 22mm  
Ø 10 x 22mm  
Ø 10 x 30mm

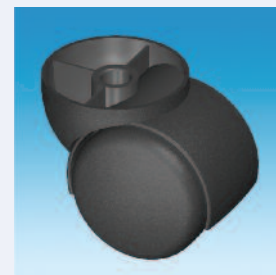


58  
60  
60  
58



-  
22  
22  
30

**BLACK - HARD WHEEL**



### NO.

8600-1-1

8603-1-1

8608-1-1

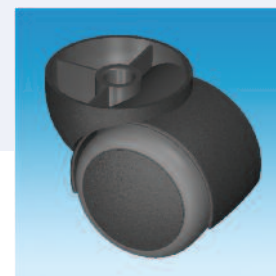
8601-1-1

-----  
Ø 11 x 22mm  
Ø 10 x 22mm  
Ø 10 x 30mm

58  
60  
60  
58

-  
22  
22  
30

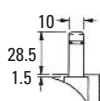
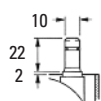
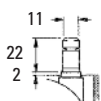
**BLACK - SOFT TYRE**



Ø 11 x 22mm

Ø 10 x 22mm

Ø 10 x 30mm



# GR50FTBU CASTOR BRAKE UNLOADED UNBELASTET GEBREMST AUTOFREINÉ AUTOFRENADO

## SPECIFICATION

### CASTOR TYPE

Brake Unloaded

### MATERIALS

Castor PA  
Hard Wheel PA  
Soft Tyre TPE

### STANDARD COLOURS

Black

### STANDARDS

EN 12529 Type U

## TECHNISCHE DATEN

### ROLLEN TYP

Unbelastet Gebremst

### MATERIAL

Rollen PA  
Harte Räder PA  
Weiche Lauffläche TPE

### STANDARDFARBEN

Schwarz

### NORMEN

EN 12529 Type U

## SPECIFICATION

### TYPE DE ROULETTE

Autofreiné

### MATIERES

Roulette PA  
Roue dure PA  
Bandes souples TPE

### COLORIS STANDARD

Noir

### NORMES

EN 12529 Type U

## ESPECIFICACION

### TIPO DE RUEDA

Autofrenado

### MATERIALES

Rueda Nilón  
Rodadura dura nilón  
Rodadura blanda TPE

### COLORS ESTANDAR

Negro

### NORMAS

EN 12529 Type U



50



54



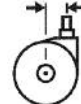
35



7-8



53



19



52



50kg

### NO.

7200-1  
7203-1  
7208-1  
7201-1



-----  
Ø11 x 22mm  
Ø10 x 22mm  
Ø10 x 30mm



54  
57  
57  
54



-  
22  
22  
30

**BLACK - HARD WHEEL**



### NO.

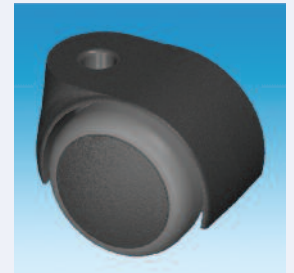
7200-1-1  
7203-1-1  
7208-1-1  
7201-1-1

-----  
Ø 11 x 22mm  
Ø 10 x 22mm  
Ø 10 x 30mm

54  
57  
57  
54

-  
22  
22  
30

**BLACK - SOFT WHEEL**



# GR5016BU CASTOR BRAKE UNLOADED UNBELASTET GEBREMST AUTOFREINÉ AUTOFRENADO



50



54



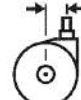
16



7-8



53



19



50



50kg

### NO.

6600-1  
6603-1  
6608-1  
6601-1



-----  
Ø11 x 22mm  
Ø10 x 22mm  
Ø10 x 30mm



54  
57  
57  
54



-  
22  
22  
30

**BLACK - HARD WHEEL**



### NO.

6600-1-1  
6603-1-1  
6608-1-1  
6601-1-1

-----  
Ø 11 x 22mm  
Ø 10 x 22mm  
Ø 10 x 30mm

54  
57  
57  
54

-  
22  
22  
30

**BLACK - SOFT WHEEL**



Ø 11 x 22mm

Ø 10 x 22mm

Ø 10 x 30mm





# GR5028BU CASTOR BRAKE UNLOADED UNBELASTET GEBREMST AUTOFREINÉ AUTOFRENADO

## SPECIFICATION

### CASTOR TYPE

Brake Unloaded

### MATERIALS

Castor PA  
Hard Wheel PA  
Soft Tyre TPE

### STANDARD COLOURS

Black

### STANDARDS

EN 12529 Type U

## TECHNISCHE DATEN

### ROLLEN TYP

Unbelastet Gebremst

### MATERIAL

Rollen PA  
Harte Räder PA  
Weiche Lauffläche TPE

### STANDARDFARBEN

Schwarz

### NORMEN

EN 12529 Type U

## SPECIFICATION

### TYPE DE ROULETTE

Autofreiné

### MATIERES

Roulette PA  
Roue dure PA  
Bandes souples TPE

### COLORIS STANDARD

Noir

### NORMES

EN 12529 Type U

## ESPECIFICACION

### TIPO DE RUEDA

Autofrenado

### MATERIALES

Rueda Nilón  
Rodadura dura nilón  
Rodadura blanda TPE

### COLORES ESTANDAR

Negro

### NORMAS

EN 12529 Type U



50



58



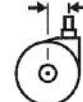
27.5



7-8



53



18



50



50kg



### NO.

9600-1  
9603-1  
9608-1  
9601-1

-----  
Ø 11 x 22mm  
Ø 10 x 22mm  
Ø 10 x 30mm

58  
60  
60  
58

-  
22  
22  
30

**BLACK - HARD WHEEL**



### NO.

9600-1-1  
9603-1-1  
9608-1-1  
9601-1-1

-----  
Ø 11 x 22mm  
Ø 10 x 22mm  
Ø 10 x 30mm

58  
60  
60  
58

-  
22  
22  
30

**BLACK - SOFT WHEEL**



# GR5036BU CASTOR BRAKE UNLOADED UNBELASTET GEBREMST AUTOFREINÉ AUTOFRENADO



50



58



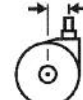
36



7-8



53



18



50



50kg



### NO.

7300-1  
7303-1  
7308-1  
7301-1

-----  
Ø 11 x 22mm  
Ø 10 x 22mm  
Ø 10 x 30mm

58  
60  
60  
58

-  
22  
22  
30

**BLACK - HARD WHEEL**



### NO.

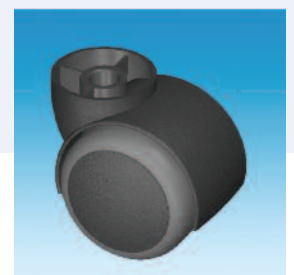
7300-1-1  
7303-1-1  
7308-1-1  
7301-1-1

-----  
Ø 11 x 22mm  
Ø 10 x 22mm  
Ø 10 x 30mm

58  
60  
60  
58

-  
22  
22  
30

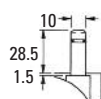
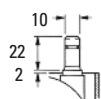
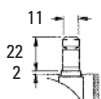
**BLACK - SOFT WHEEL**



Ø 11 x 22mm

Ø 10 x 22mm

Ø 10 x 30mm



# GR5038BU CASTOR BRAKE UNLOADED UNBELASTET GEBREMST AUTOFREINÉ AUTOFRENADO

## SPECIFICATION

### CASTOR TYPE

Brake Unloaded

### MATERIALS

Castor PA

Hard Wheel PA

Soft Tyre TPE

### STANDARD COLOURS

Black

### STANDARDS

EN 12529 Type U

## TECHNISCHE DATEN

### ROLLEN TYP

Unbelastet Gebremst

### MATERIAL

Rollen PA

Harte Räder PA

Weiche Lauffläche TPE

### STANDARDFARBEN

Schwarz

### NORMEN

EN 12529 Type U

## SPECIFICATION

### TYPE DE ROULETTE

Autofreiné

### MATIERES

Roulette PA

Roue dure PA

Bandes souples TPE

### COLORIS STANDARD

Noir

### NORMES

EN 12529 Type U

## ESPECIFICACION

### TIPO DE RUEDA

Autofrenado

### MATERIALES

Rueda Nilón

Rodadura dura nilón

Rodadura blanda TPE

### COLORS ESTANDAR

Negro

### NORMAS

EN 12529 Type U



50



58



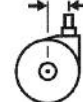
38



7-8



53



18



50



50kg

### NO.

6800-1

6803-1

6808-1

6801-1



Ø 11 x 22mm

Ø 10 x 22mm

Ø 10 x 30mm



58

60

60

58



-

22

22

30

**BLACK - HARD WHEEL**



### NO.

6800-1-1

6803-1-1

6808-1-1

6801-1-1

Ø 11 x 22mm

Ø 10 x 22mm

Ø 10 x 30mm

58

60

60

58

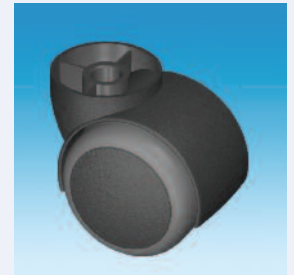
-

22

22

30

**BLACK - SOFT WHEEL**



# GR50415BU CASTOR BRAKE UNLOADED UNBELASTET GEBREMST AUTOFREINÉ AUTOFRENADO



50



58



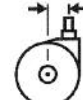
41.5



7-8



53



18



50



50kg

### NO.

6900-1

6903-1

6908-1

6901-1



Ø 11 x 22mm

Ø 10 x 22mm

Ø 10 x 30mm



58

60

60

58



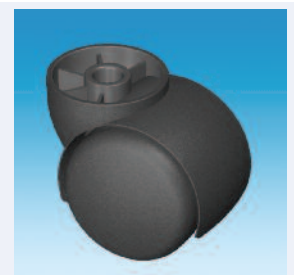
-

22

22

30

**BLACK - HARD WHEEL**



### NO.

6900-1-1

6903-1-1

6908-1-1

6901-1-1

Ø 11 x 22mm

Ø 10 x 22mm

Ø 10 x 30mm

58

60

60

58

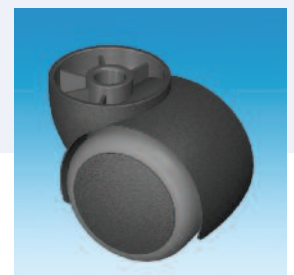
-

22

22

30

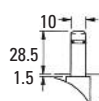
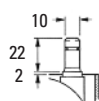
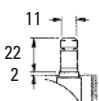
**BLACK - SOFT WHEEL**



Ø 11 x 22mm

Ø 10 x 22mm

Ø 10 x 30mm



# GR5045BU CASTOR BRAKE UNLOADED UNBELASTET GEBREMST AUTOFREINÉ AUTOFRENADO

## SPECIFICATION

### CASTOR TYPE

Brake Unloaded

### MATERIALS

Castor PA

Hard Wheel PA

Soft Tyre TPE

### STANDARD COLOURS

Black

### STANDARDS

EN 12529 Type U

## TECHNISCHE DATEN

### ROLLEN TYP

Unbelastet Gebremst

### MATERIAL

Rollen PA

Harte Räder PA

Weiche Lauffläche TPE

### STANDARDFARBEN

Schwarz

### NORMEN

EN 12529 Type U

## SPECIFICATION

### TYPE DE ROULETTE

Autofreiné

### MATIERES

Roulette PA

Roue dure PA

Bandes souples TPE

### COLORIS STANDARD

Noir

### NORMES

EN 12529 Type U

## ESPECIFICACION

### TIPO DE RUEDA

Autofrenado

Rueda Nilón

Rodadura dura nilón

Rodadura blanda TPE

### COLORS ESTANDAR

Negro

### NORMAS

EN 12529 Type U



50



58



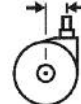
44.5



7-8



53



18



50



50kg

### NO.

7400-1

7403-1

7408-1

7401-1



Ø 11 x 22mm

Ø 10 x 22mm

Ø 10 x 30mm



58

60

60

58



-

22

22

30

**BLACK - HARD WHEEL**



### NO.

7400-1-1

7403-1-1

7408-1-1

7401-1-1

Ø 11 x 22mm

Ø 10 x 22mm

Ø 10 x 30mm

58

60

60

58

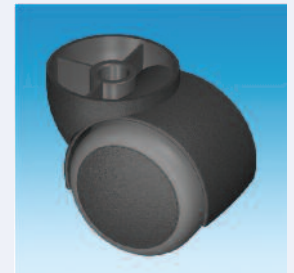
-

22

22

30

**BLACK - SOFT WHEEL**



# GR5050BU CASTOR BRAKE UNLOADED UNBELASTET GEBREMST AUTOFREINÉ AUTOFRENADO



50



58



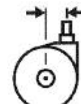
50



7-8



53



18



50



50kg

### NO.

6700-1

6703-1

6708-1

6701-1



Ø 11 x 22mm

Ø 10 x 22mm

Ø 10 x 30mm



58

60

60

58



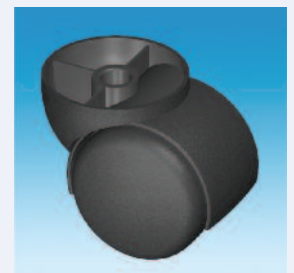
-

22

22

30

**BLACK - HARD WHEEL**



### NO.

6700-1-1

6703-1-1

6708-1-1

6701-1-1

Ø 11 x 22mm

Ø 10 x 22mm

Ø 10 x 30mm

58

60

60

58

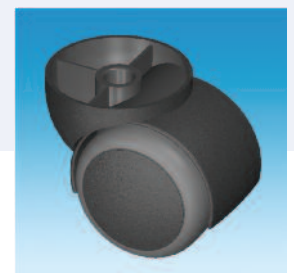
-

22

22

30

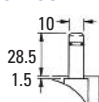
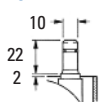
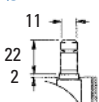
**BLACK - SOFT WHEEL**



Ø 11 x 22mm

Ø 10 x 22mm

Ø 10 x 30mm



# GR5016BL CASTOR BRAKE LOADED BELASTET GEBREMST FREINÉ SOUS CHARGE FRENA CON CARGA

## SPECIFICATION

### CASTOR TYPE

Brake Loaded

### MATERIALS

Castor PA  
Hard Wheel PA  
Soft Tyre TPE

### STANDARD COLOURS

Black

### STANDARDS

EN 12529

## TECHNISCHE DATEN

### ROLLEN TYP

Belastet Gebremst

### MATERIAL

Rollen PA  
Harte Räder PA  
Weiche Lauffläche TPE

### STANDARDFARBEN

Schwarz

### NORMEN

EN 12529

## SPECIFICATION

### TYPE DE ROULETTE

Freiné sous charge

### MATIERES

Roulette PA  
Roue dure PA  
Bandes souples TPE

### COLORIS STANDARD

Noir

### NORMES

EN 12529

## ESPECIFICACION

### TIPO DE RUEDA

Frena con carga

### MATERIALES

Rueda Nilón  
Rodadura dura nilón  
Rodadura blanda TPE

### COLORES ESTANDAR

Negro

### NORMAS

EN 12529



50



55



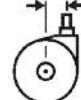
16



7-8



53



19



50



50kg

### NO.

8903-1  
8908-1



Ø 11 x 22mm  
Ø 10 x 22mm



58.5  
58.5



22  
22

**BLACK - HARD WHEEL**



### NO.

8903-1-1  
8908-1-1

Ø 11 x 22mm  
Ø 10 x 22mm

58.5  
58.5

22  
22

**BLACK - SOFT TYRE**



Ø 11 x 22mm

Ø 10 x 22mm



# GR5038BL CASTOR BRAKE LOADED BELASTET GEBREMST FREINÉ SOUS CHARGE FRENA CON CARGA



50



59



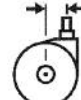
38



7-8



53



19



50



50kg

### NO.

8916-38-1  
8924-38-1



Ø 11 X 22mm  
Ø 10 X 22mm



61  
61



22  
22

**BLACK - HARD WHEEL**



### NO.

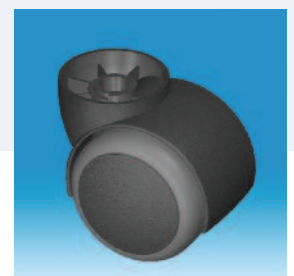
8916-38-1-1  
8924-38-1-1

Ø 11 X 22mm  
Ø 10 X 22mm

61  
61

22  
22

**BLACK - SOFT TYRE**



Ø 11 x 22mm

Ø 10 x 22mm





# GR50415BL CASTOR BRAKE LOADED BELASTET GEBREMST FREINÉ SOUS CHARGE FRENA CON CARGA

## SPECIFICATION

### CASTOR TYPE

Brake Loaded

### MATERIALS

Castor PA  
Hard Wheel PA  
Soft Tyre TPE

### STANDARD COLOURS

Black

### STANDARDS

EN 12529

## TECHNISCHE DATEN

### ROLLEN TYP

Belastet Gebremst

### MATERIAL

Rollen PA  
Harte Räder PA  
Weiche Lauffläche TPE

### STANDARDFARBEN

Schwarz

### NORMEN

EN 12529

## SPECIFICATION

### TYPE DE ROULETTE

Freiné sous charge

### MATIERES

Roulette PA  
Roue dure PA  
Bandes souples TPE

### COLORIS STANDARD

Noir

### NORMES

EN 12529

## ESPECIFICACION

### TIPO DE RUEDA

Frena con carga

### MATERIALES

Rueda Nilón  
Rodadura dura nilón  
Rodadura blanda TPE

### COLORES ESTANDAR

Negro

### NORMAS

EN 12529



50



59



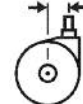
41.5



7-8



53



19



50



50kg

### NO.

8916-415-1

8924-415-1



Ø 11 x 22mm

Ø 10 x 22mm



61

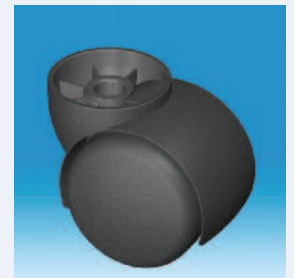
61



22

22

**BLACK - HARD WHEEL**



### NO.

8916-415-1-1

8924-415-1-1

Ø 11 x 22mm

Ø 10 x 22mm

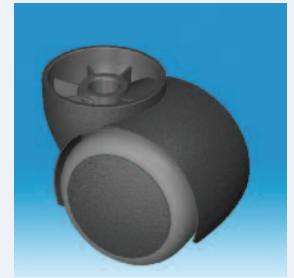
61

61

22

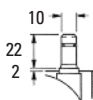
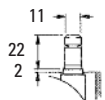
22

**BLACK - SOFT TYRE**



Ø 11 x 22mm

Ø 10 x 22mm



# CHROME50FT CASTOR **FREEWHEELING FREILAUFEND NON FREINÉ SIN FRENO**

## SPECIFICATION

### CASTOR TYPE

Swivel

### FINISH

Chrome Plated

### MATERIALS

Castor Zinc Die-Cast

Hard wheel PA

Soft tyre PUR

### STANDARDS

EN 12529

## TECHNISCHE DATEN

### ROLLEN TYP

Lenkrolle..

### OBERFLÄCHE

Chrom

### MATERIAL

Rolle Zinkdruckguss

Harte Räder PA

Weiche Lauffläche PUR

### NORMEN

EN 12529

## SPECIFICATION

### TYPE DE ROULETTE

Pivotant

### FINITION

Chromé

### MATIERES

Roulette Zinc

Roue dure PA

Bandes souples PUR

### NORMES

EN 12529

## ESPECIFICACION

### TIPO DE RUEDA

Giratorio

### ACABADO

Chapado de Cromo

### MATERIALES

Rueda Zinc

Rodadura dura nilón

Rodadura blanda poliuretano

### NORMAS

EN 12529



50



55



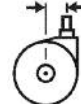
38



7



51



20



52



50kg



### NO.

7703-ZBO

Ø 11 x 22mm

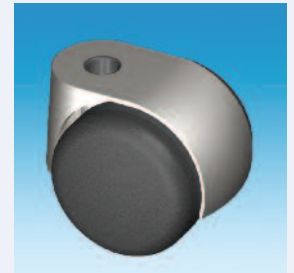


60



22

**CHROME - HARD WHEEL**



### NO.

7703-Z-1UBO

Ø 11 x 22mm

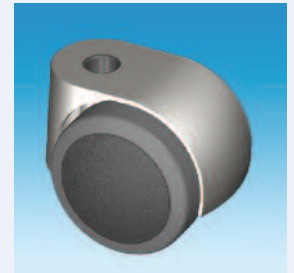


60



22

**CHROME - SOFT TYRE**



# CHROME5016 CASTOR **FREEWHEELING FREILAUFEND NON FREINÉ SIN FRENO**



50



55



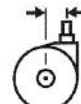
16



7



51



20



51



50kg



### NO.

8203-ZBO

Ø 11 x 22mm



60



22

**CHROME - HARD WHEEL**



### NO.

8203-Z-1UBO

Ø 11 x 22mm



60



22

**CHROME - SOFT TYRE**



# CHROME5016BU CASTOR BRAKE UNLOADED UNBELASTET GEBREMST AUTOFREINÉ AUTOFRENADO

## SPECIFICATION

### CASTOR TYPE

Brake Unloaded

### FINISH

Chrome Plated

### MATERIALS

Castor Zinc Die-Cast

Hard Wheel PA

Soft Tyre PUR

### STANDARDS

EN 12529 Type U

## TECHNISCHE DATEN

### ROLLEN TYP

Unbelastet Gebremst

### OBERFLÄCHE

Chrom

### MATERIAL

Rolle Zinkdruckguss

Harte Räder PA

Weiche Lauffläche PUR

### NORMEN

EN 12529 Type U

## SPECIFICATION

### TYPE DE ROULETTE

Autofreiné

### FINITION

Chromé

### MATIERES

Roulette Zinc

Roue dure PA

Bandes souples PUR

### NORMES

EN 12529 Type U

## ESPECIFICACION

### TIPO DE RUEDA

Autofrenado

### ACABADO

Chapado de cromo

### MATERIALES

Rueda Zinc

Rodadura dura nilón

Rodadura blanda poliuretano

### NORMAS

EN 12529 Type U



50



55



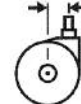
16



7



51



20



51



50kg

### NO.

6603-ZBO



Ø11 x 22mm



60



22

**BLACK - HARD WHEEL**



### NO.

6603-Z-1UBO

Ø11 x 22mm

60

22

**BLACK - SOFT WHEEL**



# CHROME50FTBU CASTOR BRAKE UNLOADED UNBELASTET GEBREMST AUTOFREINÉ AUTOFRENADO



50



55



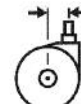
38



7



51



20



52



50kg

### NO.

7203-ZBO



Ø11 x 22mm

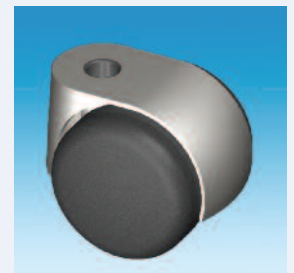


60



22

**BLACK - HARD WHEEL**



### NO.

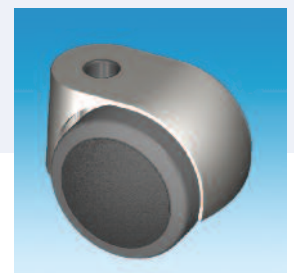
7203-Z-1UBO

Ø11 x 22mm

60

22

**BLACK - SOFT WHEEL**



Ø 11 x 22mm



11  
22  
3.5

# CHROME5016BL CASTOR BRAKE LOADED BELASTET GEBREMST FREINÉ SOUS CHARGE FRENA CON CARGA

## SPECIFICATION

### CASTOR TYPE

Brake Loaded

### FINISH

Chrome Plated

### MATERIALS

Castor Zinc Die-Cast

Soft Tyre PUR

### STANDARDS

EN 12529

## TECHNISCHE DATEN

### ROLLEN TYP

Belastet Gebremst

### OBERFLACHE

Chrom

### MATERIAL

Rolle Zinkdruckguss

Weiche Lauffläche PUR

### NORMEN

EN 12529

## SPECIFICATION

### TYPE DE ROULETTE

Freiné sous charge

### FINITION

Chromé

### MATIERES

Roulette Zinc

Bandes souples PUR

### NORMES

EN 12529

## ESPECIFICACION

### TIPO DE RUEDA

Frena con carga

### ACABADO

Chapado de cromo

### MATERIALES

Rueda Zinc

Rodadura blanda PUR

### NORMAS

EN 12529



50



55



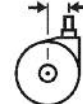
17



7



51.5



20



51



50kg

### NO.

8903-Z-1UB0



Ø11 x 22mm



60



22

**BLACK - SOFT WHEEL**



Ø 11 x 22mm

Ø 10 x 22mm





# GLIDES - TILT CIRCLIP STEM

## SPECIFICATION

**GLIDE TYPE**  
Tilt Circlip Stem  
**MATERIALS**  
Stem Steel BZP  
Base See Below  
**STANDARD COLOURS**  
Black

## TECHNISCHE DATEN

**GLEITER TYP**  
Gelenk Teller mit Federring  
**MATERIAL**  
Stift Stahl Verzinkt  
Teller Siehe Unten  
**STANDARDFARBEN**  
Schwarz

## SPECIFICATION

**TYPE DE PATIN**  
Tige à clips (orientable)  
**MATIERES**  
Tige Acier, plaqué de zinc  
Base Voir ci-dessous  
**COLORIS STANDARD**  
Noir

## ESPECIFICACION

**TIPO DE PATA**  
Vástago orientable con anillo de sujeción  
**MATERIALES**  
Vástago Acero, chapado de zinc  
Base Ver abajo  
**COLORES ESTANDAR**  
Negro



### NO.

6408-25-1  
6403-25-1

Ø10 x 22  
Ø11 x 22

25  
25

50  
50

PE  
PE



### NO.

6408-32-1  
6403-32-1

Ø10 x 22  
Ø11 x 22

32  
32

75  
75

PE  
PE



### NO.

6408-40-1  
6403-40-1

Ø10 x 22  
Ø11 x 22

40  
40

75  
75

PE  
PE



### NO.

6408-47-1  
6403-47-1

Ø10 x 22  
Ø11 x 22

47  
47

200  
200

PP  
PP



### NO.

6408-55-1  
6403-55-1

Ø10 x 22  
Ø11 x 22

55  
55

200  
200

PP  
PP



# GR50 GLIDES

## SPECIFICATION

### MATERIALS

Stem Steel BZP  
Base PA

### STANDARD COLOURS

Black

## TECHNISCHE DATEN

### MATERIAL

Stift Stahl Verzinkt  
Teller PA

### STANDARDFARBEN

Schwarz

## SPECIFICATION

### MATIERES

Tige Acier, plaqué de zinc  
Base PA

### COLORIS STANDARD

Noir

## ESPECIFICACION

### MATERIALES

Vástago Acero, chapado de zinc  
Base Nilón

### COLORES ESTANDAR

Negro



50



36



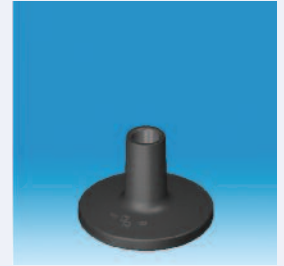
14



### GR 50 GLIDE 1436

#### NO.

9900-1436-1	-----	36	---	50
9903-1436-1	Ø11 x 22	39.5	22	50
9908-1436-1	Ø10 x 22	39.5	22	50
9920-1436-1	M8 x 15	42.5	15	50
9902-1436-1	M10 x 15	42.5	15	50



50



38



28



### GR 50 GLIDE 2836

#### NO.

9400-2836-1	-----	36	---	50
9403-2836-1	Ø11 x 22	39.5	22	50
9408-2836-1	Ø10 x 22	39.5	22	50
9420-2836-1	M8 x 15	42.5	15	50
9402-2836-1	M10 x 15	42.5	15	50



50



36



36



### GR 50 GLIDE 3636

#### NO.

9400-3636-1	-----	36	---	50
9403-3636-1	Ø11 x 22	39.5	22	50
9408-3636-1	Ø10 x 22	39.5	22	50
9420-3636-1	M8 x 15	42.5	15	50
9402-3636-1	M10 x 15	42.5	15	50



## SPECIFICATION

### MATERIALS

Stem Steel BZP  
Base PA

### STANDARD COLOURS

Black

## TECHNISCHE DATEN

### MATERIAL

Stift Stahl Verzinkt  
Teller PA

### STANDARDFARBEN

Schwarz

## SPECIFICATION

### MATIERES

Tige Acier, plaqué de zinc  
Base PA

### COLORIS STANDARD

Noir

## ESPECIFICACION

### MATERIALES

Vástago Acero, chapado de zinc  
Base Nilón

### COLORES ESTANDAR

Negro



50



56



36



### GR 50 GLIDE 3656

#### NO.

9400-3656-1	-----	56	---	50
9403-3656-1	Ø11 x 22	59.5	22	50
9408-3656-1	Ø10 x 22	59.5	22	50
9420-3656-1	M8 x 15	62.5	15	50
9402-3656-1	M10 x 15	62.5	15	50



50



36



41.5



### GR 50 GLIDE 41536

#### NO.

9400-41536-1	-----	36	---	50
9403-41536-1	Ø11 x 22	39.5	22	50
9408-41536-1	Ø10 x 22	39.5	22	50
9420-41536-1	M8 x 15	42.5	15	50
9402-41536-1	M10 x 15	42.5	15	50



50



56



41.5



### GR 50 GLIDE 41556

#### NO.

9400-41556-1	-----	56	---	50
9403-41556-1	Ø11 x 22	59.5	22	50
9408-41556-1	Ø10 x 22	59.5	22	50
9420-41556-1	M8 x 15	62.5	15	50
9402-41556-1	M10 x 15	62.5	15	50



# GR50 AND GR60 GLIDES

## SPECIFICATION

### MATERIALS

Stem Steel BZP  
Base PA

### STANDARD COLOURS

Black

## TECHNISCHE DATEN

### MATERIAL

Stift Stahl Verzinkt  
Teller PA

### STANDARDFARBEN

Schwarz

## SPECIFICATION

### MATIERES

Tige Acier, plaqué de zinc  
Base PA

### COLORIS STANDARD

Noir

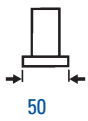
## ESPECIFICACION

### MATERIALES

Vástago Acero, chapado de zinc  
Base Nilón

### COLORES ESTANDAR

Negro



### GR 50 GLIDE 0011

#### NO.

6510-1  
6514-1

Ø11 x 22  
Ø9 x 28.5

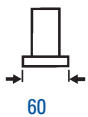
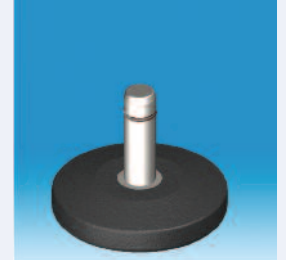
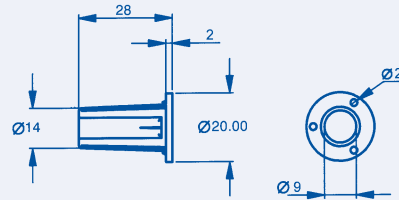
14.5  
11

22  
28.5

50  
50

9245

Metal Bush For 9mm Stem



### GR 60 GLIDE 5036

#### NO.

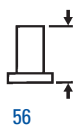
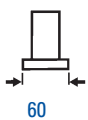
9800-5036-1  
9803-5036-1  
9808-5036-1  
9820-5036-1  
9802-5036-1

-----  
Ø11 x 22  
Ø10 x 22  
M8 x 15  
M10 x 15

36  
39.5  
39.5  
42.5  
42.5

---  
22  
22  
15  
15

50  
50  
50  
50  
50



### GR 60 GLIDE 5056

#### NO.

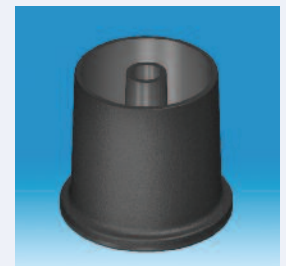
9800-5056-1  
9803-5056-1  
9808-5056-1  
9820-5056-1  
9802-5056-1

-----  
Ø11 x 22  
Ø10 x 22  
M8 x 15  
M10 x 15

56  
59.5  
59.5  
62.5  
62.5

---  
22  
22  
15  
15

50  
50  
50  
50  
50





## SPECIFICATION

### MATERIALS

Stem Steel BZP  
Base PA

### STANDARD COLOURS

Black

## TECHNISCHE DATEN

### MATERIAL

Stift Stahl Verzinkt  
Teller PA

### STANDARDFARBEN

Schwarz

## SPECIFICATION

### MATIERES

Tige Acier, plaqué de zinc  
Base PA

### COLORIS STANDARD

Noir

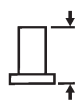
## ESPECIFICACION

### MATERIALES

Vástago Acero, chapado de zinc  
Base Nilón

### COLORES ESTANDAR

Negro



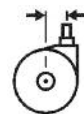
53.5



16



25



7.5



35



## SN GLIDE

### NO.

7100-1  
7103-1  
7108-1  
7120-1  
7102-1

-----  
Ø11 x 22  
Ø10 x 22  
M8 x 15  
M10 x 15

53.5  
57  
57  
60  
60

---  
22  
22  
15  
15

50  
50  
50  
50  
50



# GRX30 GR40 and GR50 CASTOR RANGE

## INTRODUCTION

Our standard castor range includes:

- Ø30mm swivel and wheel brake option
- Ø40mm swivel
- Ø50mm swivel and wheel brake option
- UNI CASTOR Ø40mm height adjustable

## EINFÜHRUNG

Unser Standardsortiment beinhaltet:

- Ø30mm Doppellenkrolle auch mit Feststeller
- Ø40mm Doppellenkrolle
- Ø50mm Doppellenkrollen auch mit Feststeller
- Ø40mm UNI CASTOR höhenverstellbar

## INTRODUCTION

Notre gamme de roulettes standard:

- Ø30mm avec et sans frein
- Ø40mm sans frein
- Ø50mm avec et sans frein
- UNI CASTOR Ø40mm réglable en hauteur

## PRESENTACION

Nuestra gama de ruedas estándar:

- Ø30mm sin freno y rueda con freno
- Ø40mm sin freno
- Ø50mm sin freno y rueda con freno
- UNI CASTOR Ø40mm altura ajustable

## ADVANTAGES

- GRNP30 and GRNP30FB have low height of 30mm and 50kg load rating
- GR40 is available with a wide range of stock fittings
- Polyamide castors for long life
- Patented dust shield on GR50 castors
- UNI CASTOR has up to 20mm of height adjustment

## VORTEILE

- Eine geringe Bauhöhe jedoch 50kg Tragkraft bei Rolle GRNP30FB
- GR40 ist mit vielen Befestigungsmöglichkeiten erhältlich
- Polyamid Rollen für langes Leben
- Patentierter Achsenschutz bei Rolle GR50
- Typ UNI CASTOR bis zu 20mm verstellbar en hauteur de 20mm

## AVANTAGES

- Les roulettes GRNP30 et GRNP30FB ont une hauteur de seulement 30mm mais une capacité de charge de 50kg
- La roulette GR40 est disponible avec une gamme étendue de fixations standard
- Roulettes en PA pour longévité
- Capot de protection de l'axe contre la poussière (breveté) sur les roulettes GR50
- La roulette "unicastor" est réglable es ajustable de 20mm

## VENTAJAS

- Las ruedas GRNP30 y GRNP30FB tienen una altura de solamente 30mm pero una capacidad de carga de 50kg
- La rueda GR40 está disponible con una gran gama de fijaciones estándar
- Ruedas de nilón para larga duración
- Protector del eje contra el polvo (patentado) sobre las ruedas GR50
- La altura de la rueda "unicastor" es ajustable de 20mm



## APPLICATIONS

- Office furniture
- Industrial furniture
- Contract furniture
- Medical equipment
- Shop and display
- Home furniture
- TV and HI-FI
- Flat Pack Furniture

## ANWENDUNGEN

- Büromöbel
- Industriemöbel
- Objektmöbel
- Medizintechnik
- Ladenbau
- Wohnmöbel
- TV & Hi-Fi Ständer
- Mitnahmemöbel

## APPLICATIONS

- Meuble de bureau
- Meuble industriel
- Meuble de collectivité
- Equipement médical
- Aménagement de magasin
- Meubles domestiques
- Meubles de TV/Hi-Fi
- Meubles en kit

## USOS

- Mueble de oficina
- Mueble industrial
- Mueble de colectividad
- Equipo médico
- Equipo de tiendas
- Muebles domesticos
- Muebles de TV/Hi-Fi
- Muebles en kit

## SPECIAL OPTIONS

Please enquire

- RAL Colours
- Conductive
- Special fixings
- Customers specification

## SONDEROPTIONEN

Bitte fragen Sie an!

- RAL Farben
- Leitfähigkeit
- Sonderbefestigungen
- Individuelle Lösungen

## OPTIONS SPECIALES

Merci de nous contacter

- Autres couleurs RAL
- Antistatique
- Fixations spéciales
- Produit dessiné selon la spécification du client

## OPCIONES ESPECIALES

Por favor, pide información

- Otros colores RAL
- Antiestático
- Fijaciones especiales
- Producto diseñado según el plan detallado del cliente

# HEIGHT ADJUSTABLE CASTOR - UNI CASTOR

## SPECIFICATION

### CASTOR TYPE

Swivel, Height Adjustable

### MATERIALS

Castor PA  
Hard Wheel PA  
Stem Steel BZP

### LOAD CAPACITY

50 kg

### STANDARD COLOURS

Black

## TECHNISCHE DATEN

### ROLLEN TYP

Lenkrolle, höhenverstellbar

### MATERIAL

Rollen PA  
Harte Räder PA  
Schraube Stahl Verzinkt

### LASTFÄHIGKEIT

50 kg

### STANDARDFARBEN

Schwarz

## SPECIFICATION

### TYPE DE ROULETTE

Pivotant, à hauteur réglable

### MATIERES

Roulette PA  
Roue dure PA  
Tige Acier, plaqué de zinc

### CAPACITE DE CHARGE

50 kg

### COLORIS STANDARD

Noir

## ESPECIFICACION

### TIPO DE RUEDA

Giratorio, de altura ajustable

### MATERIALES

Rueda Nilón  
Rodadura dura Nilón  
Vástago Acero, chapado de zinc

### CAPACIDAD DE CARGA

50 kg

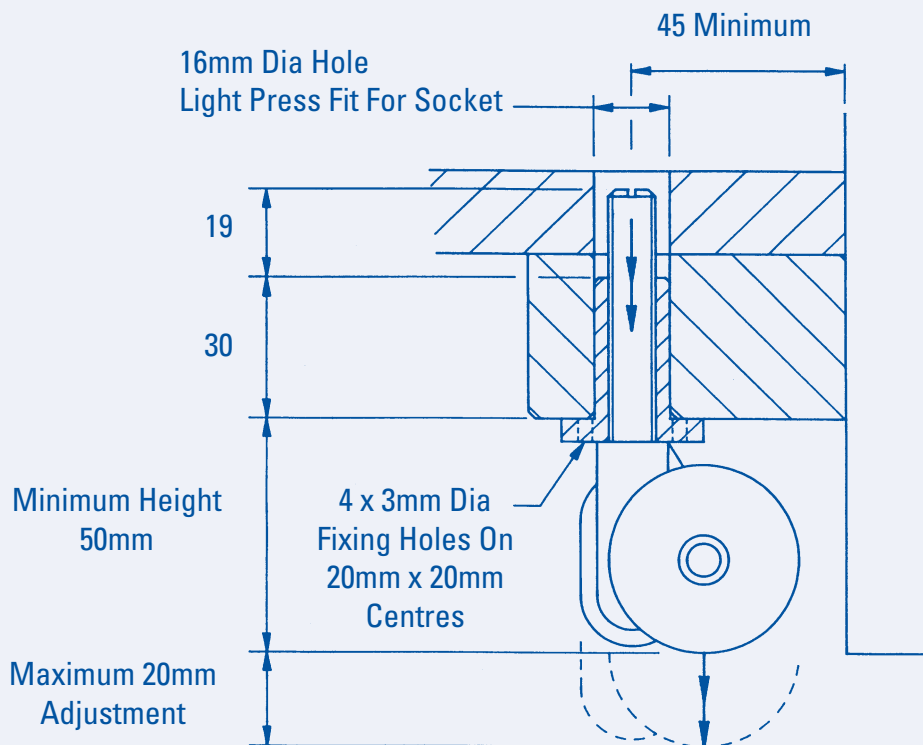
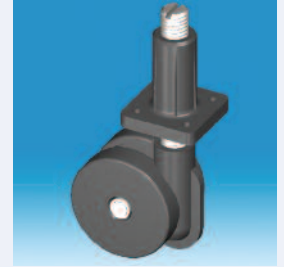
### COLORES ESTANDAR

Negro

## NO.

9740-1-9541-1

Uni-Castor With M10 Nylon Socket Fully Assembled



# GRX30 & GRX30FB CASTOR

## SPECIFICATION

### CASTOR TYPE

GRX30 Swivel  
GRX30FB Wheel Brake

### MATERIALS

Castor PA  
Hard Wheel PA  
Soft Tyre PUR

### STANDARD COLOURS

Black

### STANDARDS

EN 12528

## TECHNISCHE DATEN

### ROLLEN TYP

GRX30 Lenkrolle  
GRX30FB Radfeststeller

### MATERIAL

Rollen PA  
Harte Räder PA  
Weiche Lauffläche PUR

### STANDARDFARBEN

Schwarz

### NORMEN

EN 12528

## SPECIFICATION

### TYPE DE ROULETTE

GRX30 Pivotant  
GRX30FB Blocage de Roue

### MATIERES

Roulette PA  
Roue dure PA  
Bandes Souples PUR

### COLORIS STANDARD

Noir

### NORMES

EN 12528

## ESPECIFICACION

### TIPO DE RUEDA

GRNP30 Giratorio  
GRX30FB Rueda con freno

### MATERIALES

Rueda Nilón  
Rodadura dura Nilón  
Rodadura Blanda Poliuretano

### COLORES ESTANDAR

Negro

### NORMAS

EN 12528



30



30



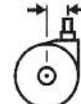
14



9.5



40



15



35 & 42



50kg & 40kg (SOFT)

### NO.

4100-1

GRX30

BLACK - HARD WHEEL

4100-1-1U

GRX30 Soft Tyre

BLACK - SOFT TYRE

### NO.

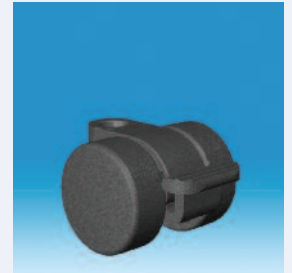
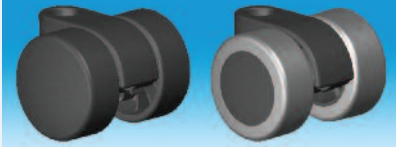
4200-1

GRX30FB

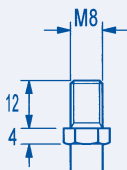
BLACK - HARD WHEEL

HARD

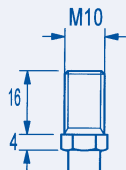
SOFT



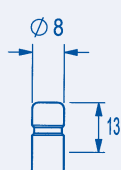
## GRX30 & GRX30FB FITTINGS



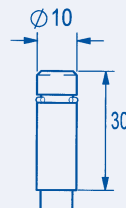
M8 x 12  
No.1900P



M10 x 16  
No.1906P



Ø8 x 13  
No.1910P



Ø10 x 30  
No.1911P

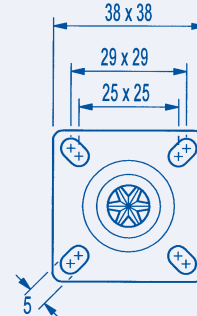


PLATE FIXING  
No.1902-9209

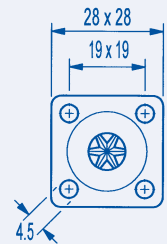
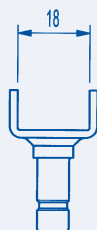


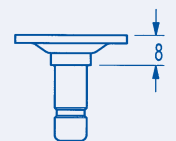
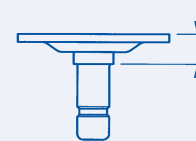
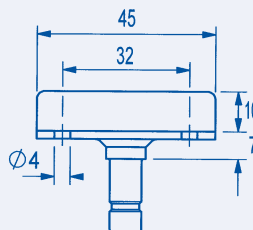
PLATE FIXING  
No.1901-9231



15mm "U" BRACKET  
No.9200-1901



18mm "U" BRACKET  
No.9201-1901



# GRX30 & GRX30FB WITH PLASTIC SOCKETS OR U BRACKETS

## SPECIFICATION

### CASTOR TYPE

Swivel GRX30  
Wheel Brake GRX30FB

### MATERIALS

Castor PA  
Soft Tyre PUR  
Socket & U Brackets  
Glass Reinforced PA  
Stem Steel BZP

### STANDARD COLOURS

Black

### STANDARDS

EN 12528

## TECHNISCHE DATEN

### ROLLEN TYP

Lenkrolle GRX30  
Radfesteller GRX30FB

### MATERIAL

Rollen PA  
Weiche Lauffläche PUR  
Hülse & U-Profil  
PA mit Glasfasern verstärkt  
Schraube Stahl verzinkt

### STANDARDFARBEN

Schwarz

### NORMEN

EN 12528

## SPECIFICATION

### TYPE DE ROULETTE

GRX30 Pivotant  
GRX30FB Blocage de Roue

### MATIERES

Roulette PA  
Bandes Souples PUR  
Douille & Etriers  
Polyamide renforcé de verre  
Tige Acier, plaqué de zinc

### COLORIS STANDARD

Noir

### NORMES

EN 12528

## ESPECIFICACION

### TIPO DE RUEDA

GRNP30 Giratorio  
GRNP30FB Rueda con freno

### MATERIALES

Rueda Nilón  
Rodadura Blanda Poliuretano  
Taco & Soportes  
Nilón de vidrio reforzado  
Vástago Acero, chapado de zinc

### COLORES ESTANDAR

Negro

### NORMAS

EN 12528



30



30



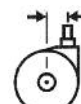
14



9.5



40



15



35 & 42



50kg & 40kg (SOFT)



### NO.

4144-1

GRX30 Ø8 x 13mm

30

13

**BLACK -  
HARD WHEEL**

4144-1-U

GRX30 Soft Tyre Ø8 x 13mm

30

13

**BLACK -  
SOFT TYRE**



### NO.

4244-1

GRX30FB Ø8 x 13mm

30

13

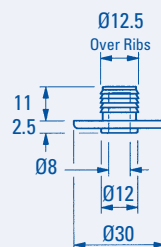
**BLACK - HARD WHEEL**



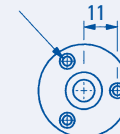
### NO.

93311014-8

8mm CASTOR SOCKET FOR 12mm HOLE



3 Countersunk  
Holes Ø3mm



### NO.

93271014-8

93291014-8

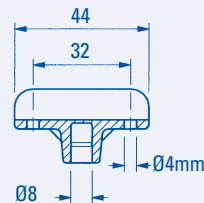
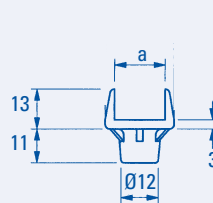
93301014-8

### a

15mm Nylon "U" bracket - 8mm hole

16mm Nylon "U" bracket - 8mm hole

18mm nylon "U" bracket - 8mm hole





# GR40 CASTOR **FREEWHEELING FREILAUFEND NON FREINÉ SIN FRENO**

## SPECIFICATION

### CASTOR TYPE

Swivel

### MATERIALS

Castor PA  
Hard Wheel PA

### STANDARD COLOURS

Black

### STANDARDS

EN 12528

## TECHNISCHE DATEN

### ROLLEN TYP

Lenkrolle

### MATERIAL

Rollen PA  
Harte Räder PA

### STANDARDFARBEN

Schwarz

### NORMEN

EN 12528

## SPECIFICATION

### TYPE DE ROULETTE

Pivotant

### MATIERES

Roulette PA  
Roue dure PA

### COLORIS STANDARD

Noir

### NORMES

EN 12528

## ESPECIFICACION

### TIPO DE RUEDA

Giratorio

### MATERIALES

Rueda Nilón  
Rodadura dura nilón

### COLORES ESTANDAR

Negro

### NORMAS

EN 12528



40



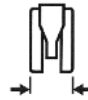
41



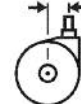
11



8



34.5



12.5



37



30kg



### NO.

8000-1  
8059-1  
8064-1  
8063-1  
8067-1

-----  
7 x 13mm  
7 x 22mm  
M8 x 12mm  
M6 x 12mm

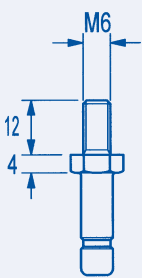
41  
41  
41  
45  
45

-  
13  
22  
12  
12

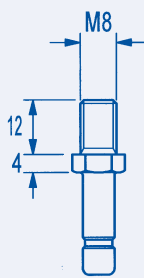
**BLACK - HARD WHEEL**



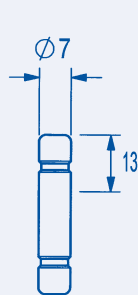
## GR40 FITTINGS



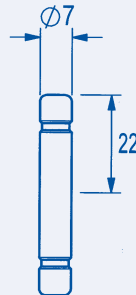
M6 x 12  
No.1925P



M8 x 12  
No.1922P



Ø7 x 13  
No.1918P



Ø7 x 22  
No.1920P

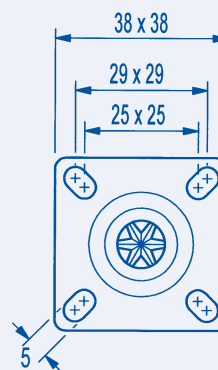


PLATE FIXING  
No.1919-9209

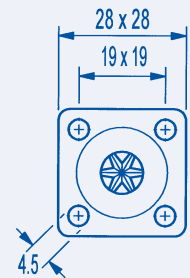


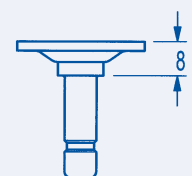
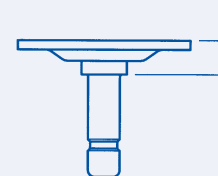
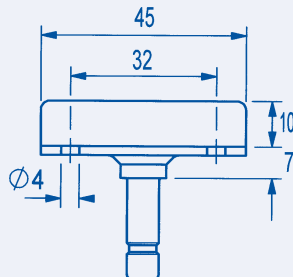
PLATE FIXING  
No.1921-9231



15mm "U" BRACKET  
No.9200-1921



18mm "U" BRACKET  
No.9201-1921



# GR40 CASTOR WITH PLASTIC SOCKETS AND U BRACKETS

## SPECIFICATION

### MATERIALS

Castor PA  
Sockets & U Brackets  
Glass reinforced PA

### STANDARD COLOURS

Black

### LOAD CAPACITY

30 kg

## TECHNISCHE DATEN

### MATERIAL

Rollen PA  
Hülse & U Profil  
PA mit Glasfasern verstärkt

### STANDARDFARBEN

Schwarz

### LASTFAHIGKEIT

30 kg

## SPECIFICATION

### MATIERES

Roulette PA  
Douille & Etriers  
Polyamide renforcé de verre

### COLORIS STANDARD

Noir

### CAPACITE DE CHARGE

30 kg

## ESPECIFICACION

### MATERIALES

Rueda Nilón  
Taco & Soportes  
Nilón de vidrio reforzado

### COLORES ESTANDAR

Negro

### CAPACIDAD DE CARGA

30 kg



40



41



11



8



34.5



12.5



37



30kg



### NO.

8059 - 1

GR40 with  $\varnothing 7 \times 13$ mm

41

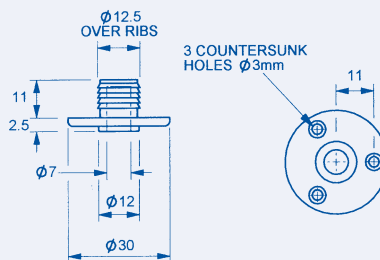
13



### NO.

93311014 - 7

7mm Castor Socket for 12mm Hole



### NO.

93271014 - 7  
93291014 - 7  
93301014 - 7

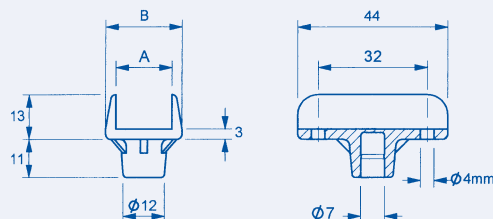
15mm Nylon "U" Bracket - 7mm Hole  
16mm Nylon "U" Bracket - 7mm Hole  
18mm Nylon "U" Bracket - 7mm Hole

### A

15mm  
16mm  
18mm

### B

21.5mm  
22.5mm  
24.5mm



# GR50 FITTINGS

## SPECIFICATION

### MATERIALS

Steel BZP

## TECHNISCHE DATEN

### MATERIAL

Stahl Verzinkt

## SPECIFICATION

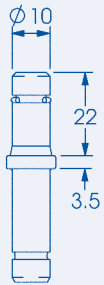
### MATIERES

Acier, plaqué de zinc

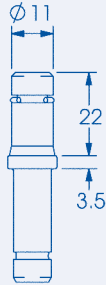
## ESPECIFICACION

### MATERIALES

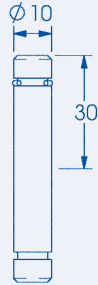
Acero chapado de zinc



No.1957P



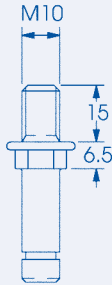
No.1954P



No.1950P



No.1966P



No.H552P

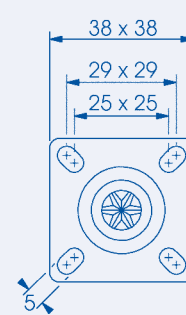


PLATE FIXING  
No.1959-9209

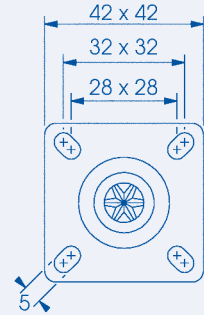


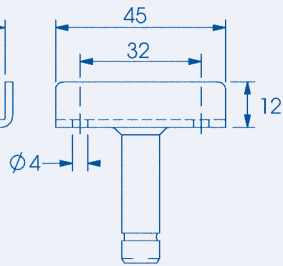
PLATE FIXING  
No.1959-9211



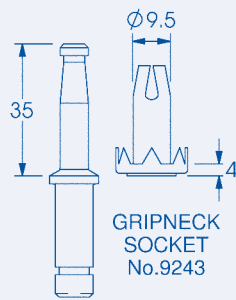
15mm "U" BRACKET  
No.9200-1958



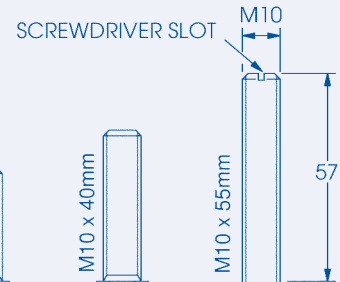
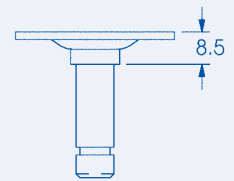
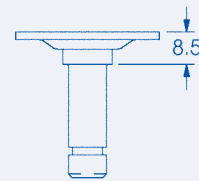
18mm "U" BRACKET  
No.9201-1958



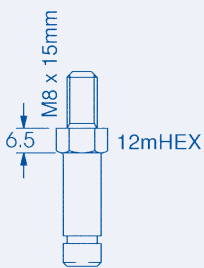
GRIPNECK  
SOCKET  
No.9243



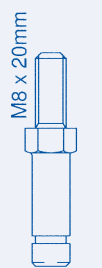
GRIPNECK STEM  
No.1990P



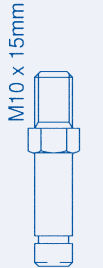
M10 x 55mm  
No.1855P



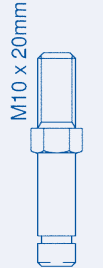
M8 x 15  
No.1946P



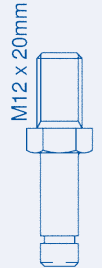
M8 x 20  
No.1947P



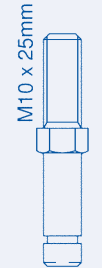
M10 x 15  
No.1955P



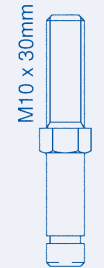
M10 x 20  
No.1962P



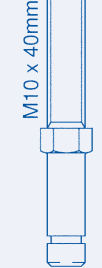
M12 x 20  
No.1983P



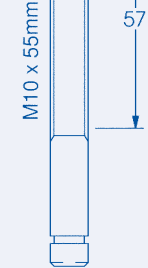
M10 x 25  
No.1963P



M10 x 30  
No.1945P



M10 x 40  
No.1968P



# GR5016 AND GR50FB SOCKETS

## SPECIFICATION

### MATERIALS

PA  
Steel BZP

### STANDARD COLOURS

Black

## TECHNISCHE DATEN

### MATERIAL

PA  
Stahl Verzinkt

### STANDARDFARBEN

Schwarz

## SPECIFICATION

### MATIERES

PA  
Acier, plaqué de zinc

### COLORIS STANDARD

Noir

## ESPECIFICACION

### MATERIALES

Nilón  
Acero, chapado de zinc

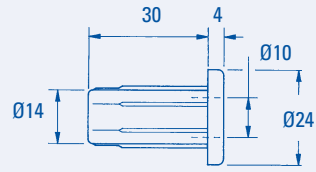
### COLORES ESTANDAR

Negro

## NO.

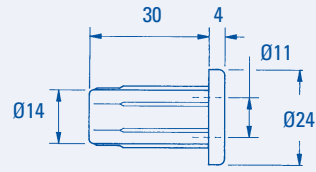
95301013

10mm socket 4mm head



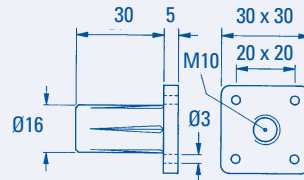
95301013-11

11mm socket with 4mm head



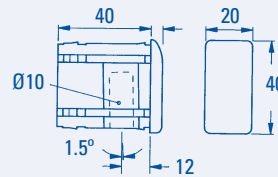
9541-1

Nylon socket tapped M10



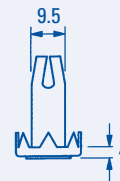
90341013

40 x 20 x 1.5 castor insert



9243

Gripneck Socket



# GR5016 CASTOR **FREEWHEELING FREILAUFEND NON FREINÉ SIN FRENO**

## SPECIFICATION

### CASTOR TYPE

Swivel

### MATERIALS

Castor PA  
Hard Wheel PA  
Soft Tyre PUR

### STANDARD COLOURS

Black

### STANDARDS

EN 12528

## TECHNISCHE DATEN

### ROLLEN TYP

Lenkrolle

### MATERIAL

Rollen PA  
Harte Räder PA  
Weiche Lauffläche PUR

### STANDARDFARBEN

Schwarz

### NORMEN

EN 12528

## SPECIFICATION

### TYPE DE ROULETTE

Pivotante

### MATIERES

Roulette PA  
Roue dure PA  
Bandes souples PUR

### COLORIS STANDARD

Noir

### NORMES

EN 12528

## ESPECIFICACION

### TIPO DE RUEDA

Giratoria

### MATERIALES

Rueda Nilón  
Rodadura dura nilón  
Rodadura blanda poliuretano

### COLORES ESTANDAR

Negro

### NORMAS

EN 12528



50



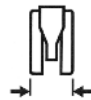
54



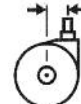
16



7-8



53



19



50



50kg

## NO.

8200-1  
8203-1  
8208-1  
8201-1  
8220-1  
8202-1  
8204-1  
8251-1



54



22

-----  
Ø 11 x 22mm

57

22

Ø 10 x 22mm

57

22

Ø 10 x 30mm

54

30

M8 x 15mm

60.5

15

M10 x 15mm

60.5

-

38 x 38mm Plate

62.5

-

42 x 42mm Plate

62.5

-

**BLACK - HARD WHEEL**



## NO.

8200-1-1U  
8203-1-1U  
8208-1-1U  
8201-1-1U  
8220-1-1U  
8202-1-1U  
8204-1-1U  
8251-1-1U

-----  
Ø 11 x 22mm

54

-

Ø 10 x 22mm

57

22

Ø 10 x 22mm

57

22

Ø 10 x 30mm

54

30

M8 x 15mm

60.5

15

M10 x 15mm

60.5

15

38 x 38mm Plate

62.5

-

42 x 42mm Plate

62.5

-

**BLACK - SOFT TYRE**



Ø 11 x 22mm



Ø 10 x 22mm



Ø 10 x 30mm



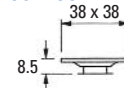
M8 x 15mm



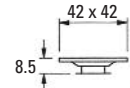
M10 x 15mm



38 x 38mm Plate



42 x 42mm Plate



# GR50FB CASTOR WHEELBRAKE RADFESTELLER BLOCAGE DE ROUE RUEDA CON FRENO

## SPECIFICATION

### CASTOR TYPE

Wheel Brake

### MATERIALS

Castor PA  
Hard Wheel PA  
Soft Tyre PUR

### STANDARD COLOURS

Black

### STANDARDS

EN 12528

## TECHNISCHE DATEN

### ROLLEN TYP

Radfesteller

### MATERIAL

Rollen PA  
Harte Räder PA  
Weiche Lauffläche PUR

### STANDARDFARBEN

Schwarz

### NORMEN

EN 12528

## SPECIFICATION

### TYPE DE ROULETTE

Blocage de Roue

### MATIERES

Roulette PA  
Roue dure PA  
Bandes souples PUR

### COLORIS STANDARD

Noir

### NORMES

EN 12528

## ESPECIFICACION

### TIPO DE RUEDA

Rueda con freno

### MATERIALES

Rueda Nilón  
Rodadura dura nilón  
Rodadura blanda poliuretano

### COLORES ESTANDAR

Negro

### NORMAS

EN 12528



50



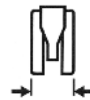
54



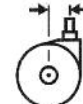
16



7-8



53



19



66



50kg

### NO.

6300-1  
6303-1  
6308-1  
6301-1  
6320-1  
6302-1  
6304-1  
6351-1



-----  
Ø 11 x 22mm  
Ø 10 x 22mm  
Ø 10 x 30mm  
M8 x 15mm  
M10 x 15mm  
38 x 38mm Plate  
42 x 42mm Plate



54  
57  
57  
54  
60.5  
60.5  
62.5  
62.5



-  
22  
22  
30  
15  
15  
-  
-

### BLACK - HARD WHEEL



50



54



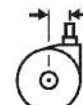
16



7-8



53



19



66



30kg

### NO.

6300-1-1U  
6303-1-1U  
6308-1-1U  
6301-1-1U  
6320-1-1U  
6302-1-1U  
6304-1-1U  
6351-1-1U

-----  
Ø 11 x 22mm  
Ø 10 x 22mm  
Ø 10 x 30mm  
M8 x 15mm  
M10 x 15mm  
38 x 38mm Plate  
42 x 42mm Plate

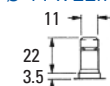
54  
57  
57  
54  
60.5  
60.5  
62.5  
62.5

-  
22  
22  
30  
15  
15  
-  
-

### BLACK - SOFT TYRE



Ø 11 x 22mm



Ø 10 x 22mm



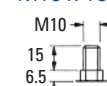
Ø 10 x 30mm



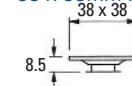
M8 x 15mm



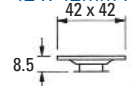
M10 x 15mm



38 x 38mm Plate



42 x 42mm Plate





# ADJUSTERS RIGID

## SPECIFICATION

### ADJUSTER TYPE

Rigid

### MATERIALS

Stem Steel BZP

Base PP

### STANDARD COLOURS

Black

### OPTIONAL

Slot or other top forms may be available, please enquire

## TECHNISCHE DATEN

### STELLFUSS TYP

Arretiert

### MATERIAL

Schraube Stahl Verzinkt

Teller PP

### STANDARDFARBEN

Schwarz

### OPTIONEN

Verschiedene Befestigungsmöglichkeiten vorhanden, Fragen Sie bitte an

## SPECIFICATION

### TYPE DE VERIN

Fixe

### MATIERES

Tige Acier, plaqué de zinc

Base PP

### COLORIS STANDARD

Noir

### OPTIONS

Fente tournevis ou autres possibilités sur certains modèles  
Merci de nous contacter

## ESPECIFICACION

### TIPO DE REGULADOR

Fijo

### MATERIALES

Vástago Acero, chapado de zinc

Base PP

### COLORES ESTANDAR

Negro

### OPCIONES

Ranura para destornillador o otras posibilidades con algunos modelos.  
Por favor, pide información



16



15

### NO.

5220-1-99  
5221-1-99  
5216-1-99  
5202-1-99  
5204-1-99  
5205-1-99  
5240-1-99  
5242-1-99



M6 x 15  
M6 x 25  
M8 x 15  
M8 x 25  
M8 x 37.5  
M8 x 50  
M8 x 80  
M8 x 100



25



100



100  
100  
100  
100  
100  
100  
100  
100

### NO.

5222-1-99  
5223-1-99  
5217-1-99  
5234-1-99  
5239-1-99  
5244-1-99  
5241-1-99  
5243-1-99

M6 x 15  
M6 x 25  
M8 x 15  
M8 x 25  
M8 x 37.5  
M8 x 50  
M8 x 80  
M8 x 100

+  
+  
+  
+  
+  
+

38  
38  
38  
38  
38  
38  
38  
38

100  
100  
100  
100  
100  
100  
100  
100



9



M10 x 30  
M10 x 40



30  
30



500  
500

### NO.

5209-1  
5210-1



## SPECIFICATION

### ADJUSTER TYPE

Rigid

### MATERIALS

Stem Steel BZP

Base PA

### STANDARD COLOURS

Black

### OPTIONAL

Slot or other top forms may be available, please enquire

## TECHNISCHE DATEN

### STELLFUSS TYP

Arretiert

### MATERIAL

Schraube Stahl Verzinkt

Teller PA

### STANDARDFARBEN

Schwarz

### OPTIONEN

Verschiedene Befestigungsmöglichkeiten vorhanden, Fragen Sie bitte an

## SPECIFICATION

### TYPE DE VERIN

Fixe

### MATIERES

Tige Acier, plaqué de zinc

Base PA

### COLORIS STANDARD

Noir

### OPTIONS

Fente tournevis ou autres possibilités sur certains modèles  
Merci de nous contacter

## ESPECIFICACION

### TIPO DE REGULADOR

Fijo

### MATERIALES

Vástago Acero, chapado de zinc

Base PA

### COLORES ESTANDAR

Negro

### OPCIONES

Ranura para destornillador o otras posibilidades con algunos modelos.  
Por favor, pide información



10.5



### NO.

5249-1

M8 x 25

30

250

5252-1

M8 x 40

30

250

5275-1

M10 x 25

30

250

5278-1

M10 x 40

30

250

### NO.

5250-1

M8 x 25

40

250

5253-1

M8 x 40

40

250

5276-1

M10 x 25

40

250

5279-1

M10 x 40

40

250

### NO.

5251-1

M8 x 25

50

250

5254-1

M8 x 40

50

250

5277-1

M10 x 25

50

250

5280-1

M10 x 40

50

250



# ADJUSTERS RIGID

## SPECIFICATION

### ADJUSTER TYPE

Rigid

### MATERIALS

Stem Steel BZP

Base PP

### STANDARD COLOURS

Black

### OPTIONAL

Slot or other top forms may be available, please enquire

## TECHNISCHE DATEN

### STELLFUSS TYP

Arretiert

### MATERIAL

Schraube Stahl Verzinkt

Teller PP

### STANDARDFARBEN

Schwarz

### OPTIONEN

Verschiedene Befestigungsmöglichkeiten vorhanden, Fragen Sie bitte an

## SPECIFICATION

### TYPE DE VERIN

Fixe

### MATIERES

Tige Acier, plaqué de zinc

Base PP

### COLORIS STANDARD

Noir

### OPTIONS

Fente tournevis ou autres possibilités sur certains modèles  
Merci de nous contacter

## ESPECIFICACION

### TIPO DE REGULADOR

Fijo

### MATERIALES

Vástago Acero, chapado de zinc

Base PP

### COLORES ESTANDAR

Negro

### OPCIONES

Ranura para destornillador o otras posibilidades con algunos modelos.  
Por favor, pide información



12



### NO.

5263-1

M8 x 15

22

250

5264-1

M8 x 22

22

250

5265-1

M8 x 37.5

22

250



### NO.

5260-1

M8 x 15

30

250

5261-1

M8 x 22

30

250

5262-1

M8 x 37.5

30

250



## SPECIFICATION

### ADJUSTER TYPE

Non Tilt

### MATERIALS

Stem Steel BZP

Base PA

### STANDARD COLOURS

Black

### OPTIONAL

Slot or other top forms may be available, please enquire

## TECHNISCHE DATEN

### STELLFUSS TYP

Drehbar

### MATERIAL

Schraube Stahl Verzinkt

Teller PA

### STANDARDFARBEN

Schwarz

### OPTIONEN

Verschiedene Befestigungsmöglichkeiten vorhanden, Fragen Sie bitte an

## SPECIFICATION

### TYPE DE VERIN

Tournable

### MATIERES

Tige Acier, plaqué de zinc

Base PA

### COLORIS STANDARD

Noir

### OPTIONS

Fente tournevis ou autres possibilités sur certains modèles  
Merci de nous contacter

## ESPECIFICACION

### TIPO DE REGULADOR

Girando

### MATERIALES

Vástago Acero, chapado de zinc

Base Nilón

### COLORES ESTANDAR

Negro

### OPCIONES

Ranura para destornillador o otras posibilidades con algunos modelos.  
Por favor, pide información



19



12



+



### NO.

4403N-30-1

M10 x 35

30

1000

4404N-30-1

M10 x 45

30

1000

4408N-30-1

M10 x 70

30

750

### NO.

4403N-40-1

M10 x 35

40

1000

4404N-40-1

M10 x 45

40

1000

4408N-40-1

M10 x 70

40

750

### NO.

4403N-50-1

M10 x 35

50

1000

4404N-50-1

M10 x 45

50

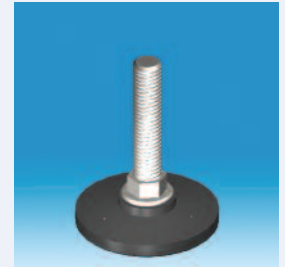
1000

4408N-50-1

M10 x 70

50

750



22



12



+



### NO.

4403N-45-1

M10 x 35

45

1000

4404N-45-1

M10 x 45

45

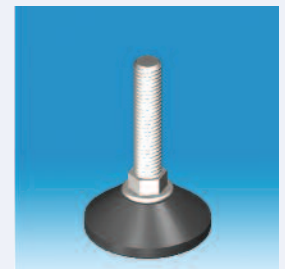
1000

4408N-45-1

M10 x 70

45

750



# ADJUSTERS NON - TILT

## SPECIFICATION

### ADJUSTER TYPE

Non Tilt

### MATERIALS

Stem Steel BZP

Base PA

### STANDARD COLOURS

Black

### OPTIONAL

Slot or other top forms may be available, please enquire

## TECHNISCHE DATEN

### STELLFUSS TYP

Drehbar

### MATERIAL

Schraube Stahl Verzinkt

Teller PA

### STANDARDFARBEN

Schwarz

### OPTIONEN

Verschiedene

Befestigungsmöglichkeiten vorhanden, Fragen Sie bitte an

## SPECIFICATION

### TYPE DE VERIN

Tournable

### MATIERES

Tige Acier, plaqué de zinc

Base PA

### COLORIS STANDARD

Noir

### OPTIONS

Fente tournevis ou autres possibilités sur certains modèles  
Merci de nous contacter

## ESPECIFICACION

### TIPO DE REGULADOR

Girando

### MATERIALES

Vástago Acero, chapado de zinc

Base Nilón

### COLORES ESTANDAR

Negro

### OPCIONES

Ranura para destornillador o otras posibilidades con algunos modelos.  
Por favor, pide información



15



12



10



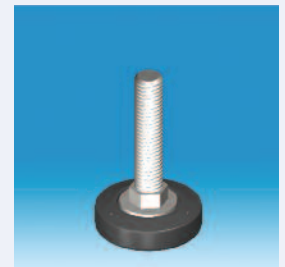
### NO.

5329-1	M8 x 25	25	500
5323-1	M8 x 35	25	500
5347-1	M8 x 45	25	500
5361-1	M8 x 70	25	500
5368-1	M10 x 25	25	500
5313-1	M10 x 35	25	500
5318-1	M10 x 45	25	500
5353-1	M10 x 70	25	500
5343-1	M10 x 100	25	500
5309-1	M12 x 25	25	500
5312-1	M12 x 45	25	500
5379-1	M12 x 65	25	500
5384-1	M12 x 100	25	500



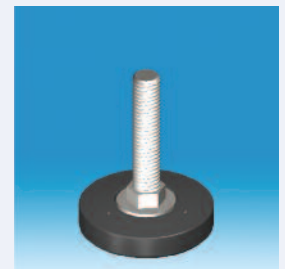
### NO.

5333-1	M8 x 25	37.5	500
5324-1	M8 x 35	37.5	500
5348-1	M8 x 45	37.5	500
5358-1	M8 x 70	37.5	500
5369-1	M10 x 25	37.5	750
5320-1	M10 x 35	37.5	750
5322-1	M10 x 45	37.5	750
5354-1	M10 x 70	37.5	750
5344-1	M10 x 100	37.5	750
5314-1	M12 x 25	37.5	750
5302-1	M12 x 45	37.5	750
5380-1	M12 x 65	37.5	750
5385-1	M12 x 100	37.5	750



### NO.

5336-1	M8 x 25	47.5	500
5341-1	M8 x 35	47.5	500
5349-1	M8 x 45	47.5	500
5351-1	M8 x 70	47.5	500
5370-1	M10 x 25	47.5	1000
5325-1	M10 x 35	47.5	1000
5327-1	M10 x 45	47.5	1000
5355-1	M10 x 70	47.5	750
5345-1	M10 x 100	47.5	750
5316-1	M12 x 25	47.5	2000
5304-1	M12 x 45	47.5	2000
5383-1	M12 x 65	47.5	2000
5386-1	M12 x 100	47.5	1000



## SPECIFICATION

### ADJUSTER TYPE

Non Tilt

### MATERIALS

Stem Steel BZP

Base PA

### STANDARD COLOURS

Black

### OPTIONAL

Slot or other top forms may be available, please enquire

## TECHNISCHE DATEN

### STELLFUSS TYP

Drehbar

### MATERIAL

Schraube Stahl Verzinkt

Teller PA

### STANDARDFARBEN

Schwarz

### OPTIONEN

Verschiedene Befestigungsmöglichkeiten vorhanden, Fragen Sie bitte an

## SPECIFICATION

### TYPE DE VERIN

Tournable

### MATIERES

Tige Acier, plaqué de zinc

Base PA

### COLORIS STANDARD

Noir

### OPTIONS

Fente tournevis ou autres possibilités sur certains modèles  
Merci de nous contacter

## ESPECIFICACION

### TIPO DE REGULADOR

Girando

### MATERIALES

Vástago Acero, chapado de zinc

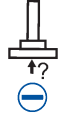
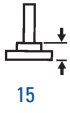
Base Nilón

### COLORES ESTANDAR

Negro

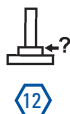
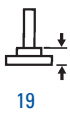
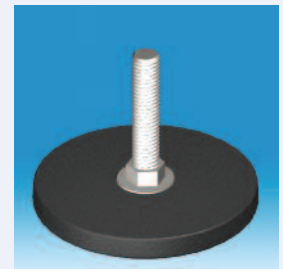
### OPCIONES

Ranura para destornillador o otras posibilidades con algunos modelos.  
Por favor, pide información



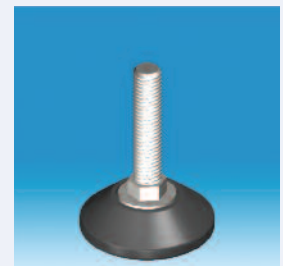
### NO.

5303-1	M10 x 25	80	1000
5300-1	M10 x 35	80	1000
5306-1	M10 x 45	80	1000
5307-1	M10 x 70	80	750
5321-1	M10 x 100	80	750
5319-1	M12 x 25	80	2000
5330-1	M12 x 45	80	2000
5331-1	M12 x 65	80	2000
5332-1	M12 x 100	80	1000



### NO.

5340-1	M8 x 25	47.5	500
5342-1	M8 x 35	47.5	500
5350-1	M8 x 45	47.5	500
5352-1	M8 x 70	47.5	500
5371-1	M10 x 25	47.5	750
5305-1	M10 x 35	47.5	750
5308-1	M10 x 45	47.5	750
5356-1	M10 x 70	47.5	750
5346-1	M10 x 100	47.5	750
5317-1	M12 x 25	47.5	750
5310-1	M12 x 45	47.5	750
5382-1	M12 x 65	47.5	750
5387-1	M12 x 100	47.5	750





# ADJUSTERS TILT

## SPECIFICATION

### ADJUSTER TYPE

Tilt

### MATERIALS

Stem Steel BZP

Base PE

### STANDARD COLOURS

Black

### OPTIONAL

Slot or other top forms may be available, please enquire

## TECHNISCHE DATEN

### STELLFUSS TYP

Gelenkteller

### MATERIAL

Schraube Stahl Verzinkt

Teller PE

### STANDARDFARBEN

Schwarz

### OPTIONEN

Verschiedene Befestigungsmöglichkeiten vorhanden, Fragen Sie bitte an

## SPECIFICATION

### TYPE DE VERIN

Orientable

### MATIERES

Tige Acier, plaqué de zinc

Base PE

### COLORIS STANDARD

Noir

### OPTIONS

Fente tournevis ou autres possibilités sur certains modèles. Merci de nous contacter

## ESPECIFICACION

### TIPO DE REGULADOR

Orientable

### MATERIALES

Vástago Acero, chapado de zinc

Base PE

### COLORES ESTANDAR

Negro

### OPCIONES

Ranura para destornillador o otras posibilidades con algunos modelos. Por favor, pide información



20



12

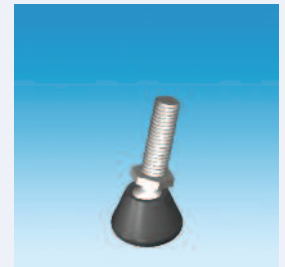


20°



### NO.

5008-25-1	M6 x 12.5	25	50
5009-25-1	M6 x 25	25	50
5010-25-1	M8 x 12.5	25	50
5011-25-1	M8 x 25	25	50
5012-25-1	M8 x 37.5	25	50
5031-25-1	M8 x 50	25	50
5028-25-1	M8 x 60	25	50
5030-25-1	M8 x 75	25	50
5029-25-1	M8 x 100	25	50
5013-25-1	M10 x 15	25	50
5032-25-1	M10 x 25	25	50
5014-25-1	M10 x 37.5	25	50
5015-25-1	M10 x 50	25	50
5038-25-1	M10 x 75	25	50
5017-25-1	M10 x 100	25	50
5019-25-1	M12 x 50	25	50
5023-25-1	M12 x 75	25	50
5021-25-1	M12 x 100	25	50



### NO.

5008-32-1	M6 x 12.5	32.5	75
5009-32-1	M6 x 25	32.5	75
5010-32-1	M8 x 12.5	32.5	75
5011-32-1	M8 x 25	32.5	75
5012-32-1	M8 x 37.5	32.5	75
5031-32-1	M8 x 50	32.5	75
5028-32-1	M8 x 60	32.5	75
5030-32-1	M8 x 75	32.5	75
5029-32-1	M8 x 100	32.5	75
5013-32-1	M10 x 15	32.5	75
5032-32-1	M10 x 25	32.5	75
5014-32-1	M10 x 37.5	32.5	75
5015-32-1	M10 x 50	32.5	75
5038-32-1	M10 x 75	32.5	75
5017-32-1	M10 x 100	32.5	75
5019-32-1	M12 x 50	32.5	75
5023-32-1	M12 x 75	32.5	75
5021-32-1	M12 x 100	32.5	75



## SPECIFICATION

### ADJUSTER TYPE

Tilt

### MATERIALS

Stem Steel BZP

Base PE

### STANDARD COLOURS

Black

### OPTIONAL

Slot or other top forms may be available, please enquire

## TECHNISCHE DATEN

### STELLFUSS TYP

Gelenkteller

### MATERIAL

Schraube Stahl Verzinkt

Teller PE

### STANDARDFARBEN

Schwarz

### OPTIONEN

Verschiedene Befestigungsmöglichkeiten vorhanden, Fragen Sie bitte an

## SPECIFICATION

### TYPE DE VERIN

Orientable

### MATIERES

Tige Acier, plaqué de zinc

Base PE

### COLORIS STANDARD

Noir

### OPTIONS

Fente tournevis ou autres possibilités sur certains modèles  
Merci de nous contacter

## ESPECIFICACION

### TIPO DE REGULADOR

Orientable

### MATERIALES

Vástago Acero, chapado de zinc

Base PE

### COLORES ESTANDAR

Negro

### OPCIONES

Ranura para destornillador o otras posibilidades con algunos modelos.  
Por favor, pide información



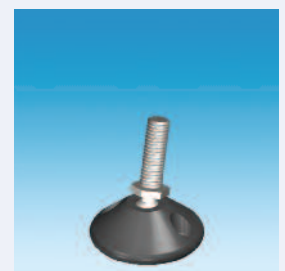
### NO.

5008-40-1	M6 x 12.5	40	100
5009-40-1	M6 x 25	40	100
5010-40-1	M8 x 12.5	40	100
5011-40-1	M8 x 25	40	100
5012-40-1	M8 x 37.5	40	100
5031-40-1	M8 x 50	40	100
5028-40-1	M8 x 60	40	100
5030-40-1	M8 x 75	40	100
5029-40-1	M8 x 100	40	100
5013-40-1	M10 x 15	40	100
5032-40-1	M10 x 25	40	100
5014-40-1	M10 x 37.5	40	100
5015-40-1	M10 x 50	40	100
5038-40-1	M10 x 75	40	100
5017-40-1	M10 x 100	40	100
5019-40-1	M12 x 50	40	100
5023-40-1	M12 x 75	40	100
5021-40-1	M12 x 100	40	100



### NO.

5008-40-1-3	M6 x 12.5	40	100
5009-40-1-3	M6 x 25	40	100
5010-40-1-3	M8 x 12.5	40	100
5011-40-1-3	M8 x 25	40	100
5012-40-1-3	M8 x 37.5	40	100
5031-40-1-3	M8 x 50	40	100
5028-40-1-3	M8 x 60	40	100
5030-40-1-3	M8 x 75	40	100
5029-40-1-3	M8 x 100	40	100
5013-40-1-3	M10 x 15	40	100
5032-40-1-3	M10 x 25	40	100
5014-40-1-3	M10 x 37.5	40	100
5015-40-1-3	M10 x 50	40	100
5038-40-1-3	M10 x 75	40	100
5017-40-1-3	M10 x 100	40	100
5019-40-1-3	M12 x 50	40	100
5023-40-1-3	M12 x 75	40	100
5021-40-1-3	M12 x 100	40	100



With 2 fixing holes Ø 4.5mm  
Mit 2 Bohrlöchern Ø 4.5mm  
Avec 2 trous de fixation Ø 4.5mm  
Con 2 agujeros para fijación Ø 4.5mm

# ADJUSTERS TILT

## SPECIFICATION

### ADJUSTER TYPE

Tilt

### MATERIALS

Stem Steel BZP

Base PP

### STANDARD COLOURS

Black

### OPTIONAL

Slot or other top forms may be available, please enquire

## TECHNISCHE DATEN

### STELFUSS TYP

Gelenkteller

### MATERIAL

Schraube Stahl Verzinkt

Teller PP

### STANDARDFARBEN

Schwarz

### OPTIONEN

Verschiedene Befestigungsmöglichkeiten vorhanden, Fragen Sie bitte an

## SPECIFICATION

### TYPE DE VERIN

Orientable

### MATIERES

Tige Acier, plaqué de zinc

Base PP

### COLORIS STANDARD

Noir

### OPTIONS

Fente tournevis ou autres possibilités sur certains modèles  
Merci de nous contacter

## ESPECIFICACION

### TIPO DE REGULADOR

Orientable

### MATERIALES

Vástago Acero, chapado de zinc

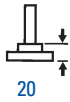
Base PP

### COLORES ESTANDAR

Negro

### OPCIONES

Ranura para destornillador o otras posibilidades con algunos modelos.  
Por favor, pide información



20



12



20°



### NO.

5008-47-1	M6 x 12.5	47.5	100
5009-47-1	M6 x 25	47.5	100
5010-47-1	M8 x 12.5	47.5	100
5011-47-1	M8 x 25	47.5	100
5012-47-1	M8 x 37.5	47.5	100
5031-47-1	M8 x 50	47.5	100
5028-47-1	M8 x 60	47.5	100
5030-47-1	M8 x 75	47.5	100
5029-47-1	M8 x 100	47.5	100
5013-47-1	M10 x 15	47.5	250
5032-47-1	M10 x 25	47.5	250
5014-47-1	M10 x 37.5	47.5	250
5015-47-1	M10 x 50	47.5	250
5038-47-1	M10 x 75	47.5	250
5017-47-1	M10 x 100	47.5	250
5019-47-1	M12 x 50	47.5	250
5023-47-1	M12 x 75	47.5	250
5021-47-1	M12 x 100	47.5	250



### NO.

5008-55-1	M6 x 12.5	55	100
5009-55-1	M6 x 25	55	100
5010-55-1	M8 x 12.5	55	100
5011-55-1	M8 x 25	55	100
5012-55-1	M8 x 37.5	55	100
5031-55-1	M8 x 50	55	100
5028-55-1	M8 x 60	55	100
5030-55-1	M8 x 75	55	100
5029-55-1	M8 x 100	55	100
5013-55-1	M10 x 15	55	250
5032-55-1	M10 x 25	55	250
5014-55-1	M10 x 37.5	55	250
5015-55-1	M10 x 50	55	250
5038-55-1	M10 x 75	55	250
5017-55-1	M10 x 100	55	250
5019-55-1	M12 x 50	55	250
5023-55-1	M12 x 75	55	250
5021-55-1	M12 x 100	55	250



# ADJUSTERS TILT

## SPECIFICATION

### ADJUSTER TYPE

Tilt

### MATERIALS

Stem Steel BZP

Base PA

### STANDARD COLOURS

Black

## TECHNISCHE DATEN

### STELLFUSS TYP

Gelenkteller

### MATERIAL

Schraube Stahl Verzinkt

Teller PA

### STANDARDFARBEN

Schwarz

## SPECIFICATION

### TYPE DE VERIN

Orientable

### MATIERES

Tige Acier, plaqué de zinc

Base PA

### COLORIS STANDARD

Noir

## ESPECIFICACION

### TIPO DE REGULADOR

Orientable

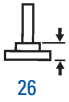
### MATERIALES

Vástago Acero, chapado de zinc

Base PA

### COLORES ESTANDAR

Negro



26



12



25°



### NO.

5010-74-1	M8 x 12.5	74	150
5011-74-1	M8 x 25	74	150
5012-74-1	M8 x 37.5	74	150
5031-74-1	M8 x 50	74	150
5028-74-1	M8 x 60	74	150
5030-74-1	M8 x 75	74	150
5029-74-1	M8 x 100	74	150
5013-74-1	M10 x 15	74	150
5032-74-1	M10 x 25	74	150
5014-74-1	M10 x 37.5	74	150
5015-74-1	M10 x 50	74	150
5038-74-1	M10 x 75	74	150
5017-74-1	M10 x 100	74	150
5019-74-1	M12 x 50	74	150
5023-74-1	M12 x 75	74	150
5021-74-1	M12 x 100	74	150



# ADJUSTERS TILT - NO HEXAGON

## SPECIFICATION

### ADJUSTER TYPE

Tilt

### MATERIALS

Stem Steel BZP

Base PE

### STANDARD COLOURS

Black

## TECHNISCHE DATEN

### STELLFUSS TYP

Gelenkteller

### MATERIAL

Schraube Stahl Verzinkt

Teller PE

### STANDARDFARBEN

Schwarz

## SPECIFICATION

### TYPE DE VERIN

Orientable

### MATIERES

Tige Acier, plaqué de zinc

Base PE

### COLORIS STANDARD

Noir

## ESPECIFICACION

### TIPO DE REGULADOR

Orientable

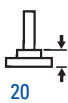
### MATERIALES

Vástago Acero, chapado de zinc

Base PE

### COLORES ESTANDAR

Negro



20



20°



### NO.

5025-25-1	M8 x 37.5	25	50
5027-25-1	M8 x 70	25	50

### NO.

5025-32-1	M8 x 37.5	32.5	75
5027-32-1	M8 x 70	32.5	75



# ADJUSTERS TILT - NO HEXAGON

## SPECIFICATION

### ADJUSTER TYPE

Tilt

### MATERIALS

See Below

### STANDARD COLOURS

Black

### OPTIONAL

Slot or other top forms may be available, please enquire

## TECHNISCHE DATEN

### STELLFUSS TYP

Gelenkteller

### MATERIAL

Siehe Unten

### STANDARDFARBEN

Schwarz

### OPTIONEN

Verschiedene Befestigungsmöglichkeiten vorhanden, Fragen Sie bitte an

## SPECIFICATION

### TYPE DE VERIN

Orientable

### MATIERES

Voir ci-dessous

### COLORIS STANDARD

Noir

### OPTIONS

Fente tournevis ou autres possibilités sur certains modèles  
Merci de nous contacter

## ESPECIFICACION

### TIPO DE REGULADOR

Orientable

### MATERIALES

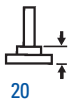
Ver abajo

### COLORES ESTANDAR

Negro

### OPCIONES

Ranura para destornillador o otras posibilidades con algunos modelos.  
Por favor, pide información



20



20°

### NO.

5025-40-1  
5027-40-1



M8 x 37.5  
M8 x 70



40  
40



100  
100



PE  
PE



### NO.

5025-40-1-3  
5027-40-1-3

M8 x 37.5  
M8 x 70

40  
40

100  
100

PE  
PE



### Note 1.

With 2 fixing holes  $\varnothing$  4.5mm  
Mit 2 Bohrlöchern  $\varnothing$  4.5mm  
Avec 2 trous de fixation  $\varnothing$  4.5mm  
Con 2 agujeros para fijación  $\varnothing$  4.5mm

### NO.

5025-47-1  
5027-47-1

M8 x 37.5  
M8 x 70

47.5  
47.5

100  
100

PP  
PP



### NO.

5025-55-1  
5027-55-1

M8 x 37.5  
M8 x 70

55  
55

100  
100

PP  
PP



# ADJUSTERS TILT HEAVY DUTY

## SPECIFICATION

### ADJUSTER TYPE

Tilt

### MATERIALS

Stem Steel BZP

Base PA -GF

### STANDARD COLOURS

Black

## TECHNISCHE DATEN

### STELLFUSS TYP

Gelenkteller

### MATERIAL

Schraube Stahl Verzinkt

Teller PA -GF

### STANDARDFARBEN

Schwarz

## SPECIFICATION

### TYPE DE VERIN

Orientable

### MATIERES

Tige Acier, plaqué de zinc

Base PA -GF

### COLORIS STANDARD

Noir

## ESPECIFICACION

### TIPO DE REGULADOR

Orientable

### MATERIALES

Vástago Acero, chapado de zinc

Base PA -GF

### COLORES ESTANDAR

Negro



36



15



20°



### NO.

4905-100-1

4901-100-1

4902-100-1

M10 x 100

M12 x 100

M16 x 100

100

100

100

750

750

1000

### BLANKING PLUG

### NO.

24321011

### ABDECK STOPFEN

13 x 1 LIGHT RI

### EMBOUT

### TAPON

### NUTS

### NO.

9242

9255

9256

### MUTTER

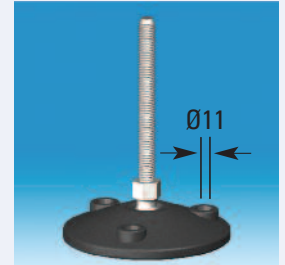
M10 NUT BZP

M12 NUT BZP

M16 NUT BZP

### ECROUS

### TUERCAS



# ADJUSTERS TILT HEAVY DUTY - SOFT FOOT

## SPECIFICATION

### ADJUSTER TYPE

Tilt

### MATERIALS

Stem Steel BZP

Base PA -GF

Soft Foot TPE

### STANDARD COLOURS

Black

## TECHNISCHE DATEN

### STELLFUSS TYP

Gelenkteller

### MATERIAL

Schraube Stahl Verzinkt

Teller PA -GF

Weicher Fuss TPE

### STANDARDFARBEN

Schwarz

## SPECIFICATION

### TYPE DE VERIN

Orientable

### MATIERES

Tige Acier, plaqué de zinc

Base PA -GF

Dessous souple TPE

### COLORIS STANDARD

Noir

## ESPECIFICACION

### TIPO DE REGULADOR

Orientable

### MATERIALES

Vástago Acero, chapado de zinc

Base PA -GF

Pata blanda TPE

### COLORES ESTANDAR

Negro



38



15



20°



### NO.

4905-100T-1

4901-100T-1

4902-100T-1

M10 x 100 Soft Foot Pad

M12 x 100 Soft Foot Pad

M16 x 100 Soft Foot Pad

100

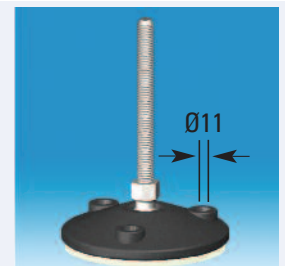
100

100

750

750

1000





# ADJUSTER BRACKETS

**SPECIFICATION MATERIALS**

Steel BZP

**TECHNISCHE DATEN MATERIAL**

Stahl Verzinkt

**SPECIFICATION MATIERES**

Acier, plaqué de zinc

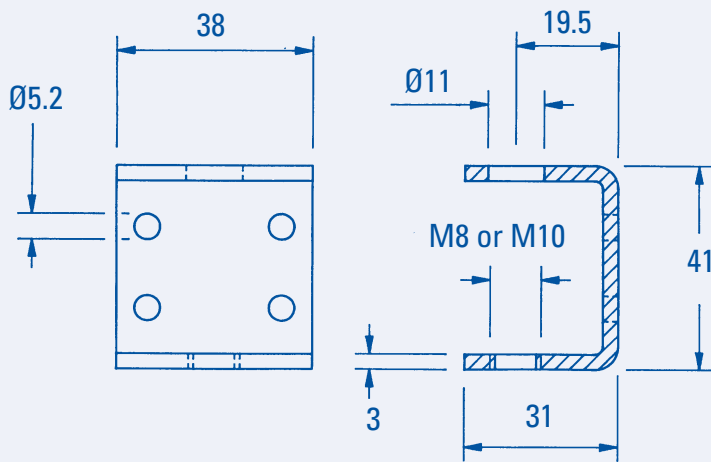
**ESPECIFICACION MATERIALES**

Acero, chapado de zinc

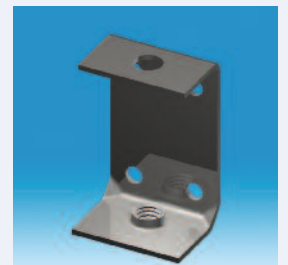
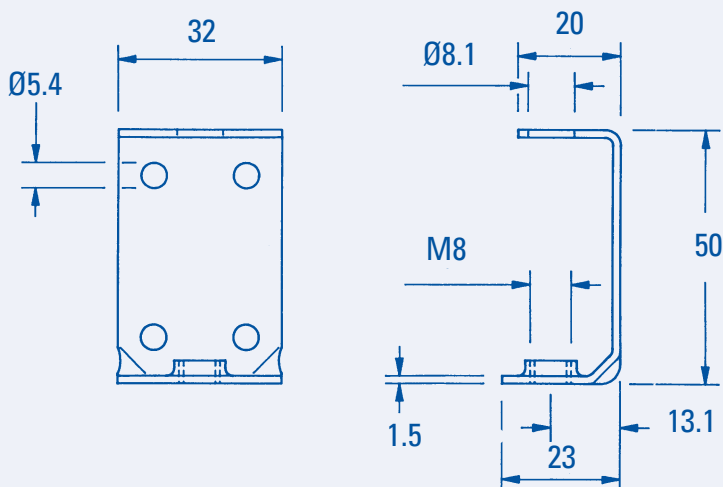
**NO.**

9212 M8 HEAVY DUTY ADJUSTER BRACKET 3mm THICK BZP

9213 M10 HEAVY DUTY ADJUSTER BRACKET 3mm THICK BZP



9214 M8 STANDARD ADJUSTER BRACKET 1.5 THICK BZP



## HANDWHEELS - MALE

### SPECIFICATION

#### MATERIALS

PP

#### STANDARD COLOURS

Black

### TECHNISCHE DATEN

#### MATERIAL

PP

#### STANDARDFARBEN

Schwarz

### SPECIFICATION

#### MATIERES

PP

#### COLORIS STANDARD

Noir

### ESPECIFICACION

#### MATERIALES

PP

#### COLORES ESTANDAR

Negro

#### NO.

3550-1

3551-1

3558-1

3559-1

3560-1

3562-1

#### a x b

M6 x 15

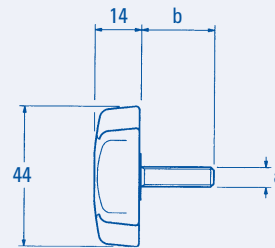
M6 x 22

M8 x 15

M8 x 22

M8 x 37.5

M8 x 50



#### NO.

3565-1

3566-1

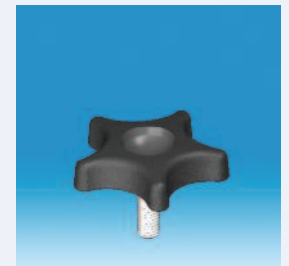
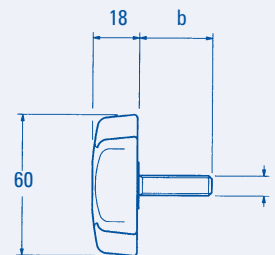
3567-1

#### a x b

M8 x 15

M8 x 22

M8 x 37.5



## WIRE MANAGEMENT

### SPECIFICATION

#### MATERIALS

ABS

#### STANDARD COLOURS

Black

### TECHNISCHE DATEN

#### MATERIAL

ABS

#### STANDARDFARBEN

Schwarz

### SPECIFICATION

#### MATIERES

ABS

#### COLORIS STANDARD

Noir

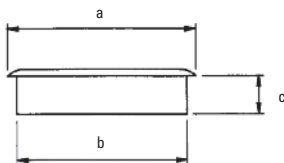
### ESPECIFICACION

#### MATERIALES

ABS

#### COLORES ESTANDAR

Negro



#### NO.

37011011

76mm Desk Tidy 2PT

a

76

b

65

c

16



37021011

95mm Desk Tidy 2PT

a

95

b

80

c

18





# THREADED TUBE INSERTS

## SPECIFICATION MATERIALS

Steel BZP

## TECHNISCHE DATEN MATERIAL

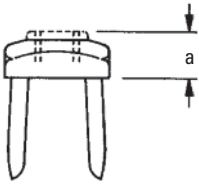
Stahl Verzinkt

## SPECIFICATION MATIERES

Acier, plaqué de zinc

## ESPECIFICACION MATERIALES

Acero, chapado de zinc



### METAL ROUND

NO.	Ins x Gauge	mm	Thread	a	Load (kg)
3026-BZP-ABM10	1 x 18	25 x 1 25 x 1.25 25.4 x 1.25	M10	10	350
3028-BZP-ABM10	1 x 16	25 x 1.5 25.4 x 1.5	M10	10.5	500
3034-BZP-ABM10	1 1/8 x 16	28.6 x 1.5	M10	10.5	350
3036-BZP-ABM10	1 1/4 x 18	32 x 1.5	M10	12.75	350
3038-BZP-ABM10	1 1/4 x 16	32 x 2	M10	13	350
3044-BZP-ABM10	1 1/2 x 18	38 x 1.5	M10	13.5	350
3046-BZP-ABM10	1 1/2 x 16	38 x 1.75	M10	13.25	350

### METAL SQUARE

NO.	Ins x Gauge	mm	Thread	a	Load (kg)
3072-BZP-T	1 x 1 x 18	25 x 25 x 1 25.4 x 25.4 x 1.25	M8	8.5	200
3074-BZP-T	1 x 1 x 16	25 x 25 x 1.5 25.4 x 25.4 x 1.5	M8	10	300
3072-BZP- ABM10	1 x 1 x 18	25 x 25 x 1 25.4 x 25.4 x 1.25	M10	11	350
3074-BZP- ABM10	1 x 1 x 16	25 x 25 x 1.5 25.4 x 25.4 x 1.5	M10	12.5	500



# STEEL TUBE ENDS

## SPECIFICATION

### MATERIALS

Steel BZP

## TECHNISCHE DATEN

### MATERIAL

Stahl Verzinkt

## SPECIFICATION

### MATIERES

Acier, plaqué de zinc

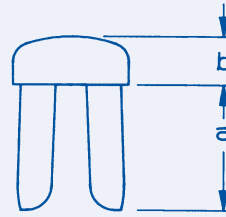
## ESPECIFICACION

### MATERIALES

Acero, chapado de zinc

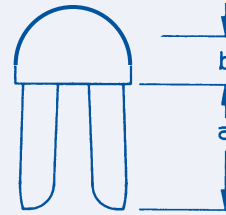
## ROUND

NO.	Ins x Gauge	mm	a	b
3010-BZP	3/4 x 18	19 x 1.25	21	7
3012-BZP	3/4 x 16	19 x 1.5	21	8
3051-BZP	3/4 x 14	19 x 2	22	8
3018-BZP	7/8 x 18	22 x 1.25	21	8
3020-BZP	7/8 x 16	22 x 1.5	21	9
3052-BZP		22 x 2	21	8
3026-BZP	1 x 18	25 x 1	21	9
		25 x 1.25		
		25.4 x 1.25		
3028-BZP	1 x 16	25 x 1.5	21	10
		25.4 x 1.5		
3053-BZP		25 x 2		
3034-BZP	1 1/8 x 16	28.6 x 1.5	27	11
3036-BZP	1 1/4 x 18	32 x 1.5	31	11
3038-BZP	1 1/4 x 16	32 x 2	31	12
3044-BZP	1 1/2 x 18	38 x 1.5	31	11
3046-BZP	1 1/2 x 16	38 x 1.75	31	12



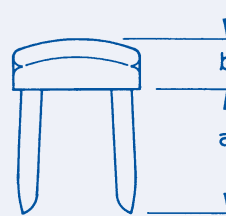
## DOMED HEAD ROUND

NO.	Ins x Gauge	mm	a	b
3051-D-BZP	3/4 x 14	19 x 2	20	13



## SQUARE ROUND

NO.	Ins x Ins X Gauge	mm	a	b
3064-BZP	3/4 x 3/4 x 18	19 x 19 x 1.25	19	8
3066-BZP	3/4 x 3/4 x 16	19 x 19 x 1.5	18	8
3070-BZP	7/8 x 7/8 x 16	22 x 22 x 1.5	18	8
3072-BZP	1 x 1 x 18	25 x 25 x 1	14	10
		25.4 x 25.4 x 1.5		
3074-BZP	1 x 1 x 16	25 x 25 x 1.5	13	11
		25.4 x 25.4 x 1.5		



# TUBE END TILT GLIDES

## SPECIFICATION

Tilt 20°

### MATERIALS

Steel BZP

Base Ø 25,32.5 & 40 PE

Base Ø 47.5 & 55 PP

### STANDARD COLOURS

Black

## TECHNISCHE DATEN

Gelenk 20°

### MATERIAL

Stahl Verzinkt

Teller Ø 25,32.5 & 40 PE

Teller Ø 47.5 & 55 PP

### STANDARDFARBEN

Schwarz

## SPECIFICATION

Orientable 20°

### MATIERES

Acier, plaqué de zinc

Base Ø 25,32.5 & 40 PE

Base Ø 47.5 & 55 PP

### COLORIS STANDARD

Noir

## ESPECIFICACION

Orientable 20°

### MATERIALES

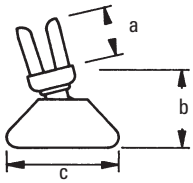
Acero, chapado de zinc

Base Ø 25,32.5 & 40 PE

Base Ø 47.5 & 55 PP

### COLORES ESTANDAR

Negro



NO.	Ins. x Gauge	mm	a	b	c	
4003Z-25-1	3/4 x 18	19 x 1.25	21	26	25	50
4003Z-32-1	3/4 x 18	19 x 1.25	21	26	32.5	75
4003Z-40-1	3/4 x 18	19 x 1.25	21	28	40	100
4003Z-47-1	3/4 x 18	19 x 1.25	21	28	47.5	100
4003Z-55-1	3/4 x 18	19 x 1.25	21	28	55	100
4004Z-25-1	3/4 x 16	19 x 1.5	20.5	26	25	50
4004Z-32-1	3/4 x 16	19 x 1.5	20.5	26	32.5	75
4004Z-40-1	3/4 x 16	19 x 1.5	20.5	28	40	100
4004Z-47-1	3/4 x 16	19 x 1.5	20.5	28	47.5	100
4004Z-55-1	3/4 x 16	19 x 1.5	20.5	28	55	100
4005Z-32-1	7/8 x 18	22 x 1.25	21	26	32.5	75
4005Z-40-1	7/8 x 18	22 x 1.25	21	28	40	100
4005Z-47-1	7/8 x 18	22 x 1.25	21	28	47.5	100
4005Z-55-1	7/8 x 18	22 x 1.25	21	28	55	100
4006Z-32-1	7/8 x 16	22 x 1.5	21	26	32.5	75
4006Z-40-1	7/8 x 16	22 x 1.5	21	28	40	100
4006Z-47-1	7/8 x 16	22 x 1.5	21	28	47.5	100
4006Z-55-1	7/8 x 16	22 x 1.5	21	28	55	100



C = Ø25



C = Ø32.5



C = Ø40



C = Ø47.5



C = Ø55





# ROUND INSERTS

## SPECIFICATION

### MATERIALS

PE

### STANDARD COLOURS

Black

## TECHNISCHE DATEN

### MATERIAL

PE

### STANDARDFARBEN

Schwarz

## SPECIFICATION

### MATIERES

PE

### COLORIS STANDARD

Noir

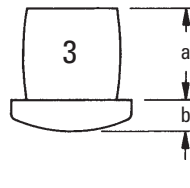
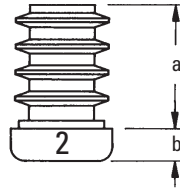
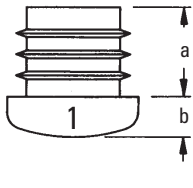
## ESPECIFICACION

### MATERIALES

PE

### COLORES ESTANDAR

Negro



### HEAVY DUTY RIBBED (1)

NO.	Ins. x Gauge	mm	a	b
55051011B0	1/2 x 18/16	12.5 x 1.25/1.5	-	-
55111011B0	5/8 x 20/16	16 x 1/1.5	-	-
55201011	3/4 x 18/16	19 x 1.25/1.5	12.75	6.25
55221011	3/4 x 14/16	19 x 2/1.5	12.75	5.75
55301011	7/8 x 18/16	22.2 x 1.25/1.5	12.75	6.25
55391011	1 x 18/16	25 x 1.25/1.5	12.75	6.25
55411011B0	1 x 14/10	25.4 x 2/3.25	-	-
55121011B0	1 1/8 x 20/14	28.6 x 1/2.0	-	-
55551011	1 1/4 x 18/16	31.7 x 1.25/1.5	12.60	6.50
55781011	-----	33.7 x 2.6/4.0	15.00	5.50
55071011B0	1 1/2 x 20/14	38 x 1/2.0	-	-
55131011B0	1 5/8 x 18/14	41.3 x 1.25/2.0	-	-
55801011	-----	42.4 x 2.6/4.0	17.50	7.50
55141011B0	1 3/4 x 20/14	44.4 x 1/2.0	-	-
55041011B0	-----	48.3 x 1.2/3.6	-	-
55821011	-----	48.3 x 3.2/5.0	19.00	8.00
55151011B0	-----	50 x 1/2.5	-	-
55061011B0	2 x 20/14	50.8 x 1/2.0	-	-
55841011	-----	60.3 x 3.2/5.0	20.50	10.00
55101011B0	2 1/2 x 18/14	63.5 x 1.25/2.0	-	-
55861011	-----	76.1 x 3.2/5.0	22.00	13.00
55081011B0	-----	88.9 x 1.8/4.0	-	-
55091011B0	-----	114.3 x 3.2/5.5	-	-



### HEAVY DUTY FEET (Thick Head) (2)

NO.	Ins. x Gauge	mm	a	b
55401011	1 x 14/16	25 x 1.5/2	29.75	8.00
55501011	1 1/8 x 14/16	28.6 x 1.5/2	30.50	8.00
55601011	1 1/4 x 14/16	32 x 1.5/2	32.00	15.50
26301011	1 1/2 x 16	38 x 1.5	-	-



### HEAVY DUTY PLAIN (3)

NO.	Ins. x Gauge	mm	a	b
25041011	3/8 x 20	10 x 1	9.50	2.50
25071011	1/2 x 20	13 x 1	12.75	3.25
25131011	5/8 x 20	16 x 1	12.00	4.00
25151011	5/8 x 16	16 x 1.5	12.00	4.00
25241011	3/4 x 16	19 x 1.5	15.00	6.25
25331011	7/8 x 14	-	15.50	6.00
25561011	1 1/16 x 10	27 x 3.25	15.00	6.25
25461011	1 1/8 x 18	28 x 1	15.00	7.25
		28.5 x 1.25		
25471011	1 1/8 x 16	28.6 x 1.5	15.00	7.25
25661011	1 5/8 x 16	41.5 x 1.5	19.00	8.75
25761011	2 x 18	50 x 1/1.25	19.00	9.50
25811011	2 x 10	50 x 3	19.00	9.50
25901011	3 x 10	75 x 3	25.50	15.00
90691011*	3 x 10	75 x 3	25.00	19.00
25931011	3 1/2 x 10	88.5 x 3.25	24.50	17.50



\* Overhung shroud

\* Rohrende komplett verdeckt

\* Côté enveloppant

\* Parte externa envolvente

## SPECIFICATION MATERIALS

PE  
STANDARD COLOURS  
Black

## TECHNISCHE DATEN MATERIAL

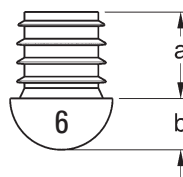
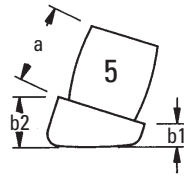
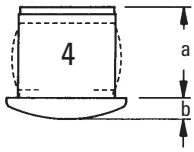
PE  
STANDARDFARBEN  
Schwarz

## SPECIFICATION MATIERES

PE  
COLORIS STANDARD  
Noir

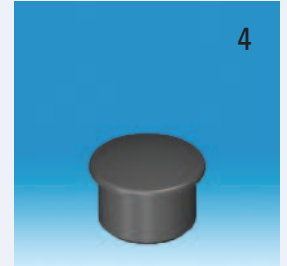
## ESPECIFICACION MATERIALES

PE  
COLORES ESTANDAR  
Negro



### LIGHT DUTY PLAIN (4)

NO.	Ins. x Gauge	mm	a	b
24321011	1/2 x 20	13 x 1	8.75	2.50
24331011	1/2 x 18	13 x 1.25	8.75	2.50
24381011	5/8 x 20	16 x 1	8.00	2.50
24391011	5/8 x 18	16 x 1.25	8.75	2.50
24401011	5/8 x 16	16 x 1.75	8.75	2.50
24421011	-----	16 x 2	8.75	3.25
24501011	3/4 x 19/20	19 x 1	8.00	2.50
24521011	3/4 x 18	19 x 1.25	7.25	3.25
24491011	3/4 x 16	19 x 1.5	11.00	3.25
24601011	7/8 x 18	22 x 1.25	8.00	3.25
24581011	7/8 x 16	22 x 1.5	12.00	3.25
24631011	1 x 18	25 x 1.25	12.75	3.25
		25.4 x 1.25		
24641011	1 x 16	25 x 1.5	12.75	3.25



### ANGLED (5)

NO.	Ins. x Gauge	mm	a	b1	b2
25171011	5/8 x 17	-	14	6	11.25
25181011	5/8 x 16	-	14	5	8.75
25201011	3/4 x 18	19 x 1.25	15.75	6	13.5
25291011	3/4 x 16	19 x 1.5	15.75	5	11
25301011*	3/4 x 16	19 x 1.5	15.5	4	12
25271011	3/4 x 16	19 x 1.5	15.5	5.5	13.5
25281011	3/4 x 14	19 x 2	15.7	5.5	11.25
26021011	7/8 x 17	-----	15.7	5.5	16.25



\* Trailing edge

\* Überstehende Kante

\* Base élargie

\* Pata más grande

### DOMED INSERT (6)

NO.	Ins. x Gauge	mm	a	b
55341012		16 x 1.5	14	8
55351012		19 x 1.5	16	9.5



# SQUARE INSERTS

## SPECIFICATION MATERIALS

PE  
STANDARD COLOURS  
Black

## TECHNISCHE DATEN MATERIAL

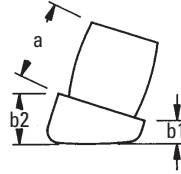
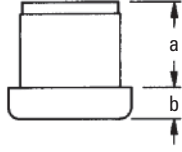
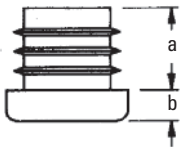
PE  
STANDARDFARBEN  
Schwarz

## SPECIFICATION MATIERES

PE  
COLORIS STANDARD  
Noir

## ESPECIFICACION MATERIALES

PE  
COLORES ESTANDAR  
Negro



## SQUARE RIBBED

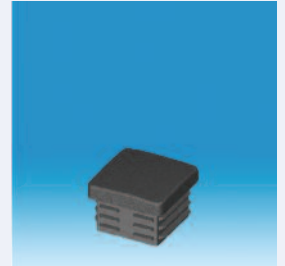
NO.	Ins x Ins x Gauge	mm	a	b
59331011B0	1/2 x 1/2 x 18/16	12.7 x 12.7 x 1.25/1.5	-	-
59341011B0	5/8 x 5/8 x 18/16	16 x 16 x 1.0/2.0	-	-
59321011	3/4 x 3/4 x 18/16	19 x 19 x 1.25/1.5	12.75	4.75
59411011	-----	20 x 20 x 1.25/1.5	13.50	4.75
59451011	7/8 x 7/8 x 18/16	22.2 x 22.2 x 1.25/1.5	12.75	4.75
59601011	1 x 1 x 18/16	25 x 25 x 1.25/1.5	12.75	5.50
59801011*	-----	25 x 25 x 1.25/1.5	12.00	5.00
59021011	1 x 1 x 14/10	25 x 25 x 2/3.2	16.00	5.50
59711011	-----	30 x 30 x 1.5/2.0	15.75	5.50
59701011	1 1/4 x 1 1/4 x 18/16	32 x 32 x 1.25/1.5	16.00	6.00
59041011B0	-----	35 x 35 x 1.25/1.5	-	-
59131011	1 1/2 x 1 1/2 x 18/10	38 x 38 x 1.25/3.0	20.50	8.00
59751011	-----	40 x 40 x 1.25/2.0	12.00	5.00
59051011	-----	40 x 40 x 2.6/4.0	18.00	6.50
59161011	2 x 2 x 12/10	50.8 x 50.8 x 2.0/3.2	20.50	7.00
59071011	-----	50 x 50 x 3.2/5.0	20.00	7.00
59081011	-----	60 x 60 x 3.2/5.0	20.00	7.00
59101011	-----	70 x 70 x 3.6/5.0	20.00	8.00
59241011	-----	80 x 80 x 3.0/5.0	25.00	8.50
59261011	-----	90 x 90 x 3.6/6.3	25.00	9.00
59281011	-----	100 x 100 x 4.0/6.3	25.00	9.50
59291011B0	-----	110 x 110 x 3/5	-	-
59301011B0	-----	120 x 120 x 2.5/5	-	-

\* Lighter duty than 59601011

\* stopfen leichter als 59601011

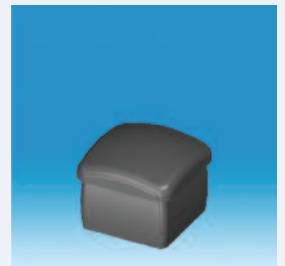
\* Plus léger que le 59601011

\* Más Ligero que el 59601011



## SQUARE PLAIN

NO.	Ins x Ins x Gauge	mm	a	b
29061011	1/2 x 1/2 x 18	12.5 x 12.5 x 1.25	8.75	3.25
29111011	5/8 x 5/8 x 18	16 x 16 x 1.25	11.00	4.00
29121011	5/8 x 5/8 x 16	16 x 16 x 1.5	11.00	4.00
28821011	3/4 x 3/4 x 14	19 x 19 x 2	15.00	8.00
27801011	1 1/8 x 1 1/8 x 18	28.5 x 28.5 x 1.25	15.00	8.75
28061011	1 1/8 x 1 1/8 x 16	28.5 x 28.5 x 1.5	15.00	8.00
28401011	2 1/2 x 2 1/2 x 10	64 x 64 x 3.5	18.25	9.50
28411011	3 x 3 x 10	75.5 x 75.5 x 3.5	23.75	9.50
28421011	3 x 3 x 8	75.5 x 75.5 x 4	23.75	9.50
29201011B0	-----	100 x 100 x 8	-	-
28711011	-----	110 x 110 x 4	25.50	8.00



## ANGLED PLAIN

NO.	Ins x Ins x Gauge	mm	a	b1	b2
27511011	5/8 x 5/8 x 16	16 x 16 x 1.5	14.25	4	10
27601011	3/4 x 3/4 x 16	19 x 19 x 1.5	15.50	4	9



# RECTANGULAR AND FLAT SIDED OVAL INSERTS

## SPECIFICATION MATERIALS

PE  
STANDARD COLOURS  
Black

## TECHNISCHE DATEN MATERIAL

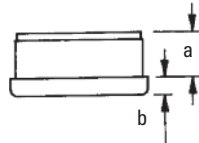
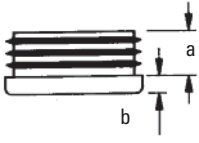
PE  
STANDARDFARBEN  
Schwarz

## SPECIFICATION MATIERES

PE  
COLORIS STANDARD  
Noir

## ESPECIFICACION MATERIALES

PE  
COLORES ESTANDAR  
Negro



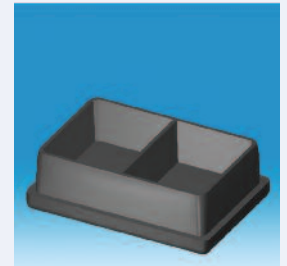
### RECTANGULAR RIBBED

NO.	Ins x Ins x Gauge	mm	a	b
59771011	-----	40 x 20 x 1.25/2.0	13.00	5.00
59781011	1 7/8 x 15/16 x 18/16	-----	16.00	8.50
59181011B0	-----	50 x 20 x 1.5/2.0	-	-
59851011	-----	50 x 25 x 1/1.5	-	-
59811011	2 x 1 x 18/10	50 x 25 x 1.25/3.0	16.00	5.50
59791011	-----	50 x 30 x 2.6/3.2	20.00	7.00
59991011B0	-----	60 x 20 x 1.2/1.6	-	-
59191011	-----	60 x 30 x 1.25/2.5	15.00	5.00
59841011	-----	60 x 40 x 3.2/4.0	20.00	7.50
59881011	-----	80 x 40 x 3.2/4.0	25.00	8.50
59921011B0	-----	90 x 50 x 2/4.5	-	-
59671011B0	-----	100 x 25 x 1.5/3.0	-	-
59681011B0	-----	100 x 30 x 1.5/3.5	-	-
59691011B0	-----	100 x 40 x 2.0/4.0	-	-
59931011	-----	100 x 50 x 2.4/4.0	20.00	6.50
59941011B0	-----	100 x 60 x 2.5/4.0	-	-
59951011B0	-----	120 x 30 x 1/2.5	-	-
59961011B0	-----	120 x 40 x 3/5	-	-
59971011B0	-----	120 x 50 x 3.5/5.5	-	-
59981011B0	-----	120 x 60 x 2/4	-	-



### RECTANGULAR PLAIN

NO.	Ins x Ins x Gauge	mm	a	b
29811011	1 x 1/2 x 16	25.4 x 12.7 x 1.5	9.50	4.00
28511011	1 3/8 x 5/8 x 16	34.5 x 15.7 x 1.5	15.00	6.25
28521011	1 1/2 x 3/4 x 18	37.7 x 19 x 1.25	15.00	6.25
29851011	1 1/2 x 3/4 x 16	38 x 19 x 1.5	9.50	3.25
29881011	1 3/4 x 5/8 x 16	-----	11.00	4.75
29921011	-----	60 x 20 x 1.5	12.75	4.75
28641011	2 1/2 x 1 1/2 x 10	63.6 x 38.3 x 3	18.25	9.50
28651011	3 x 1 1/2 x 10	75 x 38 x 3	21.50	9.50



### FLAT SIDED OVAL INSERTS RIBBED

NO.	Ins x Ins x Gauge	mm	a	b
93031011B0	-----	30 x 15 x 1/2.5	-	-
93001011B0	-----	40 x 20 x 1/2.5	-	-
93101011B0	-----	50 x 20 x 1/2.5	-	-
93051011B0	-----	50 x 25 x 1/2.5	-	-
90361011B0	-----	60 x 30 x 1/2	-	-
93131011B0	-----	38 x 20 x 1/2.5	-	-



# PLASTIC FERRULES

## SPECIFICATION MATERIALS

PE  
**STANDARD COLOURS**  
 Black  
**NOTE**  
 Matching Pair \*\*

## TECHNISCHE DATEN MATERIAL

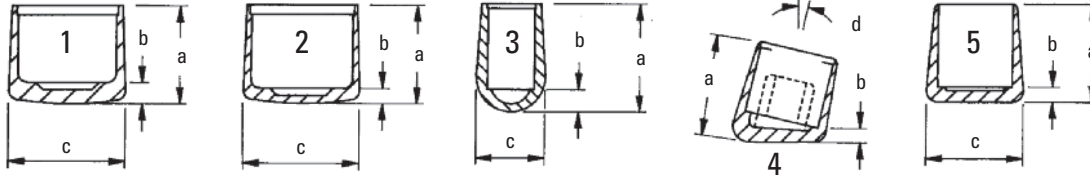
PE  
**STANDARDFARBEN**  
 Schwarz  
**NOTIZEN**  
 Gepaarte Artikel \*\*

## SPECIFICATION MATIERES

PE  
**COLORIS STANDARD**  
 Noir  
**NOTES**  
 Font la paire \*\*

## ESPECIFICACION MATERIALES

PE  
**COLORES ESTANDAR**  
 Negro  
**NOTAS**  
 Hacen juego \*\*



### HEAVY DUTY (1)

NO.	Ins.	mm	a	b	c
21091011	5/16	8	17.50	2.50	12.00
21201011	7/16	11	18.25	3.25	14.25
20201011	1/2	12.5-12.7	13.00	3.00	15.75
20301011	5/8	16	16.00	3.25	19.00
20401011	3/4	19	19.00	4.00	23.25
20411011**	3/4	19	23.00	4.50	24.00
20501011	7/8	-	22.50	4.50	26.75
22241011	-	22 Extra Heavy	33.00	7.00	29.00
20601011	1	25-25.4	25.25	5.25	29.00
21661011	1 1/8	28.6	28.00	6.00	32.75
20671011	1 1/4	31.7-32	31.50	6.25	36.75
21691011	1 1/4	Medium Duty	15.25	2.25	35.75
20751011	1 3/4	44.5	38.00	6.25	49.25
20781011	1 29/32	48.5	50.75	9.50	54.00
20821011	2 3/8	60.3	31.00	5.50	65.00
20861011	3	76.2	33.25	4.75	80.25
20891011	3 1/2	88.9	35.00	6.25	92.75
20921011	4	101.6	36.50	6.25	105.50
20931011	4 1/2	114.3	37.25	5.50	119.75

### LIGHT DUTY (2)

NO.	Ins.	mm	a	b	c
21231011	1/2	12.7	12.00	3.00	15.00
21331011	5/8	16	16.25	4.00	18.50
21431011	3/4	19	18.00	4.00	20.00
21531011	7/8	-	20.25	5.00	25.25

### TAPERED (3)

NO.	Ins.	mm	a	b	c
90481011	1/4	6.3	19.25	6.25	13.00
22141011	3/8	9.5	21.50	3.25	15.00
22221011	1/2	12.5-13	34.25	9.50	21.50
22261011	9/16	14	35.00	7.25	22.25
22311011	5/8	16	25.50	6.25	20.75
22321011	5/8	16	30.50	12.00	25.00
22421011	3/4	19	36.00	10.75	27.70
22351011	3/4	19	30.25	8.00	23.75

### ANGLED (4)

NO.	Ins.	mm	a	b	c
20351011	5/8 x 16g	16 (1.5)	24.00	3.50	19°
20421011**	3/4	19	26.00	4.50	9°
20431011	3/4	19	26.00	4.00	19°

### SQUARE (5)

NO.	Ins.	mm	a	b	c
23541011	3/4 x 3/4	19 x 19	-	-	-
23571011		20 x 20	26.00	3.75	25.75
23621011		25 x 25	30.00	4.00	31.00
23691011		30 x 30	35.00	4.25	38.00



# MISCELLANEOUS MOULDINGS

## SPECIFICATION

### MATERIALS

PE

### STANDARD COLOURS

Black

## TECHNISCHE DATEN

### MATERIAL

PE

### STANDARDFARBEN

Schwarz

## SPECIFICATION

### MATIERES

PE

### COLORIS STANDARD

Noir

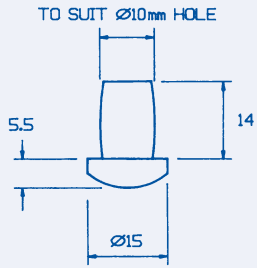
## ESPECIFICACION

### MATERIALES

PE

### COLORES ESTANDAR

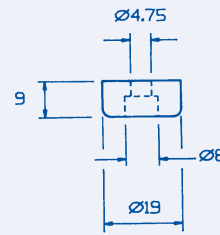
Negro



### NO.

90131012

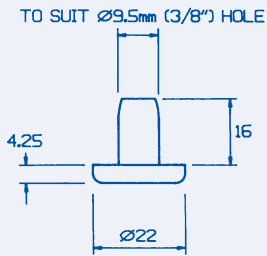
Insert glide 15mm diameter 10mm hole.



### NO.

90191011

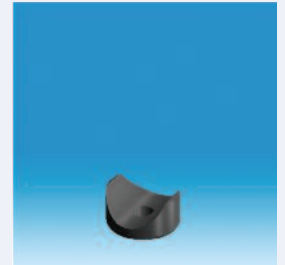
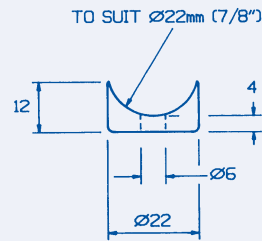
3/4" diameter polythene buffer.



### NO.

90081015

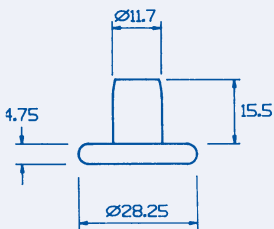
7/8" dia insert glide for 0.375" dia hole



### NO.

93401011

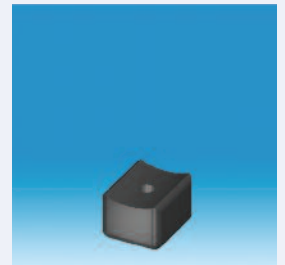
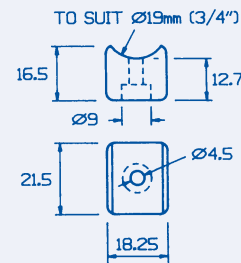
7/8" dia buffer for 7/8" O.D. tube.



### NO.

90301015

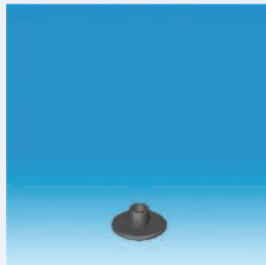
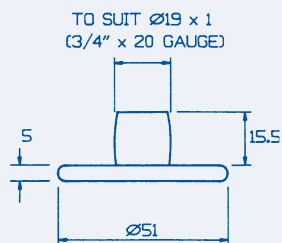
1 1/8" dia insert glide for 0.461" dia hole



### NO.

90141011

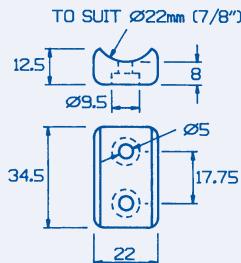
Rectangular polythene buffer.



### NO.

93171011

3/4" O.D. x 20g insert with 2" x 3/16" thick head



### NO.

93721011

Horizontal tube support for 7/8" O.D. tube.



## HORIZONTAL TUBE SUPPORTS

### SPECIFICATION

#### MATERIALS

PE

#### STANDARD COLOURS

Black

### TECHNISCHE DATEN

#### MATERIAL

PE

#### STANDARDFARBEN

Schwarz

### SPECIFICATION

#### MATIERES

PE

#### COLORIS STANDARD

Noir

### ESPECIFICACION

#### MATERIALES

PE

#### COLORES ESTANDAR

Negro

#### NO.

93141011B0

3/4" x 3/4" Horizontal Ferrule

93191011

25 x 25 Horizontal Ferrule

93201011B0

1 1/2" x 3/4" Horizontal Ferrule

93181011B0

40 x 20 Horizontal Ferrule

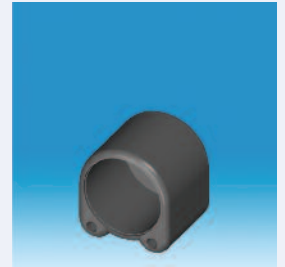
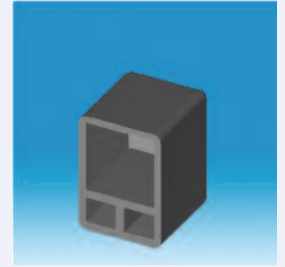
93151011B0

2" x 1" Horizontal Ferrule

#### NO.

93281011

Ø 28mm Horizontal Ferrule



## ANGLE IRON FEET

### SPECIFICATION

#### MATERIALS

PE

#### STANDARD COLOURS

Black

### TECHNISCHE DATEN

#### MATERIAL

PE

#### STANDARDFARBEN

Schwarz

### SPECIFICATION

#### MATIERES

PE

#### COLORIS STANDARD

Noir

### ESPECIFICACION

#### MATERIALES

PE

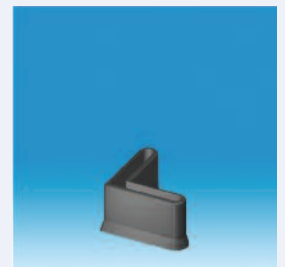
#### COLORES ESTANDAR

Negro

#### NO.

90151011

1" x 1" x 1/8" Angle Iron Ferrule



## NAIL ON GLIDES

### SPECIFICATION

#### MATERIALS

PA

Nails Steel BZP

#### STANDARD COLOURS

White

### TECHNISCHE DATEN

#### MATERIAL

PA

Nägel Stahl Verzinkt

#### STANDARDFARBEN

Weiss

### SPECIFICATION

#### MATIERES

PA

Clous Acier, plaqué de zinc

#### COLORIS STANDARD

Blanc

### ESPECIFICACION

#### MATERIALES

PA

Clavos Acero, chapado de zinc

#### COLORES ESTANDAR

Blanco

#### NO.

9039-3B0

45 x 20mm Nail on Glide



# GUY-RAYMOND ENGINEERING COMPANY LIMITED

## TERMS AND CONDITIONS OF SALE

### 1. THE CONTRACT

These conditions shall form part of every contract of sale entered into by Guy-Raymond Engineering Company Limited ("the Company") and any purported variation or exclusion (whether contained in any document of the buyer or otherwise) shall be of no effect unless accepted in writing by an authorised representative of the Company.

### 2. ORDERS AND SPECIFICATIONS

- 2.1 An order whether or not based upon a quotation shall not be binding on the Company unless accepted in writing by an authorised representative of the Company and where goods are supplied from the Company's stock despatch of the Company's invoice to the buyer shall be deemed such written acceptance.
- 2.2 All quotations are made subject to the goods or materials being available on receipt of the order.
- 2.3 All specifications, drawings and particulars supplied by the Company are approximate only unless otherwise stated and the Company reserves the right to alter specifications and make modifications without notice to the buyer.
- 2.4 Where the Company manufactures or applies a process to the goods as specified by the buyer, the buyer shall fully indemnify the Company in any third parties' claim for infringement of its intellectual property rights resulting from the Company's use of the buyer's specification.

### 3. PRICE

- 3.1 Unless otherwise stated all prices quoted are exclusive of VAT.
- 3.2 All prices are subject to revision without notice and will be invoiced at prices ruling at the date of invoice.
- 3.3 The buyer shall at the Company's written request pay a charge in addition to the price of the goods where special moulds, dies, tools or fixtures are required for production of the goods and which remain the property of the Company.
- 3.4 The buyer shall at the Company's written request pay a charge in addition to the price of the goods for all tests or modifications requested by the buyer after acceptance of the order.

### 4. PAYMENT

- 4.1 Where goods are delivered in the United Kingdom the payment terms of this clause 4 shall apply and where goods are for export the payment terms of clause 10 apply.
- 4.2 All sums become due and payable under these terms and conditions not later than 28 days from the date of invoice time being of the essence.
- 4.3 The Company reserves the right to charge interest at 3 per centum per annum above National Westminster Bank plc base rate from time to time in force on all overdue accounts, such interest being deemed to accrue on a day to day basis from the due date for payment in full.
- 4.4 If the buyer shall default in payment on the due date the Company shall be entitled to cancel the contract or suspend further deliveries of goods to the buyer whether or not ordered under the same contract and to stop any goods in transit.
- 4.5 If the buyer (being a Company) has a petition presented for its winding-up or the appointment of an Administrator or passes a resolution for voluntary winding-up otherwise than for the purpose of a bona fide amalgamation or reconstruction or compounds or enters into any arrangement with its creditors or has a Receiver or Administrative Receiver appointed of all or any part of its assets or (being an individual) becomes bankrupt or insolvent or enters into any arrangement with his creditors or any judgement is obtained against the buyer or any distress or execution is levied on any premises owned or occupied by the buyer or the buyer ceases or threatens to cease to carry on business or commits a material or serious breach of the contract or the Company reasonably apprehends any of the above events is likely to occur and notifies the buyer accordingly then the buyer will be deemed to have repudiated the contract and all sums owing to the Company on any account shall become due and payable immediately notwithstanding any previous agreement or arrangement to the contrary.

### 5. DELIVERY

- 5.1 Delivery dates are estimates only and time of delivery is not of the essence of the contract.
- 5.2 The Company shall not be liable for any loss whatever or however arising caused by its non-delivery.
- 5.3 The Company reserves the right to make delivery by instalments and to tender a separate invoice in respect of each instalment.
- 5.4 Where goods are sold to the buyer in the United Kingdom and are not for export the buyer shall either itself or by its duly authorised representative sign the delivery ticket as acknowledgement of delivery provided that on delivery to the address nominated by the buyer the Company shall be entitled to assume that any signature given is that of such a representative.
- 5.5 The Company reserves the right to deliver up to 10% more or less than the quantity ordered and adjust the price pro rata.
- 5.6 The Company reserves the right to invoice and deliver goods made to the buyer's specification notwithstanding the termination of the contract however caused.

### 6. INSPECTION

- 6.1 The Company shall have no liability for any defects or shortages that would be apparent on careful inspection on delivery unless a written complaint is delivered to the Company within 7 days of delivery detailing the alleged defect or shortage.
- 6.2 The Company's liability in respect of such defects or shortages shall be limited to replacing or repairing or giving credit for such goods as determined by the Company.

### 7. TITLE AND RISK

- 7.1 Title in all the goods shall remain in the Company until payment due under all contracts is received in full or until title passes in accordance with clause 7.2 (whichever is the sooner).
- 7.2 Clause 7.1 shall not prevent the buyer from agreeing to sell the goods and in the event of such agreement title in the goods shall

remain with the Company until such time as title in the goods is to pass to the sub-purchaser and payment is received under the terms of the said agreement.

- 7.3 The relationship between the Company and the Buyer shall be fiduciary in respect of the goods until such times as title in the goods passes from the Company. In the event that title in the goods passes from the Company by virtue of a sale under clause 7.2 the fiduciary relationship of the Company's proprietary right shall transfer to the proceeds thereof and (without prejudice to the above) the buyer shall hold the said proceeds on trust for the Company in a separate bank account opened for this purpose to make or complete full payment for the goods.
- 7.4 If the buyer shall default in payment on the due date or if any event specified in clause 4.5 shall occur the Company shall be entitled to repossess the goods and the buyer shall grant the Company an irrevocable licence to enter upon any land or premises where goods are situated for the time being to recover the goods. This right shall continue to subsist notwithstanding the termination of the contract for any reason and is without prejudice to any other rights of the Company.
- 7.5 The risk in the goods shall pass to the buyer upon delivery.

### 8. REPRESENTATIONS

- 8.1 The buyer is responsible for the suitability of the goods.
- 8.2 The goods are supplied by the Company on the basis that they conform to the written terms and to any description contained in this document. No other representations, terms, conditions or warranties of any sort whatever whether written or oral alleged to have been made or entered into by the Company or any servant or agent of the Company shall be of any force or effect.

### 9. GUARANTEE

- 9.1 Subject to the conditions of this clause 9 the purchase price of the goods will be refunded or at the Company's option the defective part or parts of the goods will be replaced if the Company is satisfied that they were defective in materials and workmanship on delivery and notice of the defect is given to the Company within six months of delivery and the goods are returned carriage paid.
- 9.2 The Company shall have no further liability in respect of the goods or any defects therein and all conditions and warranties whether express or implied by law as to the quality of the goods or their fitness for a particular purpose or otherwise are expressly excluded except insofar as statute provides to the contrary.
- 9.3 The Company shall not be responsible for any injury damage or loss caused directly or indirectly by the goods whether as a result of their operation or use or otherwise and whether as a result of any defect or otherwise and the buyer shall indemnify the Company from any claim arising from such injury damage or loss suffered by any third party except insofar as statute provides to the contrary.
- 9.4 Where the goods are sold under a consumer sale (as defined by the Sale of Goods Act 1979) the statutory rights of the buyer are not affected by these conditions.
- 9.5 The Company's liability in respect of the goods under this clause 9 shall not exceed the purchase price of the goods.

### 10. EXPORT ITEMS

- 10.1 Where the goods are supplied for export from the United Kingdom the provisions of this clause 10 shall apply.
- 10.2 The buyer shall be responsible for complying with any legislation or regulations governing importation into the country of destination and for payment of any duties.
- 10.3 The Company shall specify the terms of delivery on its written acceptance of order under clause 2.1 as either C.I.F. main sea port or F.O.B. the UK air or sea port of shipment in which event the Company shall be under no obligation to give notice under section 32 (3) of the Sale of Goods Act 1979.
- 10.4 The buyer shall be responsible for arranging for testing and inspection of the goods before shipment at the Company's premises and the Company shall not be liable for any claim in respect of any defect in the goods which would be apparent on inspection and which is made after shipment, or in respect of any damage during transit.
- 10.5 The terms of payment shall be agreed in advance in writing by a duly authorised representative of the Company.

### 11. INTELLECTUAL PROPERTY

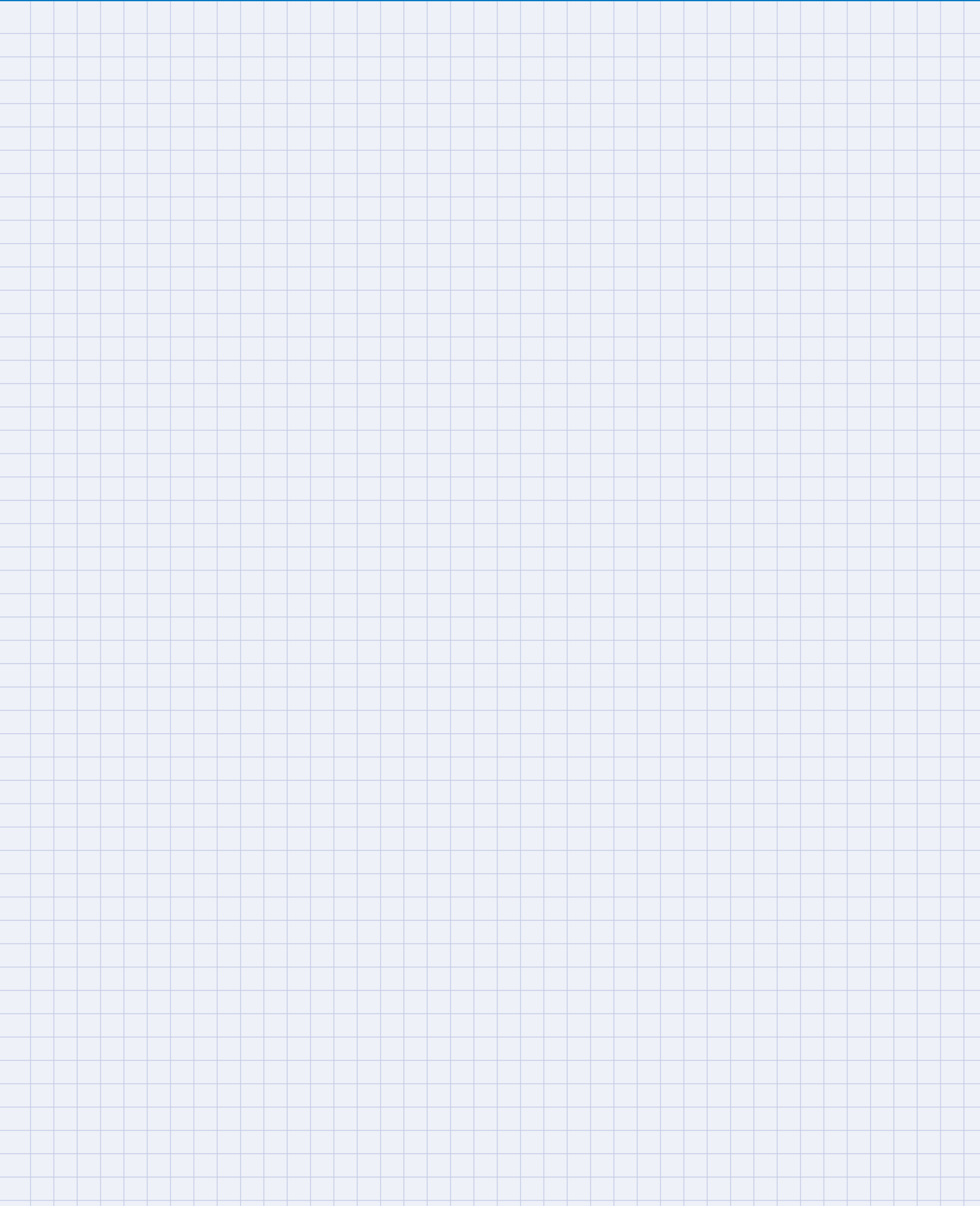
The copyright, design right, registered design, patent, trade mark or any other intellectual property right in relation to the goods and tooling remains the property of the Company.

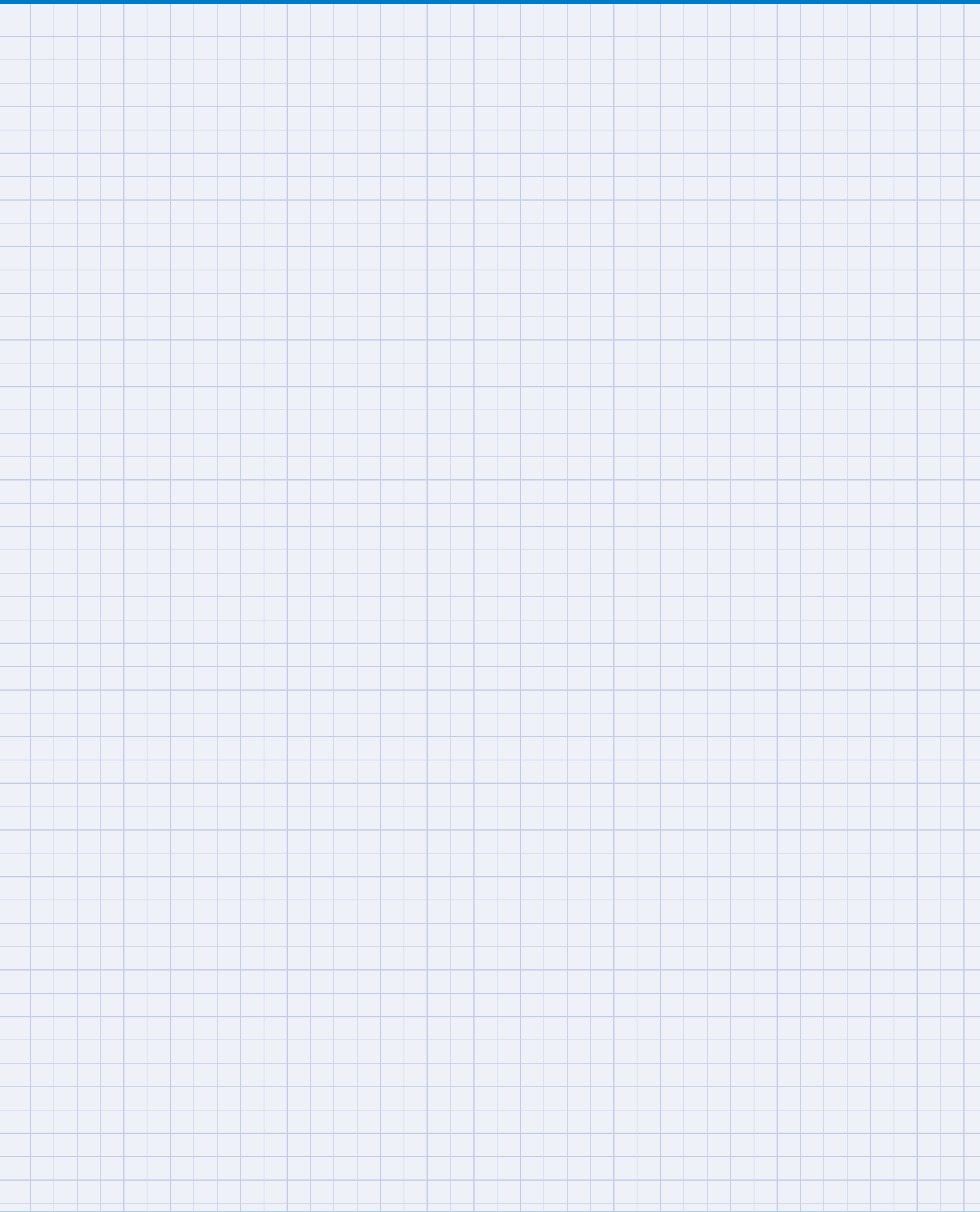
### 12. FORCE MAJEURE

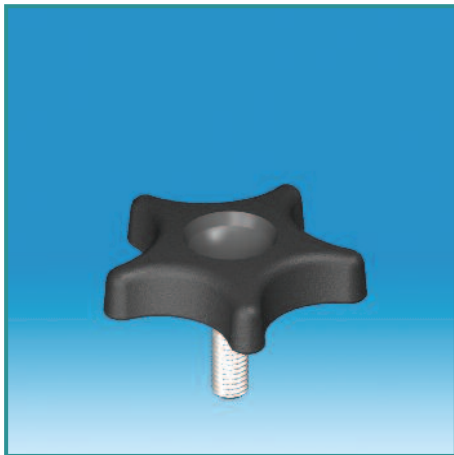
The Company will not be liable for any loss or consequential liability or damage resulting from any delay in performing or failure to perform the contract by reason of an act of God, explosion, flood, fire war, riot, strike, lock-out, government control or regulation, abnormal weather conditions, accident, breakdown or any other circumstances beyond the Company's control.

### 13. GENERAL

- 13.1 These Terms and Conditions as amended from time to time will apply to any subsequent orders placed by the buyer.
- 13.2 No waiver by the Company of any breach of the contract by the buyer shall be considered as a waiver by any subsequent breach of the same or any other provision.
- 13.3 Any notice to be given shall be in writing and shall be deemed to have been duly given if sent or delivered to the buyer at its registered office or principal place of business or such other address as may at the relevant time have been notified to the Company pursuant to this clause 13.3 and shall be deemed to have been served, if sent by post, 48 hours after posting or if by telex or facsimile transmission at the time of sending.
- 13.4 The contract shall be governed by English law. The only tribunals with authority to determine any dispute arising directly or indirectly from the contract shall be the Courts of England.







Download  
New GRX Castors  
Catalogue @  
[www.guy-raymond.com](http://www.guy-raymond.com)

