

# GUY-RAYMOND



**GRX38 CASTORS**  
Rollen ■ Roulettes ■ Ruedas

# GRX38 CASTOR

## SPECIFICATION

### CASTOR TYPE

Swivel

### MATERIALS

Castor PA

Soft Tyre PUR

### STANDARD COLOURS

Black

Aluminium RAL 9006

Grey RAL 7035

White RAL 9003

### STANDARDS

EN 12528

## TECHNISCHE DATEN

### ROLLEN TYP

Lenkrolle

### MATERIAL

Rollen PA

Weiche Lauffläche PUR

### STANDARDFARBEN

Schwarz

Aluminium RAL 9006

Lichtgrau RAL 7035

Weiss RAL 9003

### NORMEN

EN 12528

## SPECIFICATION

### TYPE DE ROULETTE

Pivotante

### MATIERES

Roulette PA

Bandes Souples PUR

### COLORIS STANDARD

Noir

Alu RAL 9006

Gris Clair RAL 7035

Blanc RAL 9003

### NORMES

EN 12528

## ESPECIFICACION

### TIPO DE RUEDA

Giratoria

### MATERIALES

Rueda Nilón

Rodadura Blanda Poliuretano

### COLORES ESTANDAR

Negro

Aluminio RAL 9006

Gris RAL 7035

Blanco RAL 9003

### NORMAS

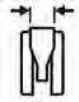
EN 12528



38



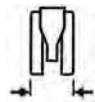
38



15



12



46



13



39



Up to 60kg(x)  
(x)Depends on fixing

### NO.

3G00-1  
3G00-1-1U

GRX38  
GRX38 Soft Tyre

**BLACK HARD WHEEL  
BLACK SOFT TYRE**



### NO.

3G00-64  
3G00-64-64-T1U

GRX38 RAL 9006  
GRX38 RAL 9006 Soft Tyre

**ALUMINIUM-RAL9006 HARD WHEEL  
ALUMINIUM-RAL9006 SOFT TYRE**

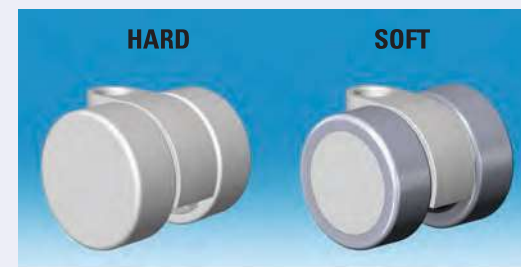


### NO.

3G00-25  
3G00-25-25U

GRX38 RAL 7035  
GRX38 RAL 7035 Soft Tyre

**GREY – RAL 7035 HARD WHEEL  
GREY – RAL 7035 SOFT TYRE**



### NO.

3G00-3  
3G00-3-3U

GRX38 RAL 9003  
GRX38 RAL 9003 Soft Tyre

**WHITE – RAL 9003 HARD WHEEL  
WHITE – RAL 9003 SOFT TYRE**



# GRX38FB WHEEL BRAKE CASTOR

## SPECIFICATION

### CASTOR TYPE

Wheel Brake

### MATERIALS

Castor PA

Soft Tyre PUR

### STANDARD COLOURS

Black

Aluminium RAL 9006

Grey RAL 7035

White RAL 9003

### STANDARDS

EN 12528

## TECHNISCHE DATEN

### ROLLEN TYP

Radfeststeller

### MATERIAL

Rollen PA

Weiche Lauffläche PUR

### STANDARDFARBEN

Schwarz

Aluminium RAL 9006

Lichtgrau RAL 7035

Weiss RAL 9003

### NORMEN

EN 12528

## SPECIFICATION

### TYPE DE ROULETTE

Blocage de Roue

### MATIERES

Roulette PA

Bandes Souples PUR

### COLORIS STANDARD

Noir

Alu RAL 9006

Gris Clair RAL 7035

Blanc RAL 9003

### NORMES

EN 12528

## ESPECIFICACION

### TIPO DE RUEDA

Freno de Rueda

### MATERIALES

Rueda Nilón

Rodadura Blanda Poliuretano

### COLORES ESTANDAR

Negro

Aluminio RAL 9006

Gris RAL 7035

Blanco RAL 9003

### NORMAS

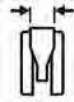
EN 12528



38



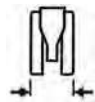
38



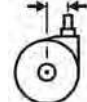
15



12



46



13



47.5



Up to 60kg(x)  
(x)Depends on fixing

### NO.

3H00-1  
3H00-1-1U

GRX38FB  
GRX38FB Soft Tyre

**BLACK HARD WHEEL  
BLACK SOFT TYRE**



### NO.

3H00-64  
3H00-64-64-T1U

GRX38FB RAL 9006  
GRX38FB RAL 9006 Soft Tyre

**ALUMINIUM-RAL 9006 HARD WHEEL  
ALUMINIUM-RAL 9006 SOFT TYRE**



### NO.

3H00-25  
3H00-25-25U

GRX38FB RAL 7035  
GRX38FB RAL 7035 Soft Tyre

**GREY – RAL 7035 HARD WHEEL  
GREY – RAL 7035 SOFT TYRE**



### NO.

3H00-3  
3H00-3-3U

GRX38FB RAL 9003  
GRX38FB RAL 9003 Soft Tyre

**WHITE – RAL 9003 HARD WHEEL  
WHITE – RAL 9003 SOFT TYRE**



## SPECIFICATION

### MATERIALS

Steel BZP

## TECHNISCHE DATEN

### MATERIAL

Stahl Verzinkt

## SPECIFICATION

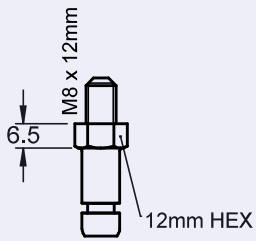
### MATIERES

Acier, plaqué de zinc

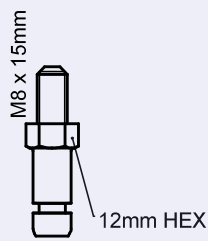
## ESPECIFICACION

### MATERIALES

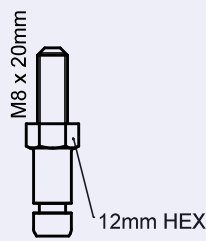
Acero chapado de zinc



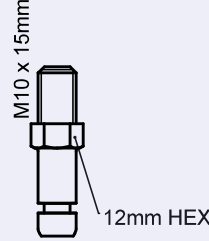
M8 x 12mm  
No.19M2P



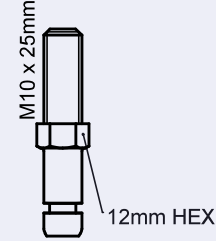
M8 x 15mm  
No.19M3P



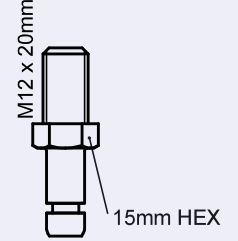
M8 x 20mm  
19M4P



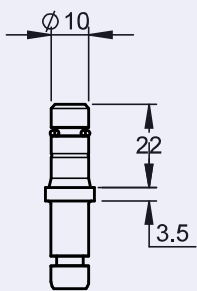
M10 x 15mm  
No.19M0P



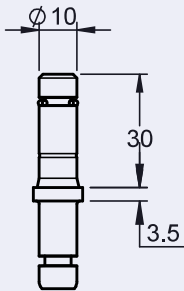
M10 x 25mm  
No.19M1P



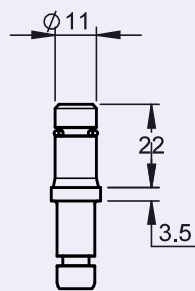
M12 x 20mm  
No.19M5P



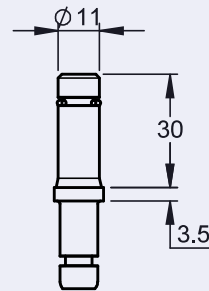
Ø 10 x 22mm  
No.19M8P



Ø 10 x 30mm  
No.19M9P



Ø 11 x 22mm  
No.19M6P



Ø 11 x 30mm  
No.19M7P

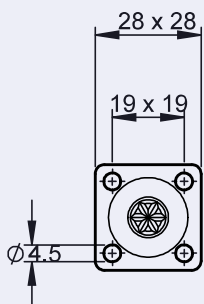


PLATE FIXING  
No.19N0-9231

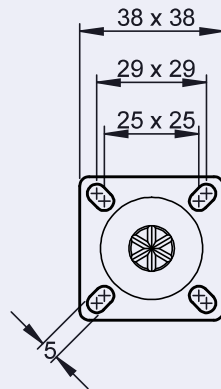


PLATE FIXING  
No.19N1-9209

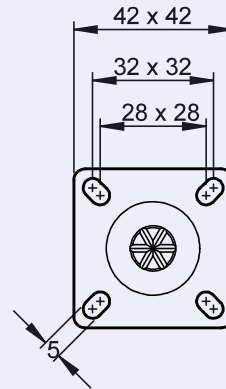


PLATE FIXING  
No.19N1-9211

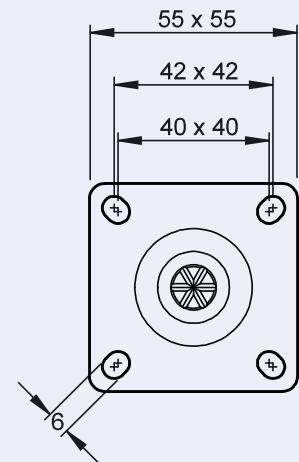


PLATE FIXING  
No.19N2-9215

