

# CROFTS & ASSINDER

EST. 1875

STYLE GUIDE 2024





# CONTENTS

Mazak	4
The Collection	14
Grosvenor by Crofts & Assinder	24
Iron	29
Brass	44
Frequently Asked Questions	46
Finishes	49

## UNIQUELY BRITISH

You could spend a lifetime discovering unique British buildings, furniture and landmarks; we have. From the very beginning Crofts & Assinder has specialised in the design and manufacture of extraordinary cabinet handles and luxury fittings. In our 149 year history we have had the privilege of dressing furniture at London's Ritz and Waldorf hotels, Parliament House in Buenos Aires and ships of the Cunard and White Star Line.

Established in 1875 George Crofts and Frederick Assinder commenced trading as brass founders at the heart of British industry in Birmingham, England. To this day, Crofts & Assinder has stood the test of time and remains in the same hands of the families that created the company at the outset. We endeavour to make the ordinary extraordinary, combining a unique blend of our British heritage with timeless design and quality.

## Key

FC	Fixing Centres
L	Length
W/D	Width/Diameter
H/P	Height/Projection

All dimensions are approximate and given in millimetres (mm).



Corbusier in Brushed Satin Nickel. Shown on p9.

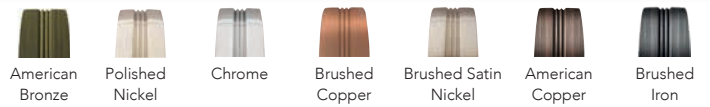


# MAZAK

## 1. MARLBOROUGH

Shown in American Bronze

		FC	L	W/D	H/P
HN-M-4148-128	Pull	128	172	15	30
HN-M-4148-160	Pull	160	204	15	30



## 2. SALCOMBE

Shown in American Bronze

		FC	L	W/D	H/P
HN-M-4260-96	Cup	96	124	40	26
KB-M-4261-34	Knob	-	-	34	30
KB-M-4261-38	Knob	-	-	38	34
HN-M-4269-160	Pull	160	178	16	27



Pull handle – Coming Summer 2024.



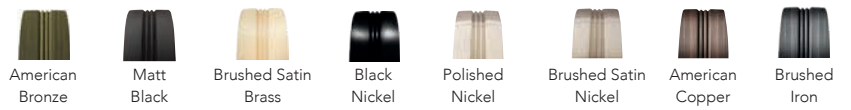
Salcombe in American Copper.



### 3. CALGARY

Shown in Brushed Satin Brass

		FC	L	W/D	H/P
KB-M-4163-35	Knob		-	35	29
KB-M-4163-40	Knob		-	40	37
HN-M-4160-128	Cup	128	155	31	29



Calgary shown in Matt Black.



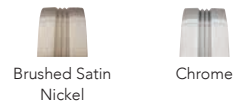
Calgary shown in Brushed Satin Nickel.



#### 4. GEORGIA

Shown in Chrome

		FC	L	W/D	H/P
KB-M-3840-32	Knob	-	32	32	28
HN-M-3841-128	Pull	128	177	24	28
HN-M-3843-96	Cup	96	145	41	27
HN-M-3843-128	Cup	128	193	41	27



Brushed Satin Nickel

Chrome

#### 5. KESWICK

Shown in American Bronze

		FC	L	W/D	H/P
KB-M-4257-34	Knob	-	-	34	25
KB-M-4257-38	Knob	-	-	38	28
HN-M-4258-128	Pull	128	147	25	28
HN-M-4258-160	Pull	160	179	25	28
HN-M-4259-96	Cup	96	128	36	27



American Bronze

American Copper

Brushed Satin Brass

Brushed Satin Nickel

Chrome

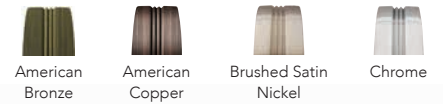




## 6. SHREWSBURY

Shown in Chrome

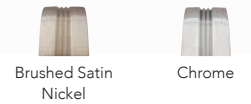
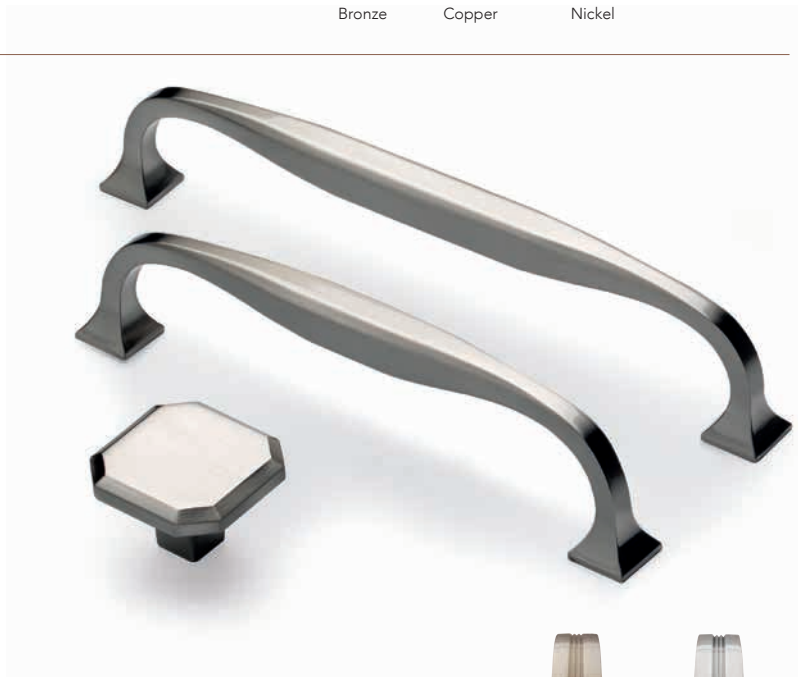
		FC	L	W/D	H/P
KB-M-3947	Knob	-	58	20	38
HN-M-3948-128	Pull	128	142	14	37
HN-M-3948-160	Pull	160	176	16	41



## 7. CORBUSIER

Shown in Brushed Satin Nickel

		FC	L	W/D	H/P
KB-M-3920-34	Knob	-	34	34	23
HN-M-3921-128	Pull	128	142	14	34
HN-M-3921-160	Pull	160	174	14	34



## 8. MICHIGAN

Shown in Matt Silver

		FC	L	W/D	H/P
HN-A-4190	Pull	128 160 192	242	8	28







## 9. MONMOUTH

Shown in Brushed Iron

		FC	L	W/D	H/P
KB-M-3976-32	Knob	-	-	32	27
KB-M-3976-38	Knob	-	-	38	32
HN-M-3978-64	Cup (Round)	64	104	48	30
HN-M-3981-64	Cup (Square)	64	104	48	30
HN-M-3977-128	Pull	128	193	20	26
HN-M-3977-160	Pull	160	232	20	26

\*Finish only available in round cup and knobs.



Matt Black



American Bronze



Black Nickel\*



Brushed Satin Brass



Polished Nickel



Iron Effect



Chrome



Brushed Copper



Brushed Satin Nickel



American Copper



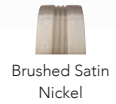
Brushed Iron



## 10. VINTAGE

Shown in Chrome

		FC	L	W/D	H/P
HN-M-3922-160	Pull	160	177	20	26



Brushed Satin Nickel



Chrome

## 11. RETRO

Shown in Chrome

		FC	L	W/D	H/P
HN-M-3923-160	Pull	160	171	20	26



Brushed Satin Nickel



Chrome



Retro shown in Brushed Satin Nickel.

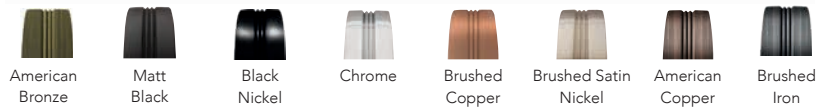


Malvern Handles in Black Nickel.

## 12. MALVERN

Shown in American Bronze

		FC	L	W/D	H/P
KB-M-3939-30	Knob	-	-	30	30
KB-M-3939-35	Knob	-	-	35	30
HN-M-3938-96	Pull	96	176	20	30
HN-M-3938-128	Pull	128	208	20	30





CROFTS & ASSINDER

EST. 1875

PRESENTS

# THE COLLECTION

*Years in the making, our new Collection range brings exquisite design and meticulous engineering together with practicality, to present an incredible offering, available to everyone.*

Simple. Elegant. Luxury.

Crofts & Assinder's take on the wonderful world of Scandinavian design. The tapered legs on this bewitching handle look effortlessly chic and ensure that the range stands out due to the inherent beauty found in the finer details.

Available in Brushed Satin Brass, Chrome and Matt Black.



### 13. STOCKHOLM

		FC	L	W/D	H/P
KB-M-4251-56	Knob	-	56	24	24
HN-M-4245-128	Pull	128	160	24	32





#### 14. DORCHESTER

		FC	L	W/D	H/P
KB-M-4247-38	Knob	-	-	38	31
HN-M-4246-160	Pull	160	214	21	34



Timeless charm emanates from this versatile range. The chunky bar handle and knob combination, with its smooth curvature, is well-suited to any interior – whether it's traditional or modern.

Available in American Bronze, American Copper, Brushed Satin Brass & Chrome.





A decagonal objet d'art, the Leamington presents a fresh look at the art-deco genre. With the classy and stylistic flair that this period was known for, the broad face and faceted edges combine to create an exquisite and enduring range.

Available in Brushed Satin Brass & Chrome.

## 15. LEAMINGTON

		FC	L	W/D	H/P
KB-M-4243-35	Knob	-	-	35	28
KB-M-4243-40	Knob	-	-	40	32
HN-M-4256-160	Pull	160	202	23	31





## 16. CHICAGO

Shown in Chrome, Brushed Chrome & Brushed Satin Nickel

		FC	L	W/D	H/P
HN-M-4176-160	Pull	160	170	22	31



Inspired by the Cloud Gate sculpture, the Chicago handle is flowing, smooth and sleek, creating an infinite liquid effect, which is both alluring and tactile.

Available in Brushed Chrome, Brushed Satin Nickel & Chrome.



Traditional with a contemporary twist, the Hamilton range looks at home in any setting.

The linear detailing and stepped edge come together to create a true modern classic.

Available in American Bronze, American Copper, Brushed Satin Brass, Brushed Satin Nickel & Polished Nickel.



17. HAMILTON

		FC	L	W/D	H/P
KB-M-4248-34	Knob	-	-	34	28
HN-M-4159-128	Cup	128	143	28	28





A fusion of industrial and utilitarian principles, the Banbury is both bold and humble. Its softened edges and unostentatious lines, ensure that it is simply sensational.

Available in American Bronze, Brushed Satin Brass & Chrome.

\*Length measurements include backplate.

## 18. BANBURY

		FC	L*	W/D	H/P
KB-M-4252-32	Knob	-	58	32	32
HN-M-4244-128	Pull	128	170	21	38





THE COLLECTION

CROFTS & ASSINDER

EST. 1875





# GROSVENOR BY CROFTS & ASSINDER

## 19. ARUNDEL Shown in Chrome

		FC	L	W/D	H/P
HN-M-4200-192	Pull	192	205	14	30



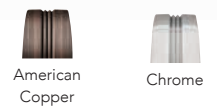
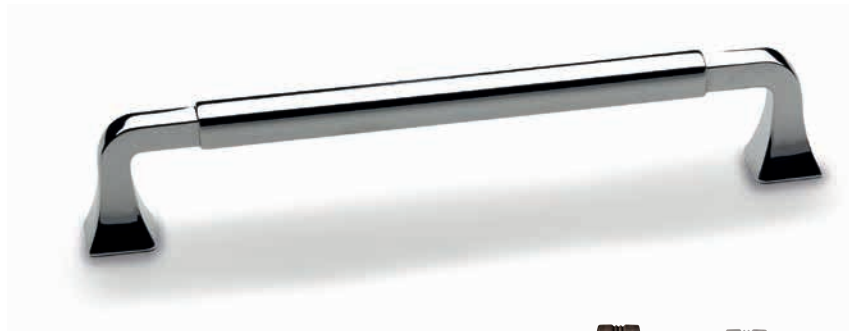
## 20. KEW Shown in Brushed Gold

		FC	L	W/D	H/P
HN-M-4215-160	Pull	160	190	25.5	25.8



## 21. STRATFORD Shown in Chrome

		FC	L	W/D	H/P
HN-M-4216-160	Pull	160	177	17	32.5







Kew shown in Brushed Gold.



Midhurst in American Copper.

22. MIDHURST  
Shown in American Copper

		FC	L	W/D	H/P
HN-M-4217-160	Pull	160	177	20	20

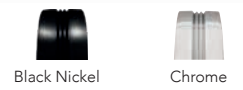
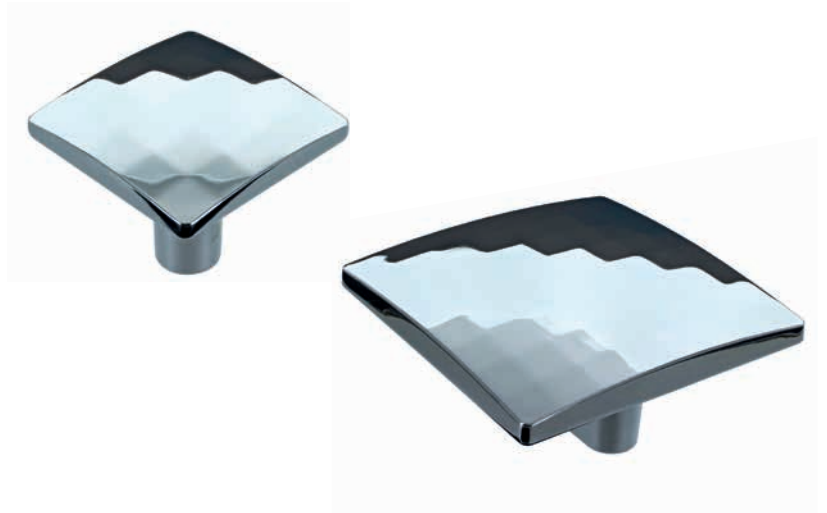




### 23. MOSAIC

Shown in Chrome

		FC	L	W/D	H/P
KB-M-4192-30	Knob	-	-	30	35
KB-M-4192-60	Knob	32	-	60	35



### 24. CHICHESTER

Shown in Matt Black

		FC	L	W/D	H/P
HN-M-4218-160	Pull	160	178	18	28



### 25. ALNWICK

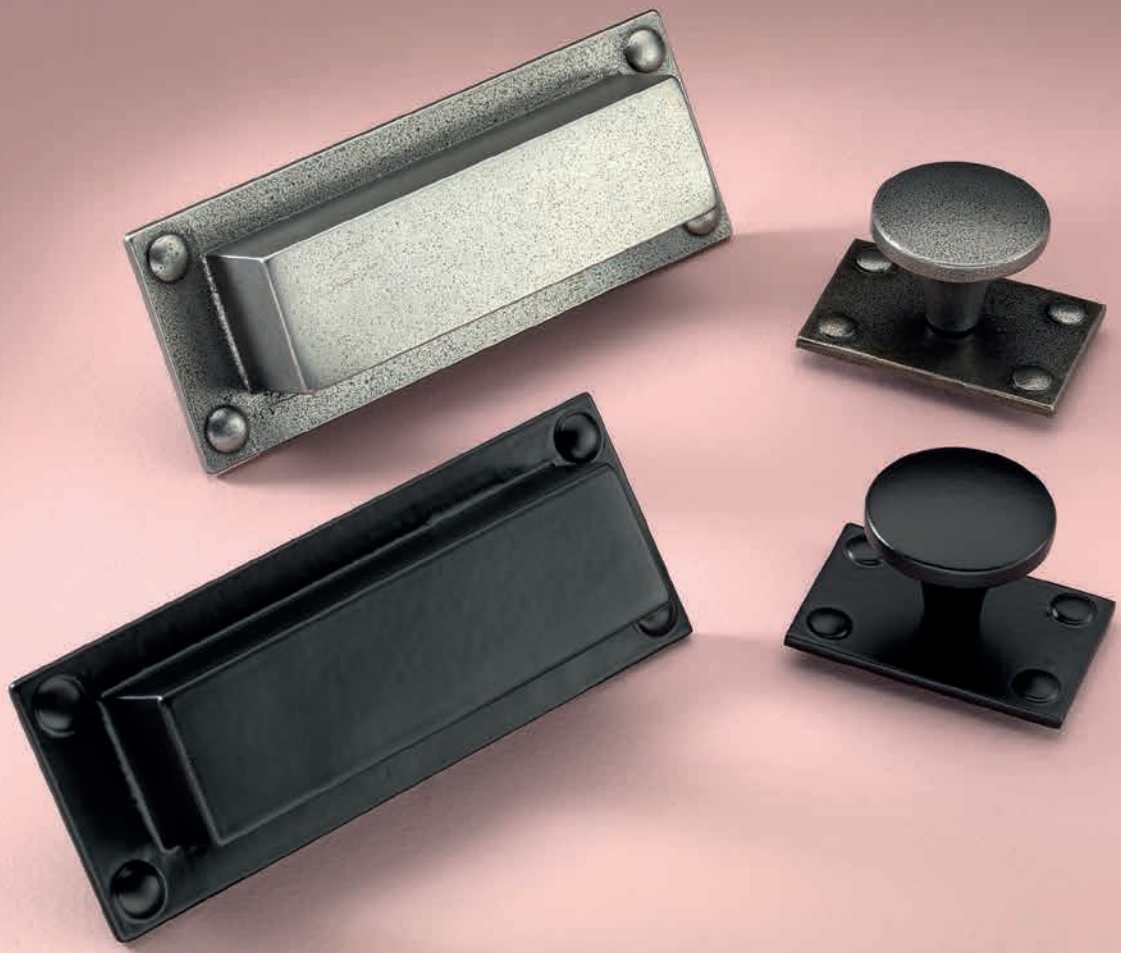
Shown in Black Nickel

		FC	L	W/D	H/P
HN-M-4199-160	Pull	160	170	12	34





Alnwick shown in Black Nickel. See page 27.



Montreal shown in Matt Black and Iron.

# IRON

## 26. MONTREAL

Shown in Iron

		FC	L	W/D	H/P
KB-I-4165-38	Knob	-	58	38	33
HN-I-4164-96	Cup	96	138	54	29



Matt Black



Iron



## 27. WINCHESTER

Shown in Iron

		FC	L	W/D	H
KB-I-3983-34	Knob	-	-	34	28
KB-I-3983-38	Knob	-	-	38	30
HN-I-3984-128	Pull	128	143	15	36
HN-I-3984-160	Pull	160	175	15	36



Iron

## 28. COSFORD

Shown in Iron

		FC	L	W/D	H/P
HN-I-4194-128	Pull	128	141	8	43
HN-I-4194-160	Pull	160	173	8	43



Iron



Cosford shown in Iron.



Kingston shown in Iron.



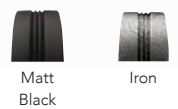


Kingston shown in powder coat finishes. Available on request. MOQs apply.

## 29. KINGSTON

Shown in Iron

		FC	L	W/D	H/P
HN-I-4187-128	Pull	128	160	16	46
HN-I-4187-160	Pull	160	193	16	46





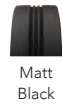
Windsor shown in Iron. See page 37.



### 30. BRECON

Shown in Iron

		FC	L	W/D	H/P
KB-I-3624-35-KO	Knob	-	-	35	33
HN-I-3925-64	Cup	64	104	48	30
HN-I-3924-128	Pull	128	193	20	26



Matt Black



Iron

### 31. LUDLOW

Shown in Iron

		FC	L	W/D	H/P
KB-I-3949	Knob	-	58	20	38
HN-I-3950-128	Pull	128	141	12	36
HN-I-3950-160	Pull	160	176	16	40
HN-I-3950-192	Pull	192	210	17	46



Iron

### 32. BUXTON

Shown in Iron

		FC	L	W/D	H/P
KB-I-3910-34	Knob	0	0	34	40



Iron



### 33. CHAMBÉRY

Shown in Iron

		FC	L	W/D	H/P
HN-I-4099-128	Pull	128	174	16	25
HN-I-4099-160	Pull	160	206	16	25



### 34. ANNECY

Shown in Iron

		FC	L	W/D	H/P
HN-I-4098-128	Pull	128	164	20	25
HN-I-4098-160	Pull	160	196	20	25



Chambéry shown in Iron.



### 35. MONTROSE

Shown in Iron

		FC	L	W/D	H/P
HN-I-3887-128	Pull	128	149	18	39
KB-I-3885-32	Knob	-	-	32	35



Iron

### 36. WINDSOR

Shown in Iron

		FC	L	W/D	H
KB-I-3951-34	Knob	-	-	34	25
HN-I-3952-128	Pull	128	151	25	28
HN-I-3952-160	Pull	160	185	25	28



Matt Black



Iron

### 37. GEORGE

Shown in Iron

		FC	L	W/D	H/P
KB-I-3849-32	Knob	-	32	32	28
HN-I-3851-96	Cup	96	145	27	41
HN-I-3850-128	Pull	128	177	24	28
HN-I-3850-224	Pull	224	268	24	28



Iron



### 38. MAYFAIR

Shown in Iron

		FC	L	W/D	H/P
HN-I-3673-96	Pull	96	132	18	26
HN-I-3673-128	Pull	128	164	18	26
HN-I-3673-160	Pull	160	196	18	26
HN-I-3673-192	Pull	192	228	18	26
HN-I-3673-224	Pull	224	260	18	26



### 39. CHELTENHAM

Shown in Iron

		FC	L	W/D	H/P
HN-I-4096-128	Pull	128	152	16	25
HN-I-4096-160	Pull	160	184	16	25



### 40. ARRAN

Shown in Iron

		FC	L	W/D	H/P
HN-I-3744-96	Pull	96	176	20	30
HN-I-3744-128	Pull	128	208	20	30
HN-I-3744-160	Pull	160	240	20	30





Arran shown in Iron.



## 41. BORDEAUX

Shown in Iron

		FC	L	W/D	H/P
KB-I-3624-35	Knob	-	-	35	37
KB-I-3624-48	Knob	-	-	48	39
HN-I-3626-128	Pull	128	153	25	40
KB-I-3625-90	T-Bar	-	90	25	42



## 42. MOSELEY

Shown in Iron

		FC	L	W/D	H/P
KB-I-3810-36	Knob	-	36	13	29
KB-I-3810-56	Knob	-	56	20	38



## 43. NOTTINGHAM

Shown in Iron

		FC	L	W/D	H/P
KB-I-3757-30	Knob	-	-	30	30
KB-I-3757-40	Knob	-	-	40	41







#### 44. HADLEY

Shown in Iron

		FC	L	W/D	H/P
HN-I-3601-128	Pull	128	136	17	26



Iron

#### 45. TEXAS

Shown in Iron

		FC	L	W/D	H/P
KB-I-3689-34	Knob	-	-	34	25
KB-I-3689-40	Knob	-	-	40	28



Iron



## 46. WARWICK

Shown in Iron

			Ø	┌	W/D	H/P
55(a)	HN-I-3175-128	Pull	128	144	27	18
55(b)	HN-I-3174-128	Pull	128	146	15	28
55(c)	HN-I-3078-96	Pull	96	150	21	36
55(d)	HN-I-3173-64	Cup	64	102	44	23
55(d)	HN-I-3172-64	Cup (mottled)	64	100	41	23
55(e)	KB-I-3379-34	Knob	-	-	34	29
55(e)	KB-I-3379-38	Knob	-	-	38	31
55(f)	BP-I-3380-22	Backplate	-	-	22	4
55(f)	BP-I-3380-25	Backplate	-	-	25	5
55(g)	KB-I-3159	Knob	-	-	28	40
55(h)	KB-I-2866-34	Knob	-	-	34	29
55(h)	KB-I-2866-38	Knob	-	-	38	29
55(i)	KB-I-3257-35	Knob	-	35	35	24
55(j)	KB-I-3161	Knob	-	40	20	30
55(k)	BP-I-3158	Backplate	-	-	32	4



55(a)



55(b)



55(c)



55(d)



55(e)



55(f)



55(h)

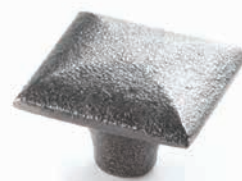


55(g)

55(j)



55(k)



55(i)



Iron



Warwick shown in Iron.



# BRASS

## 47. AMERSHAM

Shown in Polished Brass Lacquer

		FC	L	W/D	H/P
HN-B-3980-53	Cup	49	53	29	17
HN-B-3980-98	Cup	94	98	36	23

Front facing screws included as standard.



Chrome



Polished Brass  
Lacquer

## 48. WEXFORD

Shown in Nickel Pewter

		FC	L	W/D	H/P
HN-B-4463	Pull	64	96	29	32
KB-B-4384-30	Knob	-	-	30	27
KB-B-4384-35	Knob	-	-	35	34



Nickel Pewter



# FREQUENTLY ASKED QUESTIONS

## How do I order?

Please phone, fax or e-mail our Birmingham Headquarters:

**t** +44 (0) 121 622 1074

**f** +44 (0) 121 622 5718

**e** general@crofts.co.uk

## What are our hours of business?

Monday – Thursday 08:00 – 16:30

Friday 08:15 – 12:30

## How do we interpret your dimensional information?

The majority of our handles are in metric sizes, with dimensions given in millimetres, however we do offer some handles in imperial sizes for our overseas markets with centre fixing dimensions of 3", 8", 12" and 18". Our double fixing handles start from centres of 32mm with additional incremental sizes of 32mm being added where applicable. The majority of our products are tapped with M4 threads with a minimum depth of 4mm. A few of our larger handles may be tapped with M6 threads. Please ask our Sales Team for confirmation when ordering. Dimensions of cast iron and ceramic hardware may vary slightly due to the manufacturing process.

## How are your products packed?

We aim to supply the majority of our handles packed in poly-bags complete with an M4 x 25mm screw and an M4 x 45mm snap off screw per fixing hole. Please note not all handles are packed to this specification. Box quantities range from 10 – 50 pieces depending upon the size of the product. For non-standard packaging and alternative screw lengths, please contact our Sales Team on + 44 (0) 121 622 1074.

## How do we fit your products?

Please hand-tighten the products using the screws provided and avoid using power tools for installation.

### Product Care Instructions

To prolong the life of this product we recommend cleaning when required using lukewarm water on a damp, well wrung-out lint free cloth. Also, the use of a soft-bristled toothbrush can be used for the removal of dirt trapped in the knurling or grooves. Once clean, ensure to thoroughly dry with a soft cloth, paying particular attention to the base of the stem of the product. A light coating of natural wax will help seal any chips or scratches.

We strongly advise never to use commercial chemical or abrasive cleaning products on any Crofts & Assinder products, including antibacterial cleaners. These will remove the protective coating and the product may become damaged, possibly changing the appearance as a result. Also, little chips or scratches in the lacquer will allow the air to tarnish the metal underneath over time. So particular care is required by following these instructions, otherwise the 12-month warranty may become invalid.



### **How can I hear about new developments in your Company?**

We have a team of Regional Sales Managers who regularly make personal visits. Please call the Sales Office on + 44 (0) 121 622 1074 to find out your contact.

### **What are your lead times?**

Lead times vary from region to region and by product to product. Please contact our Sales Team on + 44 (0) 121 622 1074 to verify stock availability and lead times.

### **Can we reproduce C&A product images?**

All copyright and intellectual property rights are the property of Crofts & Assinder Ltd. No persons can reproduce any part of this catalogue by any means, electronic or mechanical without prior written permission from the Company.

### **What are your Terms & Conditions?**

Our Terms and Conditions may be obtained from our Sales Team and they accompany all account application forms.

### **Error & Omissions Excepted**

Due to our policy of continued product development, we reserve the right to alter materials and specifications without prior notice. Please contact our Sales Team for further information.

Although every care has been taken to ensure the accuracy of the information in this catalogue, we cannot accept responsibility for omissions or inaccuracies.

### **Non Standard Finishes**

Standard finishes are shown against each product displayed.

In cases where non standard finishes are requested, MOQ's and longer lead times may apply as these will be produced on a bespoke basis. Due to the nature of our products, many of which are hand finished, there may be some variations in finish from batch to batch.



# ADDITIONAL NOTES

## Colour Reproduction

Due to photographic and printing processes some colours may not be a true representation of the product. Please see actual sample for colour.

## Changes & Modifications

From time to time, as part of our continual product improvement program, Crofts & Assinder may need to modify tooling or design aspects. During this process small changes to the product may be applied. Crofts & Assinder reserves the right to make these changes without prior notification.

## Intellectual Property

We protect and defend our intellectual property rights globally, particularly by means of Design Patents in the USA and Registered Designs in the UK & Europe.

Crofts & Assinder is an active member of ACID, a hard hitting action group committed to combating copyright theft. Please visit [www.acid.co.uk](http://www.acid.co.uk) for more details.



## Acknowledgements

The authors and publishers are grateful for the kind permission of the following copyright owners to reproduce their images throughout this catalogue on the pages indicated:

P4 – Higham Furniture Ltd

P7 & P39 – Mereway Kitchens

P10 – David L Douglas

P2, P12, P19 & P34 – The Rigid Kitchen Company

P23 & P25 Omega PLC

P13 & P28 – Sharps Bedrooms Ltd

P32 – Hallwood Furniture

P50 – The Symphony Group PLC

All remaining lifestyle photography provided by Ross Vincent Photography.

Design [www.marshgraphicdesign.com](http://www.marshgraphicdesign.com)





# FINISHES

The table below illustrates the range of finishes that can be applied to specific base materials. Standard finishes are highlighted throughout the catalogue next to each product. Please note that for non-standard finishes minimum order quantities and longer lead times may apply.

	Finish	Iron	Zamak	Brass	Aluminium
	American Bronze (AB)		√		
	American Copper (AC)		√		
	Antique Finish (AF)			√	
	Black Nickel		√	√	
	Brushed Chrome		√		
	Brushed Copper (BC)		√		√
	Brushed Gold		√		
	Brushed Iron				
	Brushed Pink		√		
	Brushed Satin Brass (BSB)		√	√	
	Brushed Satin Nickel (BSN)		√	√	√
	Chrome (C)		√	√	√
	Cracked Cream Ceramic & English Bronze (CKC/E)		√		
	Cracked White Ceramic & Nickel Pewter (CKW/NP)		√		
	English Bronze (E)		√		
	Florentine Bronze (FB)	√			
	Grey				√
	Iron Effect / Lacquer (I)	√	√		
	Matt Black	√	√	√	√
	Matt Gold				√
	Matt Pink				√
	Matt Silver				√
	Nickel Pewter (NP)		√		
	Pewter (P)		√		
	Polished Brass Lacquer (PBL)			√	
	Polished Nickel (PN)		√	√	
	Powder Coat Oil Rubbed Bronze (PC-ORB)	√	√		
	Powder Coat Rust (PR)	√	√		
	Rose Gold		√	√	
	White	√	√	√	
	White Ceramic & Stainless Steel (W/SS)		√		





# CROFTS & ASSINDER

EST. 1875

Uniquely British Design

T : +44 (0) 121 622 1074  
E : [general@crofts.co.uk](mailto:general@crofts.co.uk)  
W : [www.crofts.co.uk](http://www.crofts.co.uk)