

✓ Removable and interchangeable, unlike panels fixed with adhesive

✓ More secure than panels hung on split battens or cleats

✓ Faster to install than other secret fixing methods



THE QUEEN'S AWARDS
FOR ENTERPRISE:
INNOVATION
2020

The button-fix range



Type 1

- ✓ Connects panels face-to-face with a 3mm or 8mm gap
- ✓ Drop down or sideways engagement
- ✓ Ideal for acoustic, wall and ceiling panels



Type 1 Flush

- ✓ Connects panels face-to-face with no gap
- ✓ Drop down or sideways engagement
- ✓ Ideal for furniture assembly



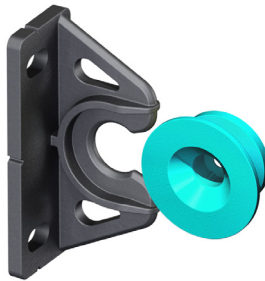
Type 1 Bonded

- ✓ For bonding to panels of any thickness
- ✓ Drop down or sideways engagement
- ✓ Ideal for signage and exhibition displays



Type 1 Metal

- ✓ High-performance fastener for use on fire-rated panels
- ✓ Drop down or sideways engagement
- ✓ Ideal for marine and other transport interiors



Type 2

- ✓ Connects panels at 90° or to a frame
- ✓ Push-on engagement
- ✓ Ideal for service access such as bath panels



Type 3

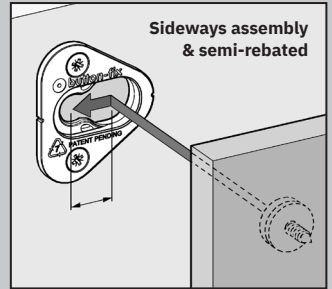
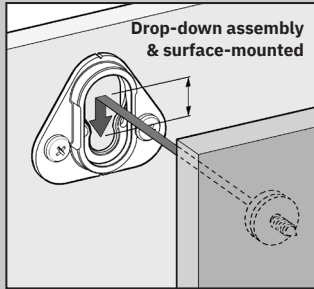
- ✓ Connects panels face-to-face with a 3mm or 8mm gap
- ✓ Strong push-on/pull-off engagement
- ✓ Ideal for acoustic, wall and ceiling panels

How button-fix works

1 Type 1 fixes

All Type 1 Fixes are robust and secure panel connectors for walls, ceilings and furniture applications.

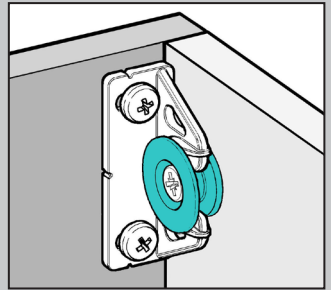
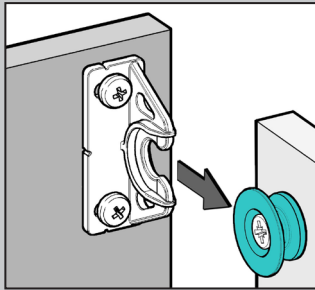
Engage the Buttons in the Fixes and slide the panel by 15mm, until Button-fix goes 'click'. They can be orientated to suit your application and rebated to save space too.



2 Type 2 fix

The Type 2 Fix connects panels at 90°. It is ideal for furniture construction or mounting removable bath panels.

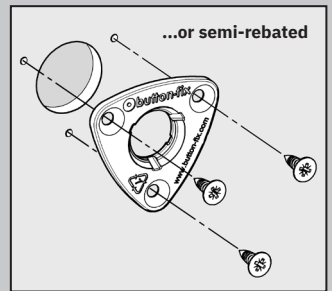
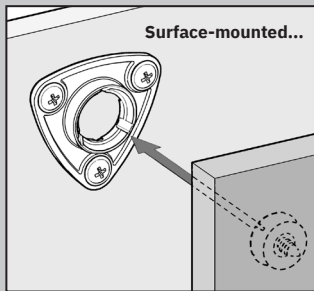
Because the Type 2 Fix engages with a straight push, no clearance above or at the side of the panel is required.



3 Type 3 fix

The Type 3 Fix connects parallel panels with a push-on/pull-off engagement. It is ideal for applications with no clearance around the removable panel.

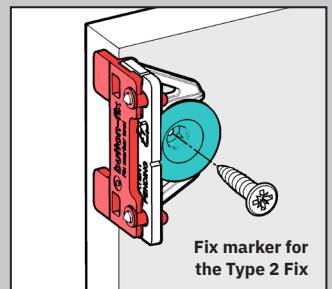
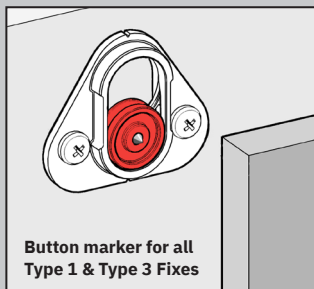
Because the panel-to-panel gap is the same, Type 1 and Type 3 Fixes can happily work together.



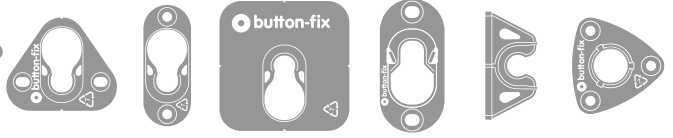
Marker accessories

Button and Fix markers quickly and accurately align the Button-fix installation, without any need to measure. The marker points leave indents in the mating panel surface, to indicate where the fittings go.

Visit our website to see the full range of accessories.



Which button-fix?



Features of the Fix	Type 1	Type 1 Flush	Type 1 Bonded	Type 1 Metal	Type 2	Type 3
Material	Nylon PA	Nylon PA6	ABS	Zinc alloy	Nylon PA66	PBT
Connects face-to-face	●	●	●	●		●
Connects at 90°					●	
Drop down/sideways engagement	●	●	●	●		
Push-on engagement					●	●
For use on fire-retardant panels				●		
Surface-mounted	●	●	●	●	●	●
Semi-rebated/recessed	●		●	●		●
Fully rebated/recessed		●				
Attached with screws	●	●		●	●	●
Bonded			●			
Minimum panel thickness	10mm (1)	18mm (2)	no restriction	10mm (1)	10mm (1)	10mm
Marker accessories	●	●	●	●	●	●
Router Multijig	●	●	●	●		
Multilingual instructions on the web	●	●	●	●	●	●
Independent load test reports (3)	●	●	●	●	●	●
2d DXF downloads on the website	●	●	●	●	●	●
3d CAD downloads on the website	●	●	●	●	●	●

- (1) 10mm minimum with Varianta/Euro screws; 15mm minimum with wood screws
- (2) Minimum panel thickness 28mm when rebating into the edge of the panel
- (3) Type 1 Bonded test reports for specific adhesive/substrate combinations only

Visit our website for more information, helpful videos and details of where to buy