

Inspire

Elevate Spaces with
Premium Architectural Tiles





Welcome to Inspire!

In this edition we feature five of our latest tile ranges launched at this years London Design Festival. Each collection takes its inspiration from the latest trends in interior design, encompassing cement-like textures, striking 3D patterns, artisanal craftsmanship, and timeless marble tones.

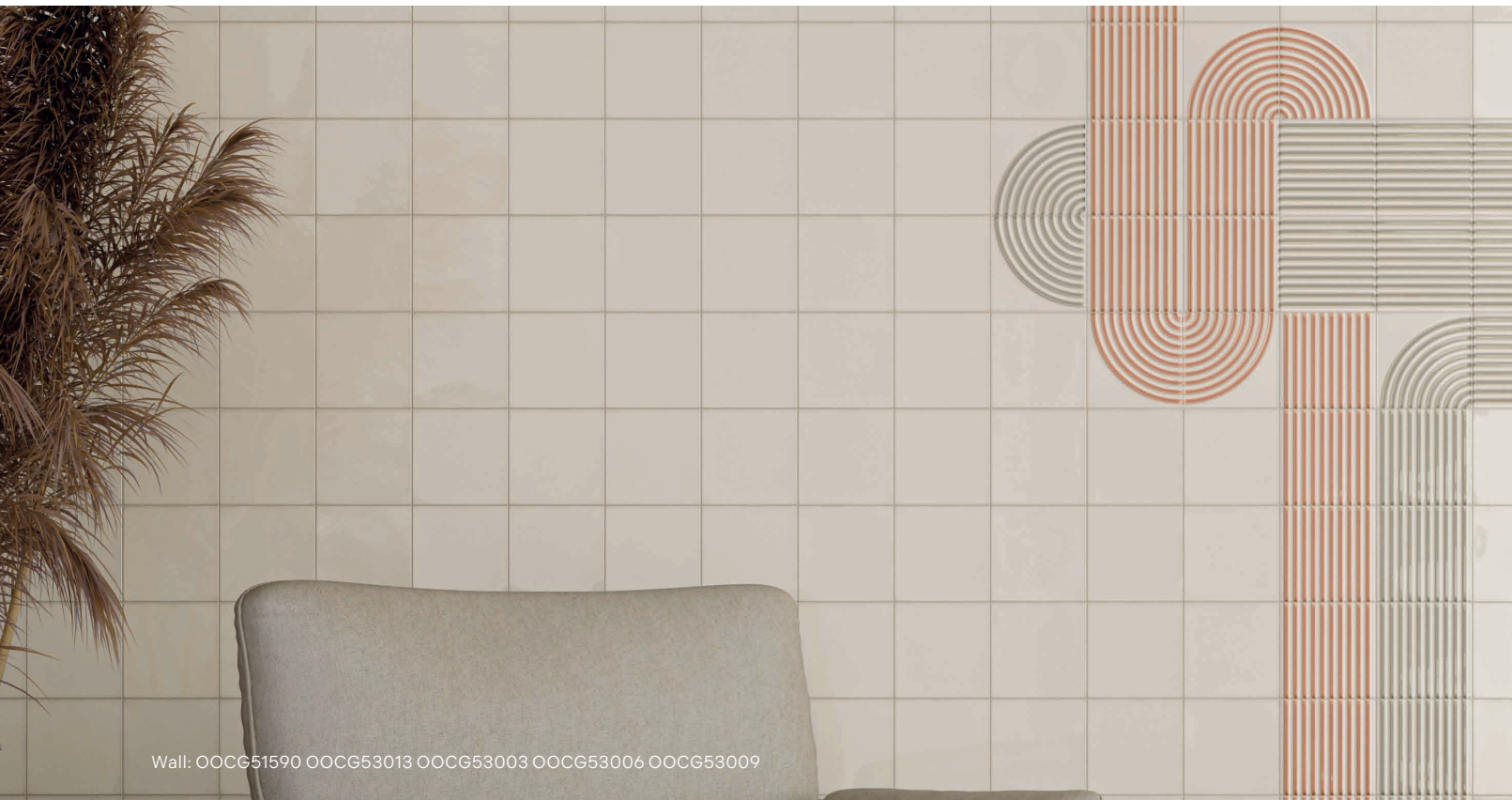


Inspire Contents

Mikro	04
Kelemi	10
Hermatine	16
Bardot 2.0	22
Kota_01	28
Discover our London Studios	34



Material: **Ceramic** | Appearance: **Monocolour** | Application: **Walls**

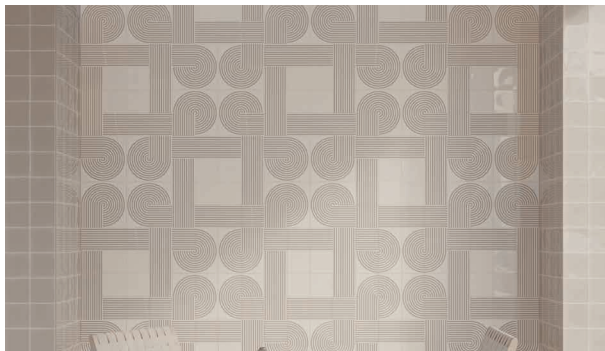


Wall: OOCG51590 OOCG53013 OOCG53003 OOCG53006 OOCG53009



Mikro

Mikro offers full customisation and the ability to create distinct pattern combinations. It comes in a versatile neutral colour range, both in solid shades and coordinating decorative designs. Perfect for interior wall installations.





Wall: OOCG51592 OOCG51596 OOCG53001

Mikro

Gloss



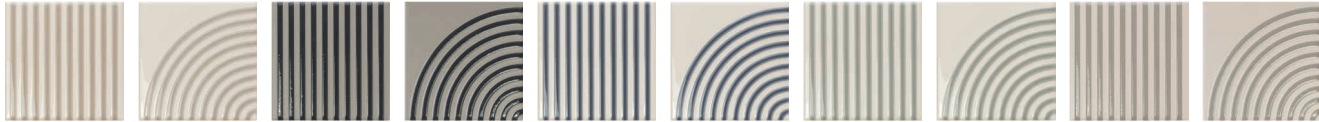
OOCG51590 OOCG51591 OOCG51593 OOCG51594 OOCG51597

Matt



OOCG51595 OOCG51596 OOCG51592

Gloss

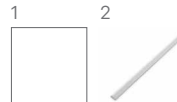


OOCG53000 OOCG53007 OOCG53001 OOCG53012 OOCG53002 OOCG53008 OOCG53003 OOCG53009 OOCG53004 OOCG53010



OOCG53005 OOCG53011 OOCG53006 OOCG53013

Sizes (mm)		> <	Finishes	
1	125x125	8.5mm	Gloss	Matt
2	8x125 EDGE	8.5mm	Gloss	Matt

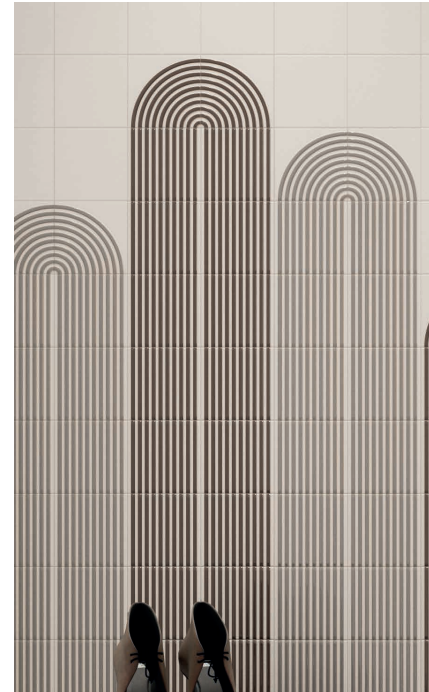


Swatch colours may vary, samples should be requested.



Above
Wall: OOCG51590 OOCG51594 OOCG53003 OOCG53009

Right
Wall: OOCG51595 OOCG53004 OOCG53005 OOCG53010 OOCG53011





Material: **Porcelain** | Appearance: **Cement/ Concrete** | Application: **Walls and Floors**

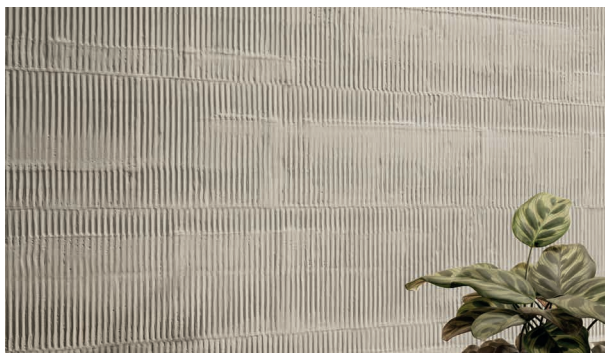


Floor: PEBF48777



Kelemi

Inspired by hand-trowelled cement resin, Kelemi introduces a collection of nine densely pigmented cement-like shades that exude a remarkably realistic appearance. Kelemi perfectly balances minimalism and decoration with its three-dimensional textures and wallpaper effect decors.





Kelemi



PEBF48774

PEBF48775

PEBF48776

PEBF48777

PEBF48778

PEBF48779

PEBF48780

PEBF48781

PEBF48782



PEBF48774T1

PEBF48775T1

PEBF48776T1

PEBF48777T1

PEBF48778T1

PEBF48779T1

PEBF48780T1

PEBF48781T1

PEBF48782T1



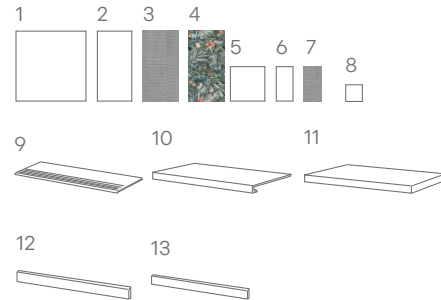
PEBF48783

	Sizes (mm)	> <	Finishes
1	1200x1200	9.5mm	Nat (R10) PTV ≥36 -
2	600x1200	9.5mm	Nat (R10) PTV ≥36 AS (R11/B)
3	600x1200 T1	9.5mm	Nat (R10) PTV ≥36 -
4	600x1200 DECOR	9.5mm	Nat (R10) PTV ≥36 -
5	600x600	9.5mm	Nat (R10) PTV ≥36 -
6	300x600	9.5mm	Nat (R10) PTV ≥36 -
7	300x600 T1*	9.5mm	Nat (R10) PTV ≥36 -
8	48x48 MOS on 300x300 MESH	9.5mm	Nat (R10) PTV ≥36 -
9	330x1200 ST1	9.5mm	Nat (R10) PTV ≥36 -
10	330x1200x32x32 ST2	9.5mm	Nat (R10) PTV ≥36 -
11	330x1200x32x32 CORNER	9.5mm	Nat (R10) PTV ≥36 -
12	46x1200 SK	9.5mm	Nat (R10) PTV ≥36 -
13	70x600 SK	9.5mm	Nat (R10) PTV ≥36 -

*300x600 T1 is only available in PEBF48774, PEBF48775, PEBF48776, PEBF48777, PEBF48780 and PEBF48781

PTV≥36 wet with slider 96

PTV values can vary batch to batch, please contact for advice. Swatch colours may vary, samples should be requested.





Above
Wall: PEBF48781T1
Floor: PEBF48781

Right
Wall: PEBF48778 PEBF48783
Floor: PEBF48774





Material: **Porcelain** | Appearance: **Marble** | Application: **Walls and Floors**



Wall: FVCA52412
Floor: FVCA52409



Hermatine

Hermatine is a modern collection designed for both wall and floor applications, featuring colours, textures, and veining reminiscent of natural travertine marble. Yet, it boasts the durability of porcelain, ensuring long-lasting quality.





Wall: FVCA52413
Floor: FVCA52413

Hermatine



FVCA52408

FVCA52409

FVCA52410

FVCA52411

FVCA52412

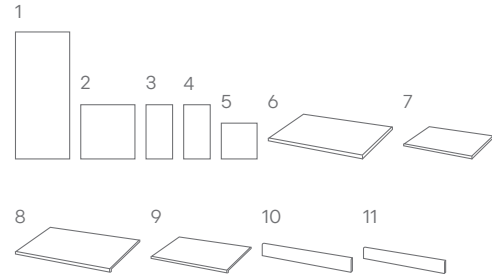
FVCA52413

FVCA52411T1

FVCA52412T1

FVCA52413T1

	Sizes (mm)	> <	Finishes	FVCA52408	FVCA52409	FVCA52410	FVCA52411	FVCA52412	FVCA52413
1	1200x2780	6.5mm	Nat (R10) PTV ≥36						
2	1200x1200	6.5mm	Nat (R10) PTV ≥36	■	■	■			
3	600x1200	8.5mm	Nat (R10) PTV ≥36				■	■	■
4	600x1200 T1 DEC	8.5mm	Nat (R10) PTV ≥36				■	■	■
5	800x800	8.5mm	Nat (R10) PTV ≥36	■	■	■			
6	330x1200x50 ST1	6.5/8.5mm	Nat (R10) PTV ≥36				■	■	■
7	400x800x50 ST1	8.5mm	Nat (R10) PTV ≥36	■	■	■			
8	330x1200x50 ST2	6.5/8.5mm	Nat (R10) PTV ≥36				■	■	■
9	400x800x50 ST2	8.5mm	Nat (R10) PTV ≥36	■	■	■			
10	80x1200 SK	6.5/8.5mm	Nat (R10) PTV ≥36				■	■	■
11	80x800 SK	8.5mm	Nat (R10) PTV ≥36	■	■	■			



PTV ≥36 wet with slider 96

PTV values can vary batch to batch, please contact for advice. Swatch colours may vary, samples should be requested.



Above
Wall: FVCA52411 FVCA52411T1
Floor: FVCA52408

Right
Wall: FVCA52413T1
Floor: FVCA52413

Inspire | 20





Material: **Ceramic** | Appearance: **Monocolour** | Application: **Walls**



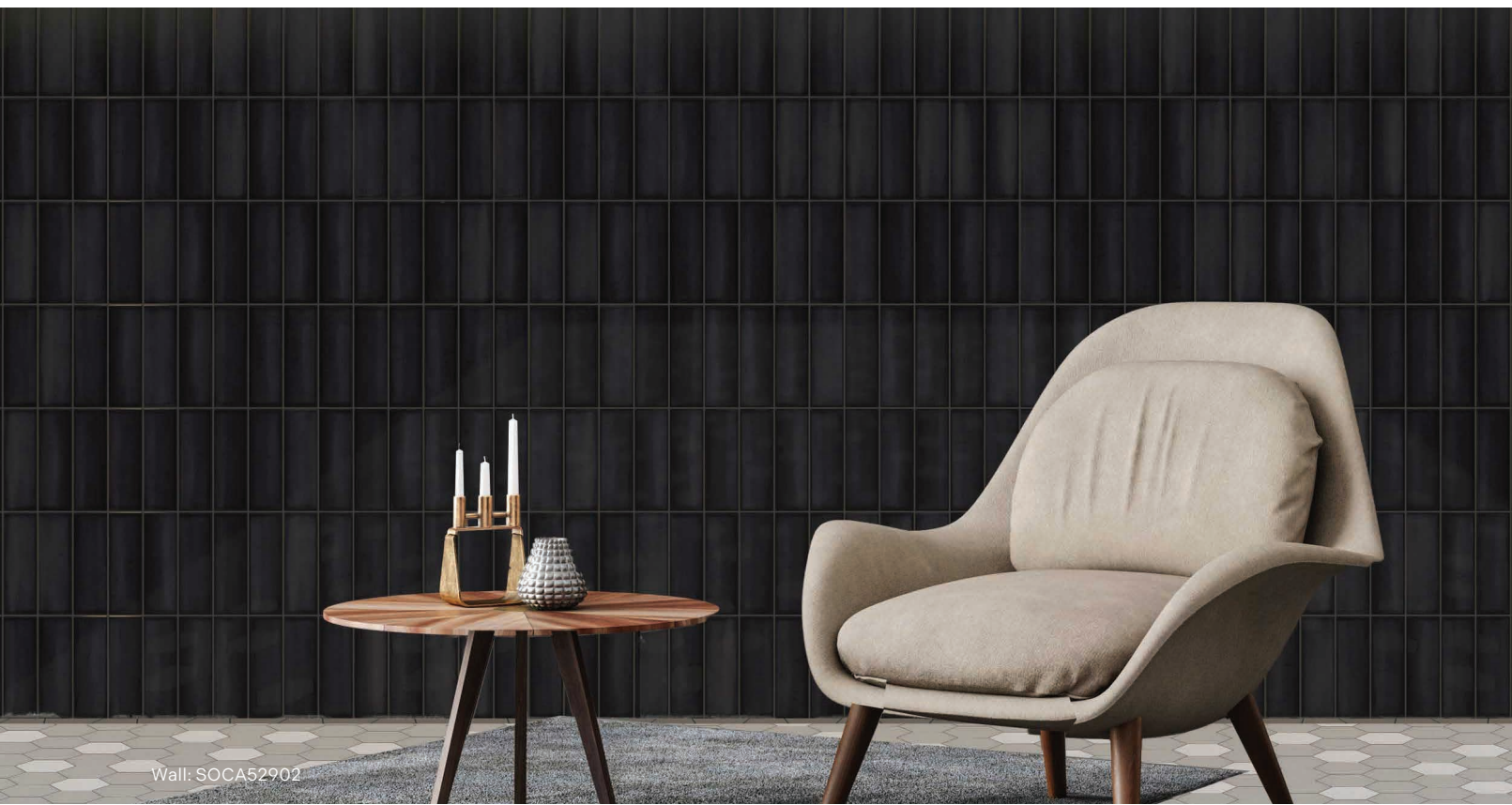
Wall: SOCA52901



Bardot 2.0

Utilise the distinct and tactile attributes of the Bardot 2.0 ceramic tile series to craft a captivating and contemporary artisan ambiance within indoor spaces. Presented in a 65x200mm format, these tiles showcase a glossy, handcrafted surface. Bardot 2.0 is perfectly suited for internal wall installations.





Wall: SOCA52902

Bardot 2.0



SOCA52900



SOCA52901



SOCA52902



SOCA52903



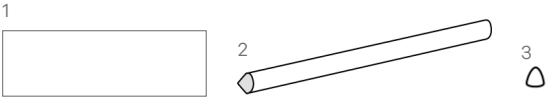
SOCA52904



SOCA52905



SOCA52906



	Sizes (mm)	> <	Finishes
1	65x200	9mm	Gloss
2	11x400 QR	9mm	Gloss
3	11x11 CORNER	9mm	Gloss

Swatch colours may vary, samples should be requested.



Above
Wall: SOCA52904

Right
Wall: SOCA52906

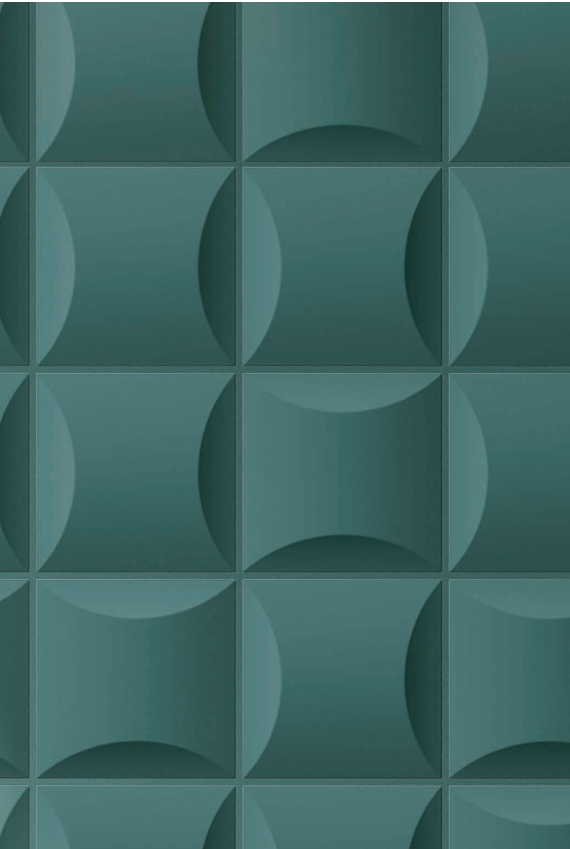




Material: **Ceramic** | Appearance: **Monocolour** | Application: **Walls**



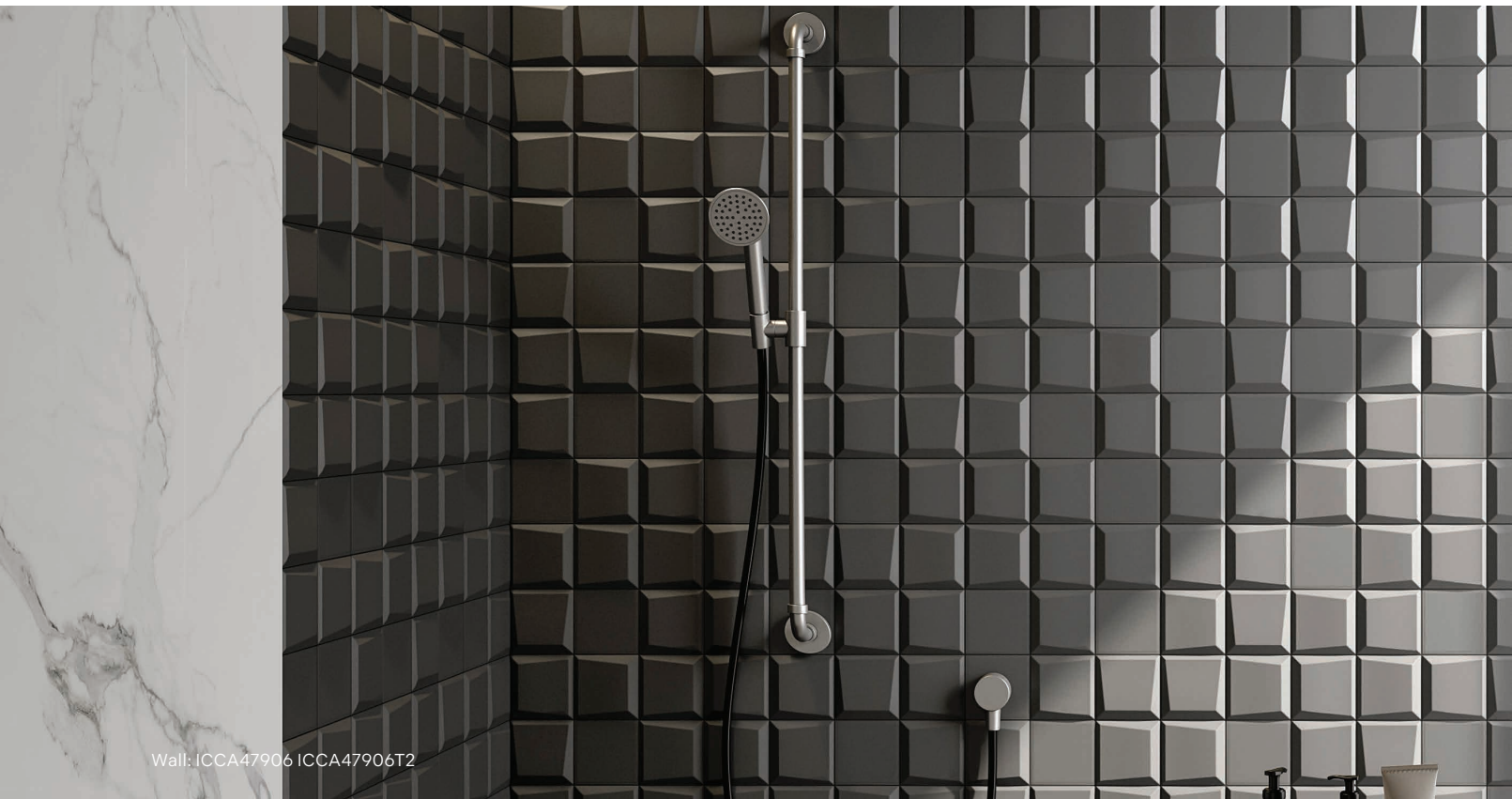
Wall: ICCA47908T1



Kota_01

Kota_01 offers wall tiles measuring 100x100mm that are characterised by three distinct structures. With a choice of seven hues and two surface textures—matt and gloss—you have the flexibility to blend colours and finishes to enhance the interplay of light and the resulting 3D visual effects.





Wall: ICCA47906 ICCA47906T2

Kota_01 Matt

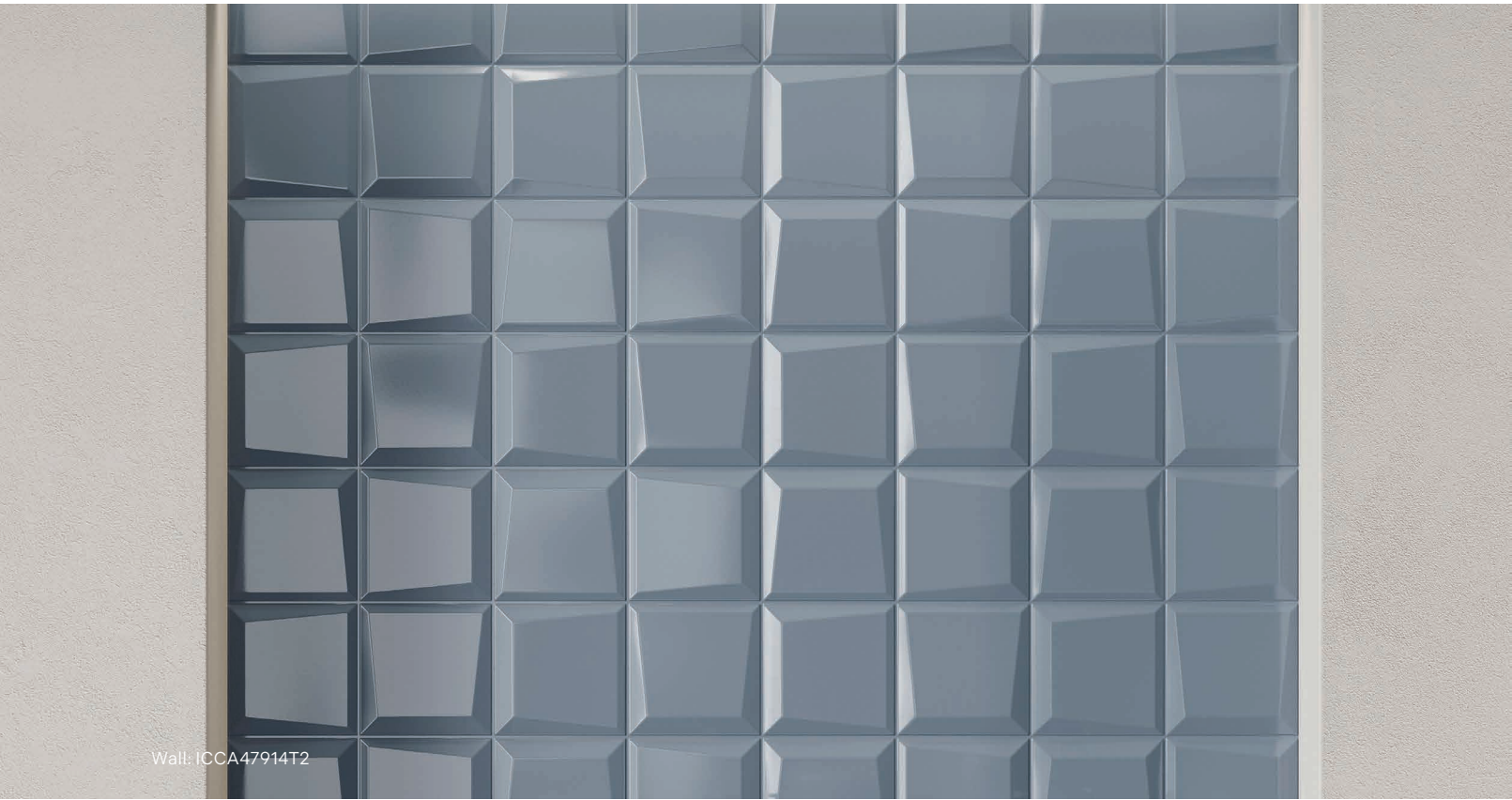


	Sizes (mm)	> <	Finish
1	100x100	9mm	Matt
2	100x100 T1	15mm	Matt
3	100x100 T2	15mm	Matt
4	12x200 JOLLY	9mm	Matt

1

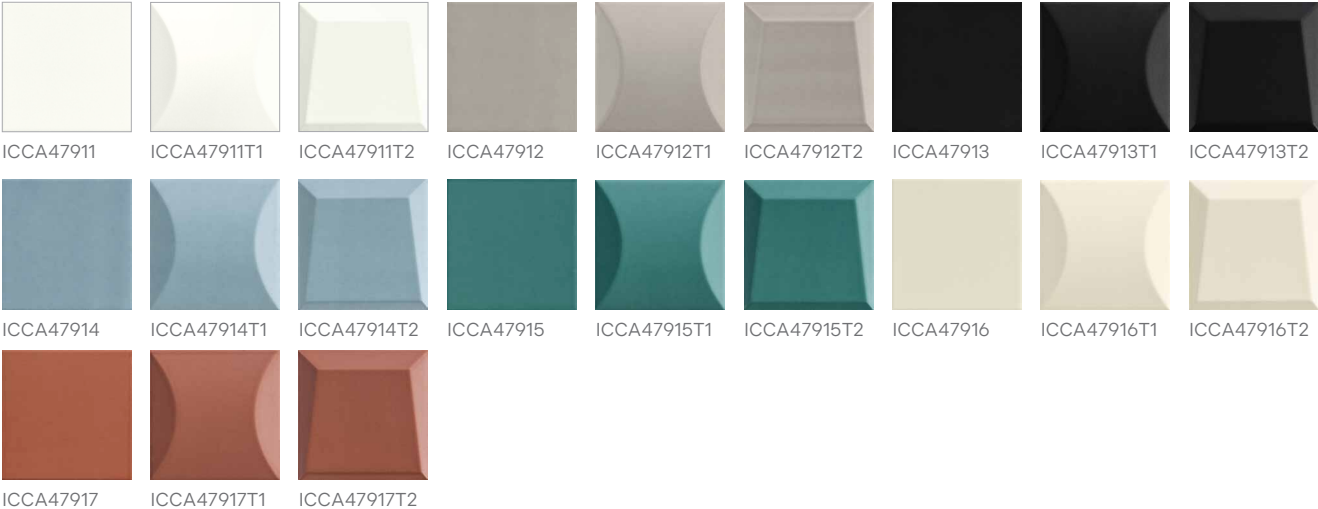


Swatch colours may vary, samples should be requested.



Wall: ICCA47914T2

Kota_01 Gloss



	Sizes (mm)	> <	Finish
1	100x100	9mm	Gloss
2	100x100 T1	15mm	Gloss
3	100x100 T2	15mm	Gloss
4	12x200 JOLLY	9mm	Gloss

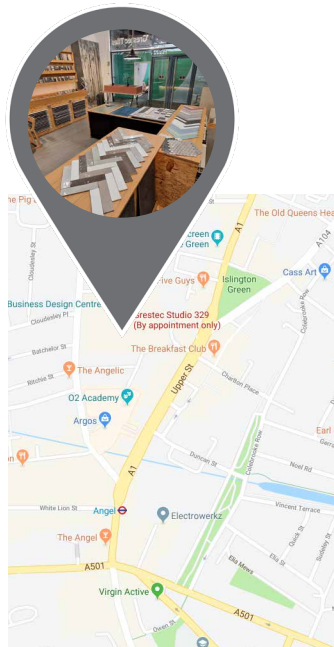
1



Swatch colours may vary, samples should be requested.

Explore our London studios

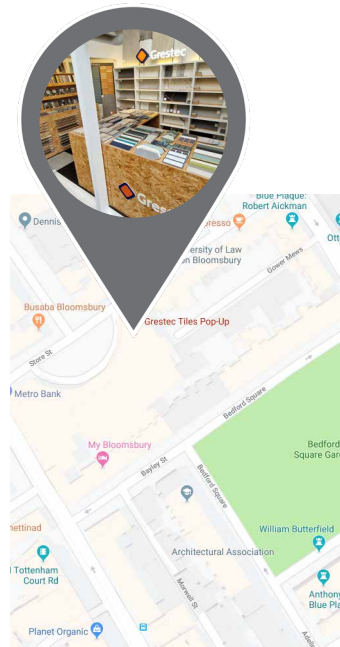
Our tile studios serve as immersive hubs for architects and designers, offering an opportunity to explore our new and existing tile ranges as well as innovative concepts. Thoughtfully designed to foster an environment of creativity, presenting a perfect setting for ideas, solutions and project discussions. Join us today!



Studio 329
Business Design Centre
52 Upper Street, Islington
London
N1 0QH

Angel (3 mins)
Highbury & Islington (10 mins)

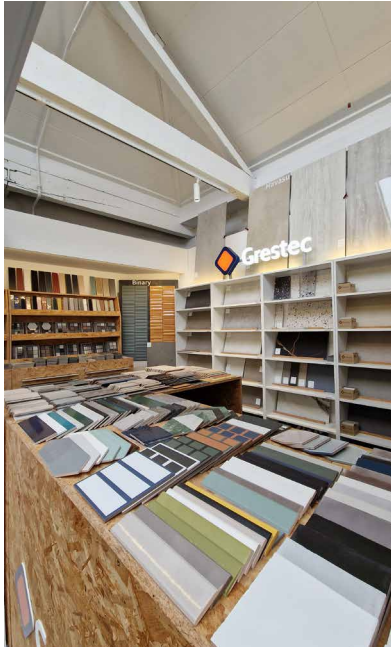
Monday - Friday
By appointment only



The Pop-Up
The Building Centre
26 Store Street
London
WC1E 7BT

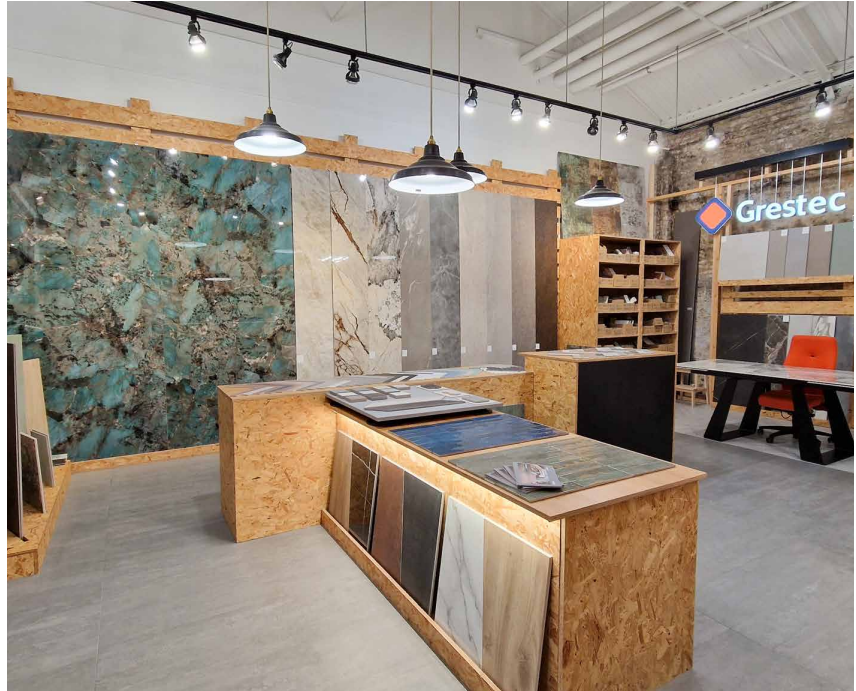
Goode Street (4 mins)
Tottenham Court Rd (6 mins)

Monday - Friday
Unmanned
Walk-in or request a meeting



Above
Pop-Up Studio (WC1)

Right
Studio 329 (Islington)



T: 0345 130 2241

E: sales@grestec.co.uk

W: www.grestec.co.uk

Office:

Unit 4-6 Marley Farm Business Estate,
Headcorn Road, Smarden,
Kent TN27 8PJ

Grestec Studio 329 (appointment only):

Unit 329, Business Design Centre,
52 Upper Street, Islington,
London, N1 0QH

Grestec Pop-Up Studio:

The Building Centre
26 Store Street,
London, WC1E 7BT

