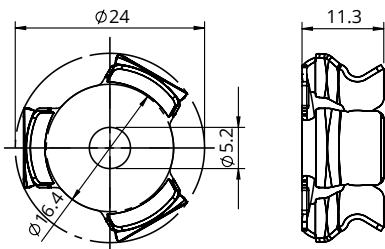
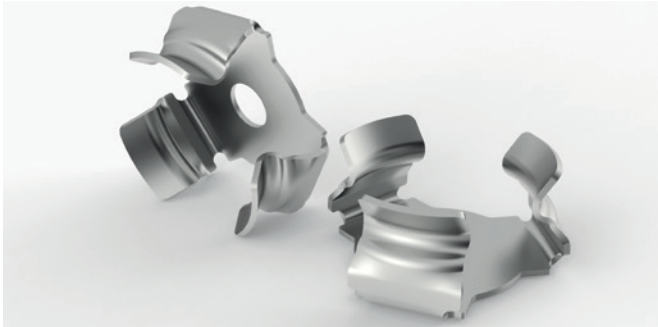




NORTHERN PRECISION LTD

FAST-CON®

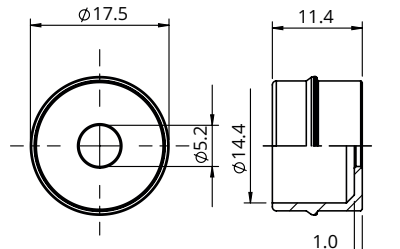
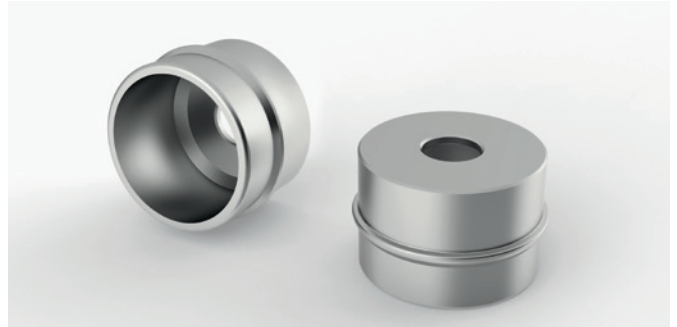
FAST-CON® FEMALE



PART NUMBER	MATERIAL	RELEASE FORCE
FC-01-FE.51	316 Stainless Steel	min. 7kg
FC-01-FE.53	301 Stainless Steel	min. 10kg

The values and dimensions are indicative and not binding dimensions expressed in mm.

FAST-CON® MALE



PART NUMBER	MATERIAL
FC-01-MA.51*	316 Stainless Steel
FC-01-MA.50	301 Stainless Steel

The values and dimensions are indicative and not binding dimensions expressed in mm.
*Special Order

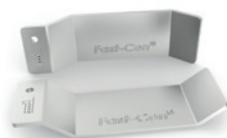
Accessories



Stainless Steel Centre Marking Device
Part Number: FC-01-CE.50



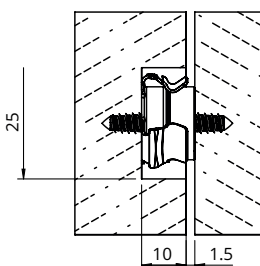
Female Recovery Pliers
Part Number: FC-00-FE



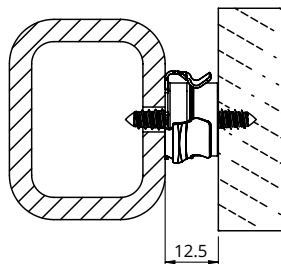
Panel Release Lever
Part Number: FC-00-LE.12

Application examples

Application example: recessed FAST-CON®

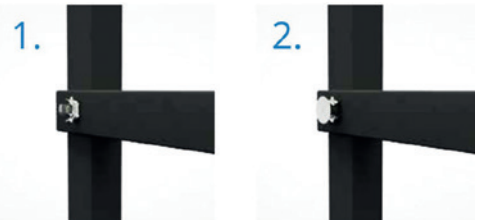


Application example: surface mounted FAST-CON®



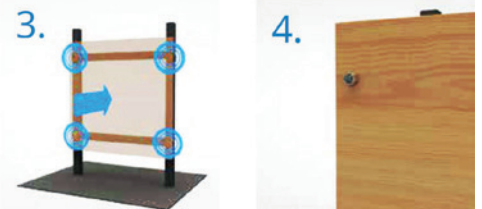
FAST-CON® is a registered trademark of SPECIALINSERT Srl.

Assembly Instructions



Fasten the female FAST-CON® to the structure by screwing, gluing, riveting.

Insert the FAST-CON® centre marking device into the female clips.



Line up the panel in the desired position and exert slight pressure. The markings will act as a reference for fixing the male FAST-CON®.

Secure the male FAST-CON® centred on the markings





The revolutionary concealed quick assembly and release fastening system

FAST-CON® is the new and revolutionary 2 part concealed quick assembly snap on / pull off fastening system.

Practically indestructible, manufactured from 301/303 or 316 stainless steel, resistant to fire and corrosion. The small size and the concealed fixing system make it perfect for all kinds of applications.

FAST-CON® is a patented metal fastening system that allows you to quickly connect panels and coverings by simply pressing and snapping into place; removal is by pulling the panel away. The FAST-CON® clip system allows for a concealed mechanical fixing, making the union of 2 parts quick and reliable.

FAST-CON® is made of 2 parts, male and female, in stainless steel, with a special profile suitable for quick connection and release. FAST-CON® is installed by screwing, riveting or gluing. The clips have a release force (7kg and 10kg) that varies depending on the series used.

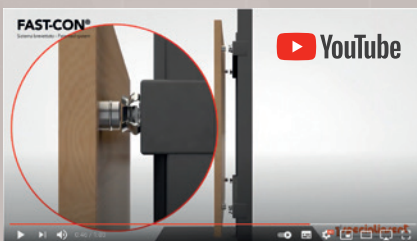
A FAST-CON® stainless steel centre marking device is available to allow perfect hole alignment every time.

Application examples

- Panelling,
- false ceilings,
- boiserie,
- removable coverings,
- removable seats,
- furniture doors,
- advertising desktop customizations,
- etc.

Benefits

- Quick and easy installation
- Flexibility of use
- Minimum overall dimensions
- Can be used in every industry
- Flame resistant
- Corrosion resistant
- Long-lasting life compared to the most common plastic systems



See our YouTube video for more information

tinyurl.com/NP-FAST-CON

Accreditations Northern Precision Ltd operate a quality management system in accordance with ISO 9001. The ISO 9001 standard is recognised worldwide and you can be assured of the benefits of working with a certified company knowing that our management systems are constantly assessed and improved



Sales Tel: +44 (0) 1302 836010
Email sales@npfasteners.com



www.npfasteners.com