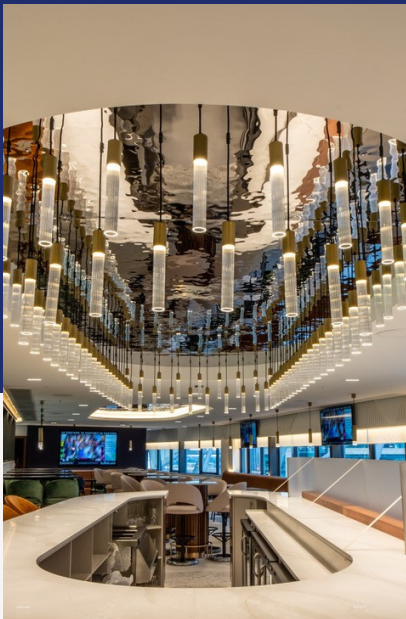




[www.g-tex.com](http://www.g-tex.com)

DECORATIVE METAL SHEET  
SPECIALISTS

**G-Tex.com**  
S T A I N L E S S



Water Effect



CHEMETAL  
Aluminium



Stainless Steel

## ABOUT US

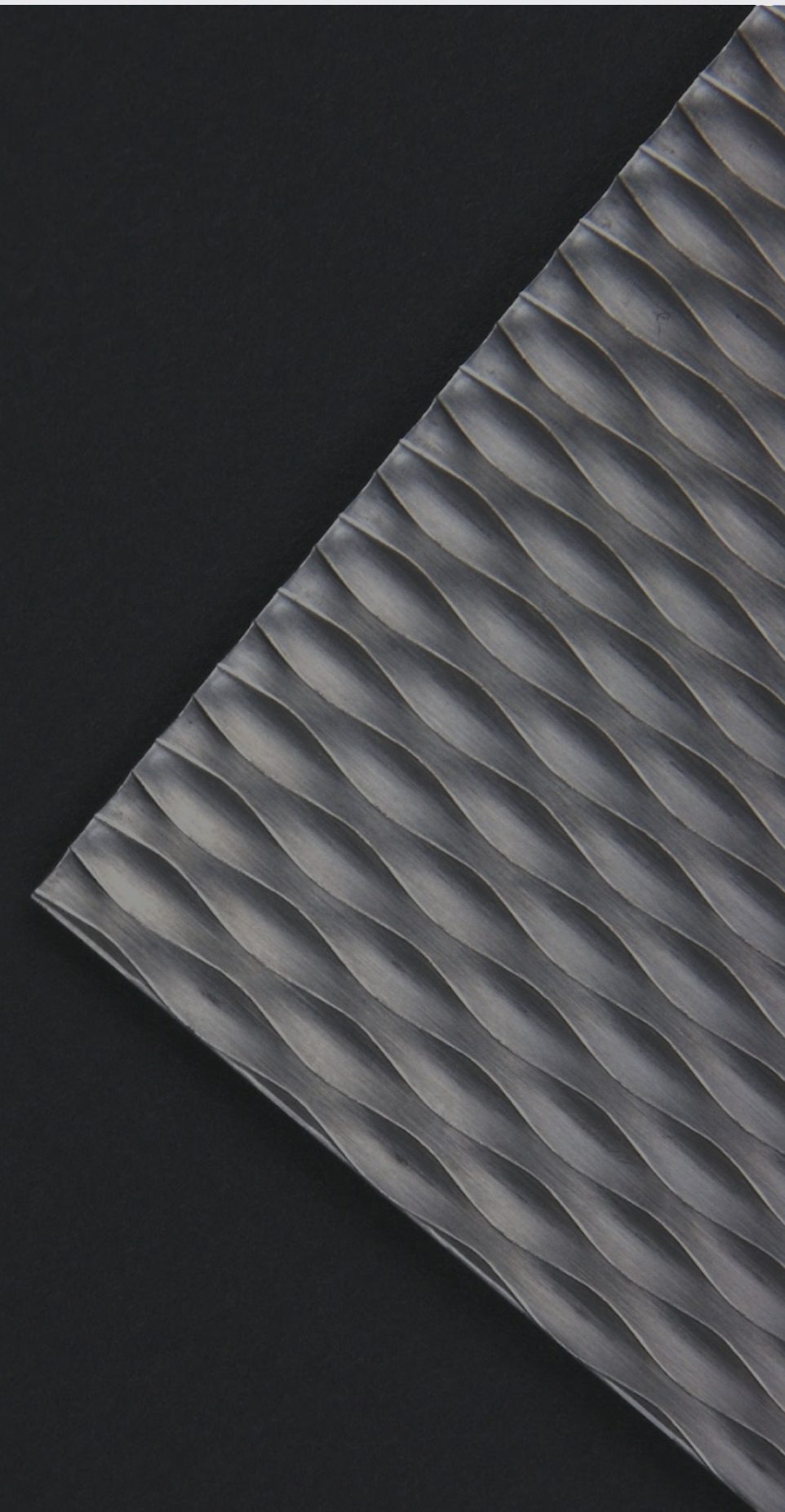
With a profound commitment to innovation and a keen eye for beauty, G-Tex Stainless specialize in providing a diverse range of stainless steel and aluminium products that redefine spaces and elevate aesthetics.

We go beyond ordinary materials, offering you an extensive range of decorative stainless steel finishes. Combined with attractively designed finishes and excellent durability, our decorative metal finishes are the answer to many applications where a great look and a high performance is essential.

Explore our exclusive Water Effect Stainless Steel sheet range. This new collection brings forth a sense of elegance, nature-inspired aesthetics, and a touch of luxury, making it the perfect choice for prestigious interior and exterior projects. We believe that innovation is the key to timeless design, and this addition exemplifies our commitment to staying ahead of the curve.

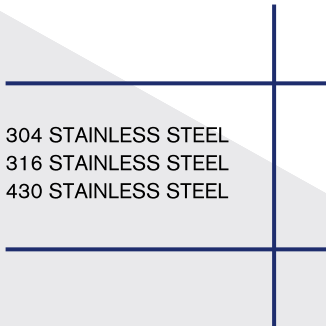
Join us on a journey where metal meets creativity, and together, we'll transform spaces into stunning, functional works of art. Discover the limitless possibilities with G-Tex Stainless today.

[www.g-tex.com](http://www.g-tex.com)



## **Stainless Steel**

Not only for architectural design, our finishes are also used in areas such as catering, lift cars, flooring, toilets, railway carriages, even playgrounds. The limits for patterned stainless steel are boundless. Below you can find some of our most popular Stainless Steel finishes.



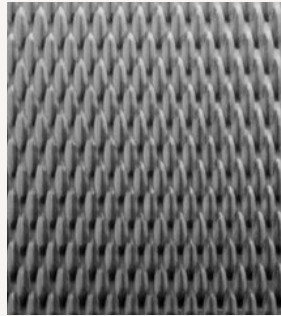
304 STAINLESS STEEL  
316 STAINLESS STEEL  
430 STAINLESS STEEL

# Rigidized stainless steel by G-TEX STAINLESS

5WL  
STAINLESS  
STEEL



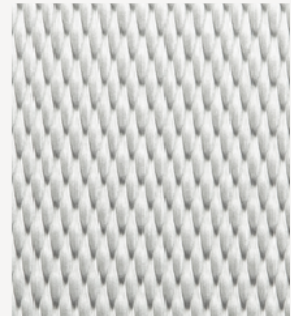
5WL B.A



5WL BRUSHED



5WL ANTI-SLIP

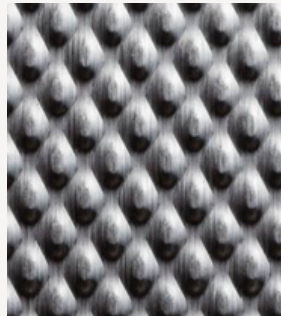


5WL ALUMINIUM

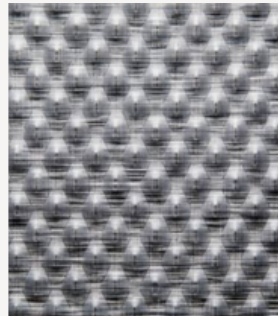
6WL  
STAINLESS  
STEEL



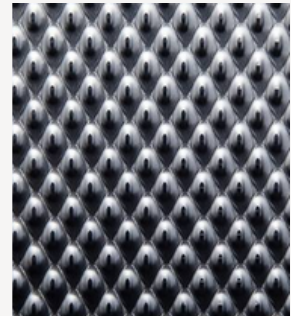
6WL B.A



6WL BRUSHED



6WL ANTI-SLIP



6WL ALUMINIUM

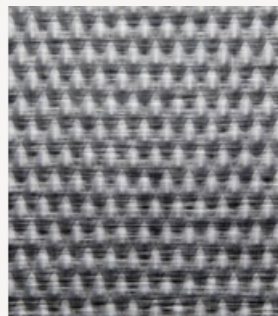
7WL  
STAINLESS  
STEEL



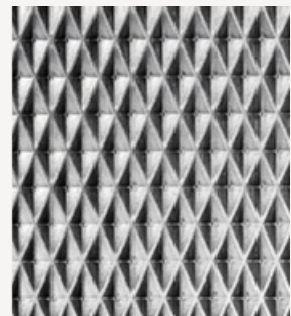
7WL B.A



7WL BRUSHED



7WL ANTI-SLIP



7WL ALUMINIUM

## Technical Specification

3000 / 2500 x  
1250mm  
(1500mm and  
special width)

0.5mm - 3.0mm

Stainless Steel 304  
/ 316

2B, BA, Super  
Mirror No.8 & Satin

**AVAILABLE IN 1500MM WIDE**

[www.g-tex.com](http://www.g-tex.com)

# PVD coloured stainless steel by G-TEX STAINLESS

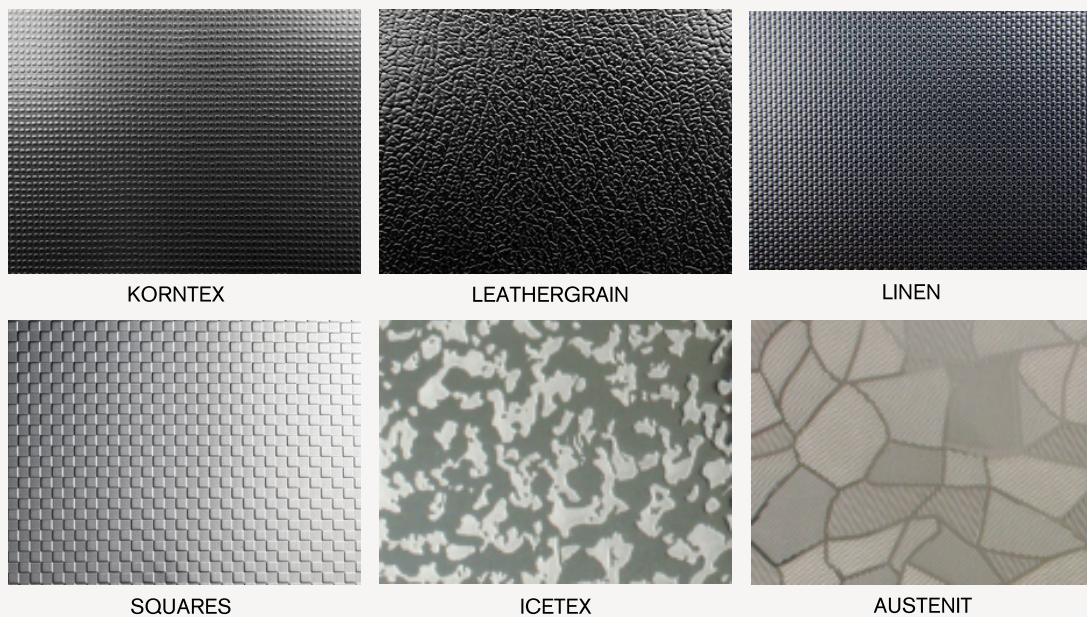
---

PVD stands for Physical Vapour Deposition. PVD colouring improves the performance of Coloured Stainless Steel by increasing wear, scratch resistance and corrosion resistance, making its durability far superior to conventional coating methods such as electroplating or powder-coating. The PVD process is also more environmentally friendly than processes such as electroplating, electro-colouring and painting, with zero discharge of gas, water waste and other residue.



# Embossed stainless steel by G-TEX STAINLESS

---

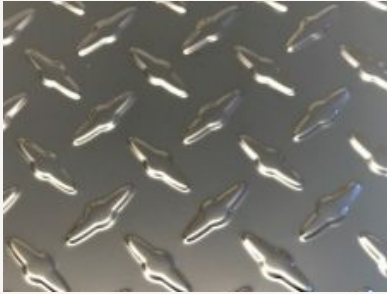


# Anti-Slip Tread Plate stainless steel by G-TEX STAINLESS

Produced using Cold Rolled Stainless Steel Sheet in Grades 304 - 316 - 430 & Galvanised sheet, G-Tex can now offer a lightweight & cost saving Treadplate option.

Perfect for truck bodies, flooring, protective cladding. Our thin gauge range of Treadplate designs, offer the durability of Stainless steel, whilst maintaining a light weight, anti-slip option.

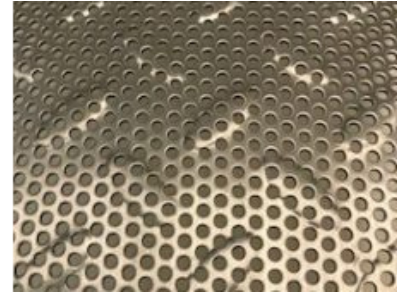
ANTI-SLIP  
TREAD PLATE



PROPELLER B.A



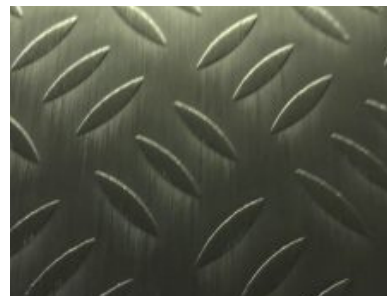
TREAD PLATE 1 BAR SATIN



PERFORATED PT3 SATIN



TB1 R11



TB1 R12

## Technical Specification

3000 / 2500 x 1250mm  
(1500mm and special width)

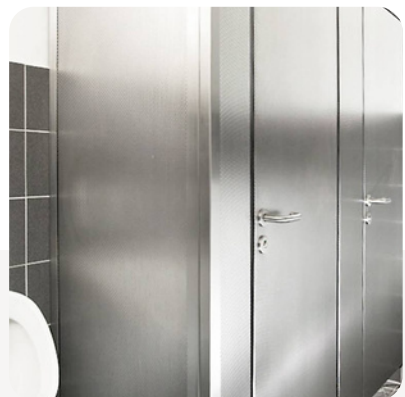
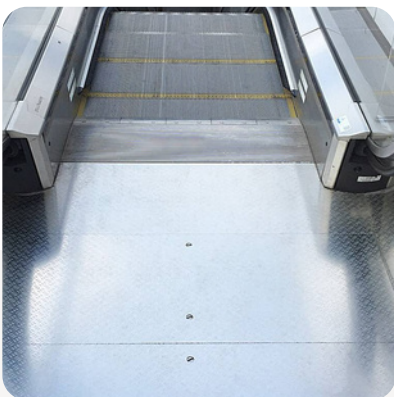
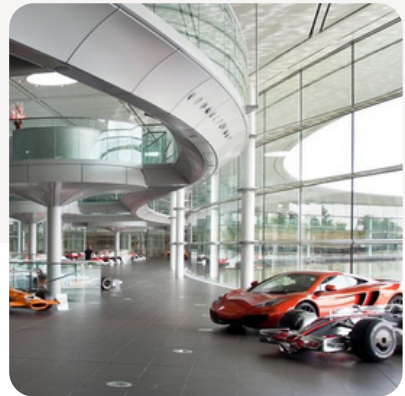
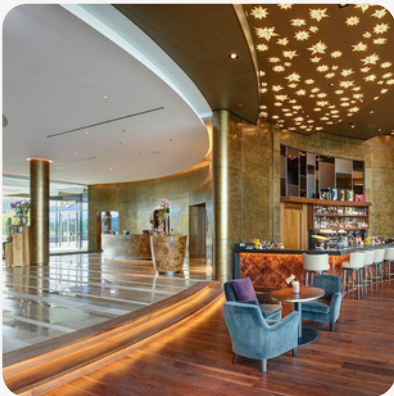
0.5mm - 3.0mm

Stainless Steel 304 / 316

2B, BA, Super Mirror No.8 & Satin



# OUR COLLECTION





CHEMETAL

## Aluminium

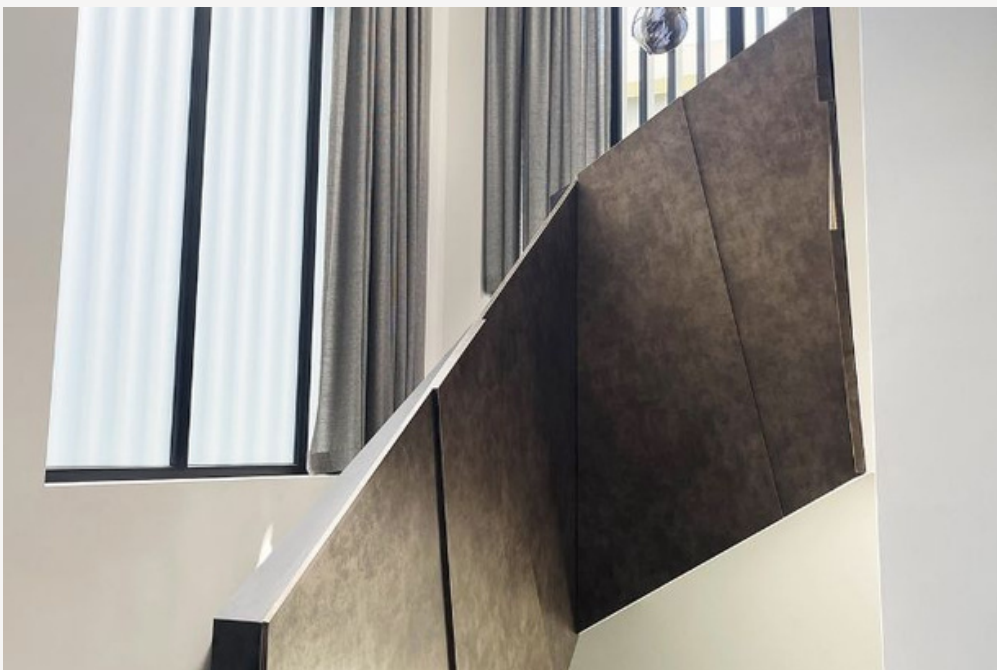
Using deep brushing, aging and adding patinas by hand and machine. G-Tex boasts an exclusive collection of Chemetal aluminium finishes, with over 200 metal laminate designs,

8' X 4'  
10' X 4'

---

ALUMINIUM, BRASS & CHROME

---



Our designs are unique works of art, created with a manufacturing consistency to ensure repeatability. We also source some of the best metal designs the world over.

It adds up to what we consider the most expansive collection of metal designs for interiors that you'll find anywhere. We back it up with exceptional sales and customer service that cares about getting it right.

[www.g-tex.com](http://www.g-tex.com)



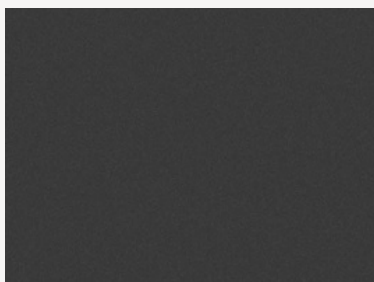
TAKE A LOOK AT SOME OF OUR MOST POPULAR FINISHES,



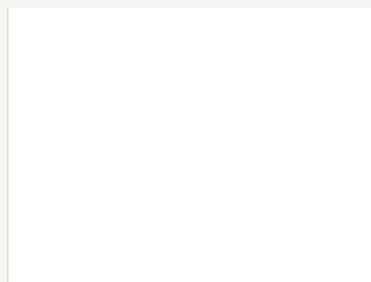
100  
SERIES



#150 - HPL MAGNETIC BOARD

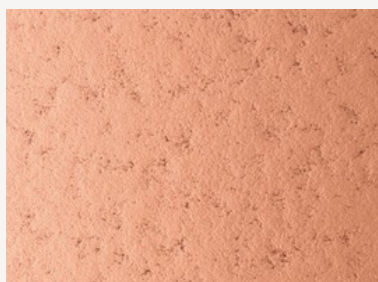


#151 - BLACK MAGNETIC CHALKBOARD



#152 - WHITE GLOSS MAGNETIC

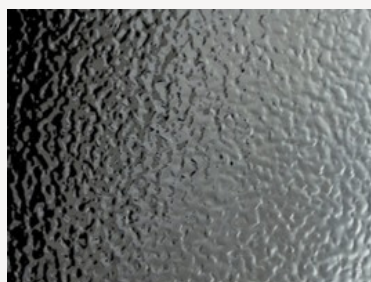
200  
SERIES



#230 - MOONSCAPE

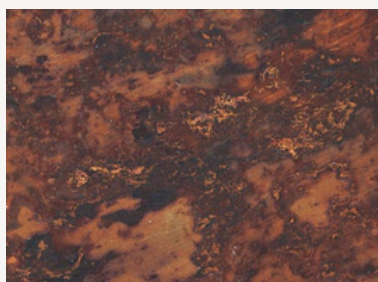


#236 - METAWAVE BRONZE



#277 - FLUX SMOKED

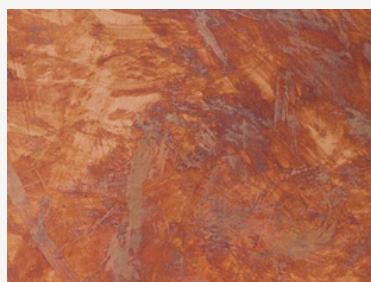
300  
SERIES



#314 - MAYAN



#315 - CANTERBURY

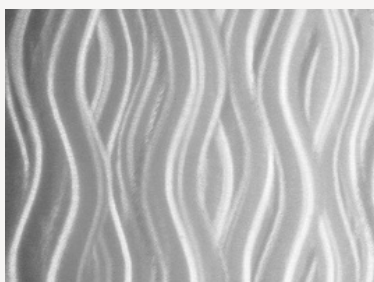


#317 - AURORA

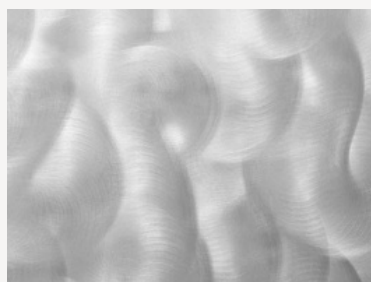
400  
SERIES



#414 - NOMADIC

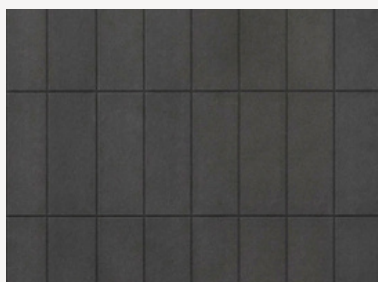


#427 - PLACID

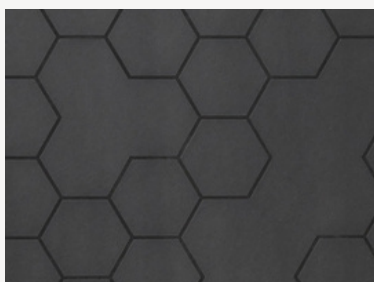


#440 - CRESCENDO

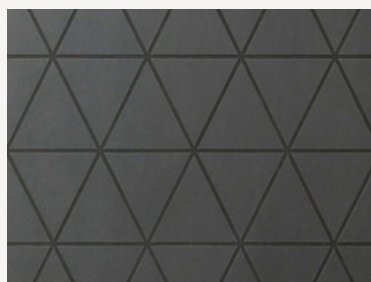
500  
SERIES



#550 - BARCELONA



#552 - GOOD CHEMISTRY



#553 - BUDAPEST

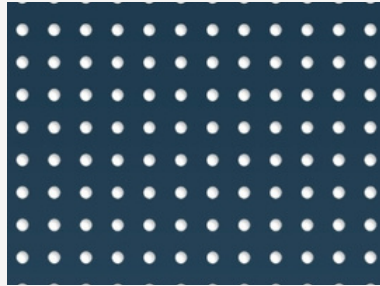
TAKE A LOOK AT SOME OF OUR MOST POPULAR FINISHES,



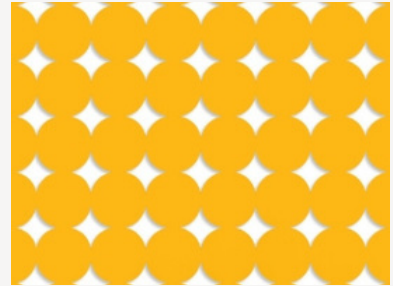
575  
SERIES



#572 - CUBED



#573 - CONNECT

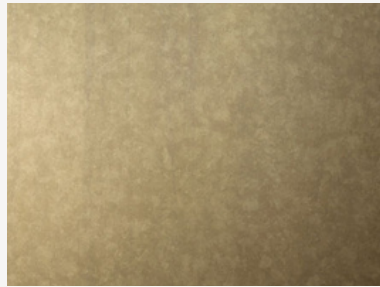


#575 - IMPERIAL

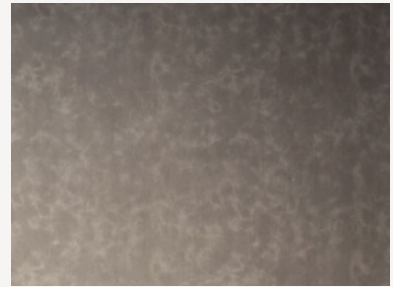
600  
SERIES



#607 - CORE



#609 - GILT



#610 - KHALES

700  
SERIES



#701 - POLISHED



#703 - POLISHED BRASS



#706 - SATIN COPPER

800  
SERIES



#801 - POLISHED CHROME

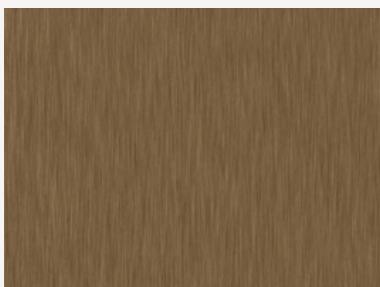


#801 - POLISHED SOLID BRASS

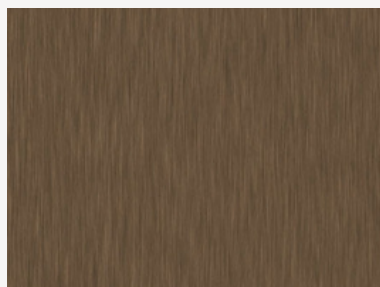


#804 - SATIN SOLID BRASS

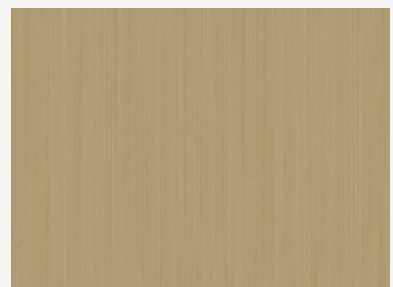
900  
SERIES



#934 - LIGHT BRONZE

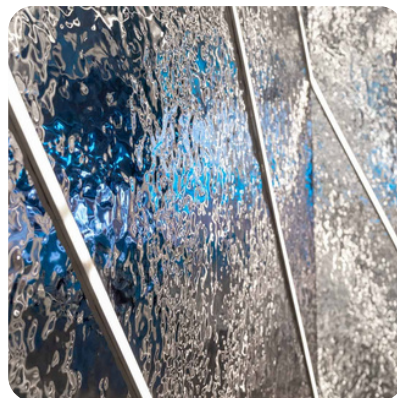
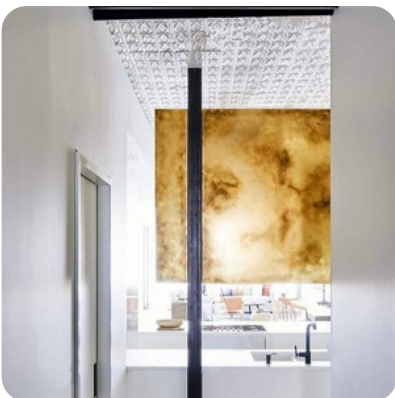
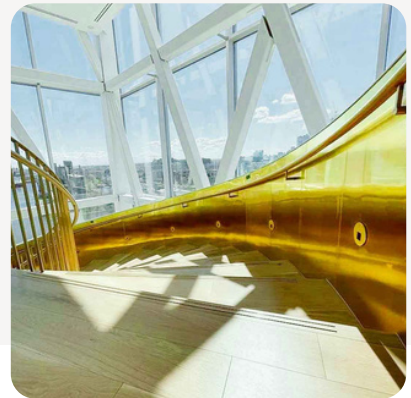
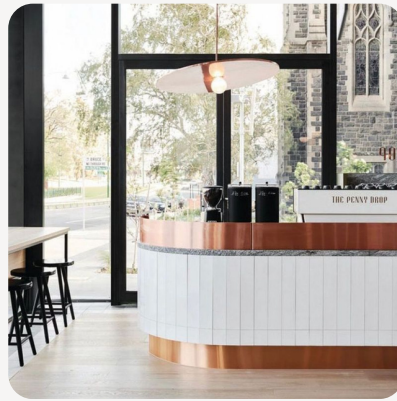


#935 - DARK BRONZE



#936 - CHAMPAGNE BRASS

# OUR COLLECTION





## Water Effect Stainless Steel

G-Tex Stainless, known for its commitment to quality, innovation, and design excellence, proudly presents our exclusive range. Our dedication to pushing the boundaries of what is possible in interior and exterior design, has led to the creation of Water Effect Stainless Steel.

Inspired by the serene, fluid beauty of water, Water Effect Stainless Steel captures the essence of nature's elegance. This unique stainless steel collection is designed to bring a sense of tranquility, sophistication, and luxury to prestigious interior and exterior projects.

Each sheet in the Water Effect Stainless Steel range reflects the enchanting and dynamic qualities of water, allowing you to infuse your spaces with a sense of opulence and natural beauty. The result is an interior or exterior environment that is as captivating as it is functional.



### Technical Specification

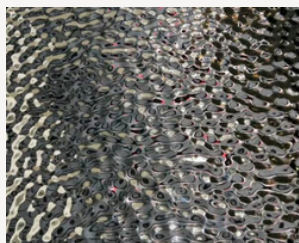
3000 / 2500 x  
1250mm  
(1500mm and  
special width)

0.5mm - 3.0mm

Stainless Steel 304  
/ 316

2B, BA, Super  
Mirror No.8 & Satin

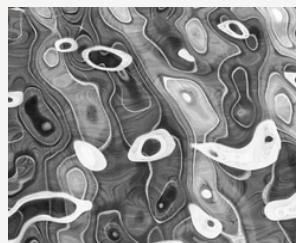
## FEATURING 8 DIFFERENT FINISHES



Lomond



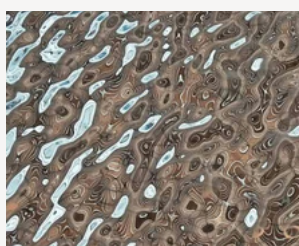
Oregon



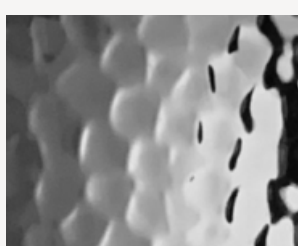
Garda



Pacific



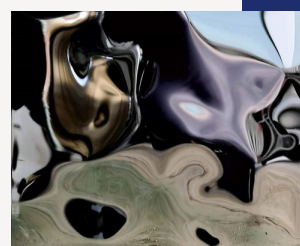
Geneva



Malawi

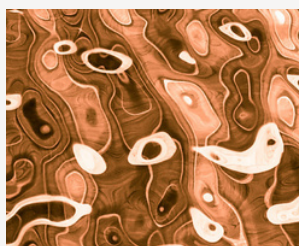


Superior

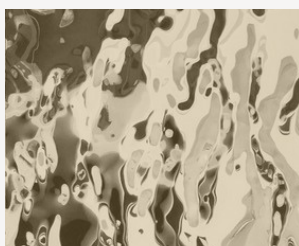


Victoria

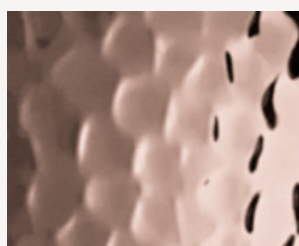
## AVAILABLE IN 8 DIFFERENT PVD COLOURS



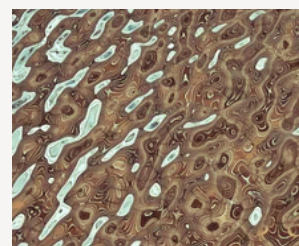
Copper



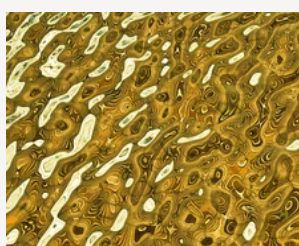
Champagne



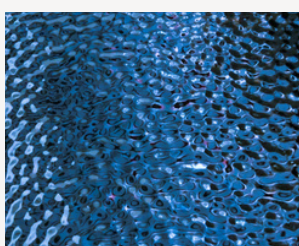
Rose Gold



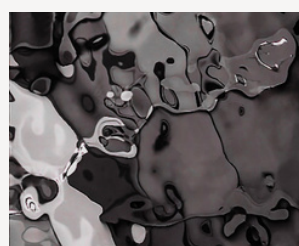
Bronze



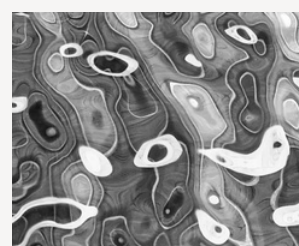
Gold



Blue



Black

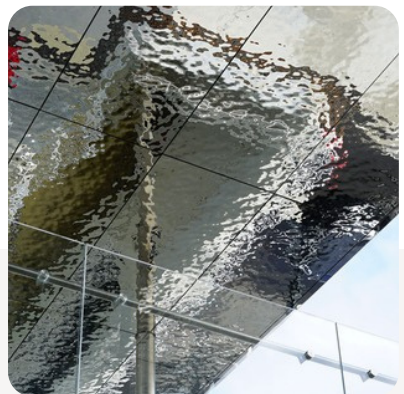
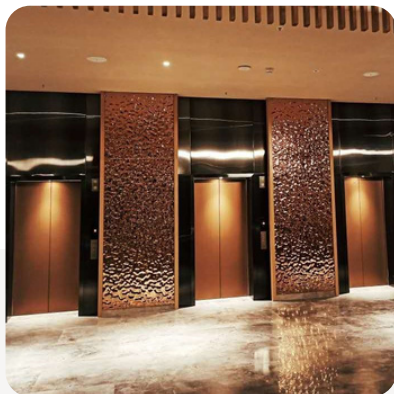
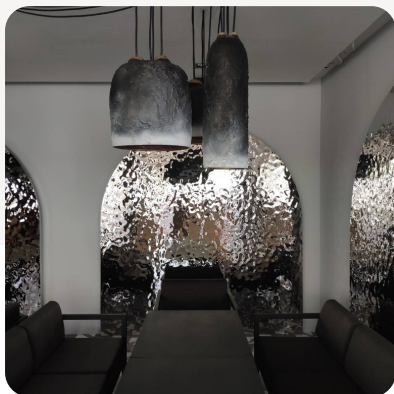


Natural

HARNESS THE SERENITY OF WATER IN  
METAL FORM

[www.g-tex.com](http://www.g-tex.com)

# OUR COLLECTION





---

## CONTACT US TODAY

FOR SAMPLES, PRICING, AND EXPERT  
GUIDANCE



[sales@g-tex.com](mailto:sales@g-tex.com)



[www.g-tex.com](http://www.g-tex.com)



01384 233800



---

In the realm of manufacturing and construction, stainless steel and aluminum reigns supreme as the shining knights of sustainability. Its magical properties enable it to craft durable creations that withstand the test of time, all while keeping our planet in tip-top shape.

When it comes to eco-friendliness, stainless steel and aluminum is the go-to choice that never disappoints.