



KEIM COLOURWASH

Interior paint for creating a limewash aesthetic without the hassle of traditional limewash.

The easiest way to create the limewash look

Suitable for bare and previously painted walls and ceilings, create a timeless aesthetic with one coat of KEIM Colourwash BASE and one application KEIM Colourwash in one of our curated shades. No art degree necessary.

Like limewash, but better

Unlike limewash, KEIM Colourwash creates the perfect finish in just a single coat, is non-caustic and forms a permanent bond to the surface for a chalk-free finish.

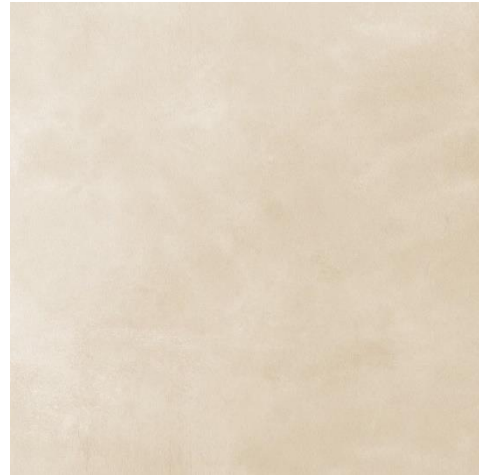
- Suitable for bare and previously painted walls/ceilings
- Chemically bonds to the substrate or mechanically to existing paint
- Highly breathable (0.01m sd Value)
- Ultra-low VOC (<1g/l)
- Eco & user friendly
- Vegan

KEIM COLOURWASH

CURATED COLOUR RANGE



SALT



KNIT



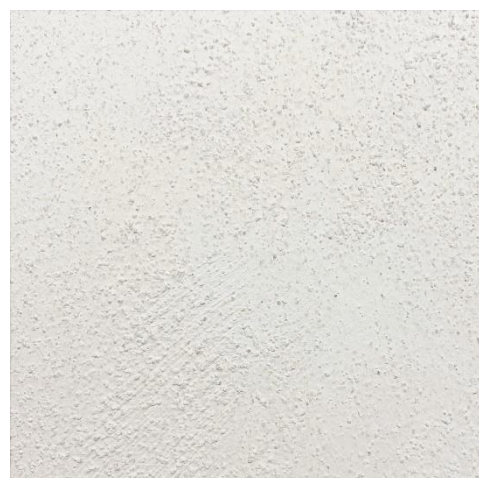
BEAR



ROOT



MYTH



Textured Undercoat

The above are representations of the materials once applied. Hand painted swatches can be ordered via sales@keimpaints.co.uk or 01952 231250. A free of charge bespoke colour design service is also available.

KEIM COLOURWASH BASE

TECHNICAL INFORMATION

PRODUCT DESCRIPTION

KEIM Colourwash BASE is an opaque white sol-silicate paint for interior use according to DIN EN 13 300.

FIELD OF APPLICATION

KEIM Colourwash BASE is suitable for bare and previously painted interior wall and ceilings. For application onto bare lime plaster, use KEIM Colourwash Lime Primer first. Not suitable for plastic, wood or metal.

SURFACE PREPARATION

Abrade gloss/sheen finishes with sandpaper to create a key. Repair/fill with only mineral-based materials (such as KEIM Dolomitspachtel) and allow 1 day per millimetre thickness drying time. New lime plaster should be allowed a minimum period of 28 days to dry and a coat of KEIM Colourwash Lime Primer 12 hours before painting. Ensure surfaces are clean, sound and dry.

APPLICATION

Stir contents thoroughly before application. Apply a single, undiluted coat of KEIM Colourwash BASE by brush or roller. Allow a minimum period of 12 hours before overcoating with KEIM Colourwash.

PROPERTIES & CLASSIFICATION

Highly vapour permeability
Anti-fungal and anti-algae
No solvents, plasticisers or preservatives
Very Low odour
Non-flammable (Class A2-s1, d0 as per EN 13501-1)
Approx. 1.4 - 1.6 g/cm³ density
< 5% organic content
Approx. 11 pH value
≤ 0.01m Diffusion-equivalent air layer thickness (sd Value)
Class 1 wet abrasion resistance
Class 1 contrast ratio covering power
Flat matt finish
UV stable
Fine maximum particle size

COMPOSITION

Silicate and calcite fillers, titanium dioxide, silica sol, water, polyacrylate, hydrophobing agents, thickeners, stabilisers, wetting agents, defoamers. Origin of mineral fillers: Germany and/or Austria.

APPLICATION CONDITIONS

Ambient and surface temperature must be 5-30°C during application and drying. Protect surfaces not to be painted. Any splashes must be rinsed off immediately with plenty of water. Clean tools immediately with water.

CONSUMPTION

0.125l/m² for a single coat onto smooth surfaces

PACKAGING

1lt & 5lt containers

STORAGE

Maximum 12 months when stored airtight in a frost-free environment. Protect from heat and direct sun.

DISPOSAL

For disposal information refer to Section 13 of the Material Safety Data Sheet. EC Waste Code: 08 01 12

SAFETY INSTRUCTIONS

Please, refer to the Material Safety Data Sheet

DISCLAIMER

The stated values and properties are the result of extensive development work and practical experience. Our recommendations for application, whether given verbally or in writing, are intended to assist in the selection of our products and do not establish a contractual relationship. They do not release the purchaser and processor from the obligation to convince themselves of the suitability of our products for the intended application with due care, which is general practice in trade and crafts. The general rules of construction technology must be observed. We reserve the right to make modifications to improve the product or its application.

KEIM COLOURWASH

TECHNICAL INFORMATION

PRODUCT DESCRIPTION

KEIM Colourwash is a translucent paint for interior decorative finishes.

FIELD OF APPLICATION

KEIM Colourwash Base must be applied over KEIM Colourwash BASE.

SURFACE PREPARATION

Allow 12 hours minimum following the application of KEIM Colourwash BASE before proceeding.

APPLICATION

KEIM Colourwash must be applied over KEIM Colourwash BASE. **Combine the proportionality supplied materials, mix thoroughly before use and stir throughout application to prevent separation.** Apply KEIM Colourwash using a wide, soft bristle brush (such as the KEIM Oval Brush), working from the bottom of the wall upwards. Dip just the tips of the bristles into KEIM Colourwash and tap the brush on the side of the container to remove excess. Move the brush like you're conducting a symphony, overlapping sweeping "M" and "W" motions, blending drips where required. Maintain a wet edge throughout application and work to a natural breakline. Do not touch up or overlap dry areas.

PROPERTIES & CLASSIFICATION

Highly vapour permeability
Anti-fungal and anti-algae
No solvents, plasticisers or preservatives
Very Low odour
Non-flammable
Approx. 1.1 - 1.3 g/cm³
< 5% organic content
Approx. 11 pH value
≤ 0.01m Diffusion-equivalent air layer thickness (sd Value)
Flat matt finish
UV stable
Fine maximum particle size

COMPOSITION

Mineral fillers, potassium water glass, silica sol, acrylate dispersion, liquid solution from silicic acid potassium salt and organic additives. Origin of mineral fillers: Germany and/or Austria.

APPLICATION CONDITIONS

Ambient and surface temperature must be 5-30°C during application and drying. Protect surfaces not to be painted. Any splashes must be rinsed off immediately with plenty of water. Clean tools immediately with water.

CONSUMPTION

0.15lt/m² for a single coat onto smooth surfaces

PACKAGING

1lt, 2.5lt & 5lt containers

STORAGE

Maximum 12 months when stored airtight in a frost-free environment. Protect from heat and direct sun.

DISPOSAL

For disposal information refer to Section 13 of the Material Safety Data Sheet. EC Waste Code: 08 01 12 / 06 02 99.

SAFETY INSTRUCTIONS

Please, refer to the Material Safety Data Sheet.

DISCLAIMER

The stated values and properties are the result of extensive development work and practical experience. Our recommendations for application, whether given verbally or in writing, are intended to assist in the selection of our products and do not establish a contractual relationship. They do not release the purchaser and processor from the obligation to convince themselves of the suitability of our products for the intended application with due care, which is general practice in trade and crafts. The general rules of construction technology must be observed. We reserve the right to make modifications to improve the product or its application.

