

# KENOTEQ®

# K-BRIQ®

# K-SLIP™

Building a sustainable world K-Briq® by K-Briq®





## 2025-26 – Factory #1 – Impact

♻️ 6,600 tonnes of construction & demolition waste recycled

↓↓ 1,365 tonnes CO2e saved for the built environment compared to producing clay bricks





## The Problem

Construction sector is  
**biggest contributor of waste globally**

**Millions of tonnes** of construction  
waste still finds its way to landfill

**Extraction – carbon intensive & the  
earth is running out of basic raw  
materials**

**Firing – fossil fuels & rising energy  
costs**



The global  
economy is  
only 7.2%  
circular and  
on the  
decline!

## Our Solution

Produce ultra- low carbon building materials made from near **100% recycled content**

**Repurpose waste** as a valuable asset to contribute significantly towards a sustainable & circular future

**No firing!** Use state of the art technologies and equipment to **reduce and mitigate carbon emissions**





# Award Winning



## K-BRIQ® Facing Brick (interior + exterior)

## K-SLIP™ Brickslip (interior + exterior)



### SUSTAINABLE

**No Firing**  
**<10% Energy Use**  
**<5% Carbon Footprint**  
**100% Recyclable**



### TESTING & CERTIFICATION

**Comparable Tech. Specification**  
**Double Thermal Insulation**  
*(compared to Portland Cement)*  
**BBA Certified (UK)**  
**DrJ Technical Assessment (USA)**  
**European Certification Underway**  
**EPD – early 2026**



### FIRST TO MARKET

**Near 100% Recycled Content**  
**Exterior and Interior “eco-brick”**  
**12 Certified + Bespoke Colours**  
**Flexible Production Location Model**



### PATENT

**UK Granted (Nov 2018)**  
**US Granted (June 2020)**  
**European Granted (March 2023)**  
**Canada (pending)**



## Our Closed Loop System



We process over  
300,000 tonnes of waste each year.



The waste is recycled using our state-of-the-art wash plant  
to create high quality products for the construction industry.



90% of water is reused thanks to our  
water treatment system.



0.01% of the waste cannot be  
recycled or reused.



BREWSTER  
BROTHERS



0-2mm  
sand



0-4mm  
sand



4-10mm  
gravel



10-20mm  
gravel



20-40mm  
gravel

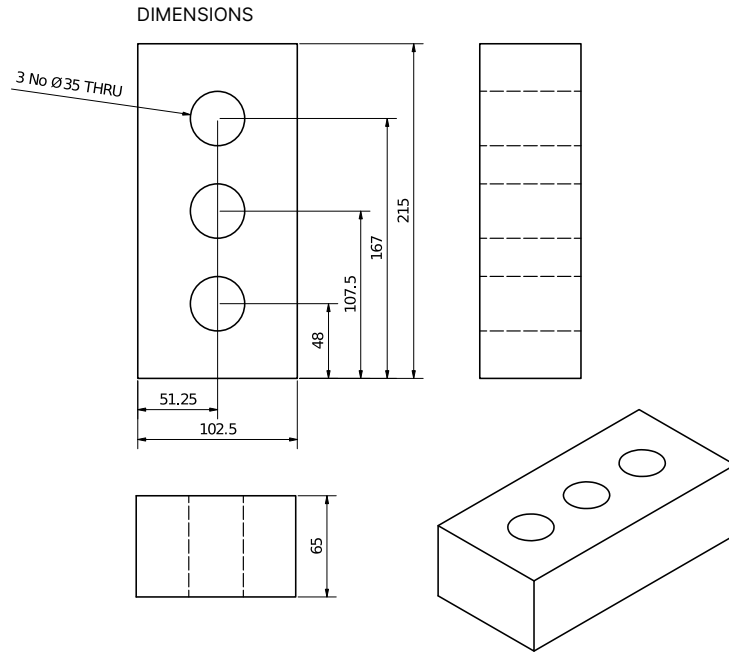


Type 1



Screened  
topsoil

# K-BRIQ® Specification



## COLOURS / SHAPES

**12 BBA-certified colours**  
**Light and dark variations**  
**UV-tested**

**Perforated (3-holes) or solid options**





# Facing Brick Walling – Tech. Spec.

**K-BRIQ Brick Testing (UK):** to BS EN 772, BS EN 1052, BS EN ISO 4892, BS EN 12572, BS EN 12664, BS EN 13823, BS EN 1716

**Brick Dimensions (L x W x H mm):** 215 x 102.5 x 65

**Size Tolerance:** T2 R1

**Shape:** Vertically perforated

**Reaction to Fire (UK):** Class A2 s1 d0 (Medero Dark Grey) and B (other colours)

**Compressive Strength:** 30 N/mm<sup>2</sup>

**Durability:** F2

**Active Soluble Salts:** S2

**Water Absorption (% weight):** 2%

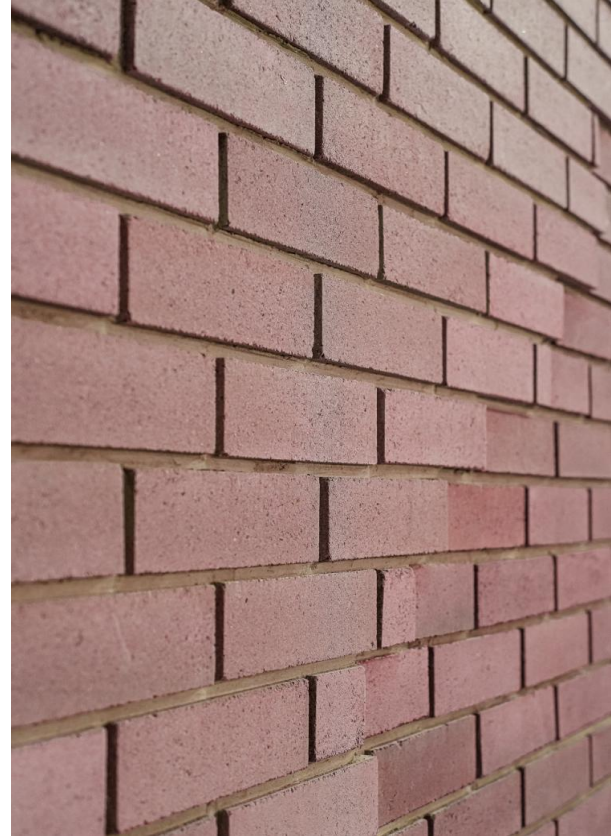
**Gross Dry Density:** 1,750 kg/m<sup>3</sup>

**Equivalent thermal conductivity:** 0.74 W/mK



## Lifespan

“Under normal service conditions, the product will have a life of **at least equivalent to the structure in which it is incorporated**, provided it is designed, installed and maintained in accordance with the manufacturer’s instructions.”





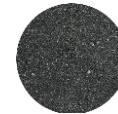
# K-SLIP™ Specification

## DIMENSIONS

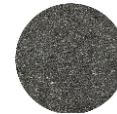
215 x 65 x 20 mm



Flat face or cut face



Pure  
Black



Medero  
Dark Grey



Medero  
Light Grey



Gullane  
Cyan /  
Light



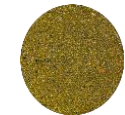
Chapman  
Burnt  
Orange



Watt  
Light  
Brown



Gillespie  
Magenta /  
Light



Heriot  
Mustard  
/ Light

## K-BRIQ® K-SLIP™ Standard Colour Palette



**Top Row, L-R:**  
Pure Black, Mixed  
Black, Light Grey,  
Burnt Orange, Burnt  
Orange Light

**Bottom Row, L-R:**  
Cyan, Cyan Light,  
magenLight

**Middle Row, L-R:**  
Brown, Light Brown,  
Mustard, Mustard Light

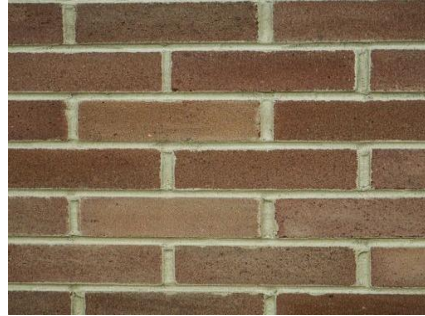


# K-BRIQ® Specification

Multi-tonal  
across a  
batch



Pure Black



Watt  
Light Brown



Heriot Mustard



Gillespie Magenta



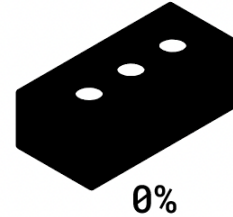
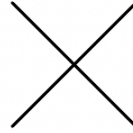
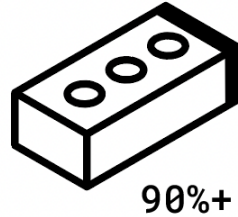
Gullane Cyan



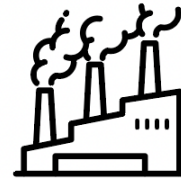
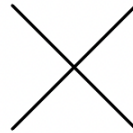
Mixed Black, Watt Brown,  
Chapman Burnt Orange

2.1 kg recycled  
waste in each  
K-Briq

RECYCLED  
CONSTRUCTION  
WASTE



EMBODIED  
CARBON

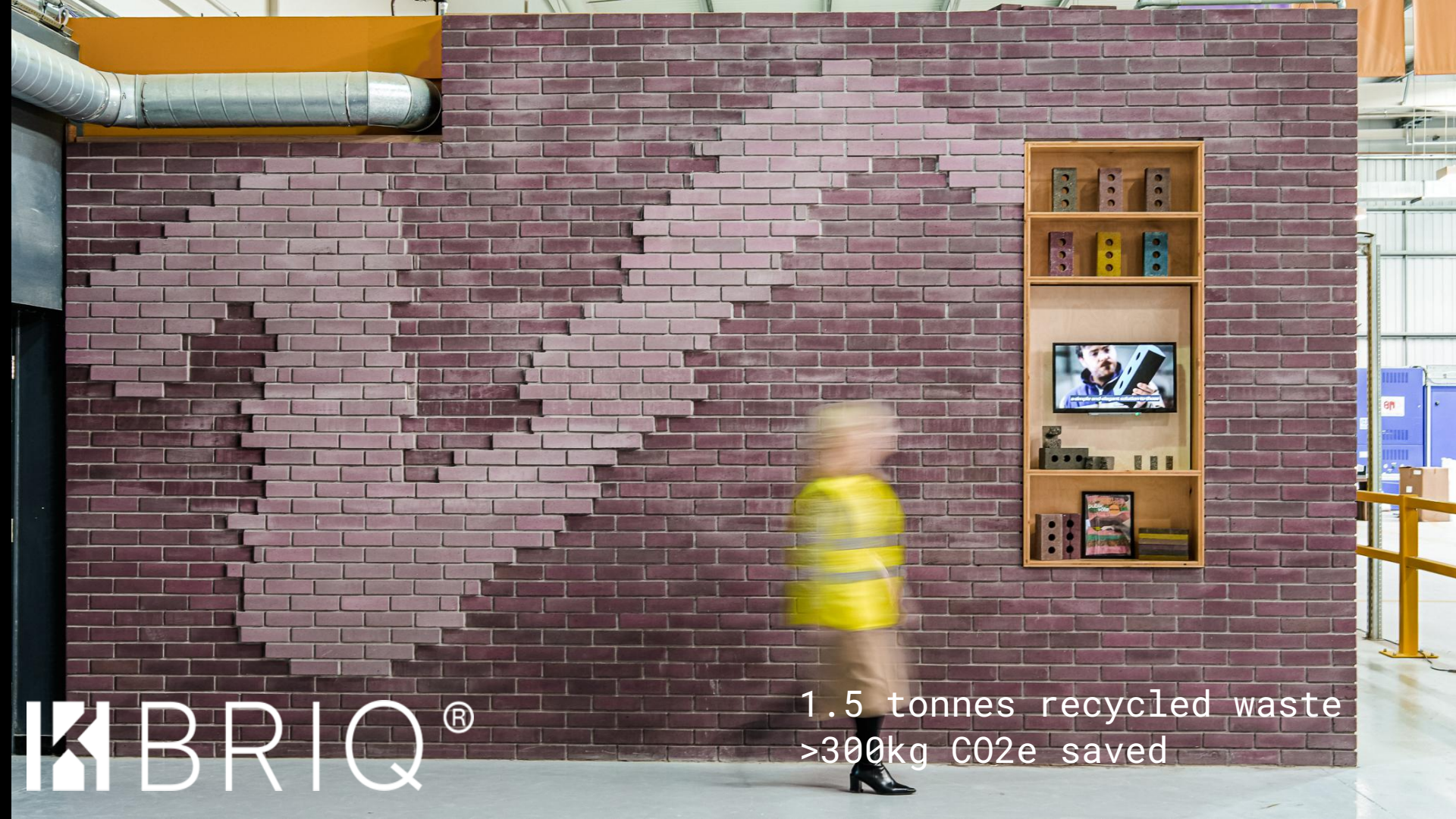


95% less embodied  
carbon

16.8g CO<sub>2</sub>e | 1.006 kg CO<sub>2</sub>e  
per unit | per m<sup>2</sup>

455g\* CO<sub>2</sub>e | 27.3 kg CO<sub>2</sub>e (\* Brick  
Development  
Association EPD)  
per unit | per m<sup>2</sup>





**BRIQ**®

1.5 tonnes recycled waste  
>300kg CO2e saved





**IK** BRIQ<sup>®</sup>





**K** BRIQ®



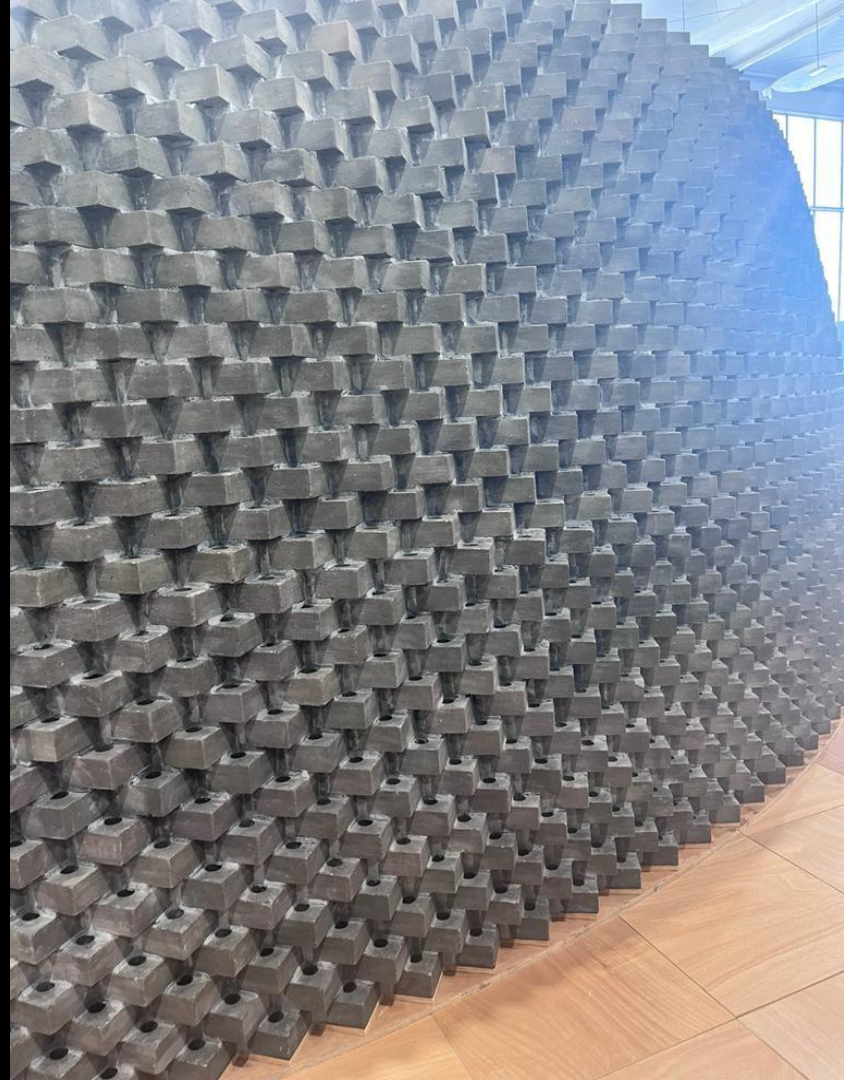
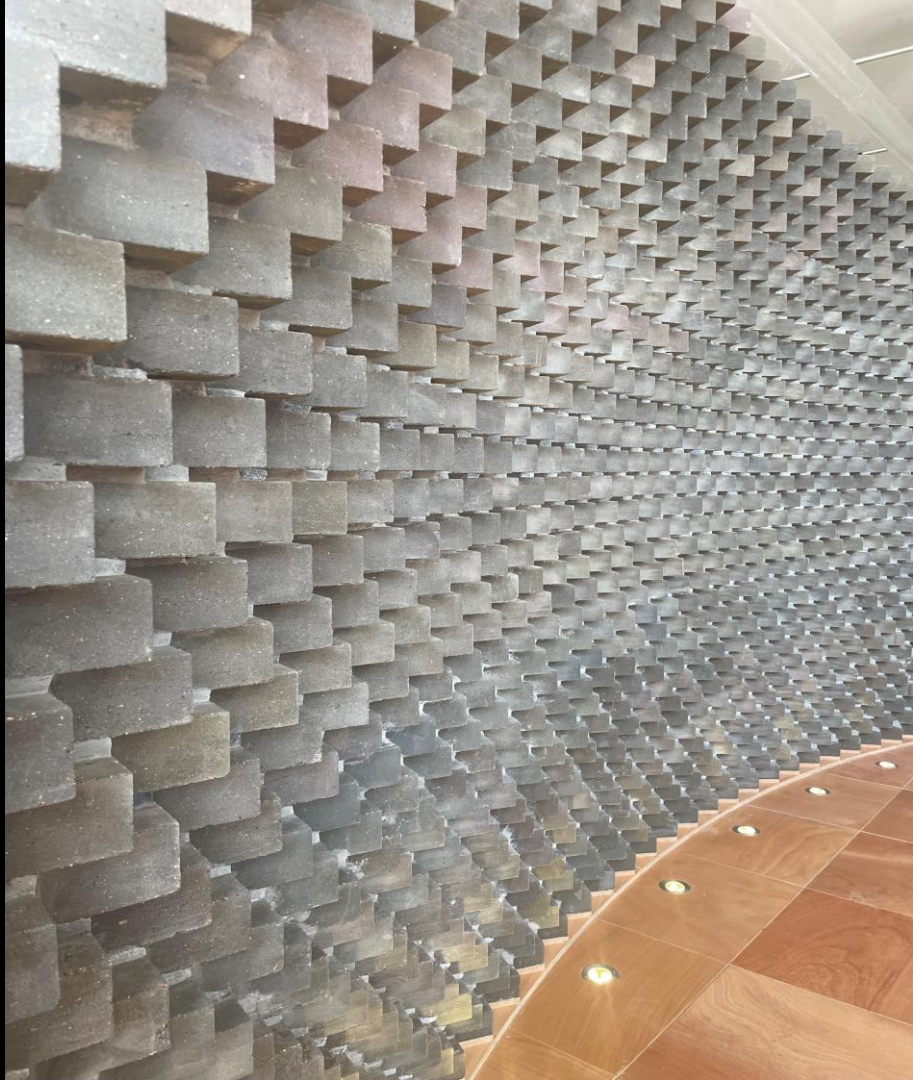
COP28 UAE – Dubai Holding Pavilion  
Skidmore Owings Merrill



**KBRIQ**®

1.5 tonnes recycled waste  
>300kg CO2e saved













FOR THE  
GOOD OF  
TOMORROW

Designed by

BRIQ®

SOM

DUBAI  
HOLDING



# KBRIQ®

The Yard Theatre, London  
Takero Shimazaki





Sample  
panels





# National Retrofit Centre (2025) BE-ST, Glasgow



**KBRIQ®**

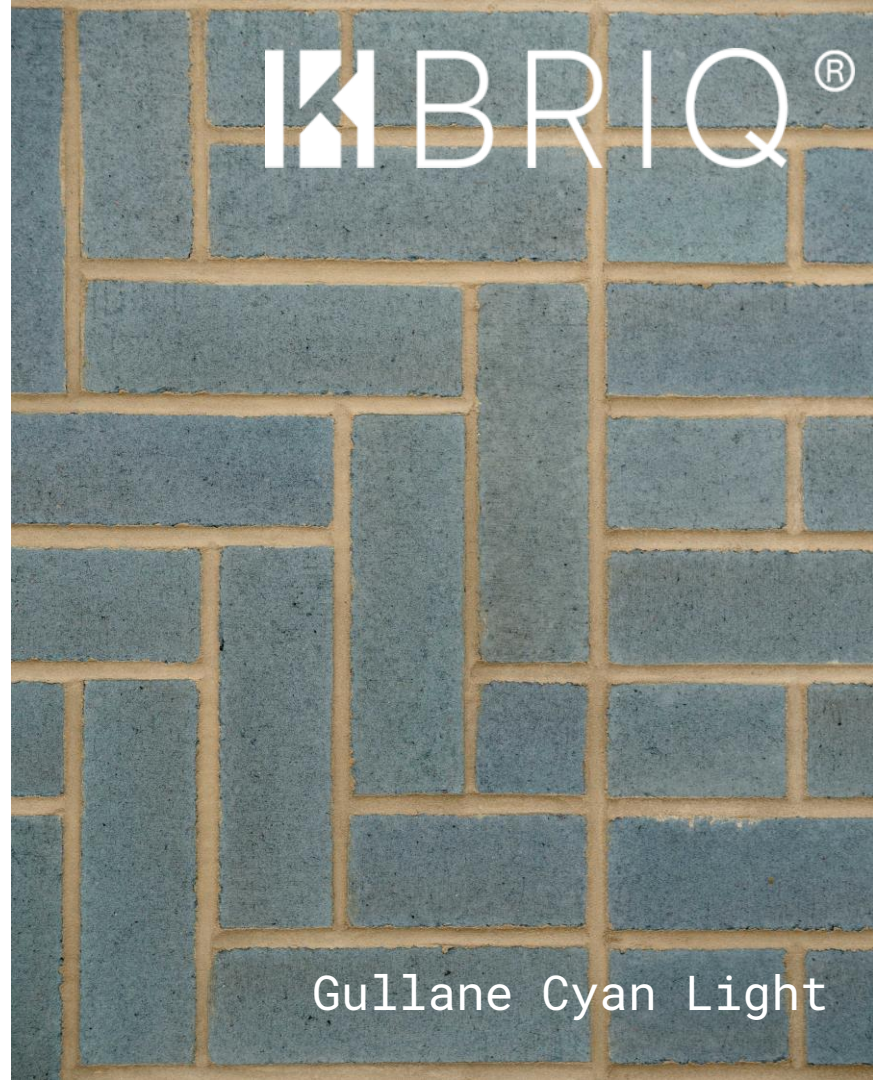






Oaklands College, St Albans  
Sustainable Construction Centre









'Waste  
Not, Want  
Not'  
House,  
East  
London –  
Whittaker  
Parsons

**KBRIQ**®





IKBRIQ®





**K** BRIQ<sup>®</sup>

0.5 tonnes recycled waste  
131.5 kg CO<sub>2</sub>e saved





Gail's Bakery, Weybridge  
Holland Harvey Architects



SLIP™



Gail's Bakery, Manchester  
Object Space Place 2023



**KBRIQ**®



0.714 tonnes of recycled waste  
149 kg CO<sub>2</sub>e saved



# KBRIQ®

50 m<sup>2</sup>

6.3 tonnes recycled waste

1.3 tonnes CO<sub>2</sub>e saved





BORD BIA  
**Bloom**



**SLIP**<sup>TM</sup>





RHS Hampton  
Court Palace  
Garden Festival



 **BRIQ**®







KBRIO®


KSLIP™





**W**OVEN **SLIP™**





7m2 K-Slips  
756kg recycled waste  
75.4kg CO2e saved

**K**SLIP™





**K**SLIP™





[info@kenoteq.com](mailto:info@kenoteq.com)



Kenoteq Ltd  
Edinburgh / North Berwick, UK  
[www.kenoteq.com](http://www.kenoteq.com)

Tel: +44 (0)131 451 8359 / +44 (0)789 987 1269

