

# TECHNICAL DATA SHEET



## Crag family

**Durable and Robust:** Homogeneous material for enhanced strength.

**Customizable:** Tailor the size, texture, and color to your project.

**Versatile:** Suitable for indoor, outdoor, and wet area use.

**Beautiful Designs:** Wide variety of textures and colors.

**Low Maintenance:** Easy to clean and keep looking great.

**Sustainable Choice:** Made with recycled materials.



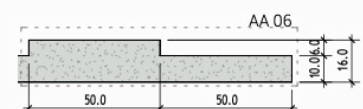
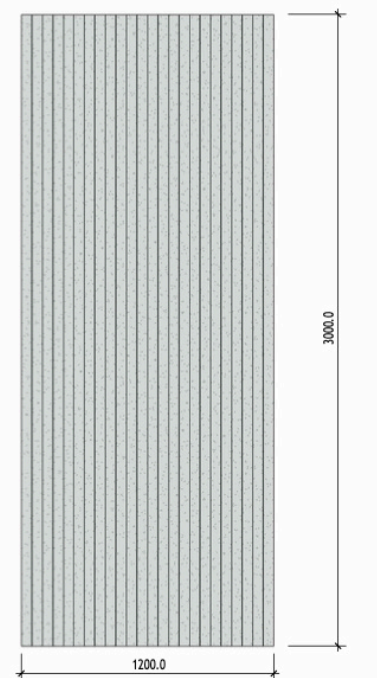
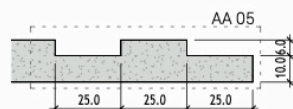
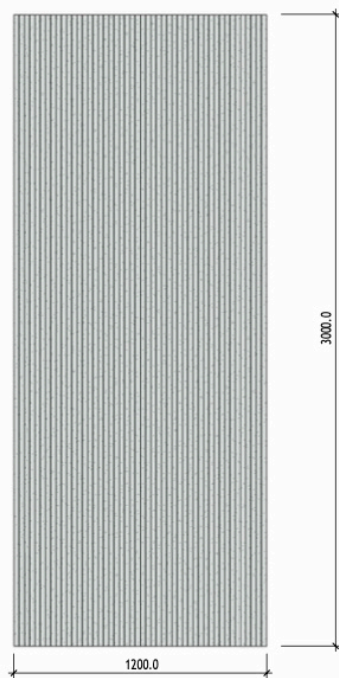
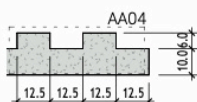
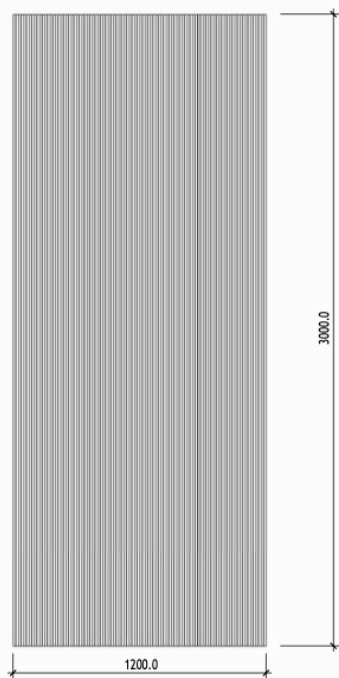
Crag S

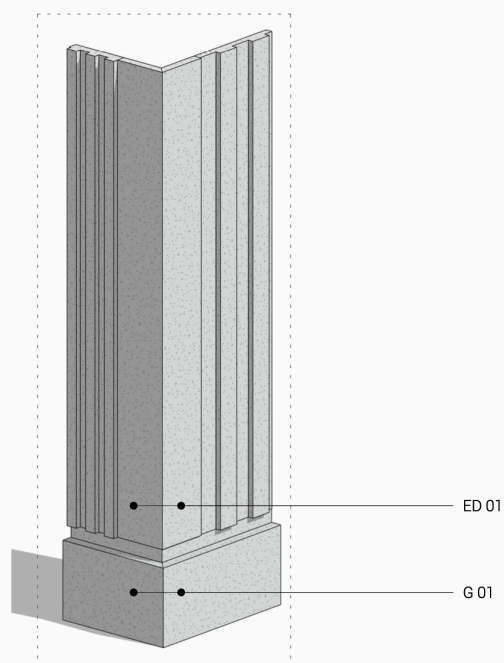
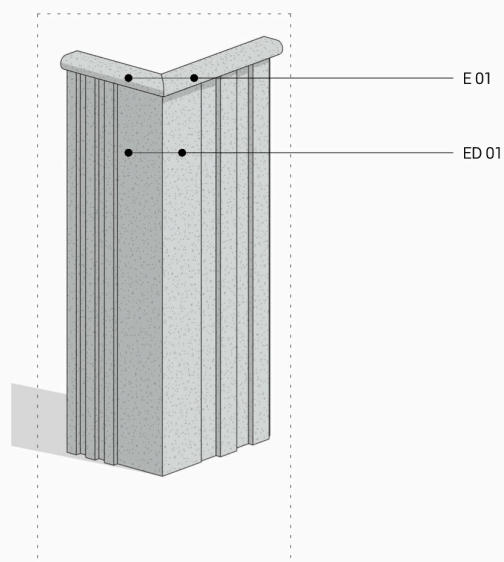
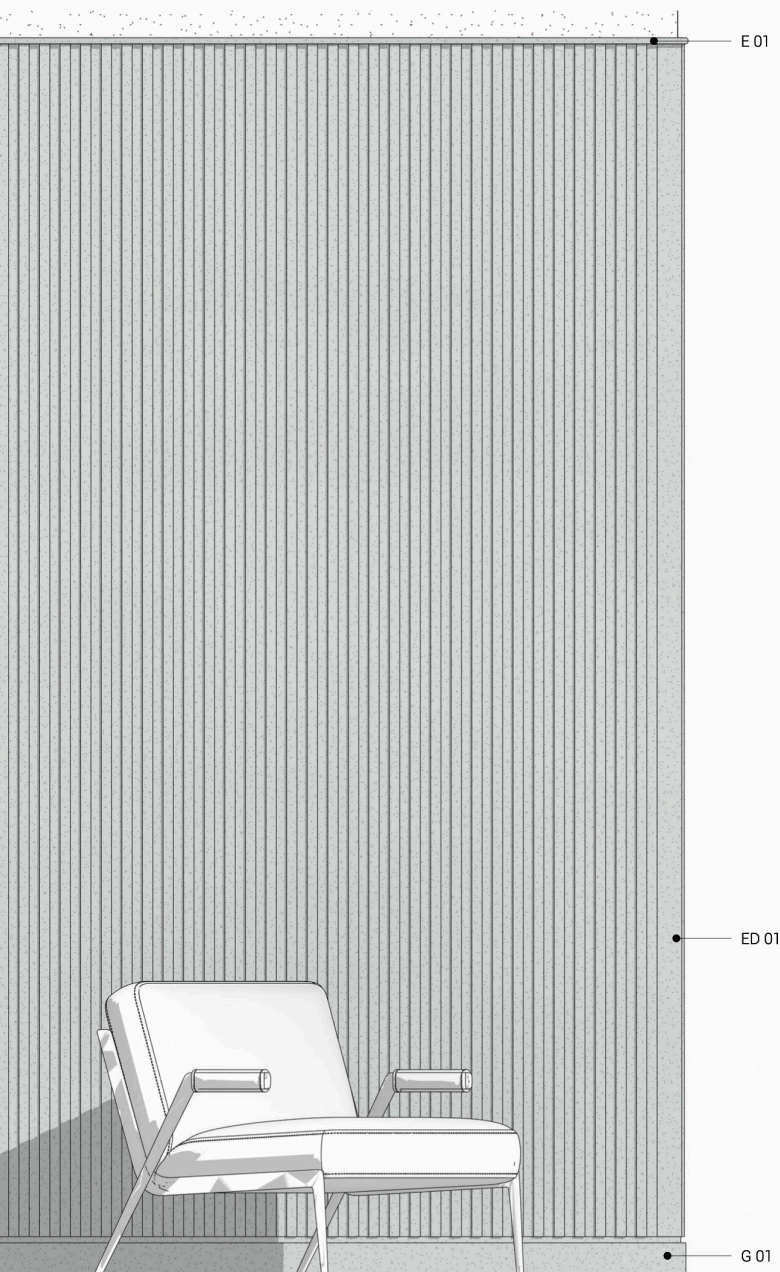


Crag M

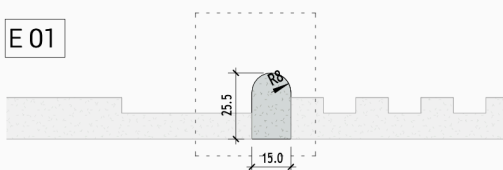


Crag L

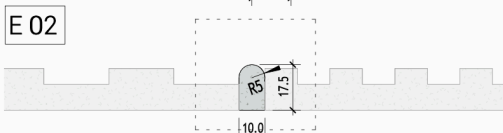




E 01

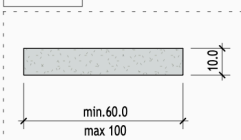


E 02



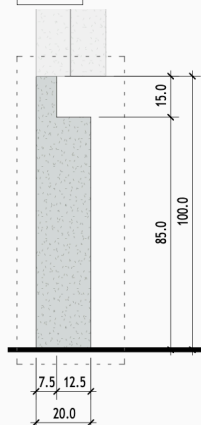
**\*\*DECORATIVE ELEMENT. CAN BE USED AS A CONNECTOR FOR DIFFERENT PANELS, AS WELL AS AS A FINAL ELEMENT. MIN LENGTH 150MM, MAX 2600MM**

ED 01

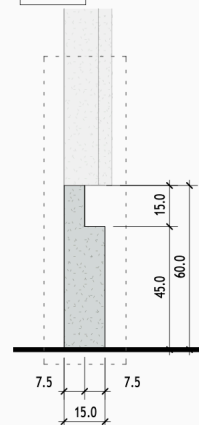


**\*\*VERSATILE ELEMENT. HEIGHT FROM MIN. 150MM TO 2600MM**

G 01



G 02



**\*\*COMPATIBLE WITH ALL PANELS. SKIRTING MIN LENGTH 150MM, MAX 2600MM**





# TECHNICAL DATA

FEATURE	SPECIFICATION
Dimensions	Standard: 2400mm x 1000mm; Custom lengths up to 3000mm, width up to 1200mm
Thickness	12.5-20.1 mm (depending on design)
Weight	14-20 kg/m <sup>2</sup>
Material	Homogeneous material consisting of concrete, fiberglass strands, recycled glass, and fiberglass mesh
Fire Rating	A2-s1, d0 (European Classification)
VOC Emissions	None
Adhesive	Adhesive bonding (Zwaluw Panelfix® or Hybrifix 550 DEN BRAVEN)
Substrates	Can be glued to all substrates
Cutting	With a diamond blade
Thermal schock	Resistant
Applications	Interior and exterior walls, including wet areas (bathrooms, kitchens)
Textures	Variety of 3D textures, including custom options
Colors	Wide range of standard colors; custom color matching available
Sealer	Anti-dust (standard), Water repellant (optiona)
Maintenance	Regular dusting; clean with mild detergent and water
Sustainability	Up to 80% recycled materials; Recyclable as aggregate
Acoustic	Neutral



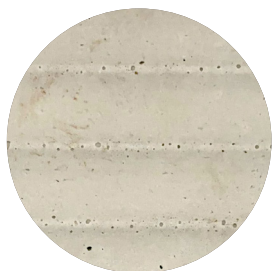
We design your WOW



# FINISHES AND COLOURS

## Finishes

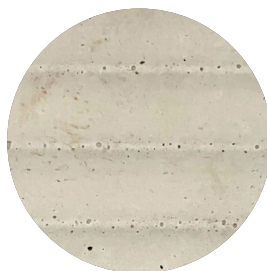
Light pitted



Medium pitted



Concrete finish

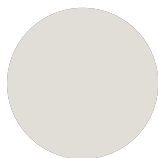


Stone finish

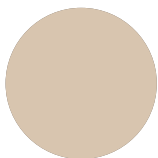


## Colours

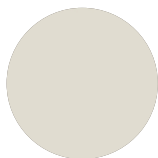
Voile 000B



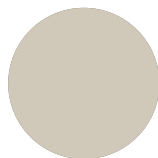
Beige Melisse 027C



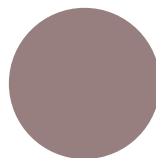
Coton 027B



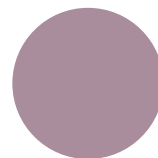
Corde 027C



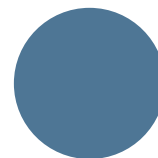
Bagatelle 099E



Vieux rose jalla  
117E



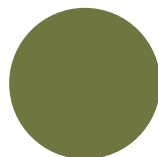
Outremer 162F



Sauge 315D



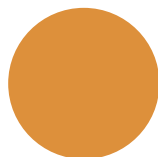
Cactus 335E



Ombre 351E



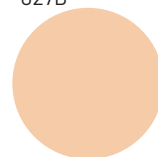
Ibis 018D



Beige 018C



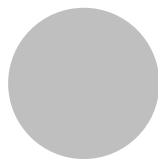
Rose des sables  
027B



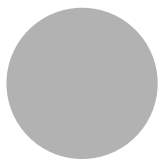
Gris cendre' IV C



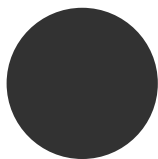
Fossile IV D



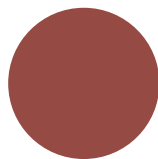
Gris souris VII D



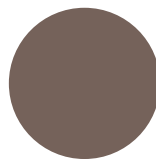
Adroise XVII F



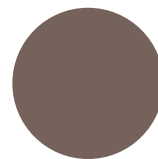
Hacienda 081F



Brun 045F



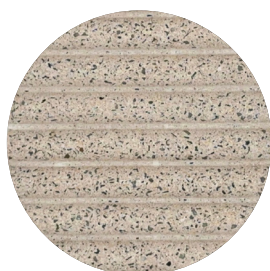
Sinai 045F





## Terrazzo finishes

Terrazzo exposed

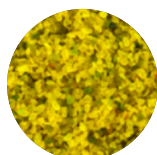


Terrazzo natural



## Terrazzo aggregates

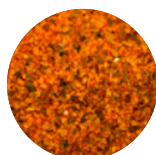
Neon yellow



Sunny yellow



Yellow orange



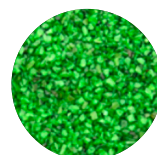
Oxide red



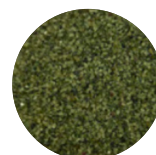
Tarffic red



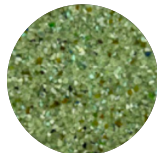
Leafy green



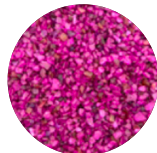
Olive green



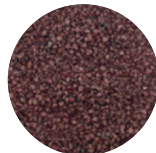
Pale green



Lavander violet



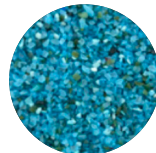
Mahogany brown



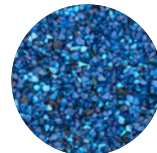
Pale brown



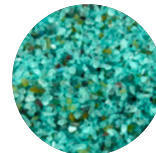
Sky blue



Royal blue



Turquoise



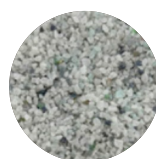
Pitch black



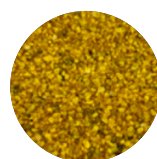
Silver grey



Matt white



Gold



Bronze





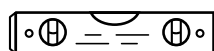
# INSTALLATION TOOLS



Protective  
gloves



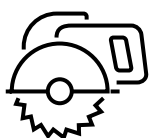
Protective  
glasses



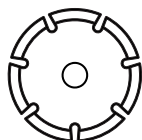
Level \Rule



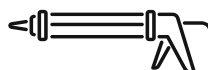
Dust mask



Circular saw &  
guide rail



Diamant blade\*



Glue gun



Glue Hybrifix  
550 Den Braven  
Sealants  
(recommended)

# INSTALLATION STEPS

1.



**Clean the area  
before the installation**

2.



**Take wall measurements  
before cutting the panel**

3.



**Copy your measurements  
on the panel**

4.



**Cutting with the use  
of a guide rail**

5.



**Apply glue on the  
wall (or on the back  
of the panel)**

6.

**Place the panel starting  
with the bottom**

Contact Us



**Contact Us**

MURAALI DESIGNS

Phone: +371 29842005

Email: [elmars@muraalidesigns.com](mailto:elmars@muraalidesigns.com)

Website: [www.muraalidesigns.com](http://www.muraalidesigns.com)

Address: Riga, Latvia, EU

We design your WOW





# GENERAL CONDITIONS OF SALE

## **1. Validity of the Price List**

This price list supersedes all previous quotations, regardless of form, and is subject to change without prior notice. The most current product information, including pricing, is available in the latest version of our price list.

## **2. Orders**

Placement of an order constitutes the Customer's acknowledgment and acceptance of these General Conditions of Sale. An order is deemed accepted by Muraali Designs only upon the Customer's receipt of our order confirmation.

## **3. Product Variations**

Due to the inherent characteristics of concrete, color samples are indicative. Variations in shade and texture may occur between samples and the final product, and between different production batches. Muraali Designs does not accept responsibility for such variations and cannot guarantee a perfect match between goods purchased at different times. The Customer's order acknowledges acceptance of these tolerances.

Muraali Designs products may exhibit slight variations and finishing nuances, which are characteristic of the material and the production process. These are not considered defects but rather unique aesthetic qualities.

## **4. Product Use in Soft-Outdoor Environments**

When Muraali Designs products are not in use, we recommend storing them in a cool, dry, well-ventilated indoor environment. Please consult the specific product care guidelines for detailed information.

## **5. Product Modifications**

Muraali Designs reserves the right to modify the design, materials, and finishes of its products, or to discontinue any item, without prior notice, as deemed necessary. Requests for non-standard product specifications (dimensions, finishes, colors) will be evaluated on a case-by-case basis, and any associated costs will be communicated to the Customer. Advance payment is required for non-standard orders.

## **6. Returns and Claims**

Muraali Designs warrants that its products are free from defects within the limits of applicable technical specifications and normal tolerance margins. Product returns will only be accepted with prior written authorization from Muraali Designs and must be returned to our designated warehouse at the Customer's expense. Returned goods must be in their original, undamaged packaging (both internal and external).

Any claims must be submitted to Muraali Designs in writing within eight (8) calendar days of the Customer's receipt of the goods. Failure to provide written notification within this timeframe will constitute full acceptance of the products.

## **7. Special Packaging**

Customers may request special packaging in addition to the standard packaging provided for each item. A minimum charge of €50.00 will apply.



## 8. Shipping and Delivery

The Customer is responsible for verifying that the number of packages received matches the quantity indicated on the shipping documents, and that the packaging and products are intact and undamaged. Any discrepancies in package count or product damage must be reported to the carrier or shipper upon delivery, and no later than seven (7) calendar days after receipt of goods accepted "with reserve." Muraali Designs will not accept claims for unreported damage or discrepancies.

Unless otherwise specified, prices are ex works, excluding VAT. Upon the Customer's request, Muraali Designs can provide a quotation for shipping, including delivery to a specified location.

## 9. Delivery Terms

Delivery dates provided in order confirmations are estimates and represent the date of delivery to the carrier. Muraali Designs will not be liable for any claims for compensation or damages due to delivery delays or non-delivery within these estimated timeframes.

## 10. Payment Terms

Payment terms are specified in the order confirmation. Payments must be made to Muraali Designs as indicated. Payments made to third parties without written authorization from Muraali Designs will not be accepted.

Muraali Designs reserves the right to suspend product supply if the Customer is delinquent in payment or if their financial condition impairs their ability to fulfill payment obligations. In the event of payment default, Muraali Designs may demand immediate payment of the entire outstanding amount.

The Customer may not suspend, delay, withhold, or offset payments, even in the event of a dispute, claim, or delivery delay by Muraali Designs. Muraali Designs reserves the right to charge overdue invoice balances, including collection costs and default interest, as permitted by applicable law. The Customer is responsible for all bank charges.

## 11. Title Retention

Ownership of the products will transfer from Muraali Designs to the Customer only upon full, irrevocable, and unconditional payment of the entire amount due. Until full payment is received, the products remain the property of Muraali Designs, unless otherwise agreed in writing by both parties.

## 12. Data Protection

Customer data will be collected, stored, and processed by Muraali Designs (data controller), in both paper and electronic formats, to fulfill legal obligations, including accounting and tax matters, and for statistical and commercial purposes, in accordance with all applicable data protection regulations. Submission of a purchase order implies consent to the processing of data for the aforementioned purposes.

## 13. Installation Instructions

- **Lifting:** Panels should be lifted by two or more people. Carry panels vertically, never horizontally.
- **Surface Preparation:** Ensure the application surface is clean, dry, level, and structurally sound. Remove any loose material, dust, or debris.
- **Adhesive Application:** Use a high-quality adhesive recommended by Muraali Designs, applying it evenly to the back of the panel according to the adhesive manufacturer's instructions.





- **Panel Placement:** Carefully position the panel and apply firm, even pressure to ensure proper adhesion. Use spacers to maintain consistent joint widths.
  - **Cutting and Drilling:** Use appropriate tools (diamond blade for cutting, masonry drill bits for drilling) and follow safety guidelines.
- Joint Treatment: If required, fill joints with a suitable sealant or grout, following the manufacturer's instructions.
- **Curing:** Allow the adhesive or sealant to cure completely before applying any loads or finishes to the panels.

#### 14. Installation Safety Instructions

- **Personal Protective Equipment (PPE):** Always wear appropriate PPE, including safety glasses, gloves, and a dust mask, when handling, cutting, or installing concrete panels.
- Lifting Safety: Use proper lifting techniques and equipment to avoid back injuries or dropping panels.
- **Cutting Safety:** When using power tools, follow all manufacturer's safety instructions and wear hearing protection. Work in a well-ventilated area to minimize dust exposure.
  - **Dust Control:** Concrete dust can be harmful. Use dust suppression methods or tools with dust collection systems whenever possible.
  - **Handling with Care:** Concrete panels can be heavy and fragile. Handle them with care to prevent breakage or damage.

#### 15. Maintenance

- **Regular Cleaning:** Dust panels regularly with a soft, dry cloth or brush.
- **Stain Removal:** Clean spills immediately with a damp cloth and mild soap solution. Avoid abrasive cleaners, acids, or solvents, as these may damage the panel surface.
- **Sealing:** Depending on the specific panel and application, periodic sealing may be required to enhance stain resistance and protect the finish. Consult Muraali Designs for recommended sealing products and procedures.

#### 16. Governing Law

These General Conditions of Sale shall be governed by and construed in accordance with the laws of Latvia.

#### Contact Us



#### Contact Us

MURAALI DESIGNS

Phone: +371 29842005

Email: [elmars@muraalidesigns.com](mailto:elmars@muraalidesigns.com)

Website: [www.muraalidesigns.com](http://www.muraalidesigns.com)

Address: Riga, Latvia, EU