

fitwall®

Fitwall® panels are produced from a unique mixture of different materials. The balance between these elements is decisive for achieving the maximum performance in their use.

In their composition, Fitwall® panels incorporate a mineral load of over 50% with a high technical value, which contribute distinctive properties with regard to:

- Reduced use of resin in manufacturing.
- Improved flame retardant properties of the panel.
- Resistance and flexibility throughout the panel.

Finally, the inorganic pigments, acidic enamel and water-based dyes give Fitwall® panels a great natural appearance.



MINIMUM 3% RECYCLED CONTENT POST INDUSTRIAL AND/OR POST-CONSUMER

SCS Global Service, a leading North American independent entity in environmental certifications, has verified that Fitwall® panels contain a minimum of 3% PET in their composition, largely from recycled plastic waste, thereby demonstrating commitment to more sustainable and environmentally friendly production.

EN

KRION
PORCELANOSA Grupo

Ctra. Vila-real-Puebla de Arenoso (CV20) Km 1 · 12540 VILA-REAL (CASTELLÓN) SPAIN
PO/BOX. 372 - Tel: (+34) 964 50 64 64 Fax: (+34) 964 50 64 81
krion@krion.com / www.krion.com

fitwall®
MINERAL DECORATIVE PANELS

2023 COLLECTION

fitwall®
MINERAL DECORATIVE PANELS



Fitwall® panels are decorative coverings which can recreate textures and volumes with great realism to the eye and to the touch. Designed for covering vertical facings of walls, units and commercial and residential fittings, they can also be installed on ceilings and horizontal coverings such as non-functional decorative elements.

The composition of the panels has been developed exclusively by Krion Porcelanosa Group. This material contains a large quantity of minerals, bonded with resin which incorporates recycled PET. Thanks to this composition, Fitwall® offers good safety performance in fire resistance, impermeability and low emission of volatile organic compounds.



Mineral composition



100% realistic finishes



Light weight



Flexibility



Resiste Impact



Fire resistance



Dry construction



Resistance to dry heat



Repairable



Reusable

PUTTIES AND DYES

In the majority of Fitwall® series, concealing joints, as with fixings, is achieved using specific putty and paint supplied by KRION.



Concrete Series

Wave



Wave · White Sand Wave · Ocre Sand Wave · Grey Sand

Arco



Arco · White Sand Arco · Ocre Sand Arco · Grey Sand

Rolling



Rolling · White Sand Rolling · River Sand Rolling · Ocre Sand Rolling · Velvet Black

Cotto Series

Mattoni



Mattoni · Rosso Mattoni · Crudo Mattoni · Antracite Mattoni · Bianco

Mattonella



Mattonella · Paglierino Mattonella · Rosato Mattonella · Anticato Mattonella · Bruciato



Mattonella · White Clay

Wood Series

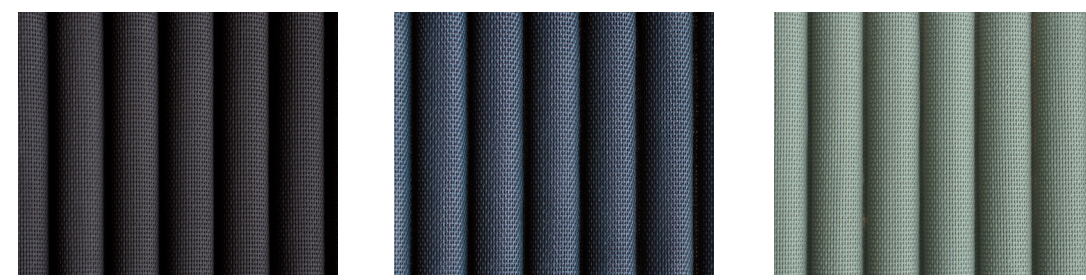
Doghe



Doghe · Nogal Americano Doghe · Roble Murano Doghe · Roble Natura

Creative Series

Willow



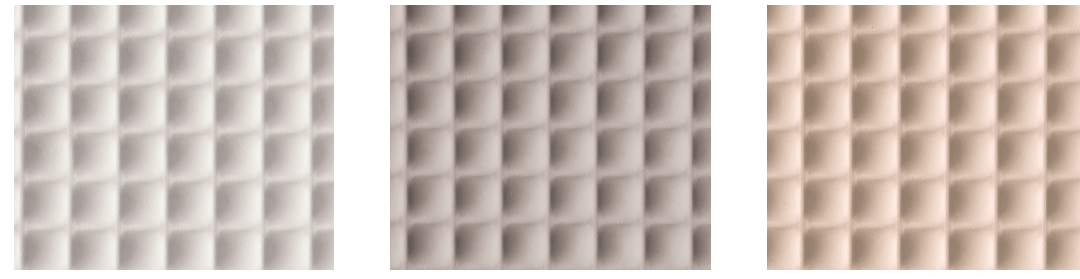
Willow · Velvet Black Willow · Velvet Blue Willow · Velvet Green

Palm



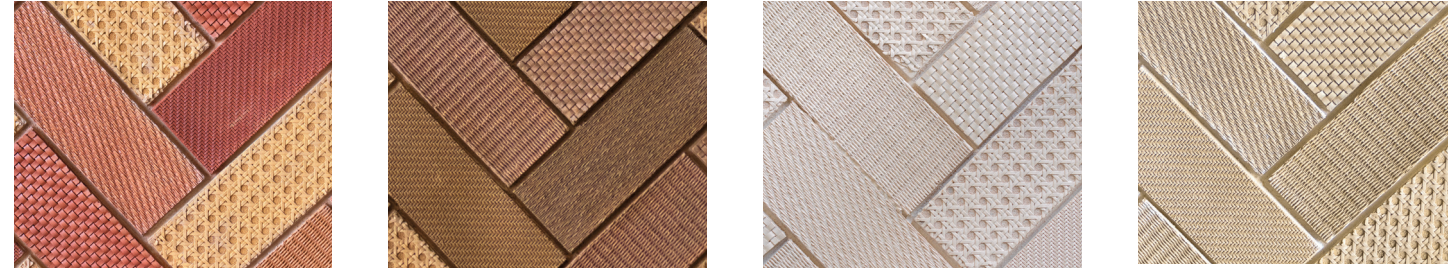
Palm · Caribbean Palm · Mediterranean

Shades



Shades · White Sand Shades · Dark Sand Shades · Vanilla Sand

Oz



Oz · Red Clay Oz · Yellow Clay Oz · White Clay Oz · Mediterranean



Oz · Velvet Brown

Stone Series

Mur



Mur · Rock White Mur · Rock Cream

PANEL		PAINT				
Wave	1295 x 2590	100314038	BR	P001 100 ml	100294247	
White Sand (*) (*)	1295 x 3290	100287549	B	P001 300 ml	100287838	
Wave	1295 x 2590	100314054	BR	P004 100 ml	100294290	
Ocre Sand (*) (*)	1295 x 3290	100293371	B	P004 300 ml	100294331	
Wave	1295 x 2590	100314121	BR	P007 100 ml	100294265	
Grey Sand (*) (*)	1295 x 3290	100293337	B	P007 300 ml	100294314	
Arco	1185 x 2590	100314068	BR	P001 100 ml	100294247	
White Sand (*) (*)	1185 x 3290	100293356	B	P001 300 ml	100287838	
Arco	1185 x 2590	100314076	BR	P004 100 ml	100294290	
Ocre Sand (*) (*)	1185 x 3290	100293299	B	P004 300 ml	100294331	
Arco	1185 x 2590	100314064	BR	P007 100 ml	100294265	
Grey Sand (*) (*)	1185 x 3290	100293381	B	P007 300 ml	100294314	
Rolling	1295 x 2590	100314071	AR	P001 100 ml	100294247	
White Sand (*) (*)	1295 x 3290	100293357	A	P001 300 ml	100287838	
Rolling	1295 x 2590	100314114	AR	P026 100 ml	100294254	
River Sand (*) (*)	1295 x 3290	100293279	A	P026 300 ml	100294324	
Rolling	1295 x 2590	100314113	AR	P004 100 ml	100294290	
Ocre Sand (*) (*)	1295 x 3290	100293333	A	P004 300 ml	100294331	
Rolling	1295 x 2590	100314130	AR	P013 100 ml	100294235	
Velvet Black (*) (*)	1295 x 3290	100293370	A	P013 300 ml	100294330	
Mattoni	Rosso (*) (*)	3220 x 1300	100318212	B	P031 100 ml	100331834
					P031 300 ml	100331870
					P032 100 ml	100331827
					P032 300 ml	100331863
					T020 100 ml	100294237
T020 300 ml	100294333					
Mattoni	Crudo (*) (*)	3220 x 1300	100318215	B	P040 100 ml	100331826
					P040 300 ml	100331862
					P041 100 ml	100331807
					P041 300 ml	100331853
					P042 100 ml	100331833
P042 300 ml	100331839					
T020 100 ml	100294237					
T020 300 ml	100294333					
Mattoni	Antracite (*) (*)	3220 x 1300	100318241	B	P037 100 ml	100331818
					P037 300 ml	100331873
					P038 100 ml	100331828
					P038 300 ml	100331865
					P039 100 ml	100331806
P039 300 ml	100331838					
T020 100 ml	100294237					
T020 300 ml	100294333					
Mattoni	Bianco (*) (*)	3220 x 1300	100318235	B	P030 100 ml	100331832
					P030 300 ml	100331861
Mattonella	Paglierino (**)	1145 x 2595	100314066	BR	P009 100 ml	100294273
					P009 300 ml	100294315
					P010 100 ml	100294234
					P010 300 ml	100294342
Mattonella	Rosato (**)	1145 x 2595	100314085	BR	P014 100 ml	100294228
					P014 300 ml	100287817
					P015 100 ml	100294236
					P015 300 ml	100294340
Mattonella	Anticato (**)	1145 x 2595	100314084	BR	P016 100 ml	100294248
					P016 300 ml	100294312
					P018 100 ml	100294271
					P018 300 ml	100294323

PUTTY

* Fitmastic Rough + Activator

** Fitmastic Fine + Activator

* AquaFitmastic Rough

PANEL		PAINT				
Mattonella	Bruciato (**)	1145 x 2595	100314092	BR	P007 100 ml	100294265
					P007 300 ml	100294314
					P008 100 ml	100294282
					P008 300 ml	100294327
Mattonella	White Clay (**)	1145 x 2595	100314065	BR	P025 100 ml	100287862
					P025 300 ml	100294400
Doghe	Nogal Americano (**)	1285 x 2590	100314086	CR	T020 100 ml	100294237
					T020 300 ml	100294333
Doghe	Roble Murano (**)	1285 x 2590	100314075	CR	T019 100 ml	100294272
					T019 300 ml	100294332
Doghe	Roble Natura (**)	1285 x 2590	100314093	CR	T021 100 ml	100294281
					T021 300 ml	100294353
Willow	Velvet Black (**)	1285 x 2590	100314094	CR	P013 100 ml	100294235
					P013 300 ml	100294330
Willow	Velvet Blue (**)	1285 x 2590	100314096	CR	P028 100 ml	100294280
					P028 300 ml	100294352
Willow	Velvet Green (**)	1285 x 2590	100314100	CR	P027 100 ml	100294263
					P027 300 ml	100294325
Palm	Caribbean (**)	1183 x 2532	100314101	CR	P017 100 ml	100294270
					P017 300 ml	100294322
					P009 100 ml	100294273
					P009 300 ml	100294315
Palm	Mediterranean (**)	1183 x 2532	100314079	CR	P011 100 ml	100294219
					P011 300 ml	100294334
Shades	White Sand (*) (*)	2520 x 1228	100314120	AR	P001 100 ml	100294247
					P001 300 ml	100287838
Shades	Dark Sand (*) (*)	2520 x 1228	100314102	AR	P029 100 ml	100304388
					P029 300 ml	100304355
Shades	Vanilla Sand (*) (*)	2520 x 1228	100314110	AR	P010 100 ml	100294234
					P010 300 ml	100294342
Oz	Red Clay (**)	1230 x 3085	100293435	A	P014 100 ml	100294228
					P014 300 ml	100287817
					P016 100 ml	100294248
					P016 300 ml	100294312
					P022 100 ml	100294261
P022 300 ml	100294350					
P018 100 ml	100294271					
P018 300 ml	100294323					
P017 100 ml	100294270					
P017 300 ml	100294322					
Oz	Yellow Clay (**)	1230 x 3085	100293444	A	P018 100 ml	100294271
					P018 300 ml	100294323
					P022 100 ml	100294261
					P022 300 ml	100294350
Oz	White Clay (**)	1230 x 3085	100293424	A	P025 100 ml	100287862
					P025 300 ml	100294400
Oz	Mediterranean (**)	1230 x 3085	100293434	A	P011 100 ml	100294219
					P011 300 ml	100294334
Oz	Velvet Brown (**)	1230 x 3085	100293441	A	P008 100 ml	100294282
					P008 300 ml	100294327
Mur	Rock White (*) (*)	3260 x 1290	100318213	B	P033 100 ml	100331816
					P033 300 ml	100331841
					P034 100 ml	100331808
					P034 300 ml	100331871
Mur	Rock Cream (*) (*)	3260 x 1290	100318204	B	P035 100 ml	100331817
					P035 300 ml	100331872
					P036 100 ml	100331809
					P036 300 ml	100331864