

KAVA



by tomas and jani



Human. Sustainable. Beautiful.



Coffee is so much
more than a drink.

It's at the centre of life's special moments.

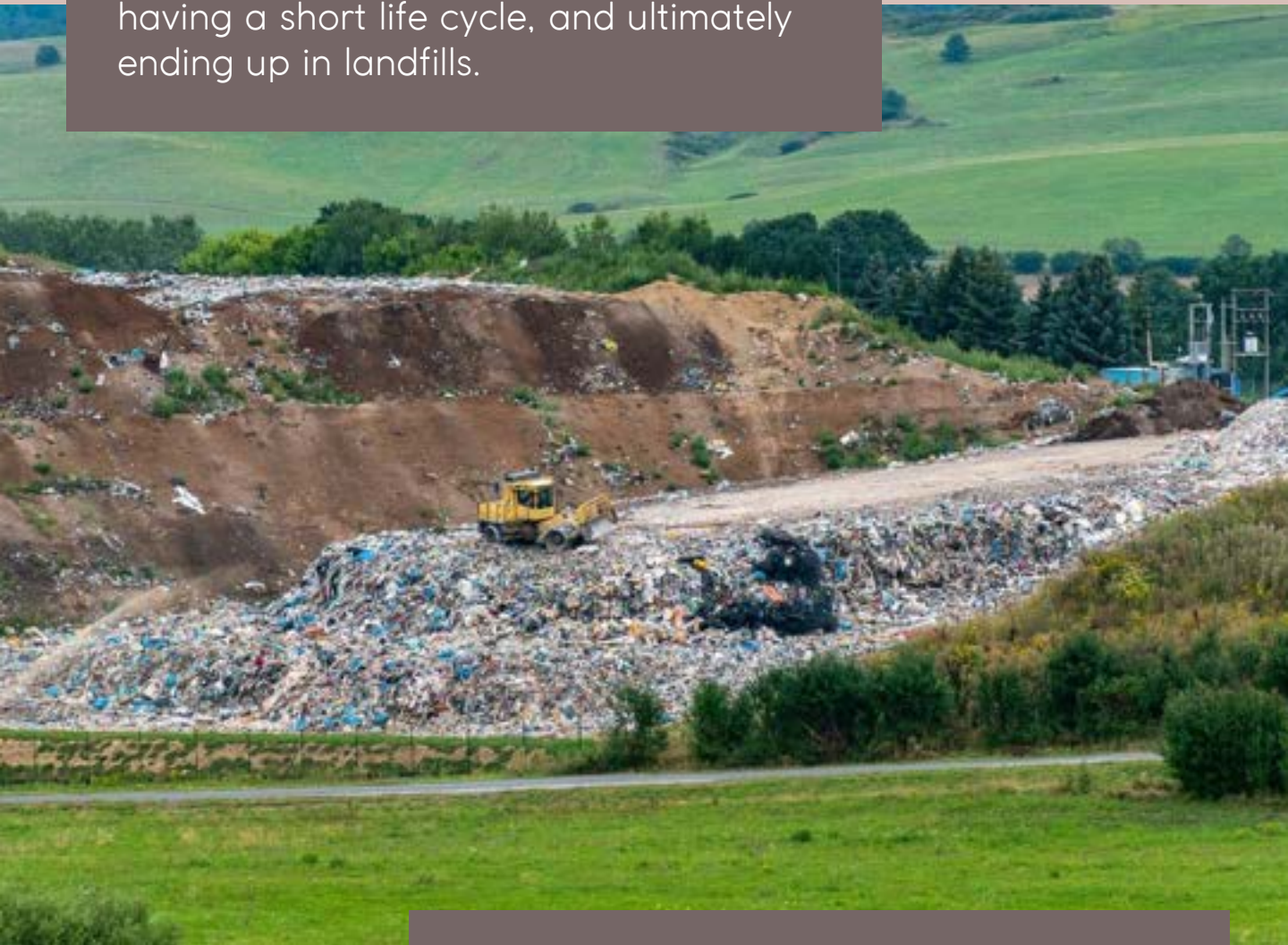
Meeting new friends, catching up with old ones, fuelling
your day, or bringing a moment of calm.

But have you considered that your cup of coffee could
be the start of a new story?

We thought it could be.

For a long time, we felt disheartened by the volume of waste associated with the interior design industry.

We wanted to find a way to address the issue of cheaply produced materials being shipped from other countries, having a short life cycle, and ultimately ending up in landfills.

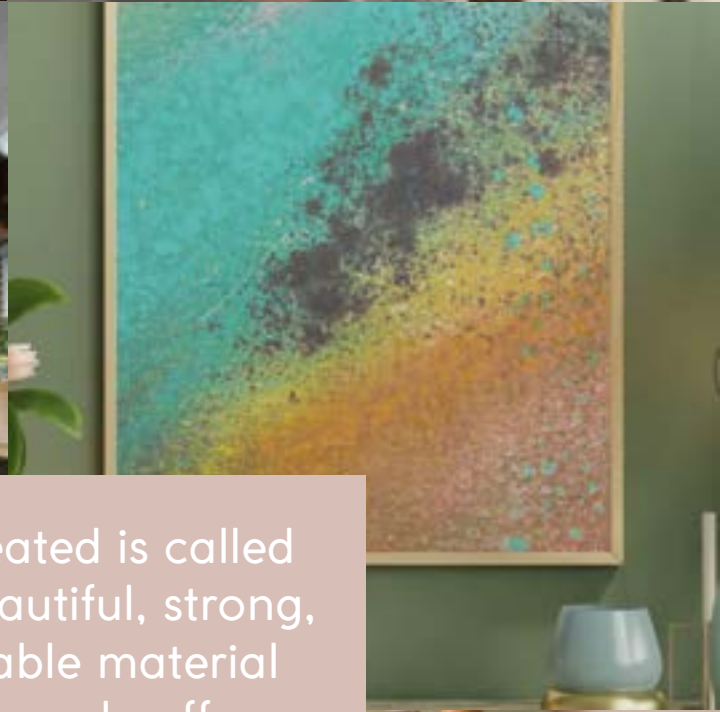


Coffee grounds are one of these things.

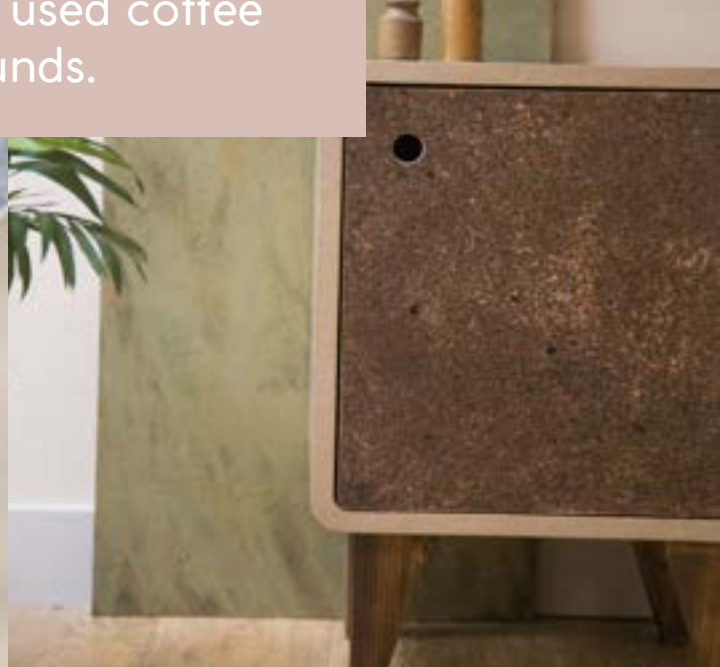
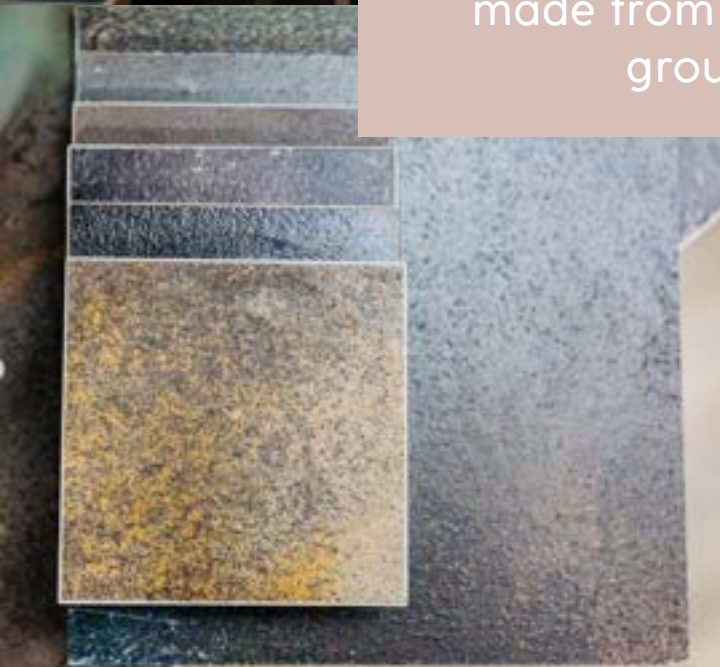
Coffee is the second most traded product in the world, after petroleum. Surely there had to be a way to utilise this abundant raw material?



Maybe we could give it a new lease of life and solve the interior design industry's waste problem at the same time?



What we created is called **KAVA** – a beautiful, strong, and sustainable material made from used coffee grounds.





Fast-forward to today, and we regularly collect natural waste from coffee shops across Brighton.

Combined with natural, plastic-free resins, the material is transformed into boards, panels, counters, and tables. It's then ready to host thousands of special moments over a fresh cup of coffee, starting new stories and kicking off the cycle again.





We love our planet, and have proved we can work with the resources we already have.

A cup of coffee can be the start of a new story... and there are so many more stories left to tell.



RECENT CLIENTS

F U M I
JAPA章NESE



WOLFOX
ORGANIC COFFEE ROASTERS



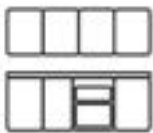
SHEETS

KAVA is an organic, plastic-free composite material made from coffee waste. We create it using a combination of coffee waste and other organic fibers such as powdered fruit stone or crushed argan and walnut shell. This specialist combination is pressed onto chipboard or plywood with our unique formulation of natural binders.

Applications



Wall panelling



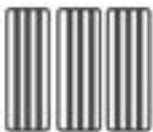
Kitchen surfaces



Commercial surfaces



Hospitality surfaces



Acoustic panels

Key Features

- ✓ High quality, hygienic and odour free surface
- ✓ Architecturally multi-functional use
- ✓ Surface is resistant to commonly used chemicals, UV rays and surface impact.
- ✓ Easy to clean
- ✓ Long life sustainable product that can be easily recycled at end of life, unlike plastic alternatives
- ✓ Closed loop manufacture

Sizes

610 x 1220mm in 6.5mm, 12mm and 18mm thickness (nominally)

1220 x 2440mm in 6.5, 12 and 18mm thickness (nominally)

620 x 3000 (max) x 36mm thickness

Available by the meter.

SHEETS

We achieve a range of different colours and textures by using organic powders or by-products such as fruit stone, ground metals, powdered marble, charcoal dust and natural pigments.

Bespoke colours are available on request.

Standard Colours



Husk



Coffee



Peach Stone

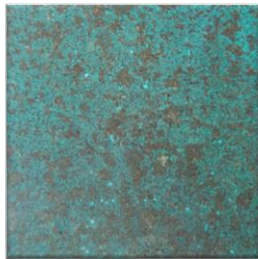


Turmeric Husk

Special Colours



Alabaster



Blue



Bronze



Copper



Charcoal

PORTFOLIO

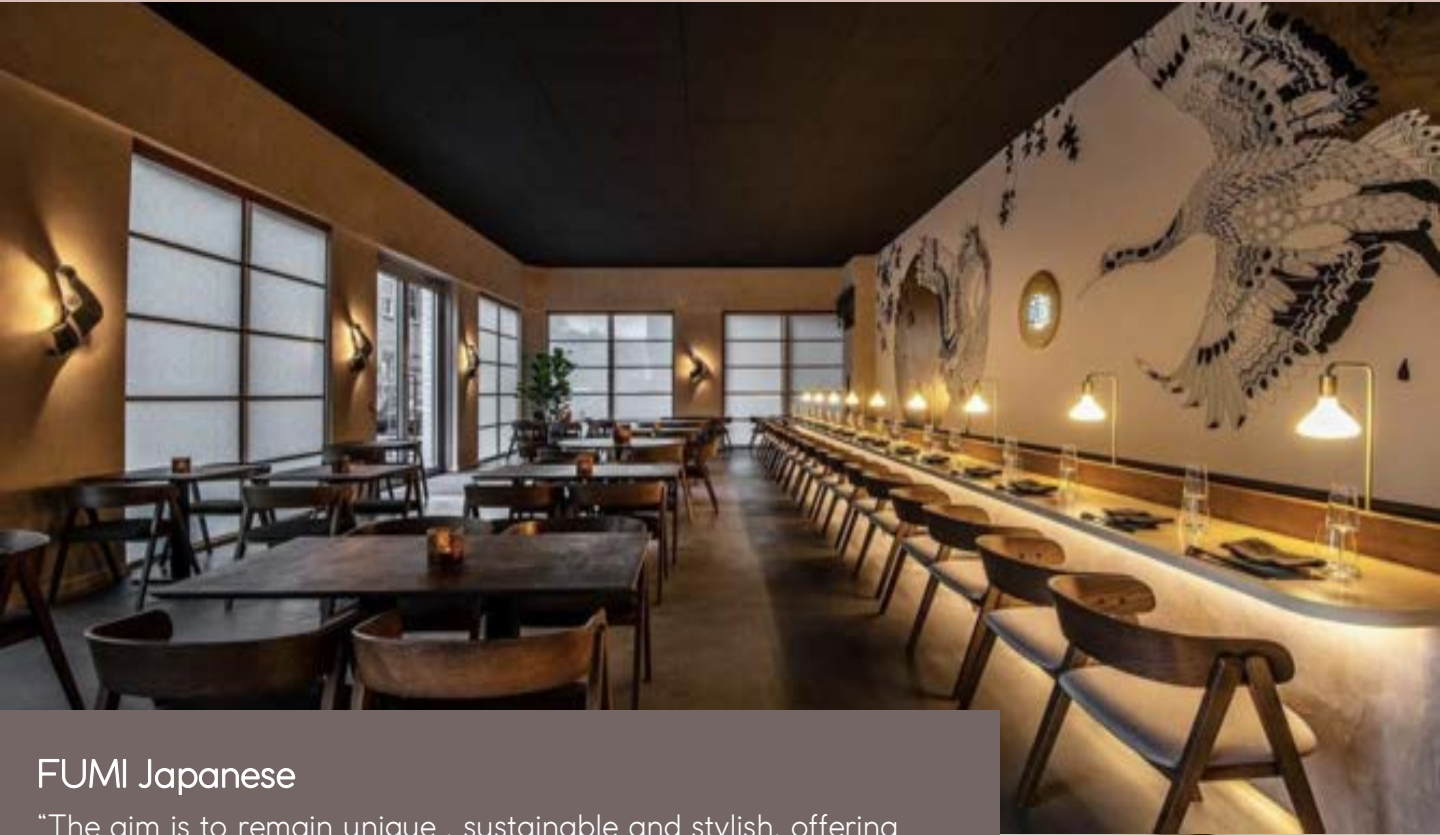


Rockett St George

We were commissioned by Rockett St George to design and make a sustainable collection for their online shop. Materials consisted of recycled coffee grounds, reclaimed pallet bearers, and recycled paper. The furniture was later used to dress The Arbour Project, a carbon negative housing scheme.



PORTFOLIO



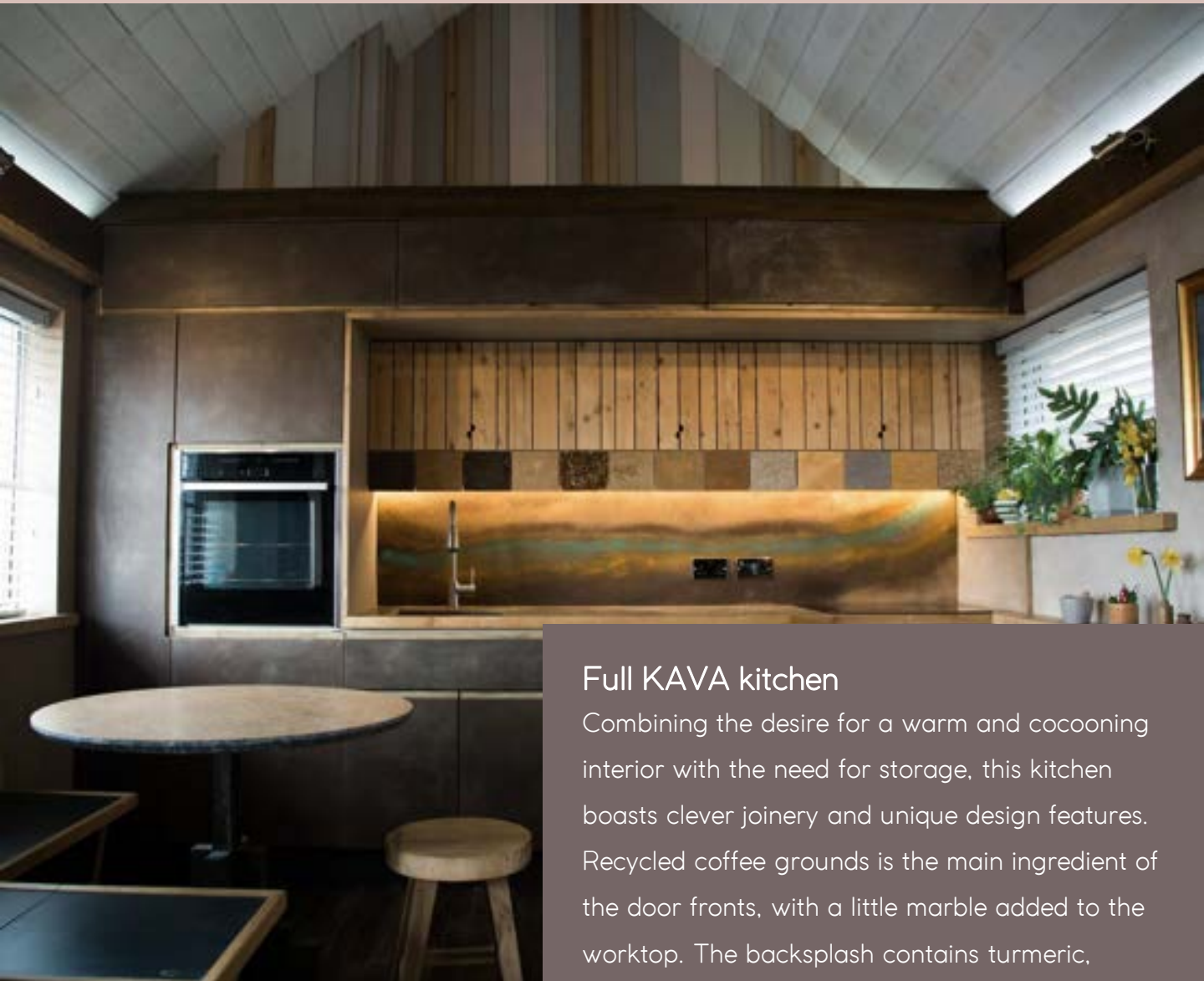
FUMI Japanese

"The aim is to remain unique , sustainable and stylish, offering clients a creative and practical, but ultimately very personal, design service. FUMI is bringing to Brighton a very local and sustainable concept created around its community".

Fabio Lauro, Concept Designer



PORTFOLIO



Full KAVA kitchen

Combining the desire for a warm and cocooning interior with the need for storage, this kitchen boasts clever joinery and unique design features. Recycled coffee grounds is the main ingredient of the door fronts, with a little marble added to the worktop. The backsplash contains turmeric, oxidised copper, chilli, argan shell, and peach stone.





Thank you!

KAVA
Unit B21, Bridge Farm
Barcombe Mills Road
Lewes
East Sussex
BN8 5BX

www.kavasurface.com
Instagram: @kavasurface