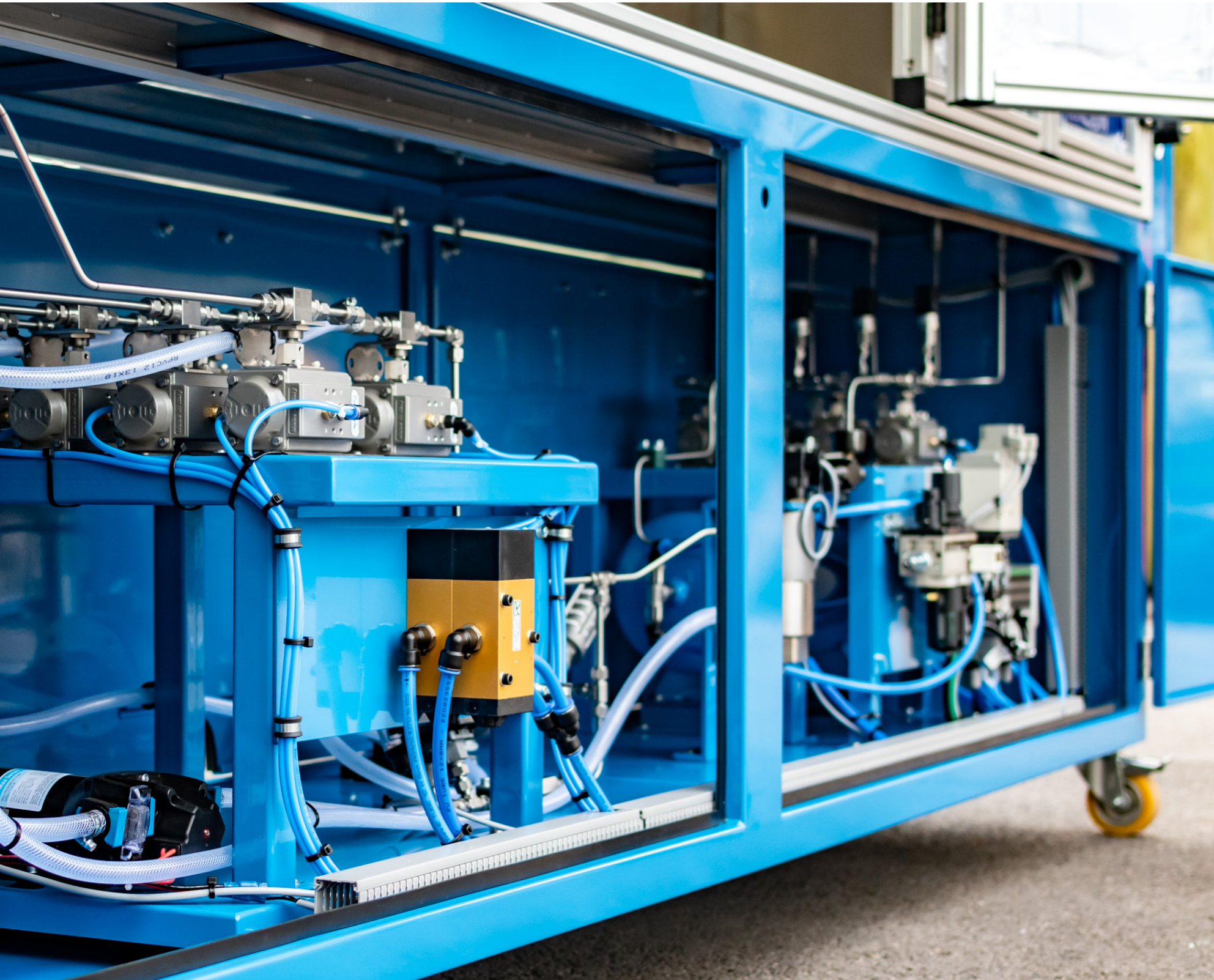




# Hydraulic, Pneumatic, Electrical and Mechanical Engineers & Suppliers





**Rotec Hydraulics has been supplying quality hydraulic and pneumatic solutions since 1979.**

**Unlike our competitors, we deliver fully integrated solutions with in-house expertise from electrical, mechanical, hydraulic and pneumatic disciplines.**

**Whether you need a custom design, an asset overhauled, an on-site repair, or an OEM kitting service - we have the solution for you.**

Trusted by those across all industry sectors, including defence, aerospace, marine, utilities and manufacturing. All of our projects are designed and built at our manufacturing facilities, located throughout the South West of the UK.

All our locations feature service centres fully equipped for maintenance, overhauls and repairs if on-site support is not appropriate. Our depots also incorporate ParkerStore trade counter outlets, providing a local go to source for hose, fittings, hydraulic and filtration products.

We are 'Q Approved' by the British Fluid Power Association (BFPA) for Hose Assemblies, deliver BFPA approved training, a Parker Accredited Hydraulic Technology Centre, Accumulator Recertification Centre and Certified Mobile Electrification Centre.

Independently audited by Achilles for UVDB, JOSCAR and SafeContractor registered, as well as holding ISO 9001 and 14001 accreditations demonstrates we take our processes, quality and environmental management systems seriously, business wide.



**Committed to building and maintaining strong and lasting client relationships, we are proud of our varied and loyal customer base.**

Our customer survey results are exemplary, with us consistently achieving in excess of 97% for outstanding customer satisfaction and technical support.

We believe our strong reputation has been achieved through providing consistently excellent technical support, products and engineering services, but also by our company's commitment to utilising and applying emerging technologies.

Unlike our competitors, we have grown our service deliverables to provide added value to our clients, and invested in technologies to stay ahead of the crowd.

"As a key supplier and integrated partner for over 20 years, Rotec's ability to navigate challenges is exceptional and their delivery of planned maintenance is consistently excellent."

*- Fleet Technical Specialist, National Grid*

"Rotec are always professional and do their utmost to meet our challenging deadlines. Highly recommend."

*- Electrical Manager, A&P*

"Rotec's procurement support and technical help has helped to ensure our project's success."

*- Senior Engineer, QinetiQ*



**Rotec has had a long history of strong links with innovative partners, perhaps the greatest example is that of Parker Hannifin - the global Fluid Power heavyweight.**

Our partnerships with companies like Parker and other key drivers for market development of new products has positioned Rotec as being able to offer a diverse range of services and products, alongside the ability to deliver cutting-edge technological advances.

We distribute and supply components and products from a wide selection of respected brands at competitive prices. Brands include **Galtech, Berama, Daman and Heypac.**

#### **PARKER HYDRAULIC TECHNOLOGY CENTRE**

As a certified Parker Hydraulic Technology Centre, we are part of Parker's global network of specialised distributors focusing on providing advanced hydraulic solutions and services. We offer a comprehensive range of hydraulic products, including pumps, motors, valves, cylinders, and systems, alongside expert technical support and services tailored to the needs of customers across various industries.



Part of the Rotec Group, we have a close relationship with Ram Reman, in Dorset, who specialise in the design, manufacture, repair or refurbishment of hydraulic rams and hydraulic cylinders to fit any brand of machinery. Their extensive workshops, lathes and milling machines enable the Ram Reman team to work on hydraulic cylinders, no matter what size or weight.



## MAINTENANCE, REPAIR & OVERHAULS

- On-site services
- Fully equipped workshops
- Accumulator Recertification and Test Centre
- Component stockist & distributor
- Project management

## TECHNICAL SUPPORT & DIAGNOSTICS

- In-house design team
- Fault diagnostics
- Contamination analysis
- Commissioning
- Certified Parker Hydraulic Technology Centre
- Provider of training courses
- Asset management

## PRODUCTION OPTIMISATION

- Hose & bespoke kitting service
- Fully integrated solutions (hydraulic, pneumatic, electrical & mechanical)
- Remote monitoring
- Service contracts
- On-line shop with next day delivery



## HOSE & FITTINGS

Any specification. Any size. Any application.

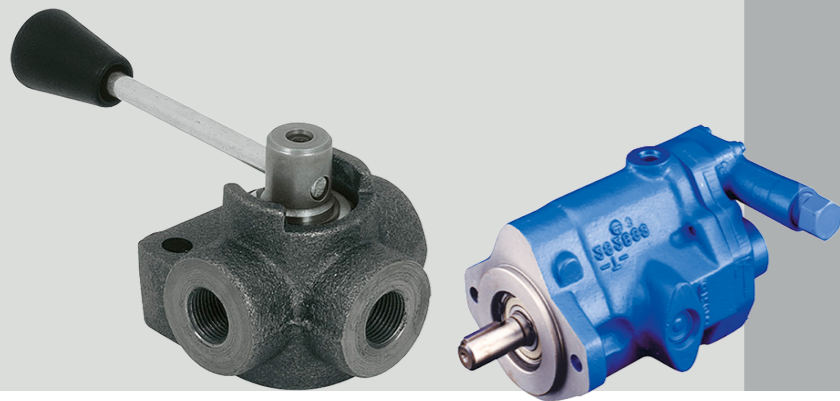
Q approved, we are a long-standing BFPA distributor member.

- Hose surveys
- Hose supply
- Hose assemblies
- Accessories inc. fittings, burst sleeve and more
- Keep track of your hose register with the PTS tracking system

## OEM KITTING SERVICE

Increase productivity.

- Bespoke kitting service
- Speed up your production line



## ONLINE CATALOGUE

Browse thousands of products online at [rotec-catalogue.co.uk](http://rotec-catalogue.co.uk).

Order by 10pm for next day delivery.

- Quality products
- Fast delivery



## TRAINING CENTRE

Up skill your team at our BFPA Approved Training Centre, located in Taunton, Somerset.

- Foundation safety courses
- Hose assembly skills course
- Hose integrity, inspection and management
- Small bore tubing integrity course

## INTEGRATED PIPEWORK SOLUTIONS

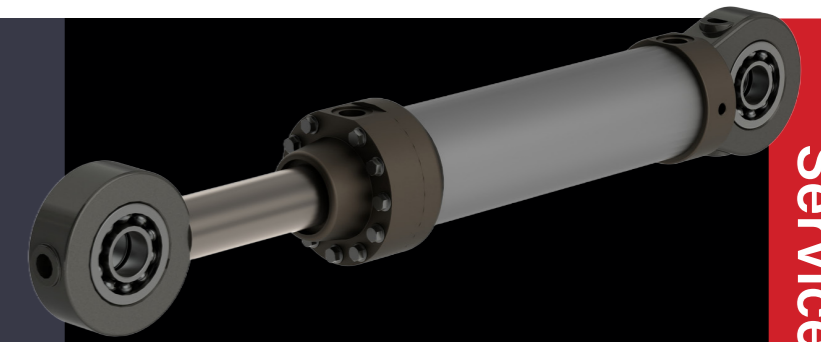
Whether it's an on-site survey, full hydraulic installation, regular servicing or a design and manufacture service, we can help you.

- On-site surveys
- Design & manufacture
- Installation
- Pipework flushing
- Regular servicing

## ACCUMULATORS

We are an approved Parker Accumulator Recertification and Test Centre, servicing all types and brands of accumulators.

- Regulatory compliance and certification
- Maintenance and pre-charging
- Accumulator replacement



## CYLINDERS

Design, manufacture and servicing of hydraulic cylinders.

- Planned maintenance
- Design and manufacture of new hydraulic cylinders
- Strip and inspect service
- Emergency repair



## CONTAMINATION MANAGEMENT & FILTRATION

Whether on-site or at our premises, we specialise in a plethora of maintenance capabilities.

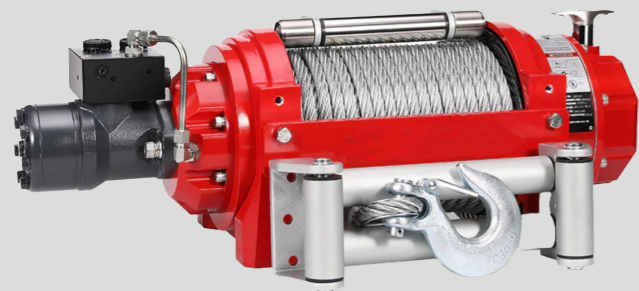
- Contamination analysis
- System flushing
- Filtration solutions



## REMOTE MONITORING

Harnessing the power of Internet of Things (IoT) technology, our technical team can design, install, code and commission remote monitoring systems on your equipment.

The advantages of being able to monitor, track and report key parameters, such as temperature, pressure and flow, are impressive - reductions in downtime, better response rates and speed of intervention for predictive maintenance.



## WINCH SYSTEMS

Rotec can design, manufacture, fit and test hydraulic and electrical winch systems.

We also offer winch servicing contracts.



## ASSET MANAGEMENT

Manage assets, retrieve product information and schedule service events worldwide using the Parker Tracking System (PTS).



## HYDRAULIC POWER UNITS

Rotec Hydraulics has been engineering, manufacturing, and supporting hydraulic power units of all types and sizes for over 45 years.

We engineer and manufacture quality custom power units to support every application.

## ELECTRIFICATION

Reducing the energy consumption of mobile machines involves a complex task of combining hydraulic, electrical and control technologies.

To meet these challenges, Rotec is pleased to hold **Parker Mobile Electrification Centre status**.

As such, we can offer Parker's SMART electrification solutions, which have a unique offering of hydraulic, electrical, control and cooler technologies and components designed to work as a coherent system in the harshest environments.

## HYDRAULIC & ELECTRO-MECHANICAL ASSET OVERHAULS

Specialising in the maintenance, repair and overhaul of hydraulic pumps, motors, cylinders, rotating equipment and integrated systems, our team of engineers offer thorough overhaul services to ensure your assets are working at their optimum capacity.

Proactively maintain your equipment to increase its lifespan and prevent costly repairs and downtime periods.

## TEST RIGS

We design and manufacture hydraulic test rigs, pressure rigs and hydraulic test equipment (including flushing rigs) for a whole range of different industries and applications.





**Working across all industry sectors, we have the experience you can depend on.**

## AEROSPACE

As ground support specialists, we are proud of our strong links within the Aerospace sector.

In addition to custom test rigs, flushing rigs and hydraulic power unit design and build projects, we can offer total system integration, electronic control systems, on-site installation and commissioning as well as service and training packages.



## INDUSTRIAL / MANUFACTURING

Our innovative solutions are designed to offer optimum performance, whilst our site engineers provide the support needed to ensure efficiency, reliability and safety for your hydraulic systems.

Our online catalogue features next day delivery on parts ordered before 10pm - perfect for when you need to limit downtime and a replacement part fast.



## DEFENCE

We are proud to have supported the Defence sector on numerous projects, including in marine, land and aerospace operations

Work is carried out safely and efficiently to ensure downtime is minimised and systems are efficient and sufficiently robust to withstand the most arduous of conditions.





## UTILITIES

We have maintenance, repair and overhaul contracts with many leading names within the automotive sector and supply components and parts from leading brands.

Our innovative solutions are designed to offer optimum performance, whilst our site engineers provide the support needed to ensure efficiency, reliability and safety for your hydraulic systems.



## MARINE

We have a long history and strong links within the marine sector, with our South West service centres being ideally located for the marine industry's needs.

We provide specialist marine engineering solutions, repairs and servicing for defence, yachts, commercial and private boat applications.



## NUCLEAR

We supply systems and components for the nuclear sector.

Our experienced engineers ensure design, build, maintenance and repair work is carried out safely and efficiently to ensure downtime is minimised and systems are safe, efficient and robust.



## HYDRAULIC RING MAIN

### *Aerospace*

- Dedicated, permanent hydraulic supply to Structural Test Laboratory for global helicopter manufacturer.
- Installation of four air blast coolers.
- Design and installation of a custom sub ring main.
- Major upgrade to existing distribution ring main.
- Bespoke pipework brackets, stands and manifolds (FEA tested).
- More than 21.5 metres of pressure and return pipework was manufactured on site using Parker's unique High Pressure Flange system making for a very quick and efficient installation.
- 80 x 10mm 6k steel pipework is capable of operating at 420 bar maximum working pressure and is connected using our in-house designed "X-Blocks" which distributes the flow to numerous outputs.



## HYDRAULIC CYLINDER SERVICING

*Agriculture*

- Service contract for well-known cheese producer.
- Cylinders are thoroughly inspected and any faults or weak points identified.
- Worn or damaged parts are replaced.
- Cylinders service includes leak testing, pressure testing and performance testing to ensure optimal performance and reliability.

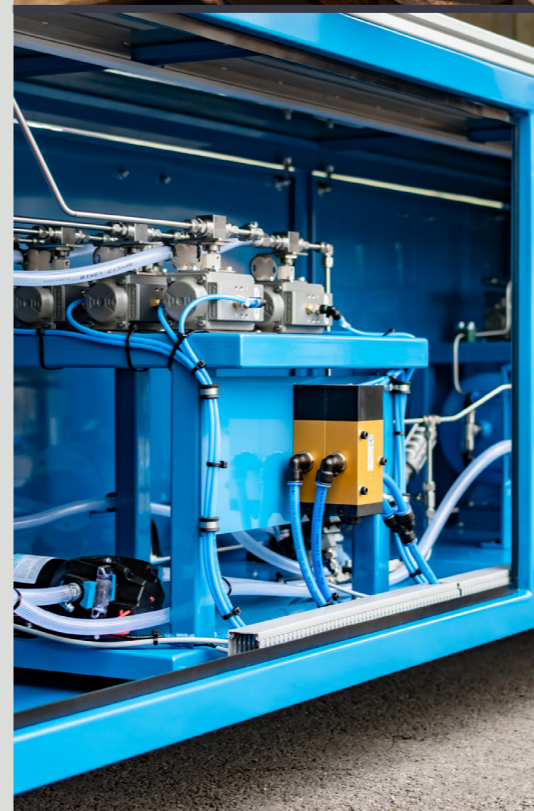
## HOSE TEST RIG

*Automotive*

- Design, build and commission of two hose test rigs for world-leading racing team fluid transfer assemblies, hose and fittings supplier.
- UKCA/CE certificated and labelled, the test rigs provide regular and rigorous testing for flexible hose assemblies.

Measuring over 3 metres in length, the main test rig capabilities include:

- Testing up to four hoses simultaneously, at up to 250bar.
- Air supply controls hydraulic (water) valves and pressurises water using a 60:1 air/water intensifier.
- Low-pressure pump provides means of flushing and pre-filling the hoses under test.
- Clean, filtered and dried compressed air supply of guaranteed continuous pressure of 6 bar minimum.
- Power supply of 240VAC 1 PH 50Hz 16A.
- Nominal test sequence, based on existing rigs, (i.e., pre-fill/flush, test, vent, purge).





## FLUSHING RIG

### Defence

- Bespoke containerised flushing rig system for type 23 frigates.
- Designed and built in-house.
- 6000mm long x 2500mm high x 2500mm wide custom container.
- Two power units with four 7.5 Kw motor and pump sets installed onto a 3000 Litre stainless steel reservoir.
- Motor and pump sets each produce variable flow rates from 70 L/Minute up to 170 L/Min via electronic variable speed motor inverter drive control.
- Bi-directional flushing control via directional control valves.
- Pressure and return line filtration – ranging from 2 to 10 microns (dependent on filter elements).
- Individual contamination monitoring for each circuit.
- Custom made and designed electrical control operating system driven via touch screen tablet control and featuring remote operating control.



## MACHINE REFURBISHMENT

### Industrial

- Complete overhaul of a tube manipulation machine for leading manufacturer of high quality, precision tubes.
- Improved efficiency and customer is now able to uphold quality and robust workmanship.
- Machine works with the toughest specifications in high performance alloys (including stainless steel, titanium and nickel alloys).



## OEM HOSE & KITTING SERVICE

### Manufacturing

- Manufacturing hydraulic hose assemblies to order for an OEM operating within the Marine sector.
- Complimented with bespoke OEM kitting service to increase our client's efficiency and productivity.
- Kanban supply.
- Hose management support, including asset management registration, periodic inspections and a replacement service.
- Dedicated account relationship manager to ensure outstanding customer service is consistently provided.



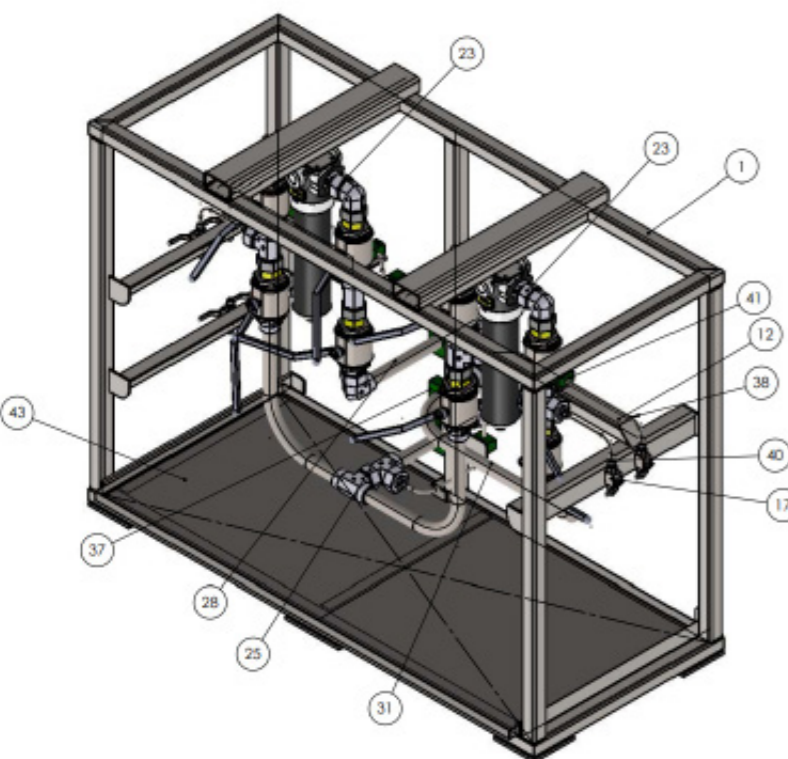
## VESSEL OVERHAUL

### Marine

Specialists in alternators and generators, our Electrical Mechanical Services team completed a significant overhaul project on a car, passenger and freight ferry for an international marine business.

The work included:

- On-site aft bow thrust overhaul including internal inspection, replacement bearings, rebuild, testing and full works report.
- Port alternator clean and bearing change.
- Main vehicle deck aft cargo fan overhaul, including collection from dockside to Rotec workshop, inspection, steam clean, re-varnish, new bearings, dynamic balancing, testing and re-installation.
- Cargo fan motors overhauled.



## TWIN FILTER UNIT

### Nuclear

- Design and manufacture of twin filtration assembly.
- Includes twin in-line filters, 3 micron elements and visual indicators.
- Full bore in-line isolation shut off ball valves on inlet and outlet of filters.
- Drain down / vent ball valves to remove system pressure.
- Shut off ball valves with manual locking.
- All pipework modified, de-bored and pelleted clean as required.
- System pressure tested to 200 bar using hydraulic oil.



## WINCH SYSTEMS

### Utilities

Our client required a front of vehicle mounted winch system, featuring two selectable standard modes of operation - lifting and self-recovery. The winch is capable of a 1,550 kg working load limit (at 5metres/min) when lifting and 3,600 kg working load limit (2.5metres/min) when in self-recovery mode.

- 9mm x 47metres compact wire rope
- Heavy duty eye hook.
- Operator proportional speed control
- Line pull force control integrated.
- Integral fail safe static hydraulic brake, with automatic apply and release.
- Integral dynamic hydraulic brake.
- Engine electronic hand throttle control system, configured to the engine.

Our client also requested a second winch system - a hydraulic capstan winch system fitted to the back of their fleet vehicles, with a purpose built sliding trolley mount to lower risk of back / manual handling injuries.

Features include:

- Lifting and lowering of goods
- Fast rope line speeds of 22-24 metres/minute
- 350 kg dynamic working load limit
- Integral roller fairlead to allow for horizontal and vertical rope deployment
- Integral fail-safe static brake, with automatic apply and release and integral dynamic brake
- Durable stainless steel capstan winch drum
- Remote electrical foot pedal operation for start and stop
- Remote vehicle mounted electrical control box for easy control of hydraulic system, including emergency stop.



**We are committed to providing all of our customers with the very best products and service - that's why we are committed to upholding the highest quality standards at every stage.**

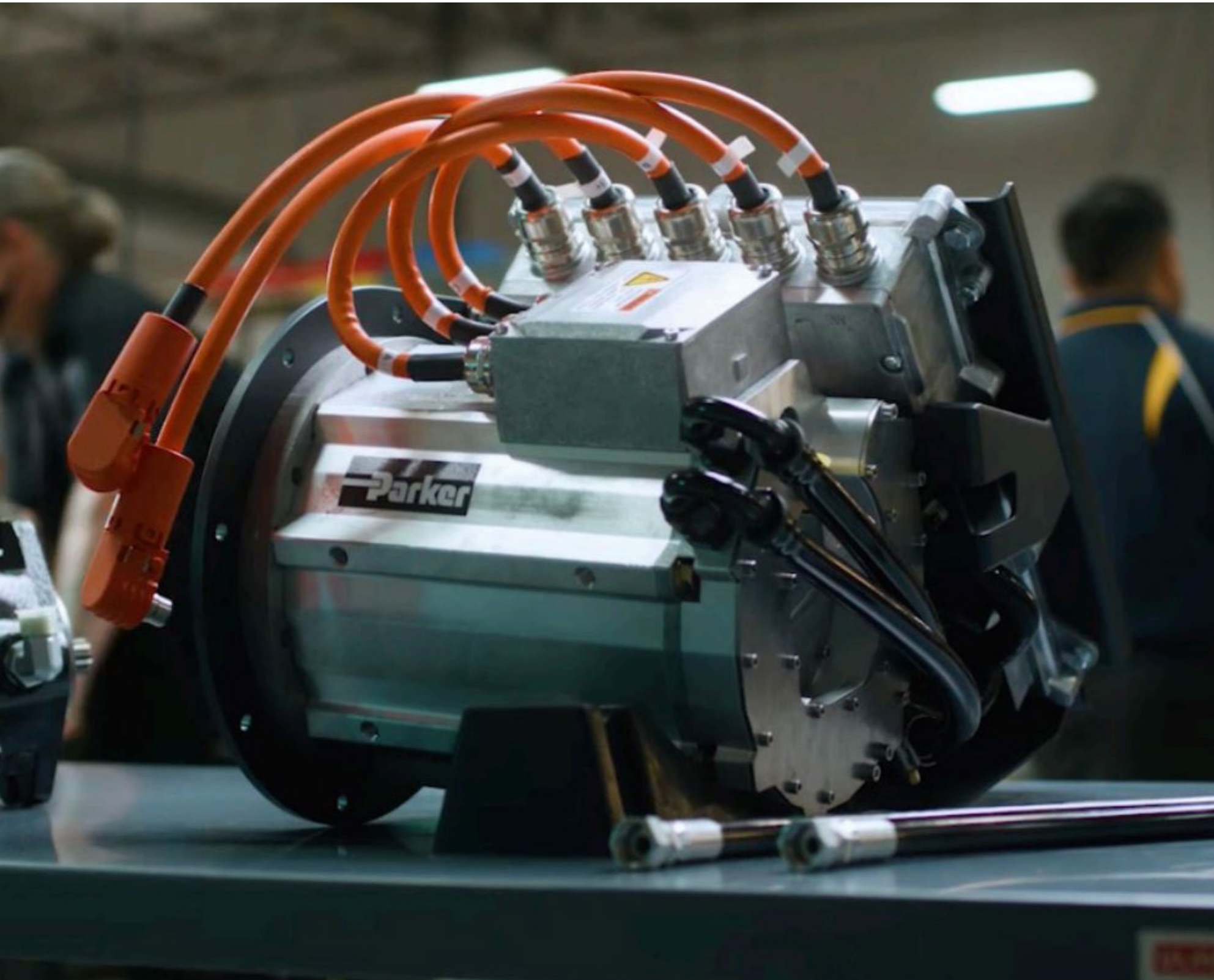
Across all our service centres, we implement certified management systems, according to ISO 9001 and ISO 14001.

Business wide, we place great importance on keeping up-to-date with all health and safety laws and protocols.

Our numerous accreditations, including Achilles Silver Plus, JOSCAR and SafeContractor Approved, recognises our high standard of processes and quality management systems in place, business wide.

We combine multi-skilled technical expertise, fully equipped engineering facilities and a commitment to researching cutting-edge technology, providing our clients with tailored, optimised solutions.





**Committed to achieving net zero by 2040, we continuously identify and work towards initiatives to monitor and drive our sustainability efforts.**

Every year, our business undergoes an independent sustainability survey. We were delighted to have achieved a 21% reduction in CO2e emissions in 2022/3 and are committed to continue on our journey to minimise our environmental impact.

Engrained into our company strategy and daily business, we have the necessary management frameworks in place and have introduced a robust sustainability reporting system. This, along with our high procurement standards to ensure responsible sourcing, has allowed us to achieve ISO 14001.



### **CERTIFIED PARKER MOBILE ELECTRIFICATION CENTRE**

As businesses strengthen their commitment to reducing their environmental impact, many are investing in the electrification of assets by combining hydraulic, electrical and control technologies. We are able to assist clients with the process, by combining the latest industry leading products with excellent service.

Environmental impact and energy consumption are reduced, and assets have systems with maximum performance, efficiency and safety that are designed to work in harshest environments.



Our team harness the latest in engineering technology to deliver the most efficient, reliable and environmentally friendly alternatives compared to traditional engineering solutions.

### INTERNET OF THINGS (IoT) TECHNOLOGY

We are the first known company in the UK to design, install and commission Parker IoT software that remotely monitors a hydraulic system.

This technology allows the user to ensure their assets are working at full functionality by monitoring key performance indicators, such as temperature, pressure and flow.

The remote monitoring technology further benefits the user by providing vital performance feedback for preventative maintenance planning, and can monitor real time and historical data all within a simple web-based interface.

### RESEARCH AND DEVELOPMENT

Rotec's technical team are well-practised in research and development projects.

Committed to providing our clients with innovative solutions, previous R&D projects have included designing a new hydraulic valve, utilisation of a 3D laser scanner to increase the accuracy and efficiency when installing pipework systems, and the development of a new electrical winch system that has proportional control and can achieve load lifts which match that of our hydraulic winch systems.



## SUPPORTING THE COMMUNITY

Rotec has a strong history of investing in and supporting our local community.

We are proud to be long-standing sponsors of St Margaret's Hospice Care and Wallace & Gromit's Grand Appeal – the official Bristol Children's Hospital charitable foundation. Alongside these charities, we have also regularly supported other charitable organisations and local projects.

## LEARNING AND DEVELOPMENT

Trained at the National Fluid Power Centre in Nottinghamshire, our engineers are recognised as among the most accomplished in the industry.

We operate a programme of continuous development to ensure all of our employees remain at the fore-front of current thinking.

## EQUALITY AND DIVERSITY

Rotec is an equal opportunities employer. We are committed to creating and supporting equal opportunities within the work place in accordance with Equality Act 2010.

## AWARD WINNING

We were delighted for our team, whose hard work was recognised and celebrated, when we were announced as winners of the 2023 Somerset Manufacturer of the Year.

2023 also saw us as finalists at the National MX Manufacturer UK Awards for 'Achieving Customer Value'.





**Taunton** *(Head office)*

Unit 1, Venture Way,  
Priorswood Ind. Estate,  
Taunton, Somerset  
TA2 8DE

T: 01823 348 900  
E: sales@rotec.net

**Plymouth**

Units 8, 9 & 14, Yacht Haven Quay,  
Breakwater Road,  
Plymstock, Devon  
PL9 7FE

T: 01752 262 966  
E: plymouth@rotec.net

**Stroud**

Unit 1, Stroud Enterprise Centre,  
Bath Road, Lightpill,  
Stroud, Gloucester  
GL5 3NL

T: 01453 767 729  
E: stroud@rotec.net

**Falmouth**

Queens Wharf,  
The Docks,  
Falmouth, Cornwall  
TR11 4NR

T: 01326 653 287  
E: falmouth@rotec.net

**Ram Reman** *(Part of the Rotec Group)*

Gundrymoor Trading Centre,  
Collingwood Road,  
West Moors, Dorset  
BH21 6QQ

T: 01202 861 888  
E: sales@ramreman.co.uk

